

# H & M SERIES CONDUIT INSTALLATION AND WIRING CONNECTIONS

These instructions describe the proper installation of the loose wiring conduits for the upper modules of 1991 and later H and M Series dryers (significant improvements to these models include a new ASC control panel and a new numbering system for control circuit wires). The wiring conduits must be installed after the dryer modules are in place and the buttresses have been connected.

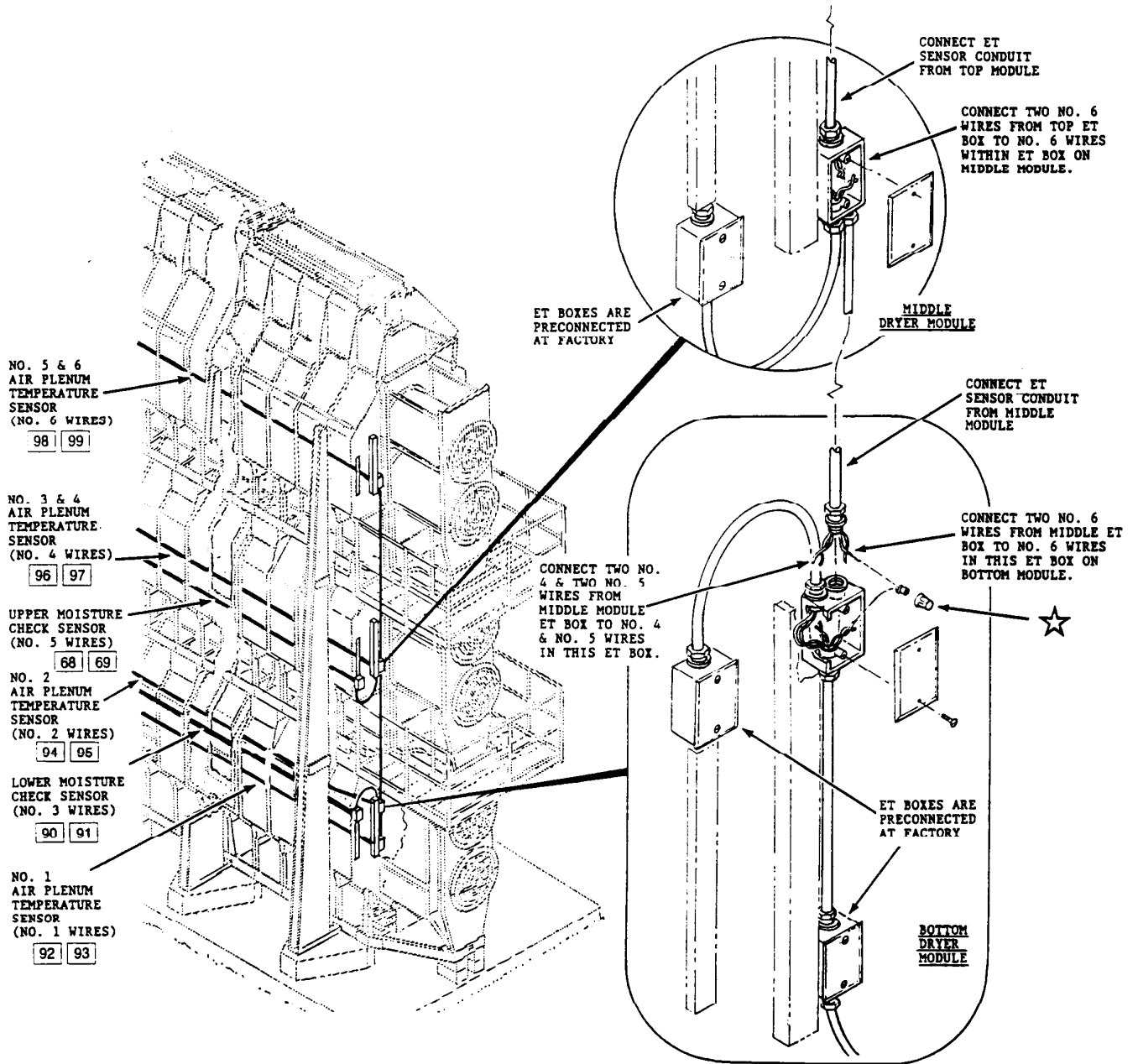
NOTE: Refer to the drawing showing the appropriate model dryer. The upper module of the two-module models has four loose conduits, whereas the two upper modules of the three-module models have seven conduits which must be field connected.

THE ELECTRONIC TEMPERATURE (ET) SENSOR CONDUITS ARE SHOWN ON A SEPARATE PAGE OF THIS BULLETIN.

## INSTALLATION

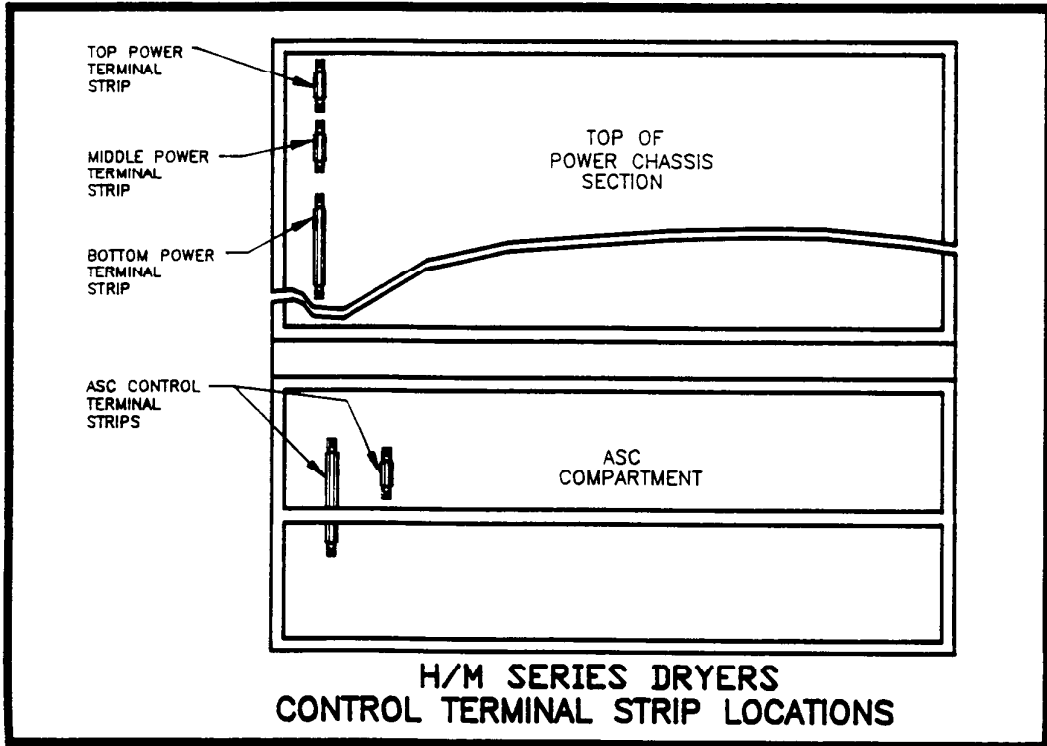
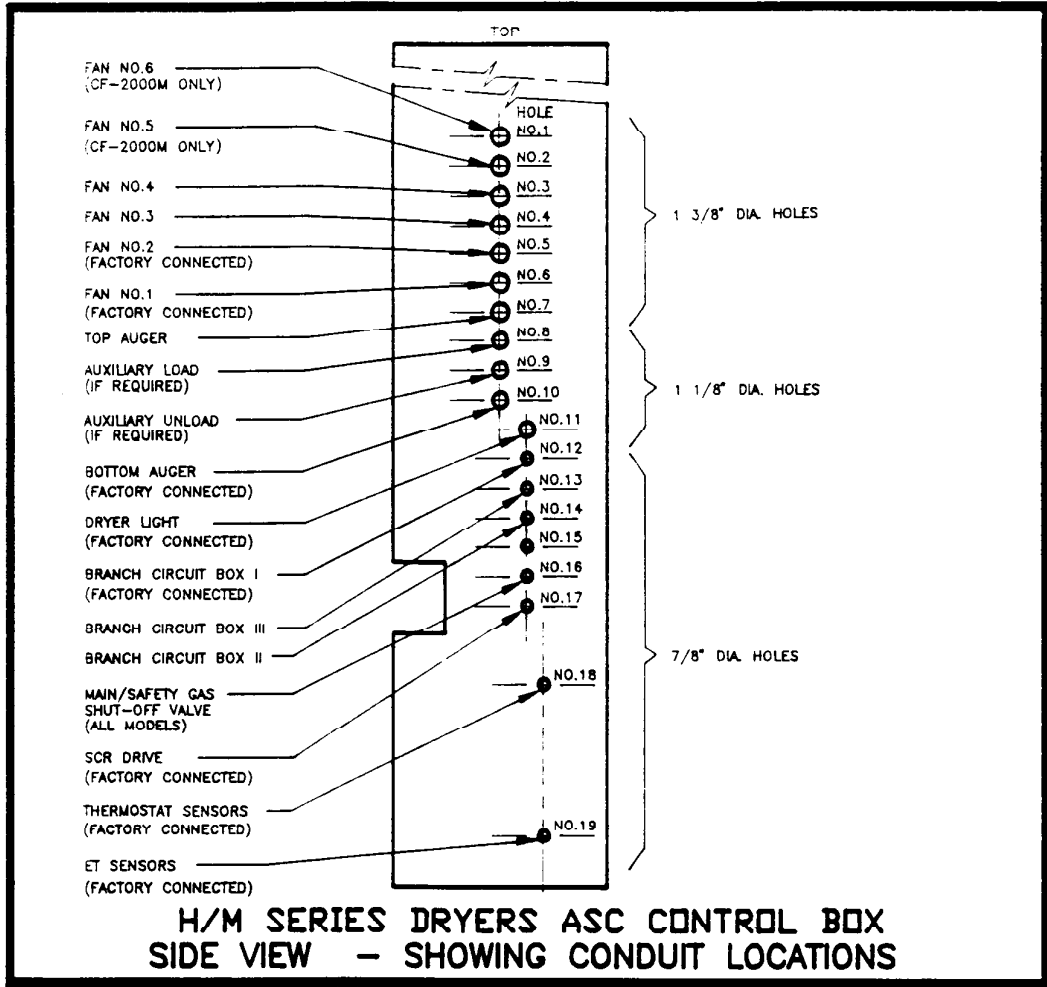
1. Untie and properly identify the conduits, then run them down the vertical raceways located near the dryer ASC control box.
2. Install and connect the fan motor conduit fittings and electrical wires as shown in VIEW A.
3. Install and connect the top auger conduit fitting and electrical wires as shown in VIEW B.
4. Connect the branch circuit fitting(s) and wires as shown in VIEW C.
5. If desired, 3-phase auxiliary load and unload motors of 15 HP or less may be powered directly through the dryer ASC control box, by connecting the motor conduits and wires as shown. Standard model dryers are factory equipped with overload relay heater elements sized for 10 HP motors. If auxiliary motors are of a different size, the elements must be changed.
6. Connect the ET sensor conduits and wires as shown in the ET Sensor Diagram.
7. Recheck all conduits within their wiring connections. **MAKE SURE ALL WIRES ARE PROPERLY CONNECTED, AS INDICATED, AND FULLY TIGHTENED.**
8. Secure the conduits within the raceways by installing the raceway tie strips. Use sheet metal screws to install the tie strips, and locate the strips over the opening approximately 2 to 3 feet apart.
9. After the power supply wires are connected into the load center within the dryer ASC control box, **MAKE SURE TO CHECK ALL MOTORS TO VERIFY THAT THEY ARE ROTATING IN THE PROPER DIRECTION.** If ALL MOTORS ARE REVERSED, the condition can be easily corrected by SHUTTING OFF THE POWER and interchanging any two of the three main power supply wires at the load center.

# ET SENSOR DIAGRAM



☆ Solder and use brass connectors with caps to connect the small ET sensor wires. A good connection is critically important. Wire polarity is not important.

□ ASC Control Panel terminal number.

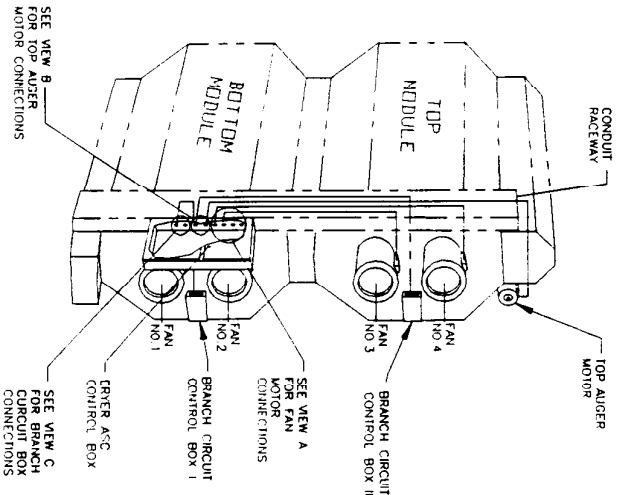
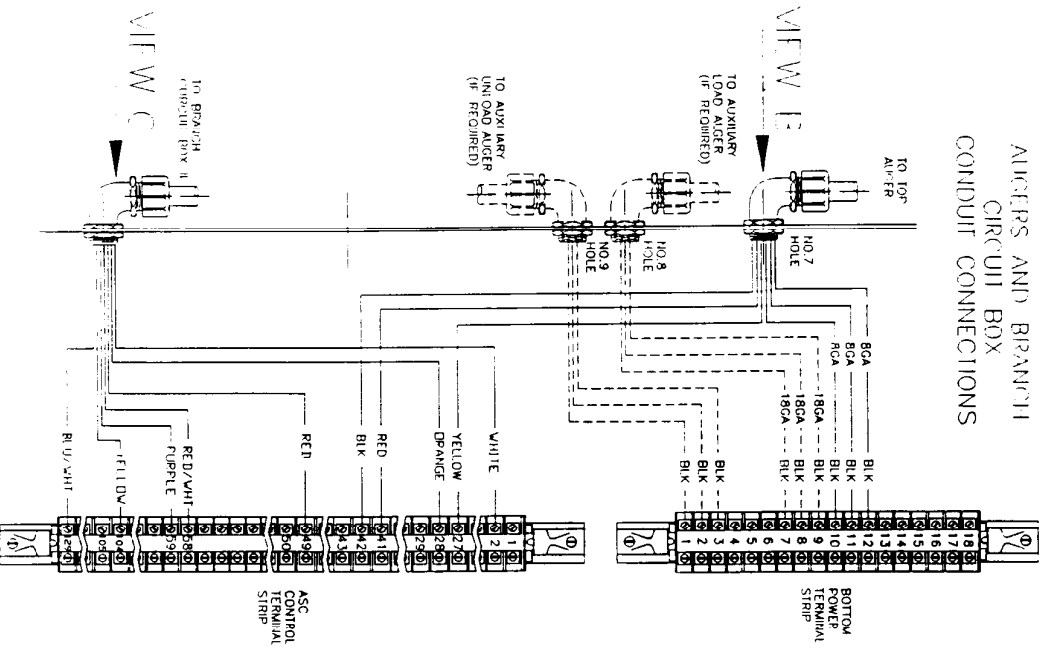


# 1000H / 1300M

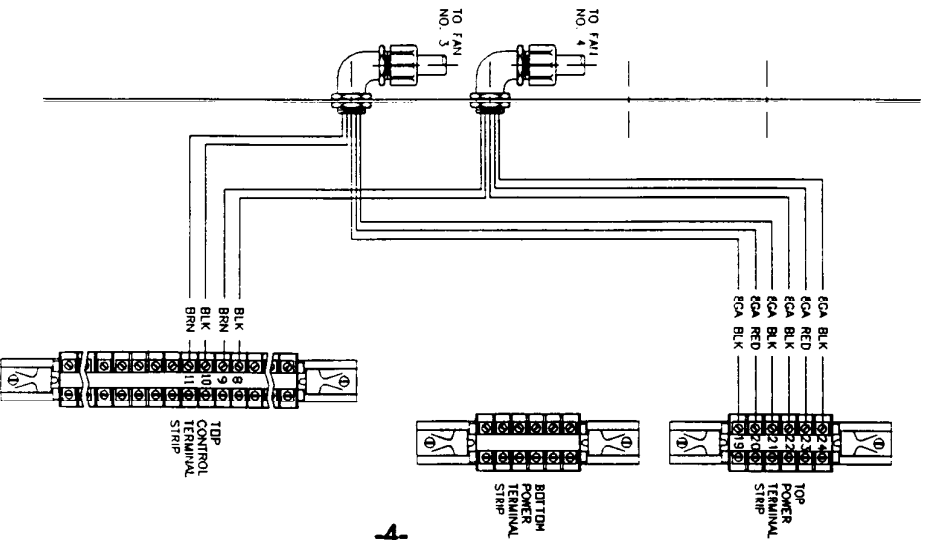
## DRYER CONDUIT ROUTING & WIRING CONNECTIONS

VIEW A

### AUGERS AND BRANCH CIRCUIT BOX CONDUIT CONNECTIONS



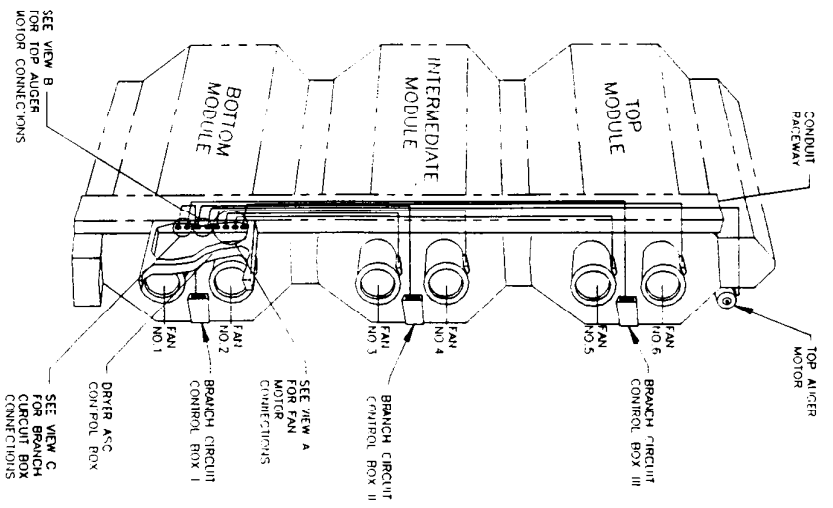
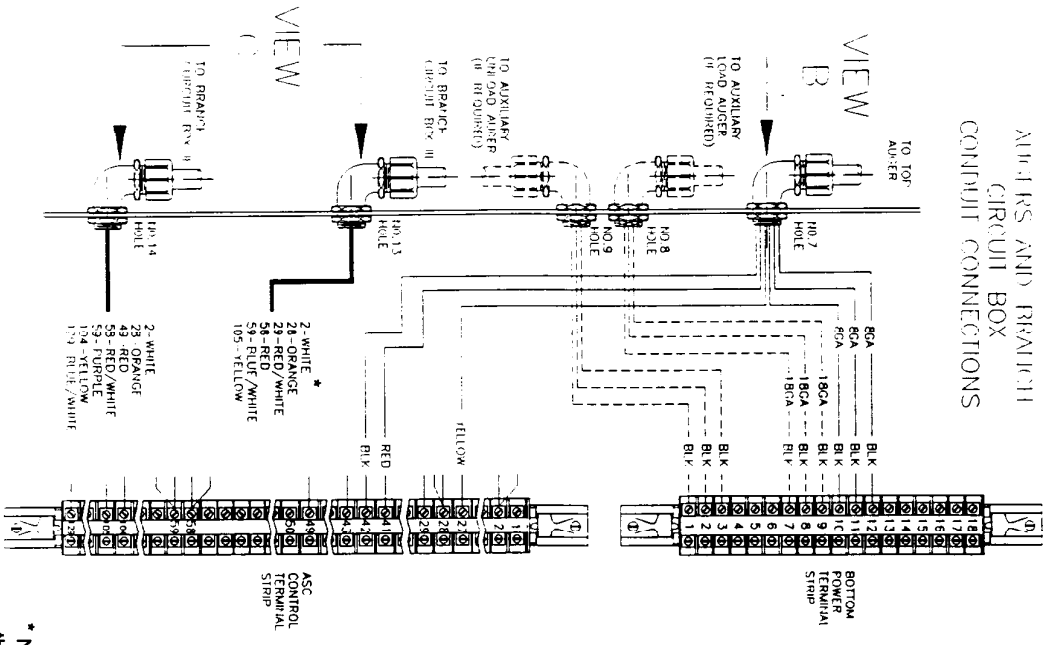
### FAN MOTOR CONNECTIONS-3 PHASE (WITHIN DRYER ASC CONTROL BOX)



# 1500H / 2000M

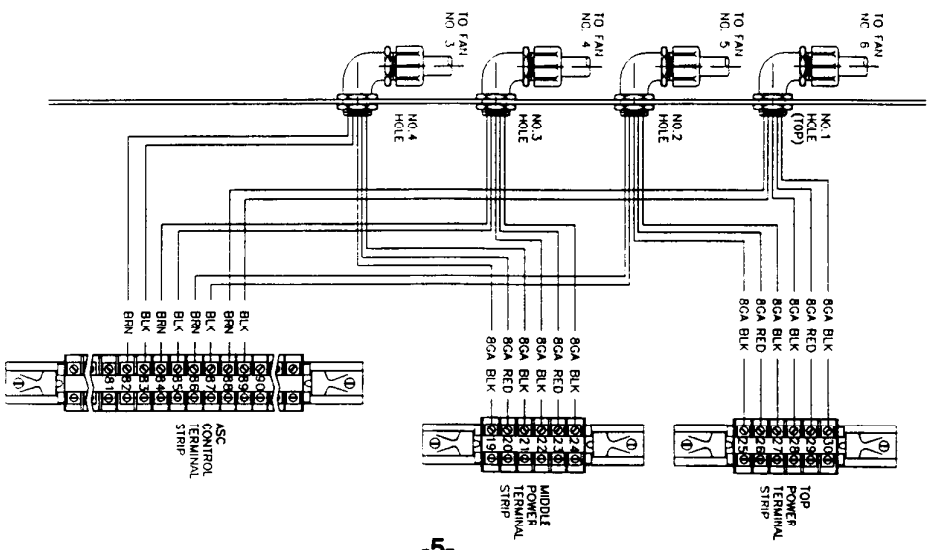
## DRYER CONDUIT ROUTING & WIRING CONNECTIONS

ALTERS AND BRANCH CIRCUIT BOX CONDUIT CONNECTIONS



FAN MOTOR CONNECTIONS-3 PHASE (WITHIN DRYER ASC CONTROL BOX)

VIEW A



\* Number shown refers both to the number on the wire and the number on the control terminal strip.



# **FARM FANS**

Division of ffl CORPORATION  
5900 ELMWOOD AVE. • INDIANAPOLIS, IN 46203  
© 1991 ffl CORP. Printed in U.S.A.