

H & M SERIES PARTS MANUAL SUPPLEMENT

This supplement covers the ASC electrical control system of 1991 to 1996 CMS- and CF-H and M series grain dryers. For 1997 and later models, refer to Bulletin MH-01-3S.

CONTENTS

Fig. 1 CMS H & M series ASC control panel	2
Fig. 2 CF H & M series ASC control panel	4

ASC ASSEMBLY - CMS H & M SERIES DRYERS

Item	Part No.	Description				
	415-2949-6	CMS-650M ASC Assembly		X		
	415-2950-4	CMS-500H ASC Assembly			X	
	415-2951-2	CMS-1000H ASC Assembly				X
	415-2952-0	CMS-1500H ASC Assembly				X
1	401-4103-8	MOUNTING PANEL ASC	1	1	1	1
2	056-1436-7	BURNER TIMER 60 MIN.	1	1	1	1
3	415-2302-8	SCR MOTOR CONTROL	1	1	1	1
4	415-1797-0	SAFETY CIRCUIT ASSY	1	1	1	1
5	406-1550-2	8" PANDUIT WIREWAY	2	2	2	2
6	406-1552-8	8" PANDUIT COVER	2	2	2	2
7	006-1119-4	16" PANDUIT WIREWAY	1	1	1	1
8	006-1120-2	16" PANDUIT COVER	1	1	1	1
9	056-1390-6	TIMER 6-SEC/12MIN.	1	1	1	1
10	056-1800-4	METER ROLL MONITOR	1	1	1	1
11	055-1019-3	8 PIN RELAY BASE	8	8	8	8
12	044-1018-9	115V 8 PIN RELAY 5A	5	5	5	5
13	401-4095-6	LOWER ASC DEADFRONT	1	1	1	1
14	401-1133-8	MOUNTING CHANNEL	1	1	1	1
15	021-1075-7	10" PANDUIT WIREWAY	2	2	2	2
16	056-1834-3	FUSE BLOCK END BARRIER	1	1	1	1
17	021-1079-9	10" PANDUIT COVER	2	2	2	2
18	056-1832-7	TERM. MOUNTING CHANNEL	2	2	2	2
19	056-1833-5	TERM. BLOCK END BARRIER	3	3	3	3
20	056-1831-9	TERMINAL BLOCKS	54	54	54	54
21	056-1867-3	10A FUSE 600V	2	2	2	2
22	056-1836-8	FUSE BLOCK	3	3	3	3
23	056-1838-4	FUSE PULLER	3	3	3	3
24	021-1047-6	PANDUIT CLIPS	13	13	13	13
25	021-1055-9	10" MOUNTING TRACK	1	1	1	1
26	050-1008-7	5A FUSE 600V	1	1	1	1
27	401-4094-9	UPPER ASC DEADFRONT	1	1	1	1
28	406-1549-4	22" PANDUIT WIREWAY	1	1	1	1
29	406-1551-0	22" PANDUIT COVER	1	1	1	1
30	056-1204-9	HTR. ELEMENT C3.01A	1	1	1	1
31	056-1086-0	O/L RELAY BRACKET	1	1	1	1
32	056-1062-1	O/L RELAY 27A 1-POLE	1	1	1	1
33	021-1054-2	4" MOUNTING TRACK	1	1	1	1
34	044-1026-2	5 DIGIT HOUR METER	1	1	1	1
35	415-2953-8	RED MUSHROOM PB ASSY	1	1	1	1
36	415-2800-1	ILLUM. GREEN PB ASSY	1	1	1	1
37	415-2960-3	3 POS. SEL. SW. ASSY	6	6	6	6
38	415-2961-1	2 POS. SEL. SW. ASSY	1	1	1	1
39	415-2954-6	3 POS. SEL. SW. ASSY	-	-	1	2
40	415-2801-9	EXTENDED RED PB ASSY	-	-	1	2
41	056-1034-0	RED MON.PB ASSY	1	1	1	1
42	056-1367-4	TIMER 999 SEC/MIN/HR	1	1	1	1
43	056-1368-2	3 DIGIT COUNTER	1	1	1	1
44	035-1004-7	INDICATOR LIGHT AMBER	4	4	4	4
45	023-1023-3	SPRING LATCH	4	4	4	4
46	415-2484-4	ZYTRON TEMP CONTROL	3	3	4	5
47	026-1041-8	2 POS. TOGGLE SWITCH	1	1	1	1
48	026-1015-2	3 POS. TOGGLE SWITCH	1	1	1	1
49	056-1644-6	5K SPEED KNOB	1	1	1	1
50	056-1471-4	0-100 VDC METER	1	1	1	1
51	044-1114-6	TEMPERATURE METER	1	1	1	1
52	056-1869-9	54.9K 1/4W 1% RESISTOR	1	1	1	1
53	415-2962-9	2 POS SEL SW ASSY	1	1	2	3
54	415-2803-5	INDICATOR LIGHT AMBER	1	1	1	1
55	325-1774-0	CLOSURE HINGE	2	2	2	2
A	090-1193-3	PHST #8 X 3/8 TYPE B	54	54	54	54
B	090-1287-3	CARRIAGE BOLT 1/4-20 X 1/2	4	4	4	4
C	090-1198-2	HHST 1/4 X 1/2 TYPE B	2	2	2	2
D	090-1252-7	10-32 X 1/2	6	6	8	10
E	090-1190-9	PHST #6 X 3/8 TYPE B	3	3	3	3
F	095-1005-8	POP RIVET 1/8 X 1/4"	80	80	80	80
G	092-1001-4	FLAT WASHER #6	80	80	80	80
56	055-1024-3	37 PIN FEMALE PLUG	1	1	1	1
57	054-1041-0	CLAMP	1	1	1	1
58	420-1063-7	DEADFRONT SUPPORT	4	4	4	4
59	006-1188-9	GROUNDING LUG	1	1	1	1
60	056-1795-6	TIMER 100 SEC	1	1	1	1

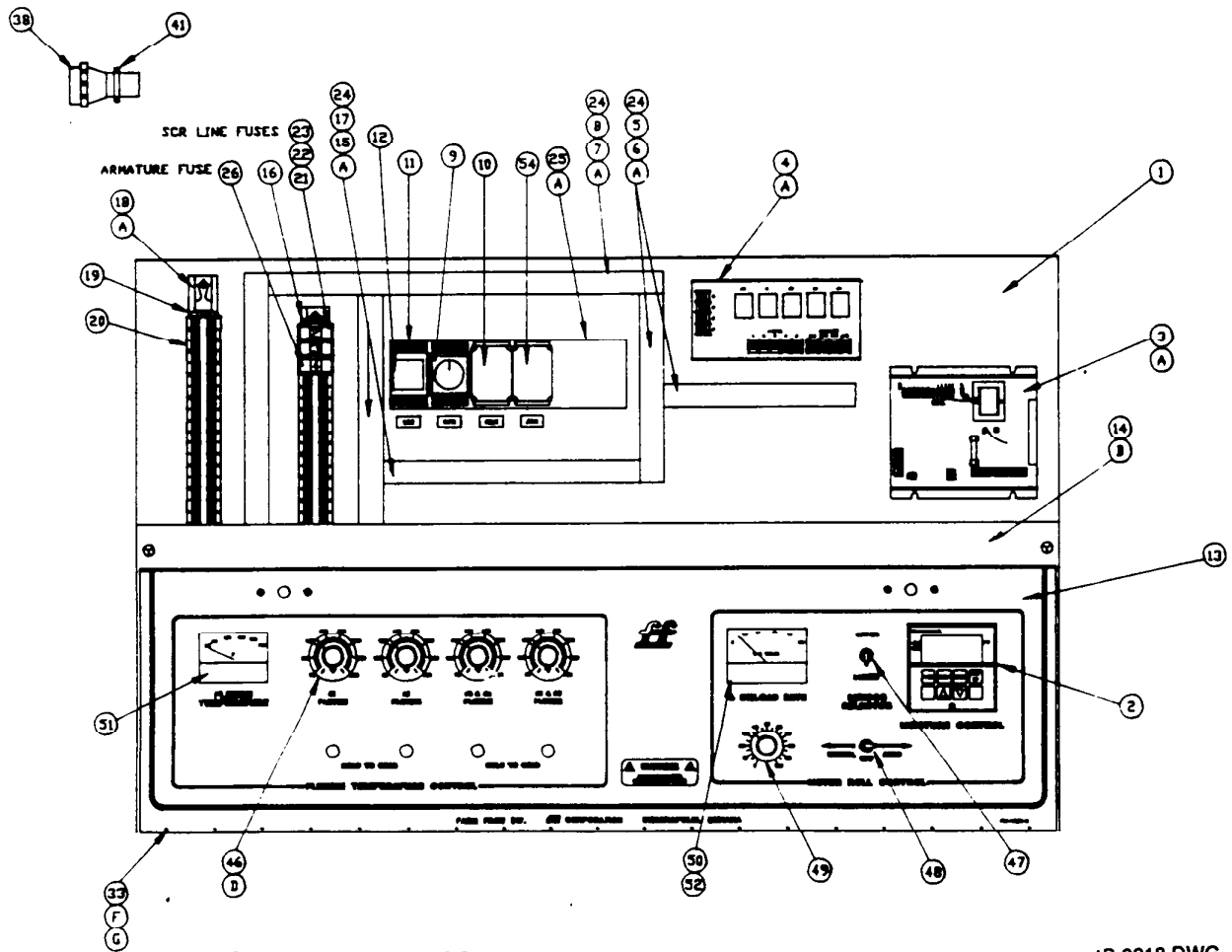
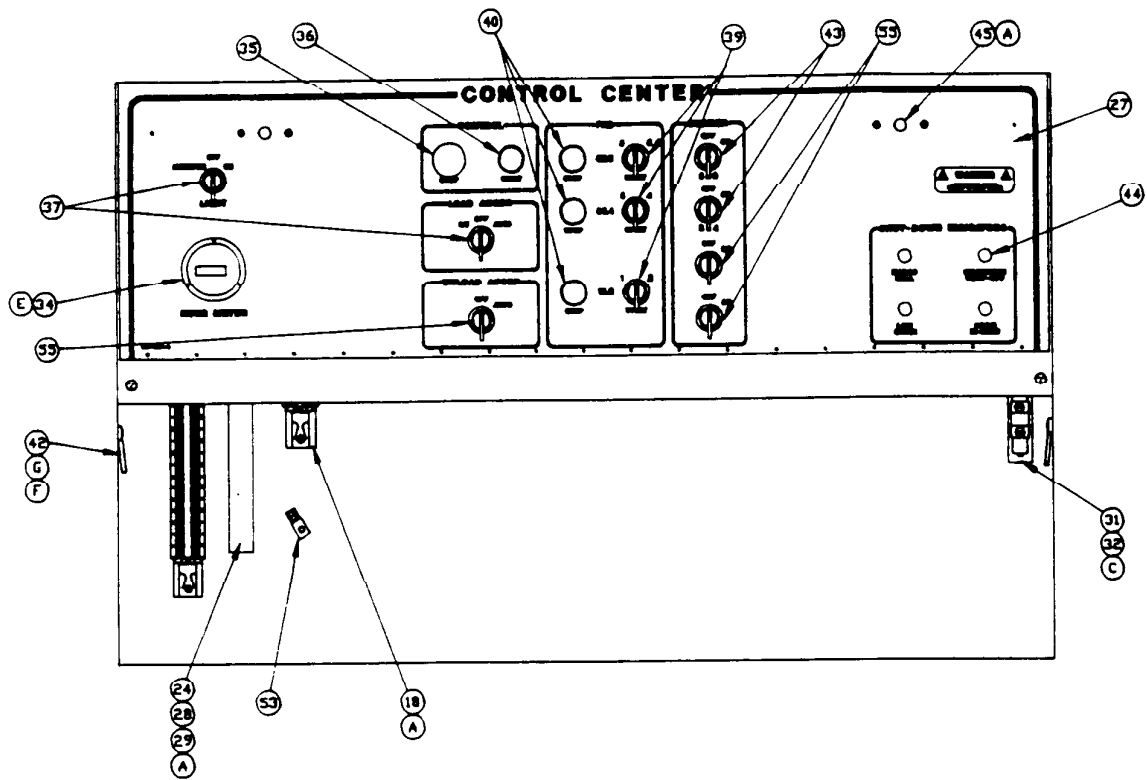


Fig. 2 CF H & M series ASC control panel

4B-0218.DWG

ASC ASSEMBLY - CF H & M SERIES DRYERS

Item	Part No.	Description			
	415-2956-1	CF-500H & CF-650M ASC Assembly		X	
	415-2957-9	CF-1000H & CF-1300M ASC Assembly			X
	415-2958-7	CF-1500H & CF-2000M ASC Assembly			X
1	401-4103-8	MOUNTING PANEL ASC	1	1	1
2	415-2812-6	MOISTURE CONTROL	1	1	1
3	415-2302-8	SCR MOTOR CONTROL	1	1	1
4	415-1797-0	SAFETY CIRCUIT ASSY	1	1	1
5	406-1550-2	8" PANDUIT WIREWAY	2	2	2
6	406-1552-8	8" PANDUIT COVER	2	2	2
7	006-1119-4	16" PANDUIT WIREWAY	1	1	1
8	006-1120-2	16" PANDUIT COVER	1	1	1
9	056-1390-6	TIMER 6-SEC/12MIN.	1	1	1
10	056-1800-4	METER ROLL MONITOR	1	1	1
11	055-1019-3	8 PIN RELAY BASE	4	4	4
12	044-1018-9	115V 8 PIN RELAY 5A	1	1	1
13	401-4096-4	LOWER ASC DEADFRONT	1	1	1
14	401-1133-8	MOUNTING CHANNEL	1	1	1
15	021-1075-7	10" PANDUIT WIREWAY	2	2	2
16	056-1834-3	FUSE BLOCK END BARRIER	1	1	1
17	021-1079-9	10" PANDUIT COVER	2	2	2
18	056-1832-7	TERM. MOUNTING CHANNEL	2	2	2
19	056-1833-5	TERM. BLOCK END BARRIER	3	3	3
20	056-1831-9	TERMINAL BLOCKS	44	49	54
21	056-1867-3	10A FUSE 600V	2	2	2
22	056-1836-8	FUSE BLOCK	3	3	3
23	056-1838-4	FUSE PULLER	3	3	3
24	021-1047-6	PANDUIT CLIPS	13	13	13
25	021-1055-9	10" MOUNTING TRACK	1	1	1
26	050-1008-7	5A FUSE 600V	1	1	1
27	401-4097-2	UPPER ASC DEADFRONT	1	1	1
28	406-1549-4	22" PANDUIT WIREWAY	1	1	1
29	406-1551-0	22" PANDUIT COVER	1	1	1
30	056-1204-9	HTR. ELEMENT C3.01A	1	1	1
31	056-1086-0	O/L RELAY BRACKET	1	1	1
32	056-1062-1	O/L RELAY 27A 1-POLE	1	1	1
33	325-1774-0	CLOSURE HINGE	2	2	2
34	044-1026-2	5 DIGIT HOUR METER	1	1	1
35	415-2953-8	RED MUSHROOM PB ASSY	1	1	1
36	415-2800-1	ILLUM. GREEN PB ASSY	1	1	1
37	415-2960-3	3 POS. SEL. SW. ASSY	2	2	2
38	055-1024-3	37 PIN FEMALE PLUG	1	1	1
39	415-2954-6	3 POS. SEL. SW. ASSY	3	3	3
40	415-2801-9	EXTENDED RED PB ASSY	3	3	3
41	054-1041-0	CLAMP	1	1	1
42	420-1063-7	DEADFRONT SUPPORT	4	4	4
43	415-2962-9	2 POS. SEL. SW. ASSY	4	4	4
44	035-1004-7	INDICATOR LIGHT AMBER	4	4	4
45	023-1023-3	SPRING LATCH	4	4	4
46	415-2484-4	ZYTRON TEMP CONTROL	2	3	4
47	026-1041-8	2 POS. TOGGLE SWITCH	1	1	1
48	056-1798-0	3 POS. TOGGLE SWITCH 9 SPADE	1	1	1
49	056-1644-6	5K SPEED KNOB	1	1	1
50	056-1471-4	0-100 VDC METER	1	1	1
51	044-1114-6	TEMPERATURE METER	1	1	1
52	056-1869-9	54.9K 1/4W 1% RESISTOR	1	1	1
53	006-1188-9	GROUNDING LUG	1	1	1
54	056-1844-2	AUTO RANGE MODULE	1	1	1
55	415-2804-3	2 POS. SELECTOR SWITCH ASSY	3	3	3
HARDWARE					
A	090-1193-3	PHST #8 X 3/8 TYPEB	54	54	54
B	090-1287-3	CARRIAGE BOLT 1/4-20 X 1/2	4	4	4
C	090-1198-2	HHST 1/4 X 1/2 TYPEB	2	2	2
D	090-1252-7	10-32 X 1/2	10	10	10
E	090-1190-9	PHST #6 X 3/8 TYPEB	3	3	3
F	095-1005-8	POP RIVIT 1/8 X 1/4"	80	80	80
G	092-1001-4	FLAT WASHER #6	80	80	80



FARM FANS

Division of ffi Corporation

5900 Elmwood Ave. • Indianapolis, IN 46203

© 1998 ffi Corporation

Printed in U.S.A.