

M-SERIES SAFETY CAGE INSTALLATION

NOTE: FOR EASE OF ASSEMBLY, INSTALL SAFETY CAGES ON UPPER MODULES BEFORE LIFTING MODULES INTO PLACE

FRONT SAFETY CAGES

1. Use 3/4" x 5/16" Dia. sheet metal screws and mount the two half sections of each upper and lower safety cage hoop onto the outside of the ladder, as shown in Fig. 1.

NOTE: The lower entry loop sections are 31" in diameter, whereas the upper ones are 27" diameter.

2. Secure the hoop sections together by mounting a vertical safety bar on the outside and installing 1" x 5/16" Dia. carriage bolts with the head end located inside the hoop.

3. Install the remaining 6 vertical bars on the outside using 3/4" x 5/16" Dia. carriage bolts. After all parts are installed as shown in Fig. 1, fully tighten all bolts and screws.

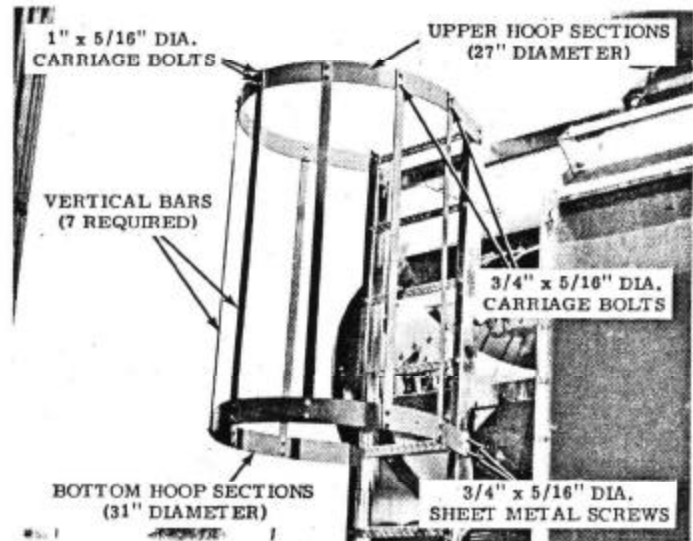


FIG. 1 - FRONT SAFETY CAGE INSTALLED

REAR SAFETY CAGES

1. Refer to Figs. 2 and 3 and mount the two half sections of each safety cage hoop onto the outside of the rear ladder using 3/4" x 5/16" Dia. sheet metal screws.

NOTE: On bottom modules only - the lower entry loop sections are 31" in diameter, whereas the other sections are 27" diameter.

2. Secure the hoop sections together by mounting a vertical safety bar on the outside and installing 1" x 5/16" Dia. carriage bolts with the head ends located inside.

3. Install the other 4 vertical bars on the outside using 3/4" x 5/16" Dia. carriage bolts.

4. After all bars are installed, connect each safety cage loop to the dryer by drilling a small hole in the rear panel and installing a 1" x 5/16" Dia. sheet metal screw. See Fig. 4.

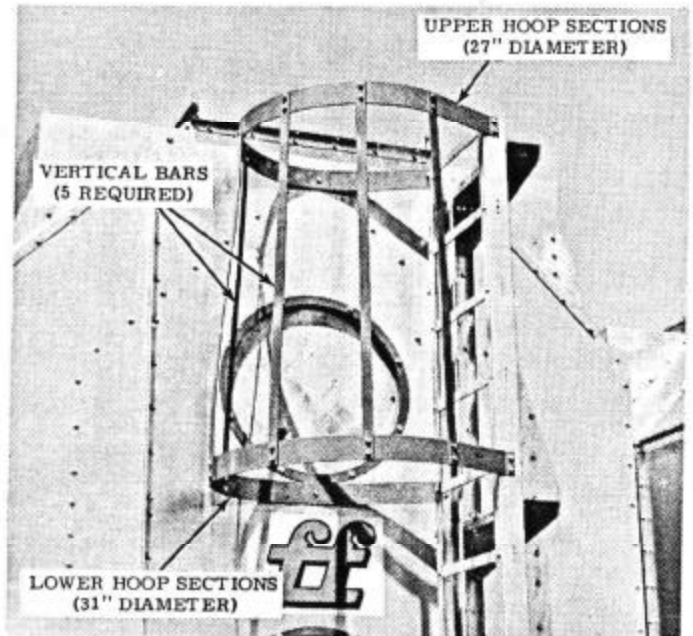


FIG. 2 - REAR SAFETY CAGE - BOTTOM MODULES

FARM FANS, INC.

8500 ELMWOOD AVENUE - INDIANAPOLIS, INDIANA 46203

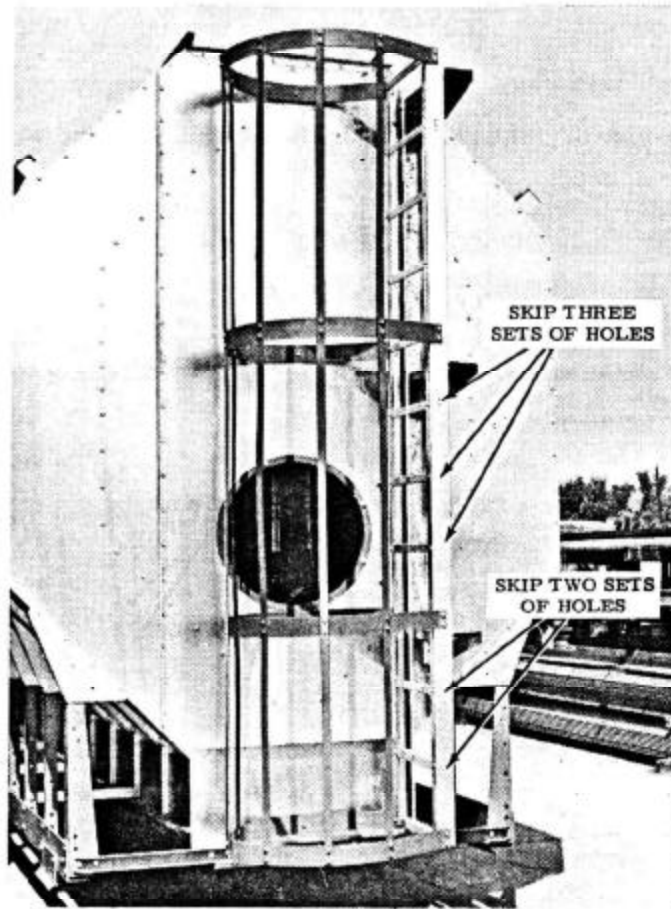


FIG. 3 - REAR SAFETY CAGE - INTERMEDIATE AND TOP MODULES

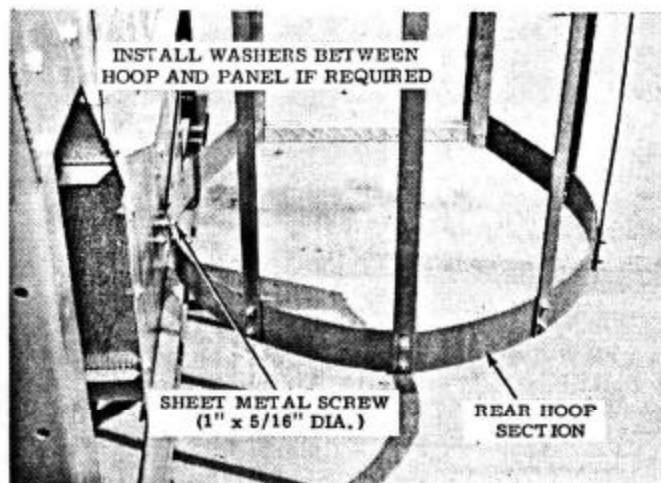


FIG. 4 - CONNECTING REAR HOOPS TO DRYER