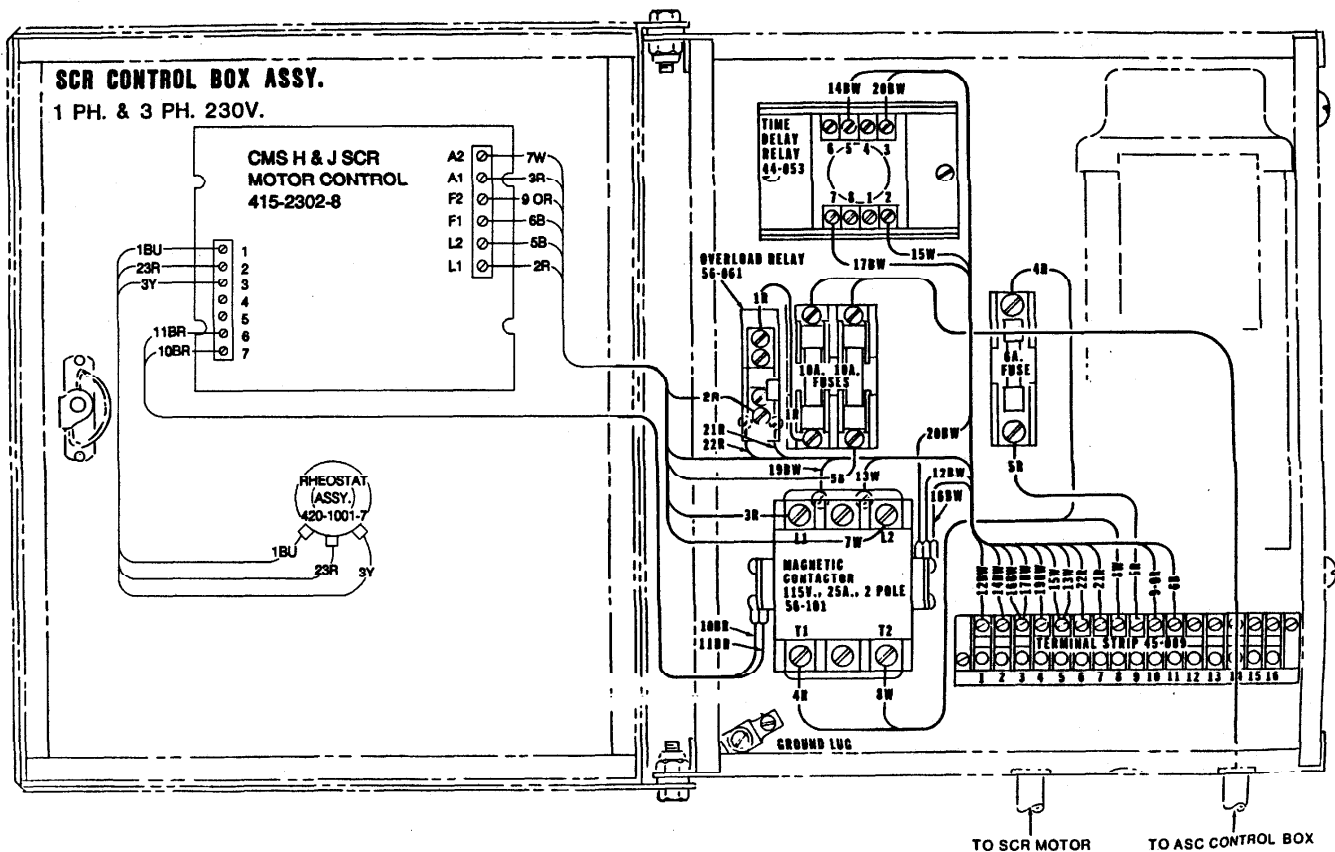


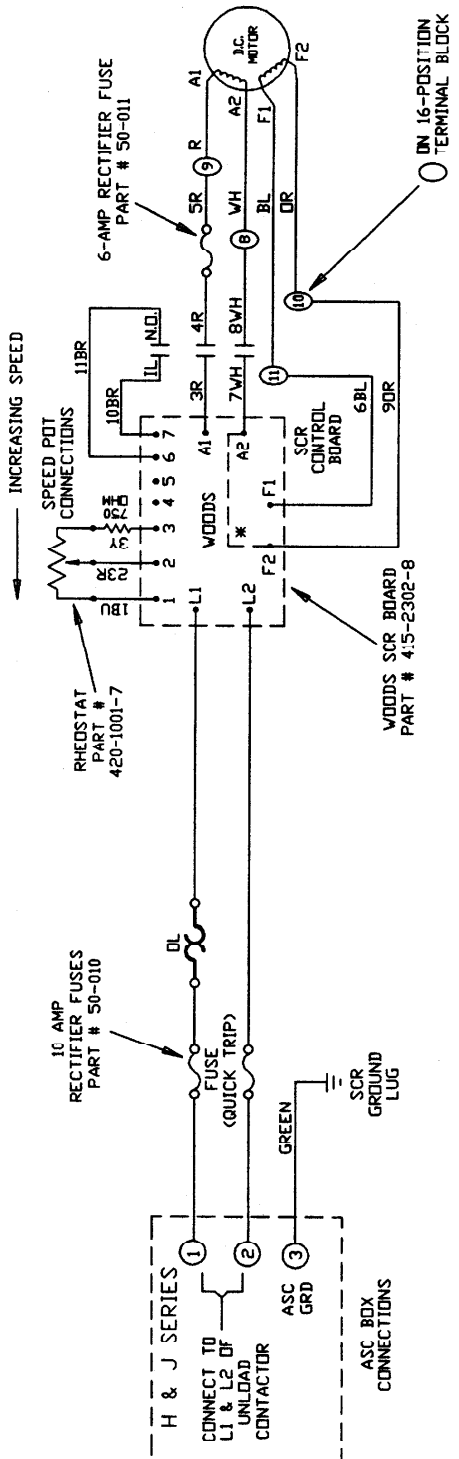
SUPPLEMENT SHEET TO SCR BULLETIN NO. SCR/J-02-2 (OPTIONAL SCR DRIVE INSTRUCTIONS FOR CMS-J SERIES DRYERS)

The optional SCR meter roll drive for the CMS-J series Dryers is now being equipped with an improved motor control board assembly, part no. 415-2302-8.

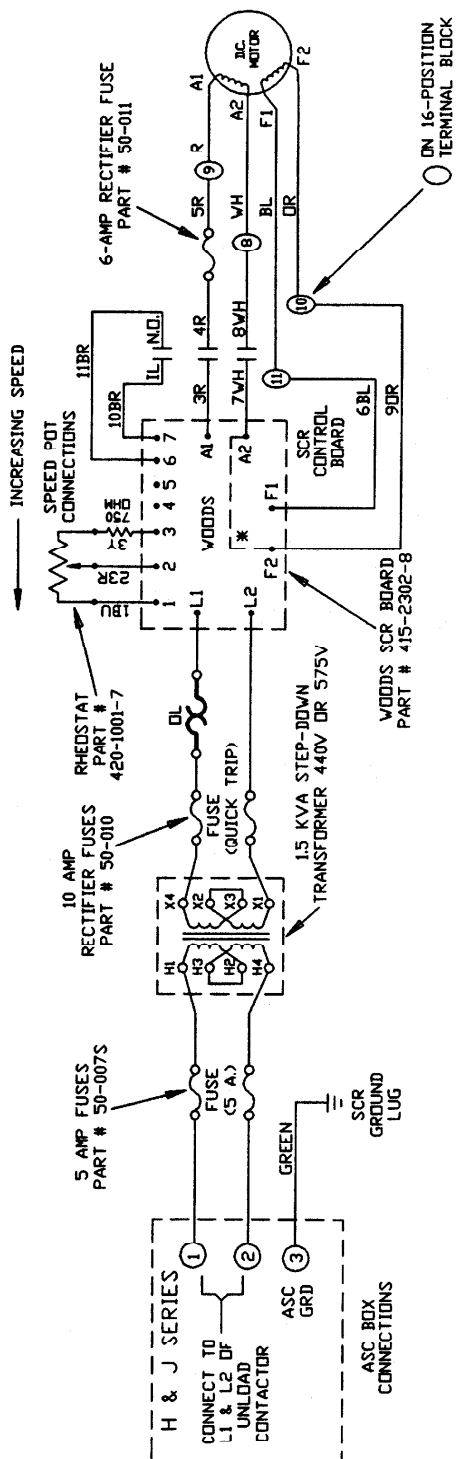
This heavier-duty board assembly is located within the SCR control box and requires different wiring connections than the earlier assembly illustrated within the existing SCR/J-02-2 manual.

Please include this sheet showing the proper wire connections for the new board within your manual and retain it for possible future service reference.





SCR POWER CIRCUIT - 230V
WOODS MODEL E2A0015Z
* A2-F2 CONNECTION MADE INTERNALLY



SCR POWER CIRCUIT - 450V or 575V
WOODS MODEL E2A0015Z
* A2-F2 CONNECTION MADE INTERNALLY