

Figure 1 Overall View

Date: 03-24-11

Printed in the U.S.A.  
Copyright © 2011 by GSI Group  
www.gsiag.com

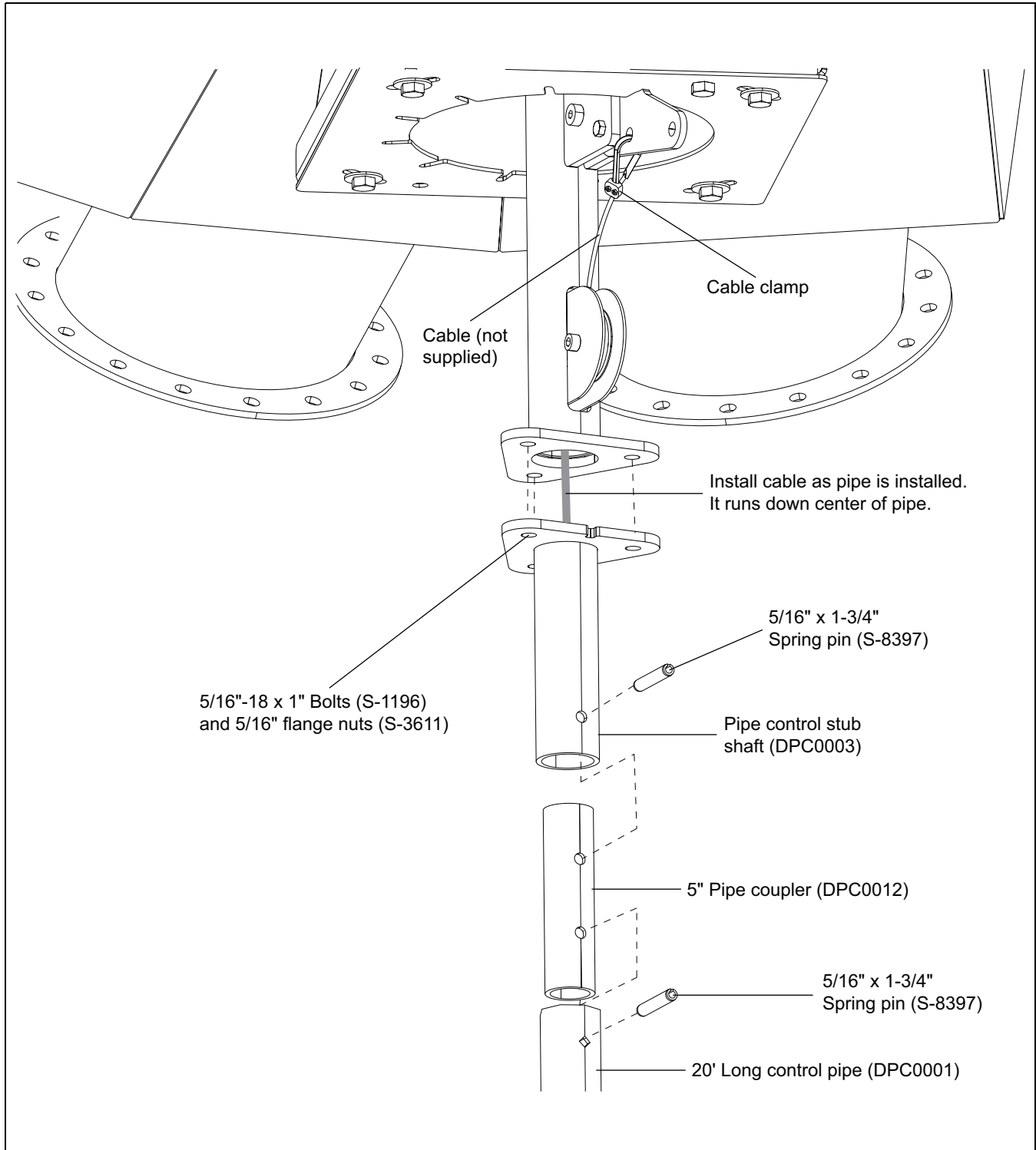


PNEG-1793

PNEG-1793  
Page 1 of 8

## Distributor Pipe Control - Farm/Commercial

1. Bolt stub shaft (DPC0003) to the index tube assembly, aligning notch in flange with sheave and using three (3) 5/16" x 1" HHCS bolts (S-1196) and three (3) 5/16" flange nuts (S-3611).
2. Using the 5/16" x 1-3/4" roll pins (S-8397), connect the 5" pipe coupler (DPC0012) to the stub shaft.
3. Install cable (not included) to connect the distributor index assembly to the control lever. Secure the cable to the distributor index assembly as shown using a cable clamp. Run the cable down the center of each piece of pipe as they are attached. (*See Figure 2.*)



**Figure 2** Stub Shaft and Cable

## Distributor Pipe Control - Farm/Commercial

4. Install the 20' control pipes (DPC0001) using the supplied hardware 5/16" x 1-3/4" roll pins (S-8397) and 5" pipe couplers (DPC0012). (See Figure 3.)

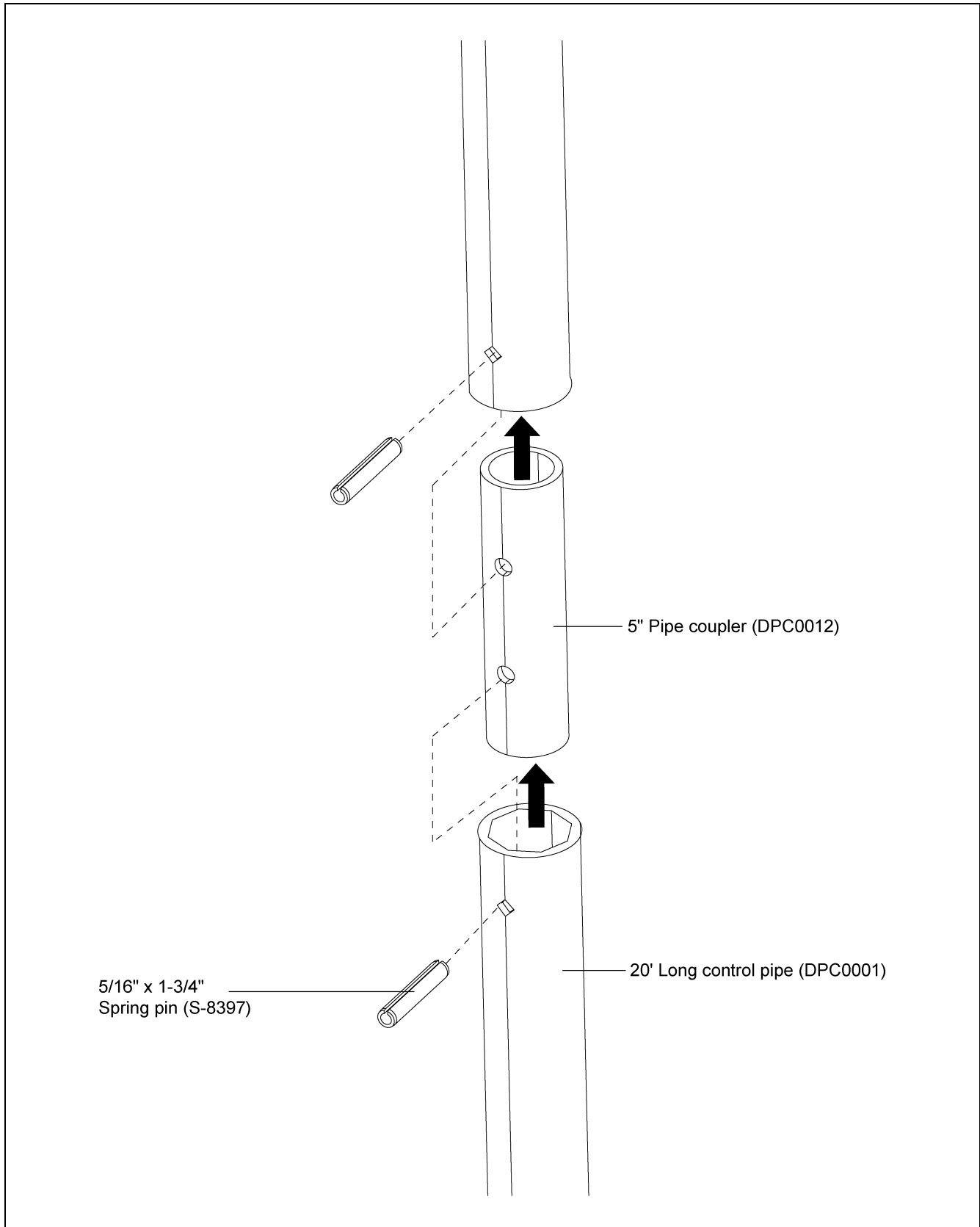
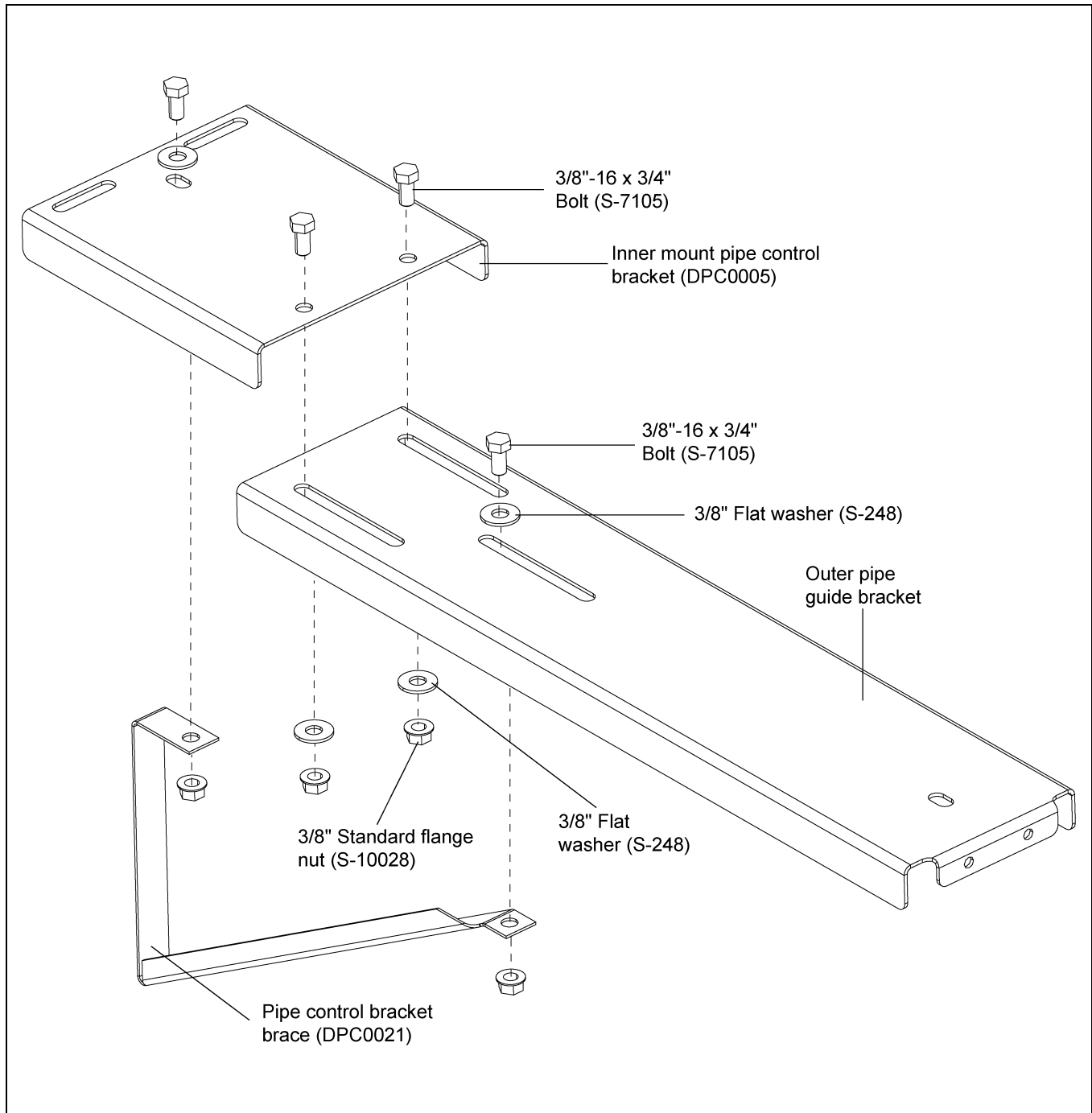


Figure 3 Pipe Connections

## Distributor Pipe Control - Farm/Commercial

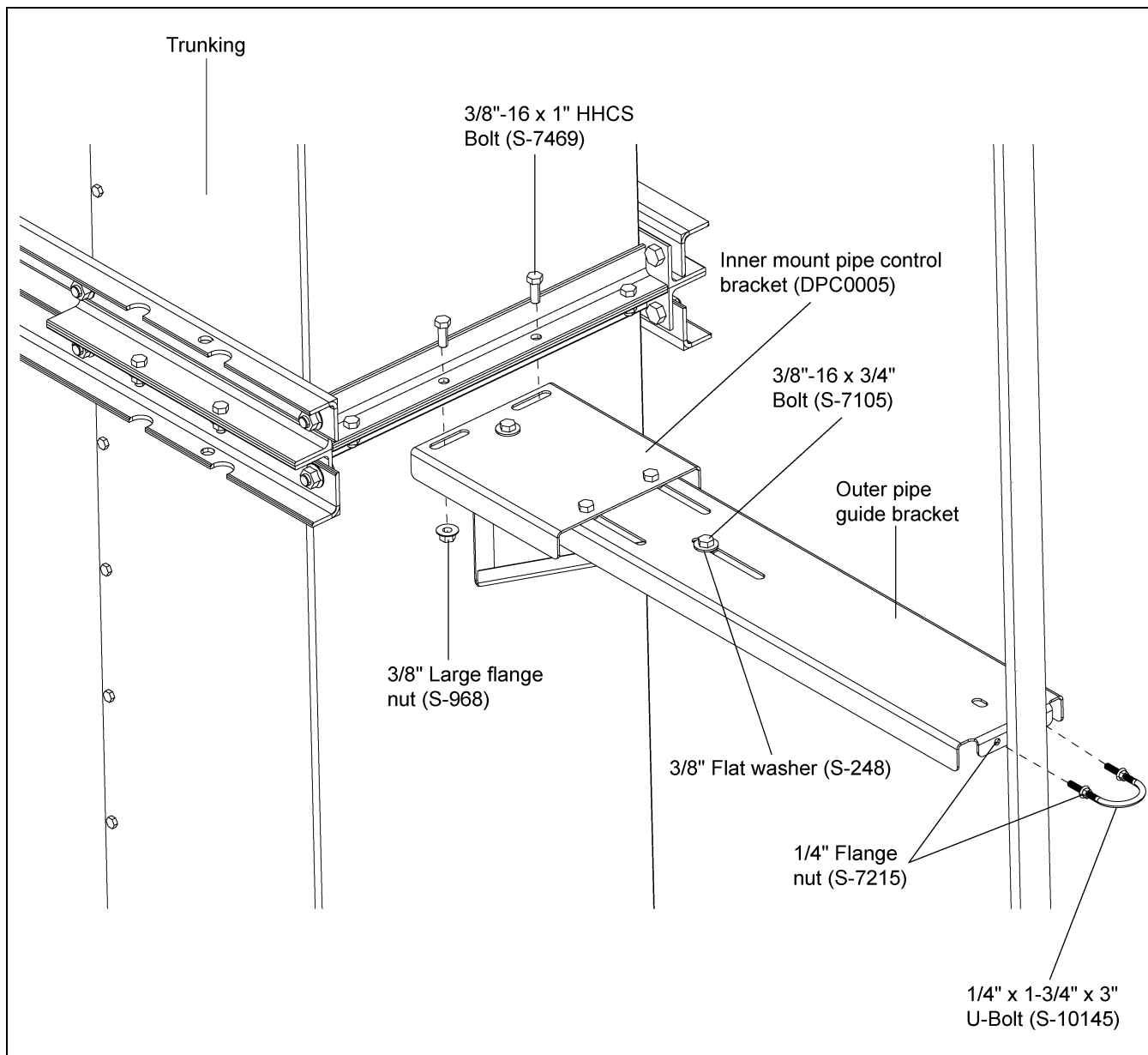
5. Assemble intermediate guide assemblies by attaching the inner mount pipe control bracket (DPC0005) to the outer pipe guide bracket using two (2) 3/8" x 3/4" bolts (S-7105), two (2) 3/8" flat washers (S-248) and two (2) 3/8" standard flange nuts (S-10028). Use one 3/8" x 3/4" bolt (S-7105) and one 3/8" flat washer (S-248) to secure the inner mount pipe control bracket (DPC0005) to the pipe control bracket brace (DPC0021). Secure the bottom of the pipe control bracket brace (DPC0021) to the middle slot on the outer pipe guide bracket (DPC0018) with one 3/8" x 3/4" bolt (S-7105), one 3/8" flat washer (S-248) and one 3/8" standard flange nut (S-10028).  
(See Figure 4.)



**Figure 4** Pipe Control Guide Brackets (This is the same assembly for both intermediate and control lever assemblies.)

## Distributor Pipe Control - Farm/Commercial

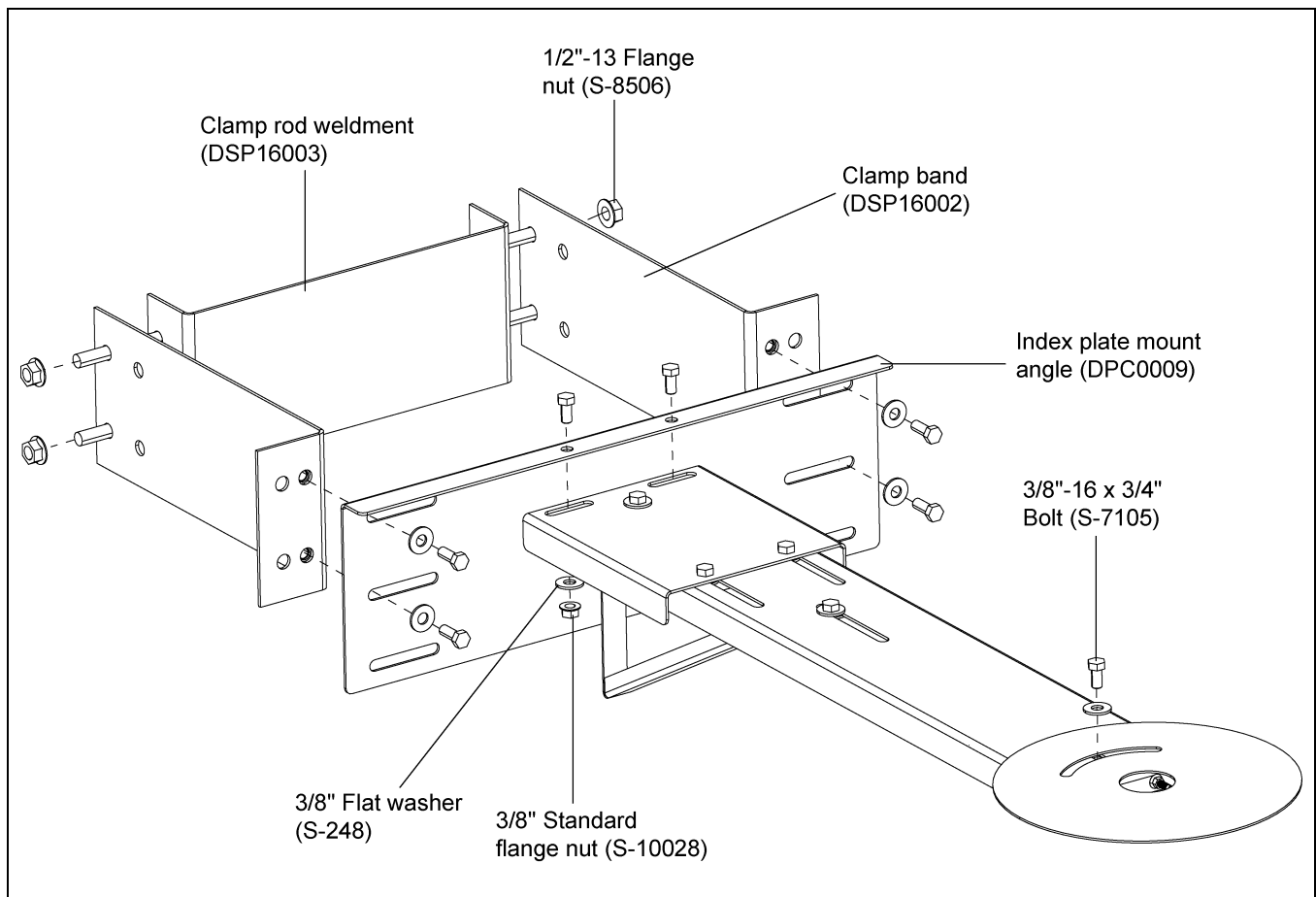
6. Attach the inner mount pipe control bracket (DPC0005) to the trunking using two (2) 3/8" x 1" HHCS bolts (S-7469) and two (2) 3/8" large flange nuts (S-968), as shown in [Figure 5](#).
7. Attach the control pipe to the intermediate guides with a 1/4" x 1-3/4" x 3" U-bolt (S-10145) and four (4) 1/4" flange nuts (S-7215). ([See Figure 5](#))



**Figure 5** Intermediate Guide to Trunking

## Distributor Pipe Control - Farm/Commercial

8. Assemble the inner mount pipe control bracket (DPC0005) to the pipe control bracket brace (DPC0021) using the same method as the intermediate guide assembly. (See Figure 4 on Page 4.) Attach the eight (8) hole index plate (DPC0010) to the outer pipe guide bracket (DPC0018) using 3/8" x 3/4" bolt (S-7105), 3/8" flat washer (S-248) and 3/8" flange nut (S-10028).
9. Assemble the clamp band as shown by fastening the clamp rod weldment (DSP16003) to the clamp band (DSP16002) using 1/2" flange nuts (S-8506) onto the rod ends. Attach the index plate mount angle (DPC0009) to the front of the clamp bands (DSP16002) with 3/8" x 1" bolts (S-7469), 3/8" flat washers (S-248) and 3/8" flange nuts (S-10028).
10. Attach the control lever assembly to the trunking using two (2) 3/8" x 1" bolts (S-7469), 3/8" flat washers (S-248) and 3/8" flange nuts (S-10028) and secure to the guide using 1/4" x 3/4" x 3" U-bolt (S-10145) and four (4) 1/4" flange nuts (S-7215). (See Figure 6.)



**Figure 6** Control Lever Assembly to Trunking

## Distributor Pipe Control - Farm/Commercial

11. Cut last section of piping to desired length and drill hole for 5/16" roll pin. Guide the last section of control pipe through the index plate (DPC0010).
12. Attach the pipe control lever assembly (DPC0015) to the bottom of the pipe using a 5/16" x 1-3/4" roll pin (S-8397).
13. Remove guard (DPC0022) from the control handle assembly. Guide cable through end of control handle (DPC0016). Pull cable down with enough tension to keep cable taught, but not enough to pull down on the distributor index assembly. Secure cable with cable clamp (not supplied). Replace guard (DPC0022). (See Figure 7.)

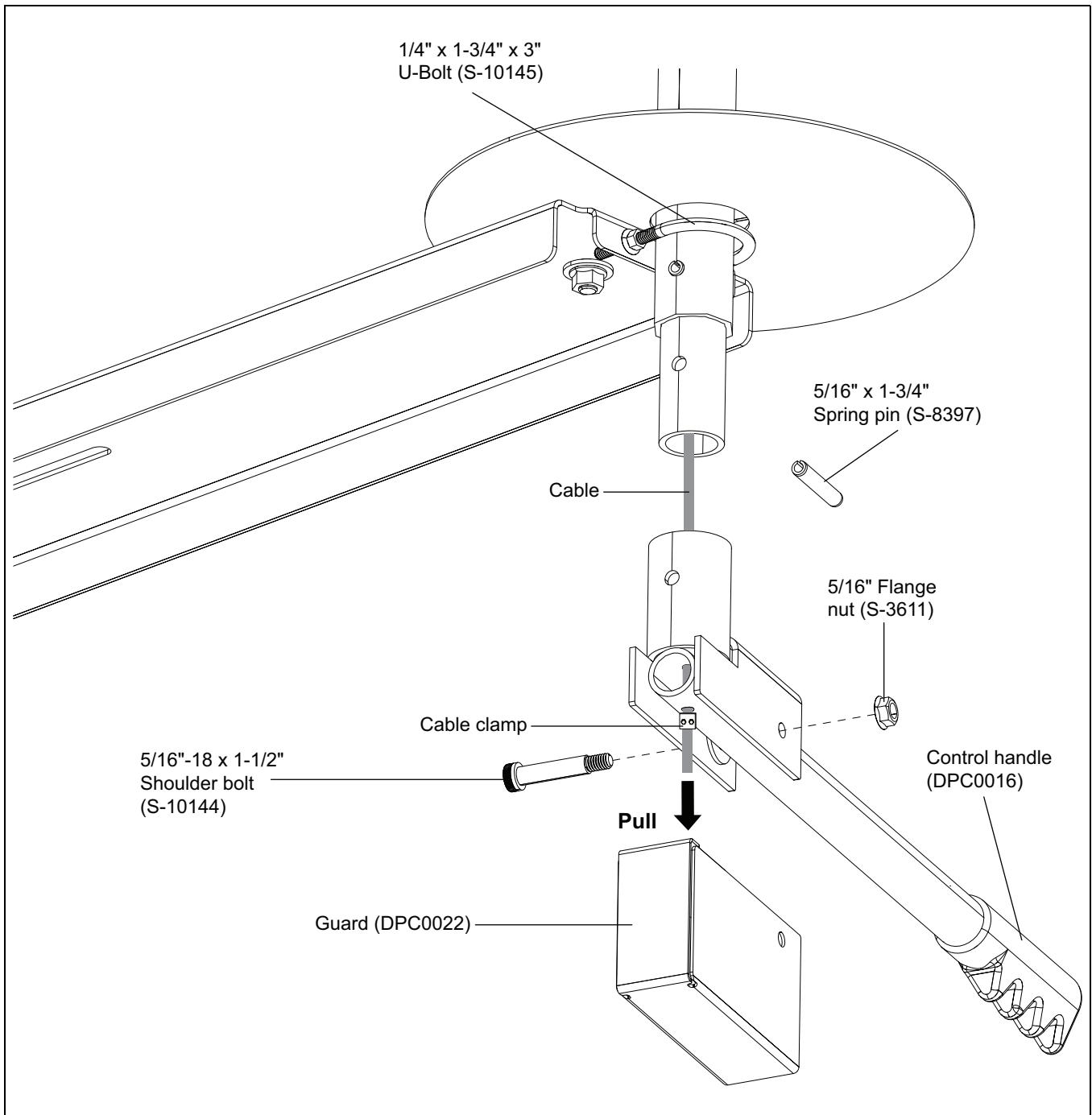
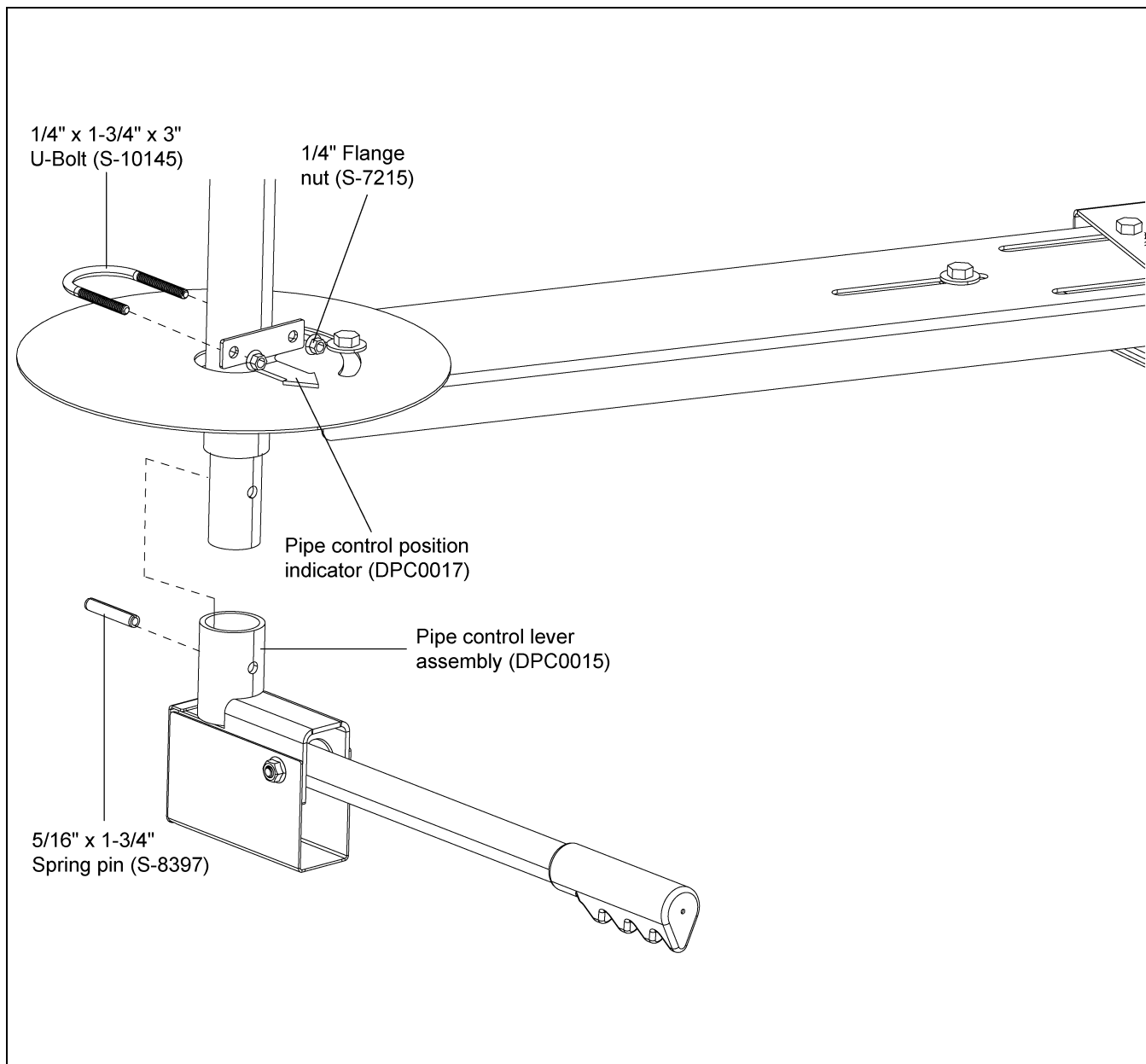


Figure 7 Bottom Cable

## Distributor Pipe Control - Farm/Commercial

14. Install the position indicator (DPC0017) to the pipe using the U-bolt (S-10145) and 1/4" flange nuts (S-7215). (See Figure 8.)



**Figure 8** Pipe Control Lever and Position Indicator

15. Apply the provided numbered decals as desired to denote the distributor spout position.