



### Installation Instructions

1. Place template on bottom of head section on the take-up end. Align edges of template with the bottom housing and fasten with vise-grips or clamps.
2. Using the template as a guide, drill six (6) 9/32" holes into the bottom of the housing. (*See Figure 1.*)

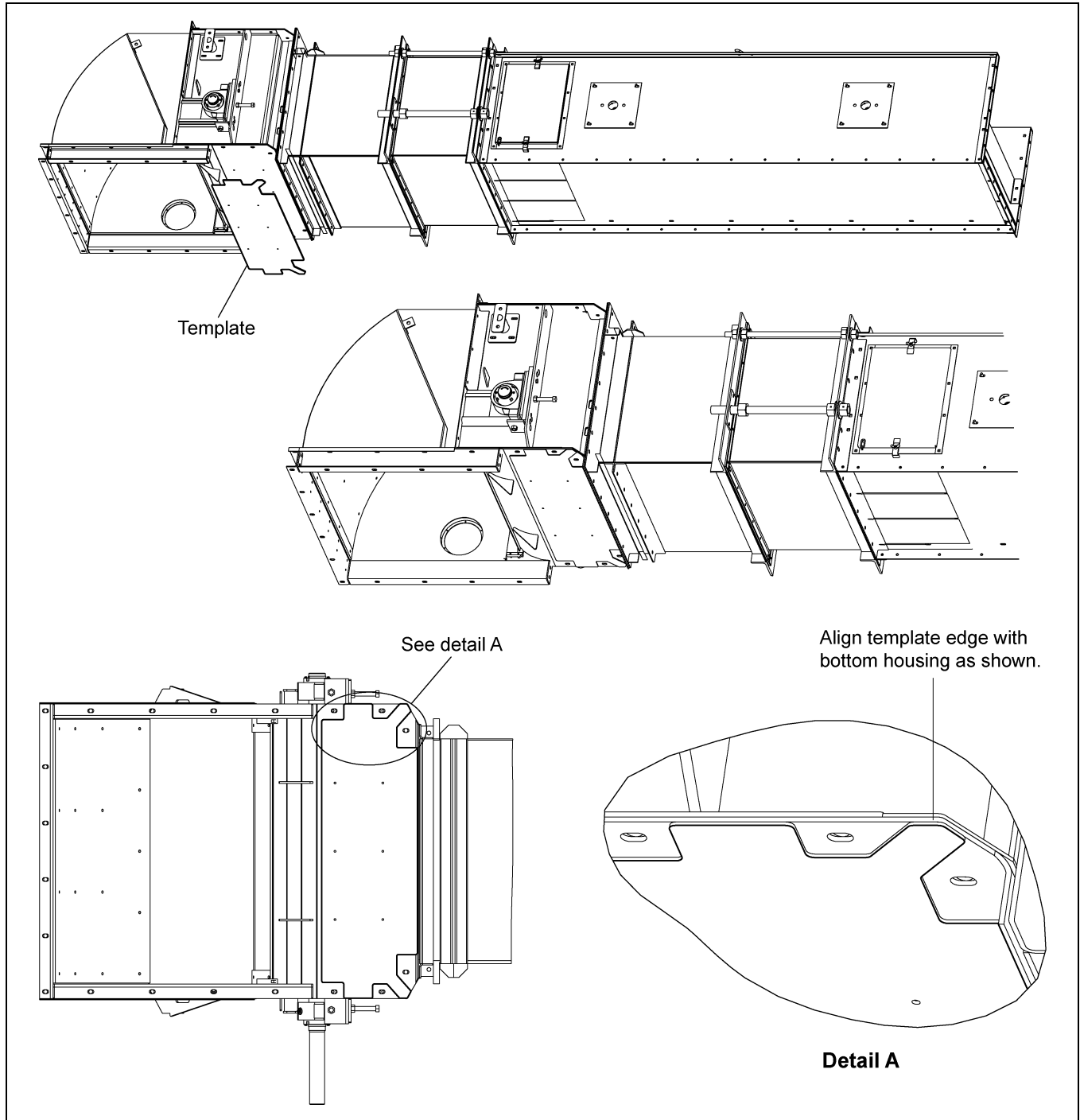


Figure 1

Date: 03-18-13

Printed in the U.S.A.  
Copyright © 2013 by GSI Group  
www.gsiag.com



PNEG-1922

PNEG-1922

Page 1 of 5

CN-304156

## Reverse Head/Take-Up Bridge Belt Conveyor Installation

3. Fasten the UHMW sheet to the head housing using six (6) 1/4"-20 x 3/4" button head socket cap screw (or equivalent).
4. The UHMW take-up bridge will then go through the take-up and **UNDER THE INTERMEDIATE LINER** using existing hardware. (See Figure 2 below to Figure 5 on Page 4.)

**NOTE:** Do not overtighten the hardware. Overtightening will pull the bolt heads through the liner(s).

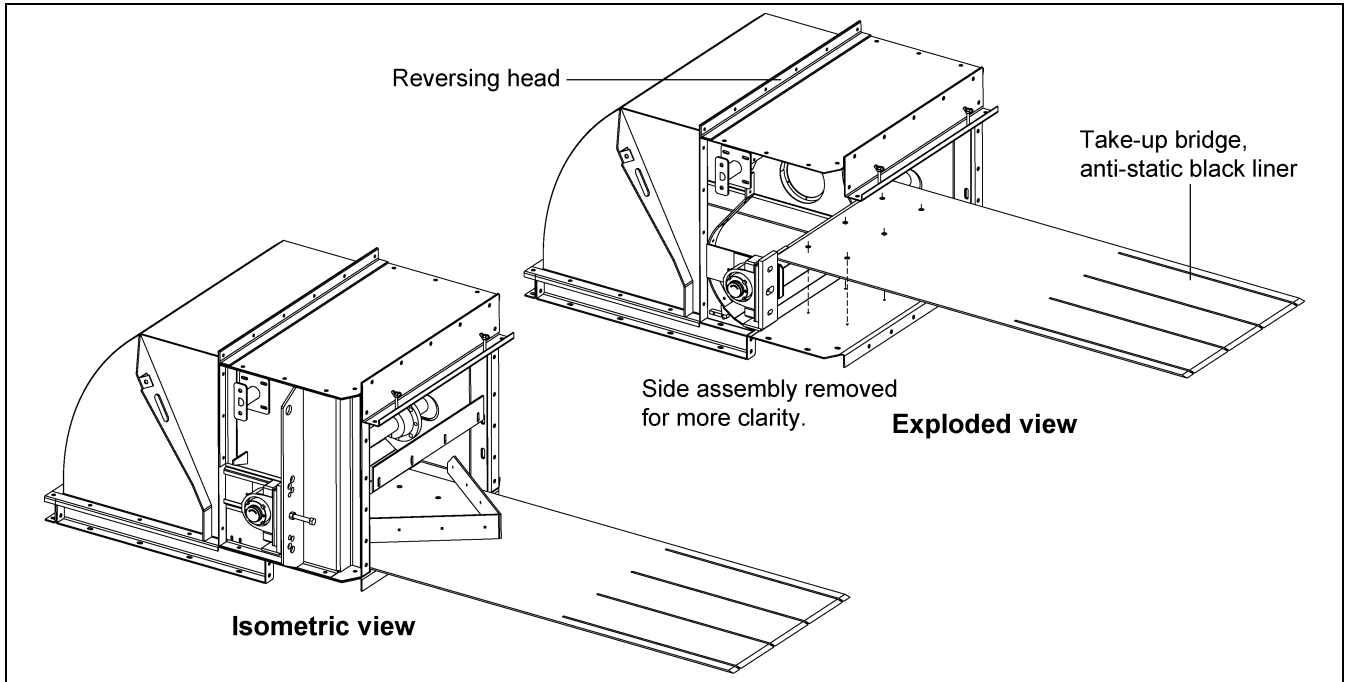


Figure 2

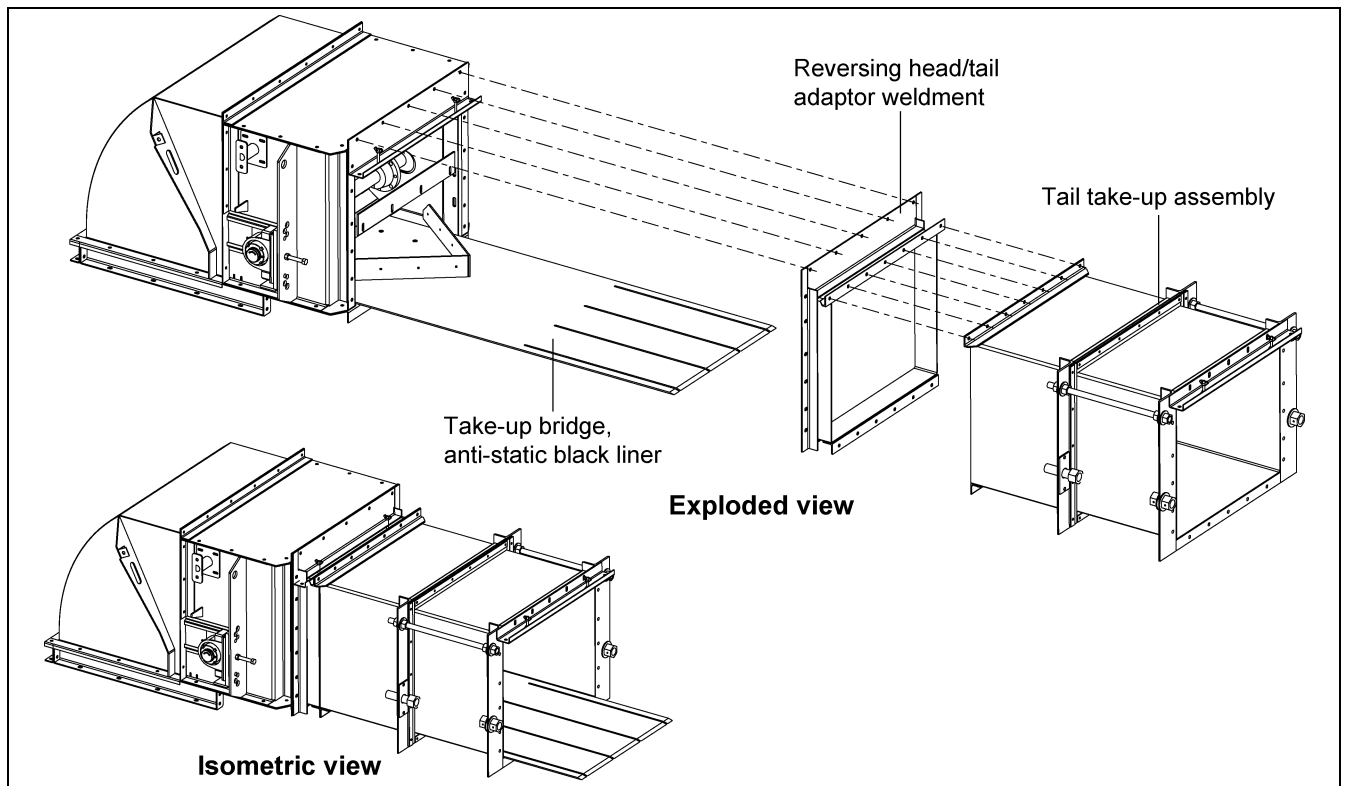


Figure 3

# Reverse Head/Take-Up Bridge Belt Conveyor Installation

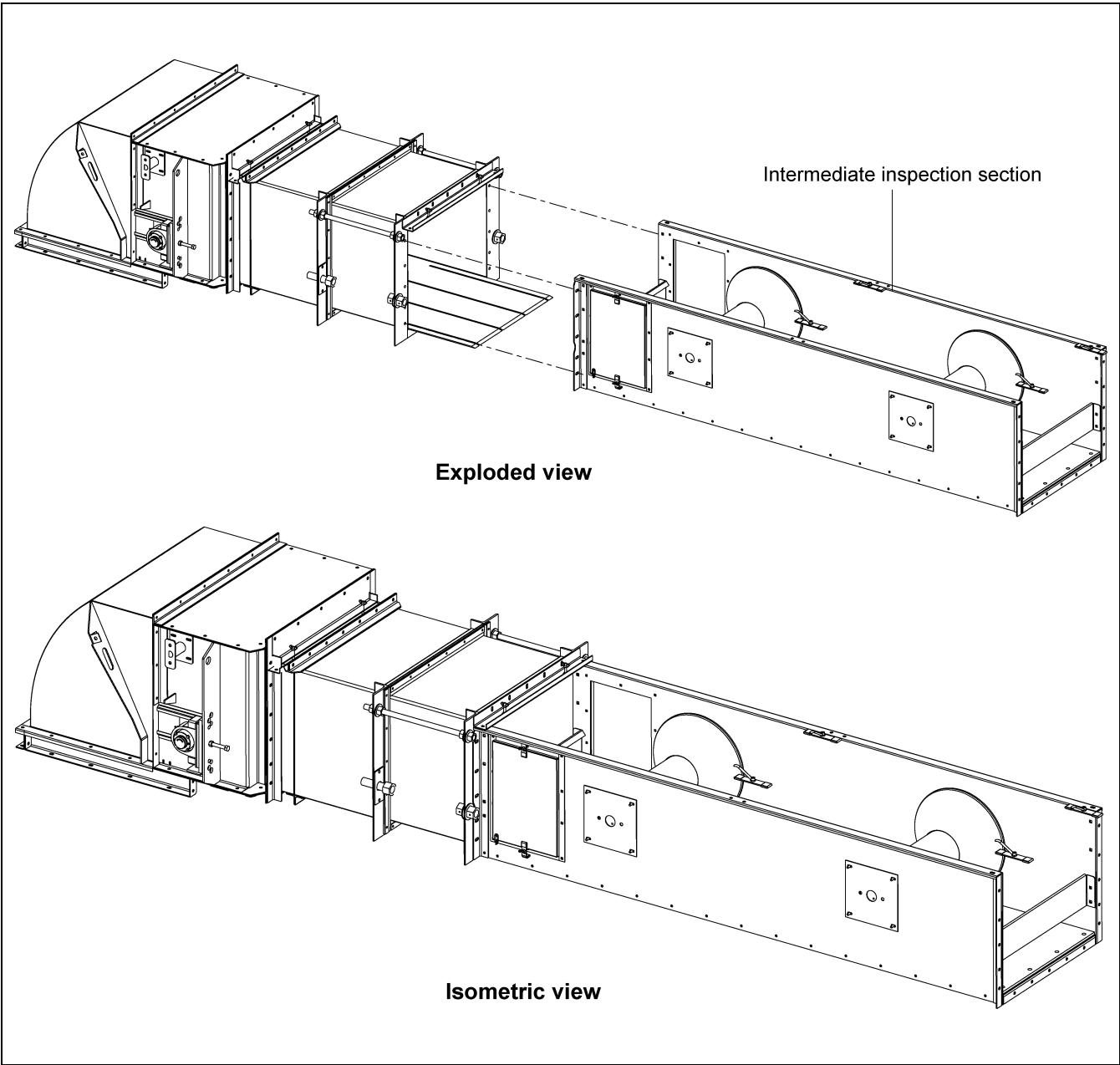


Figure 4

# Reverse Head/Take-Up Bridge Belt Conveyor Installation

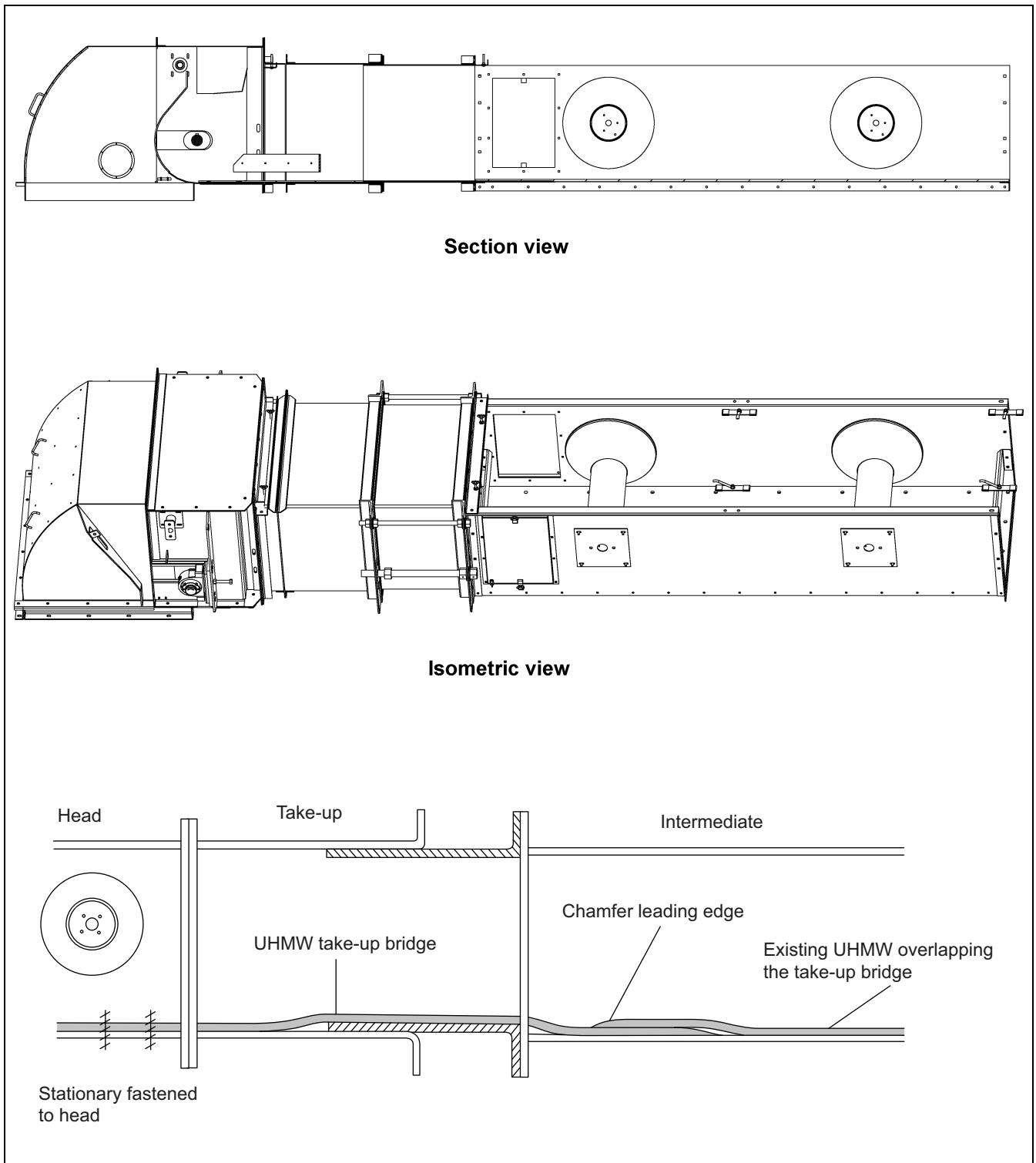
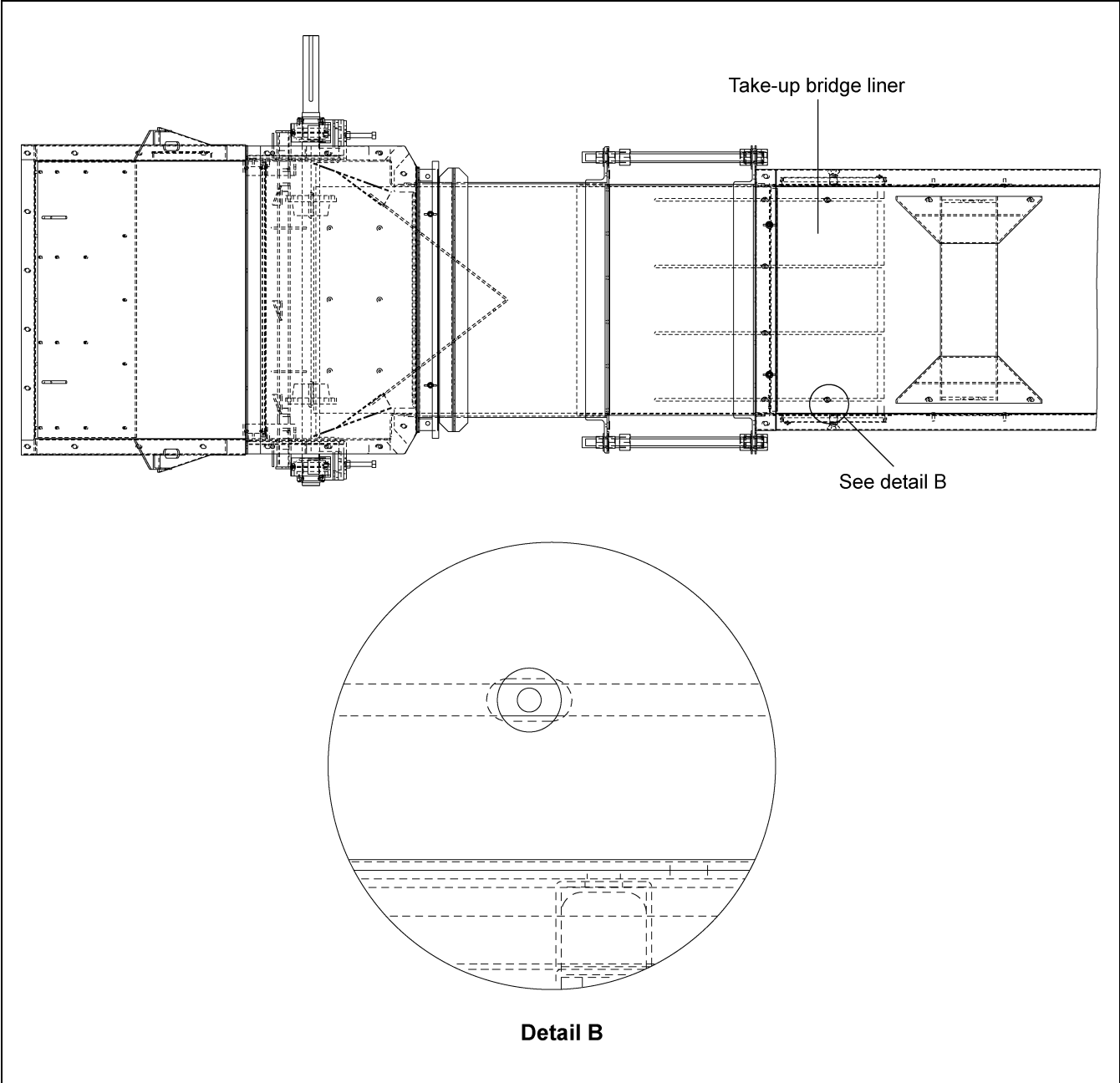


Figure 5

# Reverse Head/Take-Up Bridge Belt Conveyor Installation

**NOTE:** The existing hardware goes into the slots as shown in [Figure 6](#).



**Figure 6** Top View of UHMW Take-Up Bridge