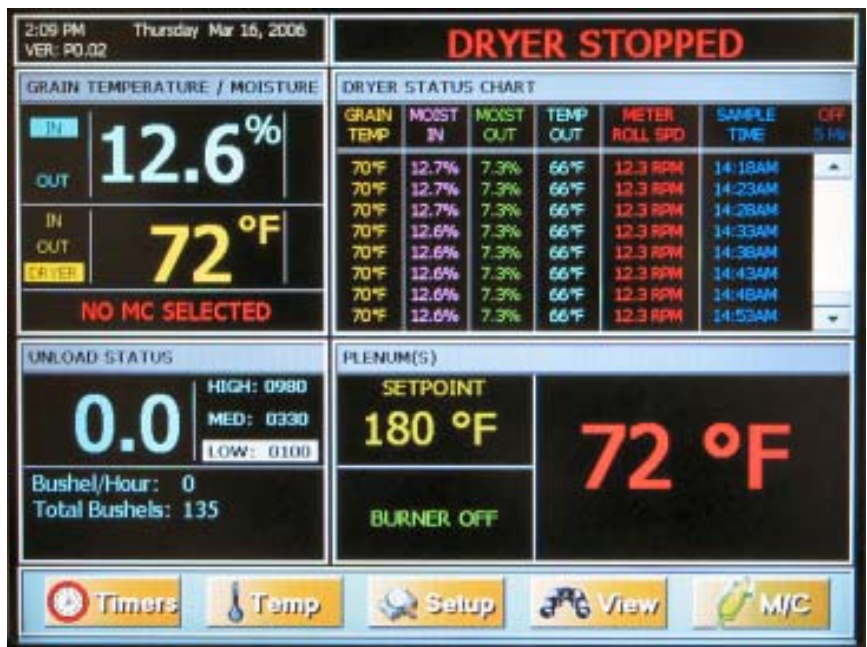


Dryer Control Computer Programming

Instruction Manual

PNEG-1506

Date: 3-21-2006

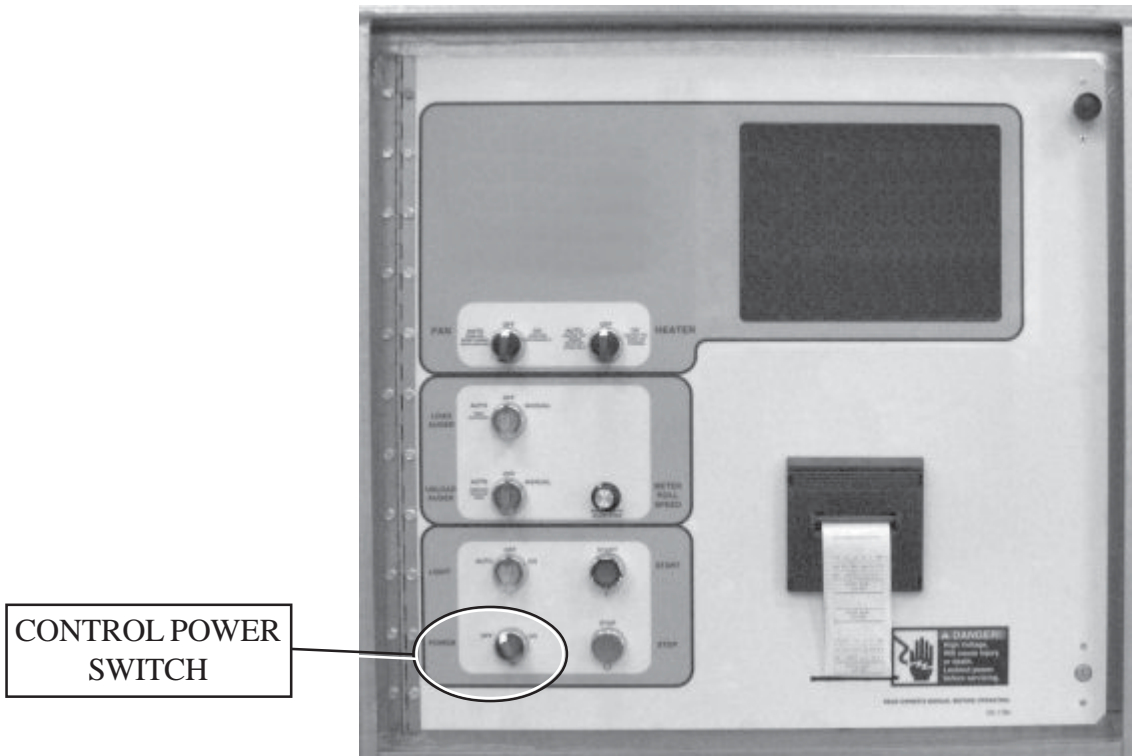


GSI
a division of
THE GSI GROUP



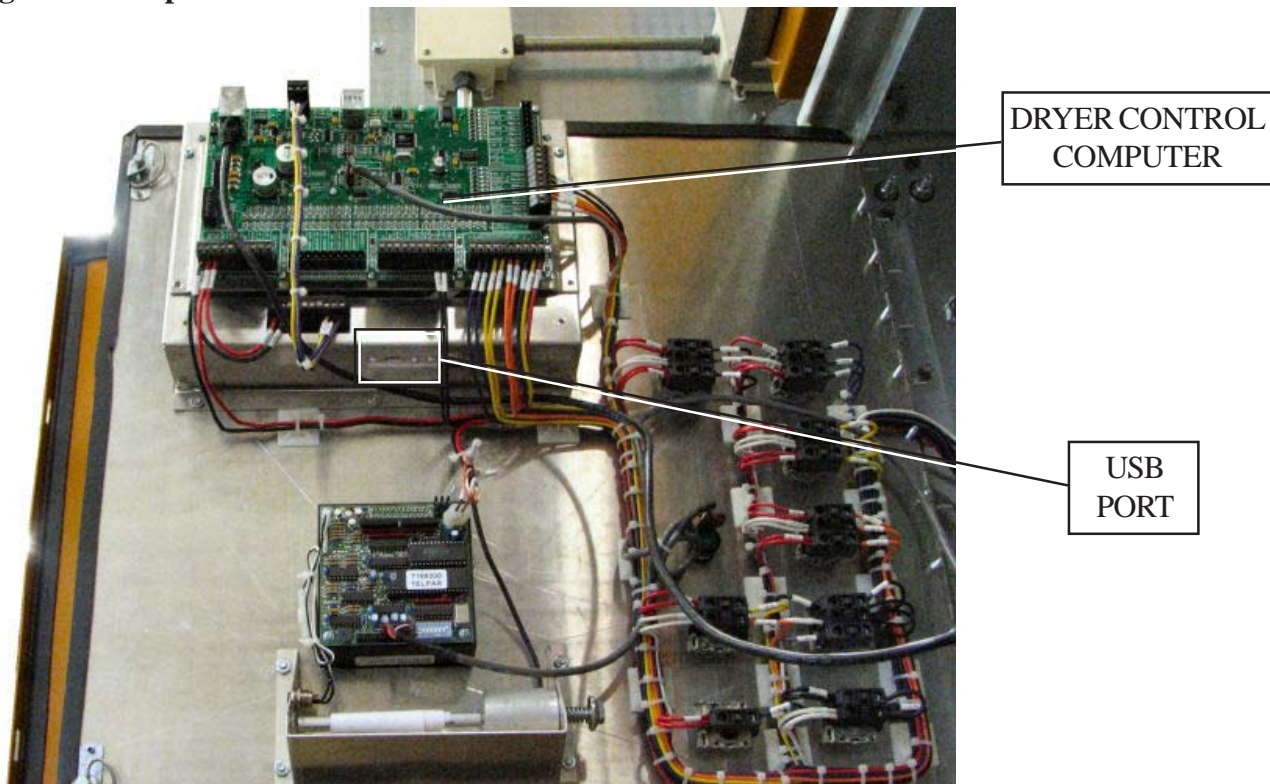
PNEG-1506

Figure 1: Control panel



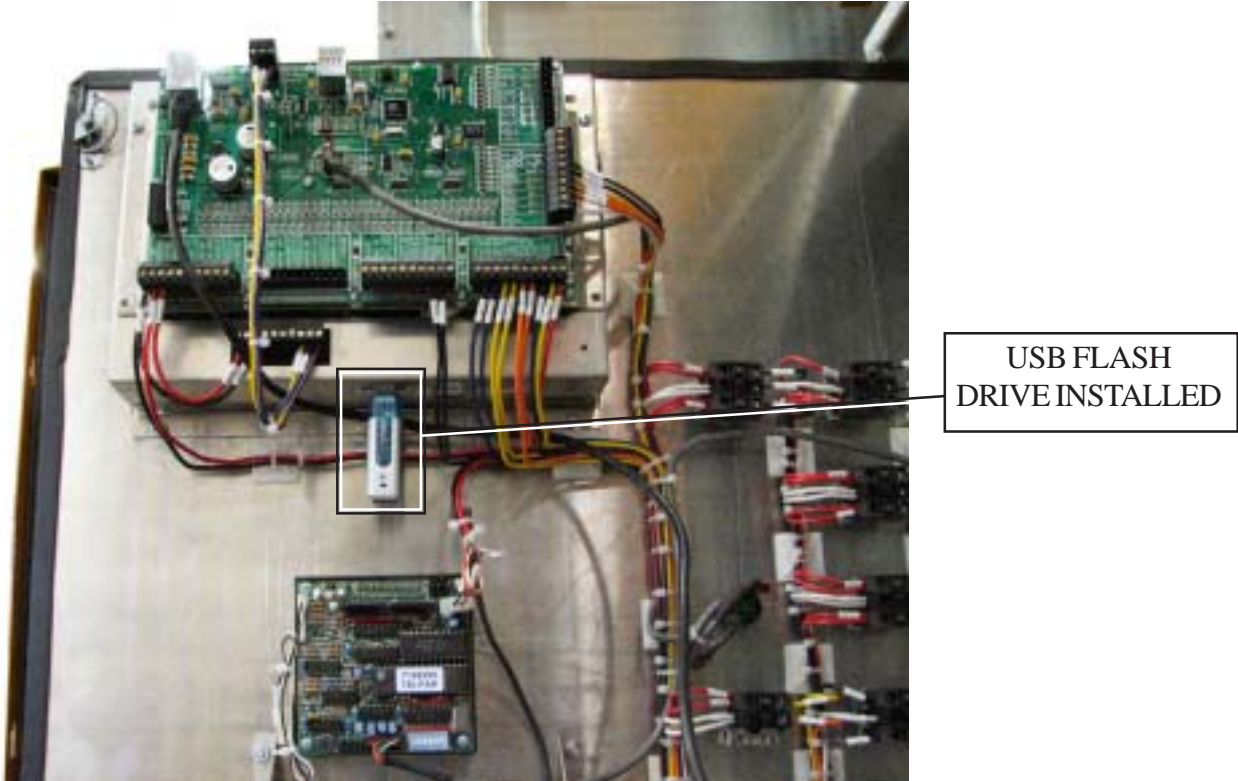
1.) Turn off the control power. (see figure 1).

Figure 2: USB port location



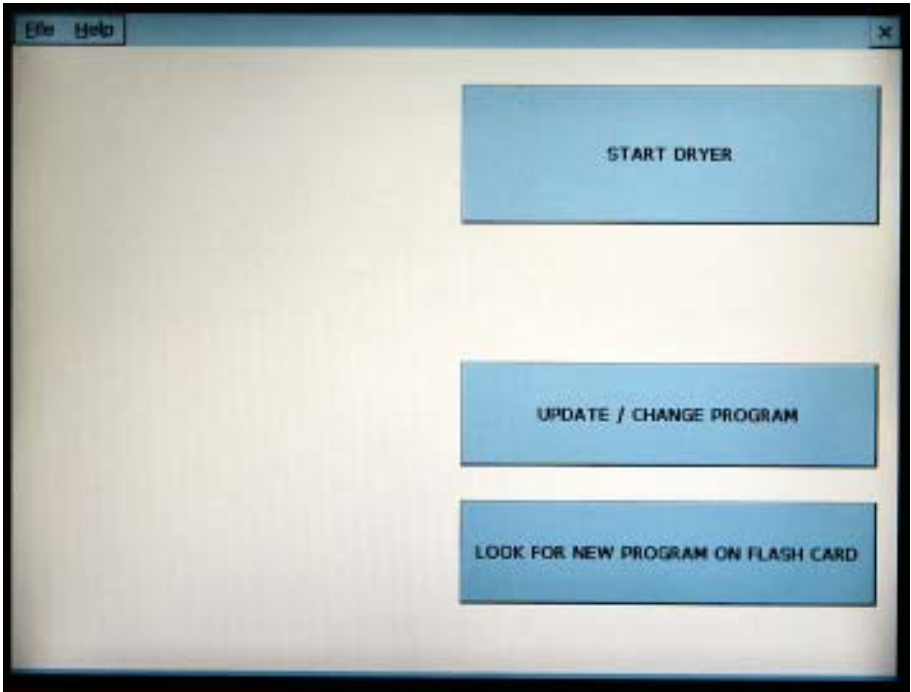
2.) Locate the USB port on the bottom of the Dryer Control Computer (see figure 2). The Dryer Control Computer is on the back side of the dryer control panel.

Figure 3: USB flash drive inserted in USB port



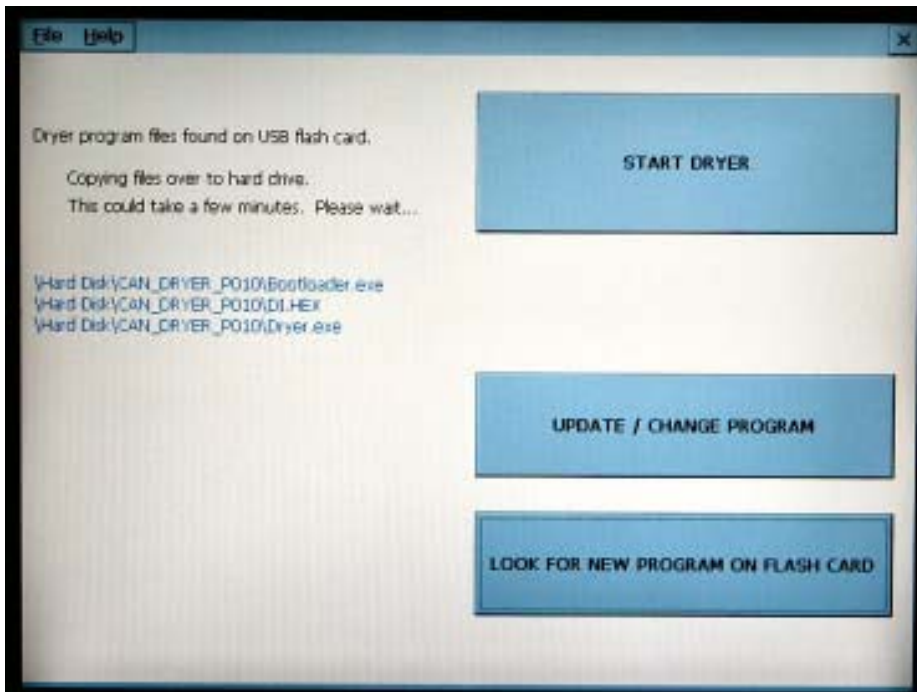
- 3.) Insert USB flash drive into USB port (see figure 3).
- 4.) Turn on the dryer control power (see figure 1). The dryer control computer will start.

Fig. 4: Boot screen



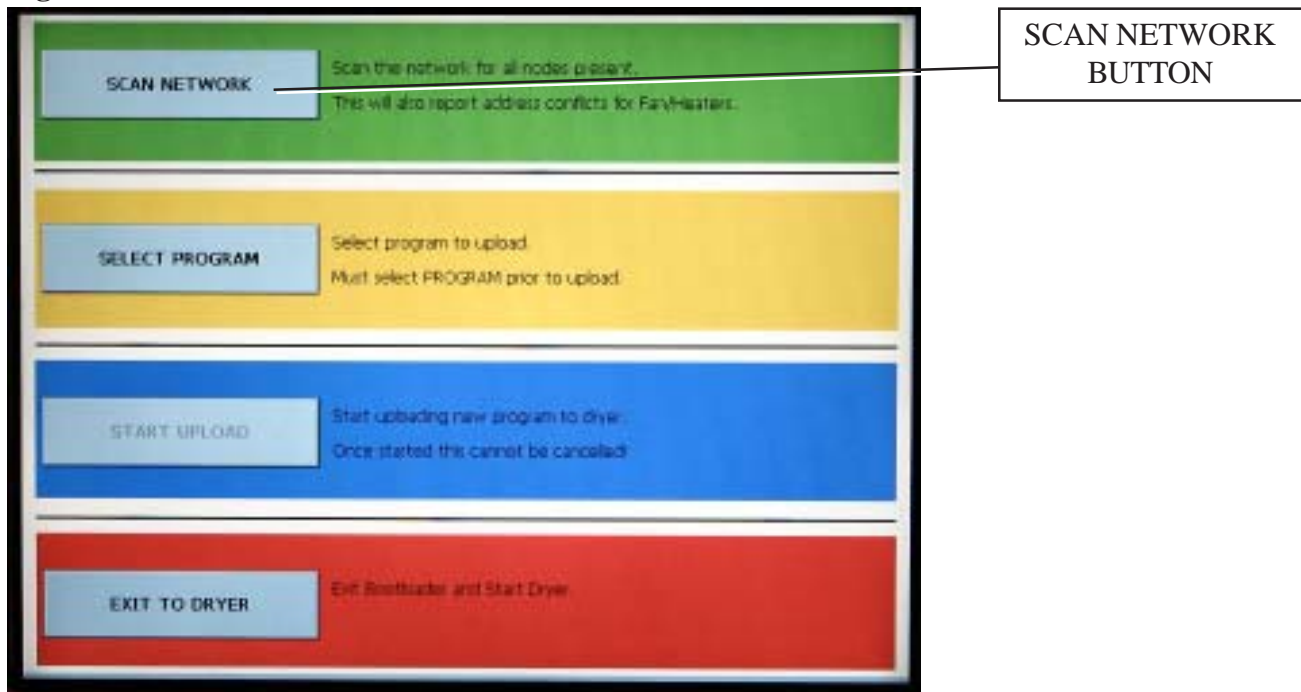
- 5.) When the boot screen appears touch the **Look For New Program on Flash Card** button.
NOTE: Touching the **Update / Change Program** button will allow you to change to a different program that is already on the computer hard drive.

Fig. 5: Copying files from USB flash drive to dryer control computer



6.) The display will now confirm that program files were found on USB flash drive and that they are being copied to the dryer control computer hard drive.

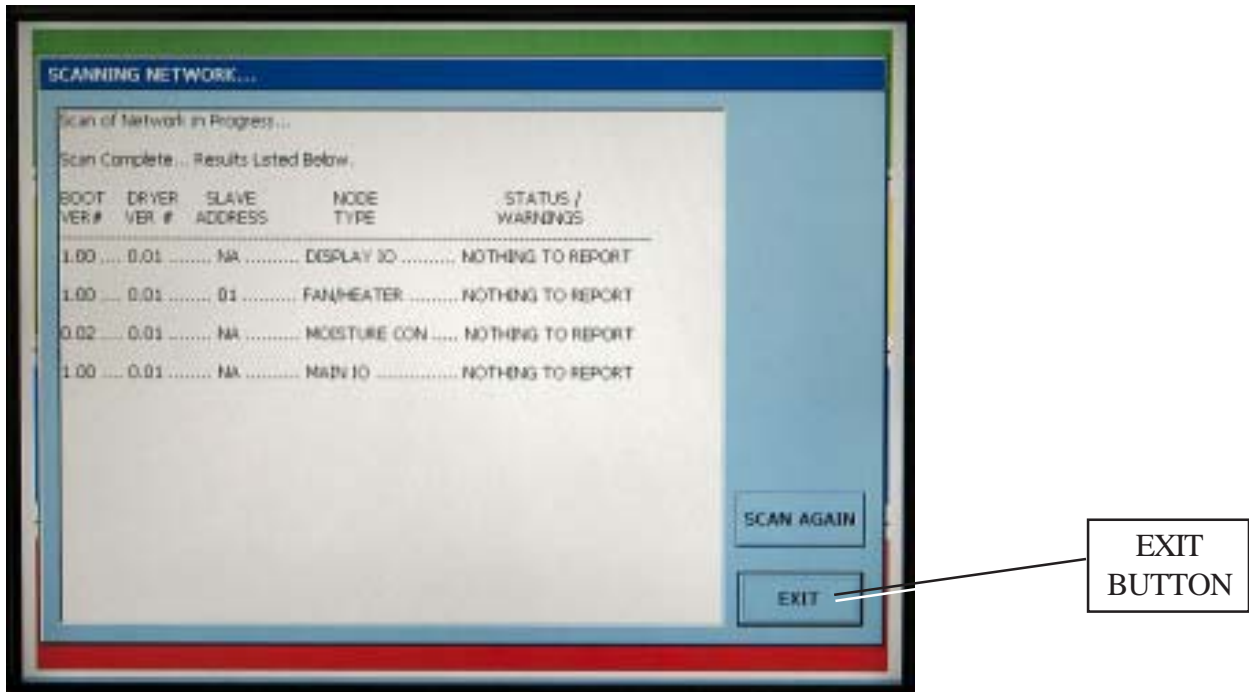
Fig. 6: Scan network



7.) After the program files are transferred, the Boot loader screen will appear. Begin by touching the **Scan Network** button.

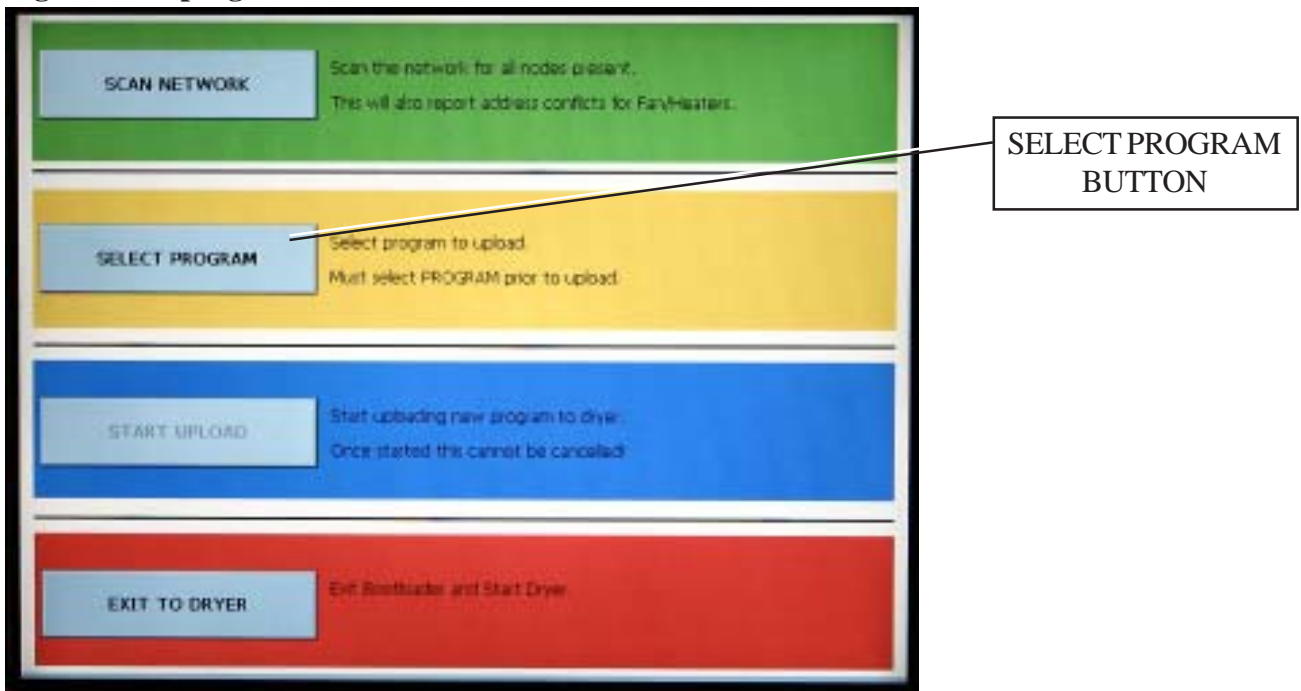
This scan will check your dryer to make sure all parts of the control system are communicating correctly.

Fig. 7: Network scan complete



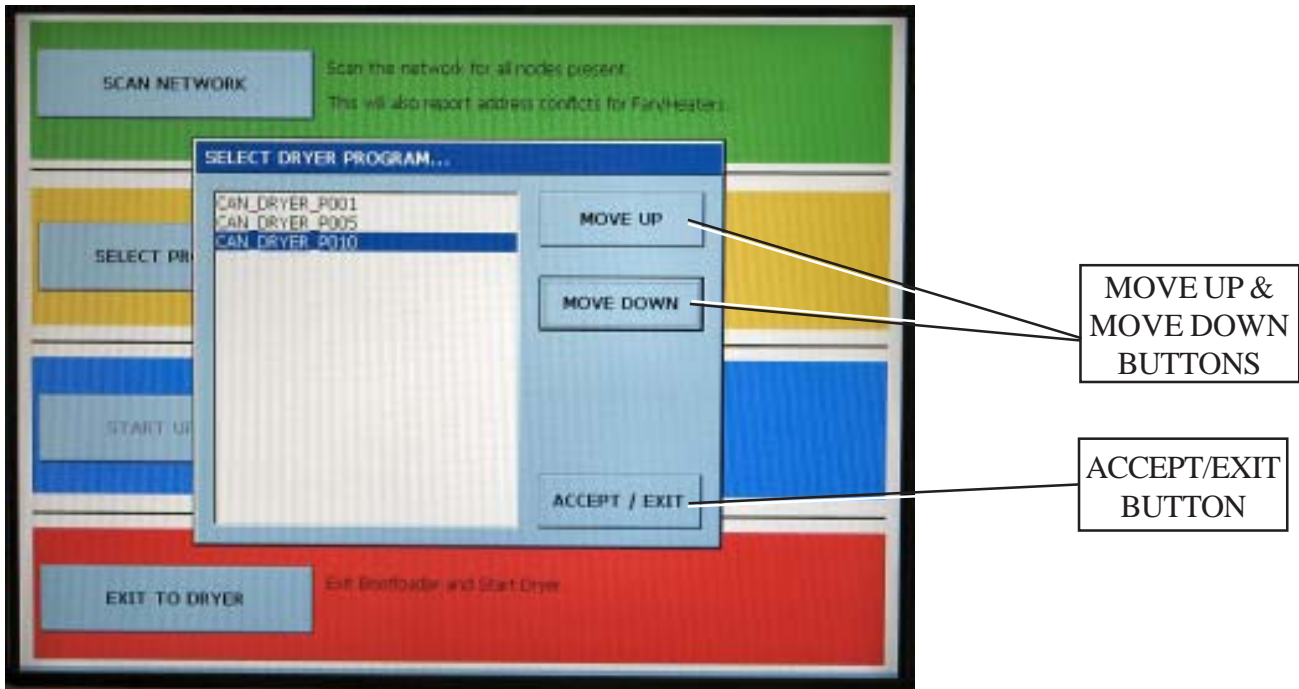
8.) After the scan is complete the Display I/O, Main I/O, moisture control, and the Fan/Heater(s) should be shown as Nothing To Report (see figure 7). Touch the **Exit** button.

Fig. 8: Select program



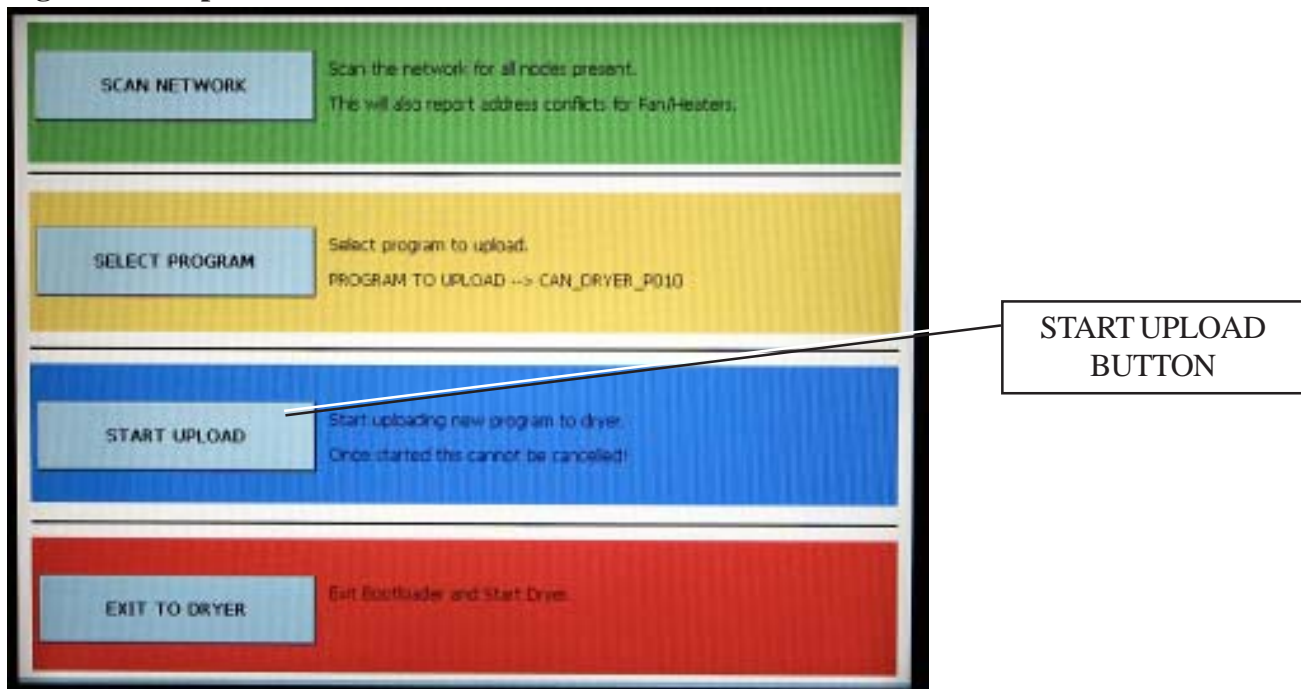
9.) Touch the **Select Program** button.

Fig. 9: Select dryer program.



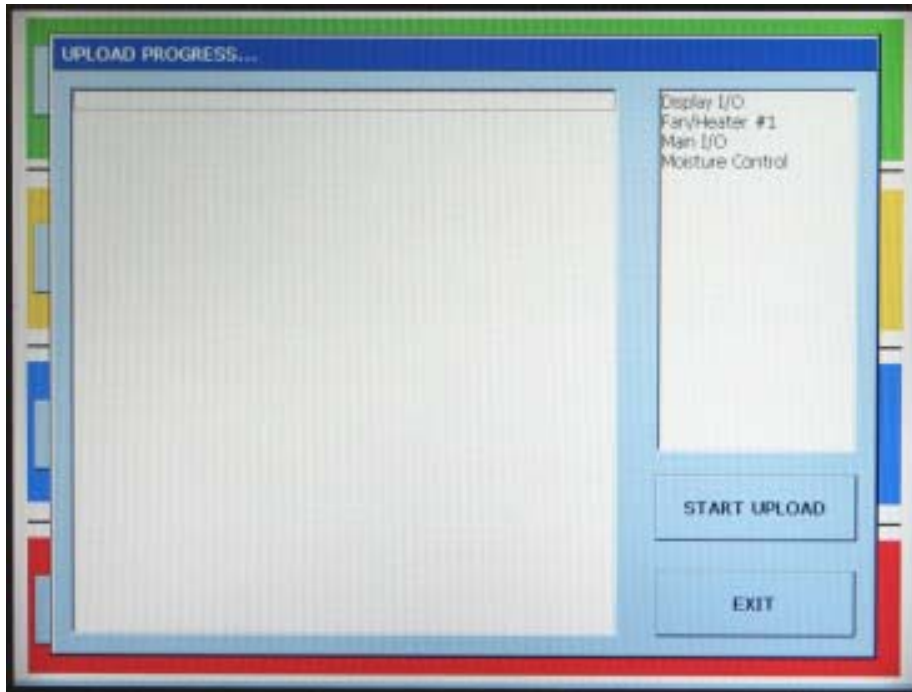
10.) Select the program file you want to upload by touching the **Move Up** and **Move Down** buttons until the desired program file is highlighted. Touch the **Accept / Exit** button.

Fig. 10: Start upload



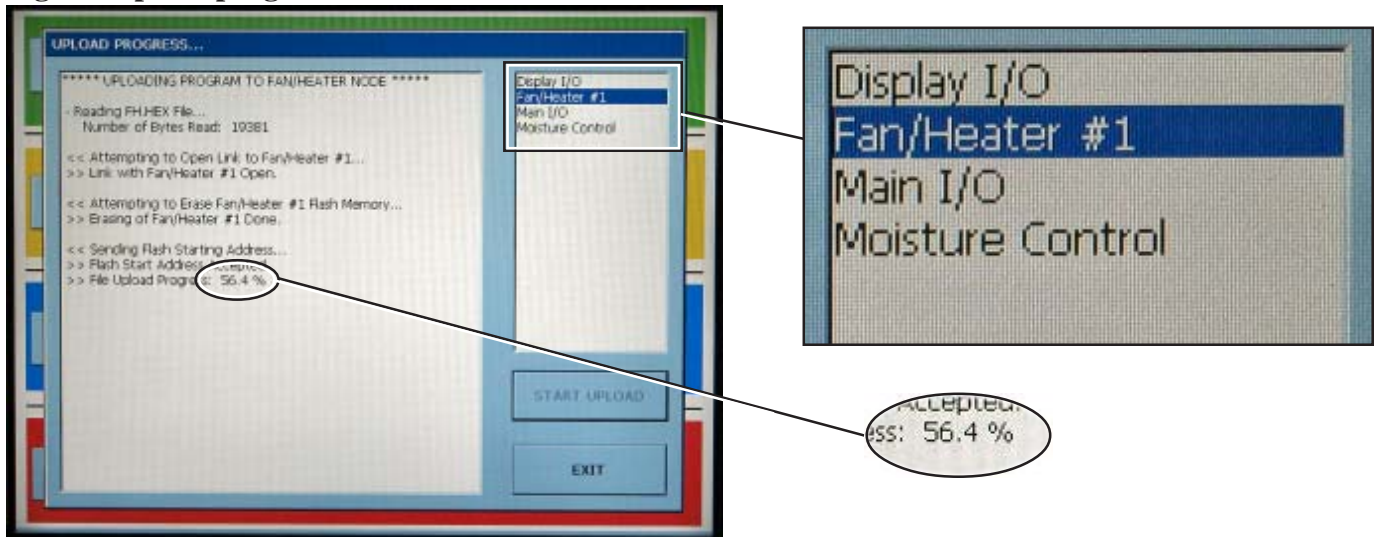
11.) Touch the **Start Upload** button.

Fig. 11: Start upload



12.) When the Upload Progress screen appears touch the **Start Upload** button.

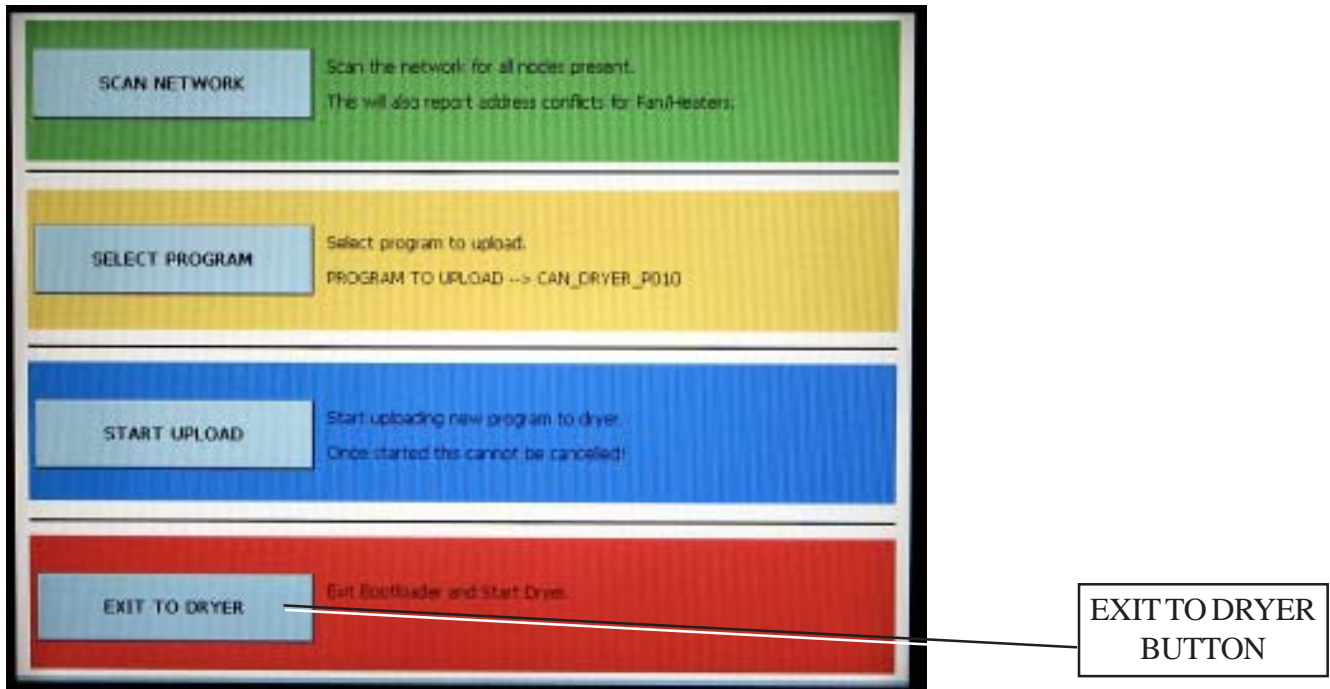
Fig. 12: Upload progress



13.) The computer will now begin programming each of the network circuit boards on the dryer. The box on the right of the screens lists the network circuit boards detected in the scan. Each circuit board listed will have to be reprogrammed, so this may take a few minutes. File upload progress for circuit board that is highlighted is displayed in the box on the left (see figure 12).

When this step is complete the boot loader screen will reappear.

Fig. 13: Exit to dryer



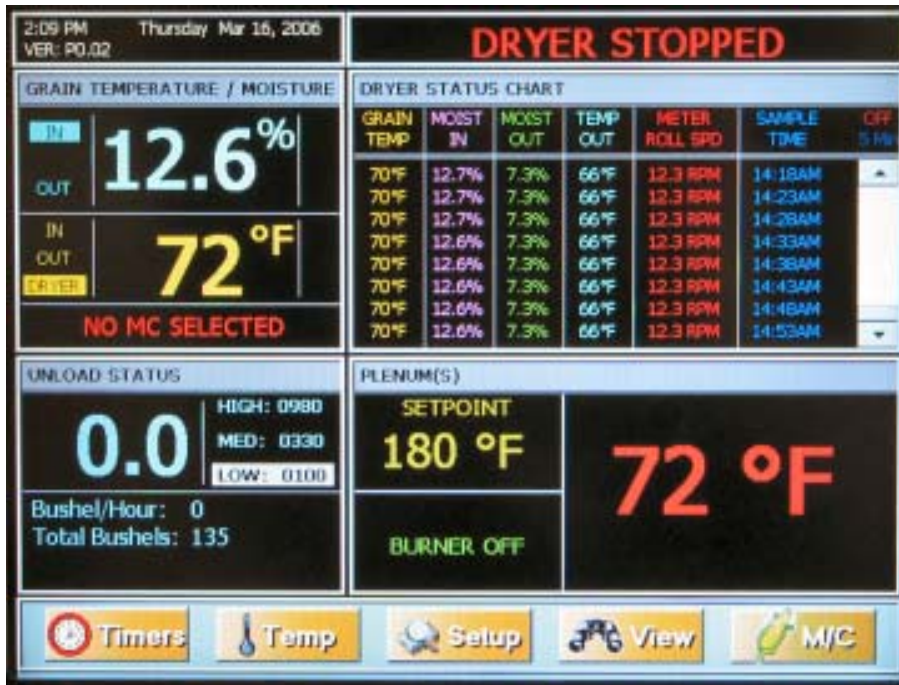
14.) The program upload procedure was successful. Touch the **Exit To Dryer** button to exit boot loader and start the dryer.

Fig. 13: Starting dryer



15.) The dryer will begin running the program that was just installed.

Fig. 14: Program upload complete



16.) The dryer control is now ready to operate the dryer.

This Equipment shall be installed in accordance with the current installation codes and applicable regulations which should be carefully followed in all cases. Authorities having jurisdiction should be consulted before installation occurs.



The GSI Group, Inc.
1004 E. Illinois St.
Assumption, IL 62510-0020
Phone: 217-226-4421
Fax: 217-226-4420
e-mail: gsisales@grainsystems.com
internet: <http://www.grainsystems.com>