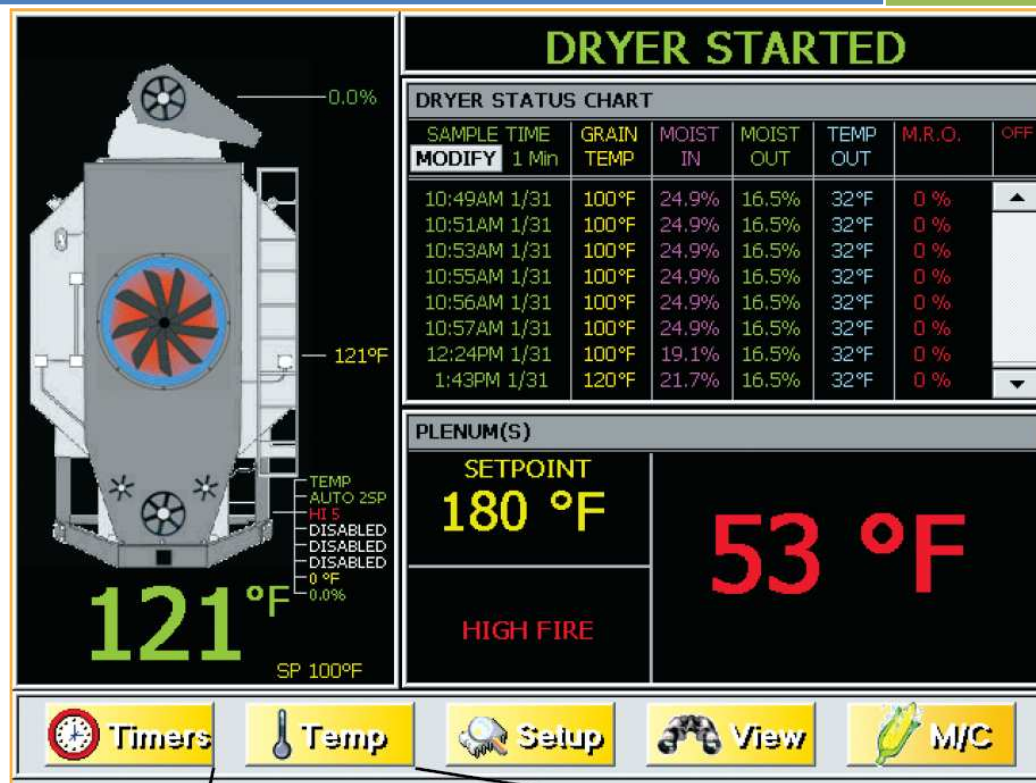


2009

Vision Dryer V1.01 Changes



Steve Logue

The GSI Group

10/13/2009

Contents

- 1. Introduction 3
- 2. Changes / Additions..... 3
 - 2.1 Plenum Temperature Manager 3
 - 2.2 User Safety Input 4
 - 2.3 New Features Information Screen 5
 - 2.4 Five Speed Temperature M/C Auto Centering 5

1. Introduction

This document describes the changes and feature additions applied to version V1.01 of the Vision Portable Dryer Software. This document is to be used as a supplement to the Vision Operation Manual.

2. Changes / Additions

This section describes all the relevant changes and software additions.

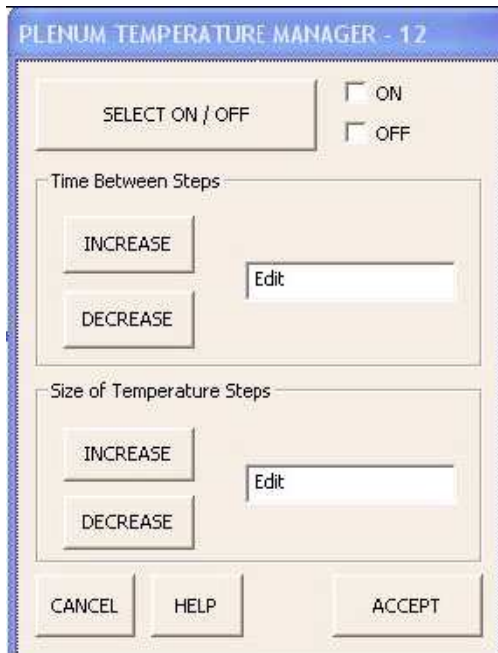
2.1 Plenum Temperature Manager

In previous versions of Vision Software The Plenum Temperature Manager, as it has been called, would “back-off” the plenum temperature on a single fan/heater dryer if the unload rate was adjusted by one of the automatic moisture controls to be larger than the maximum allowed unload rate. This feature has now been extended to all dryer sizes.

The following rules will be honored by The Plenum Temperature Manager.

- On a multi fan/heater dryer the plenum temperature of the upper fan/heater shall not be adjusted by The Plenum Temperature Manager.
- If the unload rate of dryer exceeds the user entered maximum unload rate the plenum temperature setpoints shall be reduced by the amount chosen by the customer at every time interval also chosen by the customer. See Figure 1 for Plenum Temperature Manager setup screen.
- Once the plenum temperature setpoints have been reduce, if the unload rate drops back below the maximum unload rate, the plenum setpoints shall be increased, but not beyond their original setpoint values.
- No plenum temperature setpoint shall be reduced below 150 F regardless of the unload rate.

Figure 1 Plenum Temperature Manager Setup Screen



2.2 User Safety Input

The user safety input #1 on the Main IO board is now active. What this means is that once V1.01 has been loaded into the dryer a User Safety Shutdown warning will be issued as long as terminal J2-02 is lacking 12VDC. In other words, if you update your programming to V1.01 you need to place a jumper between J2-01 and J2-02 on the Main IO board. See Figure 2.

Figure 2 User Safety Input Pin



2.3 New Features Information Screen

Version V1.01 added a new information screen that gives some detail on feature additions added to the current version of software. This screen can be accessed by pressing the View button and then the Software Version Info button.

2.4 Five Speed Temperature M/C Auto Centering

This version of software allows the user to select auto centering for 5-speed temperature based moisture control. If the user selects auto centering for 5-speed temperature, then every hour the center speed will be adjusted based upon what the average unload rate has been for that previous hour. For example, if the center speed is set for 50% and the dryer has averaged 45% for its unload rate over the last hour, then the auto centering will adjust the center speed down to approximately 45%.