



Programming Baldor H2 and VS Drives on Dryers Built 1993 and Prior or 1998 and UP

For the purpose of making Baldor AC drives work with Zimmerman control panels some parameter settings must be changed. Some parameters remain unchanged. When programming AC drive you must change only parameters shown in chart [on Page 2](#) and skip those not shown.

Setting Procedure

1. Power up drive.
2. Press MENU key to display programming options.
3. Scroll, with up and down arrow keys, to programming and press ENTER key.
4. Scroll through top level programming menu using up and down arrow keys until setting to be changed, determined by chart [on Page 2](#), is reached.
5. Press ENTER key to program top level parameters. (Example: Level 1 blocks.)
6. Scroll through 1st level parameter group, using up and down arrow keys, finding the parameters to be modified according to chart [on Page 2](#).
7. Press ENTER at selected 1st level parameters to get to individual parameters.
8. Scroll through individual parameters, using up and down arrow keys, finding the parameters to be modified according to chart [on Page 2](#).
9. Modify factory settings of the individual parameters shown in the chart [on Page 2](#). To do so:
 - a. Press ENTER key to begin value change.
 - b. If number, use left and/or right arrow keys to place the blinking cursor over the digit(s) to be modified.
 - c. Use up and down arrow keys to change value.
 - d. Press ENTER to save change.
10. When done scroll to next parameter to be changed (refer to chart [on Page 2](#)) by using up and down arrow keys. Press R to return to the previous screen or S to return to status screen.
11. Repeat process until all parameters shown on chart [on Page 2](#) are programmed.
12. To end programming press R repeatedly until reaching main menu then press Enter at status. This will bring you back to monitoring at main screen.



Programming Baldor H2 and VS Drives on Dryers Built 1993 and Prior or 1998 and UP (Continued)

All parameters and their settings to be changed for Zimmerman purposes shown in chart *below*.

Top Level Programming Menu	1 st Level Parameter Group	Individual Parameters	Settings
			Zimmerman Changes
Level 1 Blocks	Ramp Rates	Accel Time #1	3 Seconds
		Decel Time #1	3 Seconds
Level 1 Blocks	Keypad Setup	Stop Key	OFF
		Stop Mode	Coast
		Run Forward	OFF
		Run Reverse	OFF
Level 1 Blocks	Input Setup	Operating Mode	Standard Run 3 Wire
		Command Source	Analog In1
		Analog In1 Type	Potentiometer
Level 1 Blocks	Output Setup	Analog Out 1 Type	0-5V
Level 2 Blocks	Drive Limits	Minimum Output Speed	7 Hertz
		Maximum Output Speed	75 Hertz
Level 2 Blocks	Drive Protect	External Trip	ON
Level 2 Blocks	Motor Data	Motor Rated Amps	Factory/5 Amps or 6 Amps*
	Press R to Exit	Press R to Exit	Press R to Exit
Press ENTER at Status			

NOTE: After programming is complete if local is displayed in upper right hand corner of status screen. Then Local/Remote button will have to be pressed to change to remote. This is a one time operation and will not have to be done in the future.

* **NOTE:** *Accutrol Unload Dryers Only* - 5 amps is selected for 17' diameter dryers, 6 amps for 23'-4" diameter dryers. Dryers with metering augers stay at factory setting.

Programming Baldor H2 and VS Drives on Dryers Built 1994-1997

For the purpose of making Baldor AC drives work with Zimmerman control panels some parameter settings must be changed. Some parameters remain unchanged. When programming AC drive you must change only parameters shown in chart [on Page 4](#) and skip those not shown.

Setting Procedure

1. Power up drive.
2. Press MENU key to display programming options.
3. Scroll, with up and down arrow keys, to programming and press ENTER key.
4. Scroll through top level programming menu using up and down arrow keys until setting to be changed, determined by chart [on Page 4](#), is reached.
5. Press ENTER key to program top level parameters. (Example: Level 1 blocks.)
6. Scroll through 1st level parameter group, using up and down arrow keys, finding the parameters to be modified according to chart [on Page 4](#).
7. Press ENTER at selected 1st level parameters to get to individual parameters.
8. Scroll through individual parameters, using up and down arrow keys, finding the parameters to be modified according to chart [on Page 4](#).
9. Modify factory settings of the individual parameters shown in the chart [on Page 4](#). To do so:
 - a. Press ENTER key to begin value change.
 - b. If number, use left and/or right arrow keys to place the blinking cursor over the digit(s) to be modified.
 - c. Use up and down arrow keys to change value.
 - d. Press ENTER to save change.
10. When done scroll to next parameter to be changed (refer to chart [on Page 4](#)) by using up and down arrow keys. Press R to return to the previous screen or S to return to status screen.
11. Repeat process until all parameters shown on chart [on Page 4](#) are programmed.
12. To end programming press R repeatedly until reaching main menu then press Enter at status. This will bring you back to monitoring at main screen.

Programming Baldor H2 and VS Drives on Dryers Built 1994-1997 (Continued)

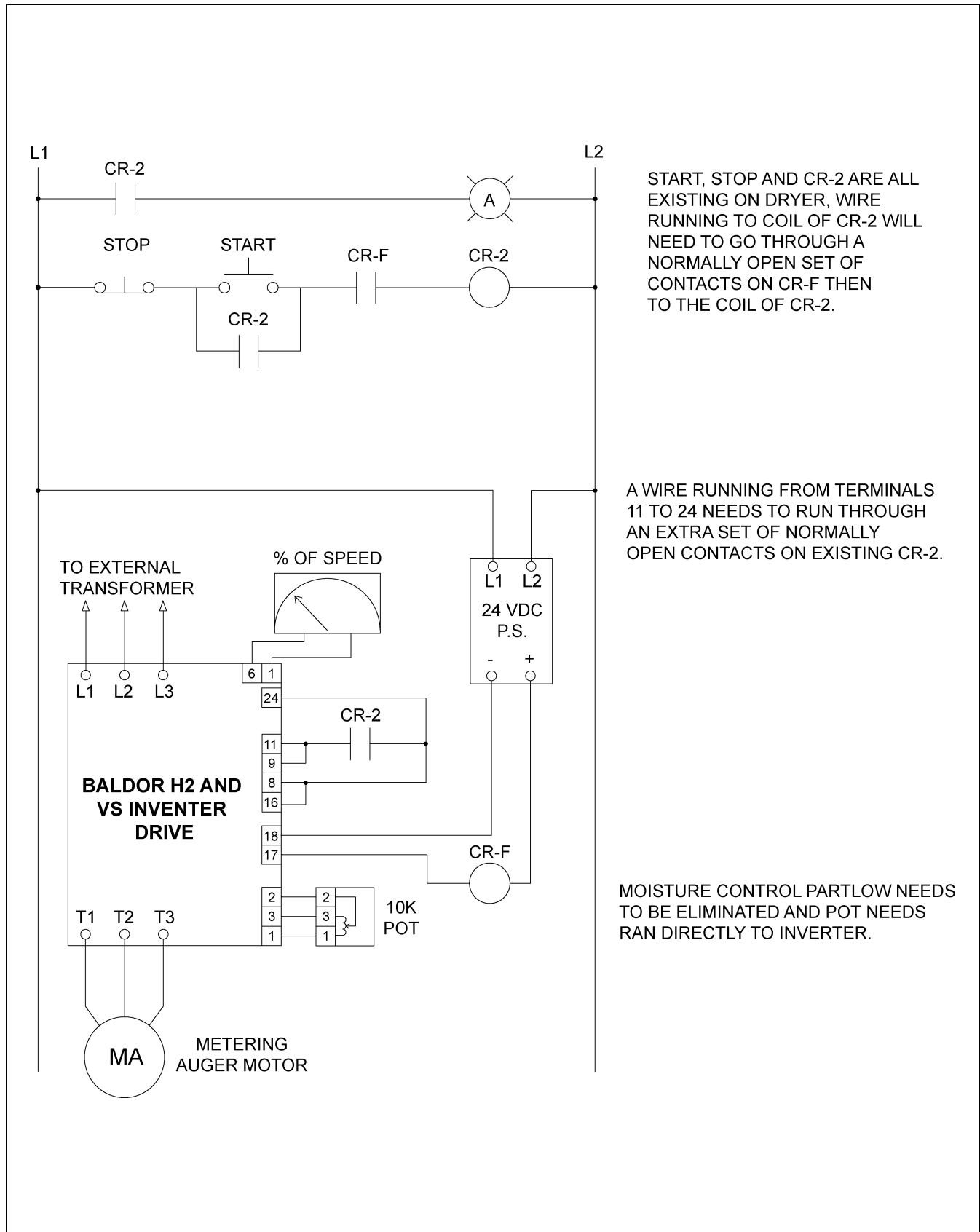
All parameters and their settings to be changed for Zimmerman purposes shown in chart *below*.

Top Level Programming Menu	1 st Level Parameter Group	Individual Parameters	Settings
			Zimmerman Changes
Level 1 Blocks	Ramp Rates	Accel Time #1	3 Seconds
		Decel Time #1	3 Seconds
Level 1 Blocks	Keypad Setup	Stop Key	OFF
		Stop Mode	Coast
		Run Forward	OFF
		Run Reverse	OFF
Level 1 Blocks	Input Setup	Operating Mode	Standard Run 3 Wire
		Command Source	Analog In2
		Analog In2 Type	0-5V
Level 1 Blocks	Output Setup	Analog Out 1 Type	0-5V
Level 2 Blocks	Drive Limits	Minimum Output Speed	7 Hertz
		Maximum Output Speed	75 Hertz
Level 2 Blocks	Drive Protect	External Trip	ON
Level 2 Blocks	Motor Data	Motor Rated Amps	Factory/5 Amps or 6 Amps*
	Press R to Exit	Press R to Exit	Press R to Exit
Press ENTER at Status			

NOTE: After programming is complete if local is displayed in upper right hand corner of status screen. Then Local/Remote button will have to be pressed to change to remote. This is a one time operation and will not have to be done in the future.

* **NOTE:** Accutrol Unload Dryers Only - 5 amps is selected for 17' diameter dryers, 6 amps for 23'-4" diameter dryers. Dryers with metering augers stay at factory setting.

Baldor H2 and VS Inverter Wiring 1993 and Prior



START, STOP AND CR-2 ARE ALL EXISTING ON DRYER, WIRE RUNNING TO COIL OF CR-2 WILL NEED TO GO THROUGH A NORMALLY OPEN SET OF CONTACTS ON CR-F THEN TO THE COIL OF CR-2.

A WIRE RUNNING FROM TERMINALS 11 TO 24 NEEDS TO RUN THROUGH AN EXTRA SET OF NORMALLY OPEN CONTACTS ON EXISTING CR-2.

MOISTURE CONTROL PARTLOW NEEDS TO BE ELIMINATED AND POT NEEDS RAN DIRECTLY TO INVERTER.

Figure 1

Baldor H2 and VS 1994 and 1995 Panel PLC

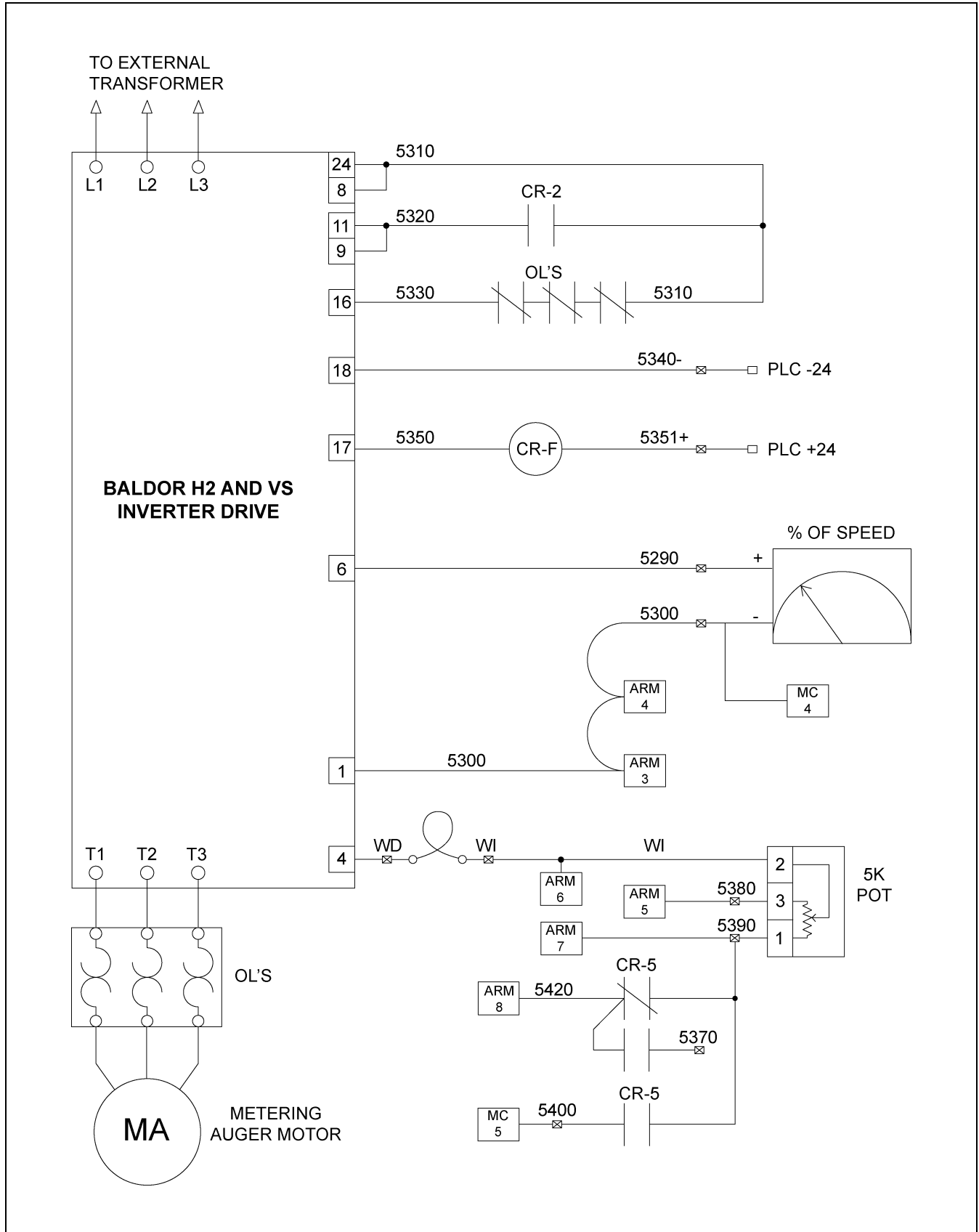


Figure 2

Baldor H2 and VS 1994 and 1995 Panel Relay

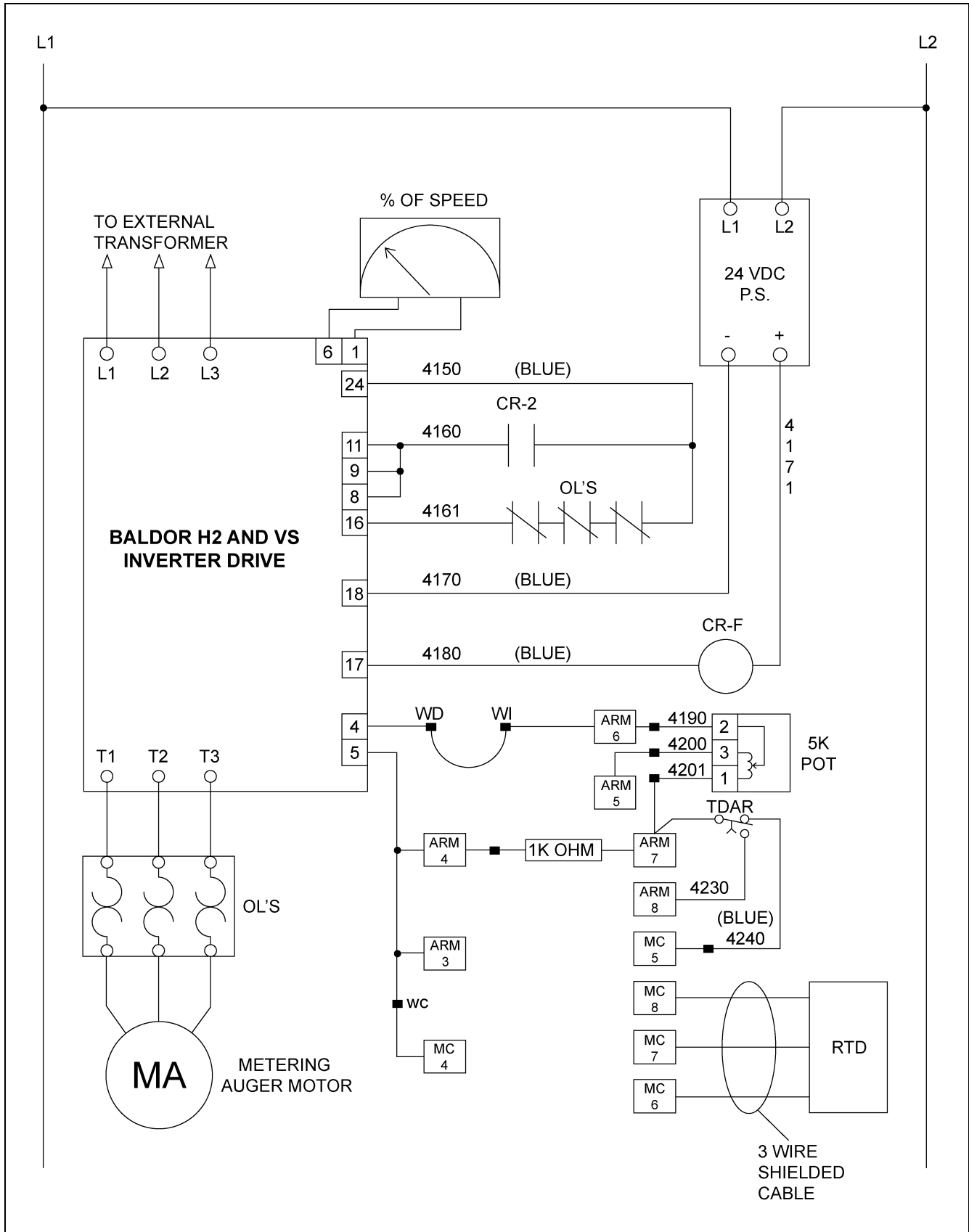


Figure 3

Baldor H2 and VS 1996 Panel PLC

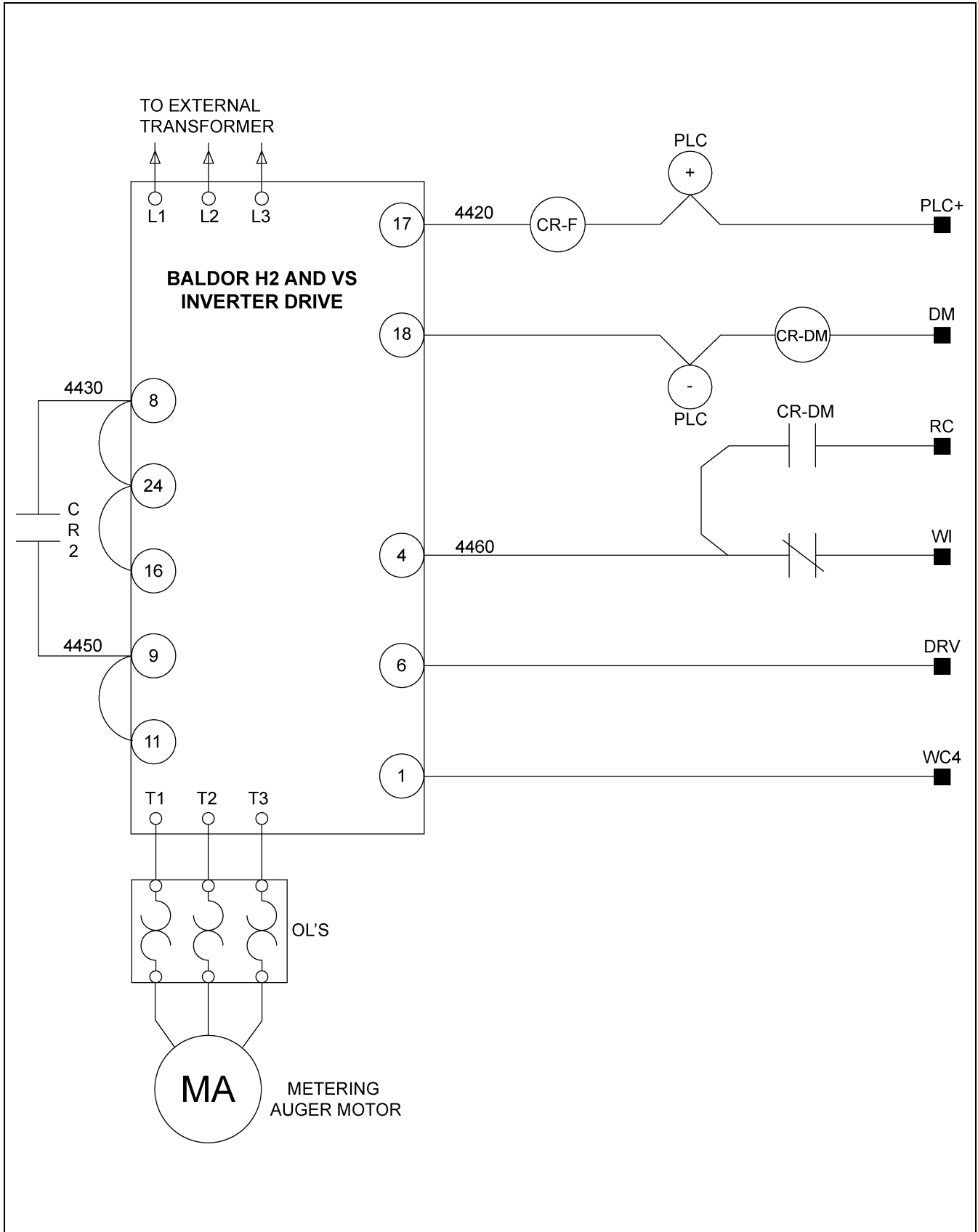


Figure 4

Baldor H2 and VS 1997 Panel PLC

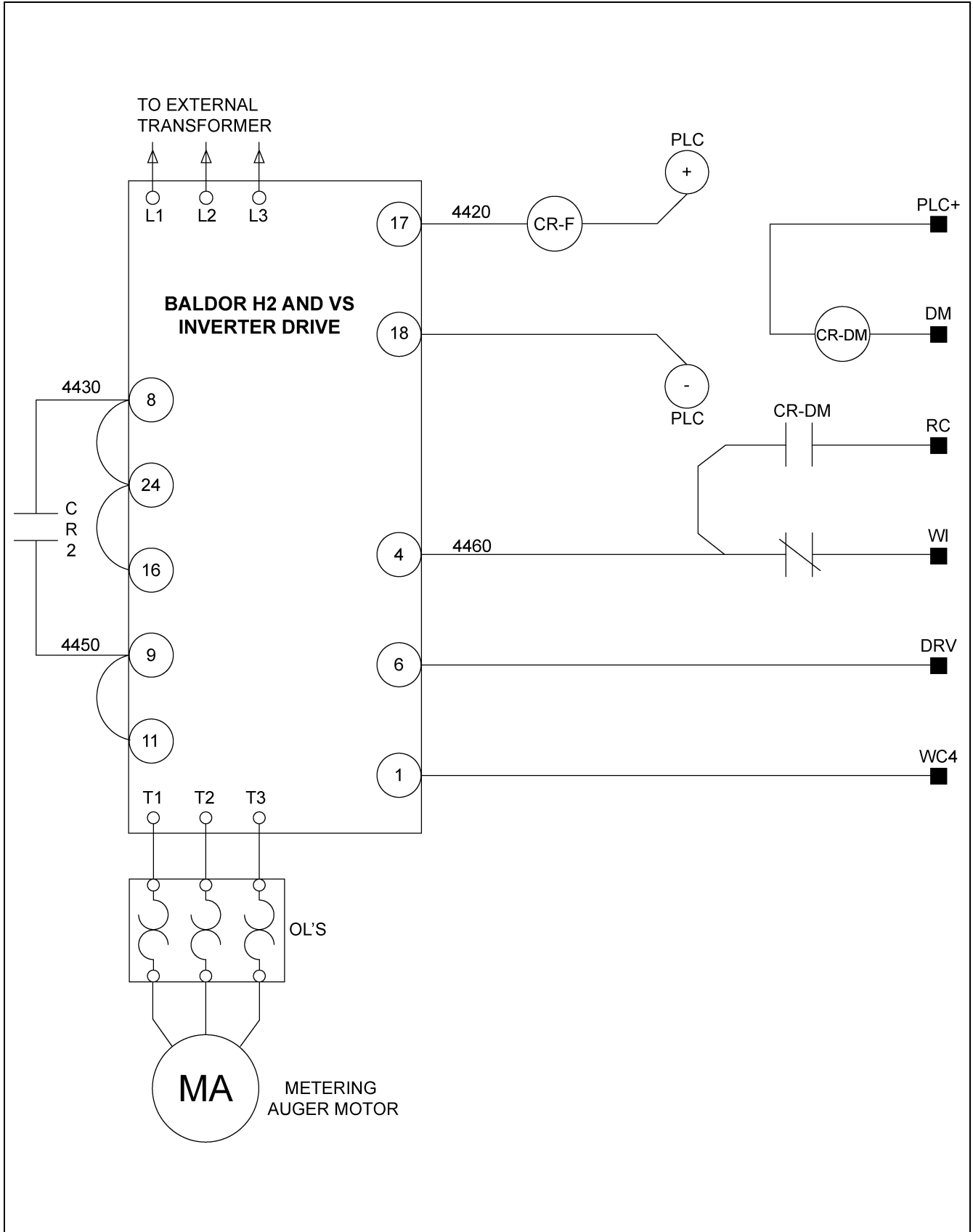


Figure 5