

FOLD-UP WET BIN FIELD ASSEMBLY

WBF-01-2

For CF/AB, CF/SA, C-2100A, C-2100B, H, M, and J Series Grain Dryers

This service bulletin replaces the following bulletins: WB-02-2, M/WB-01-2, CF/WB-01-2, and C/WB-01-2.

The following instructions, if followed in the sequence given, will simplify field erection of the wet bin.

STEP 1 - Open package to make sure all parts have been shipped. See parts package list.

STEP 2 - Remove the wet bin side shipping brackets.

STEP 3 - Lift the hinged wet bin housing assembly into its upright position.

NOTE: During the initial stages of setup, make sure all four corners pickup uniformly. Free the corners by hand assist or prying, if required.

CF/AB-190 MODELS ONLY - These models are not equipped with a built-in lift mechanism. For these dryers, use the two lifting brackets (#15) and attach them at the center point of the top auger housing assembly as shown by detail "B" in illustration. Remove and discard the existing 1/4" screws from center of top auger cover. Use the heavier 5/16 x 1" self-tap screws provided within hardware kit to connect the lifting brackets. Lift the auger housing assembly into the upright position using a crane or boom truck. Block or otherwise SAFELY secure the lifting device!

With the aid of an assistant, **rotate the turnbuckles uniformly** to cause the auger housing assembly to setup into its proper position. See detail "A" in illustration.

STEP 4 - The following parts, details #10, 11 and L are attached with bolts that install from inside the wet bin. These parts **MUST** be installed prior to folding up the wet bin sides.

NOTE: Secure item #L to front end of wet bin with 3/8 x 6-1/2" carriage bolt, washer, nut and tighten securely. To add belt guard later, sandwich the guard between two additional washers and add the second nut.

STEP 5 - Fold up the left-hand wet bin side sections (#14) and install the remaining loose side section located adjacent to the motor.

NOTE: All side sections are shipped attached together with two bolts. These bolts should be loose enough to permit some shifting of the parts. This small amount of shifting relieves any stress that might build up in the length of the dryer and permits easy installation of the self-tapping screws. Next, loosely install the remaining self-tapping screws. **DO NOT TIGHTEN AT THIS TIME.**

STEP 6 - Fold up the right-hand side sections of the wet bin and loosely install all self-tapping screws.

STEP 7 - Tighten all self-tapping screws and bolts. **USE CARE NOT TO OVER-TIGHTEN AND STRIP THE THREADS.**

STEP 8 - Loosen the motor from its shipping position, and arrange the turnbuckle as shown in illustration.

STEP 9 - Install sheaves (#3 & #6) on auger and motor. Install drive belts (#5), then carefully shift sheaves as required to provide proper belt alignment. Secure sheaves (with keys) in position. Adjust belt tension and secure with locknut on turnbuckle.

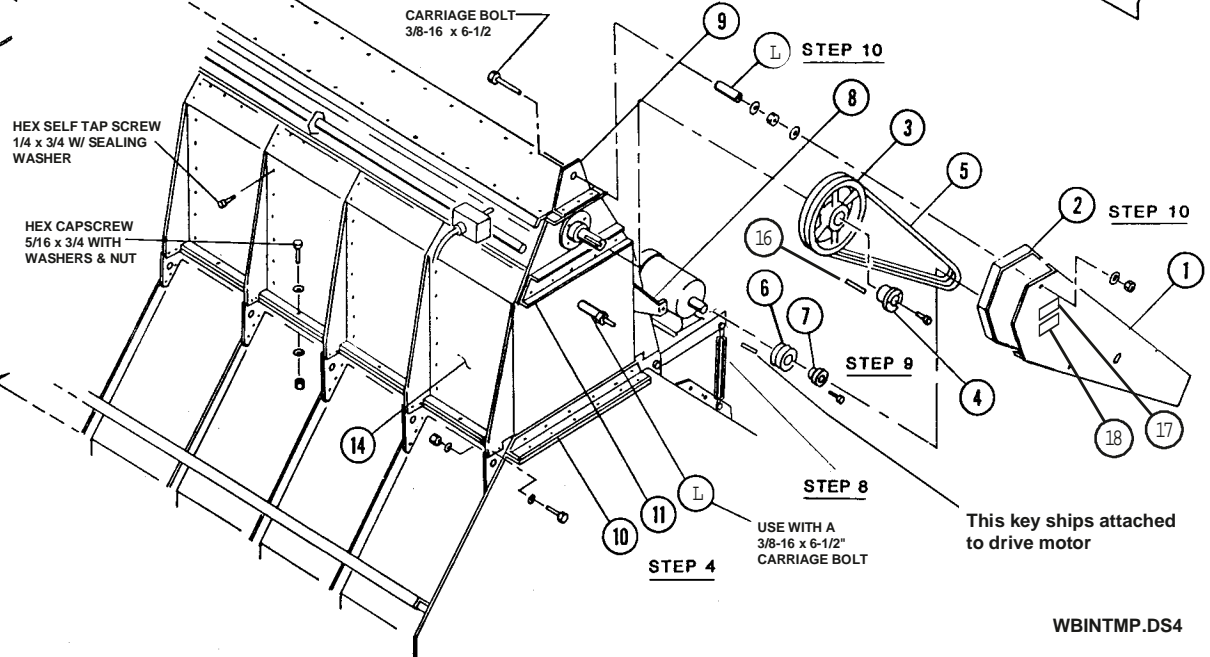
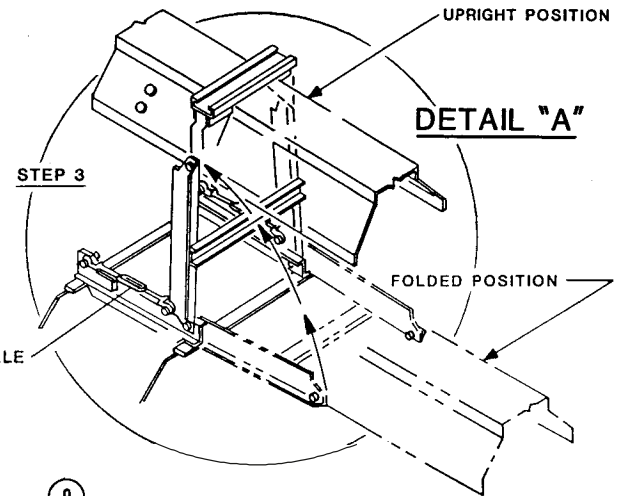
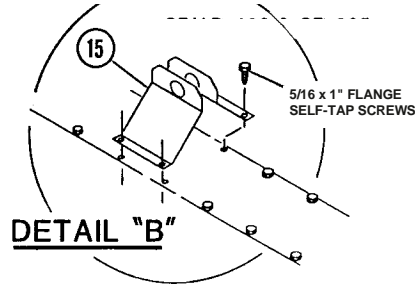
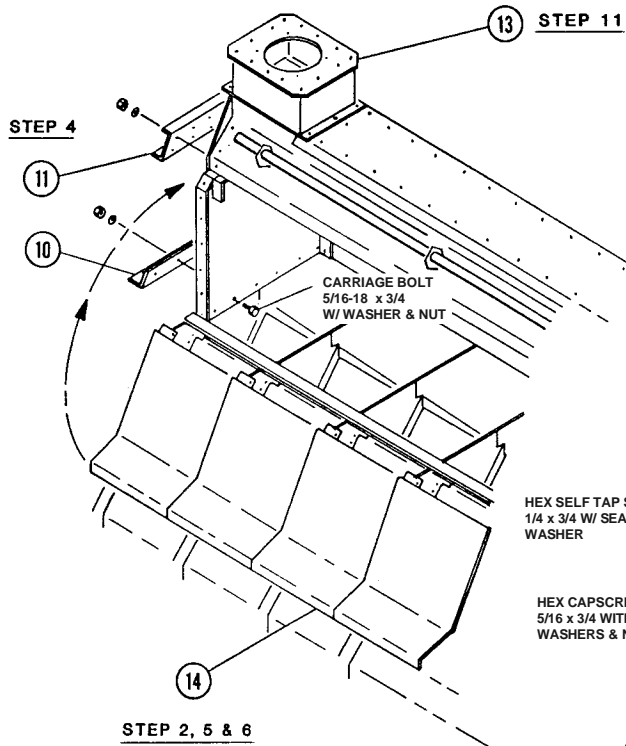
STEP 10 - Attach the belt guard brackets (#8 and 9) in position as shown. Attach belt guard (#1 & #2). See note in step No. 4.

STEP 11 - Attach the fill hopper assembly (#13, shipped inside the dryer plenum) as shown.

STEP 12 - Carefully inspect to make certain all parts are properly installed and tightened.

LIFTING BRACKET - USED IN LIEU OF TURNBUCKLE LIFT ASSEMBLY FOR CF/AB-190 MODELS ONLY

TURNBUCKLE LIFT ASSEMBLY - USED FOR CF/AB-270 and LARGER MODELS



SEE 4C-0149.DWG WET BIN PARTS PACKAGE DRAWING and 3C-0703.DWG TOP AUGER DRIVE DRAWING FOR MORE INFORMATION.

