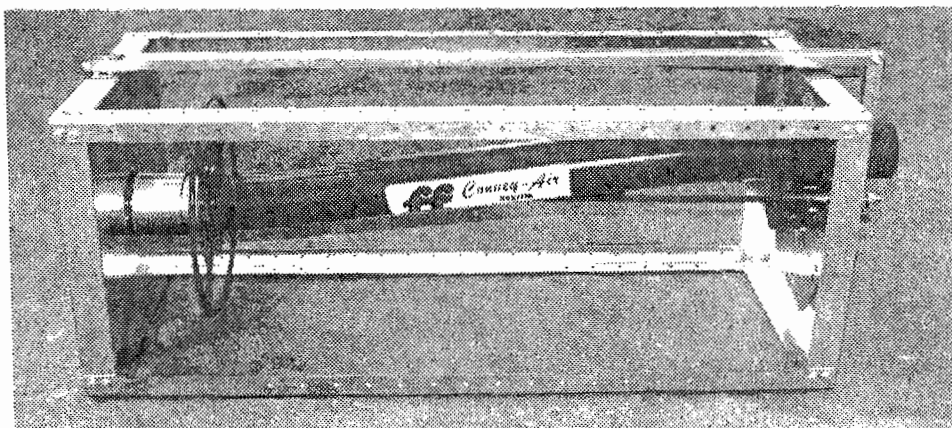


# CA-SELECT

## INSTALLATION & OPERATION



The CA-Select is a Convey-Air accessory that enables a single operator to easily route the discharge grain to different locations. The CA-Select uses an offset tube that rotates about the center of an input tube. The output end of the offset tube can be connected to one of six possible output tubes. Two output tubes come standard. Additional ones may be ordered with the following part numbers:

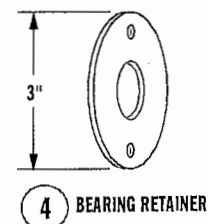
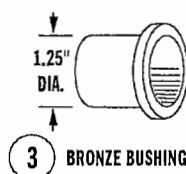
DESCRIPTION	PART NO.
4" Output Tube	CA-SELECT-T-4
5" Output Tube	CA-SELECT-T-5

The CA-Select can be mounted vertically or horizontally and is designed to replace the flexible hose / cam-lock coupling means of changing the destination of grain. See fig. 9 for dimensions.

An optional tube spacer bracket is available for maintaining the circular orientation of the selectable discharge piping. See figure 8 for parts diagram.

### ASSEMBLY

1. Assemble bases (items 1 and 2) to the four frame legs (item 5) using 3/8 x 1" hex-flange whiz-lock bolts and nuts (hardware items A and B). Ensure bases are square to legs before tightening. See fig. 1.
2. Install input tube weldment (item 7) from outside frame using 1/4 x 1" hex-flange whiz-lock bolts and nuts (hardware items C and D). Install bolts from inside frame. See fig. 1.
3. Install bushing (item 3) into output base (item 2) and retain with bearing retainer (item 4) and hardware items C and D. See figs. 2 and 3.

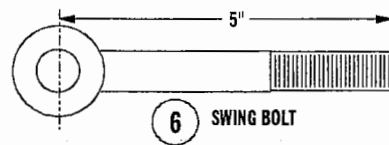


## FARM FANS

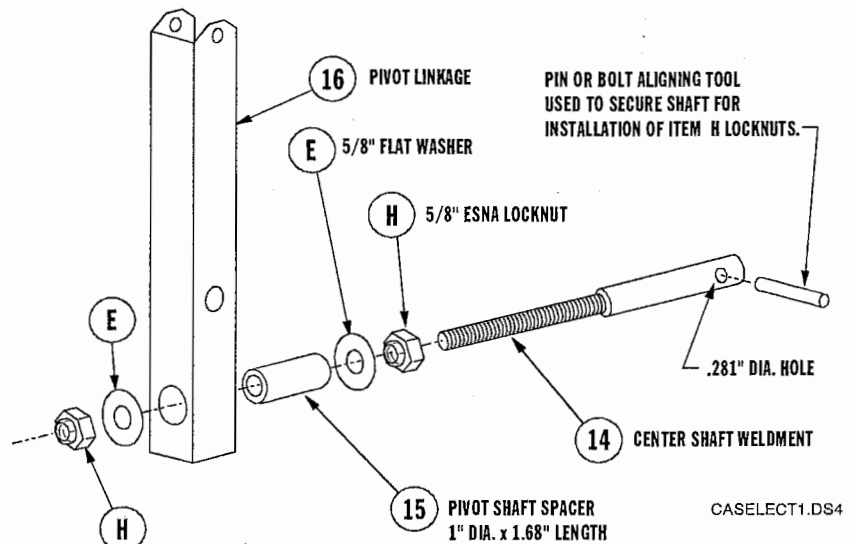
Division of ffi Corporation  
5900 Elmwood Ave. • Indianapolis, IN 46203  
©1996 ffi Corporation Printed in U.S.A.

4. Install stiffener (item 9) to output base using 1/4 x 1" hex-flange whiz-lock bolts and nuts (hardware items C and D) in two holes on each end of stiffener (remaining bolts to be installed in step 9).

5. Install threaded swing bolt (item 6) through stiffener and output base, locking in place with 5/8" flat washer (item F) and 5/8" hex nut (item G). Ensure that the swing bolt through-hole is oriented to serve as a pivot point for linkage. See figs. 3 and 6.  
**(NOTE: Item F 5/8" washer has a smaller O.D. than the item E 5/8" washer.)**



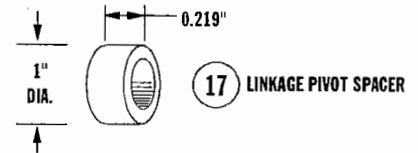
6. Assemble pivot linkage assembly by running a 5/8" locknut (item H) approximately half way down center shaft weldment (item 14). In order to secure the center shaft for installation of (2) locknuts, clamp a drift pin or similar object in a vise vertically and position center shaft onto drift pin using the .281" dia. hole.  
**Note: Do not clamp the center shaft in a vise, as this may damage the shaft.** Install the following parts onto center shaft in the following order: flat washer (item E), pivot shaft spacer (item 15), pivot linkage (item 16), flat washer (item E), and locknut (item H). See illustration at right and fig. 6.



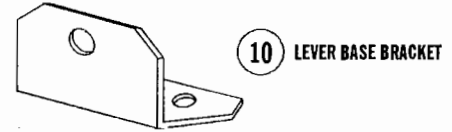
**PIVOT LINKAGE ASSEMBLY**

7. Install handwheel (item 19) to offset tube weldment (item 18) from short end of tube using 1/4 x 1" hex-flange whiz-lock bolts and nuts (hardware items C and D). See figs. 4 and 6.
8. Determine which output tube locations are to be used in output base. (Two output tubes come standard, additional ones are optional.) Assemble output tube parts as shown in fig. 7 from inside output base with bolts installed from inside the frame.
9. Install hardware items C and D into the six remaining holes that locate stiffener (item 9).
10. Assemble coupling (item 20) and coupling liner (item 21) to handwheel end of offset tube. Push coupling up to handwheel. See fig. 5.
11. Position offset tube/handwheel assembly into frame assembly. Slide coupling/liner onto input tube and tighten.
12. Push center shaft/pivot linkage assembly from step 6 into bushing (item 3) and onto offset tube pivot rod. Line up holes and install 1/4 x 1-1/2 hex-head cap screw and 1/4" ESNA locknuts (hardware items J and K).

- Assemble pivot linkage (item 16) to swing bolt (item 6) using spacer (item 17) and 5/8 x 2-1/4" hex-head cap screw (item M) and 5/8" ESNA locknut (item H). See fig. 6.

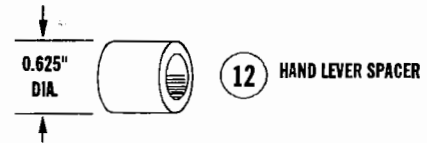


- Attach lever base brackets (item 10) to input base (item 1) using 3/8 x 1" hex-flange whiz-lock bolts and nuts (hardware items A and B).



- Assemble lever handle (item 11) to lever base brackets (item 10) with 3/8 x 1" hex-head cap screw and ESNA locknut (hardware items R and P).

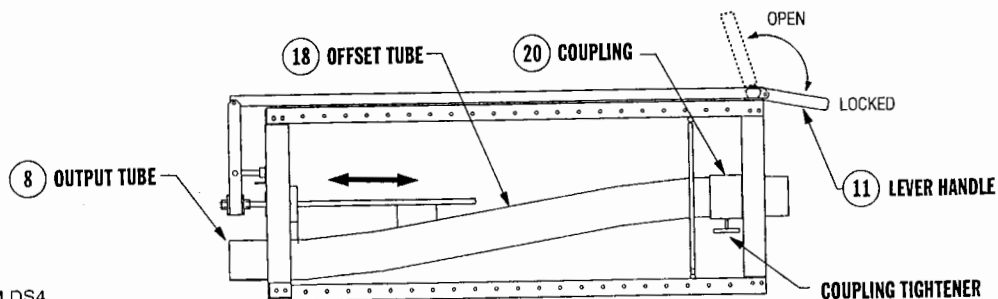
- Attach forked end of linkage (item 13) to lever handle (item 11) using hand-lever spacers (item 12) and 3/8 x 2-1/2" hex-head cap screw and ESNA locknut (hardware items N and P).

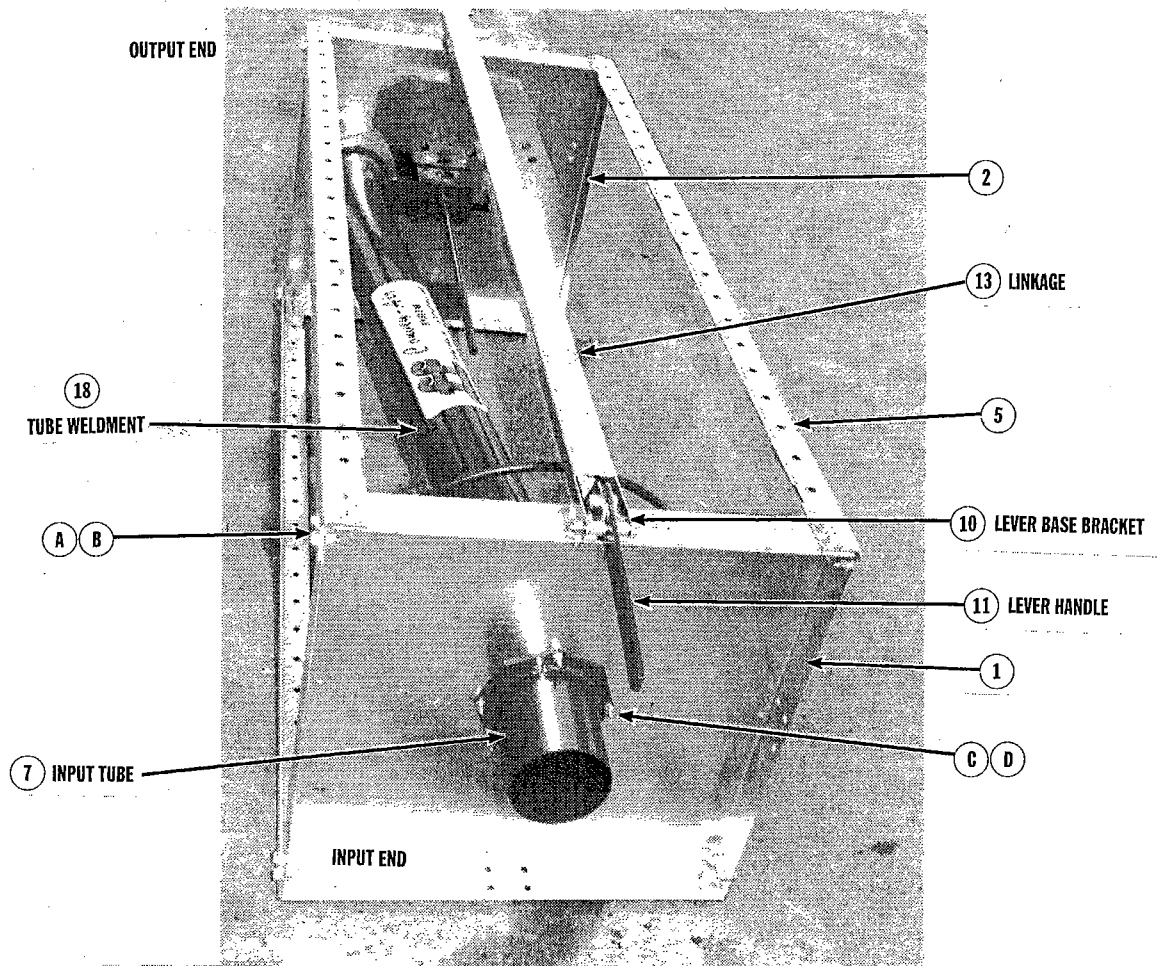


- Opposite end of linkage (item 13) is attached to pivot linkage (item 16) with 3/8 x 2-1/2" hex-head cap screw and ESNA locknut (hardware items N and P).
- Adjust center shaft/pivot linkage locknuts (item H) until offset tube has firm contact with output tube gasket. The amount of pressure required at gasket should be the result of a firm over-center movement of lever handle (item 11). Two-handed operation is excessive force.
- Position outlet cover (item 22) to offset tube assembly and fasten with 1/4 x 1/2" hex-flange self-tapping screws (item L).

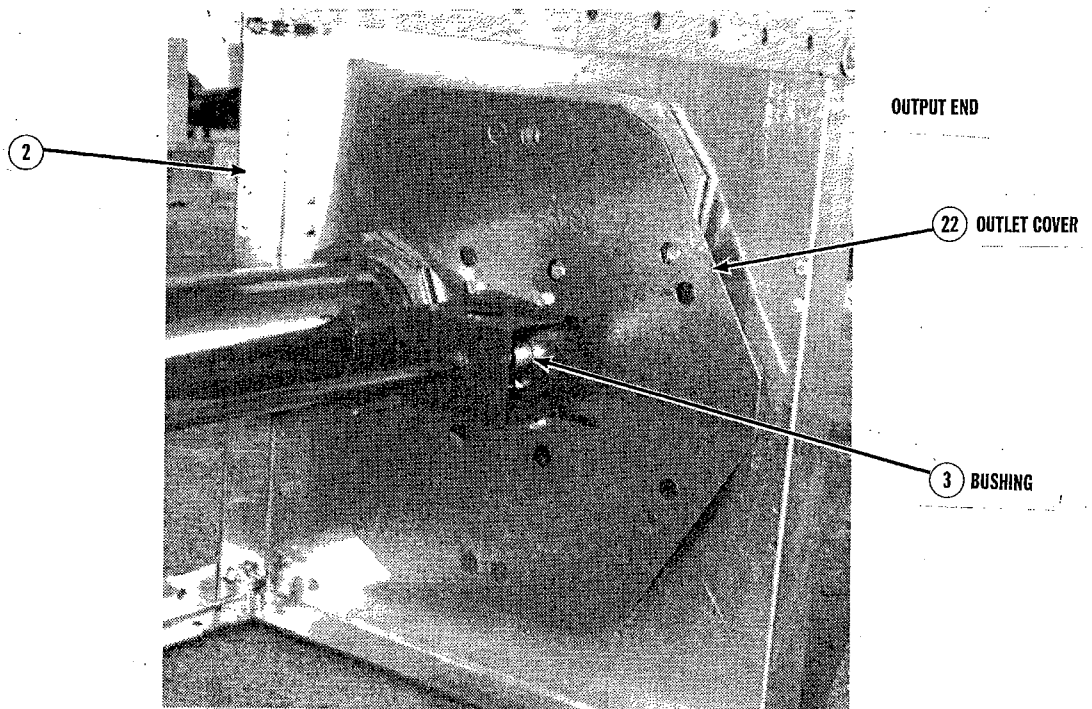
## OPERATION

- Turn off air supply and disconnect power. Ensure grain is not being transferred.
- Loosen coupling (item 20) only to the point where movement of the lever handle allows the offset tube (item 18) to slide freely in and out of the output tube (item 8). Do not over-loosen item 20 coupling. Ensure that the offset tube moves freely by way of the lever handle.
- With the lever handle in the open position, rotate offset tube to the desired output tube by using the hand-wheel. Lock the offset tube into place by swinging the lever handle into the locked position. Ensure lever handle has a positive over-center movement.

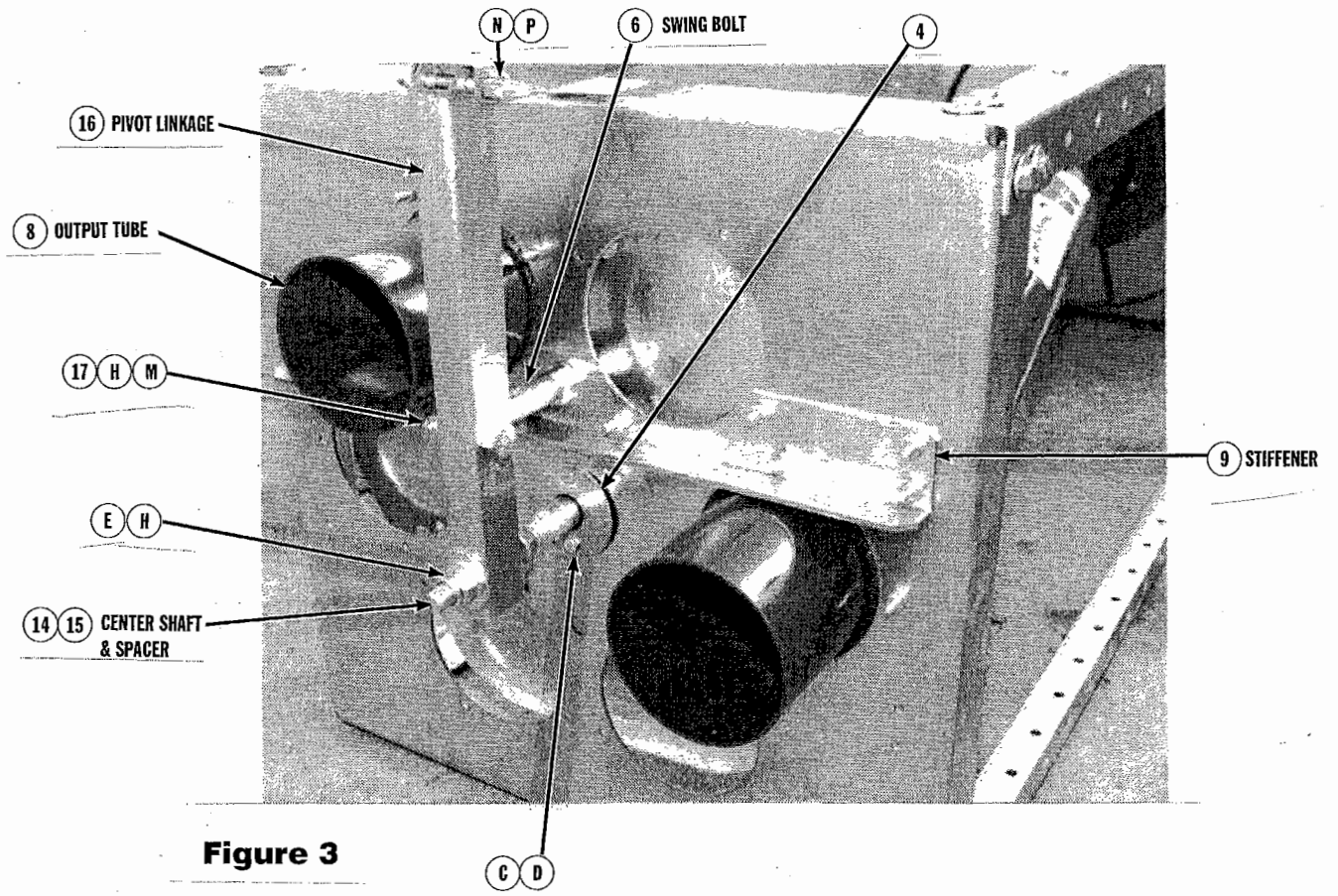




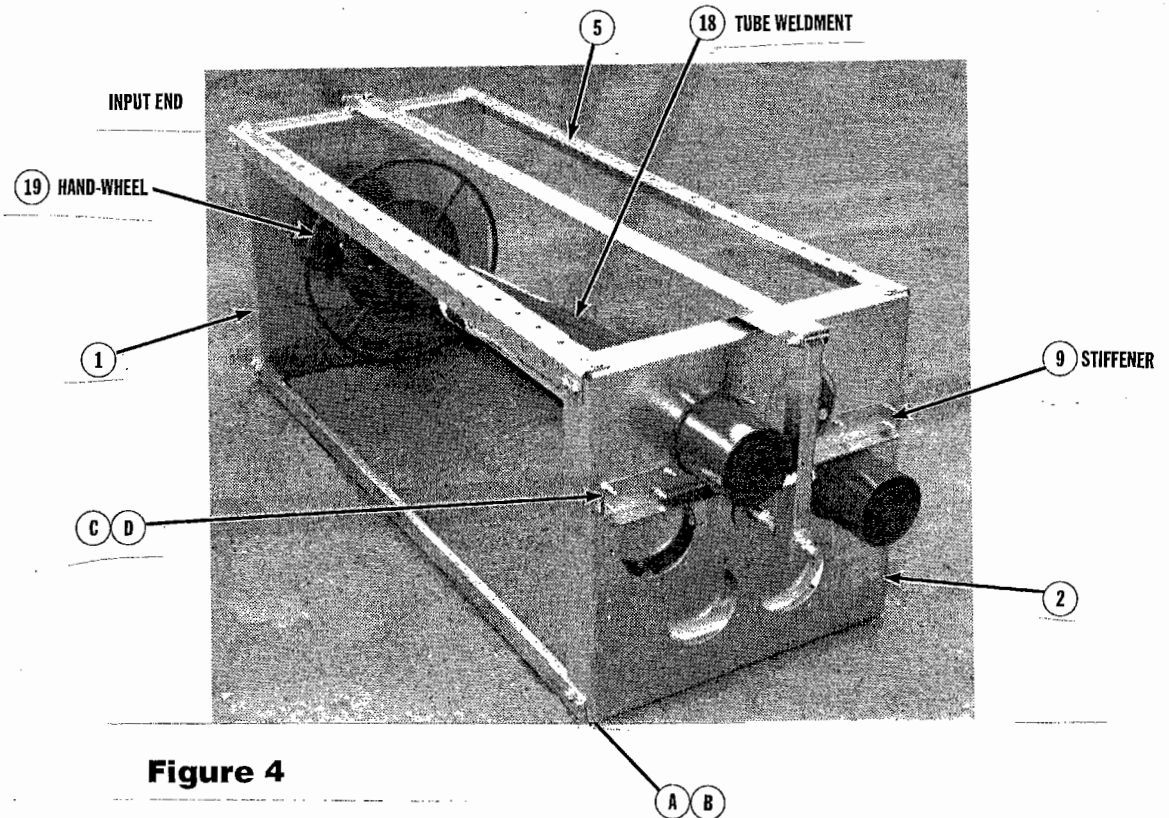
**Figure 1**



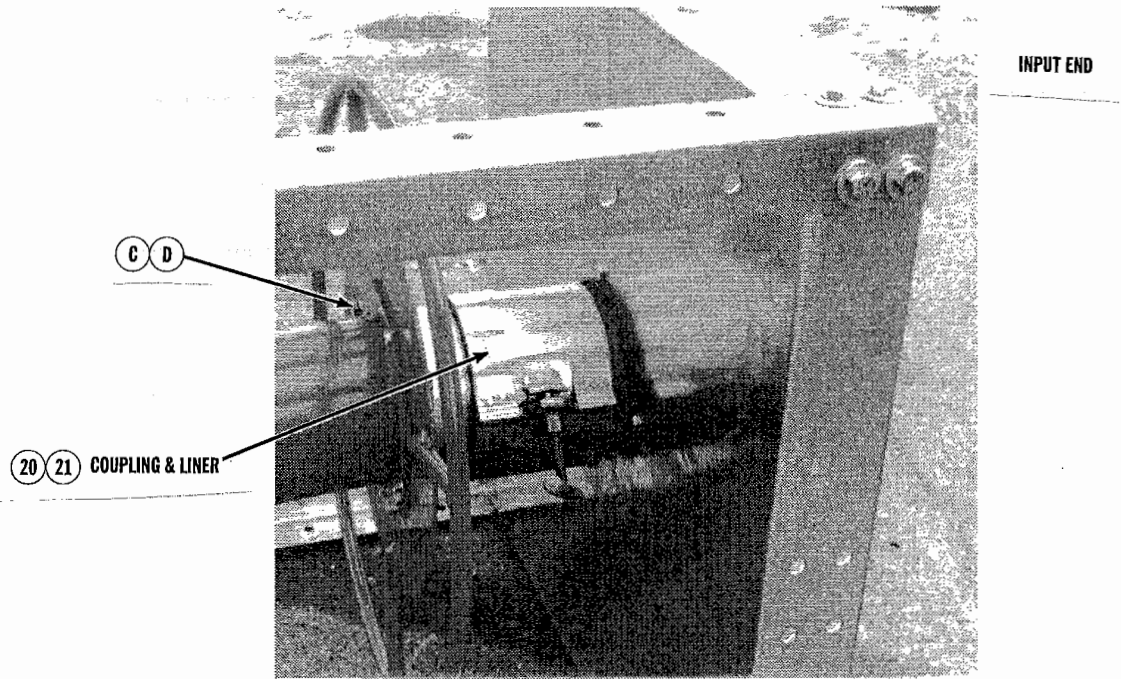
**Figure 2**



**Figure 3**



**Figure 4**



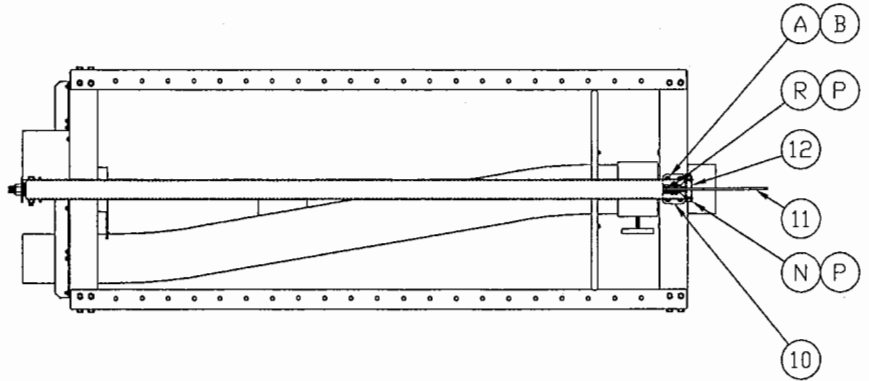
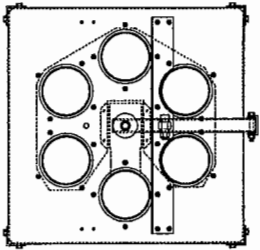
**Figure 5**



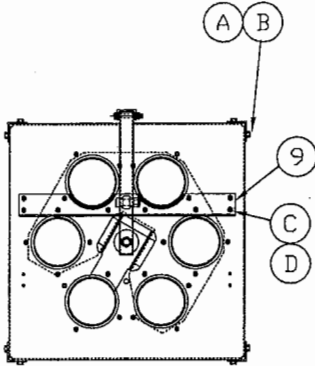
PART NO.		DESCRIPTION		ASSEMBLY	
CA-SELECT-4		CONVEY-AIR SELECTOR - 4'		X	
CA-SELECT-5		CONVEY-AIR SELECTOR - 5'		X	
				X	
				X	
ITEM	PART NO.	DWG. NO.	DESCRIPTION	QUANTITY	
1	401-4807-4	1C-1596	BASE, INPUT	1	1 - -
2	401-4806-6	1C-1595	BASE, OUTPUT	1	1 - -
3	406-2287-0	1A-0854	BUSHING	1	1 - -
4	401-4815-7	1A-0846	BEARING RETAINER	1	1 - -
5	401-4803-3	1B-2200	ANGLE, FRAME LEG	4	4 - -
6	406-2288-8	1A-0858	THREADED SWING BOLT-PLATED	1	1 - -
7	410-2009-0	2B-0313	4' INPUT TUBE WELDMENT	1	- - -
7	410-1991-0	2B-0313	5' INPUT TUBE WELDMENT	-	1 - -
8	CA-SELECT-T-4	3D-0398	OUTPUT TUBE PARTS-4'	2	- - -
8	CA-SELECT-T-5	3D-0398	OUTPUT TUBE PARTS-5'	-	2 - -
9	401-4888-4	1B-2295	STIFFENER	1	1 - -
10	401-4897-5	1A-0848	BRACKET, LEVER BASE	2	2 - -
11	406-2235-9	1B-2211	HANDLE, LEVER	1	1 - -
12	406-2238-3	1A-0840	SPACER, HAND LEVER	2	2 - -
13	401-4899-1	1B-2219	LINKAGE	1	1 - -
14	410-1989-4	2A-0056	CENTER SHAFT WELDMENT	1	1 - -
15	406-2239-1	1A-0851	SPACER, PIVOT SHAFT	1	1 - -
16	401-4898-3	1B-2207	LINKAGE, PIVOT	1	1 - -
17	406-2226-8	1A-0851	SPACER, LINKAGE PIVOT	2	2 - -
18	410-2011-6	2B-0320	4' OFFSET TUBE WELDMENT	1	- - -
18	410-1988-6	2B-0311	5' OFFSET TUBE WELDMENT	-	1 - -
19	410-1990-2	2B-0312	HANDWHEEL WELDMENT	1	1 - -
20	069-1281-0	-	4' QUICK LOCK TUBE CPLG	1	- - -
20	069-1275-2	-	5' QUICK LOCK TUBE CPLG	-	1 - -
21	401-4904-9	1B-2329	LINER, COUPLING-4'	1	- - -
21	401-4889-2	1B-2309	LINER, COUPLING-5'	-	1 - -
22	401-4891-8	1B-2310	OUTLET COVER	1	1 - -
23	CA-SELECT-HW	-	HARDWARE PACKAGE	1	1 - -
24			LITERATURE PACK	1	1 - -
25			CARTON	1	1 - -
				-	- - -

PART NO.		DESCRIPTION		ASSEMBLY	
CA-SELECT-HW		HARDWARE PACKAGE		X	
				X	
				X	
				X	
ITEM	PART NO.	DWG. NO.	DESCRIPTION	QUANTITY	
A	090-1461-4	-	HFWL 3/8-16 X 1	36	- - -
B	090-1458-0	-	HFWL NUT, 3/8-16	36	- - -
C	090-1550-4	-	HFWL 1/4-20 X 1	20	- - -
D	090-1559-5	-	HFWL NUT 1/4-20	20	- - -
E	092-1016-2	-	FLAT WASHER 5/8	2	- - -
F	090-1688-2	-	FL WSHR 5/8 TYPE A SERIES N	1	- - -
G	091-1043-8	-	HEX NUT 5/8-11	2	- - -
H	091-1062-8	-	ESNA NUT 5/8-11	3	- - -
J	090-1008-3	-	HHCS 1/4-20 X 1-1/2	1	- - -
K	091-1049-5	-	ESNA NUT 1/4-20	1	- - -
L	090-1617-1	-	HFST 1/4 X 1/2 TYPE B	4	- - -
M	090-1361-6	-	HHCS 5/8-11 X 2-1/4	1	- - -
N	090-1331-9	-	HHCS 3/8-16 X 2-1/2	2	- - -
P	091-1055-2	-	ESNA NUT 3/8-16	3	- - -
R	090-1086-9	-	HHCS 3/8-16 X 1	1	- - -

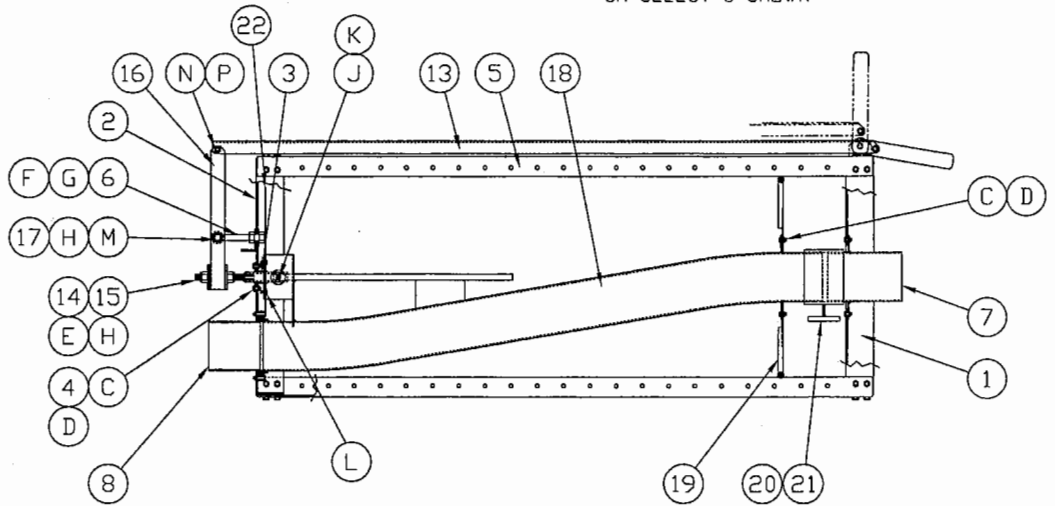
**Figure 6 Main assembly, page 1 of 3.**



CA-SELECT-5 SHOWN

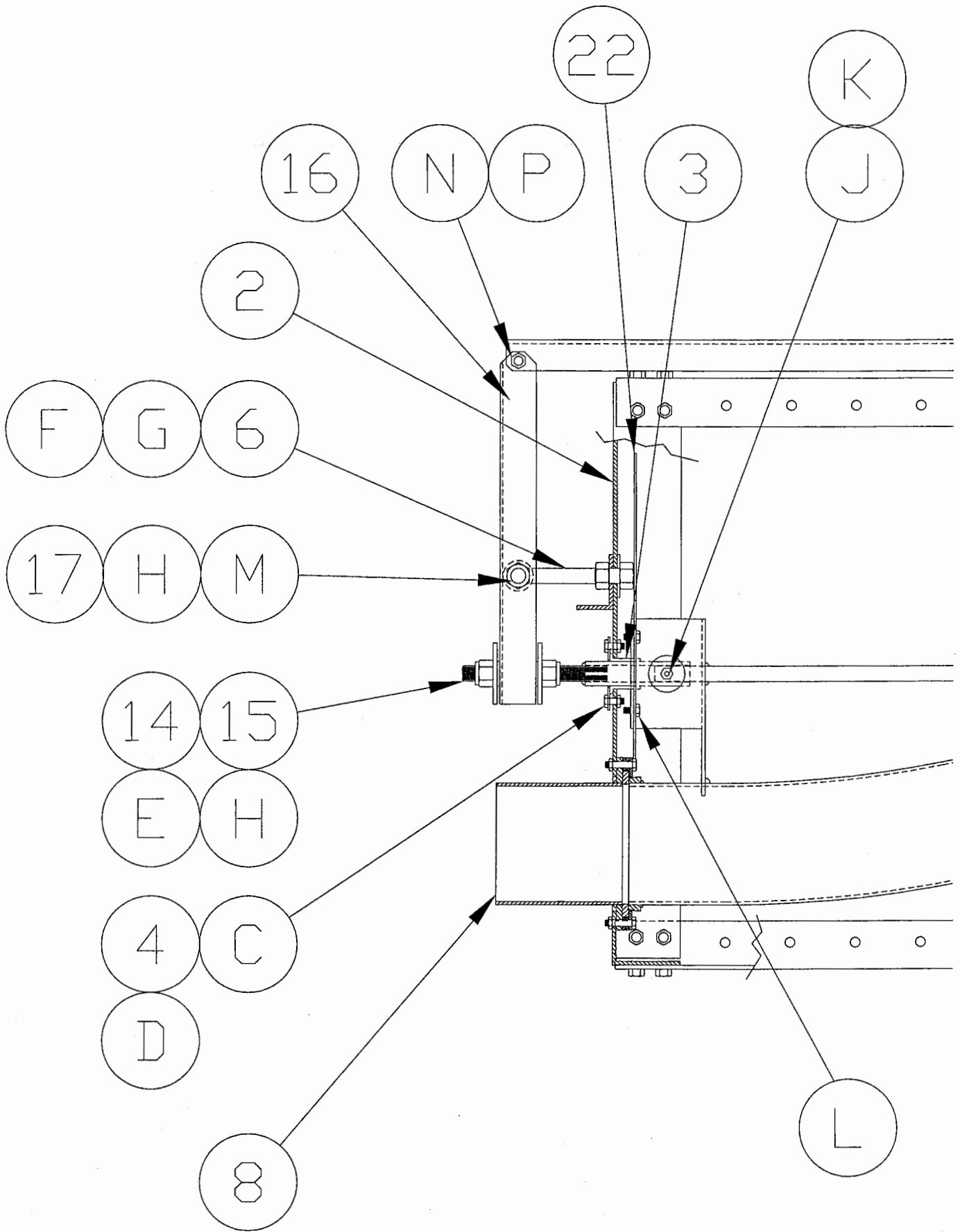


END VIEW SHOWN WITH  
MAXIMUM OF 5 OUTLETS  
(2 OUTLETS SUPPLIED WITH MAIN UNIT)

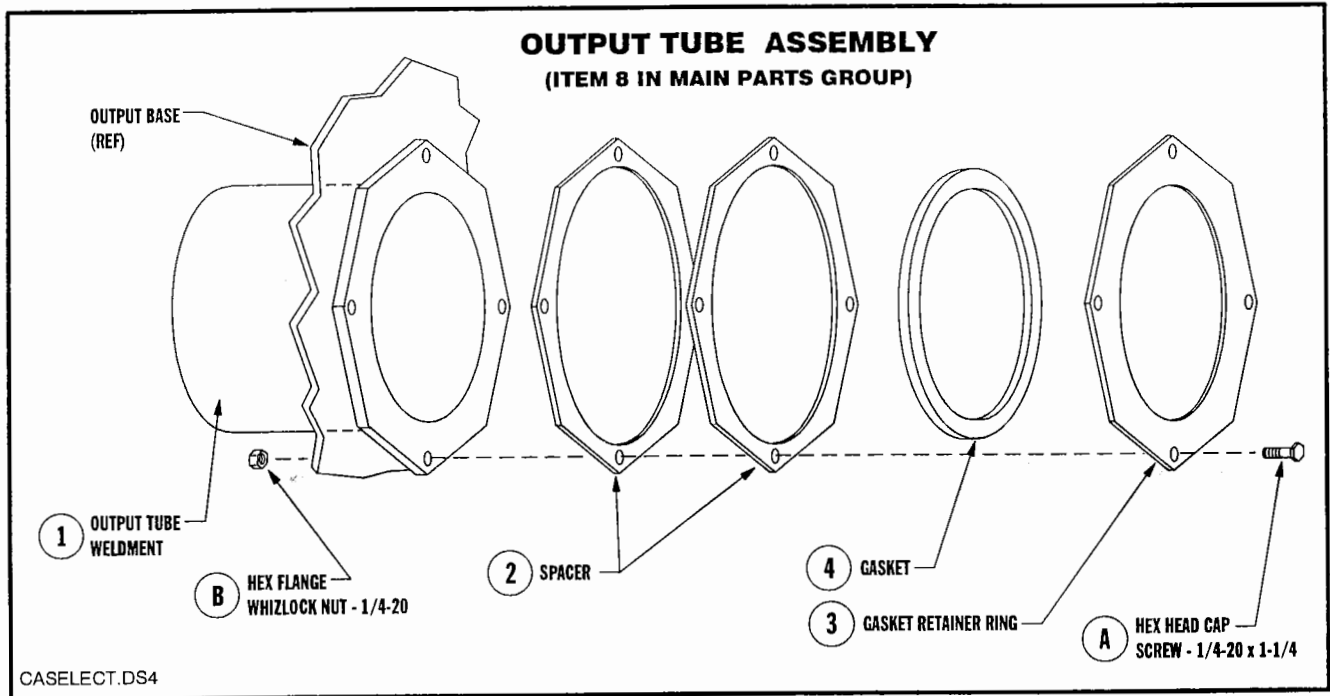


**Figure 6 Main assembly, page 2 of 3.**



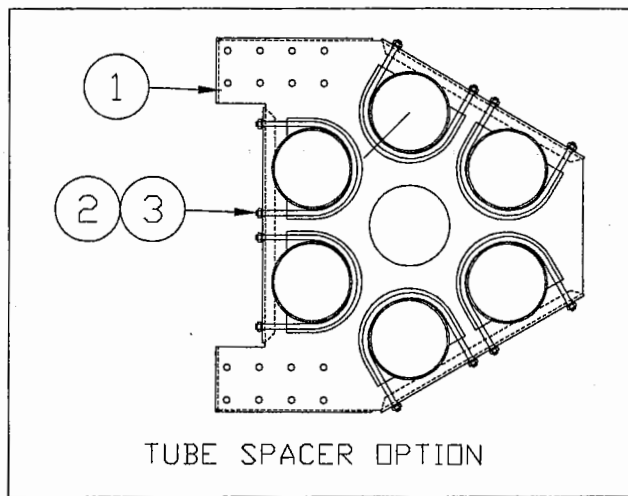


**Figure 6 Main assembly, page 3 of 3.**



PART NO.	DESCRIPTION			ASSEMBLY		
CA-SELECT-T-4	OUTPUT TUBE PARTS - 4'			X		
CA-SELECT-T-5	OUTPUT TUBE PARTS - 5'				X	
						X
						X
ITEM	PART NO.	DWG. NO.	DESCRIPTION	QUANTITY		
1	410-2010-8	2B-0314	OUTPUT TUBE WELDMENT-4'	1	-	-
1	410-1992-8	2B-0314	OUTPUT TUBE WELDMENT-5'	-	1	-
2	401-4895-9	1B-2317	GASKET SPACER RING-4'	2	-	-
2	401-4810-8	1B-2198	GASKET SPACER RING-5'	-	2	-
3	401-4896-7	1B-2318	GASKET RETAINER RING-4'	1	-	-
3	401-4811-6	1B-2199	GASKET RETAINER RING-5'	-	1	-
4	025-1089-9	-	GASKET-OUTPUT TUBE-4'	1	-	-
4	025-1090-7	-	GASKET-OUTPUT TUBE-5'	-	1	-
A	090-1067-9	-	HHCS 1/4-20 X 1-1/4	4	4	-
B	090-1559-5	-	HFWL NUT 1/4-20	4	4	-

**Figure 7 Output tube assembly.**

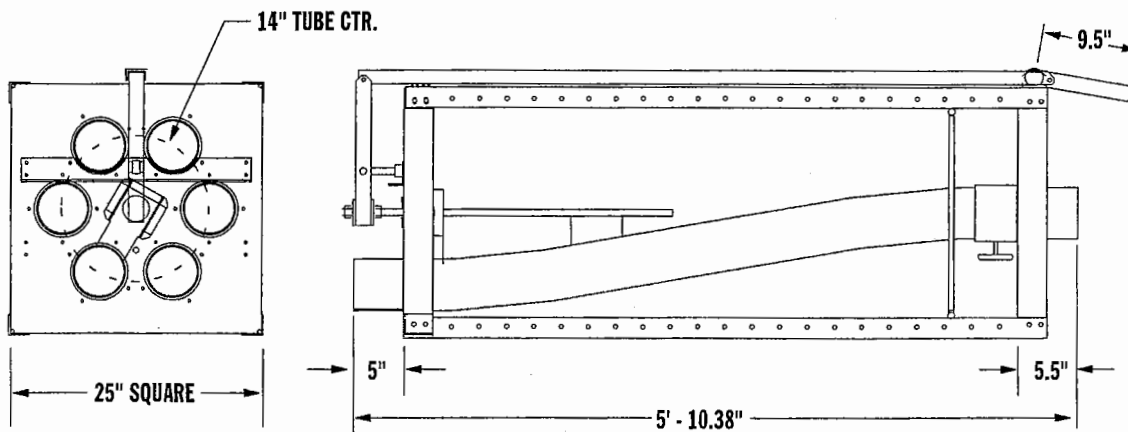


PART NO.		DESCRIPTION		ASSEMBLY		
CA-SELECT-S-4		TUBE SPACER PARTS - 4"		X		
CA-SELECT-S-5		TUBE SPACER PARTS - 5"			X	
						X
						X

ITEM	PART NO.	DWG. NO.	DESCRIPTION	QUANTITY		
1	401-4903-1	1C-1666	TUBE SPACER-4"	1	-	-
1	401-4902-3	1C-1665	TUBE SPACER-5"	-	1	-
2	406-1195-6	-	U-BOLT - 4"	6	-	-
2	406-1196-4	-	U-BOLT - 5"	-	6	-
3	090-1457-2	-	HFWL NUT 5/16-18	12	12	-

**Figure 8 Tube spacer option**



**Figure 9 General Dimensions**

CASELDIM.DS4



# **FARM FANS**

Division of ffi Corporation

5900 Elmwood Ave. • Indianapolis, IN 46203

©1996 ffi Corporation

Printed in U.S.A.