

A13522V10CRG Assembly Instructions

Instructions Manual

PNEG-1809

Date: 03-23-11

GSI GROUP



PNEG-1809

Contents

Chapter 1 Safety	4
Safety Guidelines	4
Safety Instructions	5
Chapter 2 Assembly Instructions	7
Chapter 3 Parts List	12
A13522V10CRG Parts	12
Chapter 4 Warranty	15

Safety Guidelines

This manual contains information that is important for you, the owner/operator, to know and understand. This information relates to protecting **personal safety** and **preventing equipment problems**. It is the responsibility of the owner/operator to inform anyone operating or working in the area of this equipment of these safety guidelines. To help you recognize this information, we use the symbols that are defined below. Please read the manual and pay attention to these sections. Failure to read this manual and its safety instructions is a misuse of the equipment and may lead to serious injury or death.



This is the safety alert symbol. It is used to alert you to potential personal injury hazards. Obey all safety messages that follow this symbol to avoid possible injury or death.



DANGER indicates a hazardous situation which, if not avoided, will result in death or serious injury.



WARNING indicates a hazardous situation which, if not avoided, could result in death or serious injury.



CAUTION, used with the safety alert symbol, indicates a hazardous situation which, if not avoided, could result in minor or moderate injury.



NOTICE is used to address practices not related to personal injury.

Safety Instructions

Our foremost concern is your safety and the safety of others associated with this equipment. We want to keep you as a customer. This manual is to help you understand safe operating procedures and some problems which may be encountered by the operator and other personnel.

As owner and/or operator, it is your responsibility to know what requirements, hazards and precautions exist, and to inform all personnel associated with the equipment or in the area. Safety precautions may be required from the personnel. Avoid any alterations to the equipment. Such alterations may produce a very dangerous situation where **SERIOUS INJURY** or **DEATH** may occur.

This equipment shall be installed in accordance with the current installation codes and applicable regulations which should be carefully followed in all cases. Authorities having jurisdiction should be consulted before installations are made.

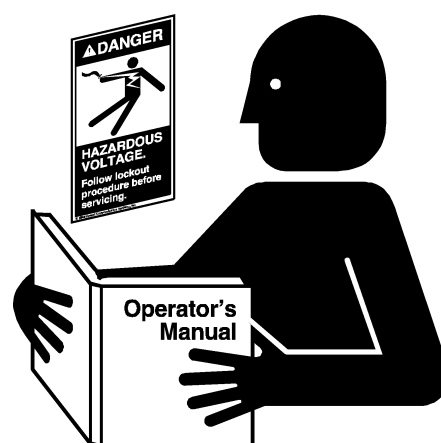
Follow Safety Instructions

Carefully read all safety messages in this manual and safety signs on your machine. Keep signs in good condition. Replace missing or damaged safety signs. Be sure new equipment components and repair parts include the current safety signs. Replacement safety signs are available from the manufacturer.

Learn how to operate the machine and how to use controls properly. Do not let anyone operate without instruction.

Keep your machinery in proper working condition. Unauthorized modifications to the machine may impair the function and/or safety and affect machine life.

If you do not understand any part of this manual or need assistance, contact your dealer.



Read and Understand Manual

Rotating Flight

Grain augers can kill or dismember.

Keep clear of all augers and never enter the bin unless all power is disconnected and locked out. Failure to do so will result in serious injury or death.



Rotating Flight

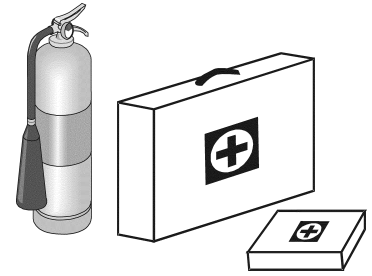
1. Safety

Prepare for Emergencies

Be prepared if fire starts.

Keep a first aid kit and fire extinguisher handy.

Keep emergency numbers for doctors, ambulance service, hospital and fire department near your telephone.



Keep Emergency Equipment Quickly Accessible

Wear Protective Clothing

Wear close fitting clothing and safety equipment appropriate to the job.

Remove all jewelry.

Long hair should be tied up and back.

Safety glasses should be worn at all times to protect eyes from debris.

Wear gloves to protect your hands from sharp edges on plastic or steel parts.

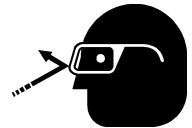
Wear steel toe boots to help protect your feet from falling debris. Tuck in any loose or dangling shoe strings.

A respirator may be needed to prevent breathing potentially toxic fumes and dust.

Wear hard hat to help protect your head.

Wear appropriate fall protection equipment when working at elevations greater than six feet (6').

Eye Protection



Gloves



Steel Toe Boots



Respirator



Hard Hat



Fall Protection



2. Assembly Instructions

1. Attach column leg weldments to each beam. Attach one A-VTDL0028 at each end of beams. Use A-VTDL0025 at the remaining locations on the beams. See [below](#) table for quantities per beam. (See [Figure 2A](#).)

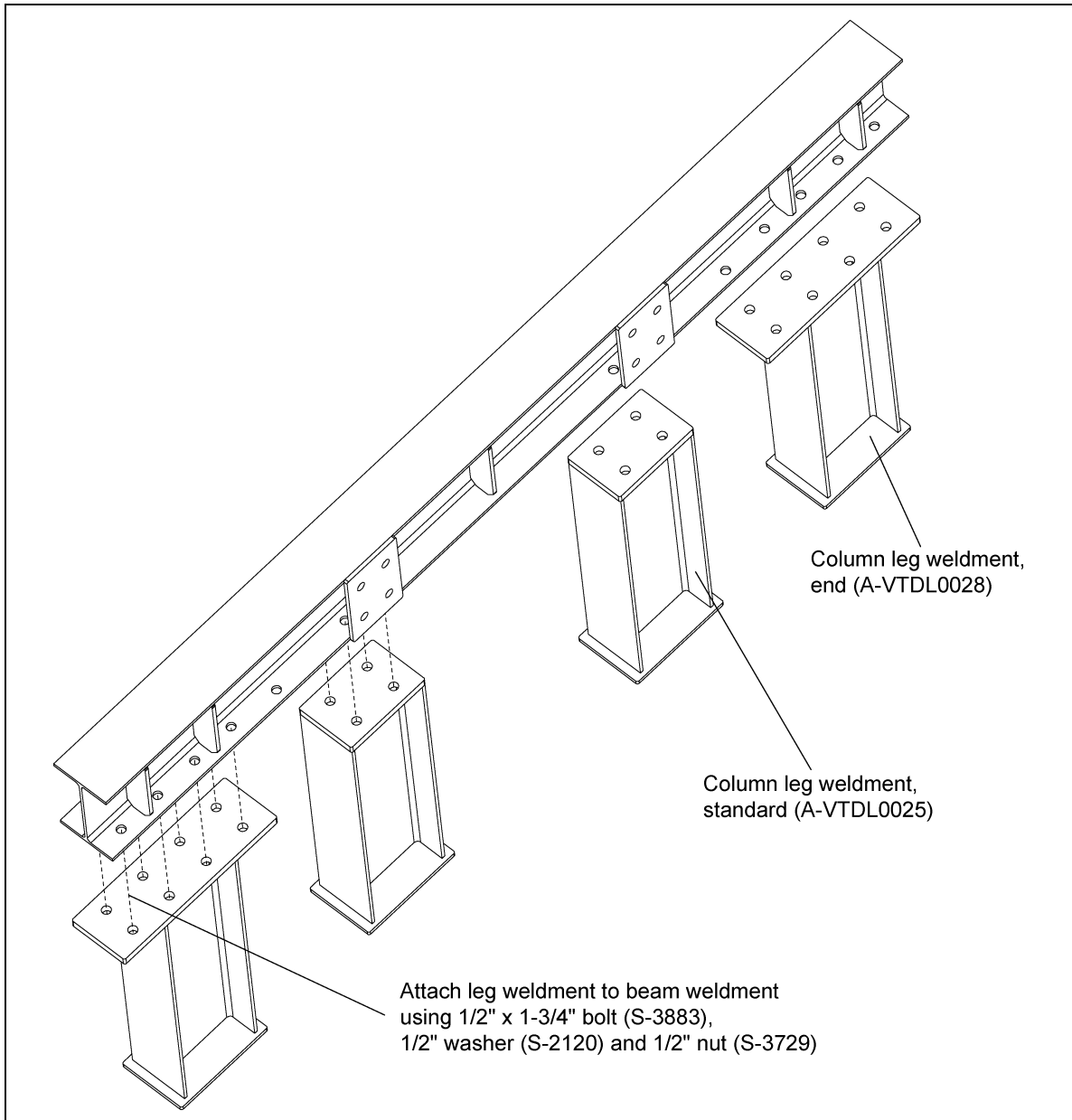


Figure 2A

Beam #	# of A-VTDL0025	# of A-VTDL0028
A-VTDL0004	2	2
A-VTDL0005	9	2
A-VTDL0008	15	2
A-VTDL0010	7	2
A-VTDL0012	6	2
A-VTDL0016	4	2

2. Assembly Instructions

2. Attach cross beam weldments to horizontal weldments using 1/2" hardware. Twelve (12) cross beams locations in complete floor. (See Figure 2B.)

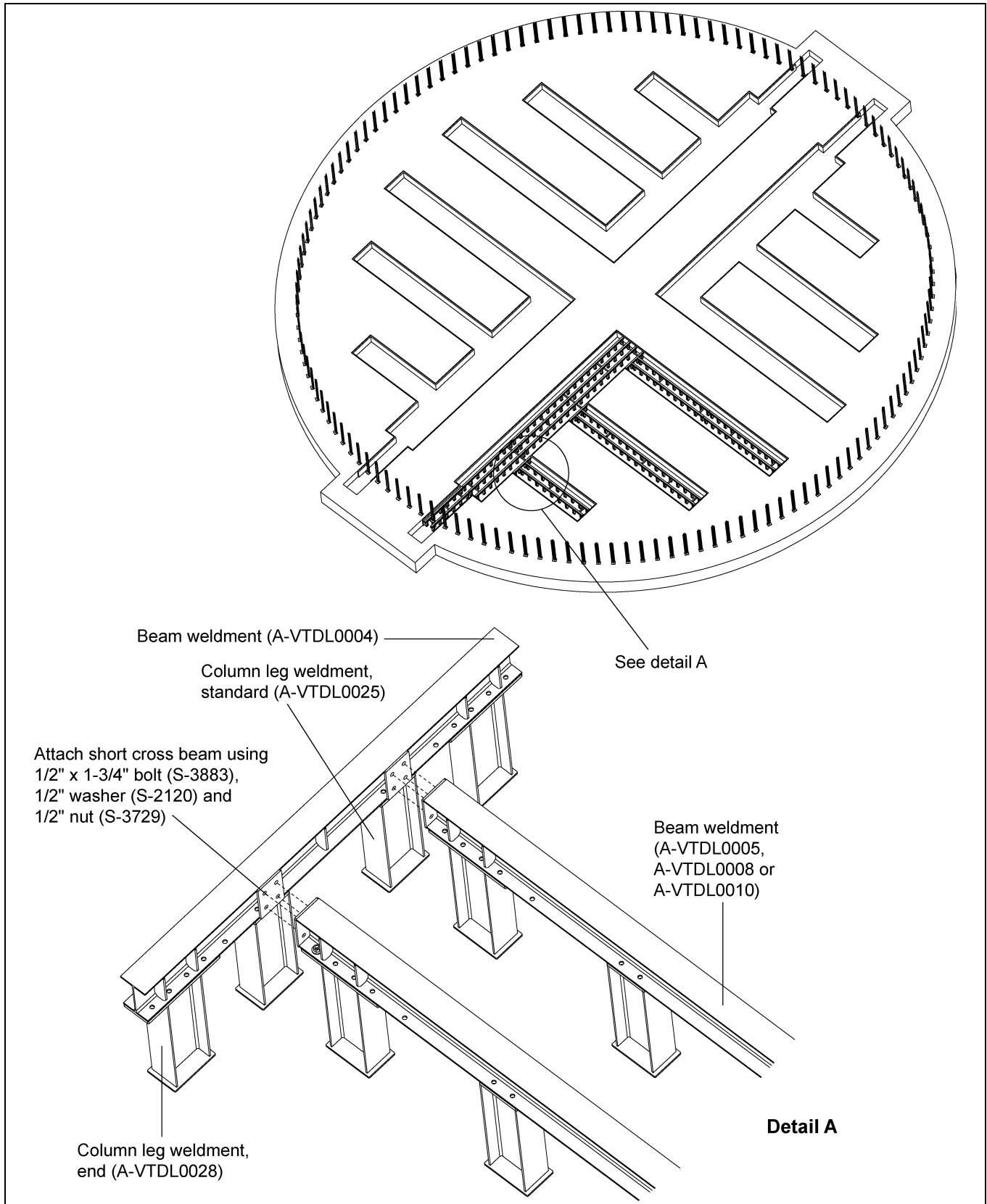


Figure 2B

3. Use 1/2" hardware to attach beams end to end. (See Figure 2C.)

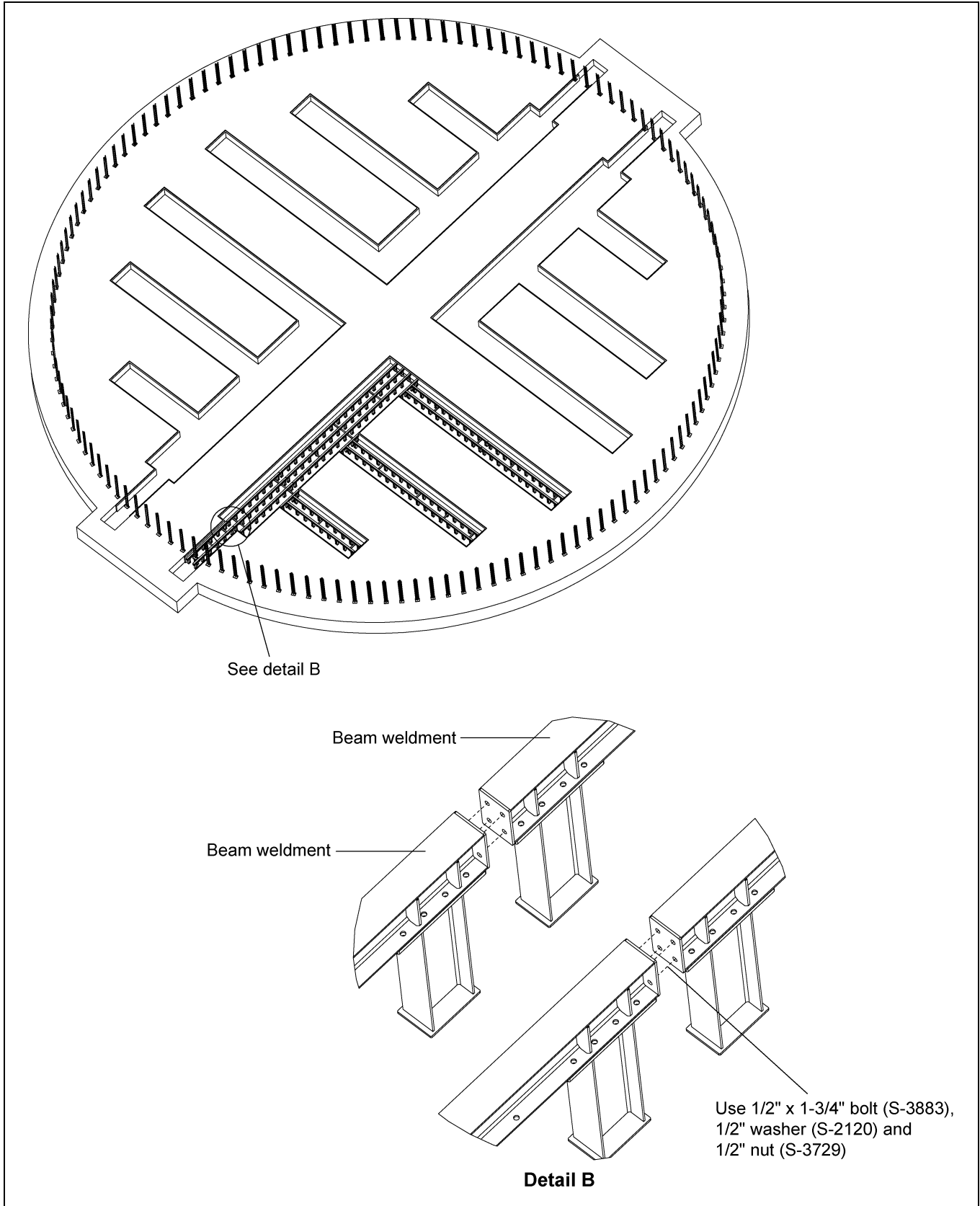


Figure 2C

2. Assembly Instructions

4. Attach VTDL aeration floor angle to beam weldments at both ends, using both slots. 1/2" Hardware used to attach the angle. See detail D *below* for instructions on how angle attaches to cross beam. (Twelve (12) locations.) (See Figure 2D.)

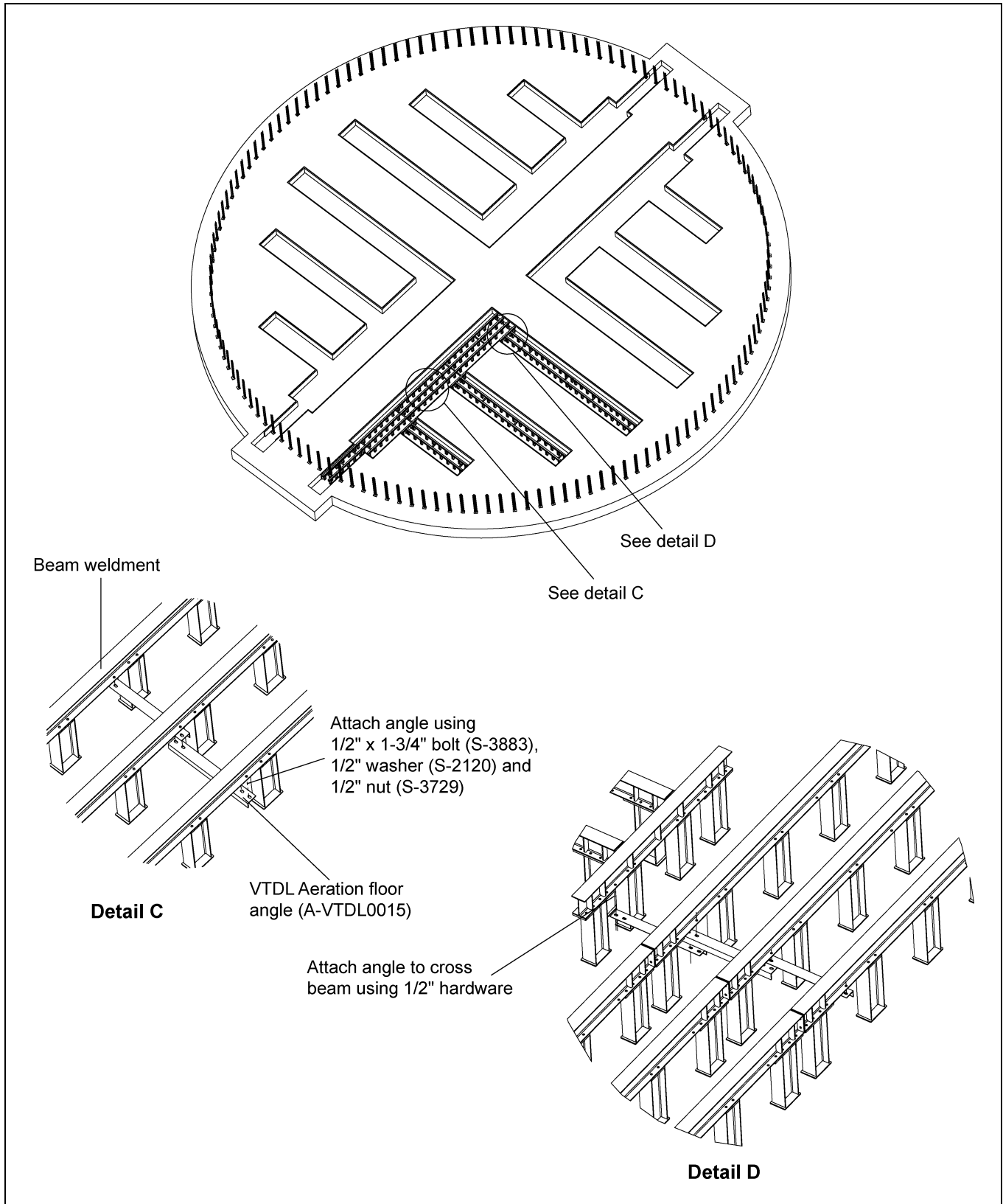


Figure 2D

5. Special stiffener support post weldment (A-VTDL0018) used to support stiffeners that are located directly above the tunnels. Attach stiffener to stiffener support post and attach stiffener support post to bottom of tunnel using anchors not provided by GSI. (See Figure 2E.)

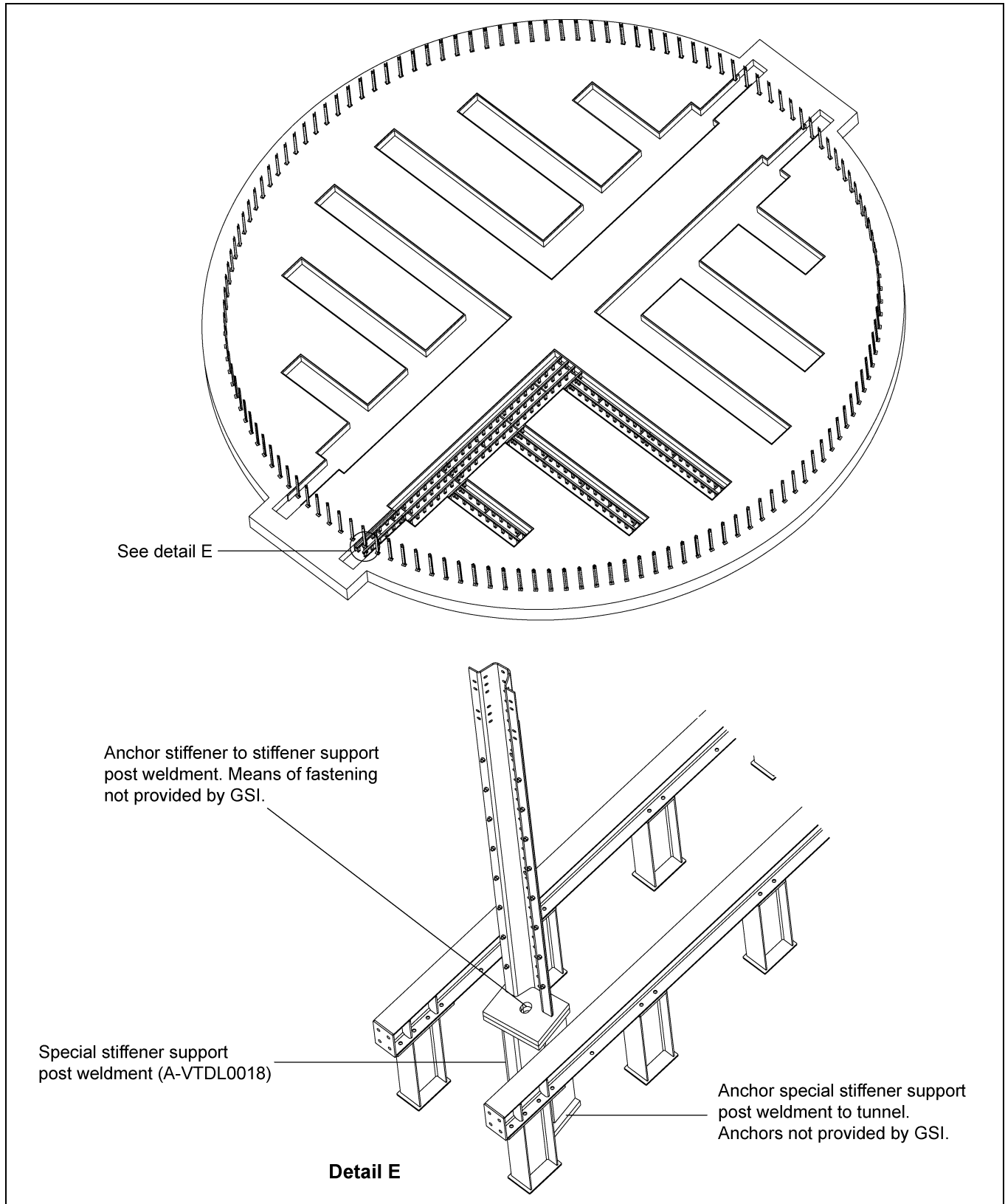
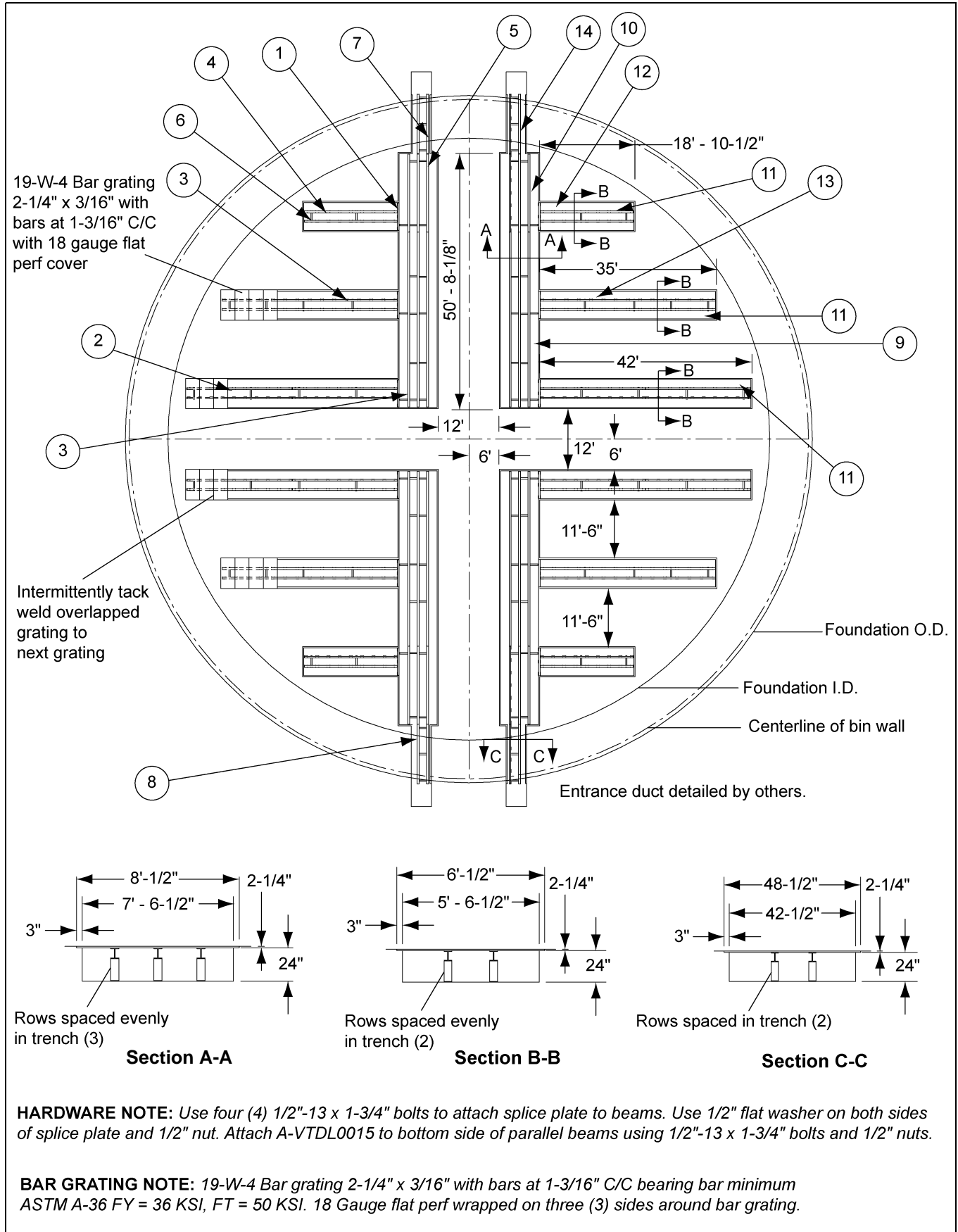


Figure 2E

3. Parts List

A13522V10CRG Parts



A13522V10CRG Parts List

NOTE: GSI supplies only the following.

Ref #	Part #	Description	Qty
1	A-VTDL0004	Beam Weldment, W6-9A992 VTDL Aeration Floor 64-1/2" Long	12
2	A-VTDL0005	Beam Weldment, W6-9A992 VTDL Aeration Floor 249-1/2" Long	16
3	A-VTDL0008	Beam Weldment, W6-9A992 VTDL Aeration Floor 415-1/2" Long	20
4	A-VTDL0010	Beam Weldment, W6-9A992 VTDL Aeration Floor 220-1/2" Long	8
5	A-VTDL0012	Beam Weldment, W6-9A992 VTDL Aeration Floor 253.885" Long	12
6	A-VTDL0015	Angle, VTDL Aeration Floor 27GÇ¥ Long	128
7	A-VTDL0016	Beam Weldment, W6-9A992 VTDL Aeration Floor 141-1/2" Long	8
8	A-VTDL0018	Special 26-1/4" Stiffener Support Post Weldment	4
9	A-VTDL0030	Bar Grating with 18 Gauge Perf Cover, 19-W-4 Bar Grating 33-7/16" x 8' Long (See Bar Grating Note on Page 12.)	68
10	A-VTDL0031	Bar Grating with 18 Gauge Perf Cover, 19-W-4 Bar Grating 19-3/16" x 8' Long (See Bar Grating Note on Page 12.)	8
11	A-VTDL0032	Bar Grating with 18 Gauge Perf Cover, 19-W-4 Bar Grating 33-7/16" x 6' Long (See Bar Grating Note on Page 12.)	132
12	A-VTDL0033	Bar Grating with 18 Gauge Perf Cover, 19-W-4 Bar Grating 25-1/8" x 6' Long (See Bar Grating Note on Page 12.)	4
13	A-VTDL0029	Bar Grating with 18 Gauge Solid Cover, 19-W-4 Bar Grating 18" x 4' Long (See Bar Grating Note on Page 12.)	4
14	A-VTDL0034	Bar Grating with 18 Gauge Solid Cover, 19-W-4 Bar Grating 33-7/16" x 4' Long (See Bar Grating Note on Page 12.)	16
N/S	A-VTDL0025	Column Leg Weldment, Standard 18.1" Tall W6-9A992	630
N/S	A-VTDL0028	Column Leg Weldment, End 18.1" Tall W6-9A992	155
N/S	PL-8926	A13522V10CRG Hardware Package	1

NOTES

GSI Group, LLC Limited Warranty

The GSI Group, LLC ("GSI") warrants products which it manufactures to be free of defects in materials and workmanship under normal usage and conditions for a period of 12 months after sale to the original end-user or if a foreign sale, 14 months from arrival at port of discharge, whichever is earlier. The end-user's sole remedy (and GSI's only obligation) is to repair or replace, at GSI's option and expense, products that in GSI's judgment, contain a material defect in materials or workmanship. Expenses incurred by or on behalf of the end-user without prior written authorization from the GSI Warranty Group shall be the sole responsibility of the end-user.

Warranty Extensions:

The Limited Warranty period is extended for the following products:

	Product	Warranty Period	
AP Fans and Flooring	Performer Series Direct Drive Fan Motor	3 Years	* Warranty prorated from list price: 0 to 3 years - no cost to end-user 3 to 5 years - end-user pays 25% 5 to 7 years - end-user pays 50% 7 to 10 years - end-user pays 75%
	All Fiberglass Housings	Lifetime	
	All Fiberglass Propellers	Lifetime	
Cumberland Feeding/Watering Systems	Feeder System Pan Assemblies	5 Years **	** Warranty prorated from list price: 0 to 3 years - no cost to end-user 3 to 5 years - end-user pays 50%
	Feed Tubes (1-3/4" and 2.00")	10 Years *	
	Centerless Augers	10 Years *	
	Watering Nipples	10 Years *	
Grain Systems	Grain Bin Structural Design	5 Years	† Motors, burner components and moving parts not included. Portable dryer screens included. Tower dryer screens not included.
Grain Systems Farm Fans Zimmerman	Portable and Tower Dryers	2 Years	
	Portable and Tower Dryer Frames and Internal Infrastructure †	5 Years	

GSI further warrants that the portable and tower dryer frame and basket, excluding all auger and auger drive components, shall be free from defects in materials for a period of time beginning on the twelfth (12th) month from the date of purchase and continuing until the sixtieth (60th) month from the date of purchase (extended warranty period). During the extended warranty period, GSI will replace the frame or basket components that prove to be defective under normal conditions of use without charge, excluding the labor, transportation, and/or shipping costs incurred in the performance of this extended warranty.

Conditions and Limitations:

THERE ARE NO WARRANTIES THAT EXTEND BEYOND THE LIMITED WARRANTY DESCRIPTION SET FORTH ABOVE. SPECIFICALLY, GSI MAKES NO FURTHER WARRANTY OF ANY KIND, EXPRESS OR IMPLIED, INCLUDING, WITHOUT LIMITATION, WARRANTIES OF MERCHANTABILITY OR FITNESS FOR A PARTICULAR PURPOSE OR USE IN CONNECTION WITH: (I) PRODUCT MANUFACTURED OR SOLD BY GSI OR (II) ANY ADVICE, INSTRUCTION, RECOMMENDATION OR SUGGESTION PROVIDED BY AN AGENT, REPRESENTATIVE OR EMPLOYEE OF GSI REGARDING OR RELATED TO THE CONFIGURATION, INSTALLATION, LAYOUT, SUITABILITY FOR A PARTICULAR PURPOSE, OR DESIGN OF SUCH PRODUCTS.

GSI shall not be liable for any direct, indirect, incidental or consequential damages, including, without limitation, loss of anticipated profits or benefits. The sole and exclusive remedy is set forth in the Limited Warranty, which shall not exceed the amount paid for the product purchased. This warranty is not transferable and applies only to the original end-user. GSI shall have no obligation or responsibility for any representations or warranties made by or on behalf of any dealer, agent or distributor.

GSI assumes no responsibility for claims resulting from construction defects or unauthorized modifications to products which it manufactured. Modifications to products not specifically delineated in the manual accompanying the equipment at initial sale will void the Limited Warranty.

This Limited Warranty shall not extend to products or parts which have been damaged by negligent use, misuse, alteration, accident or which have been improperly/inadequately maintained. This Limited Warranty extends solely to products manufactured by GSI.

Prior to installation, the end-user has the responsibility to comply with federal, state and local codes which apply to the location and installation of products manufactured or sold by GSI.

This equipment shall be installed in accordance with the current installation codes and applicable regulations which should be carefully followed in all cases. Authorities having jurisdiction should be consulted before installations are made.

G S I G R O U P



GSI Group
1004 E. Illinois St.
Assumption, IL 62510-0020
Phone: 1-217-226-4421
Fax: 1-217-226-4420
www.gsiag.com