



1004 East Illinois Street • Assumption, IL 62510 • 1-217-226-4421

Instructions Auto-Start Update Kit Installation Instructions for Portable Dryer

Auto-Start Software and Moisture Control Board Installation



Disconnect and lock out all power sources before performing maintenance.

These instructions cover the Vision Auto-Start Kit (VIS-AUTOSTART-KIT).

This kit contains the following parts:

PNEG-2063	Auto-Start Update Kit Instructions (This manual)
PNEG-1506	Vision Update Programming Instructions
PNEG-1728	Vision Hard Drive Replacement Instructions
PNEG-1729	Vision Reset to Factory Default
D03-0753DISK-203-2	Replacement Hard Disk for Pre-2010 Control
D03-0753DISK-203	Replacement Hard Disk for 2010 Controls to Present
D03-1212	Vision Expert Moisture Control board

Installing the New Moisture Control Board

1. In the switch panel control box, locate the existing moisture control board on the back panel.
2. Disconnect the three (3) green plug connectors from the circuit board and the two (2) Cat5E ethernet cables. **TIP:** You may want to label the plug for dry sensor and the plug for the wet sensor to ensure they are correctly installed into the new board. (See Figure 1.)

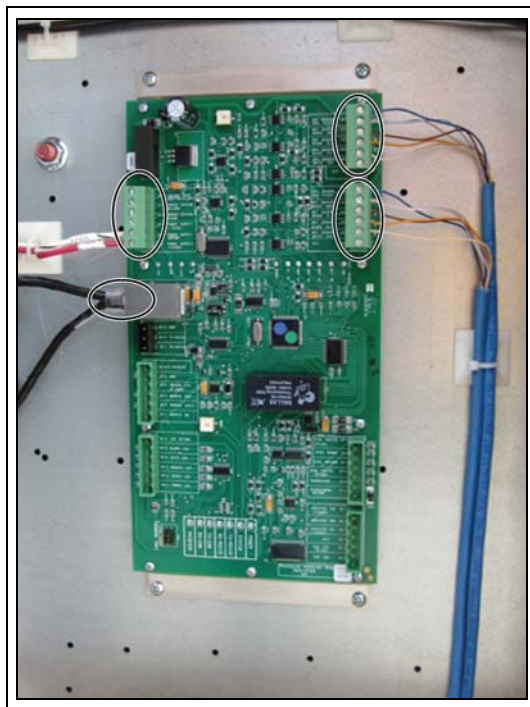


Figure 1 Remove Connections from the Old Moisture Control Board



Auto-Start Update Kit Installation Instructions for Portable Dryer

3. Remove the four (4) screws holding the board mounting bracket from the back panel. *(See Figure 2.)*

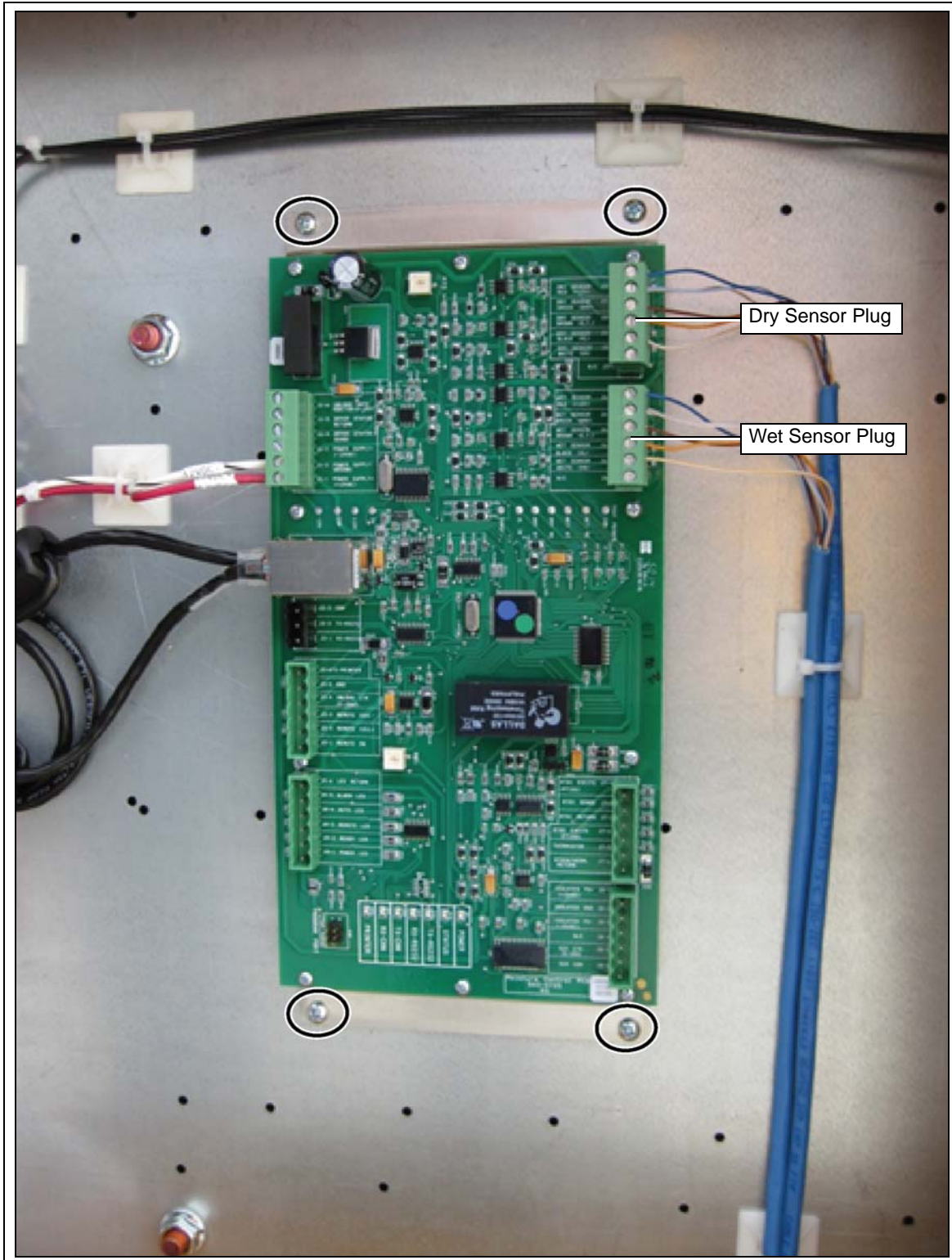


Figure 2 Remove Bracket and MC Board

4. Install the new board to the back panel using the original screws.

NOTE: You will need to field drill holes in the back panel for the bracket holes that do not align with existing holes in the back panel.

Auto-Start Update Kit Installation Instructions for Portable Dryer

5. Re-install all the connections to the new moisture control board. (See Figure 3.)

- Power Plug (has the 12 VDC negative and 12 VDC positive wires)
- Cat5 Ethernet cable
- Wet Sensor Plug
- Dry Sensor Plug
- Holes to be drilled in the field

NOTE: The WET and DRY sensor plugs orientation has changed in Figure 3.

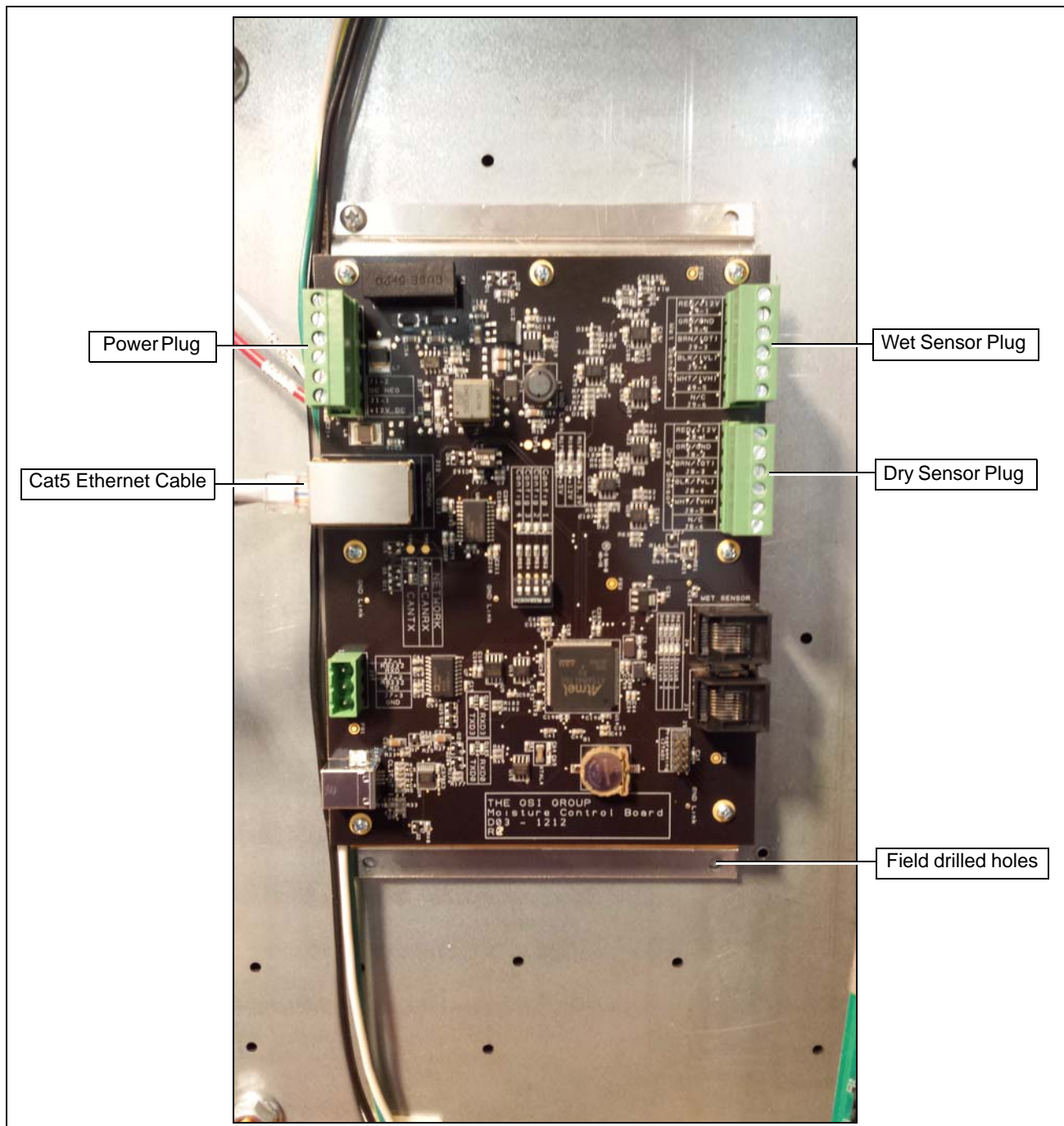


Figure 3 New Style Moisture Control Board

Installing the New Drive onto the Vision Display I/O Board

1. Temporarily remove the four (4) screws holding the Display I/O board mounting bracket from the back of the Vision display, exposing the inside of the display. (See Figure 4.)

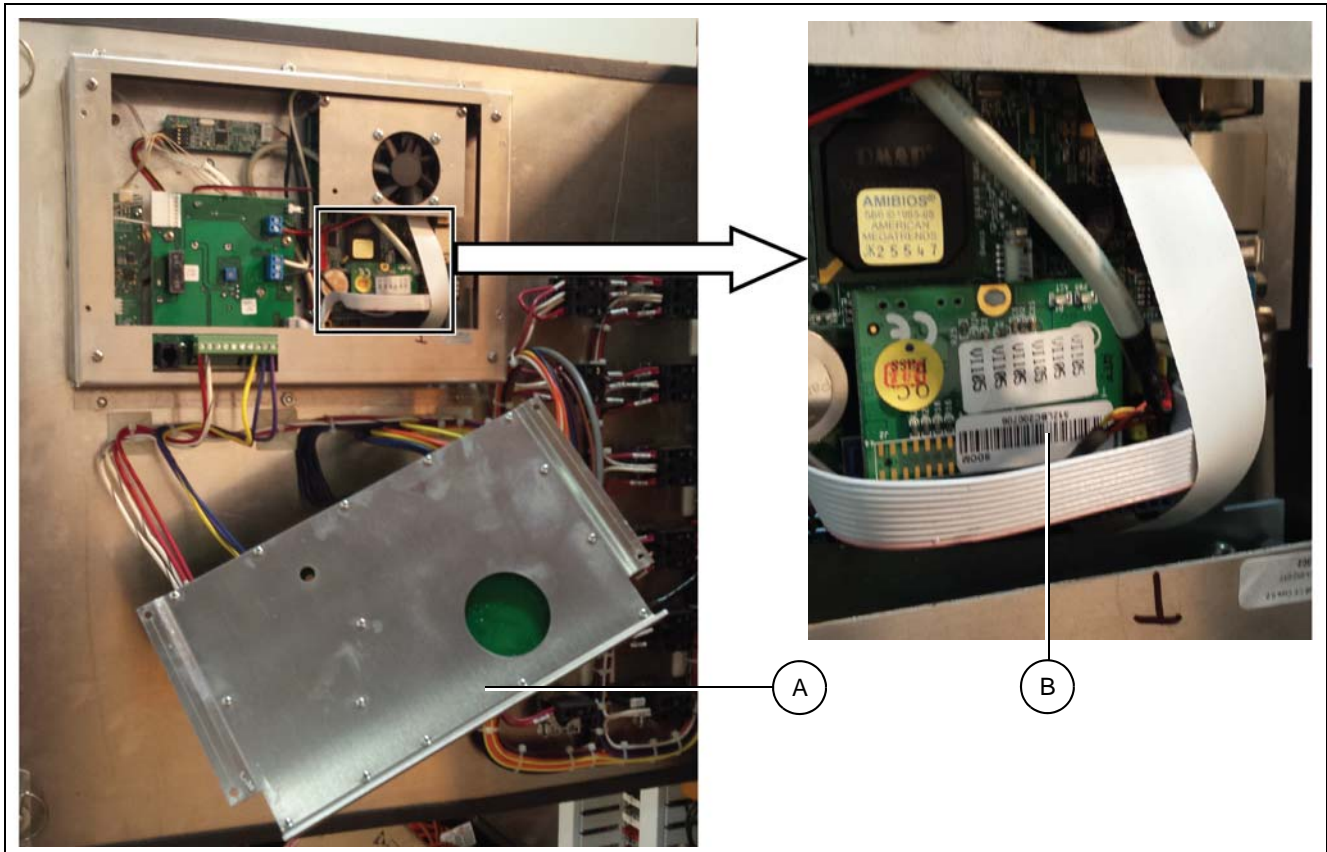


Figure 4 Drive Location

Ref #	Description
A	Display I/O Board
B	Old Drive

Auto-Start Update Kit Installation Instructions for Portable Dryer

2. Use needle nose pliers to squeeze together the white nylon mounting post tabs to allow the board to be removed. (See Figure 5.)

NOTE: Once the nylon post is below the board, remove the hard disk from the parent circuit board by pulling at each side of the boards plug. (See Figure 6.)

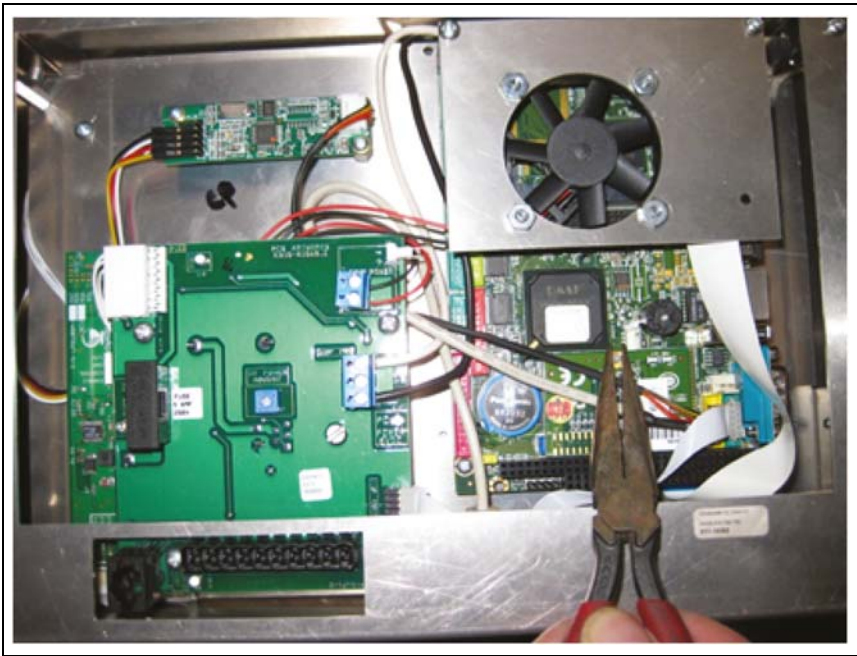


Figure 5 Hard Disk Removal (2nd generation shown.)

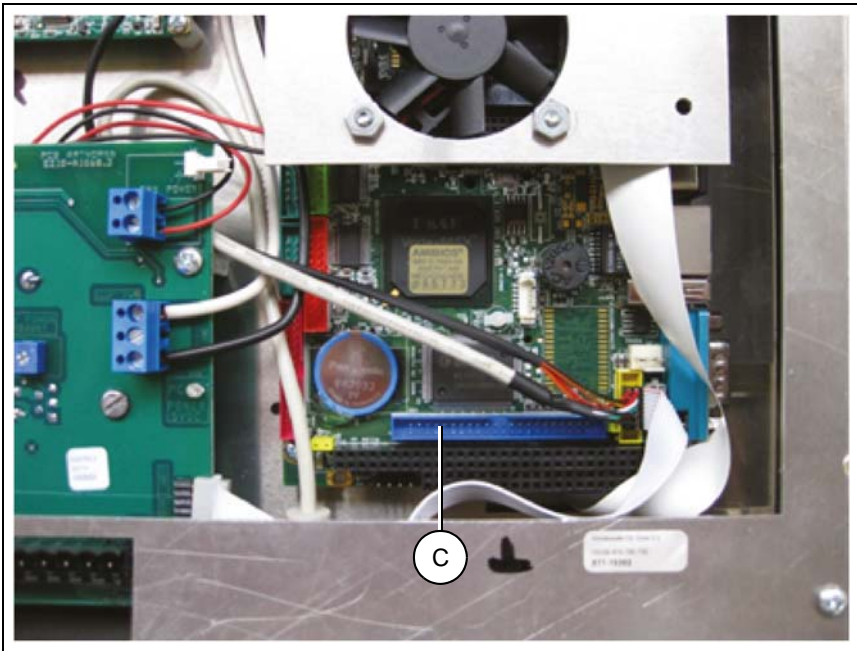


Figure 6 Hard Disk Removed

Ref #	Description
C	Installation Socket for the Drive

Auto-Start Update Kit Installation Instructions for Portable Dryer

3. Determine if the Vision display is the 1st or 2nd generation by reviewing the location of the black and white wires as shown in [Figure 7](#) and [Figure 8](#).

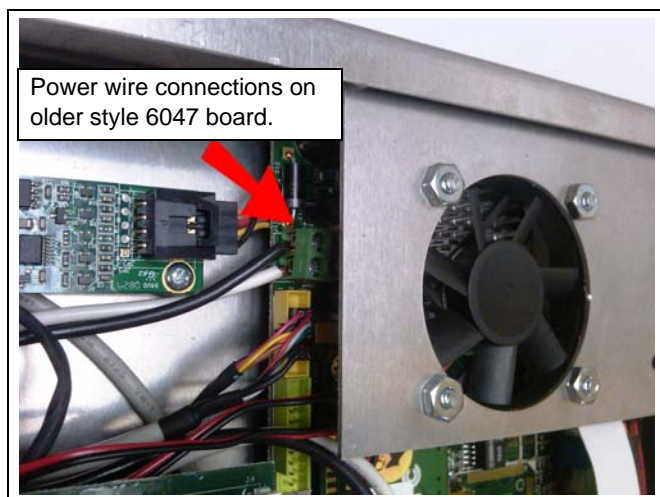


Figure 7 6047 Board Use **D03-0753DISK-203-2**
(1st Generation)

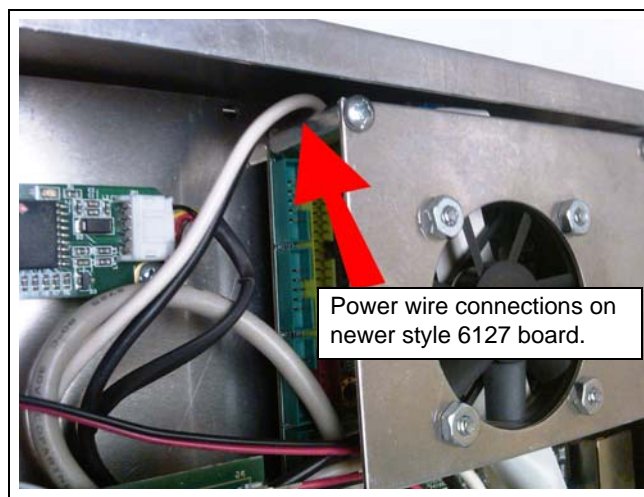


Figure 8 6127 Board Use **D03-0753DISK-203**
(2nd Generation)

NOTE: If replacing the disk in the 1st generation unit as shown in [Figure 3 on Page 3](#), then you may need to remove four (4) screws to the outer cover then the two (2) screws holding the fan plate to gain access to the disk drive.

Once you have identified which disk drive to install be sure to use this drive in the following instructions. The other drive will not be used.

4. Insert the new hard disk onto the socket and nylon post.

NOTE: Pay close attention when inserting the new drive that it is centered properly in the blue socket as it is easy to become off centered. The new drive will already have the updated programming pre-installed.

5. Re-install the Display I/O Board to the back of the display using the four (4) previously removed screws.
6. Once everything is re-assembled, close the switch panel and turn ON the controls.
7. At the first screen, you will need to press the Install Dryer Software button to update all of the circuit boards with v2.03 software. (See PNEG-1506 for reference.)
8. **NOTE:** If you do not see the first screen load onto the display, then most likely you either installed the incorrect version of disk drive or the drive was inserted incorrectly into the socket. Review the installation process to be sure the correct drive was selected. No damage will occur if the wrong disk is used.

Verify Dipswitch Settings in Fan/Heater Control Box

The EOL (End Of Line) switch on the top most fan/heater board must be switched to the ON position. This is critical for the new moisture control board to be found when updating the software on your system. [Figure 9](#) shows the location of the fan/heater board inside the fan/heater control box. [Figure 10](#) shows the correct dipswitch to turn ON.

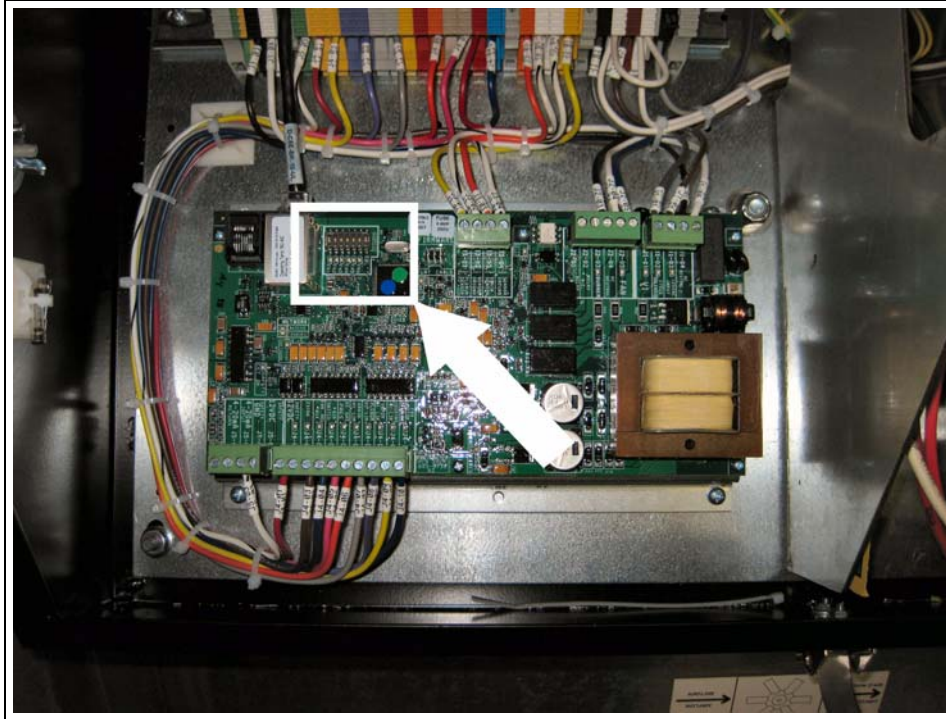


Figure 9 Location of Fan/Heater Board

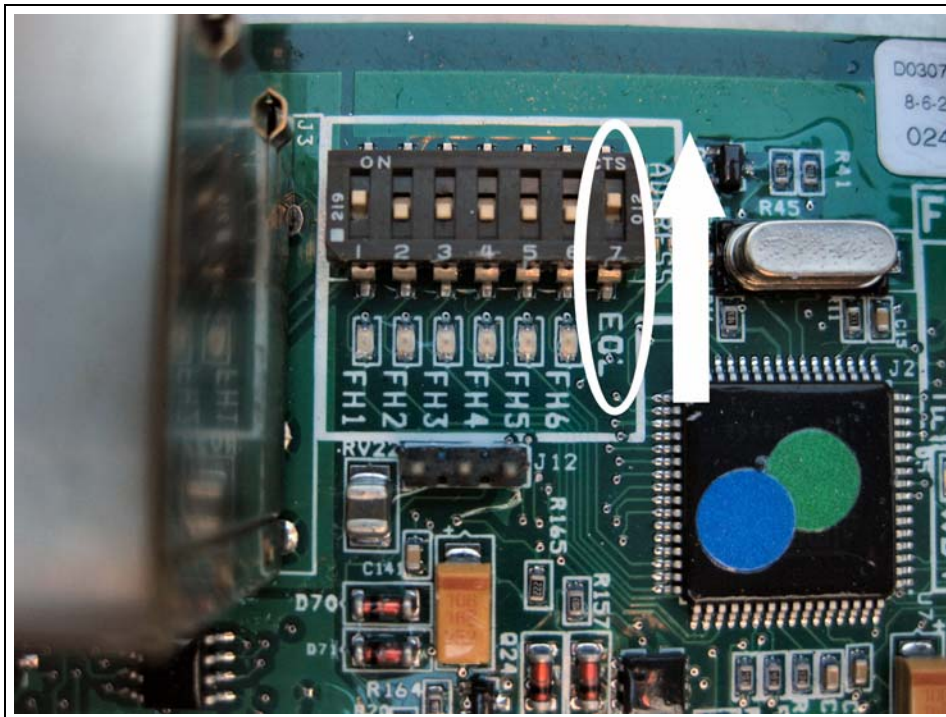


Figure 10 Dipswitch Position