



The grain brake brace is used to strengthen the grain brake plates in the unload section of the dryer.

1. Set the grain brake position as needed.
2. Install a brake brace clip (3) to each side of the hopper channels (5) using 3/8" x 1" flange bolts (1) and 3/8" flange nuts (2). (See Figure 1.)

NOTE: Do not tighten the hardware.

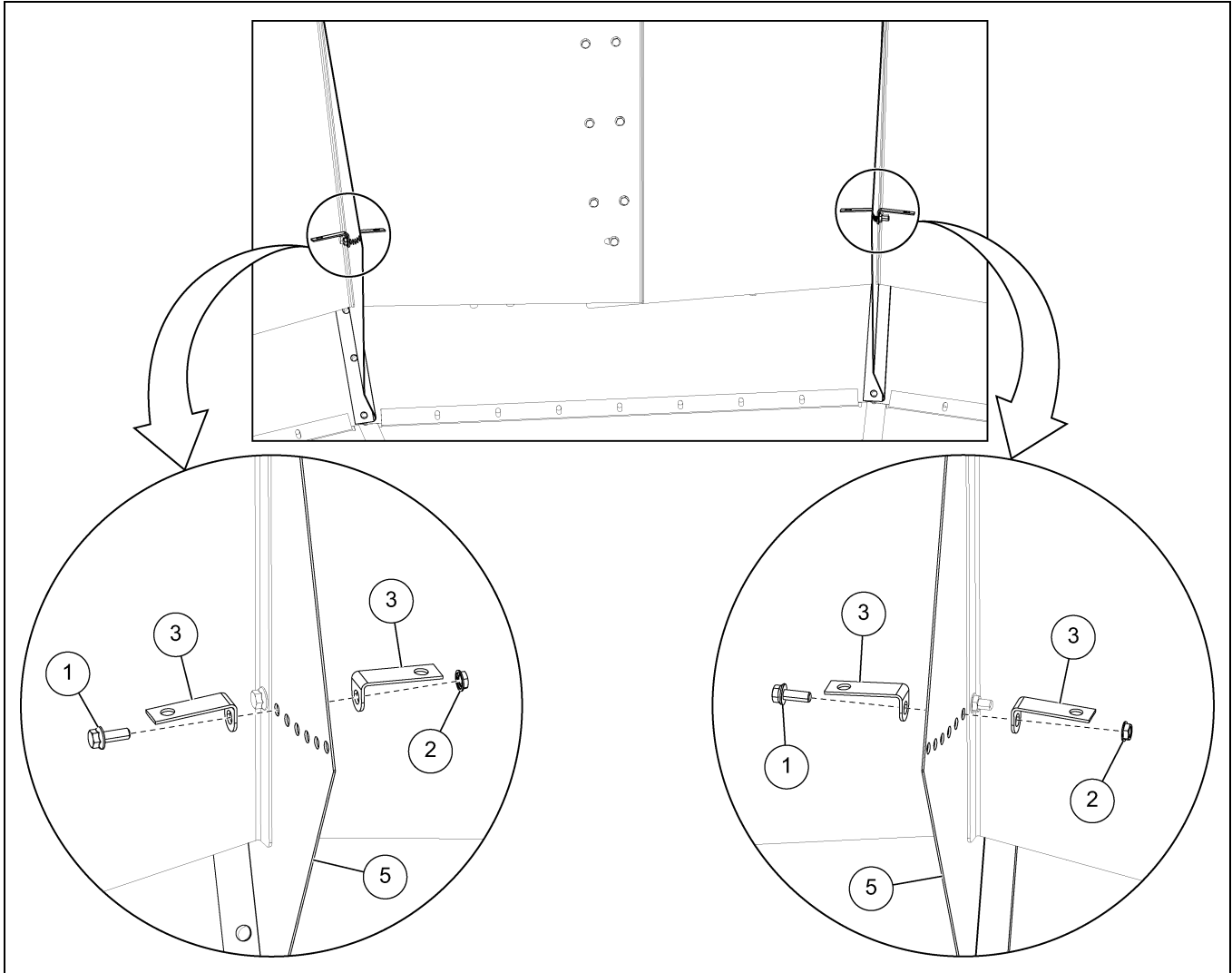


Figure 1 Installing the Brake Brace Clips to the Hopper Channel

Ref #	Part #	Description
1	S-9065	3/8" x 1" Flange Bolts ZN Grade 5
2	S-10028	3/8" Flange Nuts ZN Grade 5
3	GT1-2677	12K Grain Brake Brace Clip
5	GT1-1421	Hopper Channel



12K Grain Brake Brace Kit Installation

3. Install a brake brace (4) to the pair of brake brace clips (3) between each hopper channels using 3/8" x 1" flange bolts (1) and 3/8" flange nuts (2). (See Figure 2.)

NOTE: Do not tighten the hardware.

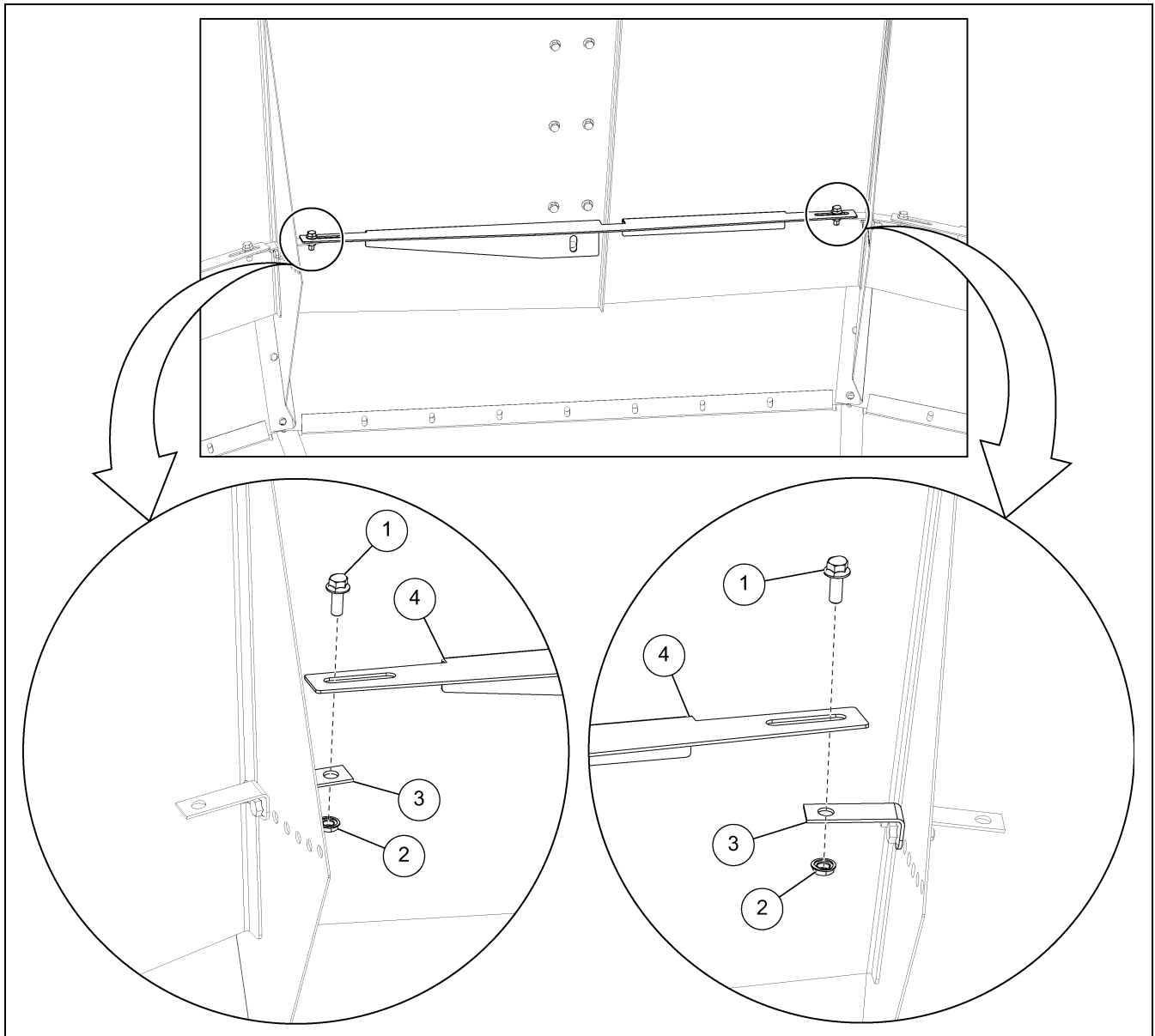


Figure 2 *Installing the Brake Brace to the Brace Clips*

Ref #	Part #	Description
1	S-9065	3/8" x 1" Flange Bolts ZN Grade 5
2	S-10028	3/8" Flange Nuts ZN Grade 5
3	GT1-2677	12K Grain Brake Brace Clip
4	GT1-2676	12K Grain Brake Brace

12K Grain Brake Brace Kit Installation

4. Attach the brake brace (4) to the plate assembly (6 and 7) using the existing hardware (1 and 2).
(See Figure 3.)
5. Make necessary adjustments and tighten all the hardware.

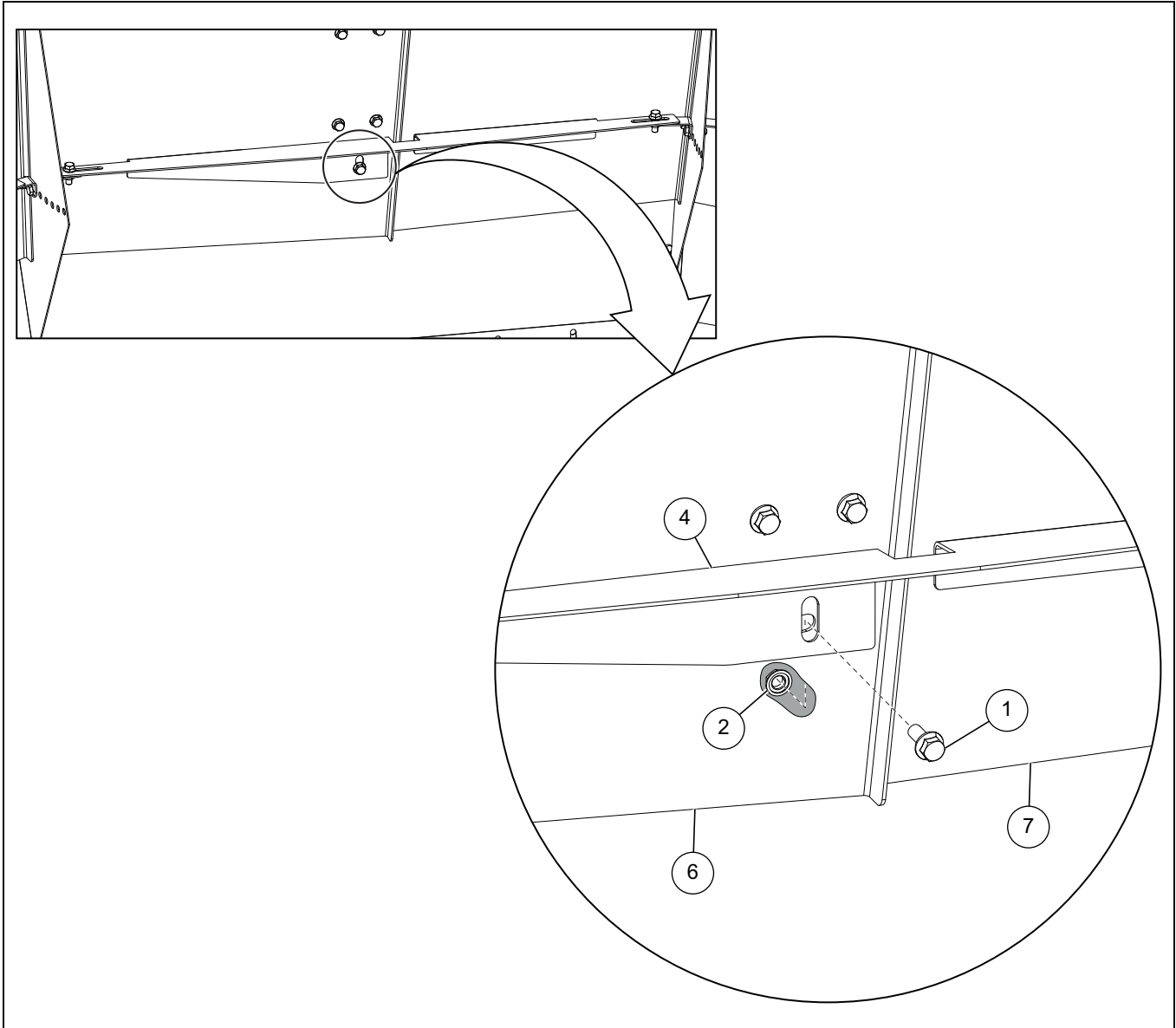


Figure 3 Attaching the Brake Brace to the Plate Assembly

Ref #	Part #	Description
1	S-9065	3/8" x 1" Flange Bolts ZN Grade 5
2	S-10028	3/8" Flange Nuts ZN Grade 5
4	GT1-2676	12K Grain Brake Brace
6	GT1-1424-A	Adjustable Left Gate
7	GT1-1425-A	Adjustable Right Gate

12K Grain Brake Brace Kit Installation

6. The 12K grain brake brace kit is installed on the hopper base assembly as shown in *Figure 4*.

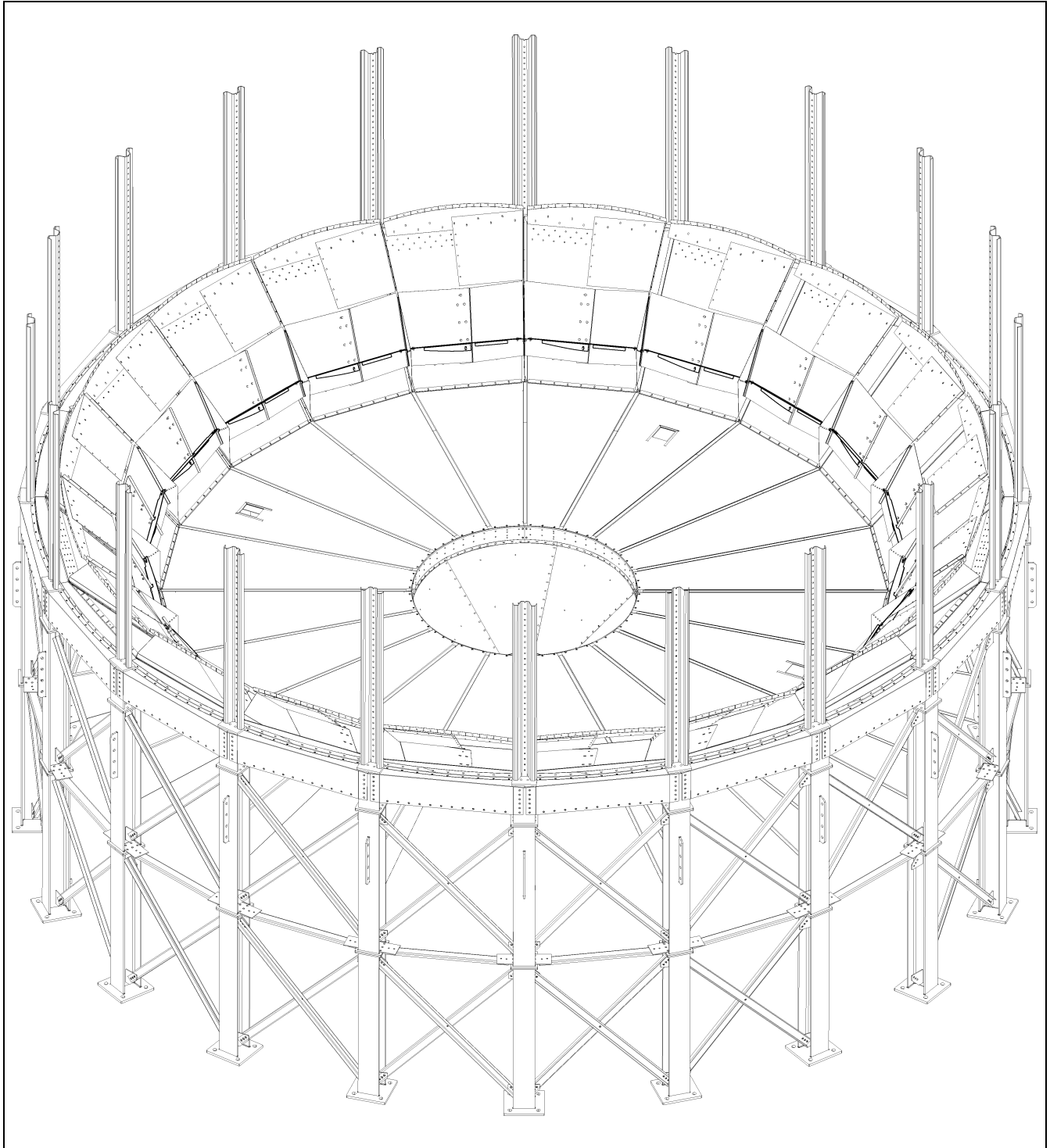


Figure 4 Hopper Base Assembly