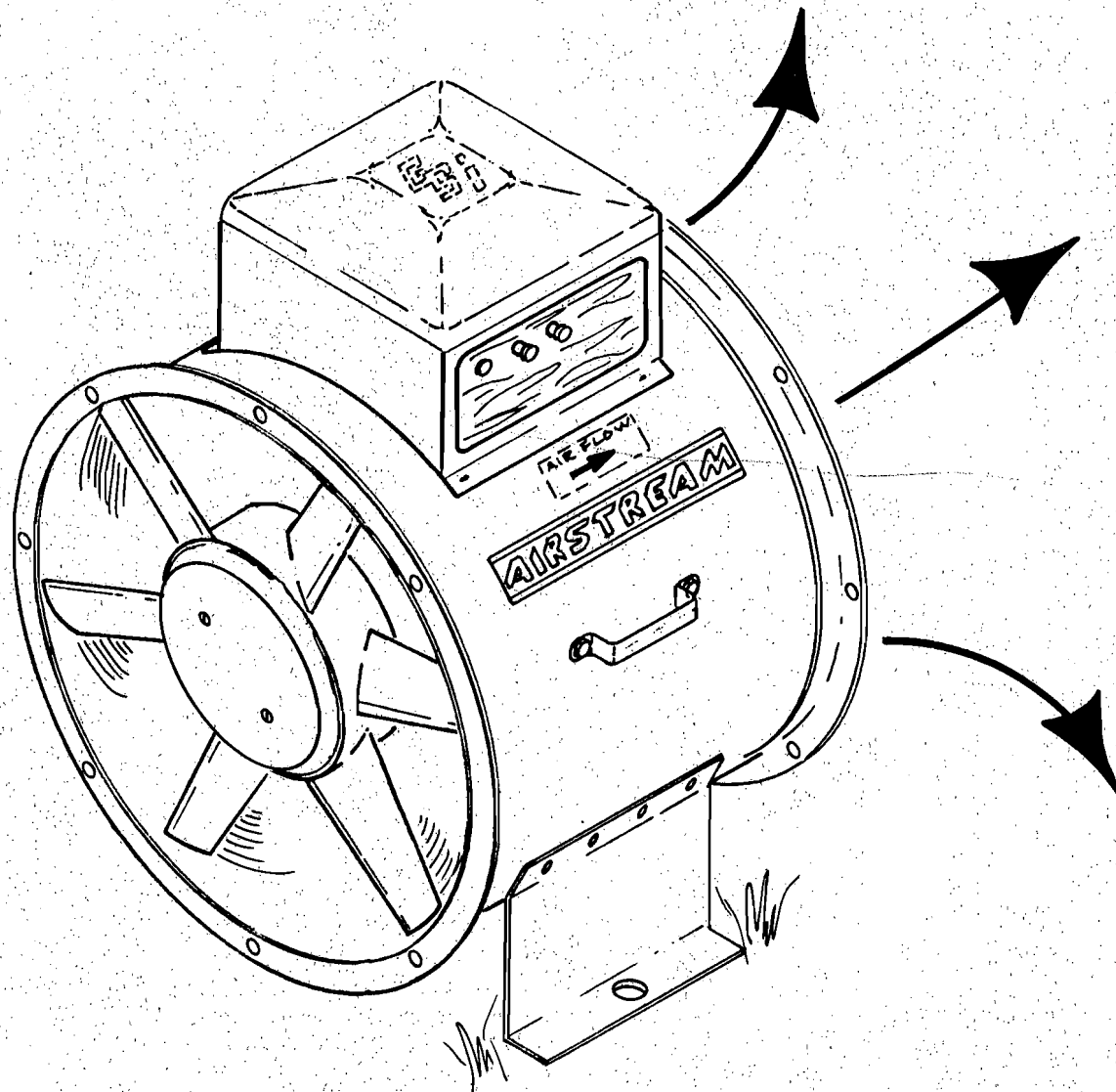


AIRSTREAM



TOP DRY SERIES FANS

MODEL No. S TF-2024-24"
TF-2028-28"
TF-2036-36"
TF-2042-42" 10-16 H.P.
TF-2042-42" 30 H.P.

OWNERS MANUAL



Grain Systems
Incorporated

ASSUMPTION, ILLINOIS 62510 • 217/ 226-4421

WARRANTY

GRAIN SYSTEMS, INC. warrants all products manufactured by GRAIN SYSTEMS, INC. to be free of defects in materials and workmanship under usual and customary service. GRAIN SYSTEMS, INC. only obligation is to repair or replace products returned on a prepaid basis within 12 months after retail sale, and, in our opinion, found to be defective due to material or workmanship. If defective, the product will be repaired or replaced without charge, F.O.B. factory, this constituting and fulfilling our warranty obligation. Expenses incurred without authorization of GRAIN SYSTEMS, INC. shall be the sole responsibility of the bearer. Under no circumstances will GRAIN SYSTEMS, INC. be liable for any kind of special or consequential damages, nor will the liability ever exceed the selling price of the product.

This warranty does not cover products or parts which have been damaged by negligent use, misuse, alteration or accident. All products supplied by outside manufacturers are warranted separately by the respective manufacturer. This warranty is exclusive and in lieu of all other warranties, expressed or implied. GRAIN SYSTEMS, INC. reserves the right to make design or specification changes at any time, without any contingent obligation to purchasers or products already sold.

All instructions shall be construed as recommendations only; because the actual installation may vary according to local conditions and GRAIN SYSTEMS, INC. assumes no liability for results arising from the use of such recommendations.

GRAIN SYSTEMS, INC. assumes no responsibility for field modifications or erection defects which create structural or storage quality problems. If any field modifications are necessary which are not specifically covered by the contents of this manual, contact GRAIN SYSTEMS, INC. for recommendations and approval. Any unauthorized modification or erection defect which effects the structural integrity of the G.S.I. bin will be cause for immediate nullification of the G.S.I. bin warranty.

ROOF DAMAGE WARNING

GRAIN SYSTEMS, INC. cannot warrant any roof damages due to excessive vacuum or internal pressure caused by fans or other air moving systems. Adequate ventilation and/or "make-up air" devices should be provided for all powered air handling systems. GRAIN SYSTEMS, INC. does not recommend the use of downward flow systems (suction). Severe roof structural damage can result from any blockage of air passages. Running of fans during certain high humidity/cold weather conditions can cause freezing over of air exhaust or intake ports.

CONTENTS

	PAGE
SPECIFICATIONS	1
FAN INSTALLATION	2
FAN SERVICE	2
TROUBLESHOOTING CHART	4
24" FAN PARTS	5
24" FAN 1 PHASE WIRING DIAGRAM	8
28" FAN PARTS	9
28" FAN 1 PHASE WIRING DIAGRAM	12
36" FAN PARTS	13
42" 10-16 H.P. FAN PARTS	14
36" AND 42" 10-16 H.P. FAN 1 PHASE WIRING DIAGRAM	17
42" 30 H.P. FAN PARTS	18
220 VOLT 3 PHASE WIRING DIAGRAM	20
440 VOLT 3 PHASE WIRING DIAGRAM	21

GENERAL SPECIFICATIONS

	TF-2024 9.75HP	TF-2028 10-15HP	TF-2036 10-16HP	TF-2042 10-16HP	TF-2042 30HP
LENGTH	20"	21"	24-1/2"	30-3/8"	30-3/8"
DIAMETER	24"	28"	36"	42"	42"
WEIGHT*	259/231	371/311	583/537	693/648	867
FAN H.P.	9.75	10-15	10-16	10-16	30
MOTOR SPEED	3500	3500	1750	1750	1750
FULL LOAD AMPS (1 PHASE)	48	55	83	83	--
FULL LOAD AMPS (3 PHASE 220 V)	25	38	42	42	74
FULL LOAD AMPS (3 PHASE 440 V)	13	19	21	21	37
CENTER LINE TO BOTTOM OF LEGS	15-3/8"	19-1/2"	25-1/4"	25-1/4"	25-1/4"
MINIMUM WIRING CONDUCTOR SIZE*					
50 FT. RUN	10/12	8/10	6/8	6/8	2
100 FT. RUN	6/10	4/6	2/4	2/4	2
200 FT. RUN	4/6	3/4	1/3	1/3	1
300 FT. RUN	2/4	1/3	0/2	0/2	0
FUSE SIZE FOR MOTOR BRANCH CIRCUIT PROTECTION (TIME DELAY)*	60/30	125/60	150/90	150/90	150

*GSI recommends that you contact your local power company and have a representative survey your installation so that your wiring will be compatible with their system and so that you will have adequate power supplied to your unit.

*Values given are for copper wire, if aluminum wire is used increase wire sizes by 2.

*First value given is for single phase units, second value is for three phase units.

FAN PERFORMANCE SPECIFICATIONS

	AIR VOLUME (CFM) AT INDICATED STATIC PRESSURE										
	1/2"	1"	1-1/2"	2"	2-1/2"	3"	3-1/2"	4"	4-1/2"	5"	5-1/2"
TF-2024	14850	14350	13800	13200	12400	11450	10150	7500	5350	4350	4000
TF-2028	18250	17300	16500	15600	14500	13600	12400	11100	9550	7350	5700
TF-2036	27000	26000	24400	22600	20600	18100	12600	10700	8000	6700	5800
TF-2042 (10-16HP)	38000	35000	32000	28500	24000	17500	14000	11000	8500	5000	2000
TF-2042 (30HP)	44500	43000	42000	40000	39000	37000	34500	31000	26200	17500	8000

FAN INSTALLATION

1. Top Dry series fans are designed primarily for use with Top Dry systems, although they are suitable for many other crop drying applications.
2. Install unit as shown in Top Dry manual. For any other type installations consult factory or your dealer for recommendations.
3. Be sure that adequate electrical supply is provided to operate the unit. Undersized wiring can cause overheating and thus shorten the life of the motor. Use wire size chart in specifications to determine wire size required.
4. On initial start up of fan, run it momentarily to make sure that the fan blade is rotating in the proper direction and air flow is correct.
5. A qualified electrician should make all fan installations.
6. It is very important that adequate exhaust opening is supplied to prevent structural damage to bin

FAN SERVICE

All Airstream fans are constructed of durable weather-resistant materials, so a minimum amount of service should be required; however before the unit is started for the first time each season there are a few items that need to be checked out. All damaged parts should be repaired or replaced.

1. Shut off and lock out all electrical power. Open control box lid and inspect all components for moisture, vibration, or rodent damage. Remove any accumulated foreign material present. Inspect and tighten all loose terminal connections. Replace any damaged wiring.
2. Remove grill guard and inspect propellor for freedom of rotation and uniform tip clearance. Inspect inside of hub for accumulated dirt or insect nests that may seriously affect the balance of the propellor and cause excessive vibration.
3. Check propellor for free side play. Any side play is an indication of defective motor bearings that should be replaced to prevent complete motor failure.

4. Motor bearings should be greased periodically depending upon usage. Under normal conditions it is a good idea to have motor serviced at an authorized service center every three to four seasons.

Note: It is important that motor bearings are greased with high quality motor bearing grease available from an authorized service center.

5. Check magnetic starter for dirt or other corrosion on contact points. If points show signs of wear they should be replaced.

FUNCTION OF FAN PARTS

PROPELLOR: Specially designed to move air through grain.

SPLIT TAPER BUSHING: Locks fan blade to motor shaft.

ELECTRIC MOTOR: Provides power and mounting for fan blade.

MOTOR CONTROL: Provides start and stop of fan.

RED LIGHT: Indicates that fan is running.

OVER LOADS: Kicks out motor controls in event of motor overload situation.

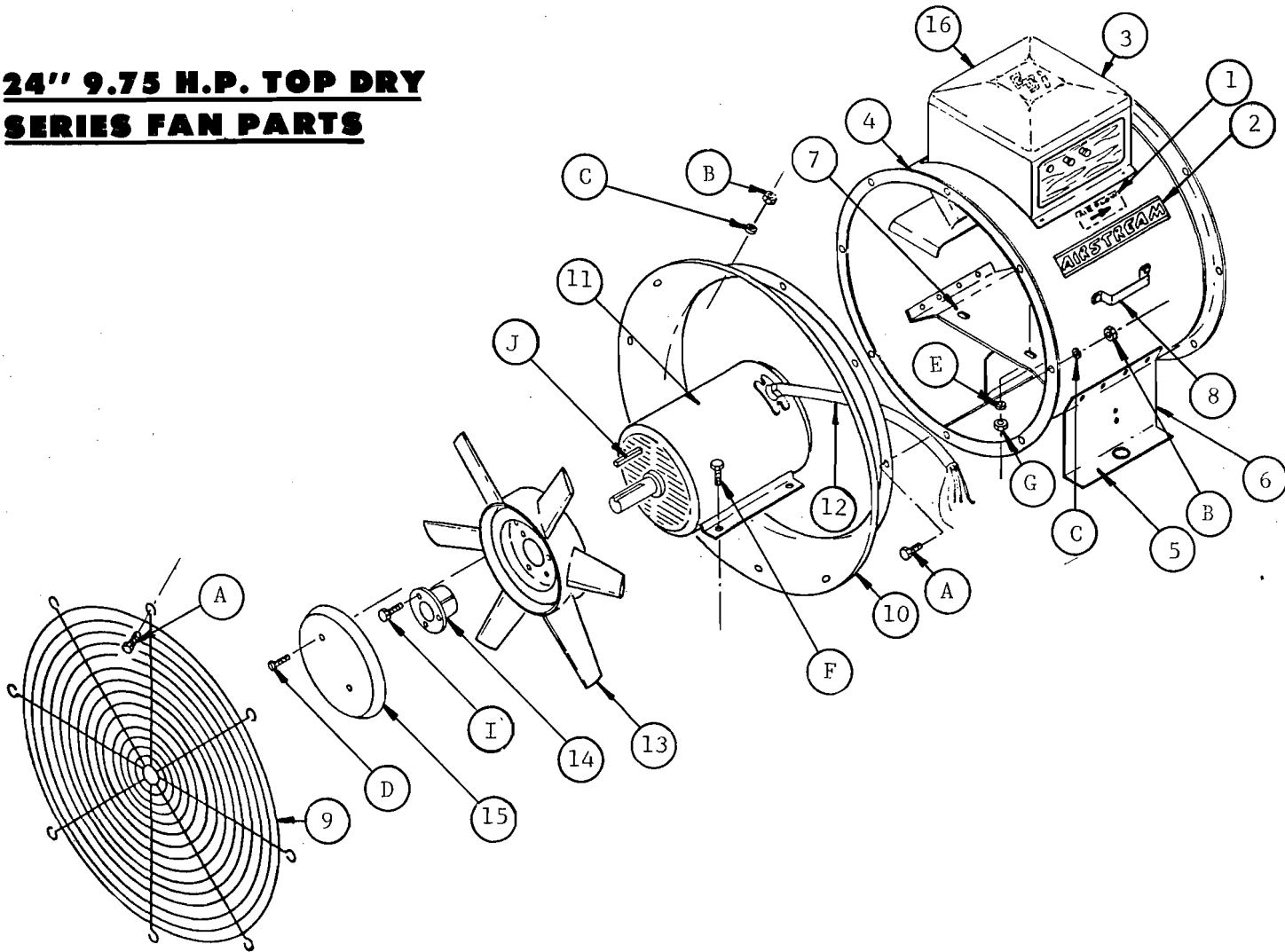
VENTURI: Increases efficiency of fan.

CAPACITORS: (SINGLE PHASE) Provide correct electrical characteristics for single phase motors

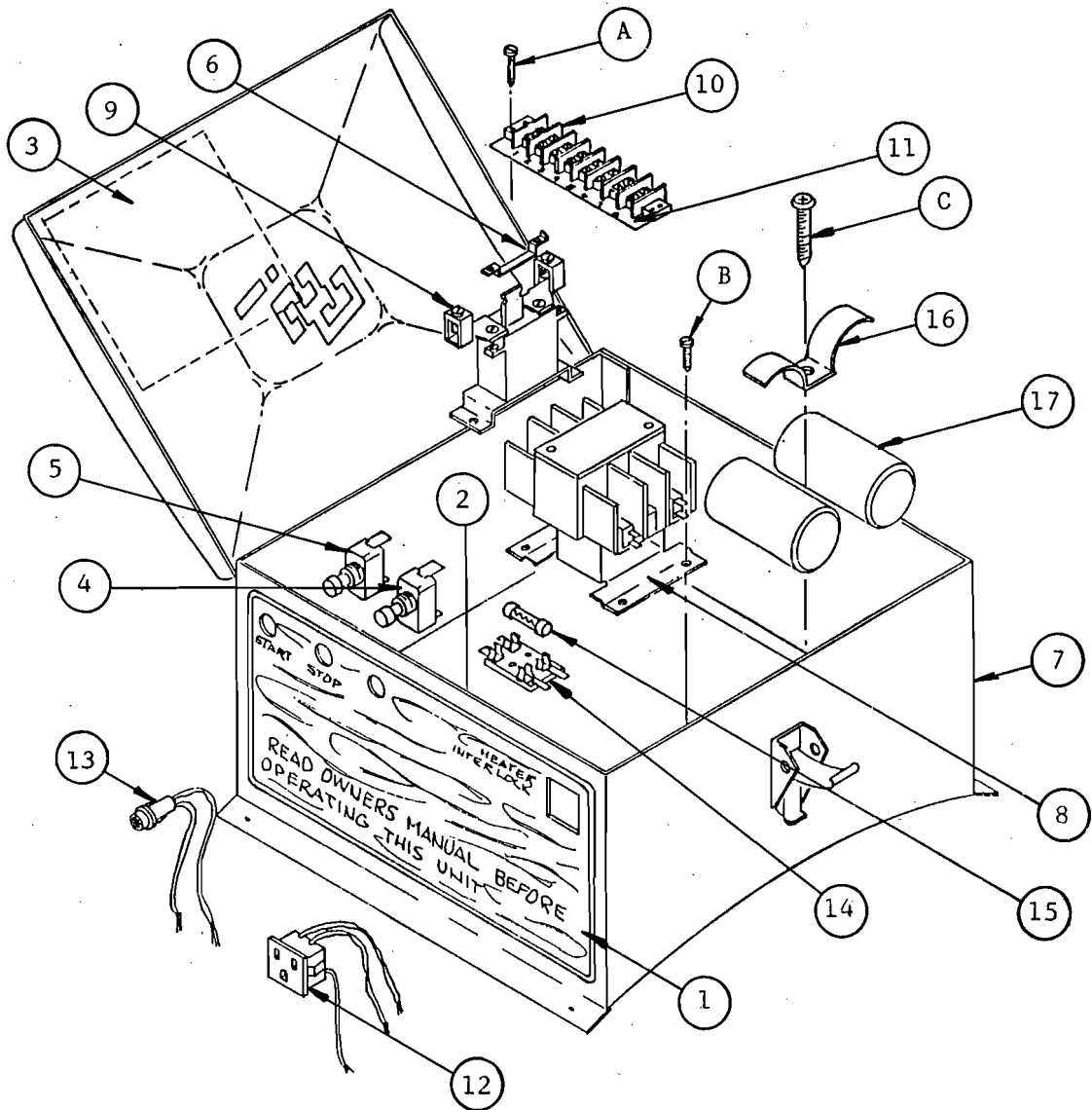
TROUBLESHOOTING CHART

TROUBLE	PROBABLE CAUSE	CHECK-OUT PROCEDURE AND CORRECTION
Motor starter chatters or does not close	Power supply	Check supply voltage across terminals L1 and L2 on single phase and L3 on three phase units. It should be within 10% of that shown on the motor nameplate. Inspect power for blown fuses etc. Call the power company.
	Start or stop switch or auxiliary contacts	Run an insulated jumper wire from terminals L1 to 3 on the motor starter. If contactor closes then problem is probably in the start or stop switch or the auxiliary contacts. Replace necessary parts.
	Open overload relay	push red or green reset button(s) on relay
	Overload relay	Run an insulated jumper wire from terminal L2 to pull in coil. Wire must go to the side of the coil that is connected to the overload relay. If contactor does close when start button is pressed then trouble is in the overload relay. Replace overload if defective.
	Motors with internal thermostat	Run an insulated jumper wire from L2 to the the overload relay Wire must go to the side of the overload relay that DOES NOT go the pull in coil. If contactor does not close trouble is in the motor internal protection. Replace defective part.
	Motor contactor	Connect power supply leads directly to motor leads, if motor runs properly the problem must be in the contactor. Replace necessary parts or complete contactor if defective.
Starter closes but fan runs slow and blows fuses or will not run at all.	Power supply	If fuses continue to blow during starting, check size and type. Use time delay type fuses. See "Specifications" for proper size.
	Power supply	Check voltage across terminals T1 and T2 on single phase and T3 on three phase after pushing start button. It should be within 10% of that shown on nameplate. Check wiring to unit to insure adequate voltage during starting.
	Contacts or contactor	If voltage is not as specified, but checked out all right on line side, then problem is probably in contacts or contactor. Replace defective parts.
	Motor connections	Check motor lead connections with that shown on the motor nameplate. Correct lead connection.
	Capacitors 1 phase	Check for evidence of capacitor overheating. Replace capacitors. Check for adequate starting voltage.
	Motor	Check for freedom of rotation and excessive bearing noise by turning fan blade by hand. Take motor to authorized service station.
Fan runs backwards	Wiring	Compare rotation with arrow on fan blade. Make certain motor lead connections are as shown on motor nameplate.
	Wiring	Compare rotation with arrow on fan blade. Interchange any two power leads (three phase motors only)
Fan vibrates	Mounting	Be sure fan is mounted securely to platform or pad.
	Fan blade	Check for dirt deposits or other irregularities that may cause fan to run out of balance. Correct problem or install new blade.
	Motor shaft	Check for bent motor shaft. If shaft is bent then take motor to authorized service center or replace motor.

**24" 9.75 H.P. TOP DRY
SERIES FAN PARTS**

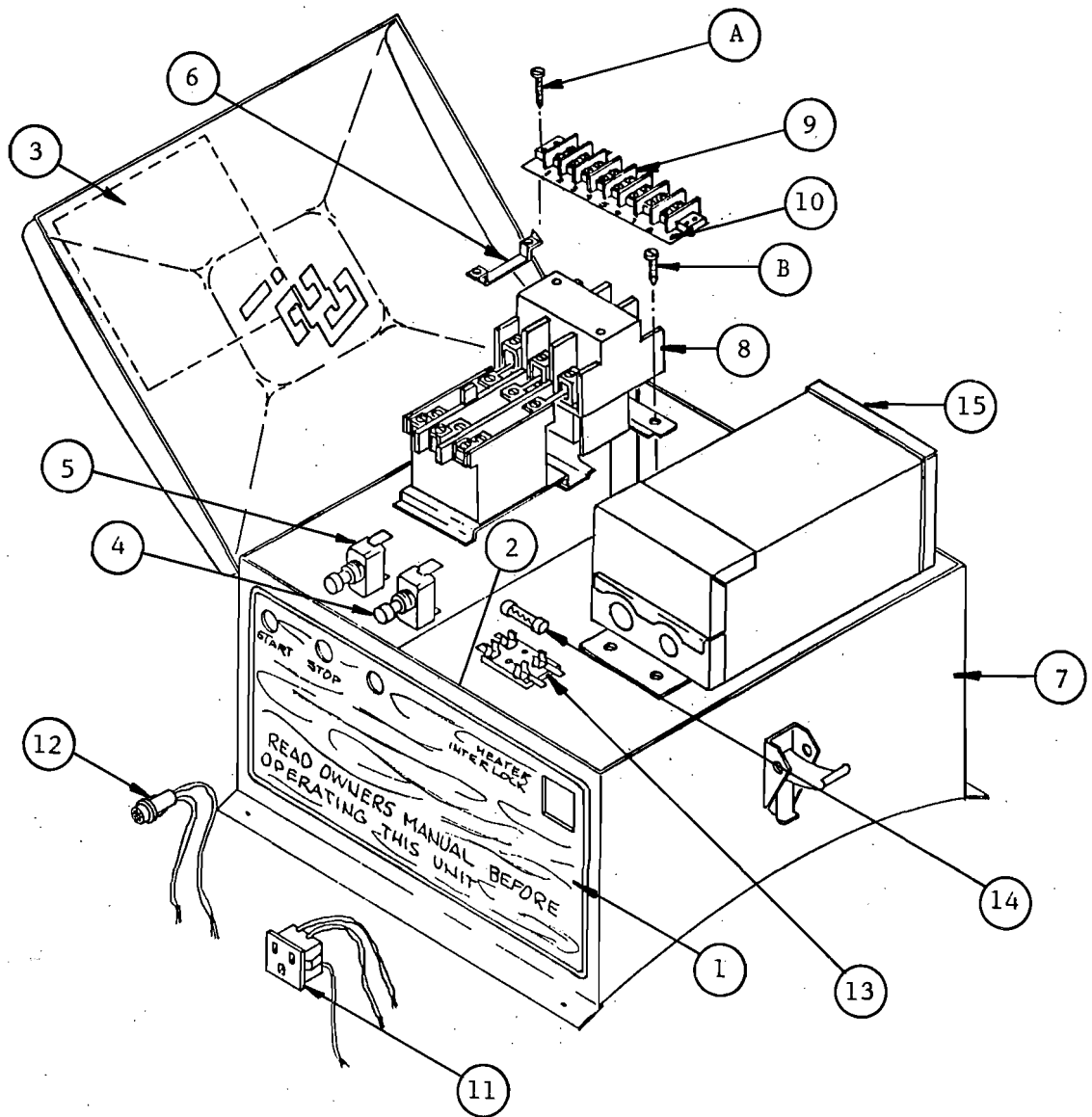


ITEM	PART NO.	DESCRIPTION	QUANTITY
1	DC-113	AIR FLOW DECAL	1
2	DC-159	AIRSTREAM DECAL	1
3	DC-163	IMPORTANT DECAL	1
4	F-1221	24" FAN CAN WELDMENT.	1
5	F-975	24" BASE MOUNT LEG.	2
6	F-976	24" BASE MOUNT STRAP.	1
7	F-974	24" MOTOR MOUNT	1
8	PR-331	PEAK CAP HANDLE	2
9	TFH-2015	24" GRILL GUARD	1
10	TFH-2016	24" VENTURI	1
11	FH-1005	9.75 H.P. 1 PHASE MOTOR	1
11	FH-1154	9.75 H.P. 3 PHASE MOTOR	1
12	FH-1006	3/4" PLASTIC HOSE	1
13	F-4737	24" 9.75 H.P. FINISHED BLADE.	1
14	FH-1009	P1 X 1-3/8" HUB	1
15	FH-1010	FAN BLADE CAP	1
16	TEBF-24-1	24" 1 PHASE ELECTRICAL BOX (1 PHASE).	1
16	TEBF-24-3	24" 3 PHASE ELECTRICAL BOX (220 VOLT)	1
16	TEBF-24-4	24" 3 PHASE ELECTRICAL BOX (440 VOLT)	1
STANDARD HARDWARE PARTS (PURCHASE LOCALLY)			
A	S-4275	5/16-18 X 3/4" BIN BOLT	20
B	S-396	5/16-18 NUT	20
C	S-1147	5/16" LOCKWASHER.	20
D	FH-1471	1/4-20 X 2-1/2" FLAT HEAD MACHINE SCREW	2
E	S-1054	3/8" LOCKWASHER	4
F	S-2071	3/8-16 X 1-1/4" BOLT.	4
G	S-456	3/8-16 NUT.	4
H	S-248	3/8" FLAT WASHER.	4
I	S-2741	5/16-18 X 1-1/2" GR. 5 BOLT	3
J	----	MOTOR KEY (SUPPLIED WITH MOTOR)	1



24" 9.75 H.P. CONTROL BOX PARTS 1 PHASE

ITEM	PART NO.	DESCRIPTION	QUANTITY
1	DC-160	DRYING FAN ELECTRICAL BOX DECAL	1
2	DC-115	HEATER FUSE DECAL	1
3	DC-337	WIRING DIAGRAM DECAL.	1
4	FH-1000	STOP SWITCH	1
5	FH-999	START SWITCH.	1
6	CH-1033	E-76 HEATER STRIP	1
7	F-1386	24" FAN CONTROL BOX WELDMENT.	1
8	FH-2721	42DE CONTACT BLOCK.	1
9	CH-1027	48GA OVERLOAD RELAY	1
10	TFH-2013	TERMINAL STRIP.	1
11	TFH-2052	TERMINAL STRIP MARKER	1
12	FH-1052	HEATER INTERLOCK RECEPTACLE	1
13	FH-1004	RED NEON LIGHT.	1
14	FH-1058	FUSE BLOCK.	1
15	FH-1059	5 AMP FUSE.	2
16	F-747	CAPACITOR RETAINER CLIP	1
17	-----	START CAPACITORS (BALDOR)	AR
		STANDARD HARDWARE PARTS (PURCHASE LOCALLY)	
A	FH-2609	8-32 X 5/8" SHEET METAL SCREW	4
B	S-1040	8-32 X 1/4" SHEET METAL SCREW	6
C	S-2605	1/4-20 X 1-1/4" SHEET METAL SCREW	1

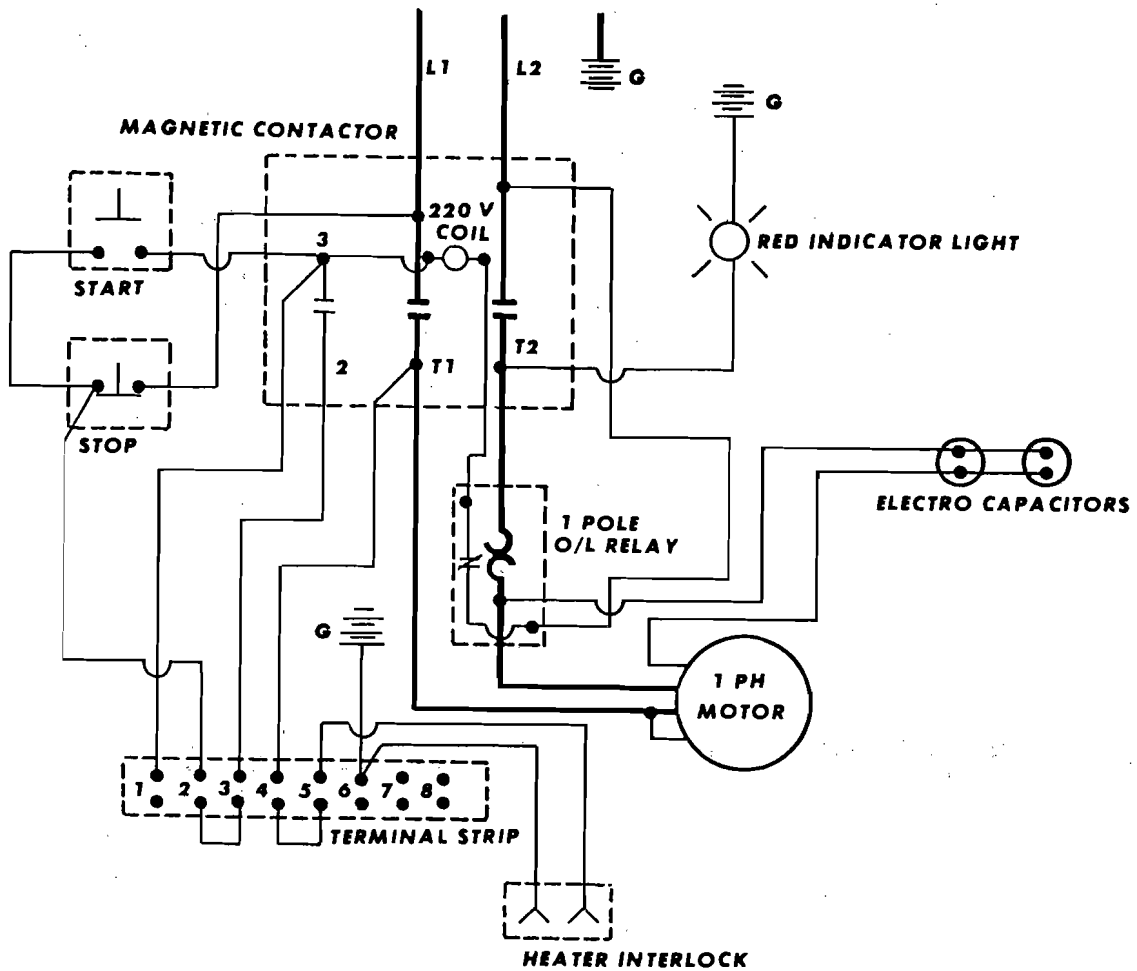


24" 9.75 H.P. CONTROL BOX PARTS 3 PHASE

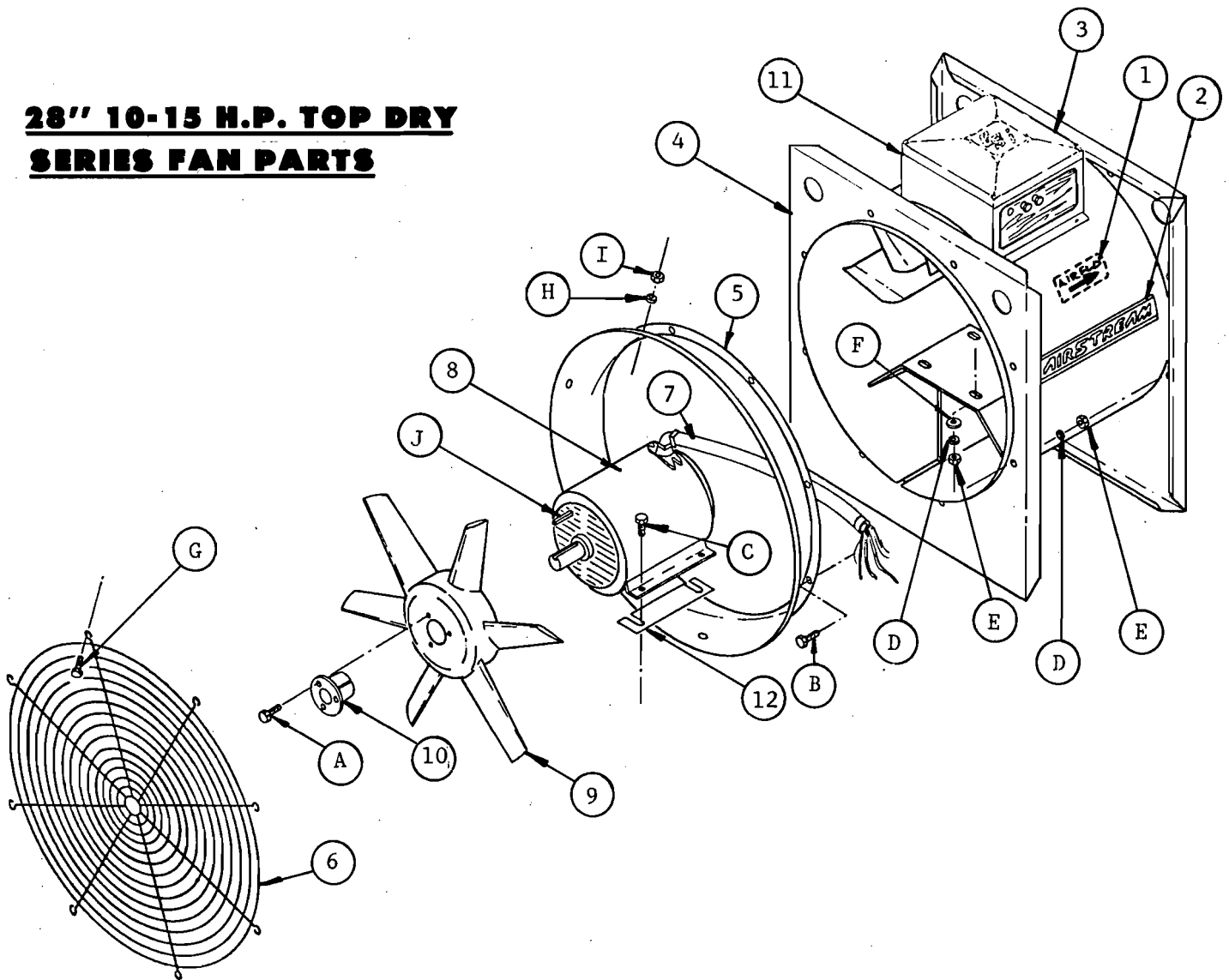
ITEM	PART NO.	DESCRIPTION	QUANTITY
1	DC-160	DRYING FAN ELECTRICAL BOX DECAL	1
2	DC-115	HEATER FUSE DECAL	1
3	DC-333	WIRING DIAGRAM DECAL.	1
4	FH-1000	STOP SWITCH	1
5	FH-999	START SWITCH.	1
6	FH-2608	E-70 HEATSTRIP.	3
7	F-1386	24" FAN CONTROL BOX WELDMENT.	1
8	CH-1151	16BE MAGNETIC STARTER	1
9	TFH-2013	TERMINAL STRIP.	1
10	TFH-2052	TERMINAL STRIP MARKER	1
11	FH-1052	HEATER INTERLOCK RECEPTACLE	1
12	FH-1004	RED NEON LIGHT.	1
13	FH-1058	FUSE BLOCK.	1
14	FH-1059	5 AMP FUSE.	1
15	TF-1056	440 TO 220 VOLT TRANSFORMER (440V ONLY)	1
		STANDARD HARDWARE PARTS (PURCHASE LOCALLY)	
A	FH-2609	8-32 X 5/8" SHEET METAL SCREW	4
B	S-1040	8-32 X 1/4" SHEET METAL SCREW	3

220 VOLT 1 PHASE WIRING DIAGRAM

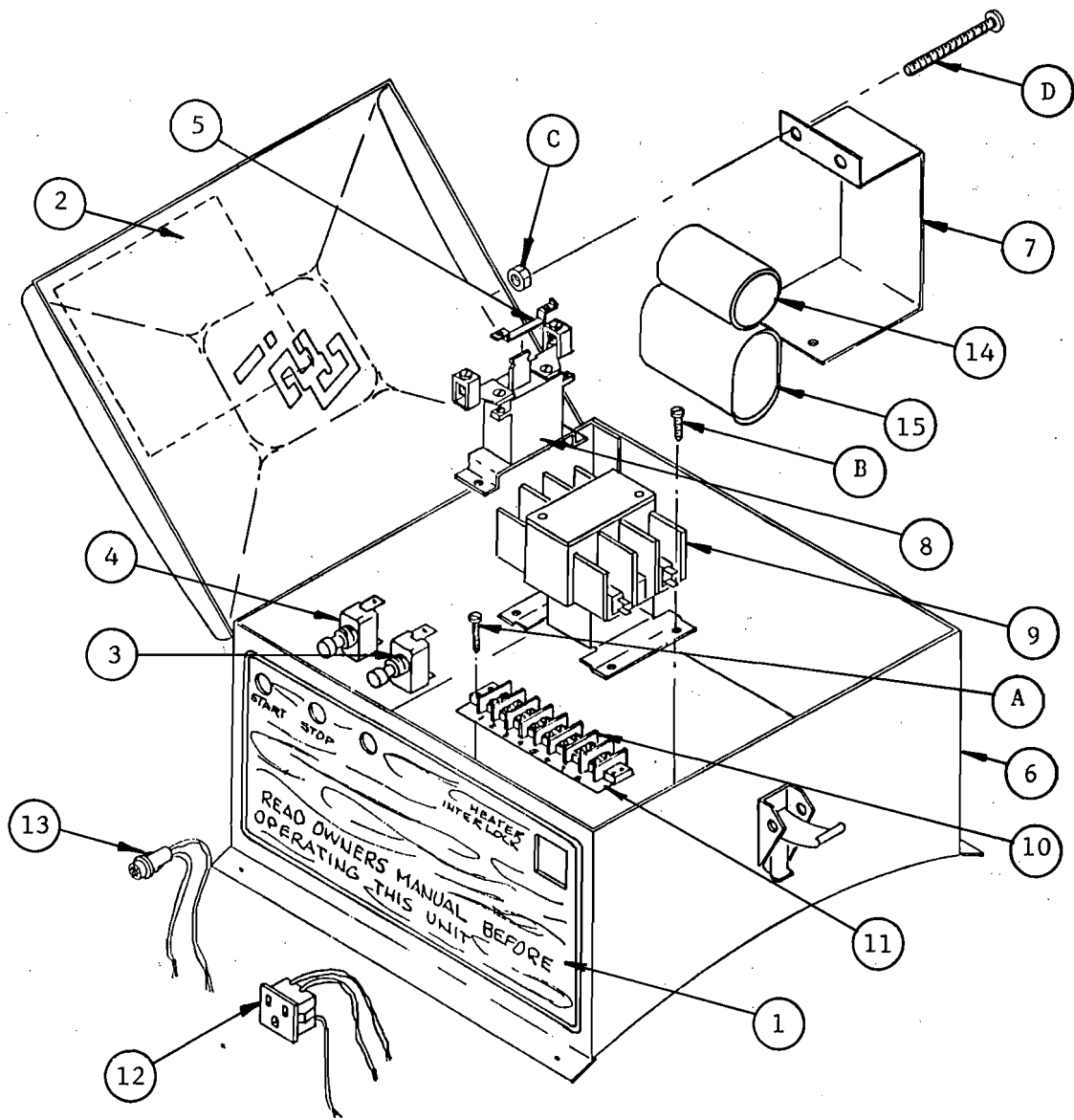
**24" TOP DRY FAN
(9.75 H.P. 3400 RPM BALDOR MOTOR)**



28" 10-15 H.P. TOP DRY
SERIES FAN PARTS

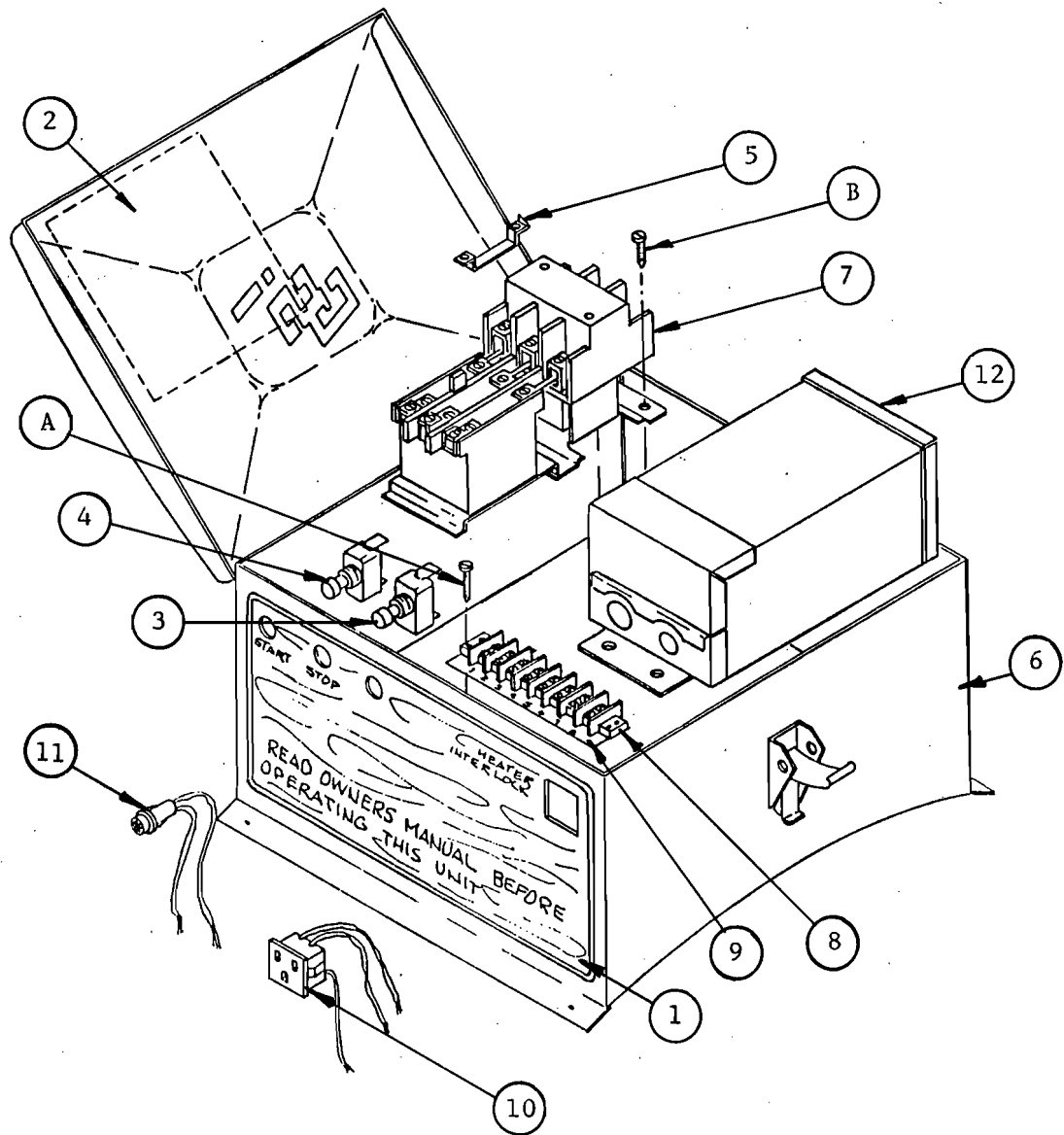


ITEM	PART NO.	DESCRIPTION	QUANTITY
1	DC-113	AIR FLOW DECAL.	1
2	DC-159	AIRSTREAM DECAL	1
3	DC-163	IMPORTANT DECAL	1
4	TF-1092	28" FAN HOUSING WELDMENT.	1
5	TF-1108	28" VENTURI	1
6	TFH-2007	28" GRILL GUARD	1
7	TF-1103	28" FAN SEAL-TITE ASSEMBLY.	1
8	TFH-2051	10-15 H.P. 3 PHASE MOTOR.	1
8	TFH-2050	10-15 H.P. 1 PHASE MOTOR.	1
9	TF-1102	28" FAN BLADE FINISHED.	1
10	TFH-2022	P2 X 1-3/8" HUB	1
11	TEBF-28-1	28" 1 PHASE ELECTRICAL BOX (1 PHASE).	1
11	TEBF-28-3	28" 3 PHASE ELECTRICAL BOX (220 VOLT)	1
11	TEBF-28-4	28" 3 PHASE ELECTRICAL BOX (440 VOLT)	1
12	TF-1109	10-15 H.P. MOTOR SHIM	AR
STANDARD HARDWARE PARTS (PURCHASE LOCALLY)			
A	S-2741	5/16-18 X 1-1/2" GR. 5 BOLT	3
B	S-455	3/8-16 X 1" BIN BOLT.	8
C	S-3727	3/8-16 X 1-3/4" GR. 8 BOLT.	4
D	S-1054	3/8" LOCKWASHER	12
E	S-456	3/8-16 NUT.	12
F	S-248	3/8" FLAT WASHER.	4
G	S-275	5/16-18 X 3/4" BIN BOLT	8
H	S-1147	5/16" LOCKWASHER.	8
I	S-396	5/16-18 NUT	8
J	-----	MOTOR KEY (SUPPLIED WITH MOTOR)	1



28" 10-15 H.P. CONTROL BOX PARTS 1 PHASE

ITEM	PART NO.	DESCRIPTION	QUANTITY
1	DC-160	DRYING FAN ELECTRICAL BOX DECAL	1
2	DC-336	WIRING DIAGRAM DECAL.	1
3	FH-1000	STOP SWITCH	1
4	FH-999	START SWITCH.	1
5	FH-1499	E-78 HEATER STRIP	1
6	TF-1093	28" FAN CONTROL BOX WELDMENT.	1
7	TF-1096	CAPACITOR CLAMP HALF (BALDOR)	2
8	CH-1027	48GA OVERLOAD RELAY	1
9	CH-1038	42EE CONTACT BLOCK.	1
10	TFH-2013	TERMINAL STRIP.	1
11	TFH-2052	TERMINAL STRIP MARKER	1
12	FH-1052	HEATER INTERLOCK RECEPTACLE	1
13	FH-1004	RED NEON LIGHT.	1
14	-----	BALDOR START CAPACITORS (ELECTRO)	AR
15	-----	BALDOR RUN CAPACITORS (OIL)	AR
		STANDARD HARDWARE PARTS (PURCHASE LOCALLY)	
A	FH-2609	8-32 X 5/8" SHEET METAL SCREW	6
B	S-1040	8-32 X 1/4" SHEET METAL SCREW	8
C	S-1102	1/4-20 NUT.	2
D	S-4627	1/4-20 X 2-1/2" MACHINE SCREW	2

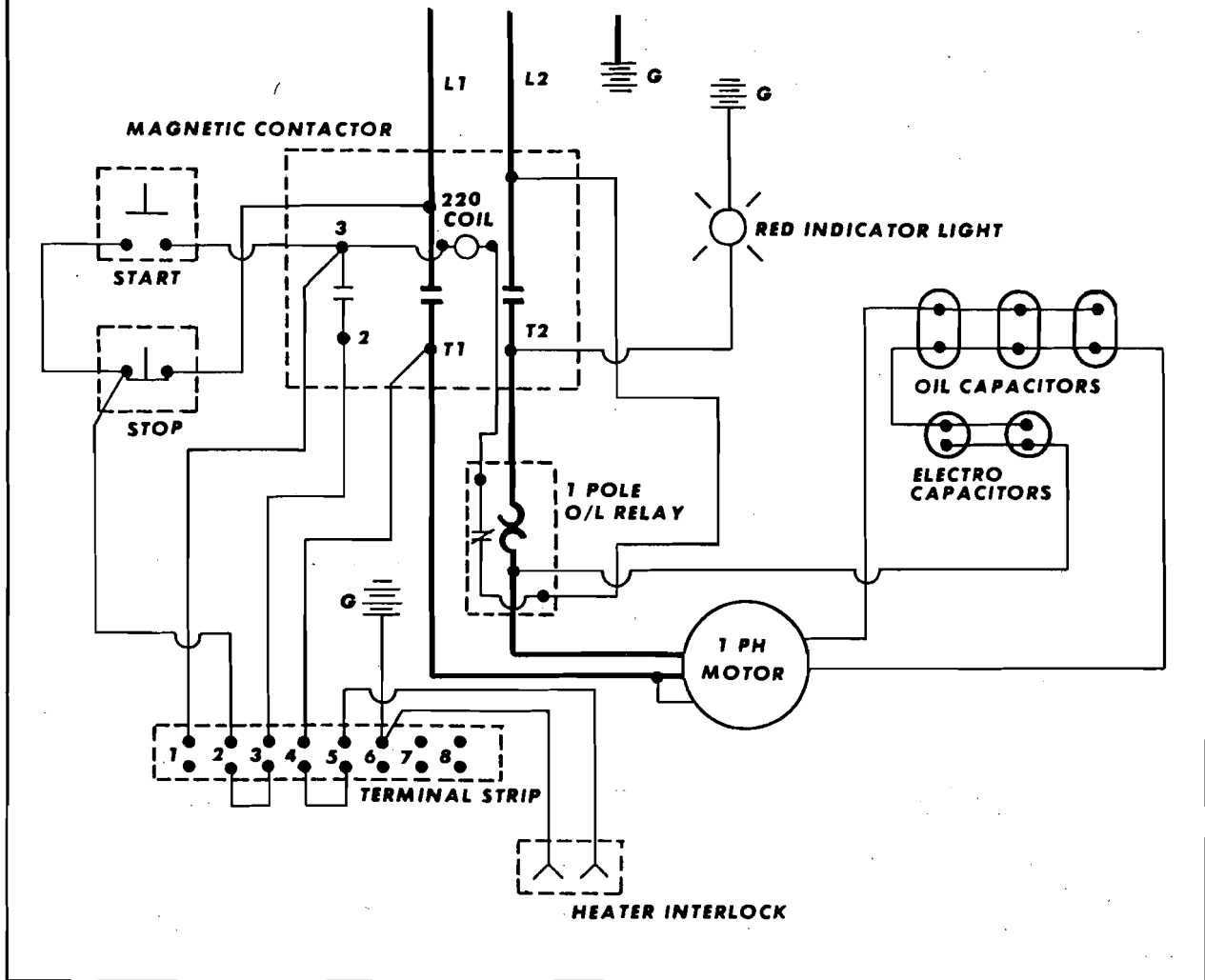


28" 10-15 H.P. CONTROL BOX PARTS 3 PHASE

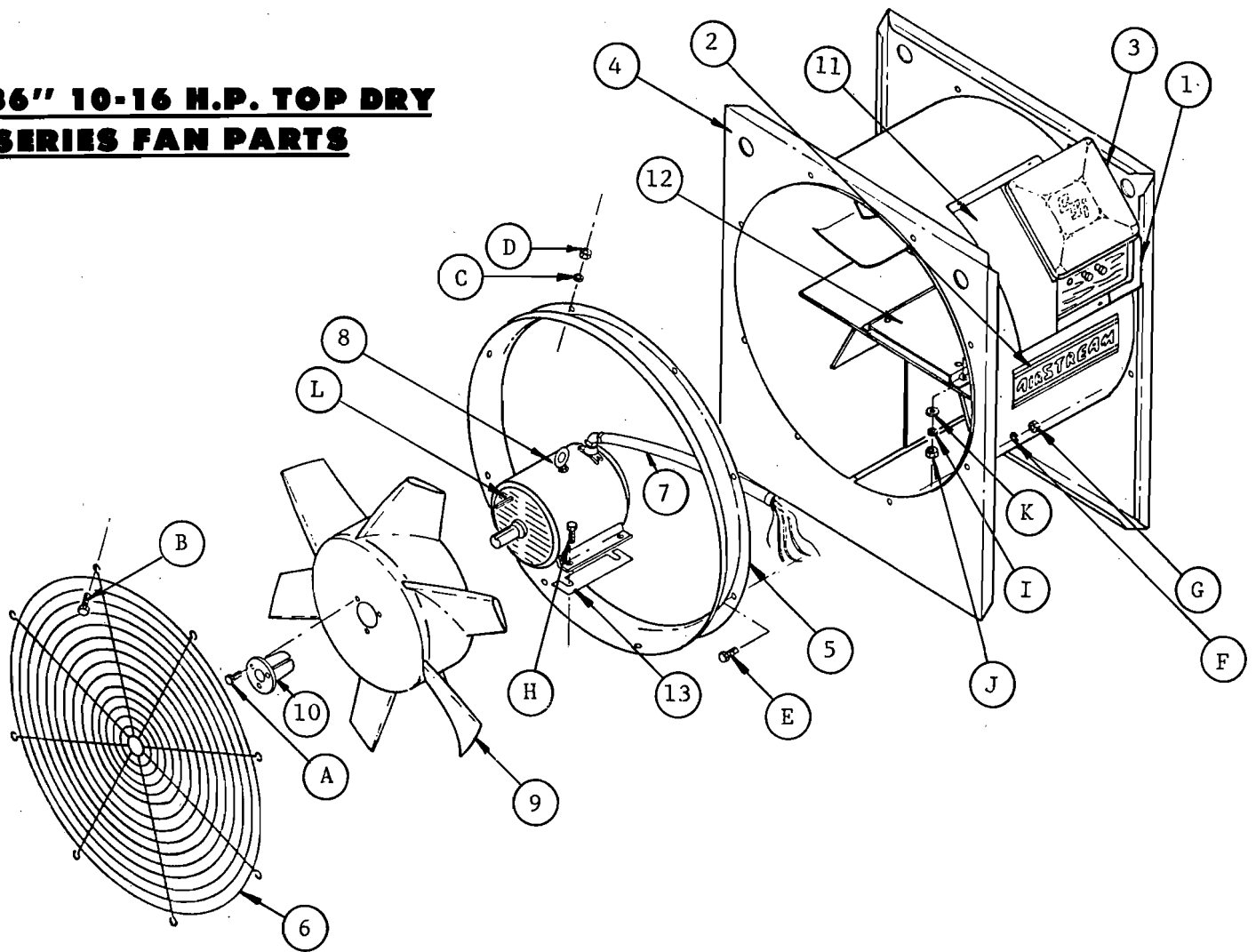
ITEM	PART NO.	DESCRIPTION	QUANTITY
1	DC-160	DRYING FAN ELECTRICAL BOX DECAL	1
2	DC-333	WIRING DIAGRAM DECAL.	1
3	FH-1000	STOP SWITCH	1
4	FH-999	START SWITCH.	1
5	CH-1030	E-73 HEATER STRIP	3
6	TF-1093	28" FAN CONTROL BOX WELDMENT.	1
7	CH-1150	16EE MAGNETIC STARTER	1
8	TFH-2013	TERMINAL STRIP.	1
9	TFH-2052	TERMINAL STRIP MARKER	1
10	FH-1052	HEATER INTERLOCK RECEPTACLE	1
11	FH-1004	RED NEON LIGHT.	1
12	TF-1056	440 VOLT TO 220 VOLT TRANSFORMER (440V ONLY).	1
		STANDARD HARDWARE ITEMS (PURCHASE LOCALLY)	
A	FH-2609	8-32 X 5/8" SHEET METAL SCREW	2
B	S-1040	8-32 X 1/4" SHEET METAL SCREW	3

220 VOLT 1 PHASE WIRING DIAGRAM

28" TOP DRY FAN
(10-15 H.P. 3400 RPM BALDOR MOTOR)

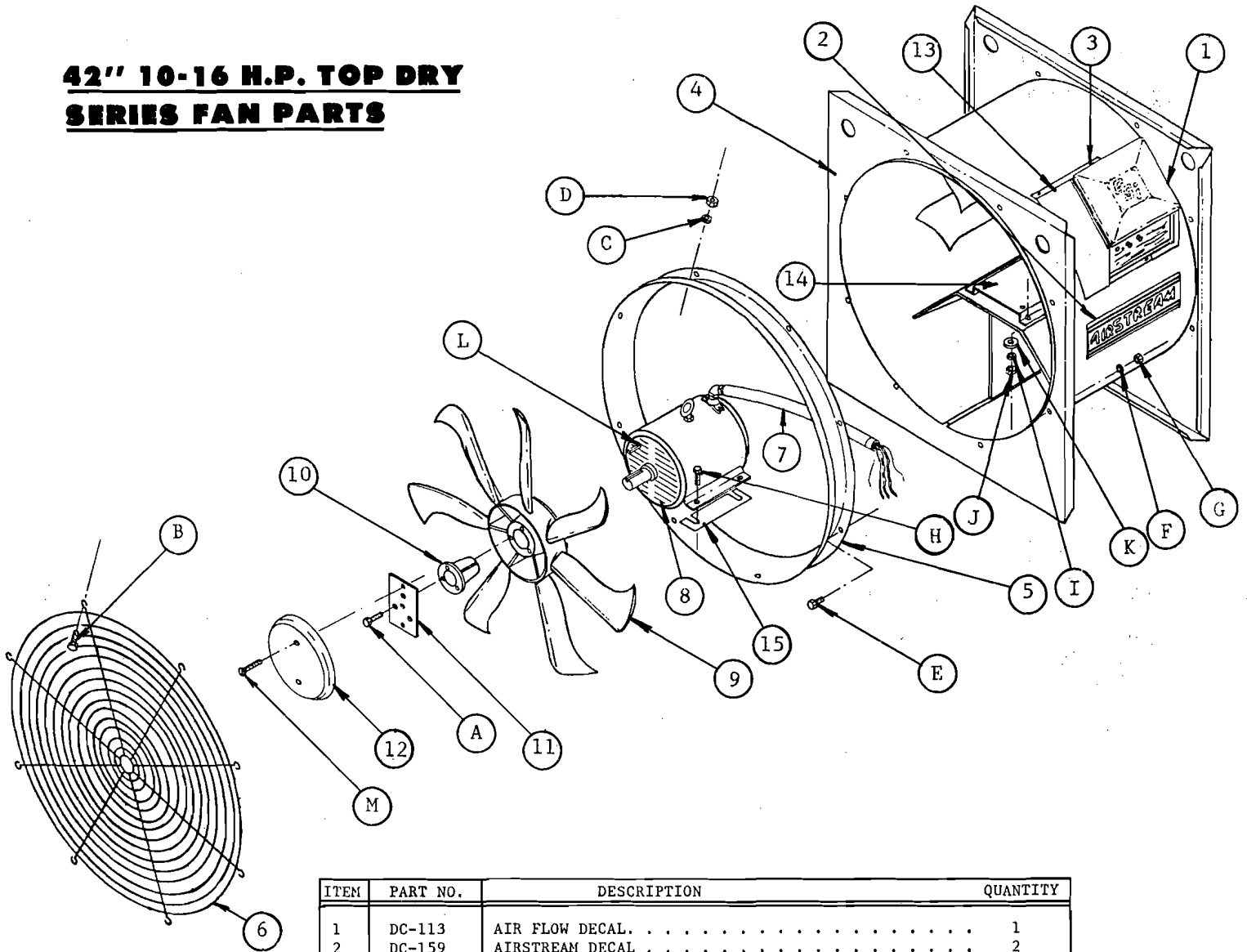


**36" 10-16 H.P. TOP DRY
SERIES FAN PARTS**

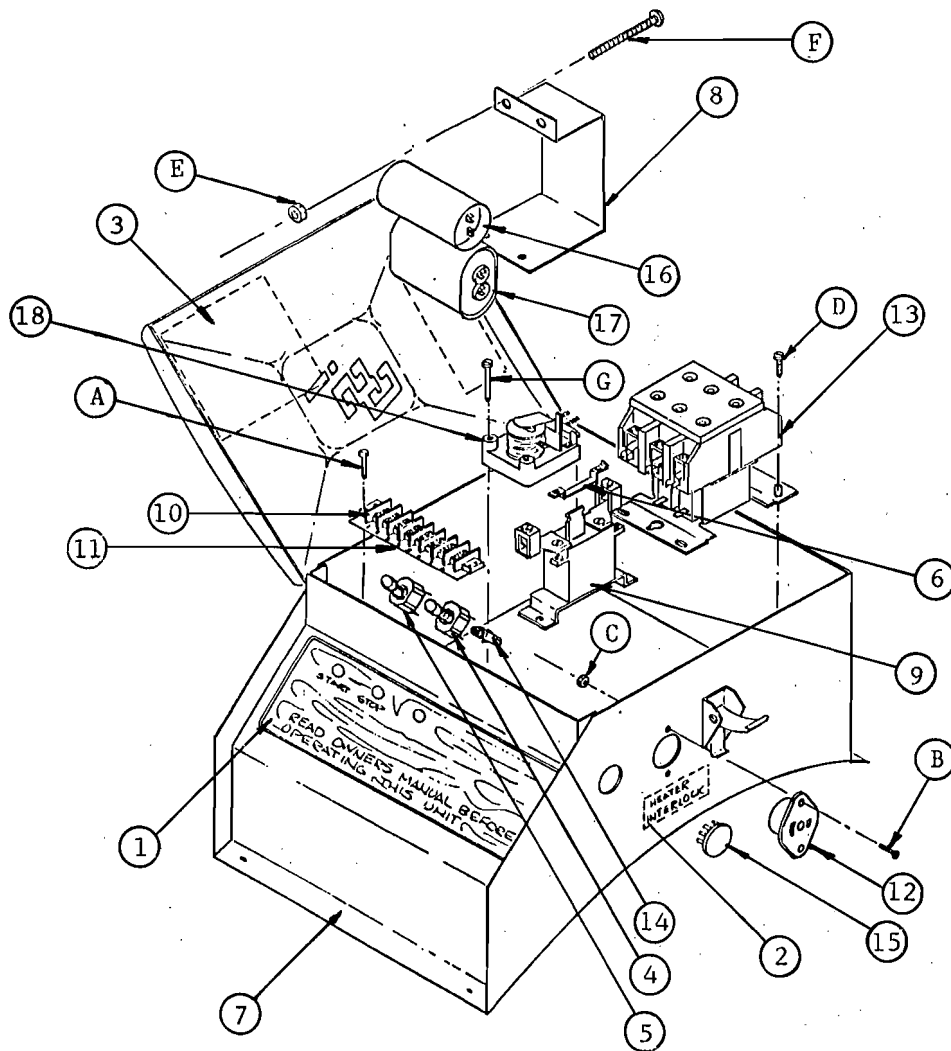


ITEM	PART NO.	DESCRIPTION	QUANTITY
1	DC-113	AIR FLOW DECAL.	1
2	DC-159	AIRSTREAM DECAL.	1
3	DC-163	IMPORTANT DECAL.	1
4	TF-1017	36" FAN HOUSING WELDMENT.	1
5	TF-1051	36" VENTURI	1
6	TFH-2002	36" GRILL GUARD	1
7	TF-1125	36" 3 PHASE SEAL-TITE ASSEMBLY.	1
7	TF-1052	36" 1 PHASE SEAL-TITE ASSEMBLY.	1
8	TFH-2010	10-16 H.P. 3 PHASE MOTOR.	1
8	TFH-2054	10-16 H.P. 1 PHASE MOTOR.	1
9	TF-1031	36" FAN BLADE FINISHED.	1
10	TFH-2022	P2 X 1-3/8" HUB	1
11	TEBF-36-1	36" 1 PHASE ELECTRICAL BOX (1 PHASE).	1
11	TEBF-36-3	36" 3 PHASE ELECTRICAL BOX (220 VOLT)	1
11	TEBF-36-4	36" 3 PHASE ELECTRICAL BOX (440 VOLT)	1
12	TF-1116	3 PHASE ADAPTER (3 PHASE ONLY).	1
13	TF-1037	10-16 H.P. MOTOR SHIM	AR
STANDARD HARDWARE PARTS (PURCHASE LOCALLY)			
A	S-2741	5/16-18 X 1-1/2" GR. 5 BOLT	3
B	S-275	5/16-18 X 3/4" BIN BOLT	8
C	S-1147	5/16" LOCKWASHER.	8
D	S-396	5/16-18 NUT	8
E	S-455	3/8-16 X 1" BIN BOLT.	8
F	S-1054	3/8" LOCKWASHER	8
G	S-456	3/8-16 NUT.	8
H	S-3883	1/2-13 X 1-3/4" BOLT.	4
I	S-236	1/2" LOCKWASHER	4
J	S-237	1/2-13 NUT.	4
K	-----	1/2" FLATWASHER	4
L	-----	MOTOR KEY (SUPPLIED WITH MOTOR)	1

**42" 10-16 H.P. TOP DRY
SERIES FAN PARTS**

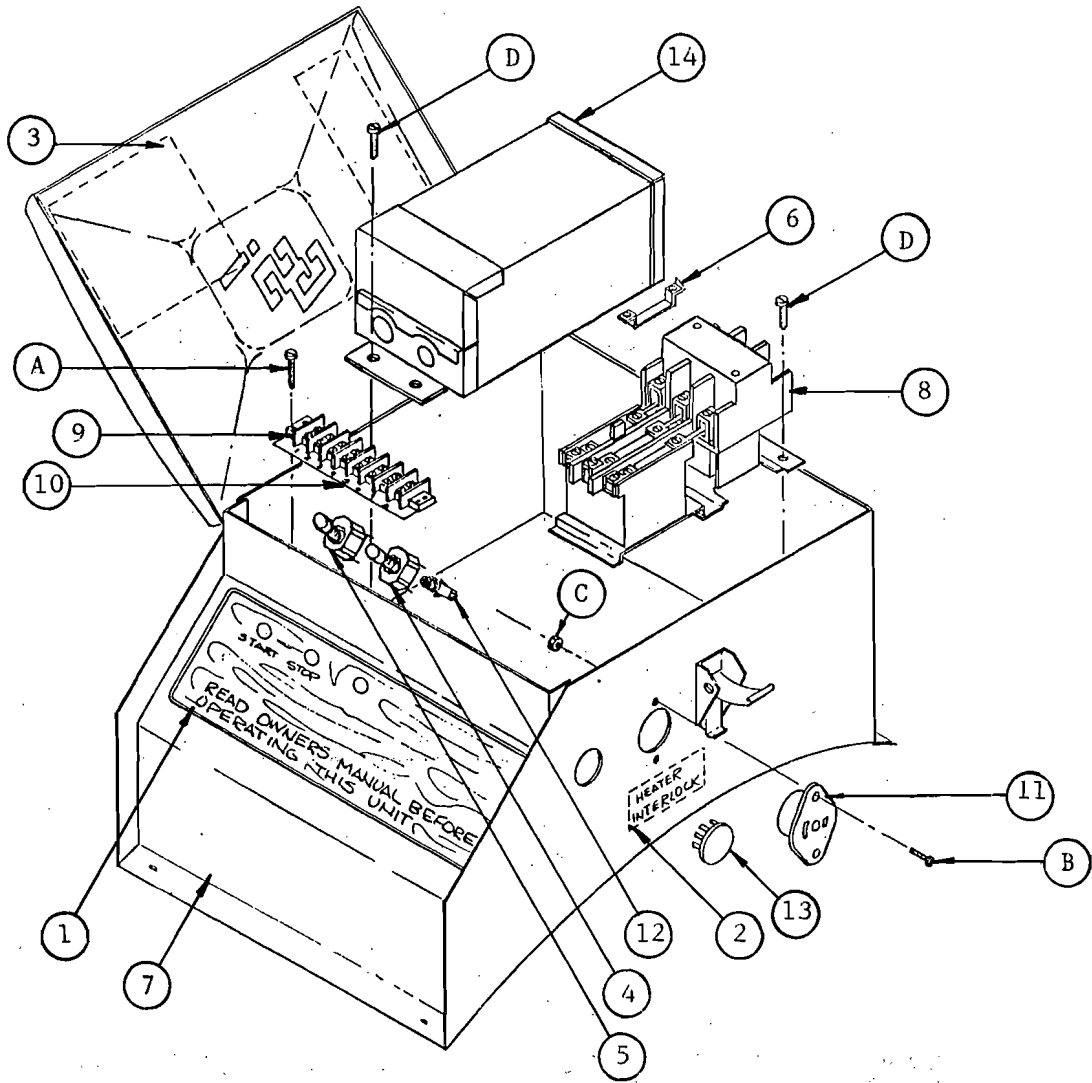


ITEM	PART NO.	DESCRIPTION	QUANTITY
1	DC-113	AIR FLOW DECAL.	1
2	DC-159	AIRSTREAM DECAL	2
3	DC-163	IMPORTANT DECAL	1
4	TF-1121	42" 10-16 H.P. FAN HOUSING WELDMENT	1
5	TF-1082	42" VENTURI	1
6	TFH-2003	42" GRILL GUARD	1
7	TF-1124	42" 10-16 H.P. 1PH FAN SEAL-TITE ASSEMBLY	1
7	TF-1089	42" 10-16 H.P. 3PH FAN SEAL-TITE ASSEMBLY	1
8	TFH-2054	10-16 H.P. 1 PHASE MOTOR.	1
8	TFH-2010	10-16 H.P. 3 PHASE MOTOR.	1
9	TF-1090	42" 10-16 H.P. FAN BLADE FINISHED	1
10	TFH-2022	P2 X 1-3/8" HUB	1
11	TF-1117	HUB CAP MOUNTING BRACKET.	1
12	FH-1108	BLADE HUB CAP	1
13	TEBF-42-1	42" 10-16 H.P. 1 PHASE ELECTRICAL BOX (1 PHASE)	1
13	TEBF-42-3	42" 10-16 H.P. 3 PHASE ELECTRICAL BOX (220 VOLT).	1
13	TEBF-42-4	42" 10-16 H.P. 3 PHASE ELECTRICAL BOX (440 VOLT).	1
14	TF-1116	3 PHASE ADAPTER (3 PHASE ONLY).	1
15	TF-1037	10-16 H.P. MOTOR SHIM	AR
STANDARD HARDWARE PARTS (PURCHASE LOCALLY)			
A	S-2741	5/16-18 X 1-1/2" GR.5 BOLT.	3
B	S-275	5/16-18 X 3/4" BINBOLT.	8
C	S-1147	5/16" LOCKWASHER.	8
D	S-396	5/16-18 NUT	8
E	S-455	3/8-16 X 1" BIN BOLT.	8
F	S-1054	3/8" LOCKWASHER	8
G	S-456	3/8-16 NUT.	8
H	S-3883	1/2-13 X 1-3/4" BOLT.	4
I	S-236	1/2" LOCKWASHER	4
J	S-237	1/2-13 NUT.	4
K	-----	1/2" FLATWASHER	4
L	-----	MOTOR KEY (SUPPLIED WITH MOTOR)	1
M	HH-1830	1/4-20 X 1-1/2" FLAT HEAD MACHINE SCREW	2



36" & 42" 10-16 H.P. CONTROL BOX PARTS 1 PHASE

ITEM	PART NO.	DESCRIPTION	QUANTITY
1	DC-325	TOP DRY FAN ELECTRICAL BOX DECAL.	1
2	DC-331	HEATER INTERLOCK DECAL.	1
3	DC-332	WIRING DIAGRAM DECAL.	1
4	FH-1000	STOP SWITCH	1
5	FH-999	START SWITCH.	1
6	FH-3167	E-80 HEATER STRIP	1
7	TF-1029	36" FAN CONTROL BOX WELDMENT.	1
7	TF-1069	42" 16 H.P. FAN CONTROL BOX WELDMENT.	1
8	TF-1096	CAPACITOR CLAMP HALF (BALDOR)	2
9	TFH-2012	OVER LOAD RELAY	1
10	TFH-2013	TERMINAL STRIP.	1
11	TFH-2052	TERMINAL STRIP MARKER	1
12	TFH-2014	HEATER INTERLOCK RECEPTACLE	1
13	TFH-2018	75 AMP CONTACT BLOCK.	1
14	TFH-2021	RED NEON LIGHT (NO LEADS)	1
15	TFH-2048	7/8" DIA. HOLE PLUG	1
16	-----	BALDOR START CAPACITORS (ELECTRO)	AR
17	-----	BALDOR RUN CAPACITORS (OIL)	AR
18	-----	MOTOR START RELAY	1
		STANDARD HARDWARE ITEMS (PURCHASE LOCALLY)	
A	FH-2609	8-32 X 5/8" SHEET METAL SCREW	6
B	HH-1505	5-40 X 1/2" MACHINE SCREW	2
C	HH-1506	5-40 NUT.	2
D	S-1040	8-32 X 1/4" SHEET METAL SCREW	8
E	S-1102	1/4-20 NUT.	2
F	S-4627	1/4-20 X 2-1/2" MACHINE SCREW	2
G	S-4805	8-32 X 1-1/4" MACHINE SCREW	2

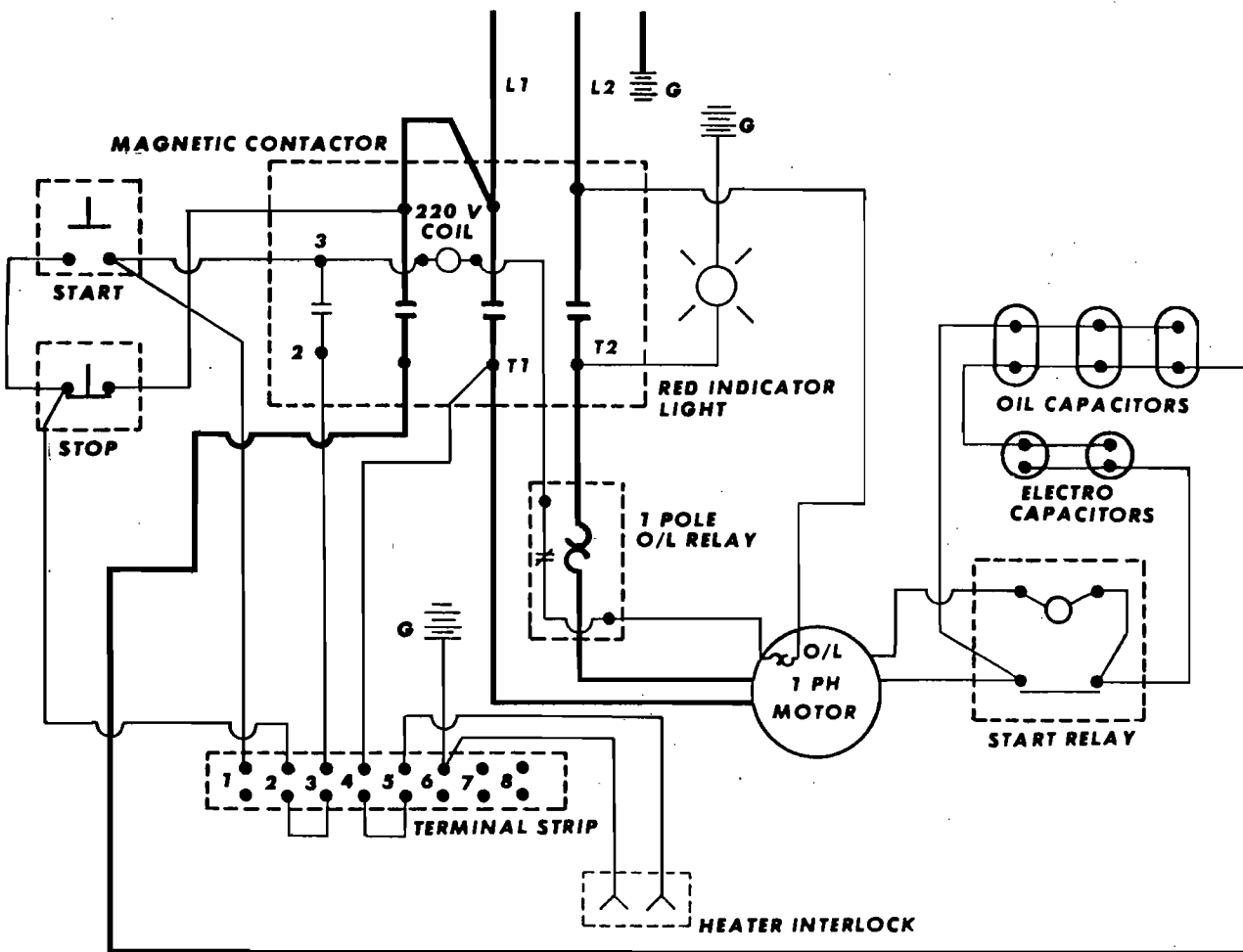


36" & 42" 10-16 H.P. CONTROL BOX PARTS 3 PHASE

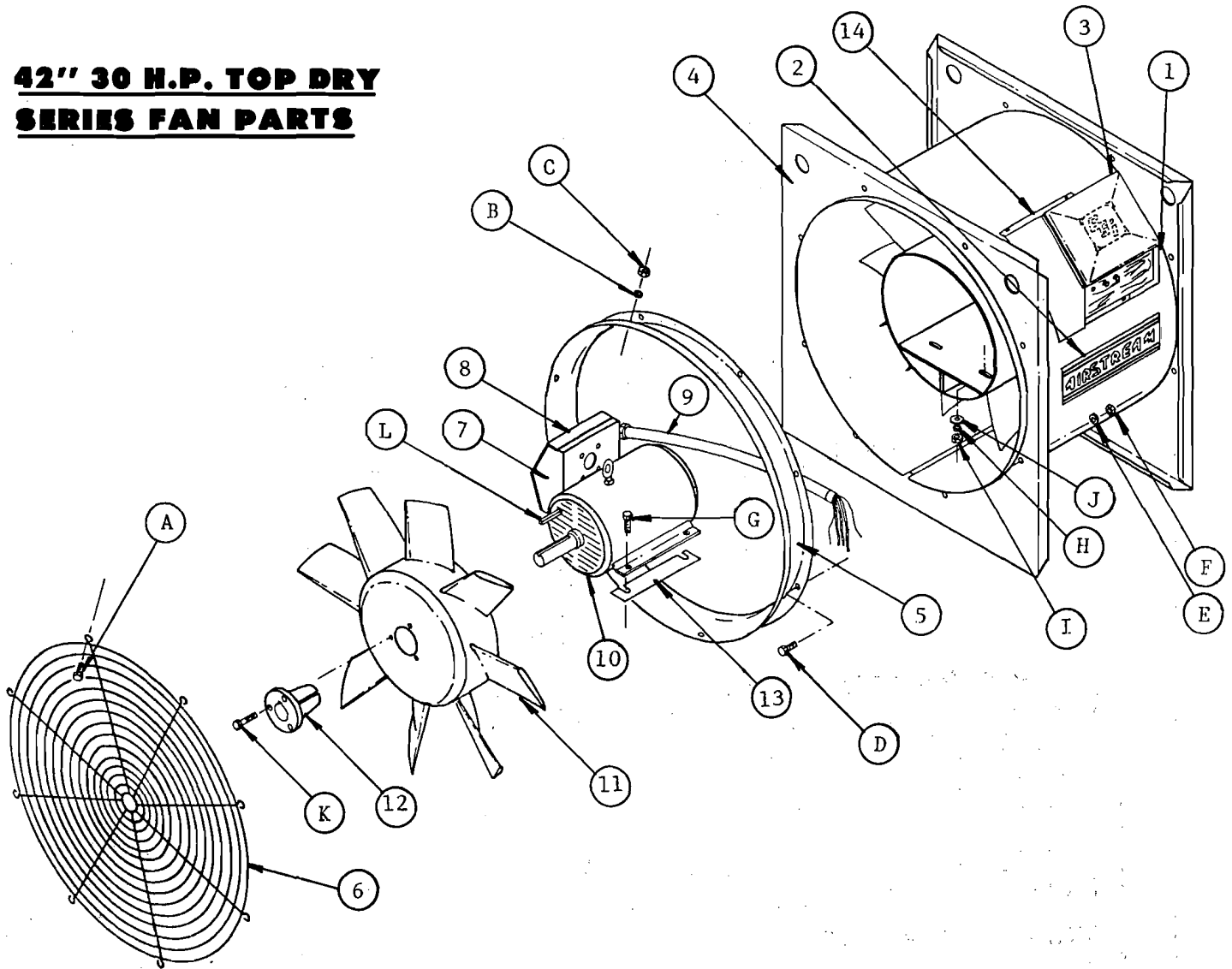
ITEM	PART NO.	DESCRIPTION	QUANTITY
1	DC-325	TOP DRY FAN ELECTRICAL BOX DECAL.	1
2	DC-331	HEATER INTERLOCK DECAL.	1
3	DC-333	WIRING DIAGRAM DECAL.	1
4	FH-1000	STOP SWITCH	1
5	FH-999	START SWITCH.	1
6	CH-1033	E-76 HEATER STRIP	3
7	TF-1029	36" FAN CONTROL BOX WELDMENT.	1
7	TF-1069	42" 16 H.P. FAN CONTROL BOX WELDMENT.	1
8	CH-1150	MAGNETIC STARTER.	1
9	TFH-2013	TERMINAL STRIP.	1
10	TFH-2052	TERMINAL STRIP MARKER	1
11	TFH-2014	HEATER INTERLOCK RECEPTACLE	1
12	TFH-2021	RED NEON LIGHT (NO LEADS)	1
13	TFH-2048	7/8" DIA. HOLE PLUG	1
14	TF-1056	440 TO 220 VOLT TRANSFORMER (440V ONLY)	1
STANDARD HARDWARE PARTS (PURCHASE LOCALLY)			
A	FH-2609	8-32 X 5/8" SHEET METAL SCREW	2
B	HH-1505	5-40 X 1/2" MACHINE SCREW	2
C	HH-1506	5-40 NUT.	2
D	S-1040	8-32 X 1/4" SHEET METAL SCREW	3

220 VOLT 1 PHASE WIRING DIAGRAM

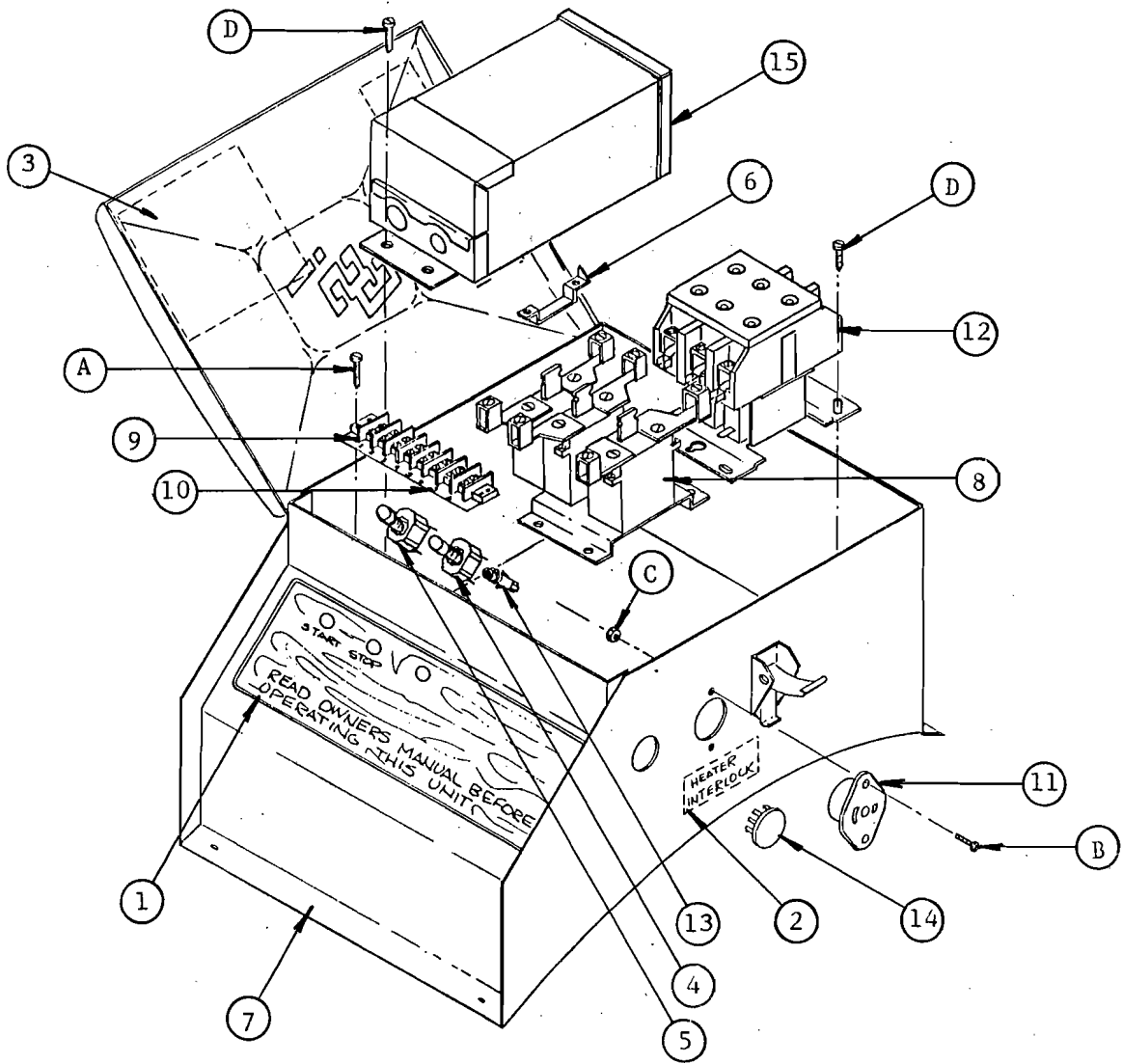
**36" & 42" TOP DRY FANS
(10-16 H.P. 1725 RPM BALDOR MOTOR)**



**42" 30 H.P. TOP DRY
SERIES FAN PARTS**



ITEM	PART NO.	DESCRIPTION	QUANTITY
1	DC-113	AIR FLOW DECAL.	1
2	DC-159	AIRSTREAM DECAL.	2
3	DC-163	IMPORTANT DECAL.	1
4	TF-1000	42" 30 H.P. FAN HOUSING WELDMENT.	1
5	TF-1082	42" VENTURI	1
6	TFH-2003	42" GRILL GUARD	1
7	TF-1011	42" FAN ELECTRIC BOX.	1
8	TF-1012	ELECTRIC BOX COVER.	1
9	TF-1088	42" 30 H.P. SEAL-TITE ASSEMBLY.	1
10	TFH-2011	30 H.P. 3 PHASE BALDOR MOTOR.	1
11	TF-1030	42" 30 H.P. FAN BLADE FINISHED.	1
12	TFH-2036	Q2 X 1-7/8" BROWNING HUB.	1
13	TF-1036	30 H.P. MOTOR SHIM.	AR
14	TEBF-42-33	30 H.P. ELECTRICAL BOX (220 VOLT)	1
14	TEBF-42-43	30 H.P. ELECTRICAL BOX (440 VOLT)	1
STANDARD HARDWARE PARTS (PURCHASE LOCALLY)			
A	S-275	5/16-18 X 3/4" BIN BOLT	8
B	S-1147	5/16" LOCKWASHER.	8
C	S-396	5/16-18 NUT	8
D	S-455	3/8-16 X 1" BIN BOLT.	8
E	S-1054	3/8" LOCKWASHER	8
F	S-456	3/8-16 NUT.	8
G	S-3883	1/2-13 X 1-3/4" BOLT.	4
H	S-236	1/2" LOCKWASHER	4
I	S-237	1/2-13 NUT.	4
J	-----	1/2" FLATWASHER	4
K	S-3727	3/8-16 X 1-3/4" GR 8 BOLT	3
L	-----	MOTOR KEY (SUPPLIED WITH MOTOR)	1

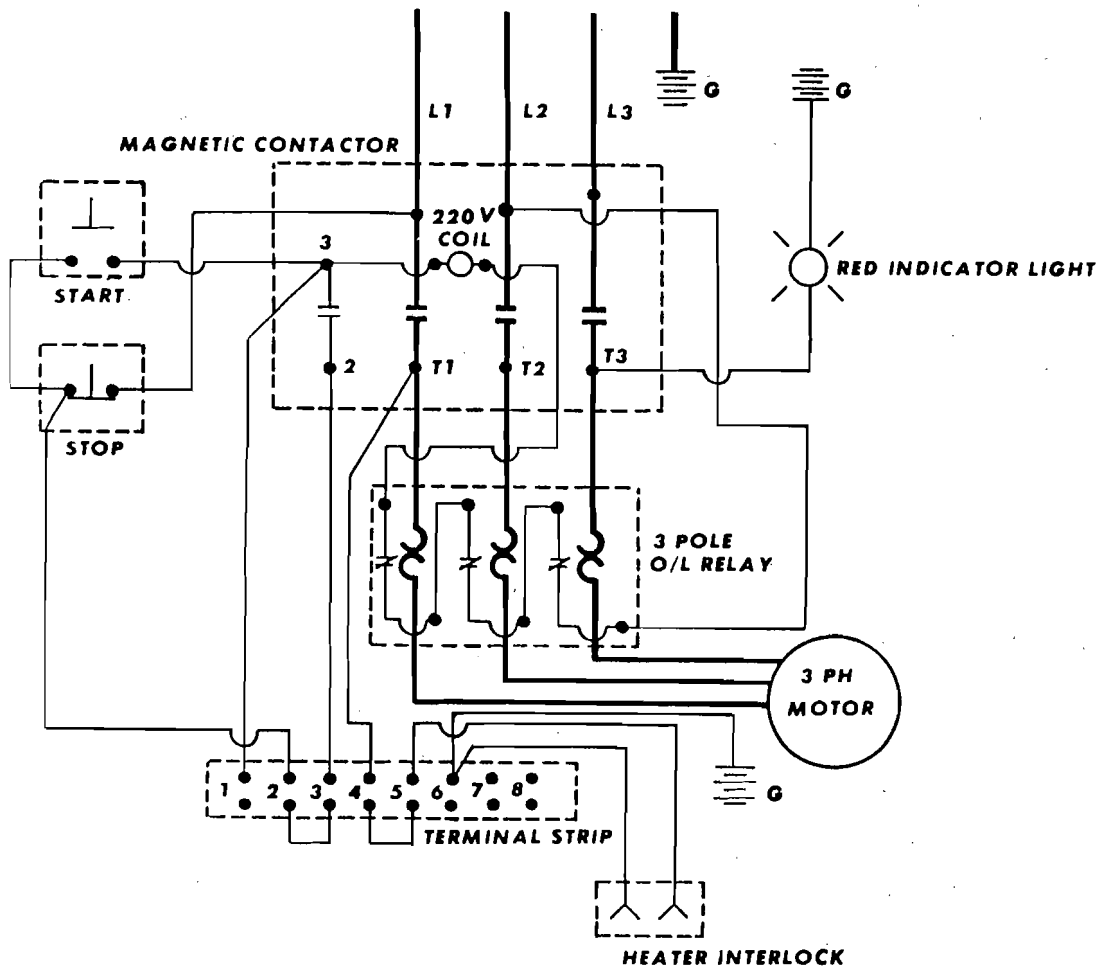


42" 30 H.P. CONTROL BOX PARTS

ITEM	PART NO.	DESCRIPTION	QUANTITY
1	DC-325	TOP DRY FAN ELECTRICAL BOX DECAL	1
2	DC-331	HEATER INTERLOCK DECAL	1
3	DC-333	WIRING DIAGRAM DECAL	1
4	FH-1000	STOP SWITCH.	1
5	FH-999	START SWITCH	1
6	FH-3167	E-80 HEATER STRIP.	3
7	TF-1014	42" 30 H.P. CONTROL BOX WELDMENT	1
8	TFH-2035	3 POLE OVER LOAD RELAY	1
9	TFH-2013	TERMINAL STRIP	1
10	TFH-2052	TERMINAL STRIP MARKER.	1
11	TFH-2014	HEATER INTERLOCK RECEPTACLE	1
12	TFH-2018	75 AMP CONTACT BLOCK	1
13	TFH-2021	RED NEON LIGHT (NO LEADS).	1
14	TFH-2048	7/8" DIA. HOLE PLUG.	1
15	TF-1056	440 TO 220 VOLT TRANSFORMER (440V ONLY).	1
STANDARD HARDWARE PARTS (PURCHASE LOCALLY)			
A	FH-2609	8-32 X 5/8" SHEET METAL SCREW.	2
B	HH-1505	5-40 X 1/2" MACHINE SCREW.	2
C	HH-1506	5-40 NUT	2
D	S-1040	8-32 X 1/4" SHEET METAL SCREW.	7

220 VOLT 3 PHASE WIRING DIAGRAM

24", 28", 36" & 42" TOP DRY FANS
(BALDOR MOTORS)



440 VOLT 3 PHASE WIRING DIAGRAM

24", 28", 36" & 42" TOP DRY FANS
(BALDOR MOTORS)

