

Sampler

Model: GRE

Installation and Operation Manual

PNEG-2189

Version: 1.0

Date: 01-29-18



PNEG-2189

All information, illustrations, photos, and specifications in this manual are based on the latest information available at the time of publication. The right is reserved to make changes at any time without notice.

Contents

Chapter 1 Introduction	4
General Safety Statements	4
Scope	4
Ordering Parts	5
Replacement Parts	5
Repair Kits	5
Chapter 2 Safety	6
Safety Guidelines	6
Cautionary Symbol Definitions	7
Safety Cautions	8
Safety Sign-Off Sheet	11
Chapter 3 Decals	12
Chapter 4 General Information	15
System Description	15
Optional Features	16
Material Sampled	16
Sampler Construction	16
Chapter 5 Installation and Adjustments	17
Receiving Inspection	17
Pre-Installation Preparation	17
Location	17
General Mounting Guidelines	17
Material Sample Transport Lines	17
Controller Location	18
System Wiring	18
Chapter 6 Operation	19
Control Components and their Functions	19
Sampler Mounted Electrical Components	23
Chapter 7 Maintenance	24
General Maintenance	24
Periodic Inspection	24
Lubrication	24
Mechanical Repair Procedures	25
Chapter 8 Troubleshooting	27
General GRE Sampler Troubleshooting	27
Chapter 9 Warranty	29

1. Introduction

This manual covers the installation and operation for the Sampler Model GRE. This manual provides guidelines for installing the product. You must retain a qualified contractor to provide on-site expertise. INTERSYSTEMS IS NOT RESPONSIBLE FOR THE INSTALLATION OF THIS PRODUCT.

InterSystems reserves the right to improve its product whenever possible and practical to do so. We reserve the right to change, improve and modify products at any time without obligation to make changes, improvements and modifications on equipment sold previously.

General Safety Statements

1. The Sampler system is designed and manufactured with operator safety in mind. However, residual hazards remain due to the nature of material handling, and specific material hazards. Use extreme caution at all times.
2. Modifications to equipment may cause extremely dangerous situations that could result in damage to the equipment as well as serious injury or death. Never modify the equipment.
3. Intersystems recommends that you contact the local power company to have a representative survey the installation to ensure wiring is compatible with their system and adequate power is supplied to the unit.
4. Consult InterSystems before making any changes to the sampler or its operating environment. Careless changes could result in death or serious injury to people and reduce the performance and service life of the equipment.
5. Never perform any service on this equipment or any powered equipment until all power has been shut off and locked out so that it cannot be restored without the consent and knowledge of the person who interrupted power. Power includes electrical, fluid, mechanical or pneumatic energy.
6. Never perform any service on this equipment without utilizing the required PPE (Personal Protective Equipment). Refer to the MSDS (s) (Material Safety Data Sheet (s)), on all products to which this equipment is in contact to determine what PPE is required.



This equipment is to be operated only on the voltage designated on the certified electrical drawings. Fire or explosion may result, which can cause death, serious injury and extensive damage to equipment. Do not connect to voltages other than designated.

Scope

The certified drawings list the non-standard components that have been incorporated into the equipment. InterSystems, Inc. normally stocks non-fabricated parts and non-custom OEM parts. Replacement parts for any other components, including fabricated parts and custom OEM components can be supplied upon request.

Ordering Parts

Direct parts orders or requests for technical assistance to your sales representative or to:

InterSystems, Inc.

9575 N. 109th Ave

Omaha, NE. 68137

Phone: (402) 330-1500

FAX: (402) 330-3350

Please have available the MODEL NUMBER, SERIAL NUMBER and CUSTOMER ORDER NUMBER of the equipment in question as well as the location where the sampler is INSTALLED.

Replacement Parts

The InterSystems, Inc. sampler is a quality built piece of machinery. As with any machine, parts do wear out and fail. It is InterSystems recommendation that a small supply of spare parts be kept on hand to cover any minor breakdowns. A separate priced spare parts list will be sent identifying the suggested spare parts. It is also necessary to check the certified drawings, which will list any special or custom components utilized on this equipment.

Repair Kits

The following chart lists repair kits and parts that are available from InterSystems. These kits are offered as a more economical solution by rebuilding the defective part rather than replacing it. However in some cases the part may be beyond repair and replacement will be necessary.

Product Code	Description
34769	Standard SAE 80W-90 EP Gear Lubricant Oil Quart (Pennzoil 4096)
529601	Optional Synthetic Gear Lubricant Oil Quart (Mobil SHC634)
35527	Limit Switch Contact Block 1 N.O. 1 N.C.

Safety Guidelines

Safety guidelines are general-to-specific safety rules that must be followed at all times. This manual is written to help you understand safe operating procedures and problems that can be encountered by the operator and other personnel when using this equipment. Save these safety guidelines for future reference.

As owner or operator, you are responsible for understanding the requirements, hazards, and precautions that exist and to inform others as required. Unqualified persons must stay out of the work area at all times.

Alterations must not be made to the equipment. Alterations can produce dangerous situations resulting in **SERIOUS INJURY or DEATH**.

This equipment must be installed in accordance with the current installation codes and applicable regulations, which must be carefully followed in all cases. Authorities having jurisdiction must be consulted before installations are made.

When necessary, you must consider the installation location relative to electrical, fuel and water utilities.

Personnel operating or working around equipment must read this manual. This manual must be delivered with equipment to its owner. Failure to read this manual and its safety instructions is a misuse of the equipment.

ST-0001-3

Cautionary Symbol Definitions

Cautionary symbols appear in this manual and on product decals. The symbols alert the user of potential safety hazards, prohibited activities and mandatory actions. To help you recognize this information, we use the symbols that are defined below.



This symbol indicates an imminently hazardous situation which, if not avoided, **will result in serious injury or death.**



This symbol indicates a potentially hazardous situation which, if not avoided, **can result in serious injury or death.**



This symbol indicates a potentially hazardous situation which, if not avoided, **can result in minor or moderate injury.**



This symbol is used to address practices not related to personal injury.



This symbol indicates a general hazard.



This symbol indicates a prohibited activity.



This symbol indicates a mandatory action.

ST-0005-2

Safety Cautions

Use Personal Protective Equipment

- Use appropriate personal protective equipment:

Eye Protection



Respiratory Protection



Foot Protection



Hearing Protection



Head Protection



Fall Protection



Hand Protection



- Wear clothing appropriate to the job.
- Remove all jewelry.
- Tie long hair up and back.

ST-0004-1

Follow Safety Instructions

- Carefully read all safety messages in this manual and safety signs on your machine. Keep signs in good condition. Replace missing or damaged safety signs. Be sure new equipment components and repair parts include the current safety signs. Replacement safety signs are available from the manufacturer.
- Learn how to operate the machine and how to use controls properly. Do not let anyone operate without instruction.
- If you do not understand any part of this manual or need assistance, contact your dealer.



ST-0002-1

Maintain Equipment and Work Area

- Understand service procedures before doing work. Keep area clean and dry.
- Never service equipment while it is operating. Keep hands, feet, and clothing away from moving parts.
- Keep your equipment in proper working condition. Replace worn or broken parts immediately.



ST-0003-1

Stay Clear of Hoisted Equipment

- Always use proper lifting or hoisting equipment when assembling or disassembling equipment.
- Do not walk or stand under hoisted equipment.
- Always use sturdy and stable supports when needed for installation. Not following these safety precautions creates the risk of falling equipment, which could crush personnel and cause serious injury or death.



ST-0047-1

Sharp Edge Hazard

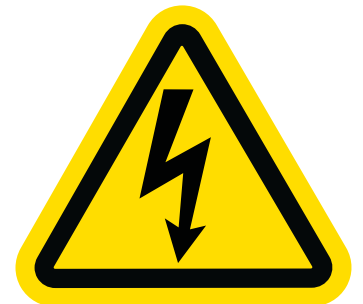
- This product has sharp edges, which can cause serious injury.
- To avoid injury, handle sharp edges with caution and always use proper protective clothing and equipment.



ST-0036-2

Install and Operate Electrical Equipment Properly

- Electrical controls must be installed by a qualified electrician and must meet the standards set by applicable local codes (National Electrical Code for the US, Canadian Electric Code, or EN60204 along with applicable European Directives for Europe).
- Lock-out power source before making adjustments, cleaning, or maintaining equipment.
- Make sure all equipment and bins are properly grounded.



ST-0075-1

2. Safety

Stay Clear of Moving Parts

- Stay clear - machine can start without warning.
- Entanglement in gate will cause serious injury.
- Keep all shields and covers in place at all times.
- Lock-out power source before making adjustments, cleaning, or maintaining equipment.



ST-0070-1

Flying Material Hazard

- Flying material can cause severe eye injury or blindness.
- Wear safety glasses around operating equipment.



ST-0074-1

Stay Clear of Rotating Parts

- Do not service equipment while it is in operation.
- Entanglement in rotating parts or exposed belts will cause serious injury or death.
- Keep all shields and covers in place at all times.
- Lock-out power source before making adjustments, cleaning, or maintaining equipment.



ST-0072-1

Toxic Fume and Dust Hazard

- Do all work outside or in a well-ventilated area. Dispose of paint and solvent properly.
- Remove paint before welding or heating:
 - Avoid potentially toxic fumes and dust. Hazardous fumes can be generated when paint is heated by welding, soldering, or using a torch.
 - If you sand or grind paint, avoid breathing the dust. Wear an approved respirator.
 - If you use solvent or paint-stripper, remove stripper with soap and water before welding.
 - Remove solvent or stripper containers and other flammable material from area. Allow fumes to disperse at least 15 minutes before welding or heating.



ST-0043-2

Safety Sign-Off Sheet

Below is a sign-off sheet that can be used to verify that all personnel have read and understood the safety instructions. This sign-off sheet is provided for your convenience and personal record keeping.

[illegible]

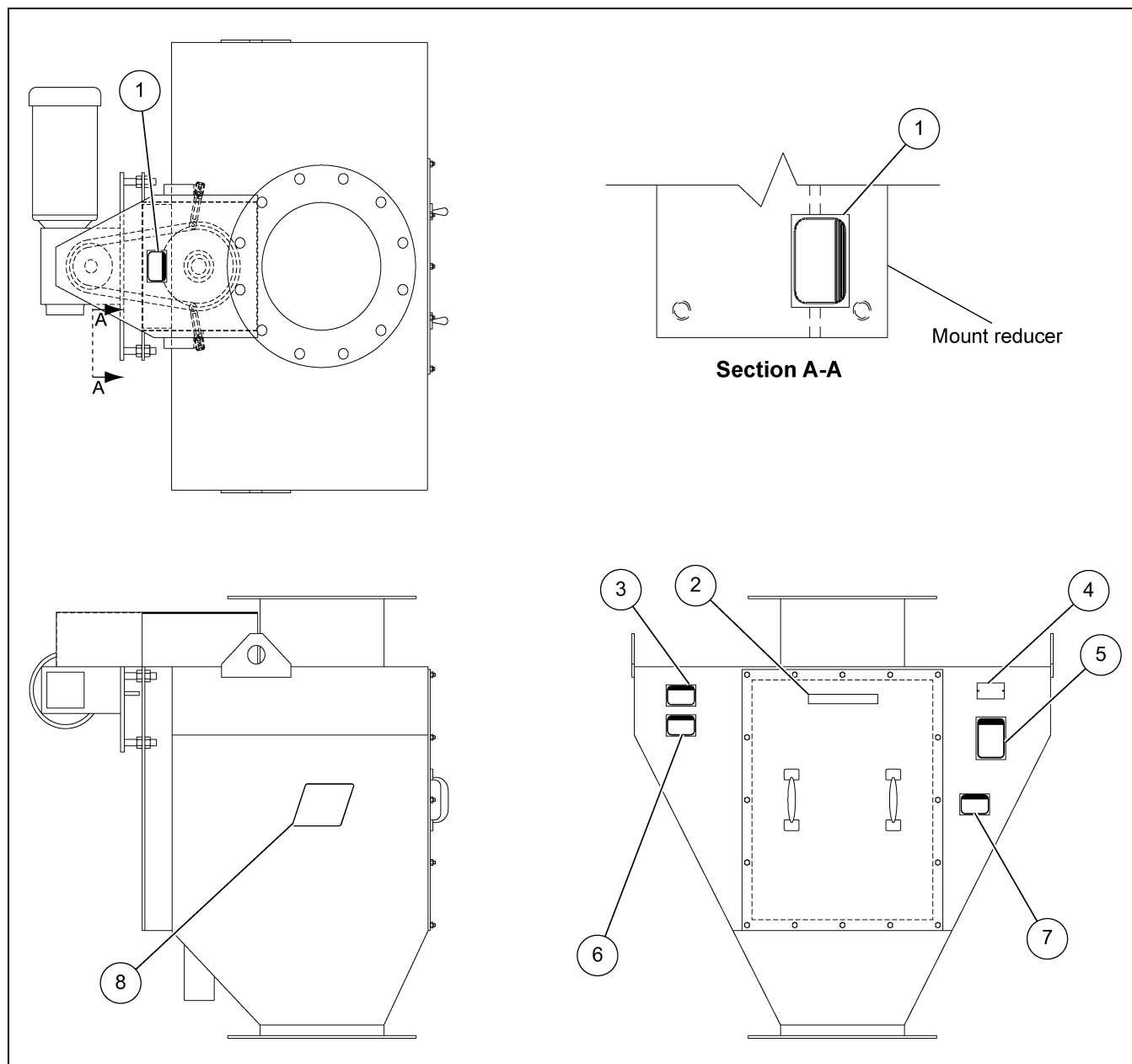
ST-0007

3. Decals



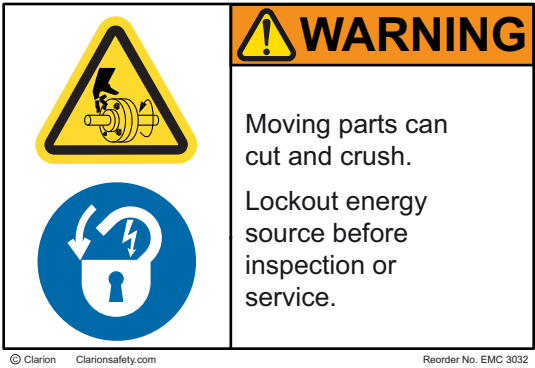

The safety decals on your equipment are safety indicators which must be carefully read and understood by all personnel involved in the installation, operation, service and maintenance of the equipment. To replace a damaged or missing decal, contact us to receive a free replacement.

InterSystems

9575 N. 109th Ave.
Omaha, Nebraska 68137
Phone: (402) 330-1500
FAX: (402) 330-3350



NOTE: These signs must never be removed, tampered with, painted over or obscured in anyway. If labels are damaged or become unreadable, replacement labels are available from InterSystems.

Ref #	Decal #	Decals	Description
1	EMC 24 32		Exposed Belt
2	IS517X1		IS Sampler
3	EMC 30 32		Moving Part
4	IS Tag		Serial Number Tag

3. Decals

Ref #	Decal #	Decals	Description
5	EMC 402 32	<p>© Clarion Clarionsafety.com 16089 Reorder No. EMC 402 32</p>	Lock Out Machine
6	EMC 28 32	<p>©Clarion 15225 No. EMC 28 32</p>	Eye Protection
7	EMC 40 332	<p>©Clarion clarionsafety.com Reorder No. EMC 403 32</p>	Starts Without Warning
8	IS526X4		IS Logo

System Description

The GRE Sampler is designed to collect a representative sample of granular, flake, pellet, slurry, or other materials in a vertical gravity conveying line. [Figure 4A](#) illustrates a typical GRE Sampler application.

Sample collection is initiated in response to either an operator's manual command or a signal automatically generated by controller logic, usually time-based but which could also be volume or quantity based. A sample cycle begins when an electric motor pivots the slotted sample cutter through the product flow to collect a sample of the material. The sample flows through the sample cutter and out the discharge as it swings through the material flow. The sample cutter, when at rest, is situated under one of two dust seals that seal the sample cutter. The sample from the sample cutter falls down and out the 3.00" (76 mm) O.D. discharge tube to the desired sample collection point, at which point an InterSystems SCS Sample Collection System (optional) may be installed.

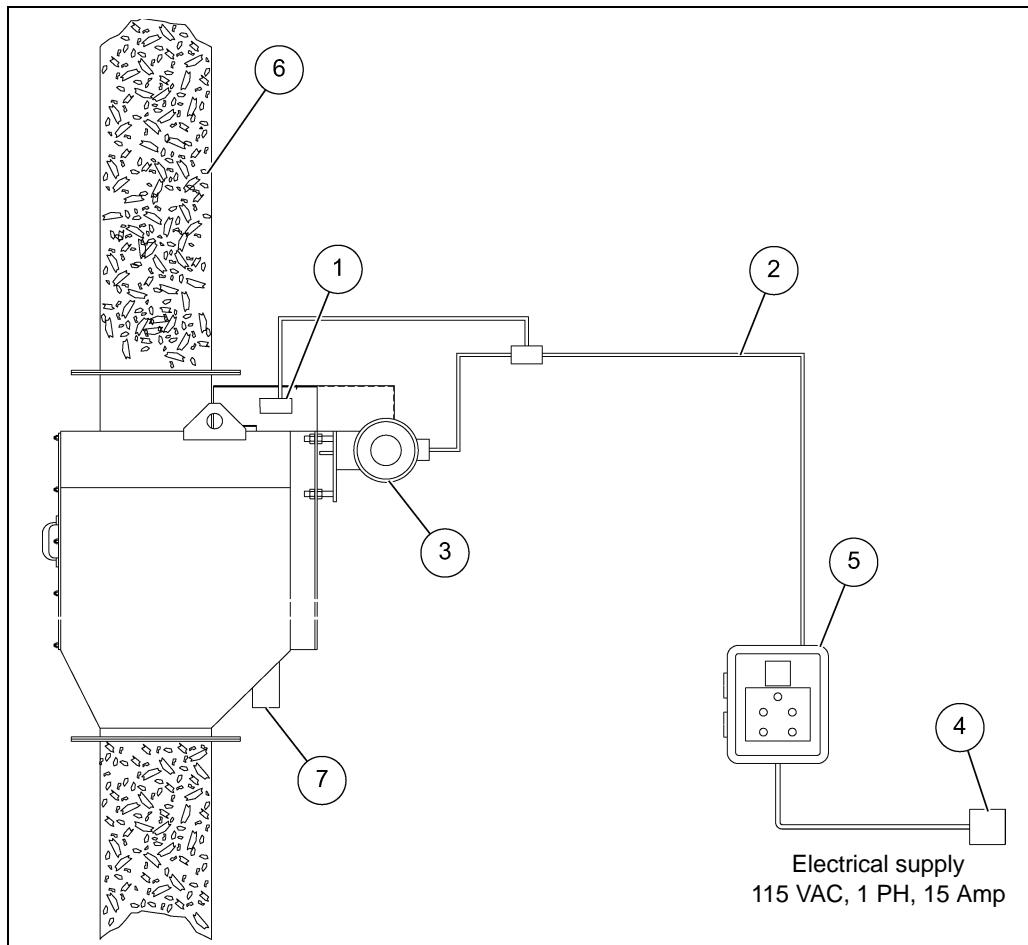


Figure 4A Typical Installation, Model GRE Sampling System

Ref #	Description
1	Limit Switch (2)
2	Electrical Conduits
3	Motor
4	Circuit Breaker

Ref #	Description
5	Sampler Control Panel
6	Material to be Sampled
7	Sample Discharge (Extend to Desired Collection Point)
8	Emergency Stop Lock Out Switch

Optional Features

The certified drawings indicate which, if any, optional features are included with a sampling system. Some of the more frequently specified optional features are briefly described in the following list.

1. Controller arranged to initiate a sampling cycle based on quantity or volume of material passing through conveying line rather than upon elapsed time periods.
2. Explosion-Proof Sampling System. There are several major differences in an explosion-proof sampler as compared to a standard sampling system. An explosion-proof sampler will typically have the following features.
 - a. An explosion-proof limit switch with the rating of:
Class 1, Groups C and D, Division 1 and 2
Class 2, Groups E, F and G, Division 1 and 2
 - b. An explosion-proof motor with the rating of:
Class 1, Groups D, Division 1 and 2
Class 2, Groups E, F and G, Division 1 and 2The Explosion-Proof sampler control is available in two enclosure classifications.
 - c. The NEMA 9 control with the rating of:
Class 2, Groups E, F and G, Division 1 and 2
 - d. The NEMA 7 control with the rating of:
Class 1, Groups C and D, Division 1 and 2
Class 2, Groups E, F and G, Division 1 and 2
3. Positive mechanical seals for sealing the sample cutter when slight conveying line pressures are present.
4. Components of special materials, such as 316 stainless steel, monel, inconel or nedox coatings.
5. Programmable controls to sequence the sampler and the sample collection equipment.
6. Abrasion resistant linings of urethane, AR carbon steel plate, 304 stainless steel or ceramic tile.

Material Sampled

Most materials from light to heavy density granules, flakes, pellets, powders and slurrys.

Sampler Construction

Standard sampler construction is of painted carbon steel or Type 304 Stainless Steel. Other materials and/or finishes appropriate to the operating environment and the material or product being sampled may be used. Refer to the certified drawing(s) for any optional or special components installed on the sampler.

Receiving Inspection

Carefully inspect the sampling system for damage as soon as it is received. Also, verify that the quantity of parts or packages actually received corresponds to the quantity shown on the packing slip. Report any damage or shortage to the delivering carrier as soon as possible. InterSystems responsibility for the equipment ended with acceptance by the delivering carrier. Refer to the bill of lading.

Pre-Installation Preparation

NOTE: *Before starting sampling system installation, study this manual, the certified drawing(s) furnished with the system, and other applicable documents (including, but not limited to OSHA Regulations; the National Electrical Code; and all other applicable federal, state, and local codes and regulations).*

Location

The GRE sampler is typically mounted vertically into a gravity flowing conveying line carrying the product to be sampled as shown in [Figure 4A on Page 15](#). The sampler axis must be installed parallel to the axis of the product line for optimum performance. Additionally, the sampler should be located where the product has a non-turbulent flow pattern. The sampler and associated equipment should be located for ease of access and maintenance.

The sampler is to be installed only as shown on the certified drawing(s). If an alternate mounting arrangement is desired contact InterSystems prior to installation for proper guidance. The sampler is of a general design with modifications specifically for your application. It may be necessary to rework the sampler in order for it to function properly if you alter the application.

General Mounting Guidelines



Sampler cannot support any other equipment or conveying line. Collapse of the whole system can cause death, serious injury, and extensive damage to equipment. Properly support all spouts, containers, and conveying lines.

1. Locate and mark the desired mounting location of the sampler on the product conveying line.
2. Cut out the section of conveying line 1/16" to 1/8" longer than the length of the sampler.
3. Slip a companion flange over each end of the conveying line.
4. Locate the sampler in the desired position and adequately brace. Braces are to be permanent.
5. Bolt the companion flanges to the sampler and weld companion flanges to the chute.

Material Sample Transport Lines

The tubing used to transport material samples must be compatible with the operating environment and the material sampled. Typically a 3.00" I.D. flexible hose is slipped over the discharge tube and held in place by a worm clamp. The hose is then routed to allow material to flow via gravity to a convenient collection point. At that point the hose may be connected to a collection jar bracket or a sample collection system cabinet.

Rigid tubing may also be used if desired for the sample transport line.

Make all connections airtight and make sure all interior surfaces of joints are smooth and flush. Any ragged or raised tube ends will collect dust and debris as well as retard material flow. Air leaks can interfere with the pressure or vacuum conveying and sampling system. Escaping sample material can contaminate surrounding atmosphere and equipment.

5. Installation and Adjustments

Controller Location

1. Use vibration isolation pads when mounting the control enclosure or mount the controller in a vibration-free location.
2. Unless ordered for severe duty, locate controller so it is protected from water and dust.
3. Unless an explosion-proof rated controller was specifically ordered, DO NOT locate the controller in a hazardous area.
4. Most applications require that the sampler be in easy view of the controller.

System Wiring

Refer to the certified electrical drawing(s) for specific wiring requirements.

The controller was completely assembled and tested with the sampler before it left the factory. The electrical installation must comply with OSHA Regulations; the National Electrical Code; and all other applicable federal, state, and local codes and regulations.

If wiring between the controller and the sampler unit is run through rigid conduit, use a short length of flexible conduit to connect wiring to the sampler. This will isolate the rigid conduit from any vibration originating in the product conveying line and sampler.

Electrical Power Requirements, System

110/120 VAC 50/60 Hz, Single Phase, 10 Amp Service.

Optional - 220/240 VAC 50/60 Hz, Single Phase, 5 Amp Service.

Refer to the certified electrical drawing(s) for specific wiring requirements. InterSystems strongly recommends that electrical service to the sampling system be an isolated line. Voltage fluctuations and line noise can affect the controller's circuit board, thus causing the sampler to malfunction.

Controller

110/120 VAC, 50/60 Hz, Single Phase, 4 Amp Max. (does not include motor power requirements).

Optional - 220/240 VAC, 50/60 Hz, Single Phase, 2 Amp Max. (does not include motor power requirements).

Drive Motor

Refer to the certified drawing(s) of the GRE sampler for motor size, horsepower, voltage, and current rating.



Failure to observe all safety rules, written and implied and those suggested by common sense, can result in death, serious injury and/or equipment damage. Lock out power before performing any maintenance.

Control Components and their Functions

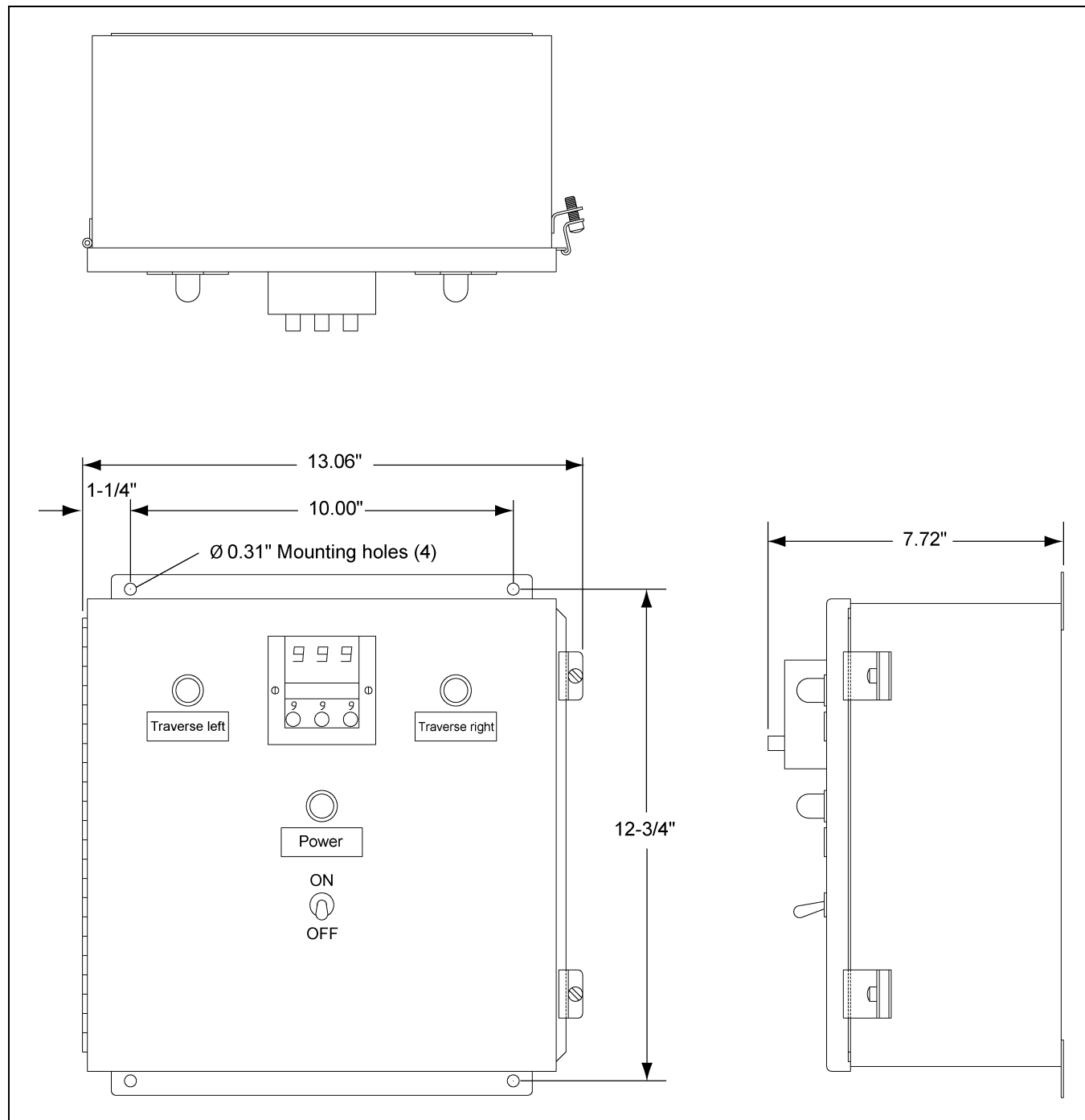


Figure 6A Standard NEMA 4 Control Panel Detail

Refer to the certified electrical drawing(s) for dimensions on control panels with optional features.

6. Operation

Power OFF/ON Switch S-2

This toggle switch controls all electrical power to the controller and the sampler unit.



This machine starts without warning. Moving parts can cause severe injury. Clear area prior to controller start-up.

Power Pilot Light

This light is illuminated as long as power is available to the controller and the power switch (S-2) is set to ON.

Traverse Left Pilot Light

This light will illuminate when the sample pelican is traversing left through the product flow and will stay lit until the sample pelican trips the limit switch on the left side.

Traverse Right Pilot Light

This light will illuminate when the sample pelican is traversing right through the product flow and will stay lit until the sample pelican trips the limit switch on the right side.

Digital Display Timer T-1 (Standard)

As arranged for use in this system, the timer operates in the DOWN and STOP mode. When the AUTO mode is selected, the illuminated display resets to the value dialed in to the Three Digit Preset. Immediately, the timer begins timing down. When the illuminated display reads all zeroes (000), the timer has "timed out" and initiates a sampling cycle. The sample pelican traverses through the product flow to collect a sample. The timer display resets to the preset value and another timing interval is initiated. If the controller is shut off or the mode switched from AUTO to MANUAL, the timing cycle is terminated. When power is restored or the AUTO mode is again selected, the display is reset to the preset value and another cycle begins. **NOTE:** *A new timing cycle can be initiated ONLY after the sampling cycle has completed.*

1. External Settings

a. THE DISPLAY:

The high intensity blue fluorescent display consists of three digits and decimal point (if decimal is set in tenths or hundredths position). Also, there is a blinking Timing Bar and a special Time-Out symbol. The Timing Bar appears to the right of the digits and blinks once every second during timing. The Timing Bar shows quickly that the timer is actively timing especially when the digits do not change rapidly as in the "hours" ranges. When the delay relay is energized at time-out, a triangular Time-Out symbol appears to the left of the digits. The Timing Bar blinks noticeably faster at time-out.

b. SETTING SWITCHES:

The three digits are set with the rotary switch knobs located beneath each digit. These knobs can be rotated in either direction (CW or CCW), and they are "pull" removable if digit set security is desired. Changing one or more digits, during timing, will instantly be reflected by an equivalent change in the timer's display. Setting all three digits to zero will cause instant time-out of the timer.

2. Internal Settings

THE 365 DIGITAL DISPLAY TIMER MUST BE REMOVED FROM ITS HOUSING TO ALTER ANY OF THE FOLLOWING SETTINGS.

a. TIME RANGE:

Decimal Point Location can be changed with the white plastic lever mounted behind the front face of the timer. This lever moves into three positions. With finger force you can change its position and at the same time observe the front of the timer. **NOTE:** *This procedure sets the decimal point electronically as well as visually.*

Time Units (Sec/Min/Hr) are set by moving a small width metal arm in a slotted arc on the side plate nearest to the units (Sec/Min/Hr) window. By depressing this arm slightly with a pencil or pen point, it can be moved to a new position. The time units physically change in the timer's face and the timer is electronically switched to the new units as well.

b. LINE FREQUENCY:

To set the proper line frequency, connect the jumper wire to either the 50 Hz or 60 Hz pin. These pins are clearly marked on the side of the timer.

NOTE: *The timer chassis and the housing are polarized so that the chassis cannot be inserted into its housing upside-down. If the timer is forced into the housing upside-down damage will result.*

Digital Display Counter C-1 (Optional)

As arranged for use in this system, the counter operates in the DOWN and STOP mode. When the AUTO mode is selected, the illuminated display resets to the value dialed in to the Three Digit Preset. Immediately, the counter begins counting down. When the illuminated display reads all zeroes (000), the counter has "counted out" and initiates a sampling cycle. The sample pelican traverses through the product flow to collect a sample. The counter display resets to the preset value and another counting interval is initiated. If the controller is shut off or the mode switched from AUTO to MANUAL, the counting cycle is terminated. When power is restored or the AUTO mode is again selected, the display is reset to the preset value and another cycle begins. **NOTE:** *A new counting cycle can be initiated ONLY after the sampling cycle has completed.*

1. External Settings

a. THE DISPLAY:

The high intensity blue fluorescent display consists of three digits and a Counting Bar with a special Count-Out symbol. The Counting Bar appears to the right of the digits and blinks once every count, regardless of range. When the delay relay is energized at count-out, a triangular Count-Out symbol appears to the left of the digits.

b. SETTING SWITCHES:

The three digits are set with the rotary switch knobs located beneath each digit. These knobs can be rotated in either direction (CW or CCW), and they are "pull" removable, if digit set security is desired. Changing one or more digits, during counting, will instantly be reflected by an equivalent change in the counter's display. Setting all three digits to zero will cause instant count-out of the counter.

6. Operation

2. Internal Settings

THE 366 DIGITAL DISPLAY COUNTER MUST BE REMOVED FROM ITS HOUSING TO ALTER THE COUNT RANGE:

The 366 has three ranges.

- 1x = Counts single pulses to 999
- 10x = Counts every tenth pulse to 9,990
- 100x = Counts every hundredth pulse to 99,900

Each range is selectable using finger force on the white plastic lever behind the front face of the counter. In two of the three possible lever positions, an indicator will appear in a range window located on the front face of the counter. When nothing appears in this window the count is in the x 1 range.

NOTE: *The counter chassis and the housing are polarized so that the chassis cannot be inserted into its housing upside-down. If the counter is forced into the housing upside-down damage will result.*

Main Fuse

This fuse, located in a fuse block within the controller enclosure, protects the controller and sampler components against overloads and short circuits.

For 110/120 VAC, 1 PH operation use ONLY a Buss Type FNM, 4 Amp, 250 Volt Slo-Blo fuse or equal.

For 220/240 VAC, 1 PH operation use ONLY a Buss Type FNM, 2 Amp, 250 Volt Slo-Blo fuse or equal.

Index Relay IR-1

This mechanical latching relay signals the sampler motor starter coils. When the relay coil receives a momentary signal from either the timer T-1 or the manual sample switch the maintained switch contacts change to the alternate position. Upon changing position the opposite motor starter coil receives power, the motor starts and a sample is taken.

Terminal Strip

This 10-position barrier terminal strip serves as the controller's interface and connection point for all external circuits and for the components mounted on the enclosure's front panel. Refer to the certified electrical drawing(s).

Sampler Mounted Electrical Components

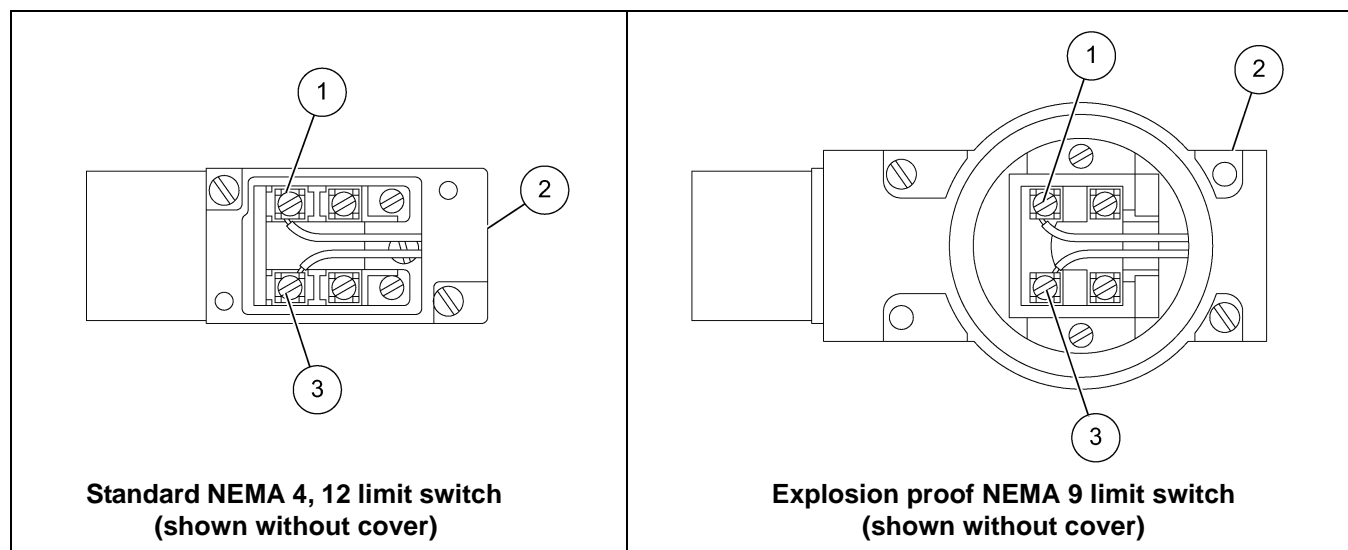


Figure 6B *Limit Switch Connections*

Refer to the certified electrical drawing(s) for dimensions on control panels with optional features.

Ref #	Description
1	N.O.Contact Connection
2	1/2" NPT Conduit Connection
3	Common Connection

Limit Switches, LS-1 and LS-2

One of these switches are actuated when the sample cutter is in a rest position. Upon initiation of a sample cycle the power is routed through the normally closed contacts of the opposite limit sample to the drive motor starter. The drive motor starts and the sample cutter rotates through the material flow towards the other side. Upon reaching the opposite side the cam trips the limit switch. The opening of the normally closed contacts removes power to the drive motor starter thus stopping the sample cutter rotation. The sample cutter remains on this side until another signal to sample is given by the controller.

Correct wiring termination is essential to proper sampler operation. Refer to [Figure 6B](#), it shows the limit switch utilized on the GRE sampler and the physical orientation of the proper wiring connections.

Drive Motor

This motor drives the sample cutter rotation through a right angle gear reducer and a set of sprockets and chain. Verify that the motor is turning the proper direction of rotation when wiring the system. On initial setup, jog the motor to ensure proper rotation.



Failure to observe all safety rules, written and implied and those suggested by common sense, can result in death, serious injury and/or equipment damage. Lock out power before performing any maintenance.

General Maintenance

A good maintenance program involves thorough general housekeeping, adequate periodic re-lubrication, and replacement of worn or damaged components.

Periodic Inspection

At regularly scheduled intervals, while observing all safety precautions, observe the sampler as it operates. Inspect for:

1. Loose or missing hardware
2. Noisy motor or motor/reducer bearings
3. Overheated motor or reducer
4. Adequate lubricant in gear reducer
5. Structural damage
6. Rust or corrosion
7. Damaged wiring and conduit, including exposed conductors and connections
8. Make sure that all guards are in place and that all warning labels are in place and legible.
See Page 6, GENERAL SAFETY INFORMATION, explains the purpose and intended location of the warning signs. Warning signs are an important part of any safety program; replace any missing signs IMMEDIATELY.

Lubrication

Drive Chain, Sprockets and Flange Bearing

The drive chain, sprockets and flange bearing have been greased at the factory. The chain should be thoroughly cleaned and re-greased once a year using a multi-purpose grease. The flange bearing should also be greased at the same time.

Gear Reducer

The gear reducer is shipped filled with oil. Check the oil level every six months and add oil if required. Under normal sampler operating conditions the oil should be changed once every two years.

Use a gear lubricant with an AGMA #8 rating for normal operating conditions. Use a synthetic gear lubricant such as “Mobil SHC 634” for extreme operating conditions.

Mechanical Repair Procedures

Drive Chain Adjustment

The drive chain will need adjustment periodically to maintain proper tension. The gear reducer is mounted to the sampler by means of an adjustment plate. Loosen, adjust and re-tighten the mounting nuts to increase or decrease chain tension. The chain only needs to be tight enough to prevent any sag or slack. At each corner of the adjustment plate, measure the distance between the adjustment plate and the mounting angles on the sampler. All four measurements must be within 0.06" of each other for proper alignment.

Limit Switch Adjustment

Loosen and adjust the limit switch arms if required. The limit switches trip on the tripper attached to the shaft of the sample pelican and signal the control to remove power from the motor. They should trip before the sample pelican completes its traverse. When a limit switch trips the sample pelican should gently coast to a stop under the dust seal and up against the bumper.

Sample Cutter Blade Replacement

When following the instructions below, refer to the applicable drawing of the sampler. Reference the certified drawing(s).

1. Shut off and lock out all power (electrical and pneumatic).
2. Shut down conveying line and remove the large inspection cover on the sampler housing.
3. Move the sample pelican to the middle of its travel.
4. Remove the 1/4"-20 UNC hex head bolts fastening the sample cutter to the sample pelican.
5. Using a utility knife, cut the caulking seal around the bottom of the cutter blade and remove.
6. Note the taper of the cutter blade opening. Install the new cutter blade on the sample pelican with narrow part nearest the drive shaft.
7. Re-install the 1/4"-20 UNC hex head bolts fastening the sample cutter to the sample pelican.
8. Re-caulk the joint between the cutter blade and the sample pelican to ensure a tight seal.
9. Move the sample pelican to its home position on each side and check to see that the cutter fits snugly under the pelican seals.
10. Re-install the inspection cover on the housing.
11. Restore power to the sampler and operate it through several collection cycles.

Sample Cutter Seals Replacement

When following the instructions below, refer to the applicable drawing of the sampler. Reference the certified drawing(s).

1. Shut off and lock out all power (electrical and pneumatic).
2. Shut down conveying line and remove the large inspection cover on the sampler housing.
3. Move the sample pelican to the middle of its travel.
4. Remove the 5/16"-18 UNC hex head nuts fastening the sample cutter seal brackets the sampler housing (avoid dropping the assemblies inside the sampler).
5. Wrap the new seals around the seal brackets and re-install.
6. Move the sample pelican to its home position on each side and check to see that the cutter fits snugly under the pelican seals.
7. Re-install the inspection cover on the housing.
8. Restore power to the sampler and operate it through several collection cycles.

General GRE Sampler Troubleshooting



Careless or accidental restoration of power can result in death or serious injury. Make certain area is clear before removing lock outs.

Problem	Possible Cause	Solution
Sampler does not cycle in either Auto or Manual modes (Power light OFF).	Power switch OFF.	Turn power switch ON.
	Circuit breaker is open.	Reset breaker.
	Main fuse is blown.	Replace.
	Faulty supply wiring.	Correct. Refer to certified electrical schematic.
	Defective power switch.	Replace switch.
Sampler does not cycle in either Auto or Manual modes (Power light ON).	Faulty system wiring.	Correct. Refer to certified electrical schematic.
	Motor power OFF.	Turn ON.
	Motor starter heaters tripped.	Reset.
	Motor burnt out.	Replace.
Sampler timer T-1 digital display does not illuminate but sampler works in Manual mode.	Defective Auto/Manual switch S-2.	Replace switch if line voltage is absent across #1 and #2 on timer T-1.
	Defective timer T-1.	Replace timer if line voltage is present across #1 and #2 on timer T-1.
Sample size too small or large.	Sample cutter opening too small or large.	Replace. Refer to Sample Cutter Blade Replacement section on Page 25 .
	Sample interval timer or counter set too high or low.	Adjust sample interval timer T-1 or counter C-1. Refer to Main Fuse and Index Relay IR-1 sections on Page 22 .
Sampler leaks air or material continuously out the sample discharge.	Sample cutter seals torn or missing.	Replace. Refer to Sample Cutter Seals Replacement section on Page 26 .
	Sample cutter not stopping under dust seal.	Adjust limit switch. Refer to Limit Switch Adjustment section on Page 25 .
	Sampler installed on a positive pressure line.	Remove pressure by venting sampler or consult InterSystems.
	Sample cutter worn.	Replace. Refer to Sample Cutter Blade Replacement section on Page 25 .
Sampler makes loud banging noises.	Limit switches not set properly.	Adjust limit switch. Refer to Limit Switch Adjustment section on Page 25 .

NOTES

InterSystems, Inc. reserves the right to make changes in design or in construction of equipment and components without obligation to incorporate such changes in equipment and components previously ordered.

WARRANTY, LIMITATION OF LIABILITY, DISCLAIMER OF IMPLIED WARRANTIES: InterSystems, Inc. manufactured equipment and components are guaranteed against defects in workmanship or materials for one year from date of shipment. The obligation of InterSystems, Inc. with respect to any goods is limited to replacement or repair of defective parts and equipment provided those parts are returned, shipping costs prepaid, to InterSystems' factory and provided the product has not been subject to misuse, negligence, or accident, or repaired or altered outside of our factory, or other than by an Authorized Service Representative. This warranty does not cover the replacement of parts inoperative because of wear occasioned by use, the cost of replacing parts by a person other than an InterSystems employee or an Authorized Service Representative, or the adjustment of a product where the product was improperly adjusted by the purchaser. In addition, this warranty does not cover components manufactured by others such as motors, drives, clutches, cylinders, valves, blowers, and the like. On those components the standard Manufacturers' warranty applies. In any event, liability is limited to the purchase price paid, and InterSystems, Inc. will, under no circumstances, be responsible for special or consequential damages, or for incidental damages.

INTERSYSTEMS, INC. NEITHER MAKES NOR AUTHORIZES ANY WARRANTY OTHER THAN AS HEREIN CONTAINED. THIS WARRANTY IS IN LIEU OF ALL OTHER WARRANTIES, EXPRESS OR IMPLIED, INCLUDING THOSE OF MERCHANTABILITY AND FITNESS FOR A PARTICULAR PURPOSE.

This equipment shall be installed in accordance with the current installation codes and applicable regulations, which should be carefully followed in all cases. Authorities having jurisdiction should be consulted before installations are made.



InterSystems
9575 N. 109th Ave.
Omaha, Nebraska 68142
Toll Free: (800) 228-1483
www.gsiag.com



InterSystems is a part of GSI, a worldwide brand of AGCO Corporation.