

Farm/Commercial Distributor

Instruction Manual

PNEG-1385

Date: 06-03-15



PNEG-1385

All information, illustrations, photos, and specifications in this manual are based on the latest information available at the time of publication. The right is reserved to make changes at any time without notice.

Contents

Chapter 1 Introduction	4
Chapter 2 Safety	5
Cautionary Symbols Definitions	5
Safety Instructions	6
Chapter 3 Installation Notes	8
Chapter 4 Maintenance	12
Greasing the Bearing	12
Replacing the Wear Liner	13
Replacing the Brush Mount Assembly	14
Chapter 5 Parts List	15
6" 4 Hole, 45° Distributor Assembly (DFB06445G)	16
6" 6 Hole, 45° Distributor Assembly (DFB06645G)	18
6" 8 Hole, 45° Distributor Assembly (DFB06845G)	20
8" 6 Hole, 45° Distributor Assembly (DFB08645G)	22
8" 8 Hole, 45° Distributor Assembly (DFB08845G)	24
8" 10 Hole, 45° Distributor Assembly (DFB081045G)	26
10" 6 Hole, 45° Distributor Assembly - Drawing A (DFB10645G)	28
10" 6 Hole, 45° Distributor Assembly - Drawing B (DFB10645G)	30
10" 8 Hole, 45° Distributor Assembly (DFB10845G)	32
10" 10 Hole, 45° Distributor Assembly (DFB101045G)	34
12" 4 Hole, 45° Distributor Assembly (DFB12445G)	36
12" 6 Hole, 45° Distributor Assembly (DFB12645G)	38
12" 8 Hole, 45° Distributor Assembly (DFB12845G)	40
12" 10 Hole, 45° Distributor Assembly (DFB121045G)	42
14" 4 Hole, 45° Distributor Assembly (DFB14445G)	44
14" 6 Hole, 45° Distributor Assembly (DFB14645G)	46
14" 8 Hole, 45° Distributor Assembly (DFB14845G)	48
Chapter 6 Warranty	51

1. Introduction

This manual covers general information on the distributor installation. Due to the wide variety of field conditions we cannot cover every aspect of installation. We offer one method for installing equipment but, rely on the qualified contractor's experience and techniques. Some conditions and surroundings do not allow certain practices during the installation of equipment. We can not be responsible for the installation of the distributor and accessories. We encourage anyone installing, or maintaining this equipment to thoroughly read this manual before proceeding.

The company is the vendor of the distributor and certain of its optional accessories only, and does not assume responsibility for the installation. The installation recommendations contained within this manual are for consideration only.

The distributor has not been designed to support the weight of other equipment such as cleaners, valves, other distributors, spouting, etc. Separate supporting structures must be provided for any accessory equipment.

READ THIS MANUAL carefully to learn how to properly use and install equipment. Failure to do so could result in personal injury or equipment damage.

INSPECT the shipment immediately upon arrival. The customer is responsible for ensuring that all quantities are correct. The customer should report and note any damage or shortage on the bill of lading to justify their claim to the transport company.

THIS MANUAL SHOULD BE CONSIDERED a permanent part of your equipment and should be easily accessible when needed.

A WARRANTY is provided as part of the company's support program for customers who use and maintain their equipment as described in the manual. The warranty is explained on the warranty page located on the inside back cover of this manual.

This warranty provides you the assurance that the company will back its products when defects appear within the warranty period. In some circumstances, the company also provides field improvements, often without charge to the customer, even if the product is out of warranty. Should the equipment be abused, or modified to change its performance beyond the factory specifications, the warranty will become void and field improvements may be denied.

Cautionary Symbols Definitions

Cautionary symbols appear in this manual and on product decals. The symbols alert the user of potential safety hazards, prohibited activities and mandatory actions. To help you recognize this information, we use the symbols that are defined below.



This symbol indicates an imminently hazardous situation which, if not avoided, **will result in serious injury or death.**



This symbol indicates a potentially hazardous situation which, if not avoided, **may result in serious injury or death.**



This symbol indicates a potentially hazardous situation which, if not avoided, **may result in minor or moderate injury.**



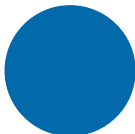
This symbol is used to address practices not related to personal injury.



This symbol indicates a general hazard.



This symbol indicates a prohibited activity.



This symbol indicates a mandatory action.

2. Safety

Safety Instructions

As owner and/or operator, it is your responsibility to know what requirements, hazards, and precautions exist, and to inform all personnel associated with the equipment or in the area. Safety precautions may be required from the personnel. Avoid any alterations to the equipment. Such alterations may produce a very dangerous situation where **SERIOUS INJURY** or **DEATH** may occur.

This equipment shall be installed in accordance with the current installation codes and applicable regulations, which should be carefully followed in all cases. Authorities having jurisdiction should be consulted before installations are made.

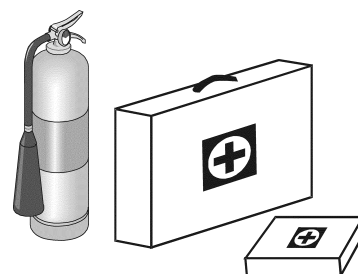
Follow Safety Instructions

- Carefully read and follow all safety messages in this manual and safety signs on your machine. Keep signs in good condition. Replace missing or damaged safety signs. Replacement safety signs are available from the manufacturer.
- Learn how to operate the machine correctly. Do not operate without instruction.
- If you do not understand any part of this manual or need assistance, contact your dealer.



Prepare for Emergencies

- Be prepared if fire starts.
- Keep a first aid kit and fire extinguisher handy.
- Keep emergency numbers for doctors, ambulance service, hospital, and fire department near your telephone.



**Keep Emergency Equipment
Quickly Accessible**

Use Personal Protective Equipment

- Use appropriate personal protective equipment:

Eye Protection**Head Protection****Hearing Protection****Foot Protection****Hand Protection****Fall Protection****Respiratory Protection**

- Wear clothing appropriate to the job.
- Remove all jewelry.
- Tie long hair up and back.

3. Installation Notes

* Sloped transitions are included with the following configurations:

Distributor Offset Transitions for use with GSI Ladder Packages

Bucket Size	Distributor Diameter	# Spouts	No Offset	1' Offset	2' Offset
16"	6	4	X		
		6		X	
		8		X	
	8	6		X	
		8		X	
		10			X
	10	6		X	
		8			X
		10			X
24"	8	6	X		
		8	X		
		10		X	
	10	6	X		
		8		X	
		10		X	
	12	4	X		
		6	X		
		8		X	
		10			X
30"	10	6	X		
		8	X		
		10		X	
	12	4	X		
		6	X		
		8	X		
		10		X	
	14	4	X		
		6	X		
		8		X	
36"	10	6	X		
		8	X		
		10	X		
	12	4	X		
		6	X		
		8	X		
		10	X		
	14	4	X		
		6	X		
		8	X		
42"	14	4	X		
		6	X		
		8	X		

* The offset transition allows clearance between the bucket elevator and the distributor. The transition also keeps the distributor outlet spouting from interfering with the ladder safety cage. Transitions must be installed for proper distributor operation. *(See Figure 3A and Figure 3B on Page 10.)*

Transition Numbers

Offset Transitions	1' Offset	2' Offset
16" and 24" (AR Construction)	GE1612OT-12	GE1612OT-24
16" and 24" (Urethane Lined)	GE1612OT-12L	GE1612OT-24L
30" and 36" (AR Construction)	GE1818OT-12	GE1818OT-24
30" and 36" (Urethane Lined)	GE1818OT-12L	GE1818OT-24L

NOTE: *Standard offset transitions are hot-dip galvanized finish. Powder coat finish available upon request.*

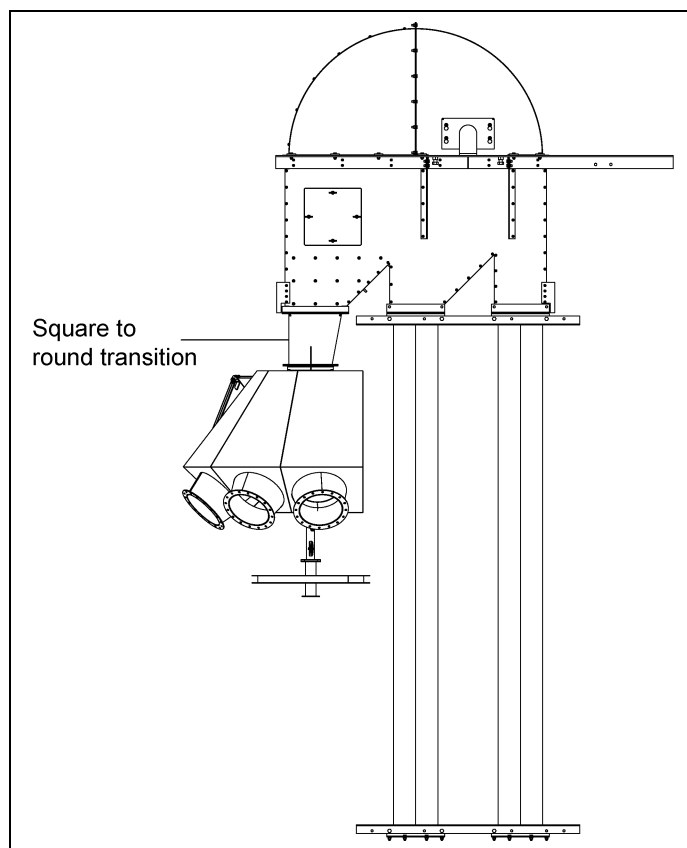


Figure 3A

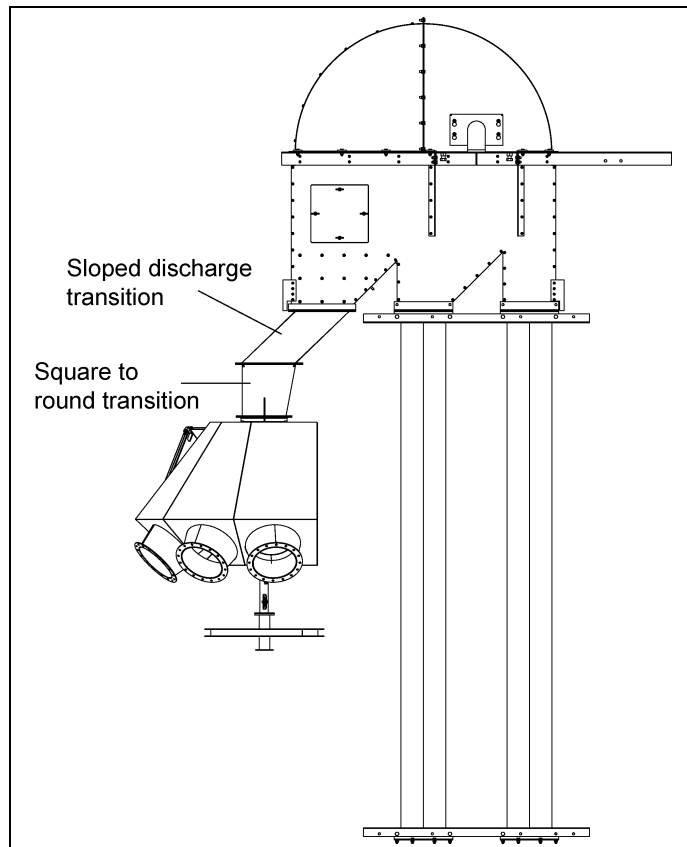


Figure 3B



If you must get inside of distributor, turn OFF and LOCK OUT all power sources. DO NOT operate the distributor while inside.



Crush hazard. Lifting lugs are to be used for placement only. DO NOT use lifting lugs for structural support. (See Figure 3C.)



DO NOT use a clamp band when attaching the down spout to the inlet flange. A bolted connection is required at this point. (See Figure 3C.)

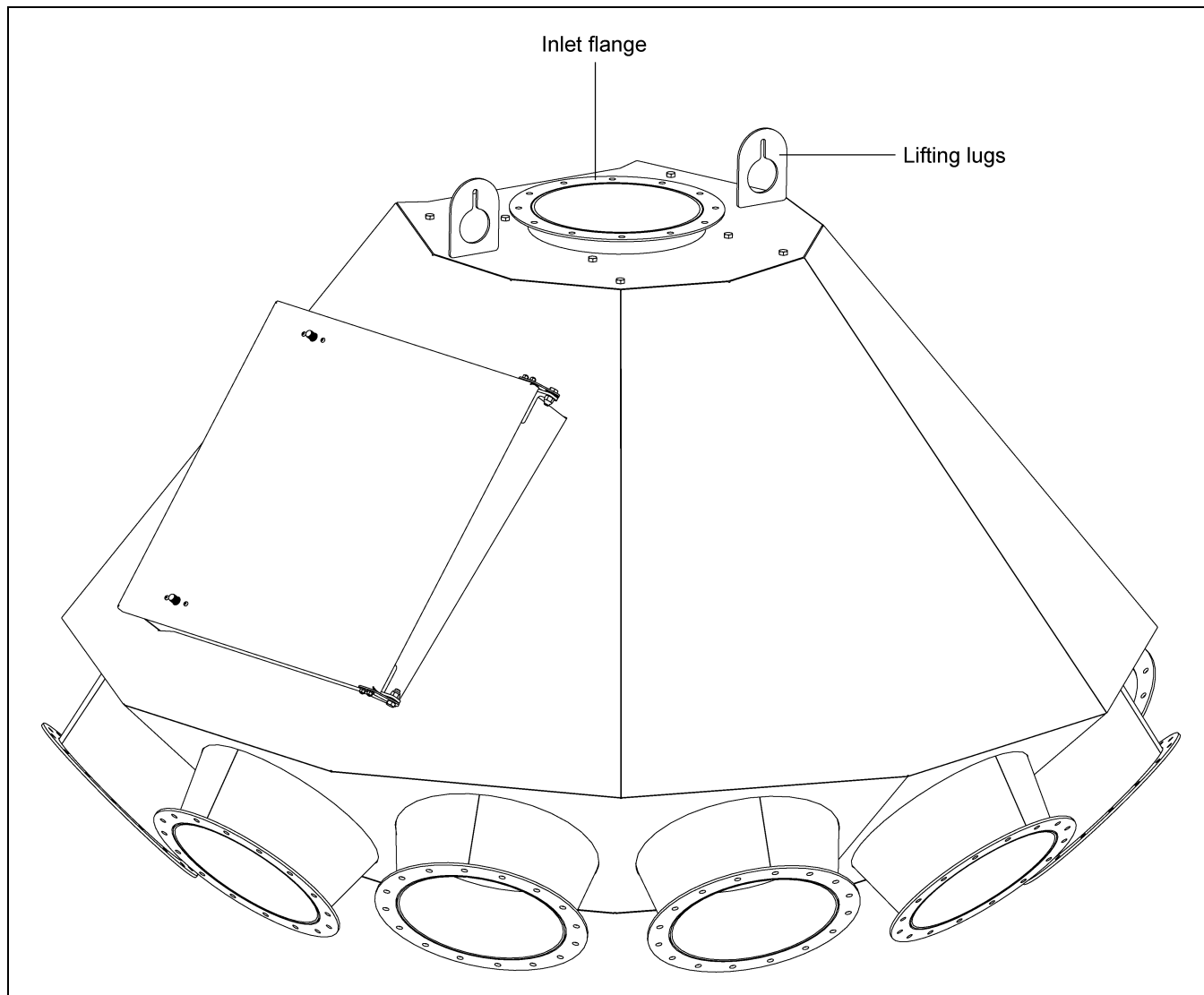


Figure 3C

Greasing the Bearing

The bearing is greased at the factory and is ready for operation. Lubricate annually using a #2 lithium based grease or equivalent. (See Figure 4A.)

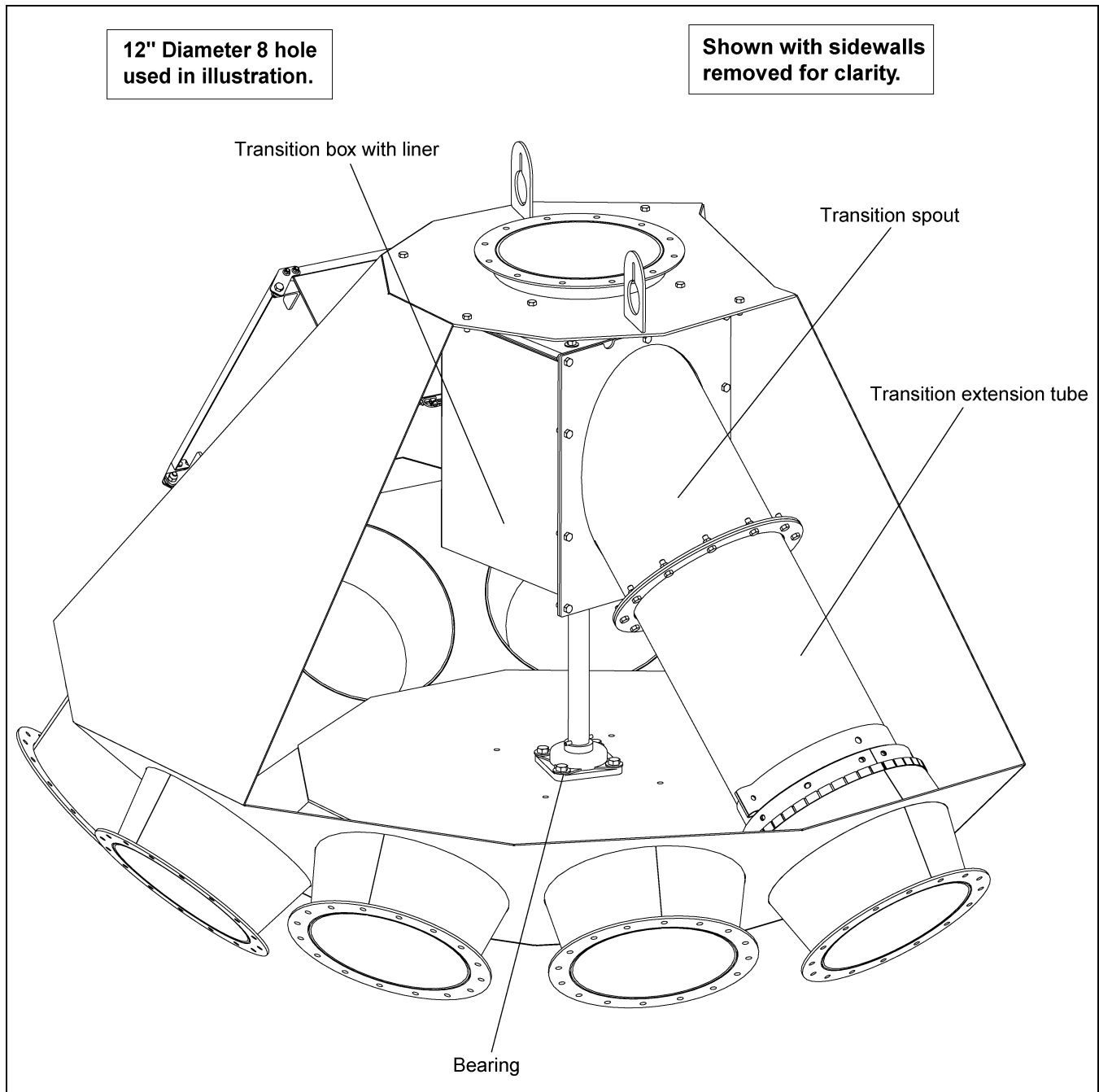


Figure 4A

Replacing the Wear Liner

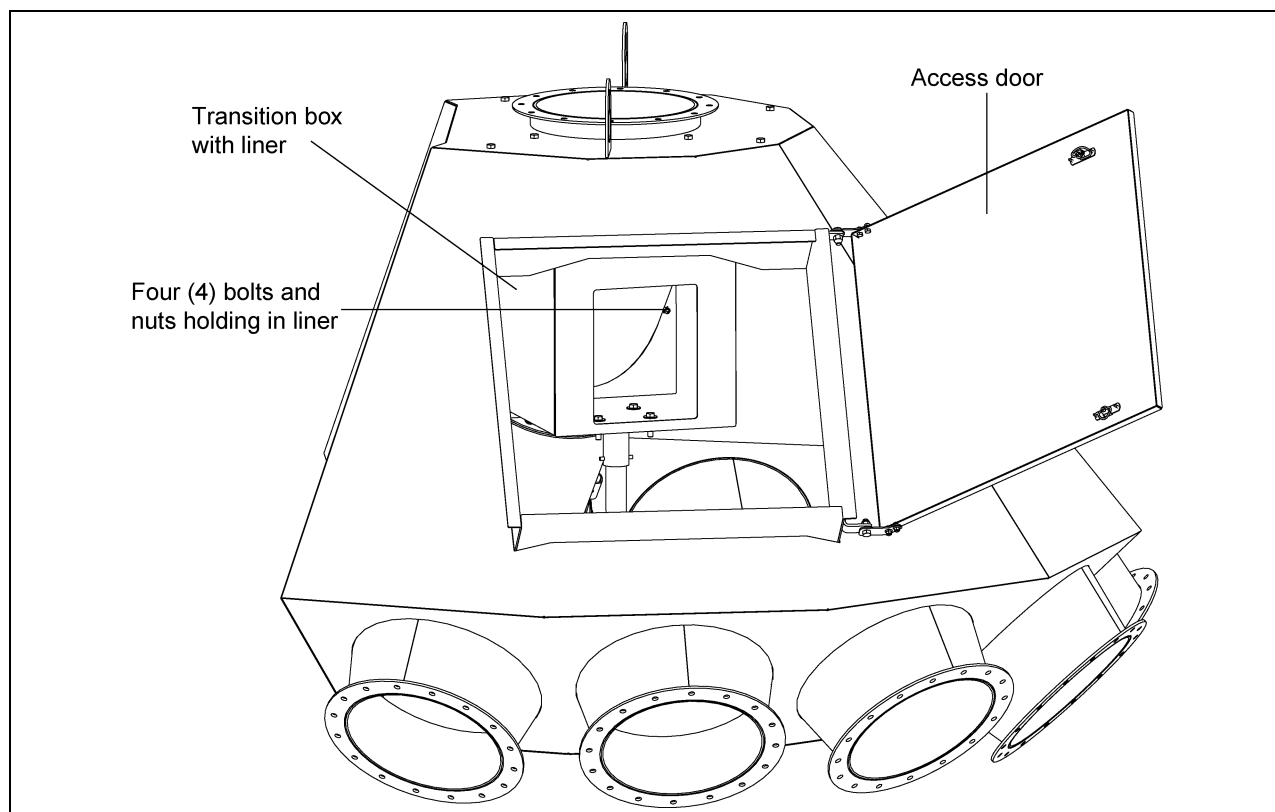


Figure 4B

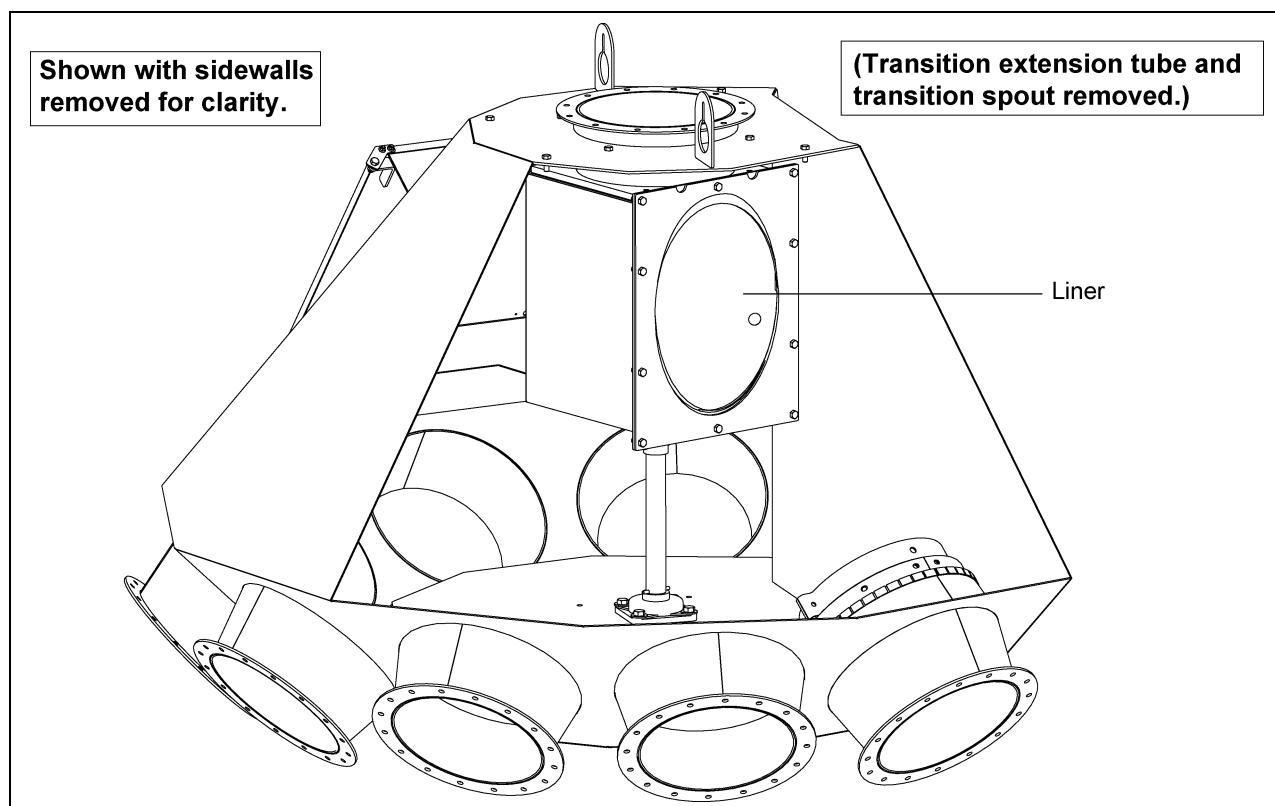


Figure 4C

Replacing the Wear Liner (Continued)

Position the spouting near the door. Remove the transition extension tube. (See Figure 4A on Page 12.) Remove the transition spout. (See Figure 4A on Page 12.) Reverse the transition box which will allow access to the hardware holding the liner in. (See Figure 4B on Page 13.) Replace the old liner with the new liner. (See Figure 4C on Page 13.) Replace the transition spout and transition extension tube.

Replacement Liner Numbers

6" - DFB0368, 8" - DFB0183, 10" - DFB0051, 12" - DFB0121, 14" - DFB0268

Replacing the Brush Mount Assembly

Position the spouting near the door. Remove the transition extension tube. (See Figure 4D.) Loosen the clamp band and remove old brush assembly from the transition extension tube. Replace the new brush assembly onto transition extension tube and tighten in place using the clamp band. Replace the transition extension tube/brush assembly.

NOTE: Make sure the seam of the brush assembly is facing towards the top as shown in Figure 4D. The brush bristles should be somewhat snug against the spout wall. Operate the spout to all outlets to ensure proper alignment and clearance.

Replacement Brush Assembly Numbers

6" - DFB0374, 8" - DFB0189, 10" - DFB0060, 12" - DFB0127, 14" - DFB0274

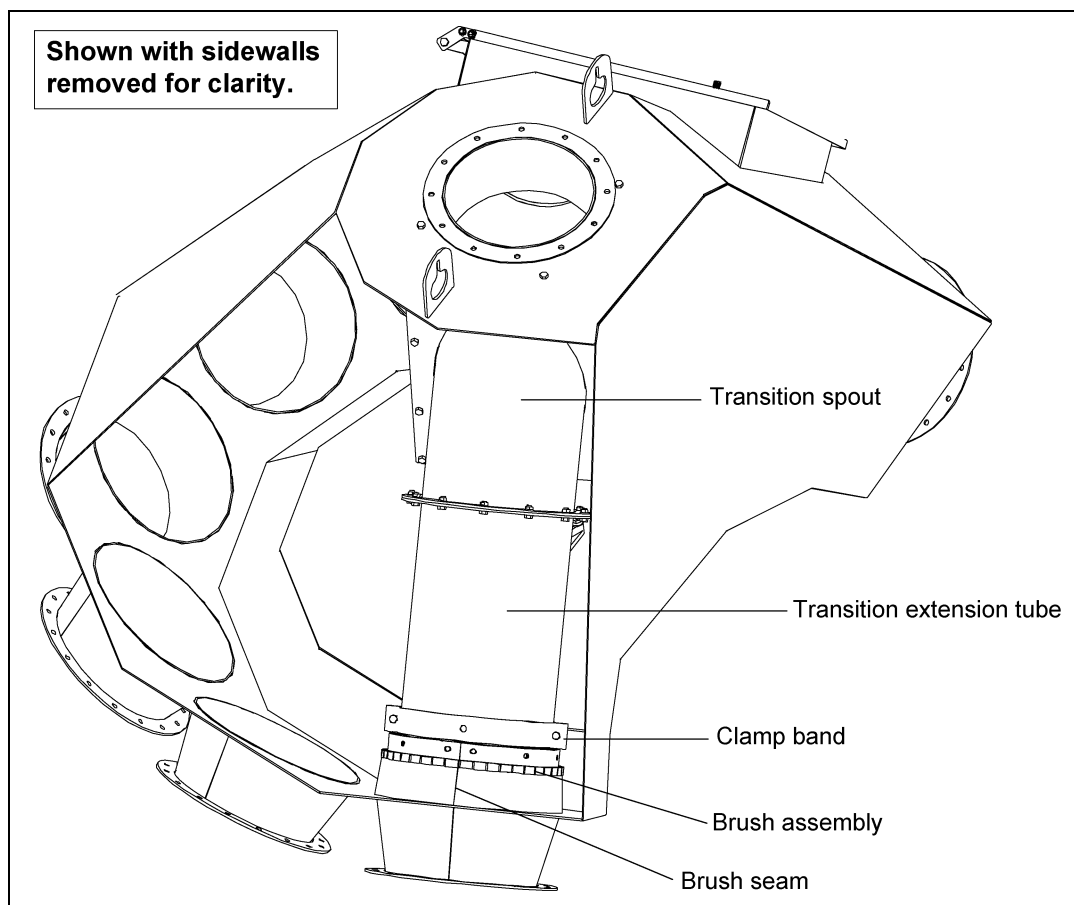
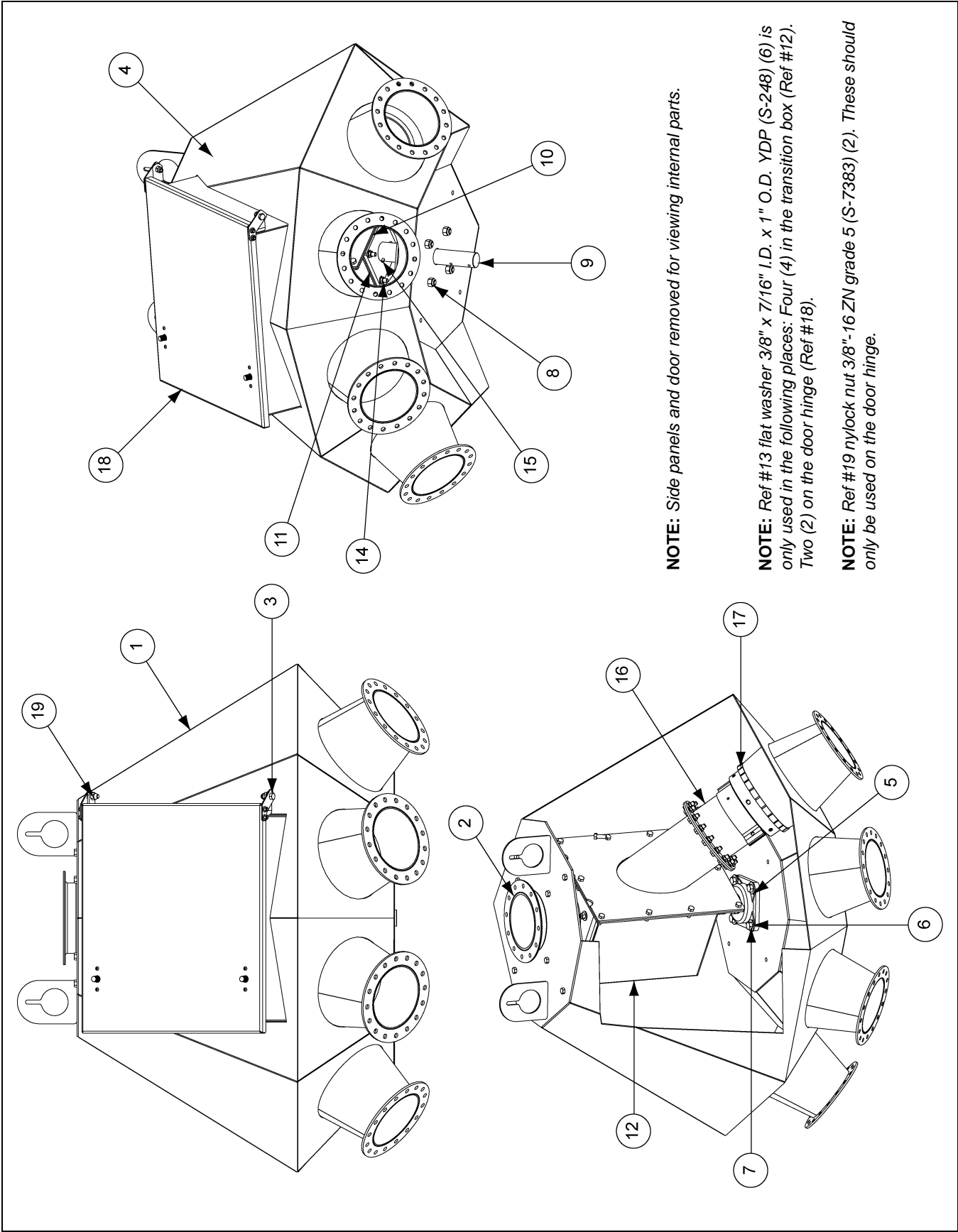


Figure 4D

1. 6" 4 Hole, 45° Distributor Assembly (DFB06445G) - ([See Pages 16-17.](#))
2. 6" 6 Hole, 45° Distributor Assembly (DFB06645G) - ([See Pages 18-19.](#))
3. 6" 8 Hole, 45° Distributor Assembly (DFB06845G) - ([See Pages 20-21.](#))
4. 8" 6 Hole, 45° Distributor Assembly (DFB08645G) - ([See Pages 22-23.](#))
5. 8" 8 Hole, 45° Distributor Assembly (DFB08845G) - ([See Pages 24-25.](#))
6. 8" 10 Hole, 45° Distributor Assembly (DFB081045G) - ([See Pages 26-27.](#))
7. 10" 6 Hole, 45° Distributor Assembly - Drawing A (DFB10645G) - ([See Pages 28-29.](#))
8. 10" 6 Hole, 45° Distributor Assembly - Drawing B (DFB10645G) - ([See Pages 30-31.](#))
9. 10" 8 Hole, 45° Distributor Assembly (DFB10845G) - ([See Pages 32-33.](#))
10. 10" 10 Hole, 45° Distributor Assembly (DFB101045G) - ([See Pages 34-35.](#))
11. 12" 4 Hole, 45° Distributor Assembly (DFB12445G) - ([See Pages 36-37.](#))
12. 12" 6 Hole, 45° Distributor Assembly (DFB12645G) - ([See Pages 38-39.](#))
13. 12" 8 Hole, 45° Distributor Assembly (DFB12845G) - ([See Pages 40-41.](#))
14. 12" 10 Hole, 45° Distributor Assembly (DFB121045G) - ([See Pages 42-43.](#))
15. 14" 4 Hole, 45° Distributor Assembly (DFB14445G) - ([See Pages 44-45.](#))
16. 14" 6 Hole, 45° Distributor Assembly (DFB14645G) - ([See Pages 46-47.](#))
17. 14" 8 Hole, 45° Distributor Assembly (DFB14845G) - ([See Pages 48-49.](#))

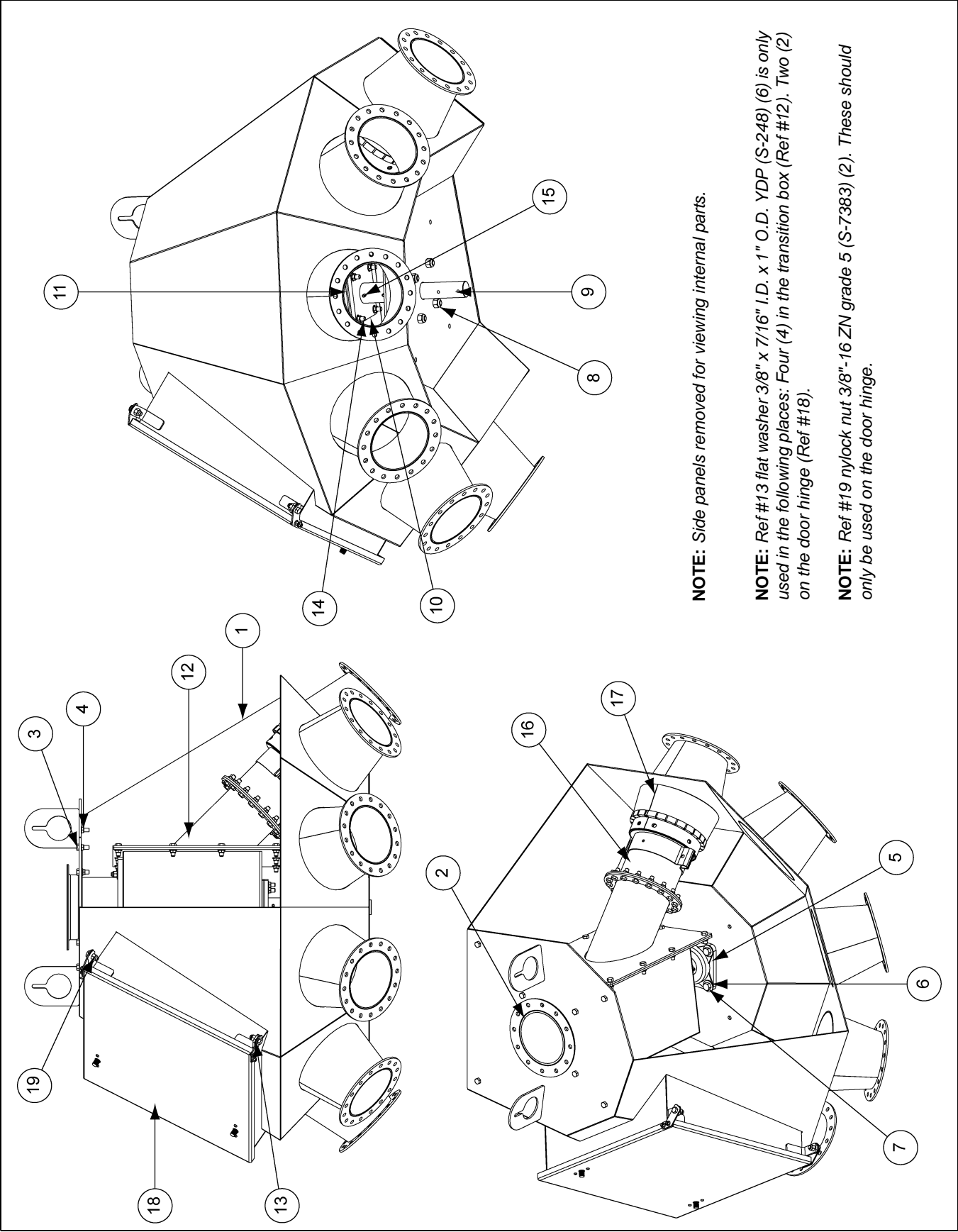
6" 4 Hole, 45° Distributor Assembly (DFB06445G)



6" 4 Hole, 45° Distributor Assembly (DFB06445G) Parts List

Ref #	Part #	Description	Qty
1	DFB0424G	6" 4 Hole Body Weldment Distributor	1
2	DFB0422	Inlet Sleeve Weldment	1
3	S-7469	Bolt, HHCS 3/8"-16 x 1" ZN Grade 5	26
4	S-968	Flange Nut 3/8"-16 ZN Grade 5 Wide Flange	28
5	KD-PBA0003	Bearing, 1-1/2" 4 Bolt	1
6	S-2120	Flat Washer 1/2" SAE ZN	4
7	S-8760	Bolt, HHCS 1/2"-13 x 1-1/2" ZN Grade 5	4
8	S-8260	Nylock Nut 1/2"-13 ZN Grade 5	4
9	DFB0210	Index Shaft	1
10	DFB0040	Transition Box Support Weldment	1
11	DFB0043	Plate, Transition Box Spacer	2
12	DFB0361	6" Transition Box with Liner	1
13	S-248	Flat Washer 3/8" x 7/16" I.D. x 1" O.D. YDP	6
14	S-7515	Bolt, HHCS 3/8"-16 x 1-1/2" Grade 5	4
15	S-9288	Spring Pin 1/4" x 2-1/2" Plain Steel Slotted Rolled	3
16	DFB0420	6" 6 Hole Transition Tube Extension Weldment	1
17	DFB0374	Brush/Mount Assembly - 6"	1
18	DFB0032G	Door/Hinge Bracket Assembly	1
19	S-7383	Nylock Nut 3/8"-16 ZN Grade 5	2

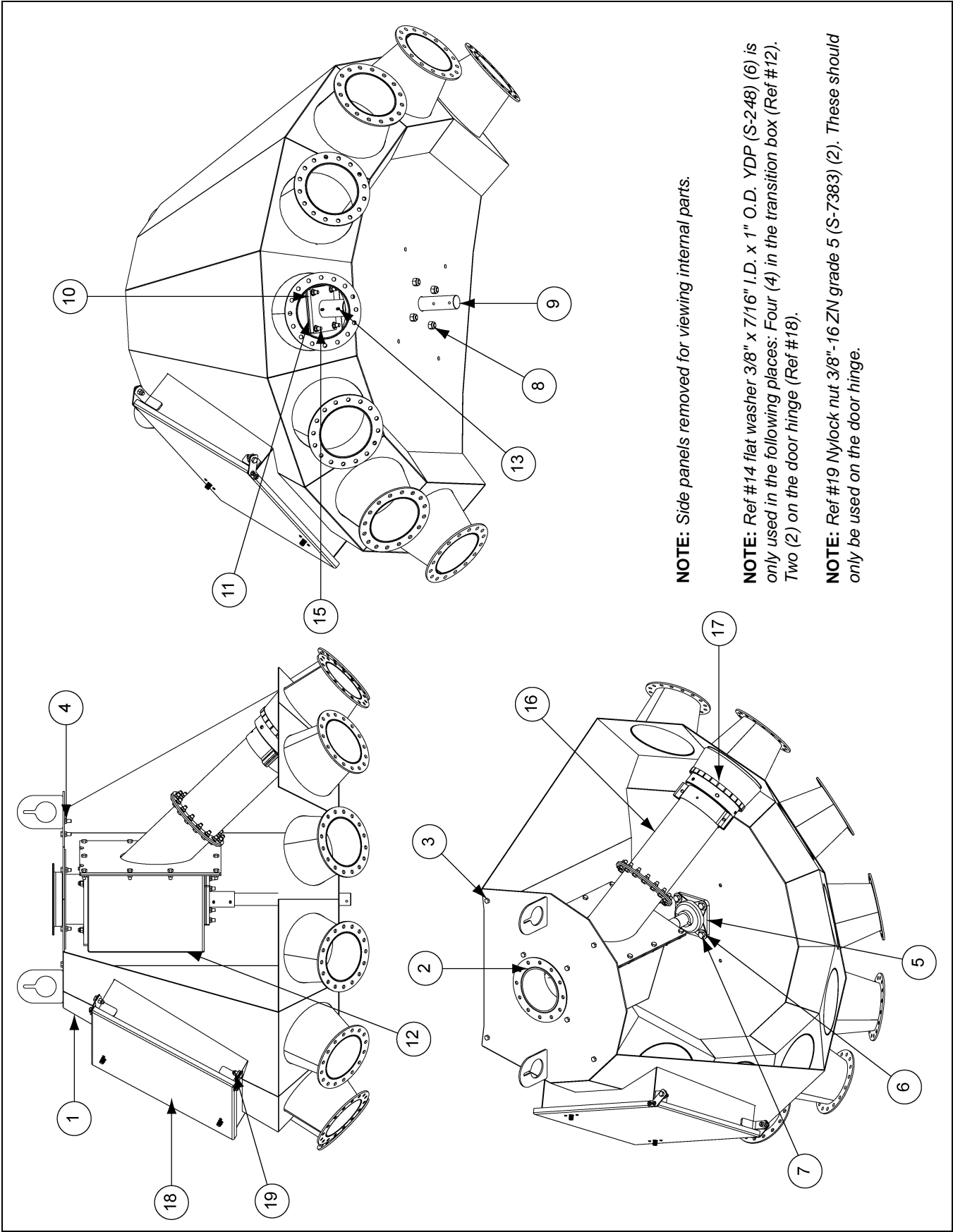
6" 6 Hole, 45° Distributor Assembly (DFB06645G)



6" 6 Hole, 45° Distributor Assembly (DFB06645G) Parts List

Ref #	Part #	Description	Qty
1	DFB0408G	6" 6 Hole Body Weldment Distributor	1
2	DFB0422	6" 6 Hole Inlet Sleeve Weldment	1
3	S-7469	Bolt, HHCS 3/8"-16 x 1" ZN Grade 5	26
4	S-968	Flange Nut 3/8"-16 ZN Grade 5 Wide Flange	28
5	KD-PBA0003	Bearing, 1-1/2" 4 Bolt	1
6	S-2120	Flat Washer 1/2" SAE ZN	4
7	S-8760	Bolt, HHCS 1/2"-13 x 1-1/2" ZN Grade 5	4
8	S-8260	Nylock Nut 1/2"-13 ZN Grade 5	4
9	DFB0210	Index Shaft	1
10	DFB0040	Transition Box Support Weldment	1
11	DFB0043	Plate, Transition Box Spacer	2
12	DFB0361	6" Transition Box with Liner	1
13	S-248	Flat Washer 3/8" x 7/16" I.D. x 1" O.D. YDP	6
14	S-7515	Bolt, HHCS 3/8"-16 x 1-1/2" Grade 5	4
15	S-9288	Spring Pin 1/4" x 2-1/2" Plain Steel Slotted Rolled	3
16	DFB0420	6" 6 Hole Transition Tube Extension Weldment	1
17	DFB0374	Brush/Mount Assembly - 6"	1
18	DFB0032G	Door/Hinge Bracket Assembly	1
19	S-7383	Nylock Nut 3/8"-16 ZN Grade 5	2

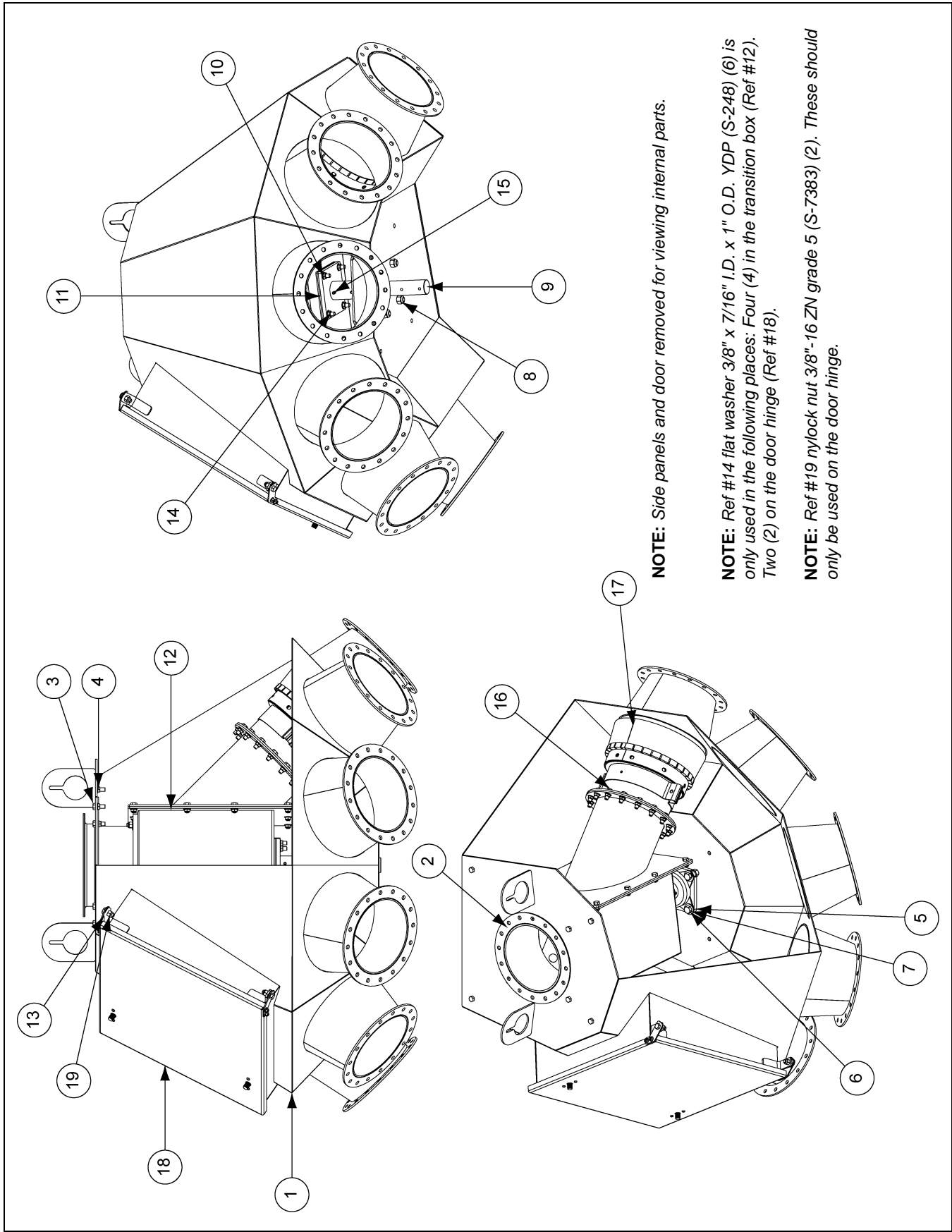
6" 8 Hole, 45° Distributor Assembly (DFB06845G)



6" 8 Hole, 45° Distributor Assembly (DFB06845G) Parts List

Ref #	Part #	Description	Qty
1	DFB0347G	6" 8 Hole Body Weldment Distributor	1
2	DFB0381	6" 8 Hole Inlet Sleeve Weldment	1
3	S-7469	Bolt, HHCS 3/8"-16 x 1" ZN Grade 5	26
4	S-968	Flange Nut 3/8"-16 ZN Grade 5 Wide Flange	28
5	KD-PBA0003	Bearing, 1-1/2" 4 Bolt	1
6	S-2120	Flat Washer 1/2" SAE ZN	4
7	S-8760	Bolt, HHCS 1/2"-13 x 1-1/2" ZN Grade 5	4
8	S-8260	Nylock Nut 1/2"-13 ZN Grade 5	4
9	DFB0360	Index Shaft 6" 8 Hole Distributor	1
10	DFB0040	Transition Box Support Weldment	1
11	DFB0043	Plate, Transition Box Spacer	2
12	DFB0361	6" Transition Box with Liner	1
13	S-9288	Spring Pin 1/4" x 2-1/2" Plain Steel Slotted Rolled	3
14	S-248	Flat Washer 3/8" x 7/16" I.D. x 1" O.D. YDP	6
15	S-7515	Bolt, HHCS 3/8"-16 x 1-1/2" Grade 5	4
16	DFB0372	6" 8 Hole Transition Tube Extension Weldment	1
17	DFB0374	Brush/Mount Assembly - 6"	1
18	DFB0032G	Door/Hinge Bracket Assembly	1
19	S-7383	Nylock Nut 3/8"-16 ZN Grade 5	2

8" 6 Hole, 45° Distributor Assembly (DFB08645G)



8" 6 Hole, 45° Distributor Assembly (DFB08645G) Parts List

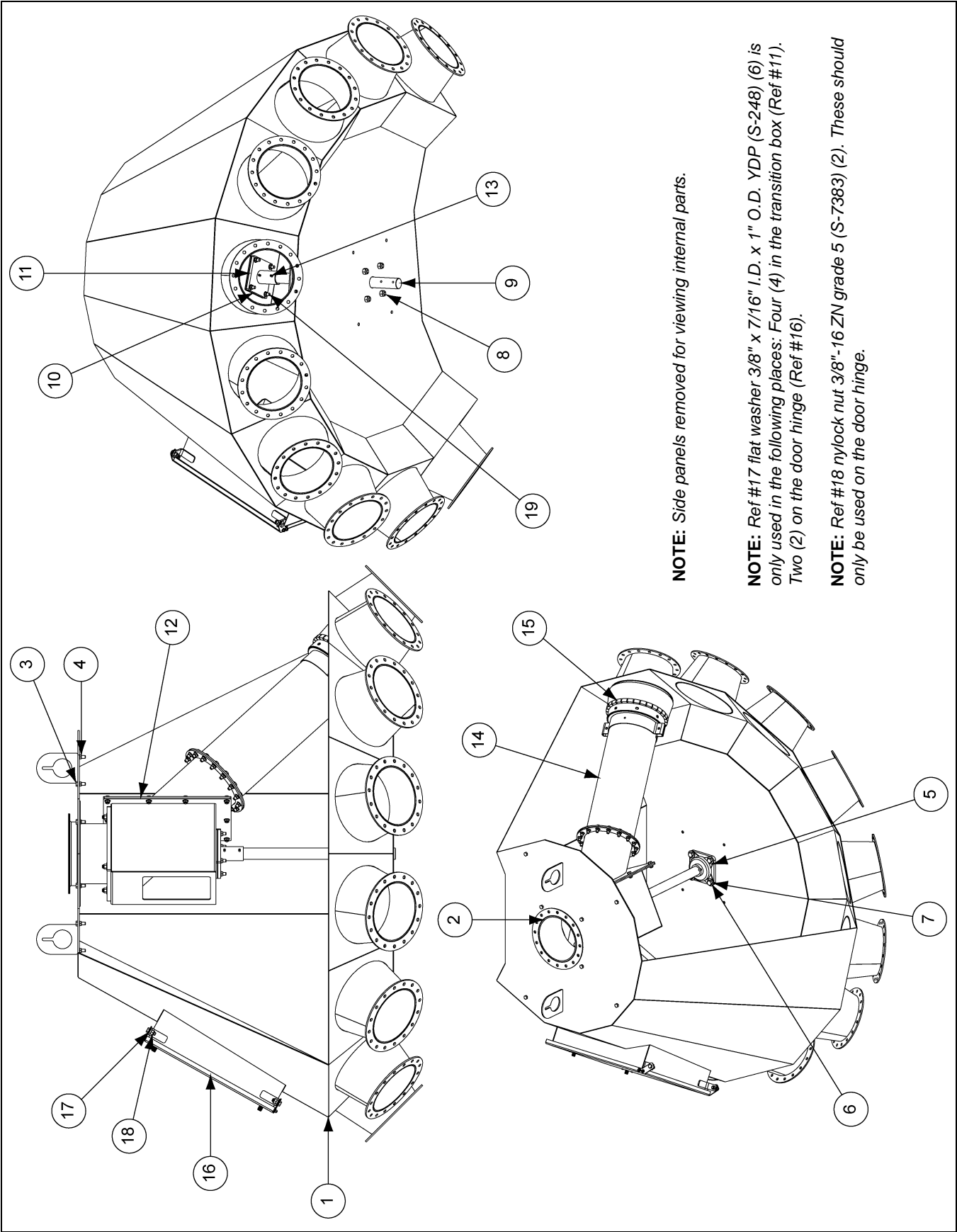
Ref #	Part #	Description	Qty
1	DFB0199G	8" 6 Hole Body Weldment Distributor	1
2	DFB0196	8" Inlet Sleeve Weldment Distributor	1
3	S-7469	Bolt, HHCS 3/8"-16 x 1" ZN Grade 5	26
4	S-968	Flange Nut 3/8"-16 ZN Grade 5 Wide Flange	28
5	KD-PBA0003	Bearing, 1-1/2" 4 Bolt	1
6	S-2120	Flat Washer 1/2" SAE ZN	4
7	S-8760	Bolt, HHCS 1/2"-13 x 1-1/2" ZN Grade 5	4
8	S-8260	Nylock Nut 1/2"-13 ZN Grade 5	4
9	DFB0210	Index Shaft 8" 6 Hole Distributor	1
10	DFB0040	Transition Box Support Weldment	1
11	DFB0043	Plate, Transition Box Spacer	2
12	DFB0176	8" Transition Box with Liner	1
13	S-248	Flat Washer 3/8" x 7/16" I.D. x 1" O.D. YDP	6
14	S-7515	Bolt, HHCS 3/8"-16 x 1-1/2" Grade 5	4
15	S-9288	Spring Pin 1/4" x 2-1/2" Plain Steel Slotted Rolled	3
16	DFB0211	8" 6 Hole Transition Tube Extension Weldment	1
17	DFB0189	Brush/Mount Assembly - 8"	1
18	DFB0032G	Door/Hinge Bracket Assembly	1
19	S-7383	Nylock Nut 3/8"-16 ZN Grade 5	2

PNEG-1385 Farm/Commercial Distributor

8" 8 Hole, 45° Distributor Assembly (DFB08845G) Parts List

Ref #	Part #	Description	Qty
1	DFB0161G	8" 8 Hole Body Weldment Distributor	1
2	DFB0196	8" Inlet Sleeve Weldment Distributor	1
3	S-7469	Bolt, HHCS 3/8"-16 x 1" ZN Grade 5	26
4	S-968	Flange Nut 3/8"-16 ZN Grade 5 Wide Flange	28
5	KD-PBA0003	Bearing, 1-1/2" 4 Bolt	1
6	S-2120	Flat Washer 1/2" SAE ZN	4
7	S-8760	Bolt, HHCS 1/2"-13 x 1-1/2" ZN Grade 5	4
8	S-8260	Nylock Nut 1/2"-13 ZN Grade 5	4
9	DFB0175	Indexing Shaft 8" 8 Hole Distributor	1
10	DFB0040	Transition Box Support Weldment	1
11	DFB0043	Plate, Transition Box Spacer	2
12	DFB0176	8" Transition Box with Liner	1
13	S-9288	Spring Pin 1/4" x 2-1/2" Plain Steel Slotted Rolled	3
14	DFB0187	8" 8 Hole Transition Tube Extension Weldment	1
15	DFB0189	Brush/Mount Assembly - 8"	1
16	DFB0032G	Door/Hinge Bracket Assembly	1
17	S-248	Flat Washer 3/8" x 7/16" I.D. x 1" O.D. YDP	6
18	S-7383	Nylock Nut 3/8"-16 ZN Grade 5	2
19	S-7515	Bolt, HHCS 3/8"-16 x 1-1/2" Grade 5	4

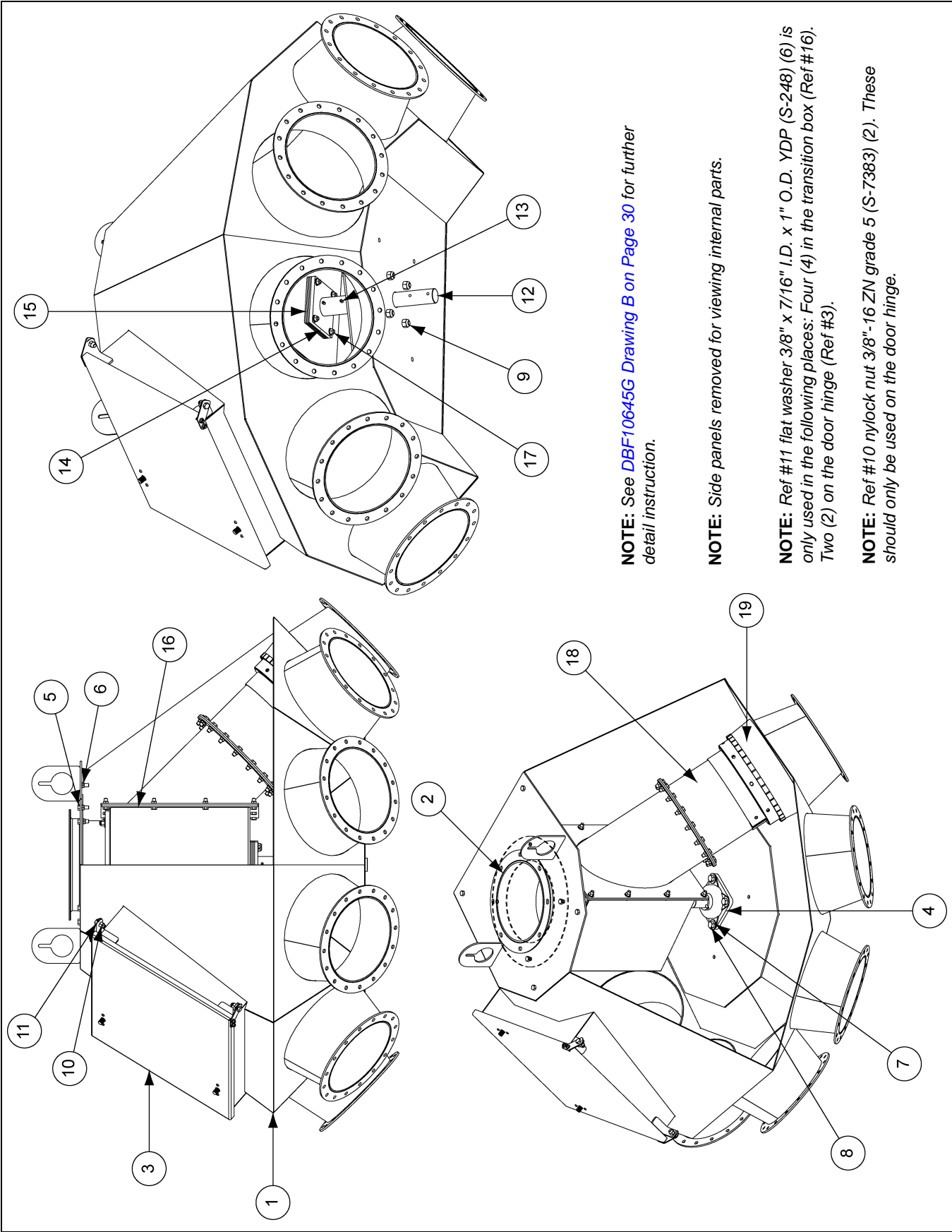
8" 10 Hole, 45° Distributor Assembly (DFB081045G)



8" 10 Hole, 45° Distributor Assembly (DFB081045G) Parts List

Ref #	Part #	Description	Qty
1	DFB0213G	8" 10 Hole Body Weldment Distributor	1
2	DFB0196	8" Inlet Sleeve Weldment Distributor	1
3	S-7469	Bolt, HHCS 3/8"-16 x 1" ZN Grade 5	26
4	S-968	Flange Nut 3/8"-16 ZN Grade 5 Wide Flange	28
5	KD-PBA0003	Bearing, 1-1/2" 4 Bolt	1
6	S-2120	Flat Washer 1/2" SAE ZN	4
7	S-8760	Bolt, HHCS 1/2"-13 x 1-1/2" ZN Grade 5	4
8	S-8260	Nylock Nut 1/2"-13 ZN Grade 5	4
9	DFB0226	Indexing Shaft 8" 10 Hole Distributor	1
10	DFB0040	Transition Box Support Weldment	1
11	DFB0043	Plate, Transition Box Spacer	2
12	DFB0176	8" Transition Box with Liner	1
13	S-9288	Spring Pin 1/4" x 2-1/2" Plain Steel Slotted Rolled	3
14	DFB0227	8" 10 Hole Transition Tube Extension Weldment	1
15	DFB0189	Brush/Mount Assembly - 8"	1
16	DFB0032G	Door/Hinge Bracket Assembly	1
17	S-248	Flat Washer 3/8" x 7/16" I.D. x 1" O.D. YDP	6
18	S-7383	Nylock Nut 3/8"-16 ZN Grade 5	2
19	S-7515	Bolt, HHCS 3/8"-16 x 1-1/2" Grade 5	4

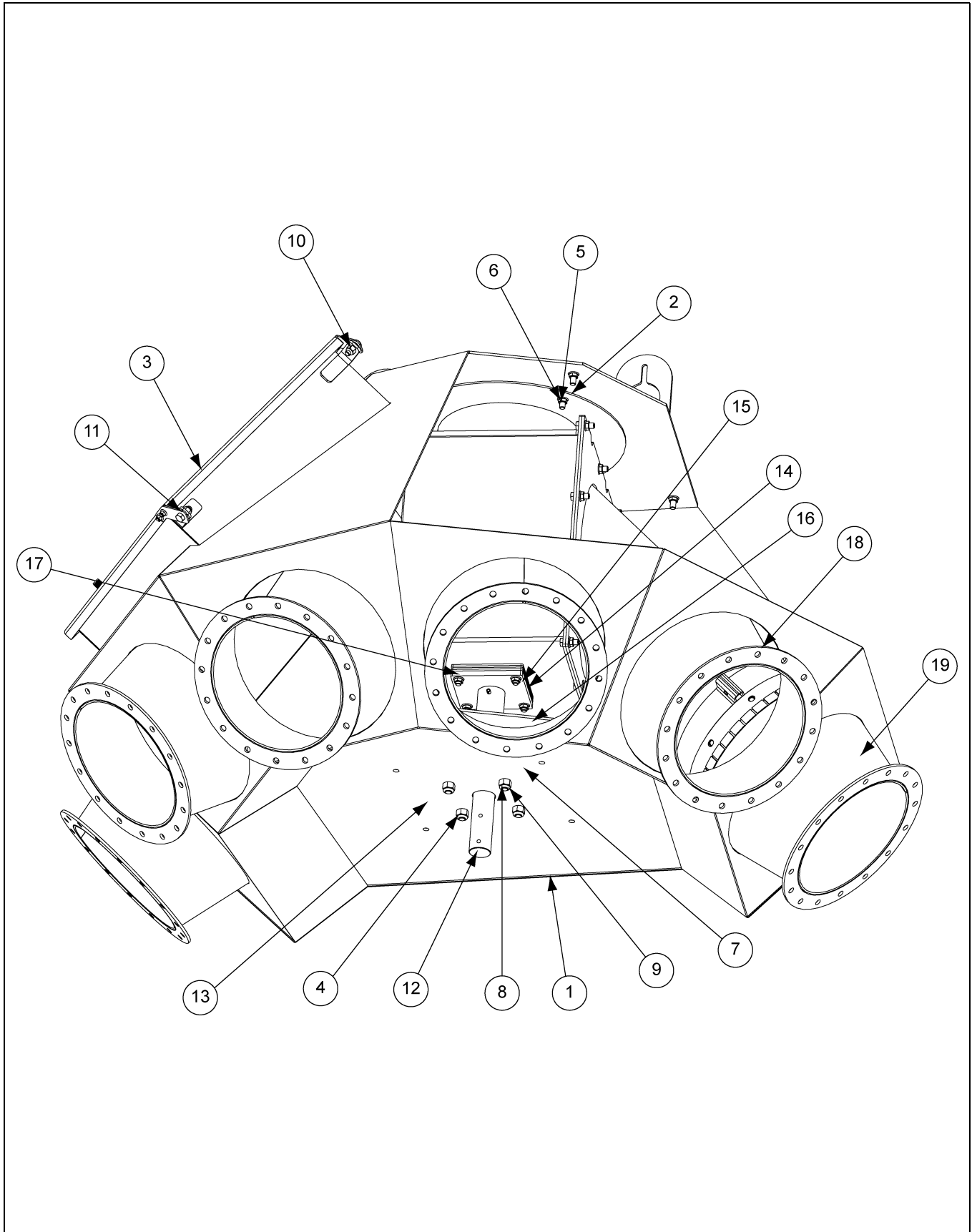
10" 6 Hole, 45° Distributor Assembly - Drawing A (DFB10645G)



10" 6 Hole, 45° Distributor Assembly - Drawing A (DFB10645G) Parts List

Ref #	Part #	Description	Qty
1	DFB0001G	10" 6 Hole Body Weldment Distributor	1
2	DFB0035	10" Inlet Sleeve Weldment Distributor	1
3	DFB0032G	Door/Hinge Bracket Assembly	1
4	KD-PBA0003	Bearing, 1-1/2" 4 Bolt	1
5	S-7469	Bolt, HHCS 3/8"-16 x 1" ZN Grade 5	26
6	S-968	Flange Nut 3/8"-16 ZN Grade 5 Wide Flange	28
7	S-2120	Flat Washer 1/2" SAE ZN	4
8	S-8760	Bolt, HHCS 1/2"-13 x 1-1/2" ZN Grade 5	4
9	S-8260	Nylock Nut 1/2"-13 ZN Grade 5	4
10	S-7383	Nylock Nut 3/8"-16 ZN Grade 5	2
11	S-248	Flat Washer 3/8" x 7/16" I.D. x 1" O.D. YDP	6
12	DFB0045	Indexing Shaft 10" 6 Hole Distributor	1
13	S-9288	Spring Pin 1/4" x 2-1/2" Plain Steel Slotted Rolled	3
14	DFB0040	Transition Box Support Weldment	1
15	DFB0043	Plate, Transition Box Spacer	4
16	DFB0015	10" Transition Box with Liner	1
17	S-7515	Bolt, HHCS 3/8"-16 x 1-1/2" Grade 5	4
18	DFB0024	10" 6 Hole Transition Tube Extension Weldment	1
19	DFB0060	Brush/Mount Assembly - 10"	1

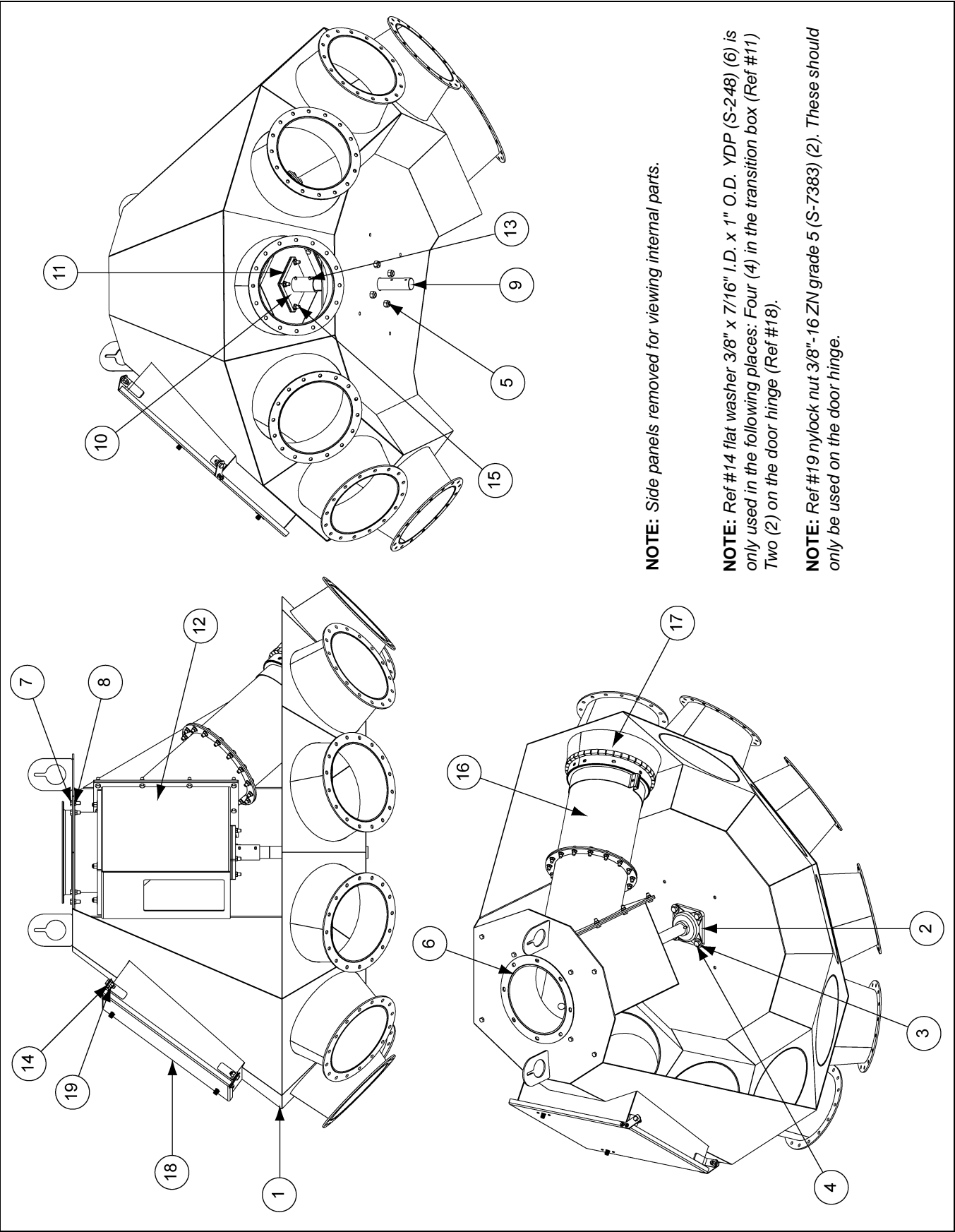
10" 6 Hole, 45° Distributor Assembly - Drawing B (DFB10645G)



10" 6 Hole, 45° Distributor Assembly - Drawing B (DFB10645G) Parts List

Ref #	Part #	Description	Qty
1	DFB0001G	10" 6 Hole Body Weldment Distributor	1
2	DFB0035	10" Inlet Sleeve Weldment Distributor	1
3	DFB0032G	Door/Hinge Bracket Assembly	1
4	KD-PBA0003	Bearing, 1-1/2" 4 Bolt	1
5	S-7469	Bolt, HHCS 3/8"-16 x 1" ZN Grade 5	26
6	S-968	Flange Nut 3/8"-16 ZN Grade 5 Wide Flange	28
7	S-2120	Flat Washer 1/2" SAE ZN	4
8	S-8760	Bolt, HHCS 1/2"-13 x 1-1/2" ZN Grade 5	4
9	S-8260	Nylock Nut 1/2"-13 ZN Grade 5	4
10	S-7383	Nylock Nut 3/8"-16 ZN Grade 5	2
11	S-248	Flat Washer 3/8" x 7/16" I.D. x 1" O.D. YDP	6
12	DFB0045	Indexing Shaft 10" 6 Hole Distributor	1
13	S-9288	Spring Pin 1/4" x 2-1/2" Plain Steel Slotted Rolled	3
14	DFB0040	Transition Box Support Weldment	1
15	DFB0043	Plate, Transition Box Spacer	4
16	DFB0015	10" Transition Box with Liner	1
17	S-7515	Bolt, HHCS 3/8"-16 x 1-1/2" Grade 5	4
18	DFB0024	10" 6 Hole Transition Tube Extension Weldment	1
19	DFB0060	Brush/Mount Assembly - 10"	1

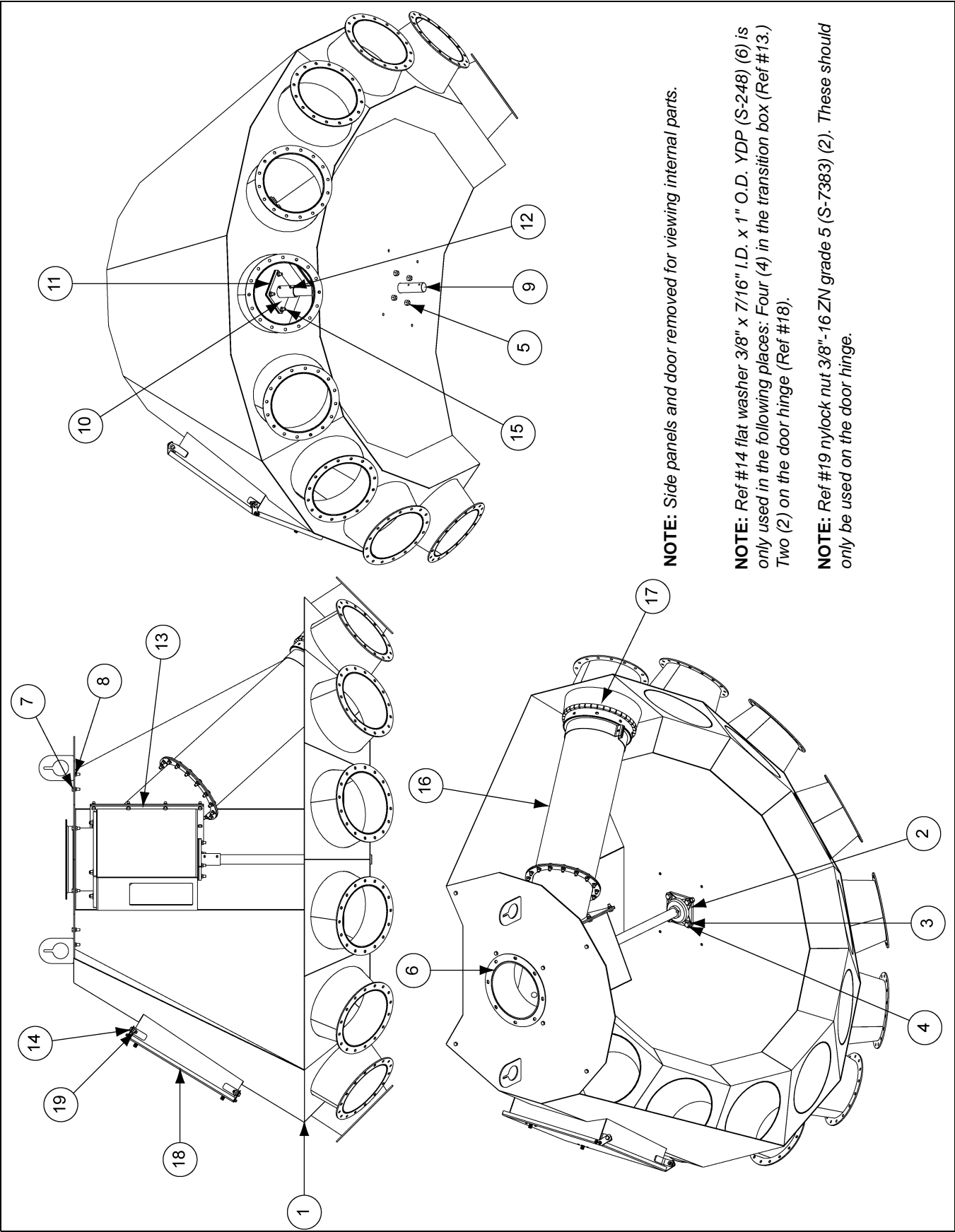
10" 8 Hole, 45° Distributor Assembly (DFB10845G)



10" 8 Hole, 45° Distributor Assembly (DFB10845G) Parts List

Ref #	Part #	Description	Qty
1	DFB0063G	10" 8 Hole Body Weldment Distributor	1
2	KD-PBA0003	Bearing, 1-1/2" 4 Bolt	1
3	S-2120	Flat Washer 1/2" SAE ZN	4
4	S-8760	Bolt, HHCS 1/2"-13 x 1-1/2" ZN Grade 5	4
5	S-8260	Nylock Nut 1/2"-13 ZN Grade 5	4
6	DFB0035	10" Inlet Sleeve Weldment Distributor	1
7	S-7469	Bolt, HHCS 3/8"-16 x 1" ZN Grade 5	26
8	S-968	Flange Nut 3/8"-16 ZN Grade 5 Wide Flange	28
9	DFB0142	Index Shaft 10" 8 Hole Distributor	1
10	DFB0040	Transition Box Support Weldment	1
11	DFB0043	Plate, Transition Box Spacer	2
12	DFB0015	10" Transition Box with Liner	1
13	S-9288	Spring Pin 1/4" x 2-1/2" Plain Steel Slotted Rolled	3
14	S-248	Flat Washer 3/8" x 7/16" I.D. x 1" O.D. YDP	6
15	S-7515	Bolt, HHCS 3/8"-16 x 1-1/2" Grade 5	4
16	DFB0079	10" 8 Hole Transition Tube Extension Weldment	1
17	DFB0060	Brush/Mount Assembly - 10"	1
18	DFB0032G	Door/Hinge Bracket Assembly	1
19	S-7383	Nylock Nut 3/8"-16 ZN Grade 5	2

10" 10 Hole, 45° Distributor Assembly (DFB101045G)



10" 10 Hole, 45° Distributor Assembly (DFB101045G) Parts List

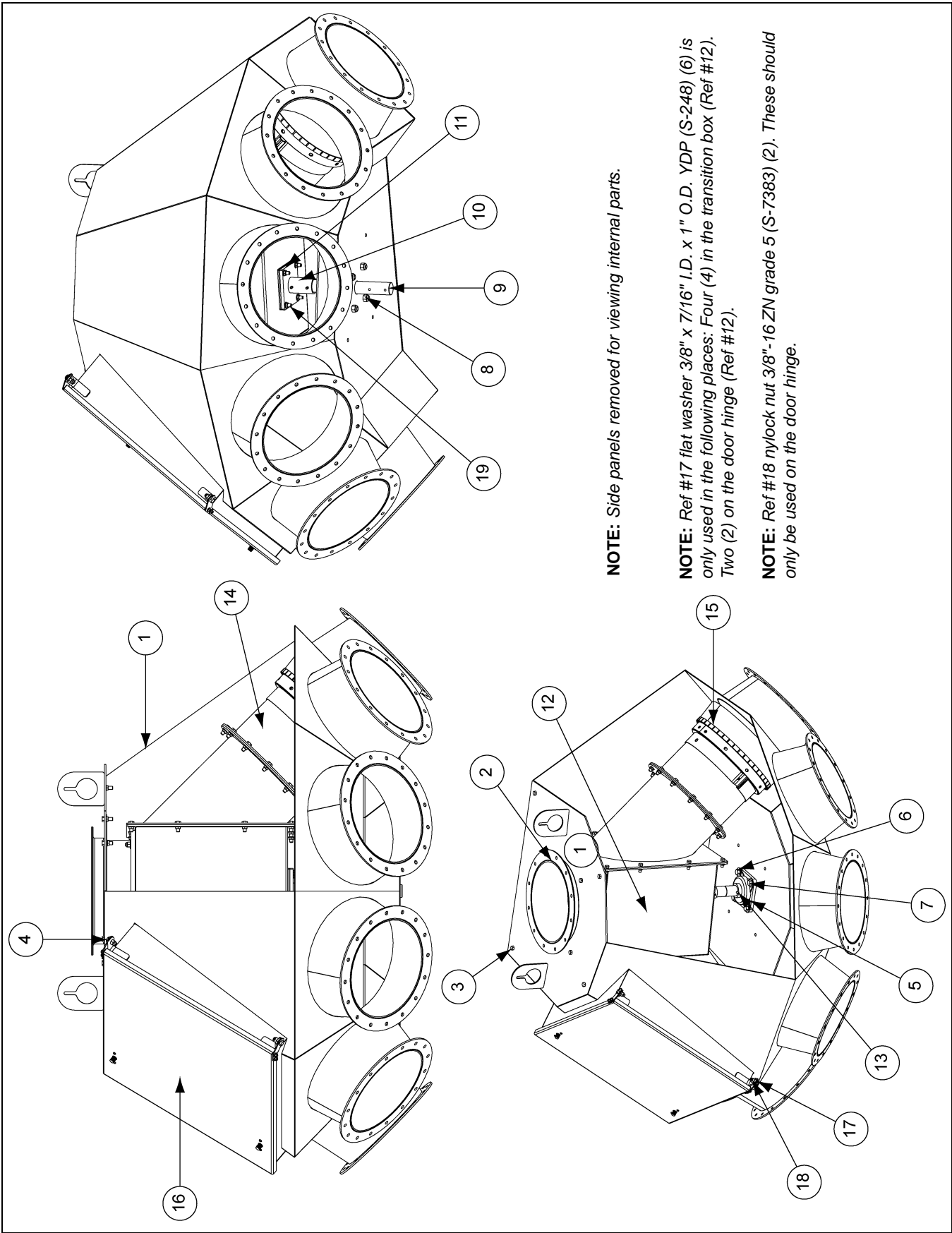
Ref #	Part #	Description	Qty
1	DFB0143G	10" 10 Hole Body Weldment Distributor	1
2	KD-PBA0003	Bearing, 1-1/2" 4 Bolt	1
3	S-2120	Flat Washer 1/2" SAE ZN	4
4	S-8760	Bolt, HHCS 1/2"-13 x 1-1/2" ZN Grade 5	4
5	S-8260	Nylock Nut 1/2"-13 ZN Grade 5	4
6	DFB0035	10" Inlet Sleeve Weldment Distributor	1
7	S-7469	Bolt, HHCS 3/8"-16 x 1" ZN Grade 5	26
8	S-968	Flange Nut 3/8"-16 ZN Grade 5 Wide Flange	28
9	DFB0144	Index Shaft 10" 10 Hole Distributor	1
10	DFB0040	Transition Box Support Weldment	1
11	DFB0043	Plate, Transition Box Spacer	2
12	S-9288	Spring Pin 1/4" x 2-1/2" Plain Steel Slotted Rolled	3
13	DFB0015	10" Transition Box with Liner	1
14	S-248	Flat Washer 3/8" x 7/16" I.D. x 1" O.D. YDP	6
15	S-7515	Bolt, HHCS 3/8"-16 x 1-1/2" Grade 5	4
16	DFB0093	10" 10 Hole Transition Tube Extension Weldment	1
17	DFB0060	Brush/Mount Assembly - 10"	1
18	DFB0032G	Door/Hinge Bracket Assembly	1
19	S-7383	Nylock Nut 3/8"-16 ZN Grade 5	2

PNEG-1385 Farm/Commercial Distributor

12" 4 Hole, 45° Distributor Assembly (DFB12445G) Parts List

Ref #	Part #	Description	Qty
1	DFB0230G	12" 4 Hole Body Weldment Distributor	1
2	DFB0136	12" Inlet Sleeve Weldment Distributor	1
3	S-7469	Bolt, HHCS 3/8"-16 x 1" ZN Grade 5	22
4	S-968	Flange Nut 3/8"-16 ZN Grade 5 Wide Flange	24
5	KD-PBA0003	Bearing, 1-1/2" 4 Bolt	1
6	S-2120	Flat Washer 1/2" SAE ZN	4
7	S-8760	Bolt, HHCS 1/2"-13 x 1-1/2" ZN Grade 5	4
8	S-8260	Nylock Nut 1/2"-13 ZN Grade 5	4
9	DFB0158	Index Shaft 12" 6 Hole Distributor	1
10	DFB0040	Transition Box Support Weldment	1
11	DFB0043	Plate, Transition Box Spacer	2
12	DFB0114	12" Transition Box with Liner	1
13	S-9288	Spring Pin 1/4" x 2-1/2" Plain Steel Slotted Rolled	3
14	DFB0159	12" 6 Hole Transition Tube Extension Weldment	1
15	DFB0127	Brush/Mount Assembly - 12"	1
16	DFB0146G	Door/Hinge Bracket Assembly 12"	1
17	S-248	Flat Washer 3/8" x 7/16" I.D. x 1" O.D. YDP	6
18	S-7383	Nylock Nut 3/8"-16 ZN Grade 5	2
19	S-7515	Bolt, HHCS 3/8"-16 x 1-1/2" Grade 5	4

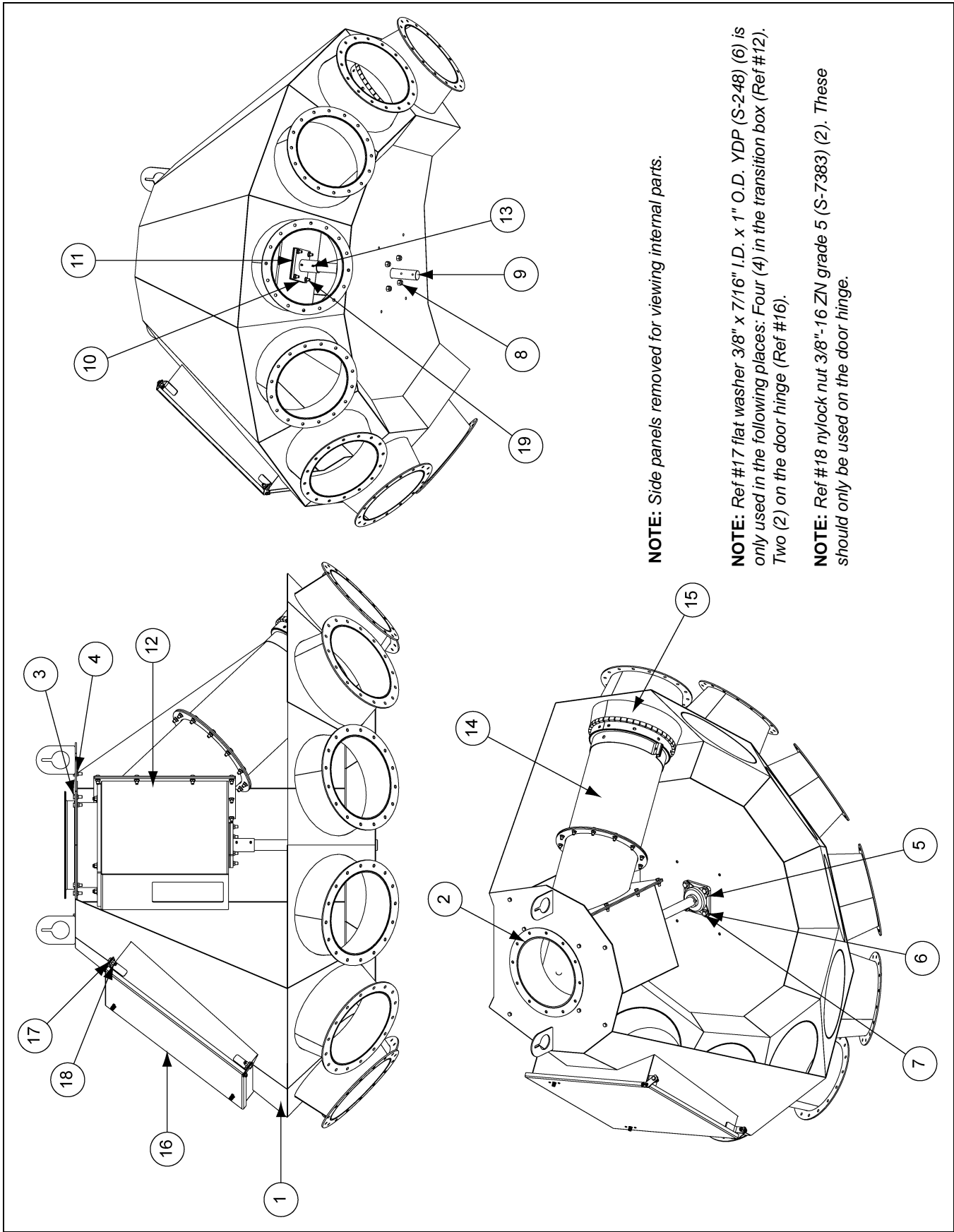
12" 6 Hole, 45° Distributor Assembly (DFB12645G)



12" 6 Hole, 45° Distributor Assembly (DFB12645G) Parts List

Ref #	Part #	Description	Qty
1	DFB0147G	12" 6 Hole Body Weldment Distributor	1
2	DFB0136	12" Inlet Sleeve Weldment Distributor	1
3	S-7469	Bolt, HHCS 3/8"-16 x 1" ZN Grade 5	22
4	S-968	Flange Nut 3/8"-16 ZN Grade 5 Wide Flange	24
5	KD-PBA0003	Bearing, 1-1/2" 4 Bolt	1
6	S-2120	Flat Washer 1/2" SAE ZN	4
7	S-8760	Bolt, HHCS 1/2"-13 x 1-1/2" ZN Grade 5	4
8	S-8260	Nylock Nut 1/2"-13 ZN Grade 5	4
9	DFB0158	Index Shaft 12" 6 Hole Distributor	1
10	DFB0040	Transition Box Support Weldment	1
11	DFB0043	Plate, Transition Box Spacer	2
12	DFB0114	12" Transition Box with Liner	1
13	S-9288	Spring Pin 1/4" x 2-1/2" Plain Steel Slotted Rolled	3
14	DFB0159	12" 6 Hole Transition Tube Extension Weldment	1
15	DFB0127	Brush/Mount Assembly - 12"	1
16	DFB0146G	Door/Hinge Bracket Assembly 12"	1
17	S-248	Flat Washer 3/8" x 7/16" I.D. x 1" O.D. YDP	6
18	S-7383	Nylock Nut 3/8"-16 ZN Grade 5	2
19	S-7515	Bolt, HHCS 3/8"-16 x 1-1/2" Grade 5	4

12" 8 Hole, 45° Distributor Assembly (DFB12845G)



12" 8 Hole, 45° Distributor Assembly (DFB12845G) Parts List

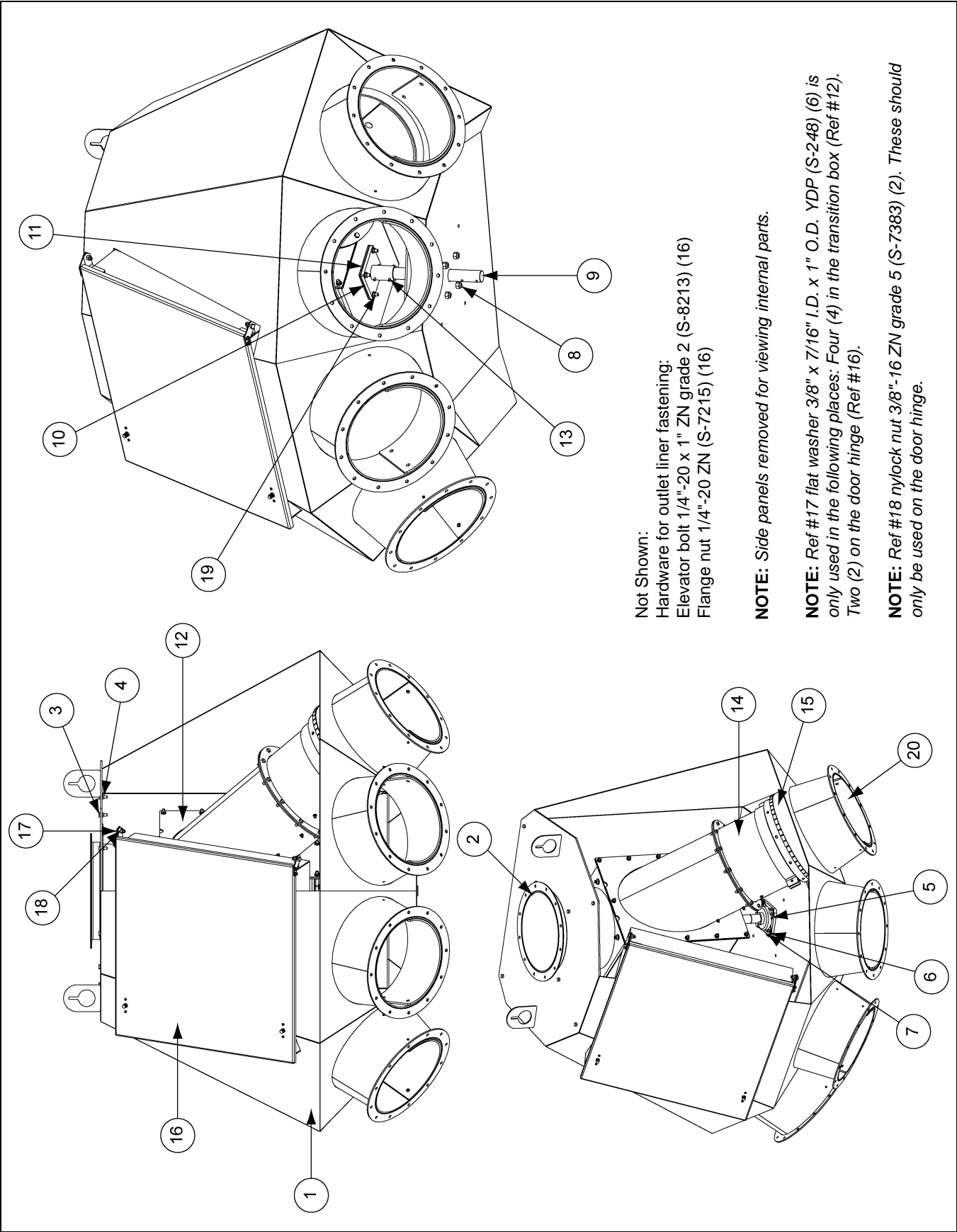
Ref #	Part #	Description	Qty
1	DFB0100G	12" 8 Hole Body Weldment Distributor	1
2	DFB0136	12" Inlet Sleeve Weldment Distributor	1
3	S-7469	Bolt, HHCS 3/8"-16 x 1" ZN Grade 5	22
4	S-968	Flange Nut 3/8"-16 ZN Grade 5 Wide Flange	24
5	KD-PBA0003	Bearing, 1-1/2" 4 Bolt	1
6	S-2120	Flat Washer 1/2" SAE ZN	4
7	S-8760	Bolt, HHCS 1/2"-13 x 1-1/2" ZN Grade 5	4
8	S-8260	Nylock Nut 1/2"-13 ZN Grade 5	4
9	DFB0145	Index Shaft 12" 8 Hole Distributor	1
10	DFB0040	Transition Box Support Weldment	1
11	DFB0043	Plate, Transition Box Spacer	2
12	DFB0114	12" Transition Box with Liner	1
13	S-9288	Spring Pin 1/4" x 2-1/2" Plain Steel Slotted Rolled	3
14	DFB0125	12" 8 Hole Transition Tube Extension Weldment	1
15	DFB0127	Brush/Mount Assembly - 12"	1
16	DFB0146G	Door/Hinge Bracket Assembly 12"	1
17	S-248	Flat Washer 3/8" x 7/16" I.D. x 1" O.D. YDP	6
18	S-7383	Nylock Nut 3/8"-16 ZN Grade 5	2
19	S-7515	Bolt, HHCS 3/8"-16 x 1-1/2" Grade 5	4

PNEG-1385 Farm/Commercial Distributor

12" 10 Hole, 45° Distributor Assembly (DFB121045G) Parts List

Ref #	Part #	Description	Qty
1	DFB0331G	12" 10 Hole Body Weldment Distributor	1
2	KD-PBA0003	Bearing, 1-1/2" 4 Bolt	1
3	S-2120	Flat Washer 1/2" SAE ZN	4
4	S-8760	Bolt, HHCS 1/2"-13 x 1-1/2" ZN Grade 5	4
5	S-8260	Nylock Nut 1/2"-13 ZN Grade 5	4
6	S-7469	Bolt, HHCS 3/8"-16 x 1" ZN Grade 5	22
7	DFB0344	Index Shaft 12" 10 Hole Distributor	1
8	DFB0040	Transition Box Support Weldment	1
9	DFB0043	Plate, Transition Box Spacer	2
10	S-9288	Spring Pin 1/4" x 2-1/2" Plain Steel Slotted Rolled	3
11	DFB0114	12" Transition Box with Liner	1
12	S-248	Flat Washer 3/8" x 7/16" I.D. x 1" O.D. YDP	6
13	S-7515	Bolt, HHCS 3/8"-16 x 1-1/2" Grade 5	4
14	S-968	Flange Nut 3/8"-16 ZN Grade 5 Wide Flange	24
15	DFB0136	12" Inlet Sleeve Weldment Distributor	1
16	DFB0345	12" 10 Hole Transition Tube Extension Weldment	1
17	DFB0127	Brush/Mount Assembly - 12"	1
18	DFB0146G	Door/Hinge Bracket Assembly 12"	1
19	S-7383	Nylock Nut 3/8"-16 ZN Grade 5	2

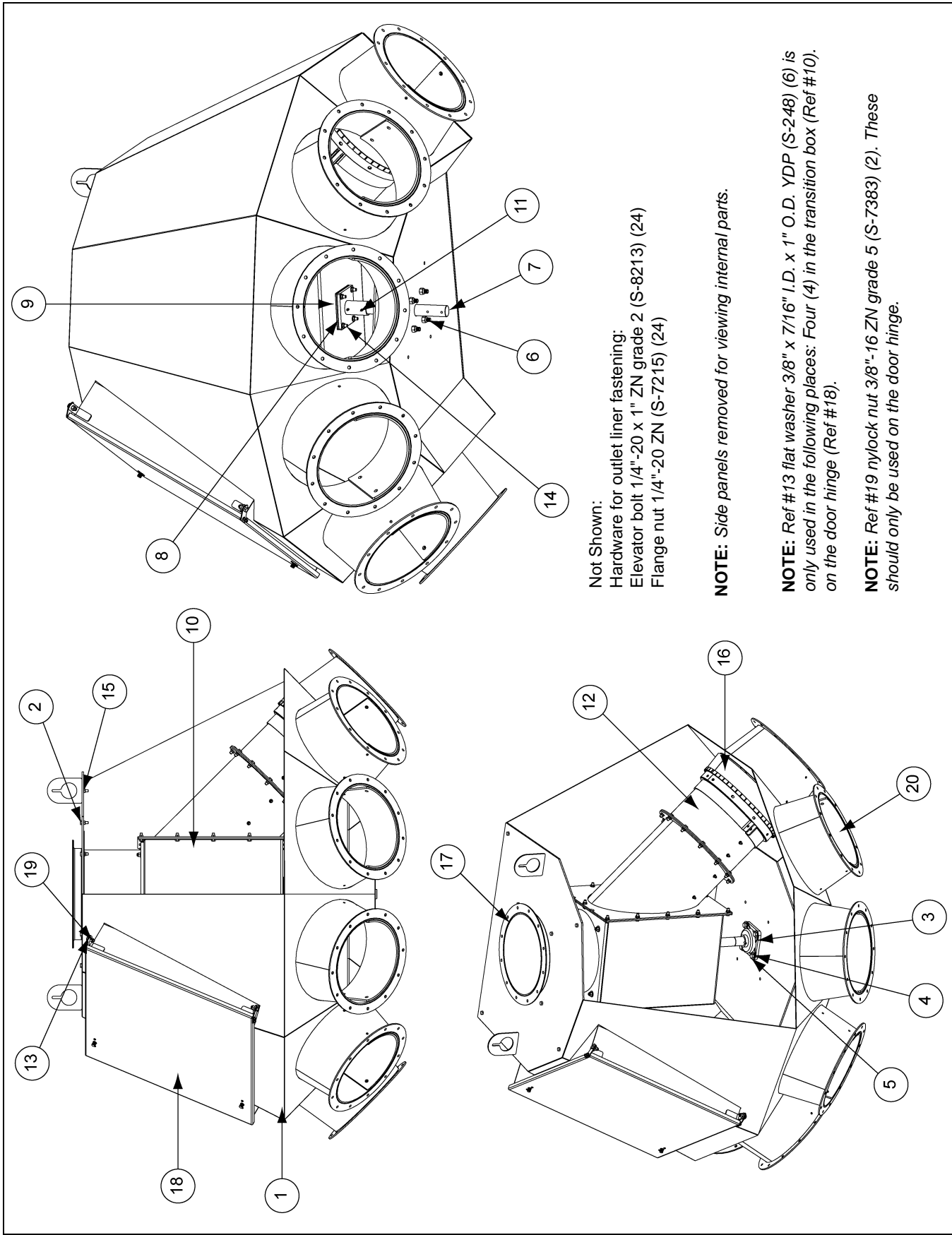
14" 4 Hole, 45° Distributor Assembly (DFB14445G)



14" 4 Hole, 45° Distributor Assembly (DFB14445G) Parts List

Ref #	Part #	Description	Qty
1	DFB0315G	14" 4 Hole Body Weldment Distributor	1
2	DFB0313	Inlet Sleeve Weldment	1
3	S-7469	Bolt, HHCS 3/8"-16 x 1" ZN Grade 5	22
4	S-968	Flange Nut 3/8"-16 ZN Grade 5 Wide Flange	24
5	KD-PBA0003	Bearing, 1-1/2" 4 Bolt	1
6	S-2120	Flat Washer 1/2" SAE ZN	4
7	S-8760	Bolt, HHCS 1/2"-13 x 1-1/2" ZN Grade 5	4
8	S-8260	Nylock Nut 1/2"-13 ZN Grade 5	4
9	DFB0326	Index Shaft 14" 4 Hole Distributor	1
10	DFB0040	Transition Box Support Weldment	1
11	DFB0043	Plate, Transition Box Spacer	2
12	DFB0261	14" Transition Box with Liner	1
13	S-9288	Spring Pin 1/4" x 2-1/2" Plain Steel Slotted Rolled	3
14	DFB0327	14" 4 Hole Transition Extension Tube Assembly	1
15	DFB0274	Brush/Mount Assembly - 14"	1
16	DFB0288P	Door/Hinge Bracket Assembly 14"	1
17	S-248	Flat Washer 3/8" x 7/16" I.D. x 1" O.D. YDP	6
18	S-7383	Nylock Nut 3/8"-16 ZN Grade 5	2
19	S-7515	Bolt, HHCS 3/8"-16 x 1-1/2" Grade 5	4
20	DFB0296	Outlet Cone Liner 14" Distributor	4

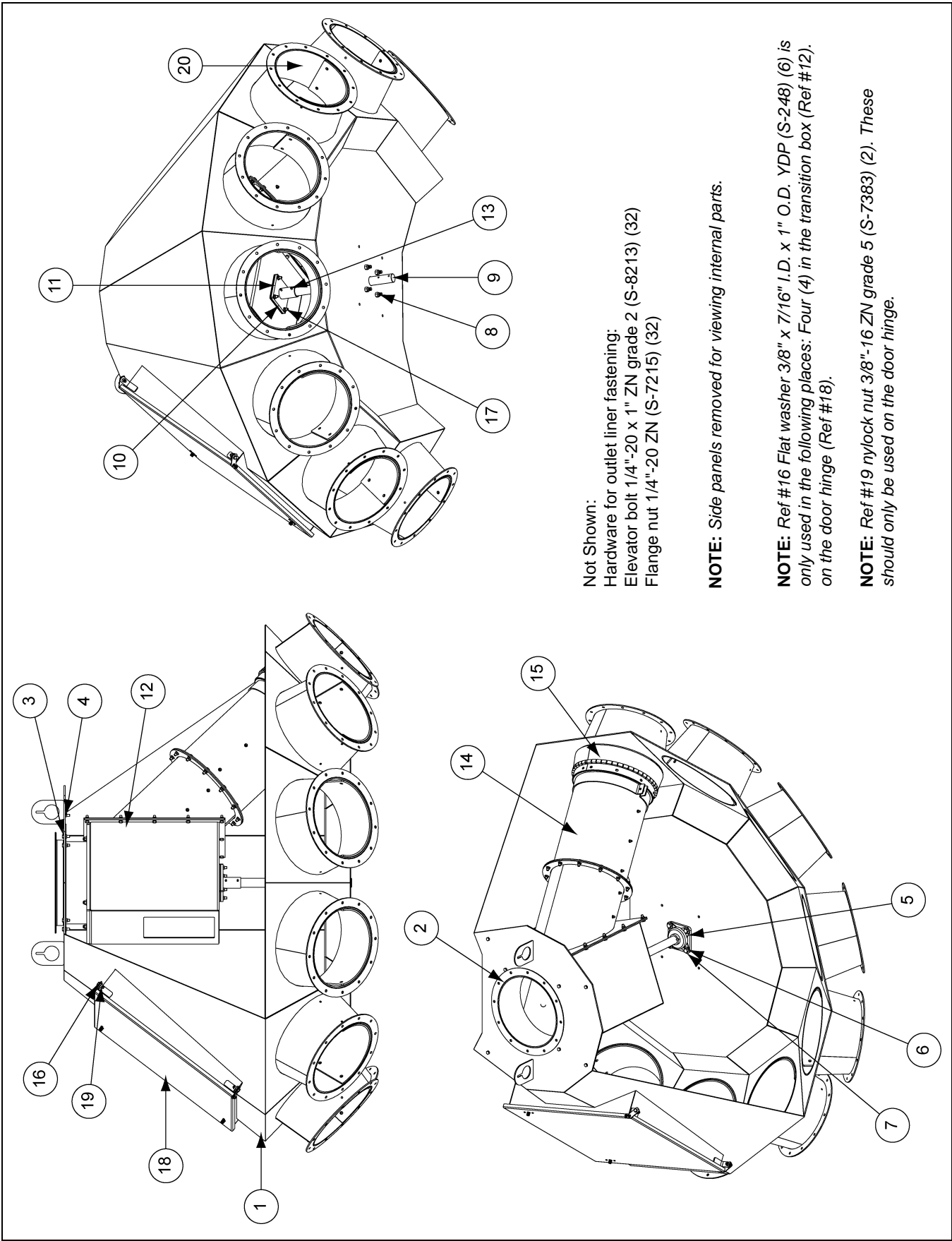
14" 6 Hole, 45° Distributor Assembly (DFB14645G)



14" 6 Hole, 45° Distributor Assembly (DFB14645G) Parts List

Ref #	Part #	Description	Qty
1	DFB0298G	14" 6 Hole Body Weldment Distributor	1
2	S-7469	Bolt, HHCS 3/8"-16 x 1" ZN Grade 5	22
3	KD-PBA0003	Bearing, 1-1/2" 4 Bolt	1
4	S-2120	Flat Washer 1/2" SAE ZN	4
5	S-7811	Bolt, HHCS 1/2"-13 x 2" ZN Grade 5	4
6	S-8260	Nylock Nut 1/2"-13 ZN Grade 5	4
7	DFB0308	Index Shaft 14" 6 Hole Distributor	1
8	DFB0040	Transition Box Support Weldment	1
9	DFB0043	Plate, Transition Box Spacer	2
10	DFB0261	14" Transition Box with Liner	1
11	S-9288	Spring Pin 1/4" x 2-1/2" Plain Steel Slotted Rolled	3
12	DFB0312	14" 6 Hole Transition Extension Tube Assembly	1
13	S-248	Flat Washer 3/8" x 7/16" I.D. x 1" O.D. YDP	6
14	S-7515	Bolt, HHCS 3/8"-16 x 1-1/2" Grade 5	4
15	S-968	Flange Nut 3/8"-16 ZN Grade 5 Wide Flange	24
16	DFB0274	Brush/Mount Assembly - 14"	1
17	DFB0313	14" 6 Hole Inlet Sleeve Weldment	1
18	DFB0288G	Door/Hinge Bracket Assembly 14"	1
19	S-7383	Nylock Nut 3/8"-16 ZN Grade 5	2
20	DFB0296	Outlet Cone Liner 14" Distributor	6

14" 8 Hole, 45° Distributor Assembly (DFB14845G)



14" 8 Hole, 45° Distributor Assembly (DFB14845G) Parts List

Ref #	Part #	Description	Qty
1	DFB0246G	14" 8 Hole Body Weldment Distributor	1
2	DFB0282	14" Inlet Sleeve Weldment Distributor	1
3	S-7469	Bolt, HHCS 3/8"-16 x 1" ZN Grade 5	22
4	S-968	Flange Nut 3/8"-16 ZN Grade 5 Wide Flange	24
5	KD-PBA0003	Bearing, 1-1/2" 4 Bolt	1
6	S-2120	Flat Washer 1/2" SAE ZN	4
7	S-7811	Bolt, HHCS 1/2"-13 x 2" ZN Grade 5	4
8	S-8260	Nylock Nut 1/2"-13 ZN Grade 5	4
9	DFB0287	Index Shaft 14" 8 Hole Distributor	1
10	DFB0040	Transition Box Support Weldment	1
11	DFB0043	Plate, Transition Box Spacer	2
12	DFB0261	14" Transition Box with Liner	1
13	S-9288	Spring Pin 1/4" x 2-1/2" Plain Steel Slotted Rolled	3
14	DFB0293	14" 8 Hole Transition Extension Tube Assembly	1
15	DFB0274	Brush/Mount Assembly - 14"	1
16	S-248	Flat Washer 3/8" x 7/16" I.D. x 1" O.D. YDP	6
17	S-7515	Bolt, HHCS 3/8"-16 x 1-1/2" Grade 5	4
18	DFB0288G	Door/Hinge Bracket Assembly 14"	1
19	S-7383	Nylock Nut 3/8"-16 ZN Grade 5	2
20	DFB0296	Outlet Cone Liner 14" Distributor	8

NOTES

GSI Group, LLC Limited Warranty

The GSI Group, LLC ("GSI") warrants products which it manufactures to be free of defects in materials and workmanship under normal usage and conditions for a period of 12 months after sale to the original end-user or if a foreign sale, 14 months from arrival at port of discharge, whichever is earlier. The end-user's sole remedy (and GSI's only obligation) is to repair or replace, at GSI's option and expense, products that in GSI's judgment, contain a material defect in materials or workmanship. Expenses incurred by or on behalf of the end-user without prior written authorization from the GSI Warranty Group shall be the sole responsibility of the end-user.

Warranty Extensions:

The Limited Warranty period is extended for the following products:

	Product	Warranty Period	
AP Fans and Flooring	Performer Series Direct Drive Fan Motor	3 Years	* Warranty prorated from list price: 0 to 3 years - no cost to end-user 3 to 5 years - end-user pays 25% 5 to 7 years - end-user pays 50% 7 to 10 years - end-user pays 75%
	All Fiberglass Housings	Lifetime	
	All Fiberglass Propellers	Lifetime	
AP and Cumberland	Flex-Flo/Pan Feeding System Motors	2 Years	
Cumberland Feeding/Watering Systems	Feeder System Pan Assemblies	5 Years **	** Warranty prorated from list price: 0 to 3 years - no cost to end-user 3 to 5 years - end-user pays 50%
	Feed Tubes (1-3/4" and 2.00")	10 Years *	
	Centerless Augers	10 Years *	
	Watering Nipples	10 Years *	
Grain Systems	Grain Bin Structural Design	5 Years	
Grain Systems Farm Fans Zimmerman	Portable and Tower Dryers	2 Years	† Motors, burner components and moving parts not included. Portable dryer screens included. Tower dryer screens not included.
	Portable and Tower Dryer Frames and Internal Infrastructure †	5 Years	

GSI further warrants that the portable and tower dryer frame and basket, excluding all auger and auger drive components, shall be free from defects in materials for a period of time beginning on the twelfth (12th) month from the date of purchase and continuing until the sixtieth (60th) month from the date of purchase (extended warranty period). During the extended warranty period, GSI will replace the frame or basket components that prove to be defective under normal conditions of use without charge, excluding the labor, transportation, and/or shipping costs incurred in the performance of this extended warranty.

Conditions and Limitations:

THERE ARE NO WARRANTIES THAT EXTEND BEYOND THE LIMITED WARRANTY DESCRIPTION SET FORTH ABOVE. SPECIFICALLY, GSI MAKES NO FURTHER WARRANTY OF ANY KIND, EXPRESS OR IMPLIED, INCLUDING, WITHOUT LIMITATION, WARRANTIES OF MERCHANTABILITY OR FITNESS FOR A PARTICULAR PURPOSE OR USE IN CONNECTION WITH: (I) PRODUCT MANUFACTURED OR SOLD BY GSI OR (II) ANY ADVICE, INSTRUCTION, RECOMMENDATION OR SUGGESTION PROVIDED BY AN AGENT, REPRESENTATIVE OR EMPLOYEE OF GSI REGARDING OR RELATED TO THE CONFIGURATION, INSTALLATION, LAYOUT, SUITABILITY FOR A PARTICULAR PURPOSE, OR DESIGN OF SUCH PRODUCTS.

GSI shall not be liable for any direct, indirect, incidental or consequential damages, including, without limitation, loss of anticipated profits or benefits. The sole and exclusive remedy is set forth in the Limited Warranty, which shall not exceed the amount paid for the product purchased. This warranty is not transferable and applies only to the original end-user. GSI shall have no obligation or responsibility for any representations or warranties made by or on behalf of any dealer, agent or distributor.

GSI assumes no responsibility for claims resulting from construction defects or unauthorized modifications to products which it manufactured. Modifications to products not specifically delineated in the manual accompanying the equipment at initial sale will void the Limited Warranty.

This Limited Warranty shall not extend to products or parts which have been damaged by negligent use, misuse, alteration, accident or which have been improperly/inadequately maintained. This Limited Warranty extends solely to products manufactured by GSI.

Prior to installation, the end-user has the responsibility to comply with federal, state and local codes which apply to the location and installation of products manufactured or sold by GSI.

This equipment shall be installed in accordance with the current installation codes and applicable regulations, which should be carefully followed in all cases. Authorities having jurisdiction should be consulted before installations are made.



**1004 E. Illinois St.
Assumption, IL 62510-0020
Phone: 1-217-226-4421
Fax: 1-217-226-4420
www.gsiag.com**



GSI is a worldwide brand of AGCO Corporation.