

Farm/Commercial Distributor

Instruction Manual

PNEG-1385

Date: 10-03-08

GSI GROUP



PNEG-1385

All information, illustrations, photos, and specifications in this manual are based on the latest information available at the time of publication. The right is reserved to make changes at any time without notice.

Contents

Chapter 1 Introduction	4
Chapter 2 Safety	5
Safety Guidelines	5
Safety Instructions	6
Chapter 3 Installation Notes	8
Chapter 4 Maintenance	10
Replacing the Wear Liner	10
Greasing the Bearing	10
Replacing the Brush Mount Assembly	12
Chapter 5 Parts List	13
DFB06445GL - 6" 4 Hole, 45° Distributor Assembly	14
DFB06645GL - 6" 6 Hole, 45° Distributor Assembly	15
DFB06845GL - 6" 8 Hole, 45° Distributor Assembly	16
DFB08645GL - 8" 6 Hole, 45° Distributor Assembly	17
DFB08845GL - 8" 8 Hole, 45° Distributor Assembly	18
DFB081045GL - 8" 10 Hole, 45° Distributor Assembly	19
DFB10645GL - 10" 6 Hole, 45° Distributor Assembly - Drawing A	20
DFB10645GL - 10" 6 Hole, 45° Distributor Assembly - Drawing B	21
DFB10845GL - 10" 8 Hole, 45° Distributor Assembly	22
DFB101045GL - 10" 10 Hole, 45° Distributor Assembly	23
DFB12445GL - 12" 4 Hole, 45° Distributor Assembly	24
DFB12645GL - 12" 6 Hole, 45° Distributor Assembly	25
DFB12845GL - 12" 8 Hole, 45° Distributor Assembly	26
DFB121045GL - 12" 10 Hole, 45° Distributor Assembly	27
DFB14445GL - 14" 4 Hole, 45° Distributor Assembly	28
DFB14645GL - 14" 6 Hole, 45° Distributor Assembly	29
DFB14845GL - 14" 8 Hole, 45° Distributor Assembly	30
Chapter 6 Warranty	31

1. Introduction

Thank you for choosing this product. It is designed to give excellent performance and service for many years.

This manual covers general information on the distributor installation. Due to the wide variety of field conditions we cannot cover every aspect of installation. We offer one method for installing equipment but, rely on the qualified contractor's experience and techniques. Some conditions and surroundings do not allow certain practices during the installation of equipment. We can not be responsible for the installation of the distributor and accessories. We encourage anyone installing, or maintaining this equipment to thoroughly read this manual before proceeding.

The company is the vendor of the distributor and certain of its optional accessories only, and does not assume responsibility for the installation. The installation recommendations contained within this manual are for consideration only.

READ THIS MANUAL carefully to learn how to properly use and install equipment. Failure to do so could result in personal injury or equipment damage.

INSPECT the shipment immediately upon arrival. The customer is responsible for ensuring that all quantities are correct. The customer should report and note any damage or shortage on the bill of lading to justify their claim to the transport company.

THIS MANUAL SHOULD BE CONSIDERED a permanent part of your equipment and should be easily accessible when needed.

A **WARRANTY** is provided as part of the company's support program for customers who use and maintain their equipment as described in the manual. The warranty is explained on the warranty page located on the inside back cover of this manual.

This warranty provides you the assurance that the company will back its products when defects appear within the warranty period. In some circumstances, the company also provides field improvements, often without charge to the customer, even if the product is out of warranty. Should the equipment be abused, or modified to change its performance beyond the factory specifications, the warranty will become void and field improvements may be denied.

Safety Guidelines

This manual contains information that is important for you, the owner/operator, to know and understand. This information relates to protecting **personal safety** and **preventing equipment problems**. It is the responsibility of the owner/operator to inform anyone operating or working in the area of this equipment of these safety guidelines. To help you recognize this information, we use the symbols that are defined below. Please read the manual and pay attention to these sections. Failure to read this manual and its safety instructions is a misuse of the equipment and may lead to serious injury or death.



This is the safety alert symbol. It is used to alert you to potential personal injury hazards. Obey all safety messages that follow this symbol to avoid possible injury or death.



DANGER indicates an imminently hazardous situation which, if not avoided, will result in death or serious injury.



WARNING indicates a potentially hazardous situation which, if not avoided, could result in death or serious injury.



CAUTION indicates a potentially hazardous situation which, if not avoided, may result in minor or moderate injury.



CAUTION used without the safety alert symbol indicates a potentially hazardous situation which, if not avoided, may result in property damage.



NOTE indicates information about the equipment that you should pay special attention.

2. Safety

Safety Instructions

Our foremost concern is your safety and the safety of others associated with this equipment. We want to keep you as a customer. This manual is to help you understand safe operating procedures and some problems which may be encountered by the operator and other personnel.

As owner and/or operator, it is your responsibility to know what requirements, hazards and precautions exist, and to inform all personnel associated with the equipment or in the area. Safety precautions may be required from the personnel. Avoid any alterations to the equipment. Such alterations may produce a very dangerous situation where **SERIOUS INJURY** or **DEATH** may occur.

This equipment shall be installed in accordance with the current installation codes and applicable regulations which should be carefully followed in all cases. Authorities having jurisdiction should be consulted before installations are made.

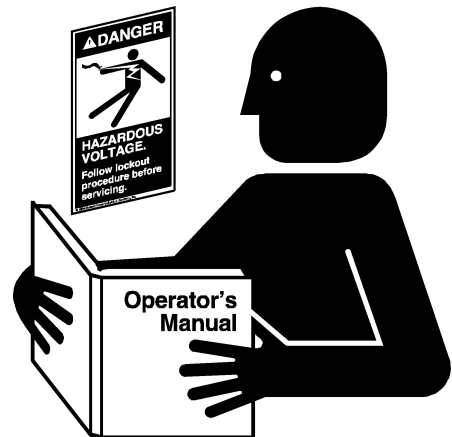
Follow Safety Instructions

Carefully read all safety messages in this manual and safety signs on your machine. Keep signs in good condition. Replace missing or damaged safety signs. Be sure new equipment components and repair parts include the current safety signs. Replacement safety signs are available from the manufacturer.

Learn how to operate the machine and how to use controls properly. Do not let anyone operate without instruction.

Keep your machinery in proper working condition. Unauthorized modifications to the machine may impair the function and/or safety and affect machine life.

If you do not understand any part of this manual or need assistance, contact your dealer.



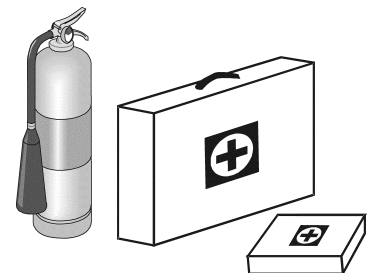
Read and Understand Manual

Prepare for Emergencies

Be prepared if fire starts.

Keep a first aid kit and fire extinguisher handy.

Keep emergency numbers for doctors, ambulance service, hospital and fire department near your telephone.



Keep Emergency Equipment Quickly Accessible

Wear Protective Clothing

Wear close fitting clothing and safety equipment appropriate to the job.

Remove all jewelry.

Long hair should be tied up and back.

Safety glasses should be worn at all times to protect eyes from debris.

Wear gloves to protect your hands from sharp edges on plastic or steel parts.

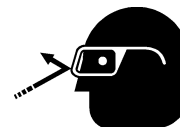
Wear steel toe boots to help protect your feet from falling debris. Tuck in any loose or dangling shoe strings.

A respirator may be needed to prevent breathing potentially toxic fumes and dust.

Wear hard hat to help protect your head.

Wear appropriate fall protection equipment when working at elevations greater than six feet (6').

Eye Protection



Gloves



Steel Toe Boots



Respirator



Hard Hat



Fall Protection



3. Installation Notes

***Sloped transitions are included with the following models:**

1. DFB08845GLT (8" 8 Hole) 1 Foot offset sloped transition
2. DFB081045GLT (8" 10 Hole) 1 Foot offset sloped transition
3. DFB10645GLT (10" 6 Hole) 1 Foot offset sloped transition
4. DFB10845GLT (10" 8 Hole) 1 Foot offset sloped transition
5. DFB101045GLT (10" 10 Hole) 2 Feet offset sloped transition
6. DFB12445GLT (12" 4 Hole) 1 Foot offset sloped transition
7. DFB12645GLT (12" 6 Hole) 1 Foot offset sloped transition
8. DFB12845GLT (12" 8 Hole) 1 Foot offset sloped transition
9. DFB121045GLT (12" 10 Hole) 1 Foot offset sloped transition

*The offset transition allow clearance between the trunking and the distributor control wheel. The transition also keeps the distributor outlet spouting from interfering with the ladder safety cage. Transitions must be installed for proper distributor operation. (See [Figure 3A](#) and [Figure 3B.](#))

Transition Numbers

GESLLNCEA006 16" x 12" Sloped discharge transition, 1' offset
(1' Offset sloped transition = 1' drop and 1' horizontal movement)

GESLLNCEB006 16" x 12" Sloped discharge transition, 2' offset
(2' Offset sloped transition = 2' drop and 2' horizontal movement)

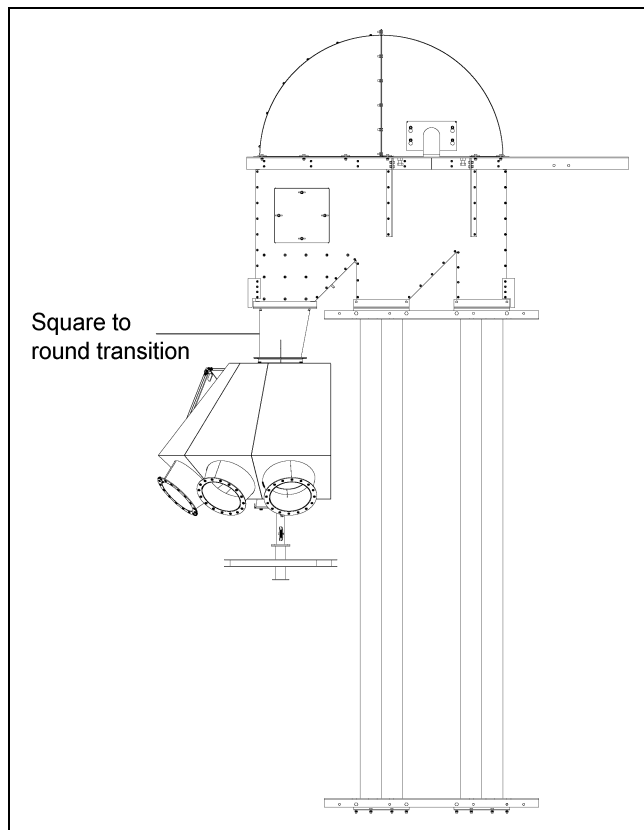


Figure 3A

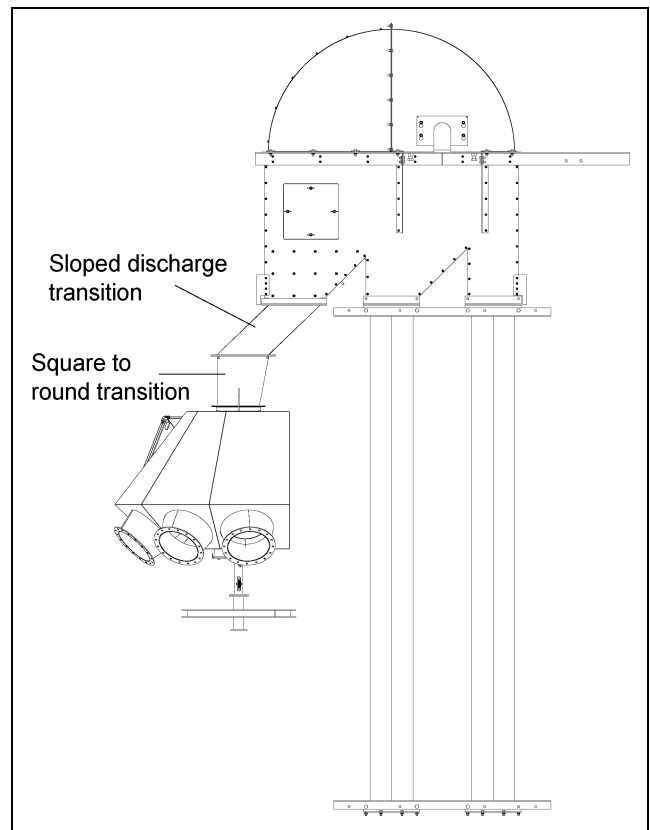


Figure 3B



If you must get inside of distributor, turn OFF and LOCK OUT all power sources. DO NOT operate the distributor while inside.



Crush hazard. Lifting lugs are to be used for placement only. DO NOT use lifting lugs for structural support. (See Figure 3C.)



DO NOT use a clamp band when attaching the down spout to the inlet flange. A bolted connection is required at this point. (See Figure 3C.)

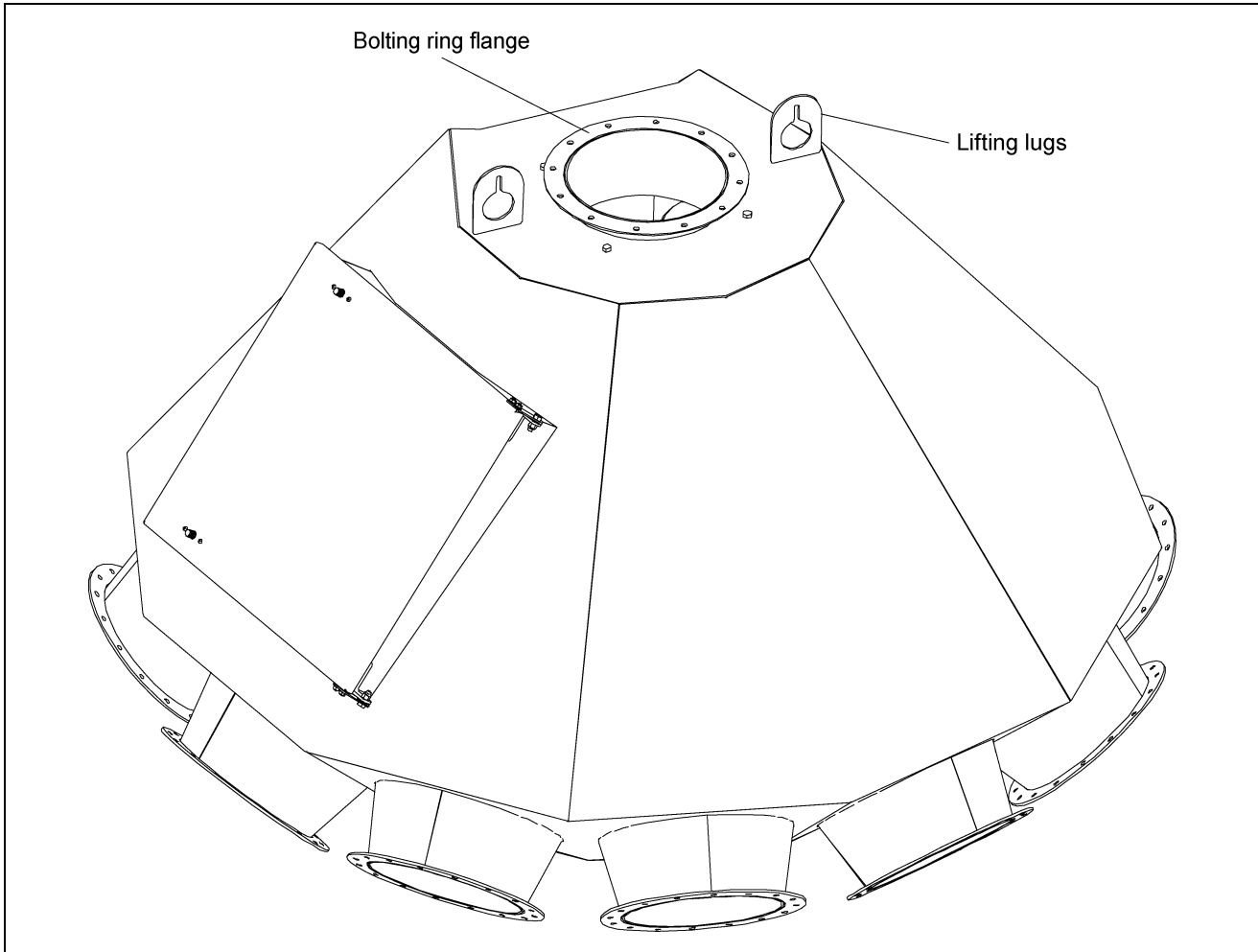


Figure 3C

Replacing the Wear Liner

Position the spouting near the door. Remove the transition extension tube. (See Figure 4A.) Remove the transition spout. (See Figure 4A.) Reverse the transition box which will allow access to the hardware holding the liner in. (See Figure 4B on Page 11). Replace the old liner with the new liner. (See Figure 4C on Page 11.) Replace the transition spout and transition extension tube.

Replacement Liner Numbers

8" - DFB0183, 10" - DFB0051, 12" - DFB0121

Greasing the Bearing

The bearing is greased at the factory and is ready for operation. Lubricate annually using a #2 lithium based grease or equivalent. (See Figure 4A.)

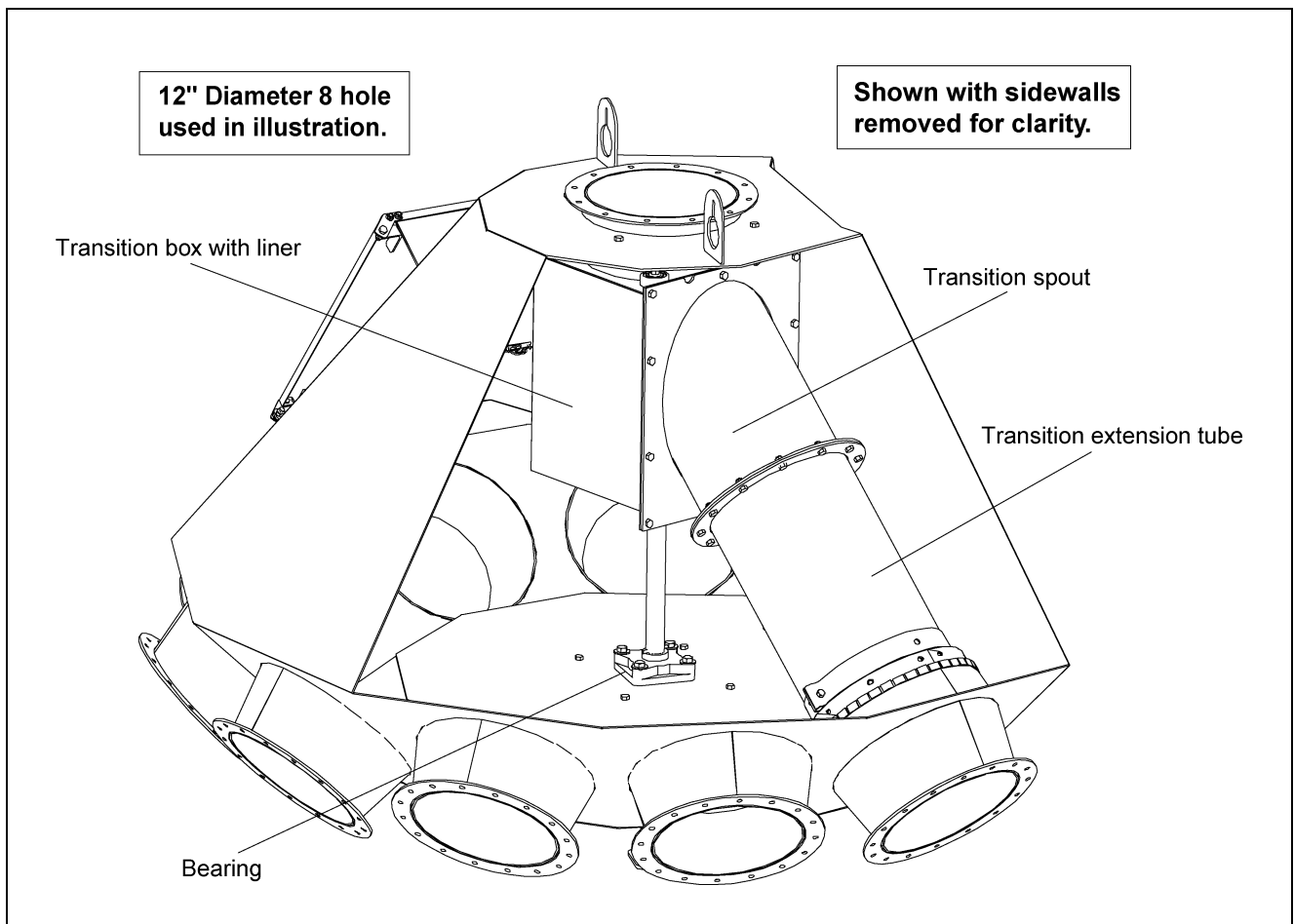


Figure 4A

Greasing the Bearing (Continued)

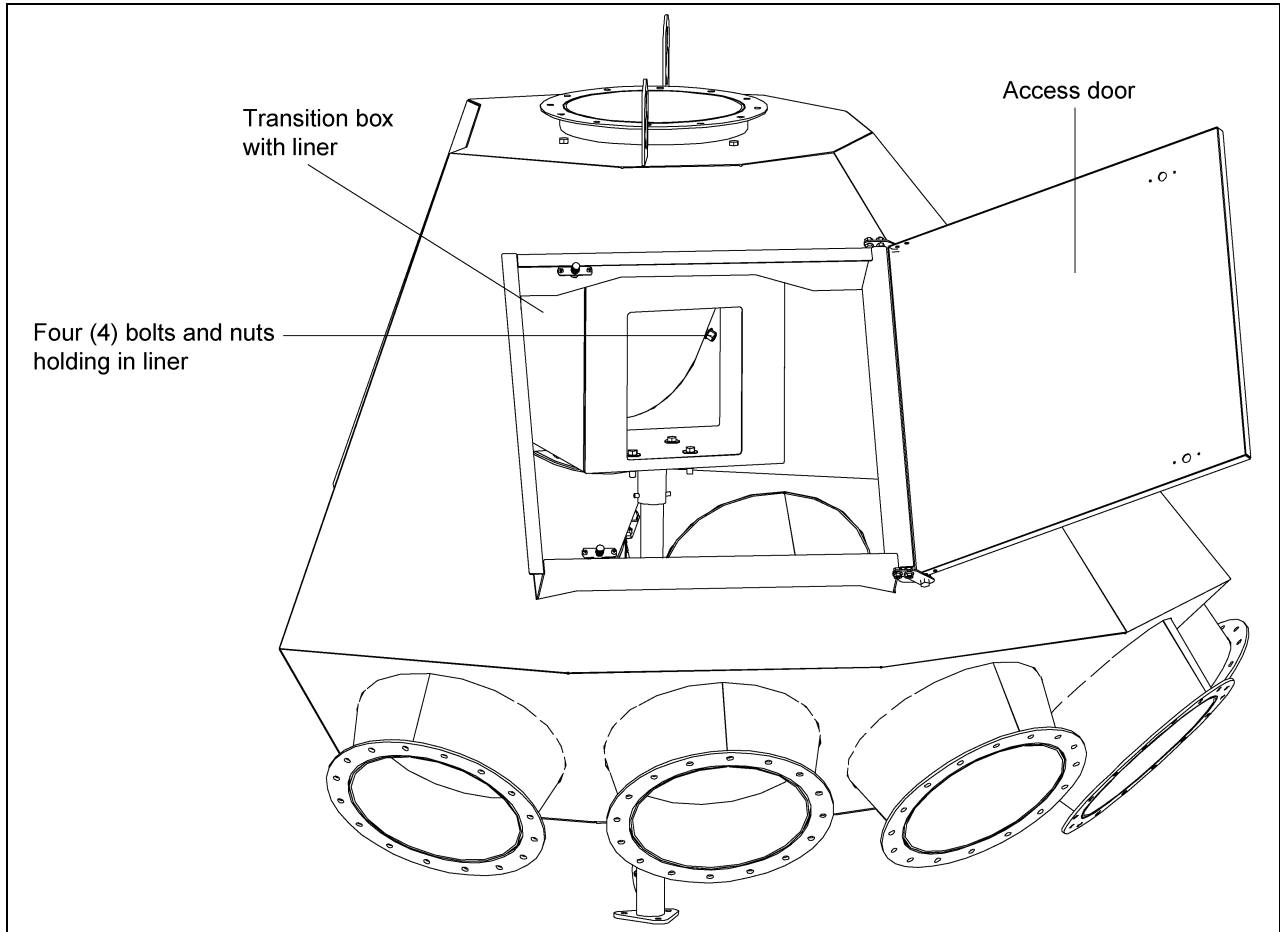


Figure 4B

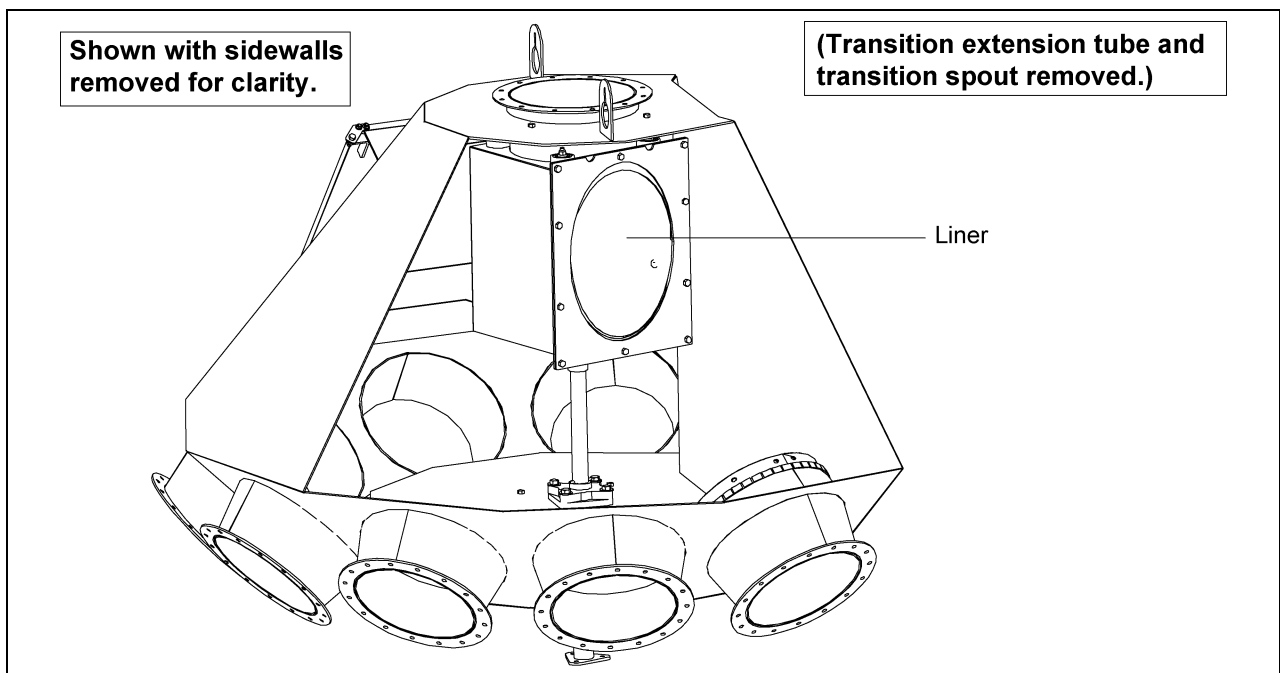


Figure 4C

Replacing the Brush Mount Assembly

Position the spouting near the door. Remove the transition extension tube. (See Figure 4D.) Loosen the clamp band and remove old brush assembly from the transition extension tube. Replace the new brush assembly onto transition extension tube and tighten in place using the clamp band. Replace the transition extension tube/brush assembly.

NOTE: Make sure the seam of the brush assembly is facing towards the top as shown in Figure 4D. The brush bristles should be somewhat snug against the spout wall. Operate the spout to all outlets to ensure proper alignment and clearance.

Replacement Brush Assembly Numbers

8" - DFB0189, 10" - DFB0060, 12" - DFB0127

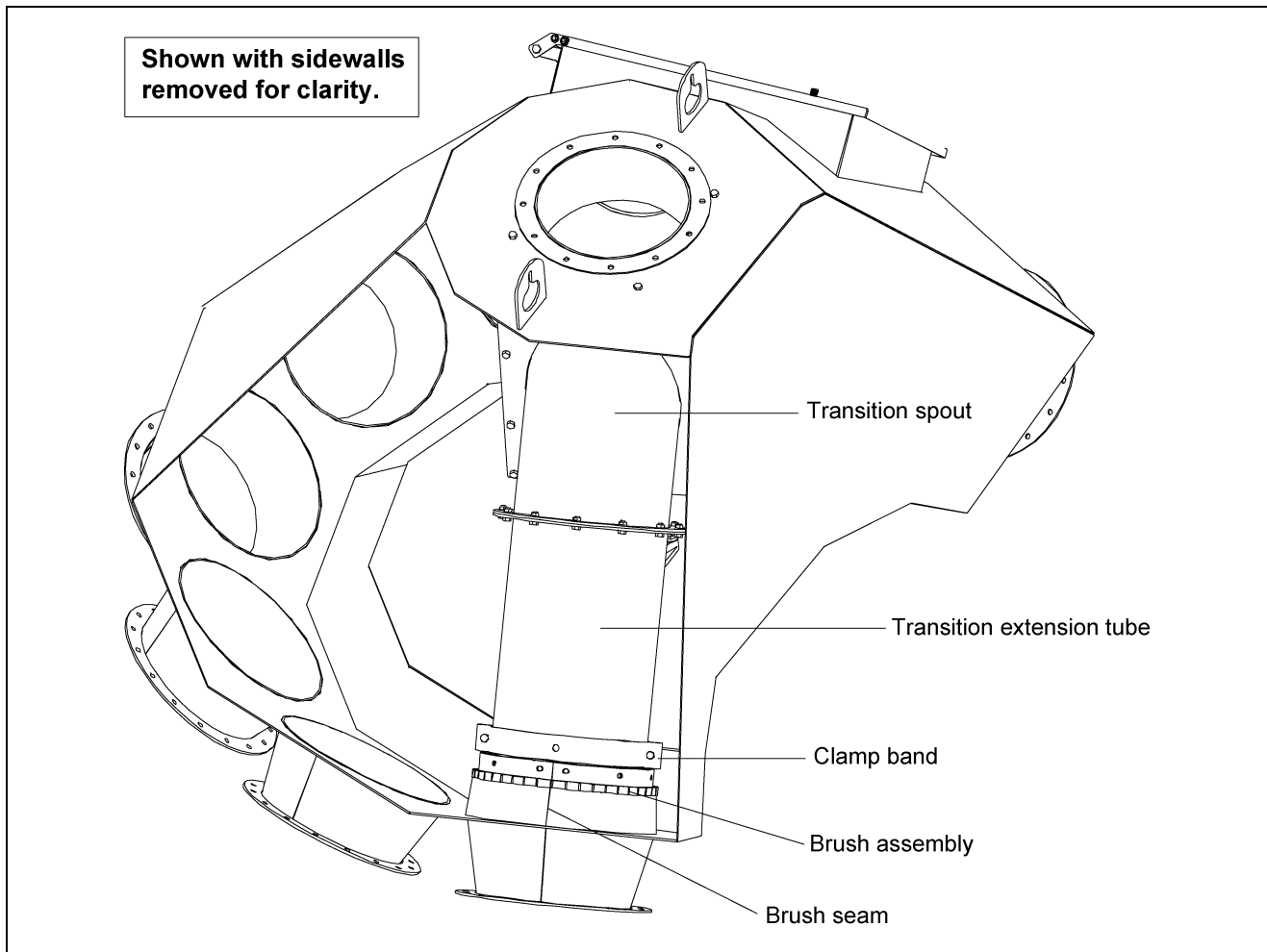
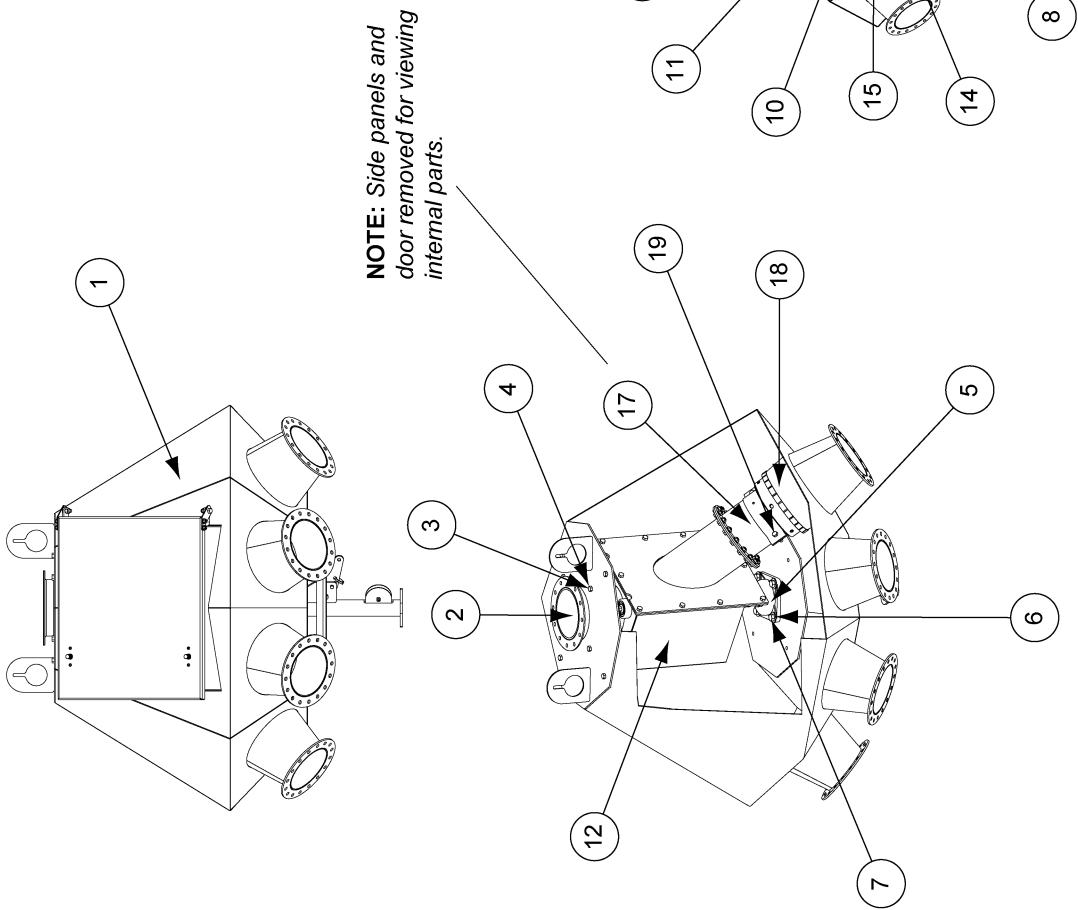


Figure 4D

1. DFB06445GL - 6" 4 Hole, 45° Distributor Assembly
2. DFB06645GL - 6" 6 Hole, 45° Distributor Assembly
3. DFB06845GL - 6" 8 Hole, 45° Distributor Assembly
4. DFB08645GL - 8" 6 Hole, 45° Distributor Assembly
5. DFB08845GL - 8" 8 Hole, 45° Distributor Assembly
6. DFB081045GL - 8" 10 Hole, 45° Distributor Assembly
7. DFB10645GL - 10" 6 Hole, 45° Distributor Assembly - Drawing A
8. DFB10645GL - 10" 6 Hole, 45° Distributor Assembly - Drawing B
9. DFB10845GL - 10" 8 Hole, 45° Distributor Assembly
10. DFB101045GL - 10" 10 Hole, 45° Distributor Assembly
11. DFB12445GL - 12" 4 Hole, 45° Distributor Assembly
12. DFB12645GL - 12" 6 Hole, 45° Distributor Assembly
13. DFB12845GL - 12" 8 Hole, 45° Distributor Assembly
14. DFB121045GL - 12" 10 Hole, 45° Distributor Assembly
15. DFB14445GL - 14" 4 Hole, 45° Distributor Assembly
16. DFB14645GL - 14" 6 Hole, 45° Distributor Assembly
17. DFB14845GL - 14" 8 Hole, 45° Distributor Assembly

DFB06445GL - 6" 4 Hole, 45° Distributor Assembly

Ref #	Part #	Qty	Description
1	DFB0424	1	6" 4 Hole Body Weldment
2	DFB0422	1	Inlet Sleeve Weldment
3	S-7105	28	Bolt HHCS 3/8"-16 x 3/4" Grade 5 Plated
4	S-968	30	Nut Flange Whiz 3/8"-16 ZN Grade 5
5	KD-PBA0003	1	Bearing 1-1/2" Dodge 4B SC Flange
6	S-2120	4	Flat Washer 1/2" SAE
7	S-8760	4	Bolt HHCS 1/2"-13 x 1-1/2" ZN Grade 5
8	S-8260	4	Nylock Nut 1/2"-13
9	DFB0210	1	Indexing Shaft
10	DFB0040	1	Transition Box Support Weldment
11	DFB0043	2	Transition Box Spacer Plate
12	DFB0361	1	Transition Box w/ Liner Assembly
13	S-248	10	Flat Washer 3/8" USS ZN YDP Grade 2
14	S-7515	4	Bolt HHCS 3/8"-16 x 1-1/2" ZN Grade 5
15	S-7383	6	Nylock Nut 3/8"-16
16	S-9288	5	Spring Pin 1/4" x 2-1/2" Long
17	DFB0420	1	Transition Tube Extension
18	DFB0374	1	Brush/Mount Assembly
19	S-7521	2	Bolt HHCS 3/8"-16 x 1-1/2" ZN Grade 2
20	DFB0038	1	Index Standoff
21	DFB0425	1	6" 4 Hole Index Plate
22	DFB0050	1	Index Tube Assembly
23	DFB0032	1	Door/Hinge Assembly
24	S-7520	2	Bolt HHCS 3/8"-16 x 1" ZN Grade 2



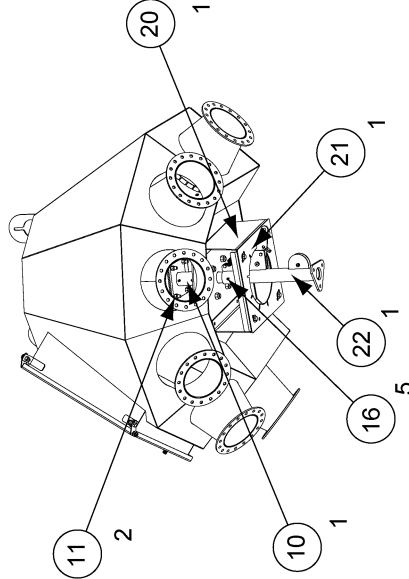
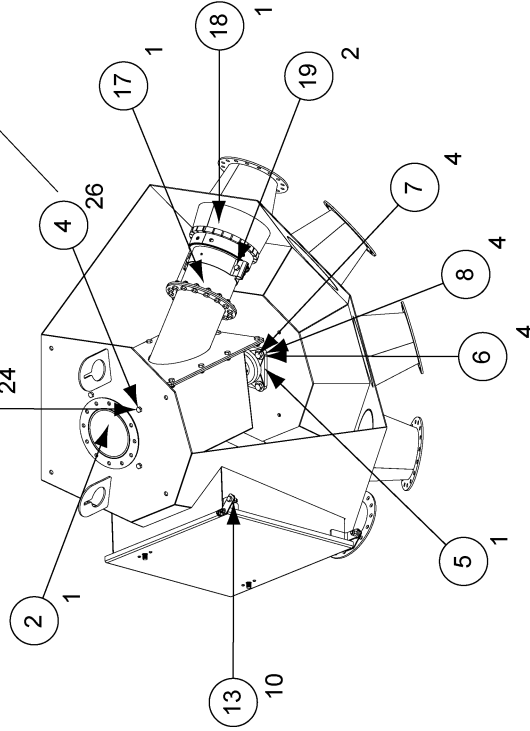
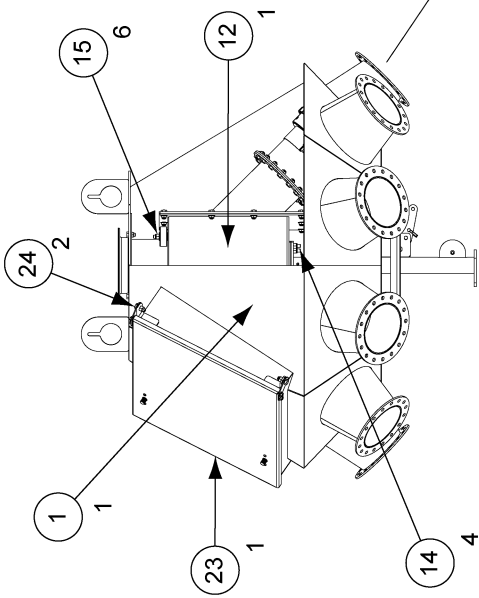
NOTE: Side panels and door removed for viewing internal parts.

No. ECN		Date	By	Revision Description
MATERIAL HANDLING				
Engineering Division:				
Assumption, IL				
6" 4 HOLE, 45°				
DISTRIBUTOR ASSEMBLY				
TOLERANCES (Unless Noted) Fractions +/- 1/32" Decimals +/- 0.031 Angles +/- 1.00		Weight Index	Scale	Drawn By
Sheet 1 of 1		N/A	N/A	BJT
Date		03-Feb-06	Work to Dimensions Do Not Scale	
Drawing No.		DFB06445GL		

DFB06645GL - 6" 6 Hole, 45° Distributor Assembly

Ref #	Part #	Qty	Description
1	DFB0406	1	6" 6 Hole Body Weldment
2	DFB0422	1	Inlet Sleeve Weldment
3	S-7105	24	Bolt HHCS 3/8"-16 x 3/4" Grade 5 Plated
4	S-968	26	Nut Flange WHiz 3/8"-16 ZN Grade 5
5	KD-PBA0003	1	Bearing 1-1/2" Dodge 4B SC Flange
6	S-2120	4	Flat Washer 1/2" SAE
7	S-8760	4	Bolt HHCS 1/2"-13 x 1-1/2" ZN Grade 5
8	S-8260	4	Nylock Nut 1/2"-13
9	DFB0210	1	Indexing Shaft
10	DFB0040	1	Transition Box Support Weldment
11	DFB0043	2	Transition Box Spacer Plate
12	DFB0361	1	Transition Box w/ Liner Assembly
13	S-248	10	Flat Washer 3/8" USS ZN YDF Grade 2
14	S-7515	4	Bolt HHCS 3/8"-16 x 1-1/2" ZN Grade 5
15	S-7383	6	Nylock Nut 3/8"-16
16	S-9288	5	Spring Pin 1/4" x 2-1/2" Long
17	DFB0420	1	Transition Tube Extension
18	DFB0374	1	Brush/Mount Assembly
19	S-7521	2	Bolt HHCS 3/8"-16 x 1-1/2" ZN Grade 2
20	DFB0038	1	Index Standoff
21	DFB0200	1	8" 6 Hole Index Plate
22	DFB0050	1	Index Tube Assembly
23	DFB0032	1	Door/Hinge Assembly
24	S-7520	2	Bolt HHCS 3/8"-16 x 1" ZN Grade 2

NOTE: Side panels removed for viewing internal parts.

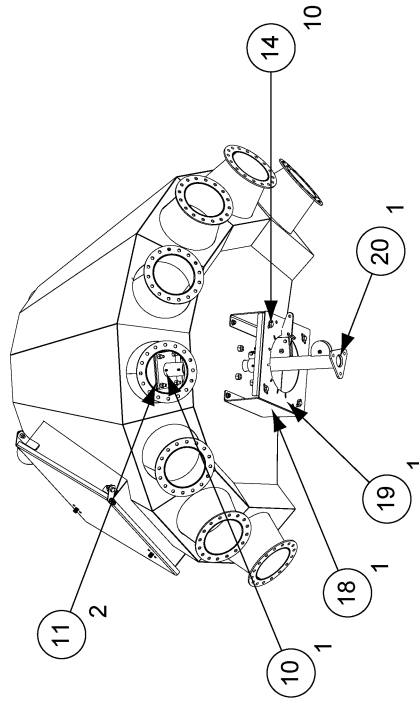
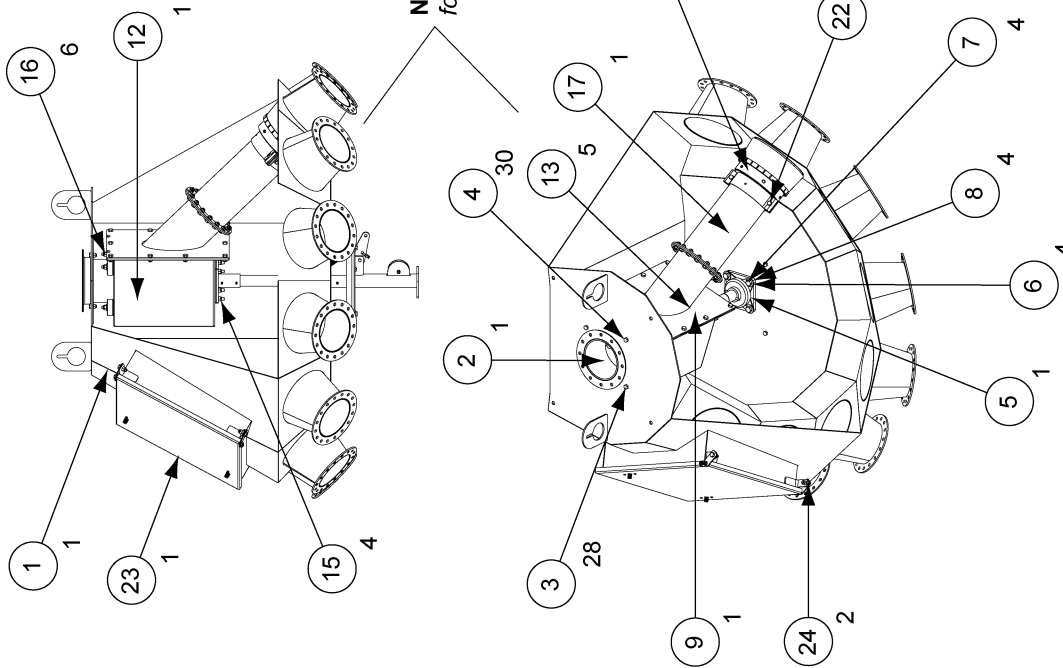


No.	ECN	Revision/Description	Date	By	THE GSI GROUP Assumption, IL	6" 6 HOLE, 45° DISTRIBUTOR ASSEMBLY	TOLERANCES (Unless Noted) Fractions +/- 1/32 Decimals +/- 0.03 Angles +/- 1.00	Sheet 1 of 1	IMV	N/A	Drawing No.
					Engineering Division: MATERIAL HANDLING		Weight N/A	Volume N/A	Scale N/A	Drawn BJT	Checked Date

DFB06845GL - 6" 8 Hole, 45° Distributor Assembly

Ref #	Part #	Qty	Description
1	DFB0347	1	Body Weldment
2	DFB0381	1	Inlet Sleeve Weldment
3	S-7105	28	Bolt HHCS 3/8"-16 x 3/4" Grade 5 Plated
4	S-968	30	Nut Flange Whiz 3/8"-16 ZN Grade 5
5	KD-PBA0003	1	Bearing 1-1/2" Dodge 4B SC Flange
6	S-2120	4	Flat Washer 1/2" SAE
7	S-8760	4	Bolt HHCS 1/2"-13 x 1-1/2" ZN Grade 5
8	S-8260	4	Nylock Nut 1/2"-13
9	DFB0360	1	Indexing Shaft
10	DFB0040	1	Transition Box Support Weldment
11	DFB0043	2	Transition Box Spacer Plate
12	DFB0361	1	Transition Box w/ Liner Assembly
13	S-9288	5	Spring Pin 1/4" x 2-1/2" Long
14	S-248	10	Flat Washer 3/8" USS ZN YDP Grade 2
15	S-7515	4	Bolt HHCS 3/8"-16 x 1-1/2" ZN Grade 5
16	S-7383	6	Nylock Nut 3/8"-16
17	DFB0372	1	Transition Tube Extension
18	DFB0038	1	Index Standoff
19	DFB0384	1	Index Plate
20	DFB0050	1	Index Tube Assembly
21	DFB0374	1	Brush/Mount Assembly
22	S-7521	2	Bolt HHCS 3/8"-16 x 1-1/2" ZN Grade 2
23	DFB0032	1	Door/Hinge Assembly
24	S-7520	2	Bolt HHCS 3/8"-16 x 1" ZN Grade 2

NOTE: Side panels removed for viewing internal parts.



No.	ECN	Revision Description	Date	By	MATERIAL HANDLING	Engineering Division: Assumption, IL	THE GSI GROUP	6" 8 HOLE, 45°		Sheet 1 of 1		Drawing No. DFB06845GL
								DISTRIBUTOR ASSEMBLY		Material Index	Rev	
TOLERANCES (Unless Noted) Fractions +/- 1/32" Decimals +/- 0.031" Angles +/- 1.00°								Checked	By	Date	Scale	Work to Dimensions Do Not Scale
								Drawn	By	Date	Scale	Work to Dimensions Do Not Scale
								03-Jan-06	BJT	03-Jan-06	NONE	NONE

DFB08645GL - 8" 6 Hole, 45° Distributor Assembly

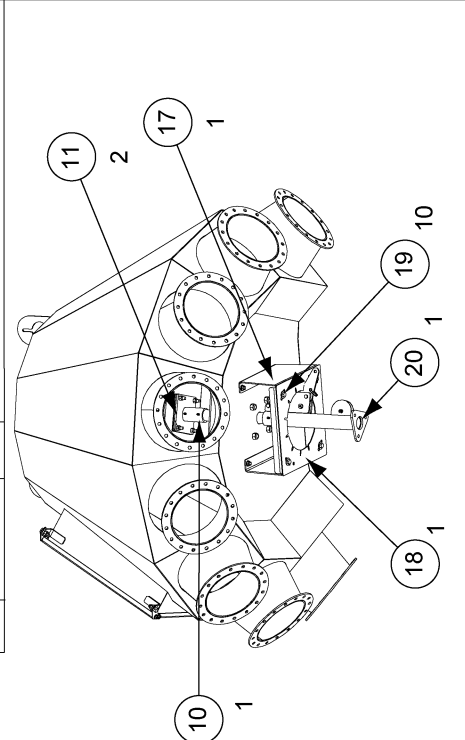
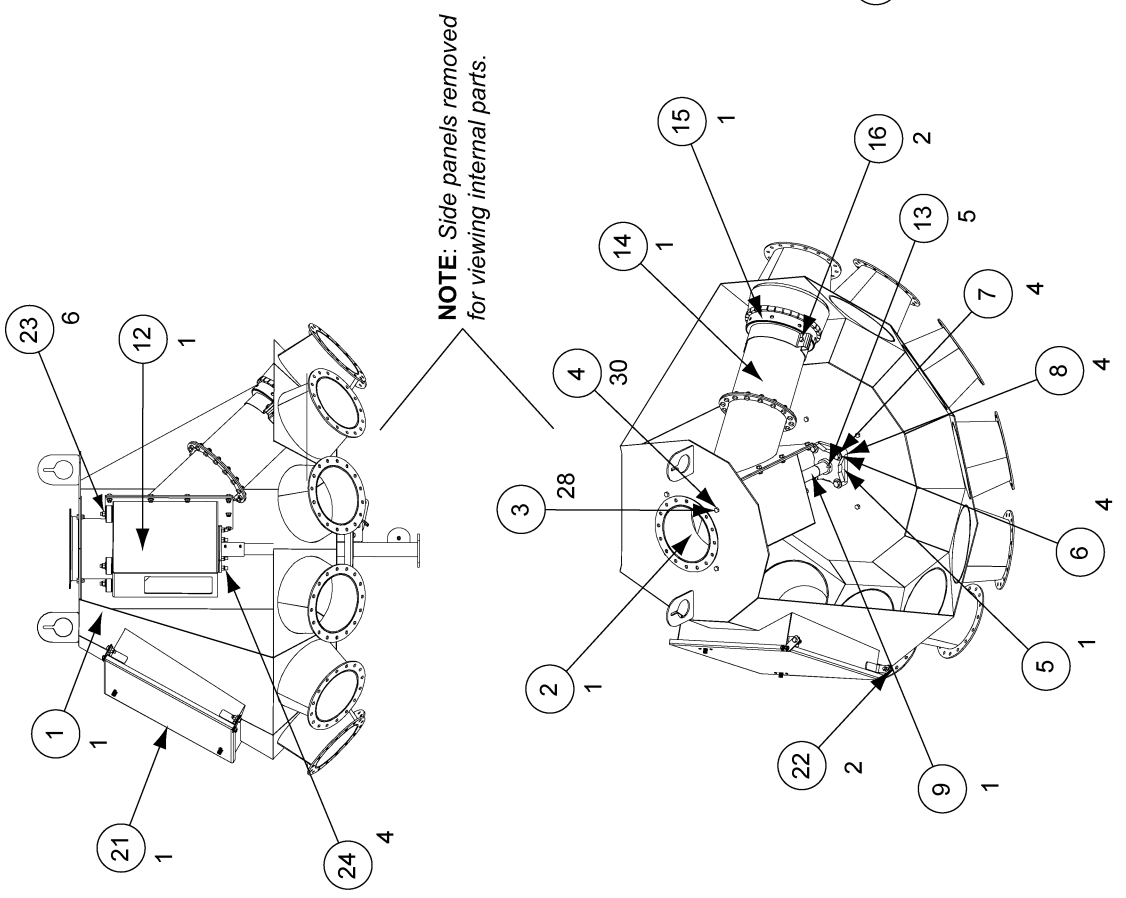
Ref #	Part #	Qty	Description
1	DFB0199	1	8" 6 Hole Body Weldment
2	DFB0196	1	Inlet Sleeve Weldment
3	S-7105	24	Bolt HHCS 3/8"-16 x 3/4" Grade 5 Plated
4	S-968	26	Nut Flange Whiz 3/8"-16 ZN Grade 5
5	KD-PBA0003	1	Bearing 1-1/2" Dodge 4B SC Flange
6	S-2120	4	Flat Washer 1/2" SAE
7	S-8760	4	Bolt HHCS 1/2"-13 x 1-1/2" ZN Grade 5
8	S-8260	4	Nylock Nut 1/2"-13
9	DFB0210	1	Indexing Shaft
10	DFB0040	1	Transition Box Support Weldment
11	DFB0043	2	Transition Box Spacer Plate
12	DFB0176	1	Transition Box w/ Liner Assembly
13	S-248	10	Flat Washer 3/8" USS ZN YDP Grade 2
14	S-7515	4	Bolt HHCS 3/8"-16 x 1-1/2" ZN Grade 5
15	S-7383	6	Nylock Nut 3/8"-16
16	S-9288	5	Spring Pin 1/4" x 2-1/2" Long
17	DFB0211	1	Transition Tube Extension
18	DFB0189	1	Brush/Mount Assembly
19	S-7521	2	Bolt HHCS 3/8"-16 x 1-1/2" ZN Grade 2
20	DFB0038	1	Index Standoff
21	DFB0200	1	8" 6 Hole Index Plate
22	DFB0050	1	Index Tube Assembly
23	DFB0032	1	Door/Hinge Assembly
24	S-7520	2	Bolt HHCS 3/8"-16 x 1" ZN Grade 2

NOTE: Side panels removed for viewing internal parts.

THE GST GROUP Assumption, IL		Sheet 1 of 1		Drawing No.	
Engineering Division:	MATERIAL HANDLING	Weight:	N/A	Ship Wt.:	N/A
By:		Drawn By:	BJT	Date:	18-May-04
Date:		Checked By:		Work to Dimensions:	NONE
No.:	ECN	Revision Description:		Do Not Scale:	

DFB08845GL - 8" 8 Hole, 45° Distributor Assembly

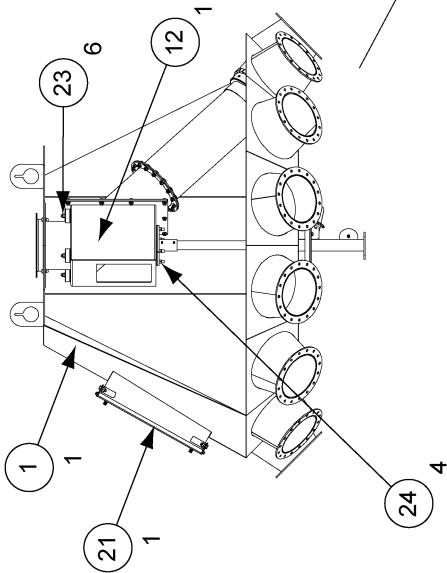
Ref #	Part #	Qty	Description
1	DFB0161	1	Body Weldment
2	DFB0196	1	Inlet Sleeve Weldment
3	S-7105	28	Bolt HHCS 3/8"-16 x 3/4" Grade 5 Plated
4	S-968	30	Nut Flange Whiz 3/8"-16 ZN Grade 5
5	KD-PBA0003	1	Bearing 1-1/2" Dodge 4B SC Flange
6	S-2120	4	Flat Washer 1/2" SAE
7	S-8760	4	Bolt HHCS 1/2"-13 x 1-1/2" ZN Grade 5
8	S-8260	4	Nylock Nut 1/2"-13
9	DFB0175	1	Indexing Shaft
10	DFB0040	1	Transition Box Support Weldment
11	DFB0043	2	Transition Box Spacer Plate
12	DFB0176	1	Transition Box w/ Liner Assembly
13	S-9288	5	Spring Pin 1/4" x 2-1/2" Long
14	DFB0187	1	Transition Tube Extension
15	DFB0189	1	Brush/Mount Assembly
16	S-7521	2	Bolt HHCS 3/8"-16 x 1-1/2" ZN Grade 2
17	DFB0038	1	Index Standoff
18	DFB0162	1	Index Plate
19	S-248	10	Flat Washer 3/8" USS ZN YDP Grade 2
20	DFB0050	1	Index Tube Assembly
21	DFB0032	1	Door/Hinge Assembly
22	S-7520	2	Bolt HHCS 3/8"-16 x 1" ZN Grade 2
23	S-7383	6	Nylock Nut 3/8"-16
24	S-7515	4	Bolt HHCS 3/8"-16 x 1-1/2" ZN Grade 5



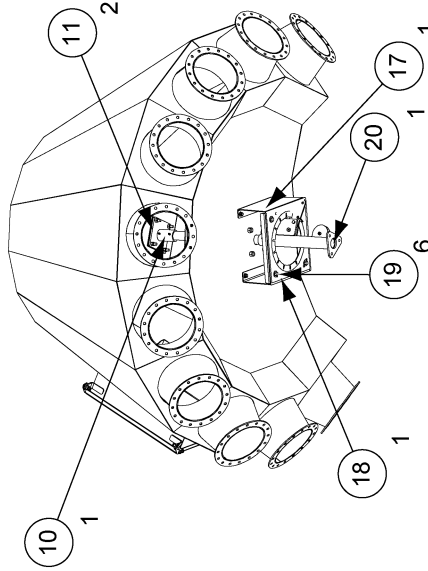
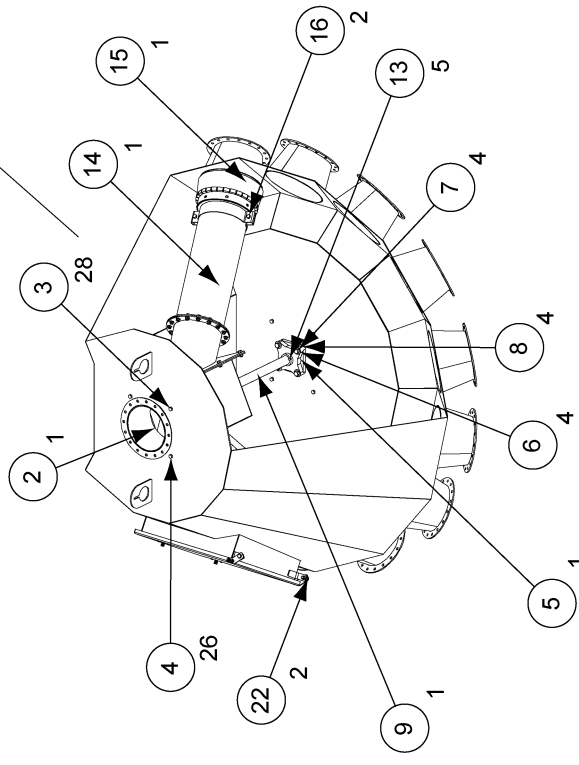
No.	ECN	Revision Description	Date	By
Engineering Division: MATERIAL HANDLING				
THE GST GROUP Assumption, IL				
8" 8 HOLE, 45°				
DISTRIBUTOR ASSEMBLY				
TOLERANCES (Unless Noted)			Sheet 1 of 1	
Fractions +/- 1/32"	Decimals +/- 0.03"	Angles +/- 1.00°	Weight: N/A	IMV: N/A
			Drawn: N/A	Rev: N/A
			By: BJT	Scale: NONE
			Date: 11-May-04	Work to Dimensions: DFB08845GL
			Checked: _____	Drawn: _____
			By: _____	Do Not Scale
Drawing No. DFB08845GL				

DFB081045GL - 8" 10 Hole, 45° Distributor Assembly

Ref #	Part #	Qty	Description
1	DFB0213	1	Body Weldment
2	DFB0196	1	Inlet Sleeve Weldment
3	S-7105	28	Bolt HHCS 3/8"-16 x 3/4" Grade 5 Plated
4	S-968	26	Nut Flange Whiz 3/8"-16 ZN Grade 5
5	KD-PBA0003	1	Bearing 1-1/2" Dodge 4B SC Flange
6	S-2120	4	Flat Washer 1/2" SAE
7	S-8760	4	Bolt HHCS 1/2"-13 x 1-1/2" ZN Grade 5
8	S-8260	4	Nylock Nut 1/2"-13
9	DFB0226	1	Indexing Shaft
10	DFB0040	1	Transition Box Support Weldment
11	DFB0043	2	Transition Box Spacer Plate
12	DFB0176	1	Transition Box w/ Liner Assembly
13	S-9288	5	Spring Pin 1/4" x 2-1/2" Long
14	DFB0227	1	Transition Tube Extension
15	DFB0189	1	Brush/Mount Assembly
16	S-7521	2	Bolt HHCS 3/8"-16 x 1-1/2" ZN Grade 2
17	DFB0038	1	Index Standoff
18	DFB0082	1	10" 10 Hole Index Plate
19	S-248	6	Flat Washer 3/8" USS ZN YDP Grade 2
20	DFB0050	1	Index Tube Assembly
21	DFB0032	1	Door/Hinge Assembly
22	S-7520	2	Bolt HHCS 3/8"-16 x 1" ZN Grade 2
23	S-7383	6	Nylock Nut 3/8"-16
24	S-7515	4	Bolt HHCS 3/8"-16 x 1-1/2" ZN Grade 5



NOTE: Side panels removed for viewing internal parts.



No.	ECN	Revision Description	Date	By	Engineering Division:	MATERIAL HANDLING	THE GSI GROUP Assumption, IL	8" 10 HOLE, 45° DISTRIBUTOR ASSEMBLY			Sheet 1 of 1			Drawing No.	
								TO TOLERANCES (Unless Noted) Fractions +/- 1/32" Decimals +/- 0.031" Angles +/- 1.00			Weight lb	Volume cu ft	IMV N/A	Scale N/A	Scale N/A
					Checked By		Date		Drawn By		Date				
					By		Date		BJT		24-May-04				

DFB10645GL - 10" 6 Hole, 45° Distributor Assembly - Drawing A

Ref #	Part #	Qty	Description
1	DFB0001	1	10" 6 Hole Body Weldment
2	DFB0035	1	10" Inlet Sleeve Weldment
3	DFB0032	1	Door/Hinge Assembly
4	KD-PBA0003	1	Bearing 1-1/2" Dodge 4B SC Flange
5	DFB0038	1	Index Standoff
6	S-7105	12	Bolt HHCS 3/8"-16 x 3/4" Grade 5 Plated
7	S-968	30	Nut Flange Whiz 3/8"-16 ZN Grade 5
8	S-2120	4	Flat Washer 1/2" SAE
9	S-8760	4	Bolt HHCS 1/2"-13 x 1-1/2" ZN Grade 5
10	S-8260	4	Nylock Nut 1/2"-13
11	S-7520	2	Bolt HHCS 3/8"-16 x 1" ZN Grade 2
12	S-7383	6	Nylock Nut 3/8"-16
13	S-248	10	Flat Washer 3/8" USSS ZN YDP Grade 2
14	DFB0045	1	Indexing Shaft
15	S-9288	3	Spring Pin 1/4" x 2-1/2" Long
16	DFB0040	1	Transition Box Support Weldment
17	DFB0043	4	Transition Box Spacer Plate
18	DFB0015	1	10" Transition Box w/ Liner
19	S-7515	4	Bolt HHCS 3/8"-16 x 1-1/2" ZN Grade 5
20	DFB0050	1	Index Tube Assembly
21	DFB0039	1	10" 6 Hole Index Plate
22	DFB0024	1	10" Transition Tube Extension
23	DFB0060	1	10" Brush/Mount Assembly
24	S-7469	16	Bolt HHCS 3/8"-16 x 1" ZN Grade 5
25	S-7521	2	Bolt HHCS 3/8"-16 x 1-1/2" ZN Grade 2

NOTE: Side panels removed for viewing internal parts.

NOTE: See (DBF10645GL Drawing B on Page 21) for further detail instruction.

Sheet 1 of 2		Weight Index	N/A	Ship Wt	N/A	714.732	Drawing No.	DFB10645GL
TOLERANCES (Unless Noted)		Drawn By	BJT	Date	13-Jan-04	Scale	NONE	Work to Dimensions
Fractions +/- 1/32"		Checked By				Doc. Not Scale		
Decimals +/- 0.031								
Angles +/- 1.00								
THE GSI GROUP		Assumption, IL		Engineering Division:		MATERIAL HANDLING		
Revision Description		Date	By					
No.	ECN							

DFB10645GL - 10" 6 Hole, 45° Distributor Assembly - Drawing B

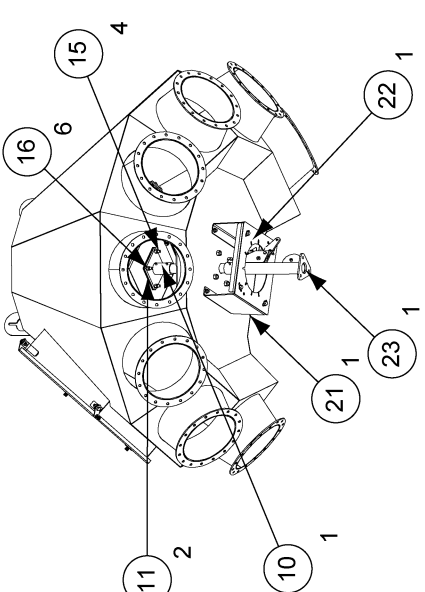
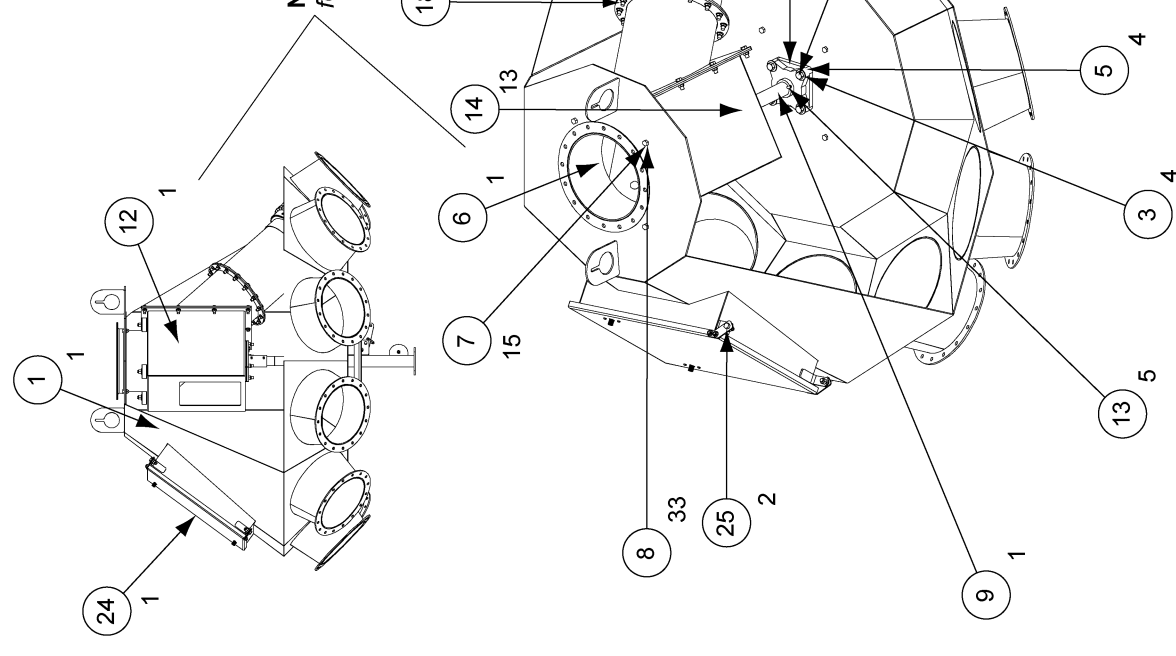
Ref #	Part #	Qty	Description
1	DFB0001	1	10" 6 Hole Body Weldment
2	DFB0035	1	10" Inlet Sleeve Weldment
3	DFB0032	1	Door/Hinge Assembly
4	KD-PBA0003	1	Bearing 1-1/2" Dodge 4B SC Flange
5	DFB0038	1	Index Standoff
6	S-7105	12	Bolt HHCS 3/8"-16 x 3/4" Grade 5 Plated
7	S-968	30	Nut Flange Whiz 3/8"-16 ZN Grade 5
8	S-2120	4	Flat Washer 1/2" SAE
9	S-8760	4	Bolt HHCS 1/2"-13 x 1-1/2" ZN Grade 5
10	S-8260	4	Nylock Nut 1/2"-13
11	S-7520	2	Bolt HHCS 3/8"-16 x 1" ZN Grade 2
12	S-7383	6	Nylock Nut 3/8"-16
13	S-248	10	Flat Washer 3/8" USS ZN YDP Grade 2
14	DFB0045	1	Indexing Shaft
15	S-9288	3	Spring Pin 1/4" x 2-1/2" Long
16	DFB0040	1	Transition Box Support Weldment
17	DFB0043	4	Transition Box Spacer Plate
18	DFB0015	1	10" Transition Box w/ Liner
19	S-7515	4	Bolt HHCS 3/8"-16 x 1-1/2" ZN Grade 5
20	DFB0050	1	Index Tube Assembly
21	DFB0039	1	10" 6 Hole Index Plate
22	DFB0024	1	10" Transition Tube Extension
23	DFB0060	1	10" Brush/Mount Assembly
24	S-7469	16	Bolt HHCS 3/8"-16 x 1" ZN Grade 5
25	S-7521	2	Bolt HHCS 3/8"-16 x 1-1/2" ZN Grade 2

THE GSI GROUP Assumption, IL Engineering Division:		10" 6 HOLE, 45° DISTRIBUTOR ASSEMBLY		Sheet 2 of 2 IMV N/A Drawing No. DFB10645GL	
TOLERANCES (Unless Noted) Fractions +/- 1/32" Decimals +/- 0.03" Angles +/- 1.00°		Sheet Mark N/A	Date 16-Jan-04	Scale NONE	Work In Progress Date Not Set
Revision Description No. ECN		Date By	Checked By	Drawn By BJT	Date 16-Jan-04

DFB10845GL - 10" 8 Hole, 45° Distributor Assembly

Ref #	Part #	Qty	Description
1	DFB0063	1	Body Weldment
2	KD-PFA0003	1	Bearing 1-1/2" Dodge 4B SC Flange
3	S-2120	4	Flat Washer 1/2" SAE
4	S-8760	4	Bolt HHCS 1/2"-13 x 1-1/2" ZN Grade 5
5	S-8260	4	Nylock Nut 1/2"-13
6	DFB0035	1	10" Inlet Sleeve Weldment
7	S-7105	15	Bolt HHCS 3/8"-16 x 3/4" ZN Grade 5 Plated
8	S-968	33	Nut Flange Whiz 3/8"-16 ZN Grade 5
9	DFB0142	1	Indexing Shaft
10	DFB0040	1	Transition Box Support Weldment
11	DFB0043	2	Transition Box Spacer Plate
12	DFB0015	1	10" Transition Box w/ Liner
13	S-9288	5	Spring Pin 1/4" x 2-1/2" Long
14	S-248	13	Flat Washer 3/8" USS ZN YDP Grade 2
15	S-7515	4	Bolt HHCS 3/8"-16 x 1-1/2" ZN Grade 5
16	S-7383	6	Nylock Nut 3/8"-16
17	DFB0079	1	Transition Tube Extension
18	S-7469	16	Bolt HHCS 3/8"-16 x 1" ZN Grade 5
19	DFB0060	1	10" Brush/Mount Assembly
20	S-7521	2	Bolt HHCS 3/8"-16 x 1-1/2" ZN Grade 2
21	DFB0038	1	Index Standoff
22	DFB0064	1	Index Plate
23	DFB0050	1	Index Tube Assembly
24	DFB0032	1	Door/Hinge Assembly
25	S-7520	2	Bolt HHCS 3/8"-16 x 1" ZN Grade 2

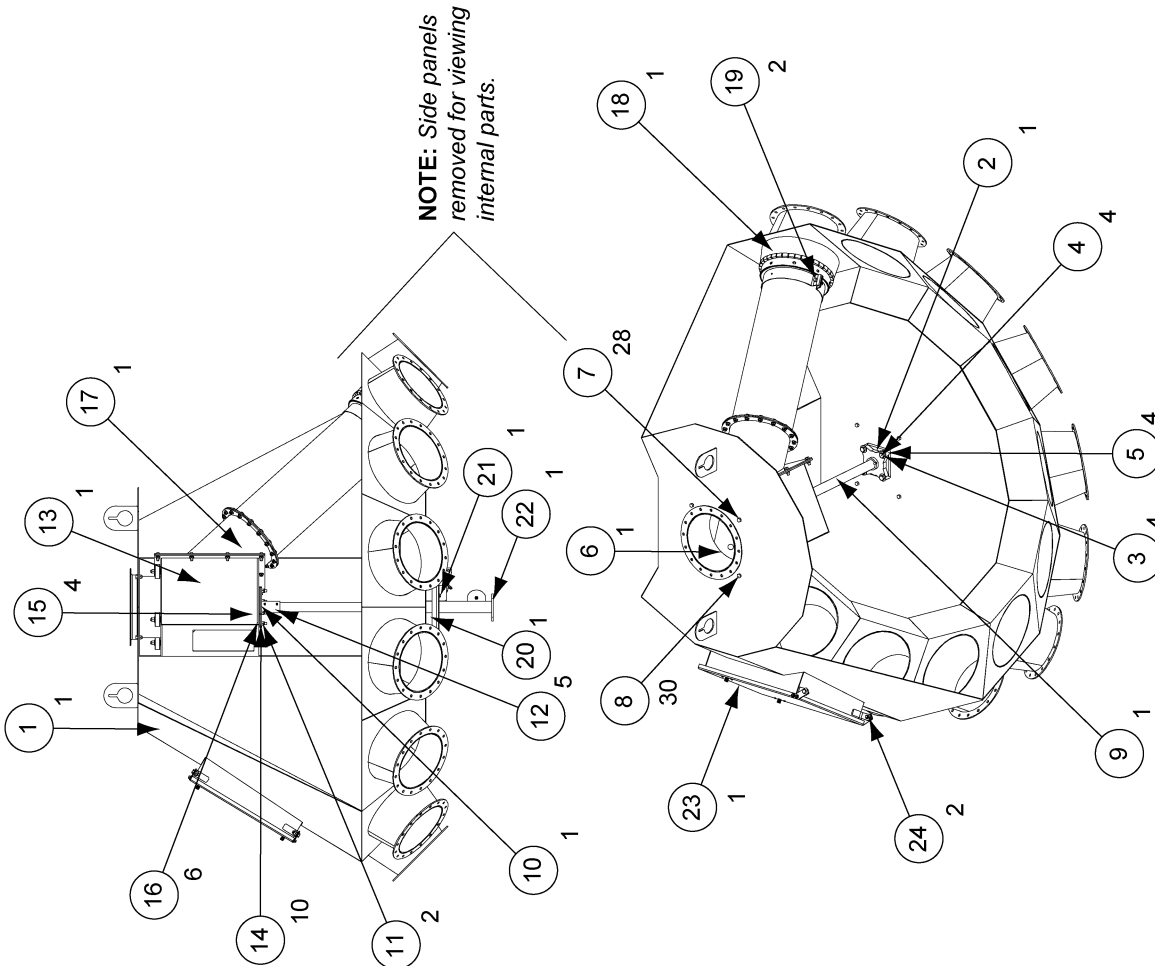
NOTE: Side panels removed for viewing internal parts.



No.	ECN	Revision Description	Date	By	MATERIAL HANDLING	Engineering Division:	THE GSI GROUP Assumption, IL	10" 8 HOLE, 45° DISTRIBUTOR ASSEMBLY			Drawing No. DFB10845GL		
								TOLERANCES (Unless Noted) Fractions ±1/32" Decimals ±.001 Angles ±.1, 1.00	Weight Index	Sheet 1 of 1	Scale	IMV	N/A
								Drawn By BJT	Checked By	Scale	23-Feb-04	None	Work to Dimensions to this Scale

DFB101045GL - 10" 10 Hole, 45° Distributor Assembly

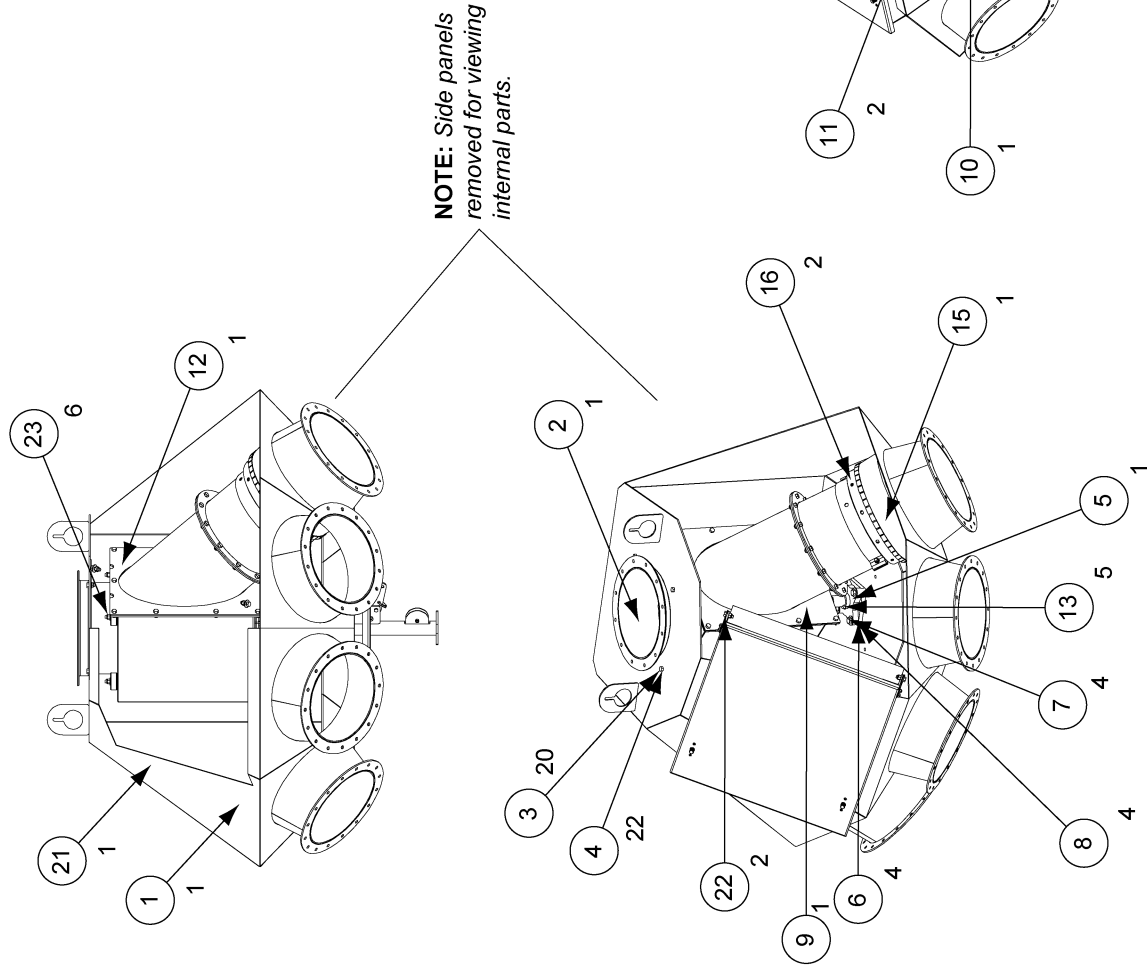
Ref #	Part #	Qty	Description
1	DFB0143	1	Body Weldment
2	KD-PBA0003	1	Bearing 1-1/2" Dodge 4B SC Flange
3	S-2120	4	Flat Washer 1/2" SAE
4	S-8760	4	Bolt HHCS 1/2"-13 x 1-1/2" ZN Grade 5
5	S-8260	4	Nylock Nut 1/2"-13
6	DFB0035	1	10" Inlet Sleeve Weldment
7	S-7105	28	Bolt HHCS 3/8"-16 x 3/4" Grade 5 Plated
8	S-968	30	Nut Flange Whiz 3/8"-16 ZN Grade 5
9	DFB0144	1	Indexing Shaft
10	DFB0040	1	Transition Box Support Weldment
11	DFB0043	2	Transition Box Spacer Plate
12	S-9288	5	Spring Pin 1/4" x 2-1/2" Long
13	DFB0015	1	10" Transition Box w/ Liner
14	S-248	10	Flat Washer 3/8" USS ZN Grade 2
15	S-7515	4	Bolt HHCS 3/8"-16 x 1-1/2" ZN YDP Grade 5
16	S-7583	6	Nylock Nut 3/8"-16
17	DFB0093	1	Transition Tube Extension
18	DFB0060	1	10" Brush/Mount Assembly
19	S-7521	2	Bolt HHCS 3/8"-16 x 1-1/2" ZN Grade 2
20	DFB0038	1	Index Standoff
21	DFB0082	1	10" 10 Hole Index Plate
22	DFB0050	1	Index Tube Assembly
23	DFB0032	1	Door/Hinge Assembly
24	S-7520	2	Bolt HHCS 3/8"-16 x 1" ZN Grade 2



TOLERANCES (Unless Noted) Fractions +/- .1732" Decimals +/- .0031 Angles +/- 1.00		Sheet 1 of 1 Invt: N/A Date: N/A Scale: N/A		Drawing No. DFB101045GL	
THE GSI GROUP Assumption, IL Engineering Division:		10" 10 HOLE, 45° DISTRIBUTOR ASSEMBLY		05-Mar-04 BJT	
MATERIAL HANDLING		Revision Description		Date By	
No.	ECN	Revision Description		Date By	

DFB12445GL - 12" 4 Hole, 45° Distributor Assembly

Ref #	Part #	Qty	Description
1	DFB0230	1	12" 4 Hole Body Weldment
2	DFB0136	1	Inlet Sleeve Weldment
3	S-7105	20	Bolt HHCS 3/8"-16 x 3/4" Grade 5 Plated
4	S-968	22	Nut Flange Vhiz 3/8"-16 ZN Grade 5
5	KD-PBA0003	1	Bearing 1-1/2" Dodge 4B SC Flange
6	S-2120	4	Flat Washer 1/2" SAE
7	S-8760	4	Bolt HHCS 1/2"-13 x 1-1/2" ZN Grade 5
8	S-8260	4	Nylock Nut 1/2"-13
9	DFB0158	1	Indexing Shaft
10	DFB0040	1	Transition Box Support Weldment
11	DFB0043	2	Transition Box Spacer Plate
12	DFB0114	1	Transition Box w/ Liner Assembly
13	S-9288	5	Spring Pin 1/4" x 2-1/2" Long
14	DFB0159	1	Transition Tube Extension
15	DFB0127	1	Brush/Mount Assembly
16	S-7521	2	Bolt HHCS 3/8"-16 x 1-1/2" ZN Grade 2
17	DFB0038	1	Index Standoff
18	DFB0231	1	12" 4 Hole Index Plate
19	S-248	10	Flat Washer 3/8" USS ZN YDP Grade 2
20	DFB0050	1	Index Tube Assembly
21	DFB0146	1	Door/Hinge Assembly
22	S-7520	2	Bolt HHCS 3/8"-16 x 1" ZN Grade 2
23	S-7383	6	Nylock Nut 3/8"-16
24	S-7515	4	Bolt HHCS 3/8"-16 x 1-1/2" ZN Grade 5



Revision Description		Date	By
No.	ECN		
Engineering Divisions: MATERIAL HANDLING			
12" 4 HOLE, 45°			
DISTRIBUTOR ASSEMBLY			
TOLERANCES (Unless Noted) Fractions +/- 1/32" Decimals +/- 0.031 Angles +/- 1.00		Weight Invol	Sheet 1 of 1
Scale		N/A	N/A
Drawn		N/A	N/A
By		BUT	5-28-04
Date			
Inventor			
Rev			
Drawing No.		DFB12445GL	

DFB12645GL - 12" 6 Hole, 45° Distributor Assembly

NOTE: Side panels removed for viewing internal parts.

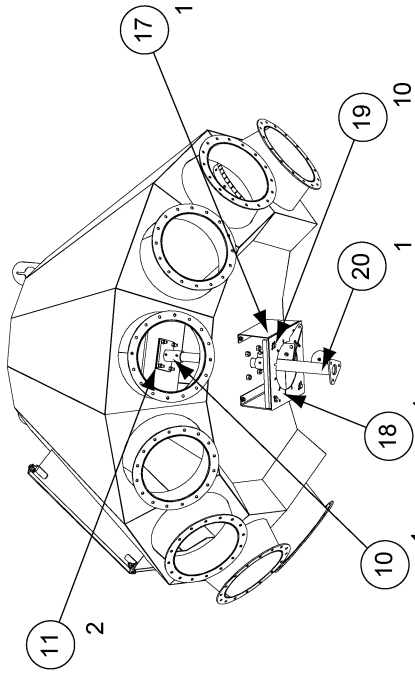
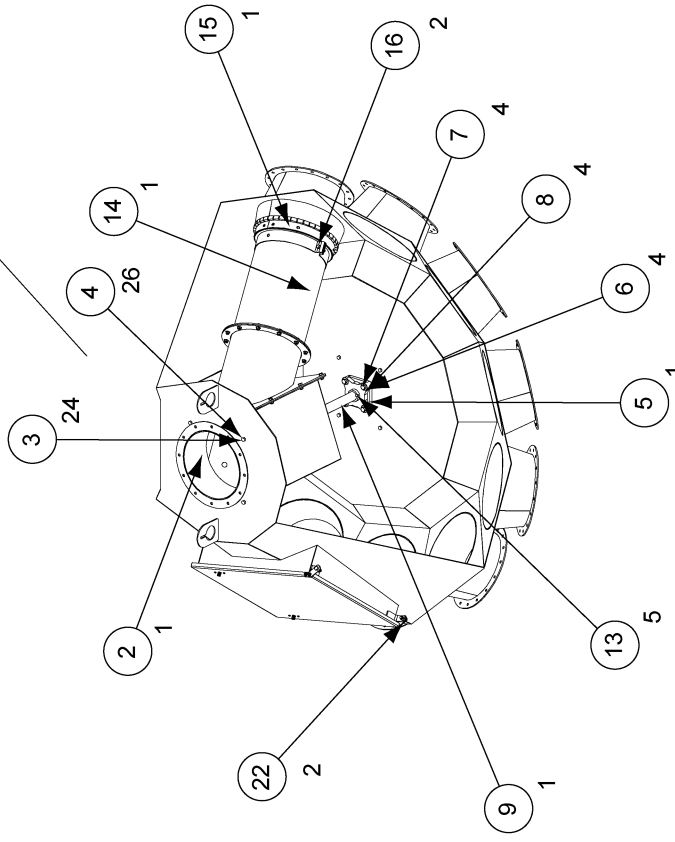
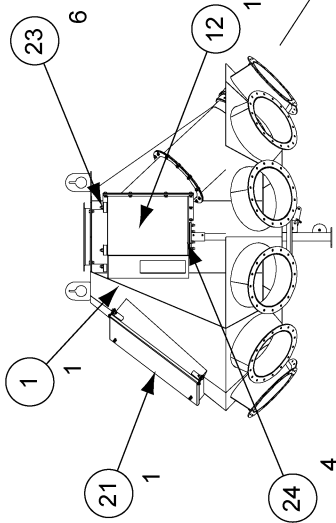
Ref #	Part #	Qty	Description
1	DFB0147	1	12" 6 Hole Body Weldment
2	DFB0136	1	Inlet Sleeve Weldment
3	S-7105	20	Bolt HHCS 3/8"-16 x 3/4" Grade 5 Plated
4	S-968	22	Nut Flange Whiz 3/8"-16 ZN Grade 5
5	KD-PBA0003	1	Bearing 1-1/2" Dodge 4B SC Flange
6	S-2120	4	Flat Washer 1/2" SAE
7	S-8760	4	Bolt HHCS 1/2"-13 x 1-1/2" ZN Grade 5
8	S-8260	4	Nylock Nut 1/2"-13
9	DFB0158	1	Indexing Shaft
10	DFB0040	1	Transition Box Support Weldment
11	DFB0043	2	Transition Box Spacer Plate
12	DFB0114	1	Transition Box w/ Liner Assembly
13	S-9288	5	Spring Pin 1/4" x 2-1/2" Long
14	DFB0159	1	Transition Tube Extension
15	DFB0127	1	Brush/Mount Assembly
16	S-7521	2	Bolt HHCS 3/8"-16 x 1-1/2" ZN Grade 2
17	DFB0038	1	Index Standoff
18	DFB0148	1	12" 6 Hole Index Plate
19	S-248	10	Flat Washer 3/8" USS ZN YDP Grade 2
20	DFB0050	1	Index Tube Assembly
21	DFB0146	1	Door/Hinge Assembly
22	S-7520	2	Bolt HHCS 3/8"-16 x 1" ZN Grade 2
23	S-7383	6	Nylock Nut 3/8"-16
24	S-7515	4	Bolt HHCS 3/8"-16 x 1-1/2" ZN Grade 5

	THE GSI GROUP Assumption, IL	12" 6 HOLE, 45°	Drawing No.
Engineering Division:	Material Handling	DISTRIBUTOR ASSEMBLY	DFB12645GL
No.	ECN	Revision Description	Date
		Sheet 1 of 1	
		N/A	
		N/A	
		N/A	
		12-May-04	
		NONE	
		Work to Dimensions Do Not Scale	

DFB12845GL - 12" 8 Hole, 45° Distributor Assembly

Ref #	Part #	Qty	Description
1	DFB0100	1	Body Weldment
2	DFB0136	1	Inlet Sleeve Weldment
3	S-7105	24	Bolt HHCS 3/8"-16 x 3/4" Grade 5 Plated
4	S-968	26	Nut Flange Whiz 3/8"-16 ZN Grade 5
5	KD-PBA0003	1	Bearing 1-1/2" Dodge 4B SC Flange
6	S-2120	4	Flat Washer 1/2" SAE
7	S-8760	4	Bolt HHCS 1/2"-13 x 1-1/2" ZN Grade 5
8	S-8260	4	Nylock Nut 1/2"-13
9	DFB0145	1	Indexing Shaft
10	DFB0040	1	Transition Box Support Weldment
11	DFB0043	2	Transition Box Spacer Plate
12	DFB0114	1	Transition Box w/ Liner Assembly
13	S-9288	5	Spring Pin 1/4" x 2-1/2" Long
14	DFB0125	1	Transition Tube Extension
15	DFB0127	1	Brush/Mount Assembly
16	S-7521	2	Bolt HHCS 3/8"-16 x 1-1/2" ZN Grade 2
17	DFB0038	1	Index Standoff
18	DFB0101	1	Index Plate
19	S-248	10	Flat Washer 3/8" USS ZN YDP Grade 2
20	DFB0050	1	Index Tube Assembly
21	DFB0146	1	Door/Hinge Assembly
22	S-7520	2	Bolt HHCS 3/8"-16 x 1" ZN Grade 2
23	S-7983	6	Nylock Nut 3/8"-16
24	S-7515	4	Bolt HHCS 3/8"-16 x 1-1/2" ZN Grade 5

NOTE: Side panels removed for viewing internal parts.



No.		ECN	Revision Description	Date	By
MATERIAL HANDLING					
Engineering Division:					
THE GSI GROUP					
Assumption, IL					
12" 8 HOLE, 45°					
DISTRIBUTOR ASSEMBLY					
TOLERANCES		Sheet 1 of 1		Drawing No.	
(Unless Noted)		Weight	N/A	MW	N/A
Fractions +/- 1/32"		Inch	N/A	Ship	N/A
Decimals +/- 0.03"		By	BJT	Date	Scale
Angles +/- 1.00		Drawn	12-Mar-04	Date	NONE
		Checked		Date	Work to Dimensions
		By		Date	Do Not Scale
DFB12845GL					

DFB121045GL - 12" 10 Hole, 45° Distributor Assembly

Ref #	Part #	Qty	Description
1	DFB0331	1	Body Weldment
2	KD-PBA0003	1	Bearing 1-1/2" Dodge 4B SC Flange
3	S-2120	4	Flat Washer 1/2" SAE
4	S-8760	4	Bolt HHCS 1/2"-13 x 1-1/2" ZN Grade 5 Plated
5	S-9260	4	Nylock Nut 1/2"-13
6	S-7105	24	Bolt HHCS 3/8"-16 x 3/4" Grade 5 Plated
7	DFB0344	1	Indexing Shaft
8	DFB0040	1	Transition Box Support Weldment
9	DFB0043	2	Transition Box Spacer Plate
10	S-9288	5	Spring Pin 1/4" x 2-1/2" Long
11	DFB0114	1	Transition Box w/ Liner Assembly
12	S-248	10	Flat Washer 3/8" USS ZN YDP Grade 2
13	S-7515	4	Bolt HHCS 3/8"-16 x 1-1/2" ZN Grade 5
14	S-7383	6	Nylock Nut 3/8"-16
15	DFB0038	1	Index Standoff
16	DFB0082	1	10" 10 Hole Index Plate
17	DFB0050	1	Index Tube Assembly
18	S-968	26	Nut Flange Whiz 3/8"-16 ZN Grade 5
19	DFB0136	1	Inlet Sleeve Weldment
20	DFB0345	1	Transition Tube Extension
21	DFB0127	1	Brush/Mount Assembly
22	S-7521	2	Bolt HHCS 3/8"-16 x 1-1/2" ZN Grade 2
23	DFB0146	1	Door/Hinge Assembly
24	S-7520	2	Bolt HHCS 3/8"-16 x 1" ZN Grade 2

NOTE: Side panels removed for viewing internal parts.

Sheet 1 of 1

Weight	N/A
Index	N/A
Size	N/A
Scale	N/A
Drawn By	BJT
Checked By	
Date	3-29-05

Drawing No.
DFB121045GL

<p>TOLERANCES (Unless Noted) Fractions +/- 1/32" Decimals +/- 0.001" Angles +/- 1.00</p>		<p>THE GSI GROUP Assumption, IL Engineering Division:</p>	<p>12" 10 HOLE, 45° DISTRIBUTOR ASSEMBLY</p>
No.	ECN	Revision Description	Date

DFB14445GL - 14" 4 Hole, 45° Distributor Assembly

Ref #	Part #	Qty	Description
1	DFB0315	1	14" 4 Hole Body Weldment
2	DFB0313	1	Inlet Sleeve Weldment
3	S-7105	24	Bolt HHCS 3/8"-16 x 3/4" Grade 5 Plated
4	S-968	26	Nut Flange Whiz 3/8"-16 ZN Grade 5
5	KD-PBA0003	1	Bearing 1-1/2" Dodge 4B SC Flange
6	S-2120	4	Flat Washer 1/2" SAE
7	S-8760	4	Bolt HHCS 1/2"-13 x 1-1/2" ZN Grade 5
8	S-8260	4	Nylock Nut 1/2"-13
9	DFB0326	1	Indexing Shaft
10	DFB0040	1	Transition Box Support Weldment
11	DFB0043	2	Transition Box Spacer Plate
12	DFB0261	1	Transition Box w/ Liner Assembly
13	S-9288	5	Spring Pin 1/4" x 2-1/2" Long
14	DFB0327	1	Transition Extension Tube Assembly
15	DFB0274	1	Brush/Mount Assembly
16	S-7521	2	Bolt HHCS 3/8"-16 x 1-1/2" ZN Grade 2
17	DFB0038	1	Index Standoff
18	DFB0231	1	12" 4 Hole Index Plate
19	S-248	10	Flat Washer 3/8" USS ZN YDP Grade 2
20	DFB0050	1	Index Tube Assembly
21	DFB0288	1	Door/Hinge Assembly
22	S-7520	2	Bolt HHCS 3/8"-16 x 1" ZN Grade 2
23	S-7383	6	Nylock Nut 3/8"-16
24	S-7515	4	Bolt HHCS 3/8"-16 x 1-1/2" ZN Grade 5
25	DFB0296	4	Outlet Cone Liner

Not shown:
DFB0291 (4) - Silicon hole plugs hardware for outlet
Liner fastening:
S-8213 (16) - Elevator bolt 1/4" x 1" flanged
S-7215 (16) - Flanged whiz lock nut 1/4"-20

NOTE: Side panels removed for viewing internal parts.

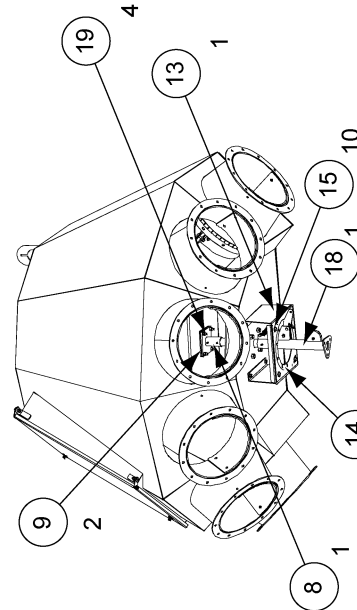
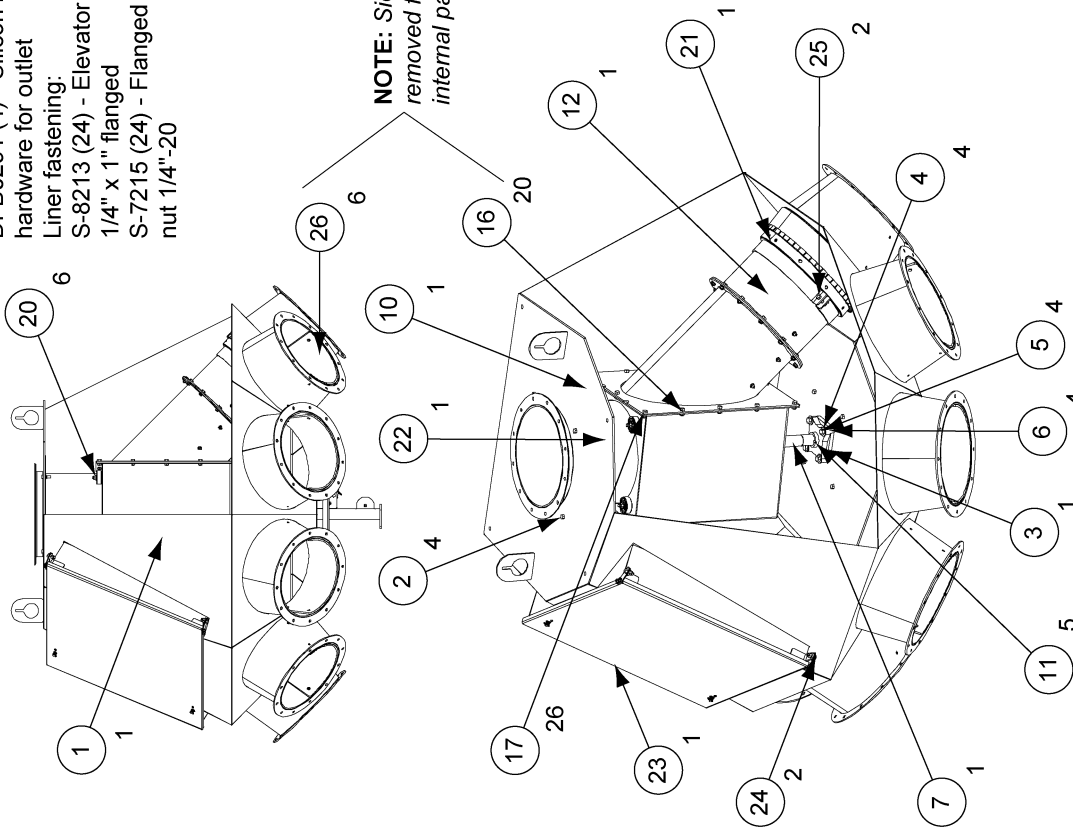
No.	ECN	Revision	Description	Date	By		
THE GST GROUP Assumption, IL				14" 4 HOLE, 45°			
Engineering Division: MATERIAL HANDLING				DISTRIBUTOR ASSEMBLY			
TOLERANCES (Unless Noted) Fractions +/- 1/32" Decimals +/- 0.031" Angles +/- 1.00				Sheet 1 of 1		Drawing No.	
Weight Index		N/A		N/A		N/A	
Scale		2-1-05		NONE		DFB14445GL	

DFB14645GL - 14" 6 Hole, 45° Distributor Assembly

Ref #	Part #	Qty	Description
1	DFB0298	1	14" 6 Hole Body Weldment
2	S-2071	4	Bolt HHCS 3/8"-16 x 1-1/4" ZN Grade 5
3	KD-PBA0003	4	Bearing 1-1/2" Dodge 4B SC Flange
4	S-2120	4	Flat Washer 1/2" SAE
5	S-7811	4	Bolt HHCS 1/2"-13 x 2" ZN
6	S-8260	4	Nylock Nut 1/2"-13
7	DFB0308	1	Indexing Shaft
8	DFB0040	1	Transition Box Support Weldment
9	DFB0043	2	Transition Box Spacer Plate
10	DFB0261	1	Transition Box w/ Liner Assembly
11	S-9288	5	Spring Pin 1/4" x 2-1/2" Long
12	DFB0312	1	Transition Extension Tube Assembly
13	DFB0038	1	Index Standoff
14	DFB0148	1	12" 6 Hole Index Plate
15	S-248	10	Flat Washer 3/8" USS ZN YDP Grade 2
16	S-7105	20	Bolt HHCS 3/8"-16 x 3/4" ZN Grade 5 Plated
17	S-968	26	Flange Whiz Nut 3/8"-16 ZN Grade 5
18	DFB0050	1	Index Tube Assembly
19	S-7515	4	Bolt HHCS 3/8"-16 x 1-1/2" ZN Grade 5
20	S-7383	6	Nylock Nut 3/8"-16
21	DFB0274	1	Brush/Mount Assembly
22	DFB0313	1	Inlet Sleeve Weldment
23	DFB0288	1	Door/Hinge Assembly
24	S-7520	2	Bolt HHCS 3/8"-16 x 1" ZN Grade 2
25	S-7521	2	Bolt HHCS 3/8"-16 x 1-1/2" ZN Grade 2
26	DFB0296	6	Outlet Cone Liner

Not shown:
 DFB0291 (4) - Silicon hole plugs
 hardware for outlet
 Liner fastening:
 S-8213 (24) - Elevator bolt
 1/4" x 1" flanged
 S-7215 (24) - Flanged whiz lock
 nut 1/4"-20

NOTE: Side panels
 removed for viewing
 internal parts.



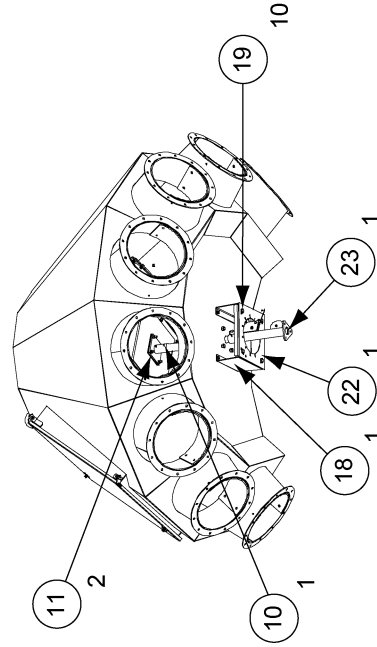
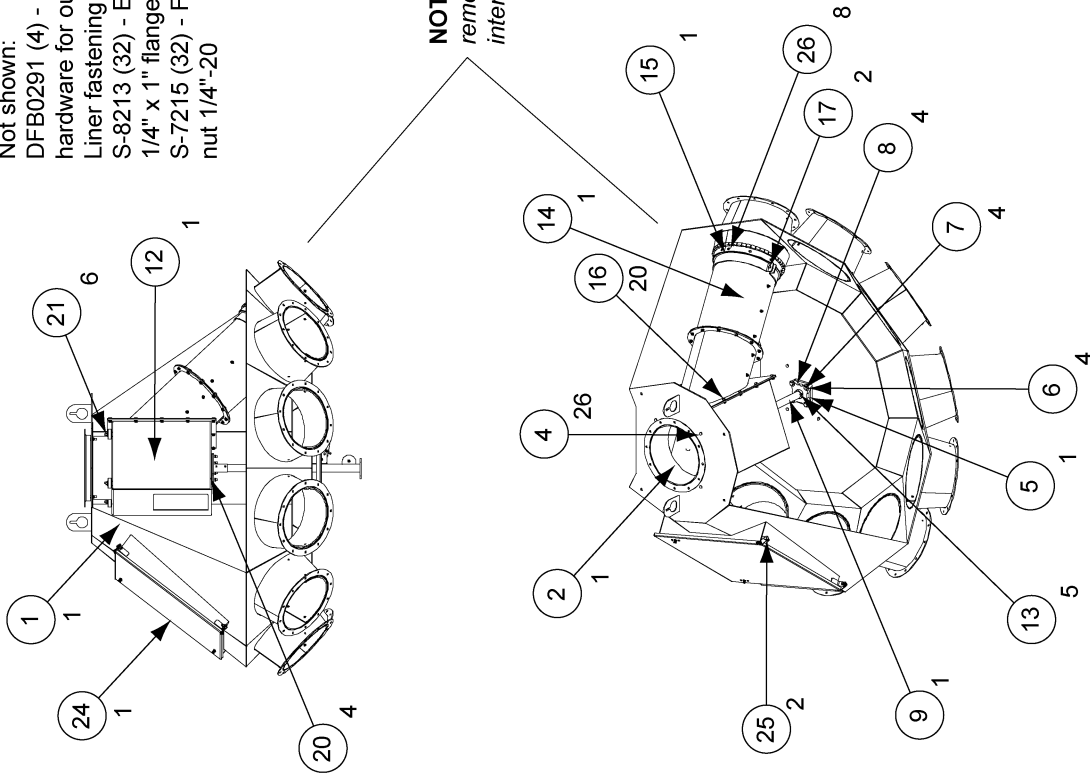
No.		ECN	Revision	Description	Date	By	
<p>MATERIAL HANDLING</p>							
<p>DISTRIBUTOR ASSEMBLY</p>							
<p>14" 6 HOLE, 45°</p>							
<p>THE GSI GROUP Assumption, IL</p>							
<p>Engineering Divisions</p>							
<p>Sheet 1 of 1</p>							
TOLERANCES (Unless Noted) Fractions ±.1/32" Decimals ±.003" Angles ±.1-1.00		Drawn By BJT		Date 1-7-05		Scale NONE Work to Dimensions Do Not Scale	
Drawing No. DFB14645GL							

DFB14845GL - 14" 8 Hole, 45° Distributor Assembly

Ref #	Part #	Qty	Description
1	DFB0246	1	Body Weldment
2	DFB0282	1	Inlet Sleeve Weldment
3	S-2071	4	Bolt HHCS 3/8"-16 x 1-1/4" ZN Grade 5
4	S-968	26	Nut Flange Whiz 3/8"-16 ZN Grade 5
5	KD-PBA0003	1	Bearing 1-1/2" Dodge 4B SC Flange
6	S-2120	4	Flat Washer 1/2" SAE
7	S-7811	4	Bolt HHCS 1/2"-13 x 2" ZN
8	S-8260	4	Nylock Nut 1/2"-13
9	DFB0287	1	Indexing Shaft
10	DFB0040	1	Transition Box Support Weldment
11	DFB0043	2	Transition Box Spacer Plate
12	DFB0261	1	Transition Box w/ Liner Assembly
13	S-9288	5	Spring Pin 1/4" x 2-1/2" Long
14	DFB0293	1	Transition Extension Tube Assembly
15	DFB0274	1	Brush/Mount Assembly
16	S-7105	20	Bolt HHCS 3/8"-16 x 3/4" Grade 5 Plated
17	S-7521	2	Bolt HHCS 3/8"-16 x 1-1/2" ZN Grade 2
18	DFB0038	1	Index Standoff
19	S-248	10	Flat Washer 3/8" USS ZN YDP Grade 2
20	S-7515	4	Bolt HHCS 3/8"-16 x 1-1/2" ZN Grade 5
21	S-7383	6	Nylock Nut 3/8"-16
22	DFB0101	1	Index Plate
23	DFB0050	1	Index Tube Assembly
24	DFB0288	1	Door/Hinge Assembly
25	S-7520	2	Bolt HHCS 3/8"-16 x 1" ZN Grade 2
26	DFB0296	8	Outlet Cone Liner

Not shown:
 DFB0291 (4) - Silicon hole plugs
 hardware for outlet
 Liner fastening:
 S-8213 (32) - Elevator bolt
 1/4" x 1" flanged
 S-7215 (32) - Flanged whiz lock
 nut 1/4"-20

NOTE: Side panels
 removed for viewing
 internal parts.



No.	ECN	Revision Description	Date	By	MATERIAL HANDLING	Engineering Division: Assumption, IL	THE GSI GROUP		14" 8 HOLE, 45°		Sheet 1 of 1		Drawing No.	
							Assumption, IL		DISTRIBUTOR ASSEMBLY		N/A		N/A	
						TOLERANCES (Unless Noted) Fractions +/- .132" Decimals +/- 0.031 Angles +/- 1.00						Weight Index: N/A Ship Wt.: N/A Scale: NONE Drawn By: BJT Date: 10-Aug-04 Checked By: [blank] Date: [blank] Work to Dimensions: DWT Scale		



Limited Warranty

The GSI Group, LLC. ("GSI") warrants products which it manufactures to be free of defects in materials and workmanship under normal usage and conditions for a period of 12 months after sale to the original end-user or if a foreign sale, 14 months from arrival at port of discharge, whichever is earlier. The end-user's sole remedy (and GSI's only obligation) is to repair or replace, at GSI's option and expense, products that in GSI's judgment, contain a material defect in materials or workmanship. Expenses incurred by or on behalf of the end-user without prior written authorization from the GSI Warranty Group shall be the sole responsibility of the end-user.

Warranty Extensions: The Limited Warranty period is extended for the following products:

	Product	Warranty Period
AP Fans and Flooring	Performer Series Direct Drive Fan Motor	3 Years
	All Fiberglass Housings	Lifetime
	All Fiberglass Propellers	Lifetime
Cumberland Feeding/Watering Systems	Feeder System Pan Assemblies	5 Years **
	Feed Tubes (1.75" & 2.00")	10 Years *
	Centerless Augers	10 Years *
	Watering Nipples	10 Years *
Grain Systems	Grain Bin Structural Design	5 Years
Grain Systems Farm Fans Zimmerman	Portable & Tower Dryers	2 Years
	Portable & Tower Dryer Frames and Internal Infrastructure †	5 Years

* Warranty prorated from list price:
 0 to 3 years – no cost to end-user
 3 to 5 years – end-user pays 25%
 5 to 7 years – end-user pays 50%
 7 to 10 years – end user pays 75%

** Warranty prorated from list price:
 0 to 3 years – no cost to end-user
 3 to 5 years – end-user pays 50%

† Motors, burner components and moving parts not included. Portable Dryer screens included. Tower Dryer screens not included.

GSI further warrants that the portable and tower dryer frame and basket, excluding all auger and auger drive components, shall be free from defects in materials for a period of time beginning on the twelfth (12th) month from the date of purchase and continuing until the sixtieth (60th) month from the date of purchase (extended warranty period). During the extended warranty period, GSI will replace the frame or basket components that prove to be defective under normal conditions of use without charge, excluding the labor, transportation, and/or shipping costs incurred in the performance of this extended warranty.

Conditions and Limitations:

THERE ARE NO WARRANTIES THAT EXTEND BEYOND THE LIMITED WARRANTY DESCRIPTION SET FORTH ABOVE. SPECIFICALLY, GSI MAKES NO FURTHER WARRANTY OF ANY KIND, EXPRESS OR IMPLIED, INCLUDING, WITHOUT LIMITATION, WARRANTIES OF MERCHANTABILITY OR FITNESS FOR A PARTICULAR PURPOSE OR USE IN CONNECTION WITH: (i) PRODUCT MANUFACTURED OR SOLD BY GSI OR (ii) ANY ADVICE, INSTRUCTION, RECOMMENDATION OR SUGGESTION PROVIDED BY AN AGENT, REPRESENTATIVE OR EMPLOYEE OF GSI REGARDING OR RELATED TO THE CONFIGURATION, INSTALLATION, LAYOUT, SUITABILITY FOR A PARTICULAR PURPOSE, OR DESIGN OF SUCH PRODUCTS.

GSI shall not be liable for any direct, indirect, incidental or consequential damages, including, without limitation, loss of anticipated profits or benefits. The sole and exclusive remedy is set forth in the Limited Warranty, which shall not exceed the amount paid for the product purchased. This warranty is not transferable and applies only to the original end-user. GSI shall have no obligation or responsibility for any representations or warranties made by or on behalf of any dealer, agent or distributor.

GSI assumes no responsibility for claims resulting from construction defects or unauthorized modifications to products which it manufactured. Modifications to products not specifically delineated in the manual accompanying the equipment at initial sale will void the Limited Warranty.

This Limited Warranty shall not extend to products or parts which have been damaged by negligent use, misuse, alteration, accident or which have been improperly/inadequately maintained. This Limited Warranty extends solely to products manufactured by GSI.

Prior to installation, the end-user has the responsibility to comply with federal, state and local codes which apply to the location and installation of products manufactured or sold by GSI.

This equipment shall be installed in accordance with the current installation codes and applicable regulations which should be carefully followed in all cases. Authorities having jurisdiction should be consulted before installations are made.

G S I G R O U P



GSI Group
1004 E. Illinois St.
Assumption, IL 62510-0020
Phone: 1-217-226-4421
Fax: 1-217-226-4420
www.gsiag.com