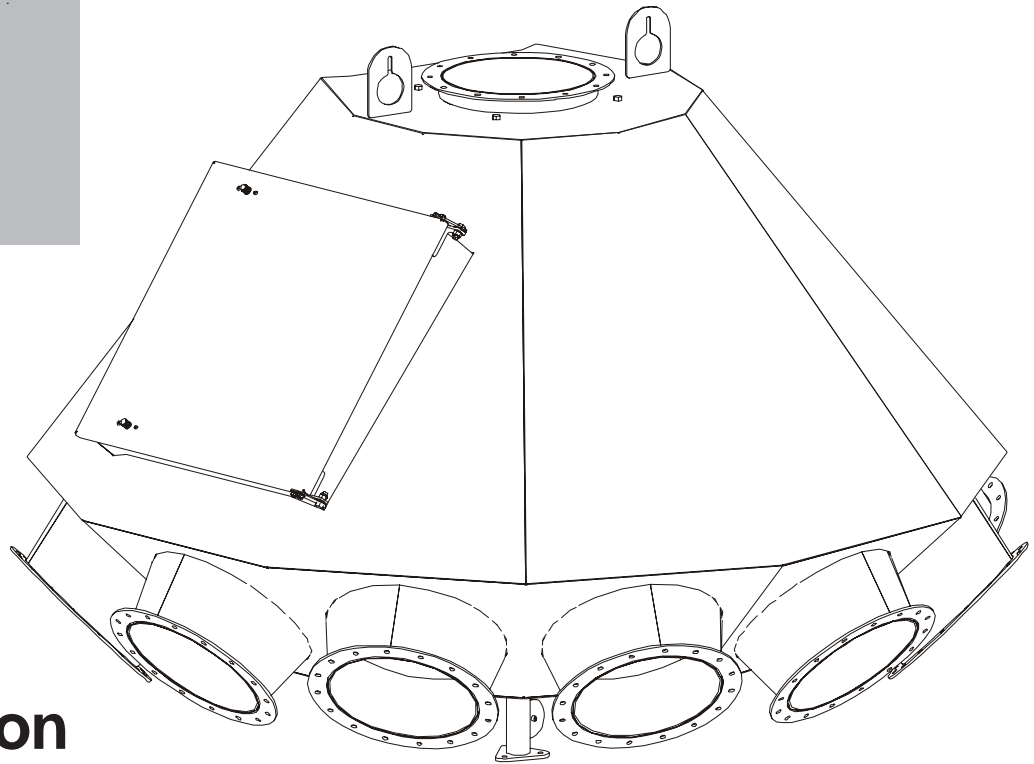


Farm/Commercial Distributor



Instruction Manual PNEG-1385

DATE: 10-16-2006



PNEG-1385

Table of Contents

Safety Guidelines	4
Introduction	6
Installation Notes	7
Maintenance	8
Replacing Wear Liner	8
Grease Bearing	8
Replace Brush Assembly	10
Parts	11
DFB08645GL (8" 6 Hole)	12
DFB08845GL (8" 8 Hole)	13
DFB081045GL (8" 10 Hole)	14
DFB10645GL - Drawing A (10" 6 Hole)	15
DFB10645GL - Drawing B (10" 6 Hole)	16
DFB10845GL (10" 8 Hole)	17
DFB101045GL (10" 10 Hole)	18
DFB12445GL (12" 4 Hole)	19
DFB12645GL (12" 6 Hole)	20
DFB12845GL (12" 8 Hole)	21
DFB121045GL (12" 10 Hole)	22
DFB14445GL (14" 4 Hole)	23
DFB14645GL (14" 6 Hole)	24
DFB14845GL (14" 8 Hole)	25
Warranty	Inside Back Cover

SAFETY GUIDELINES

This manual contains information that is important for you, the owner/operator, to know and understand. This information relates to protecting **personal safety** and **preventing equipment problems**. It is the responsibility of the owner/operator to inform anyone operating or working in the area of this equipment of these safety guidelines. To help you recognize this information, we use the symbols that are defined below. Please read the manual and pay attention to these sections. Failure to read this manual and it's safety instructions is a misuse of the equipment and may lead to serious injury or death.



This is the safety alert symbol. It is used to alert you to potential personal injury hazards. Obey all safety messages that follow this symbol to avoid possible injury or death.



DANGER indicates an imminently hazardous situation which, if not avoided, will result in death or serious injury.



WARNING indicates a potentially hazardous situation which, if not avoided, could result in death or serious injury.



CAUTION indicates a potentially hazardous situation which, if not avoided, may result in minor or moderate injury.



CAUTION used without the safety alert symbol indicates a potentially hazardous situation which, if not avoided, may result in property damage.



NOTE indicates information about the equipment that you should pay special attention to.

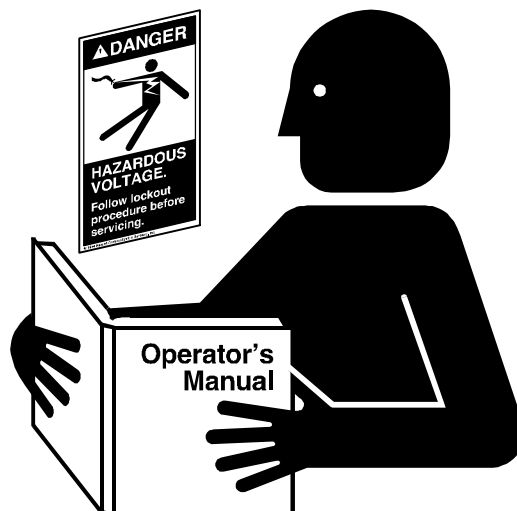
FOLLOW SAFETY INSTRUCTIONS

Carefully read all safety messages in this manual and on your machine safety signs. Keep signs in good condition. Replace missing or damaged safety signs. Be sure new equipment components and repair parts include the current safety signs. Replacement safety signs are available from the manufacturer.

Learn how to operate the machine and how to use controls properly. Do not let anyone operate without instruction.

Keep your machinery in proper working condition. Unauthorized modifications to the machine may impair the function and/or safety and affect machine life.

If you do not understand any part of this manual and need assistance, contact your dealer.

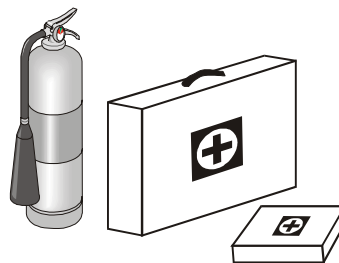


PREPARE FOR EMERGENCIES

Be prepared if fire starts.

Keep a first aid kit and fire extinguisher handy.

Keep emergency numbers for doctors, ambulance service, hospital, and fire department near your telephone.



WEAR PROTECTIVE CLOTHING

Wear close fitting clothing and safety equipment appropriate to the job.

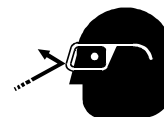
Safety glasses should be worn at all times to protect eyes from debris.

Wear gloves to protect your hands from sharp edges on plastic or steel parts.

A respirator may be needed to help prevent breathing potentially toxic fumes and dust.

Wear hard hat and steel toe boots to help protect your head and toes from falling debris.

Eye
Protection



Gloves



Steel Toe
Boots



Respirator



Hard Hat



Introduction

Thank you for choosing this product. It is designed to give excellent performance and service for many years.

This manual covers general information on the distributor installation. Due to the wide variety of field conditions we cannot cover every aspect of installation. We offer one method for installing equipment but, rely on your qualified contractor's experience and techniques. Some conditions and surroundings do not allow certain practices during the installation of equipment. We can not be responsible for the installation of the distributor and accessories. We encourage anyone installing, or maintaining this equipment to thoroughly read this manual before proceeding.

The company is the vendor of the distributor and certain of its optional accessories only, and does not assume responsibility for the installation. The installation recommendations contained within this manual are for consideration only.

READ THIS MANUAL carefully to learn how to properly use and install this equipment. Failure to do so could result in personal injury or equipment damage.

INSPECT the shipment immediately upon arrival. The Customer is responsible for ensuring that all quantities are correct. Report any damage or shortages by recording a detailed description on the Bill of Lading to justify the Customer's claim from the Transport Firm. Our responsibility for damage to the equipment ends with acceptance by the delivering carrier. Save all paperwork and documentation furnished with any of the equipment.

THIS MANUAL SHOULD BE CONSIDERED a permanent part of your equipment and should be easily accessible when needed.

A WARRANTY is provided as part of the company's support program for customers who use and maintain their equipment as described in the manual. The warranty is explained on the warranty page located on the inside back cover of this manual.

This warranty provides you the assurance that the company will back its products where defects appear within the warranty period. Should the equipment be abused, or modified to change its performance beyond the factory specifications, the warranty will become void and field improvements may be denied.

NOTE

All information, illustrations, photos, and specifications in this manual are based on the latest information available at the time of publication. The right is reserved to make changes at any time without notice.

Installation Notes

⚠ DANGER

If you must get inside of Distributor, turn **OFF** and **LOCK OUT** all power sources. **DO NOT** operate the Distributor while inside.

⚠ DANGER

Crush Hazard! Lifting lugs are to be used for placement only. **DO NOT** use lifting lugs for structural support. (See Figure 1)

⚠ CAUTION

DO NOT use a clamp band when attaching the down spout to the inlet flange. A bolted connection is required at this point. (See Figure 1.)

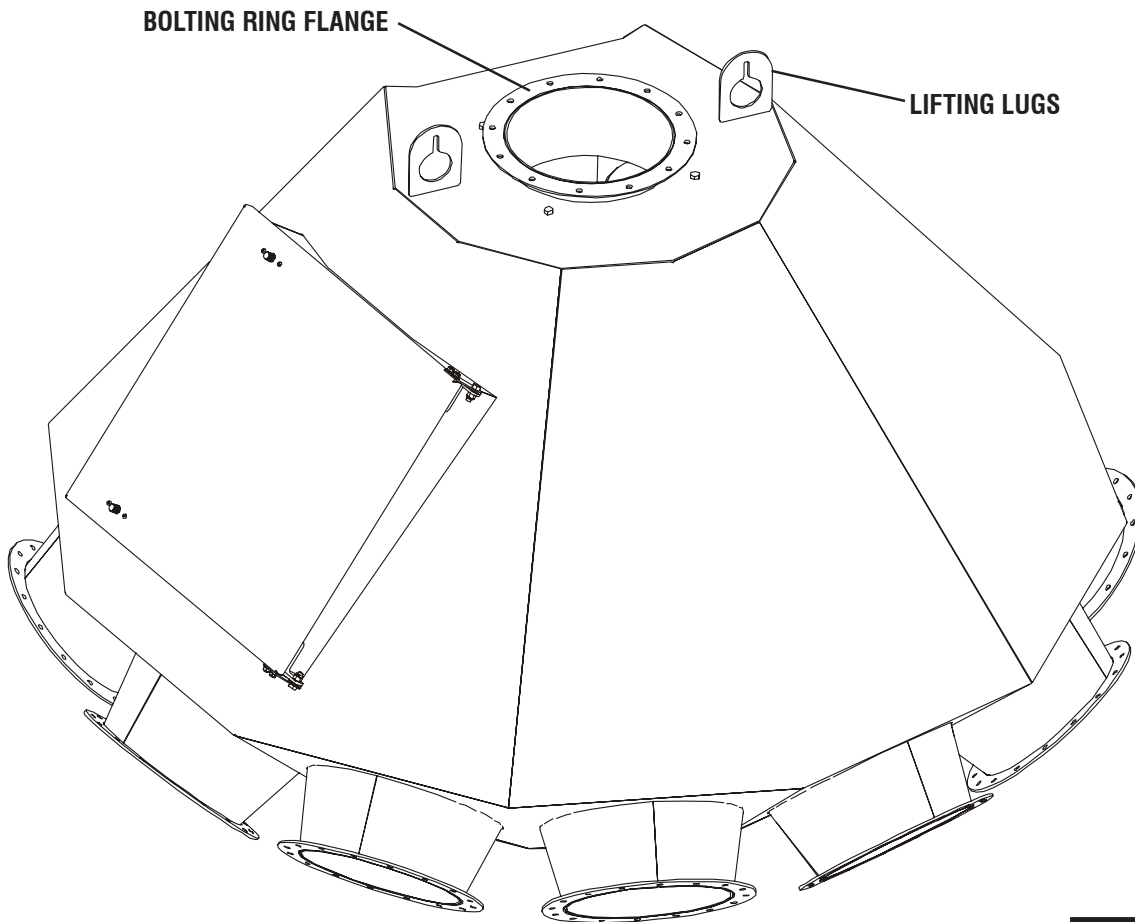


FIGURE 1

Maintenance

REPLACING THE WEAR LINER

Position the spouting near the door. Remove the transition extension tube (See Figure 2) Remove the transition spout (See Figure 2). Reverse the transition box which will allow access to the hardware holding the liner in (See Figure 3). Replace the old liner with the new liner. (See Figure 4) Replace the transition spout and transition extension tube.

Replacement Liner Numbers:

8" - DFB0183, 10" - DFB0051, 12" - DFB0121

GREASING THE BEARING

The bearing is greased at the factory and is ready for operation. Lubricate annually using a No. 2 Lithium based grease or equivalent. (See Figure 2)

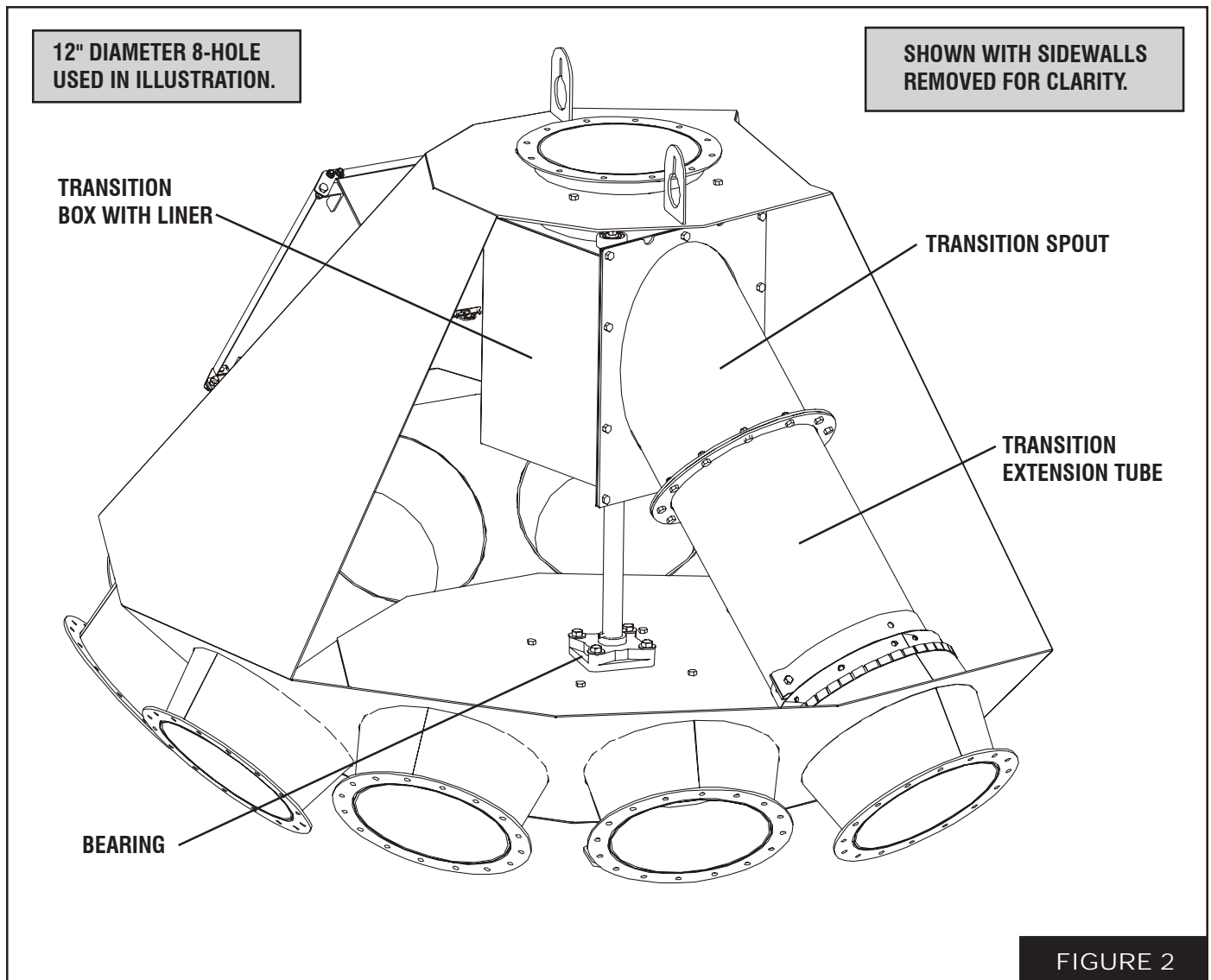


FIGURE 2

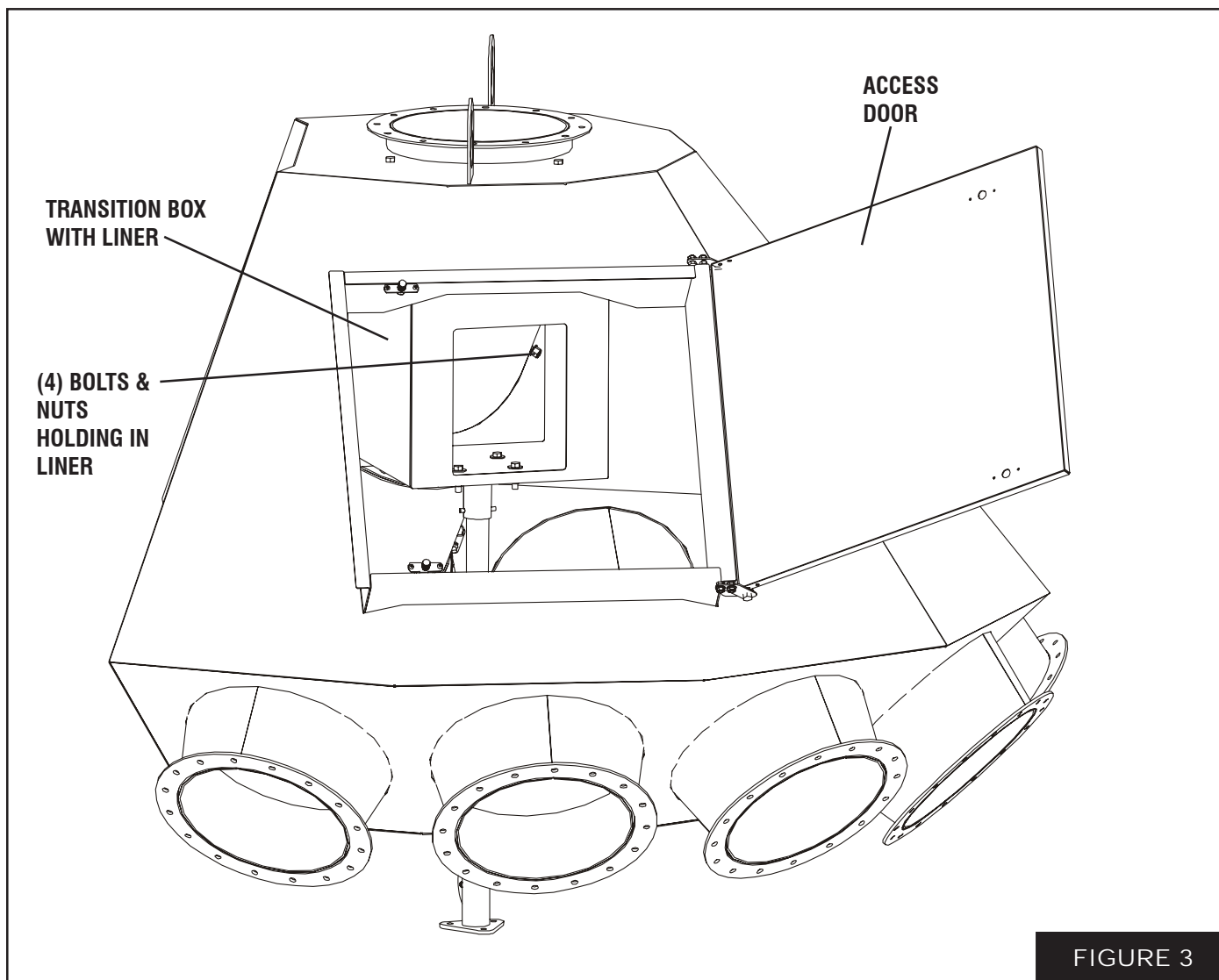


FIGURE 3

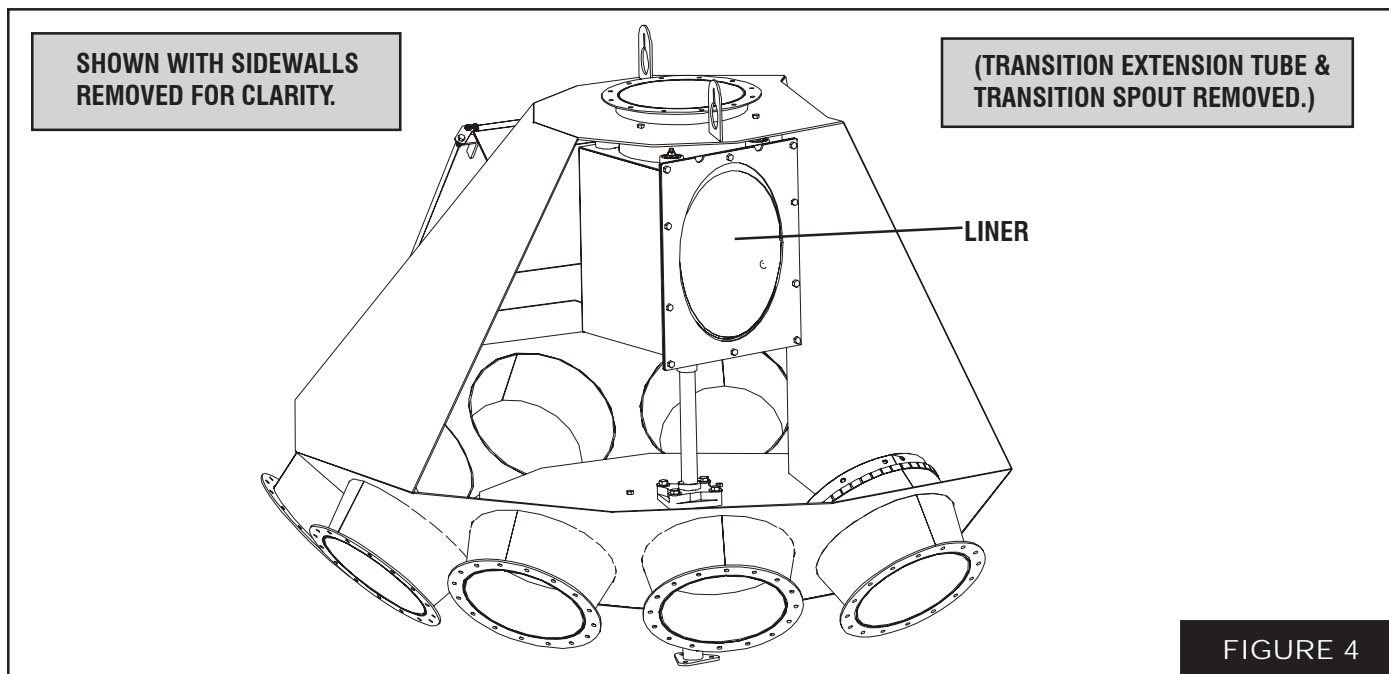


FIGURE 4

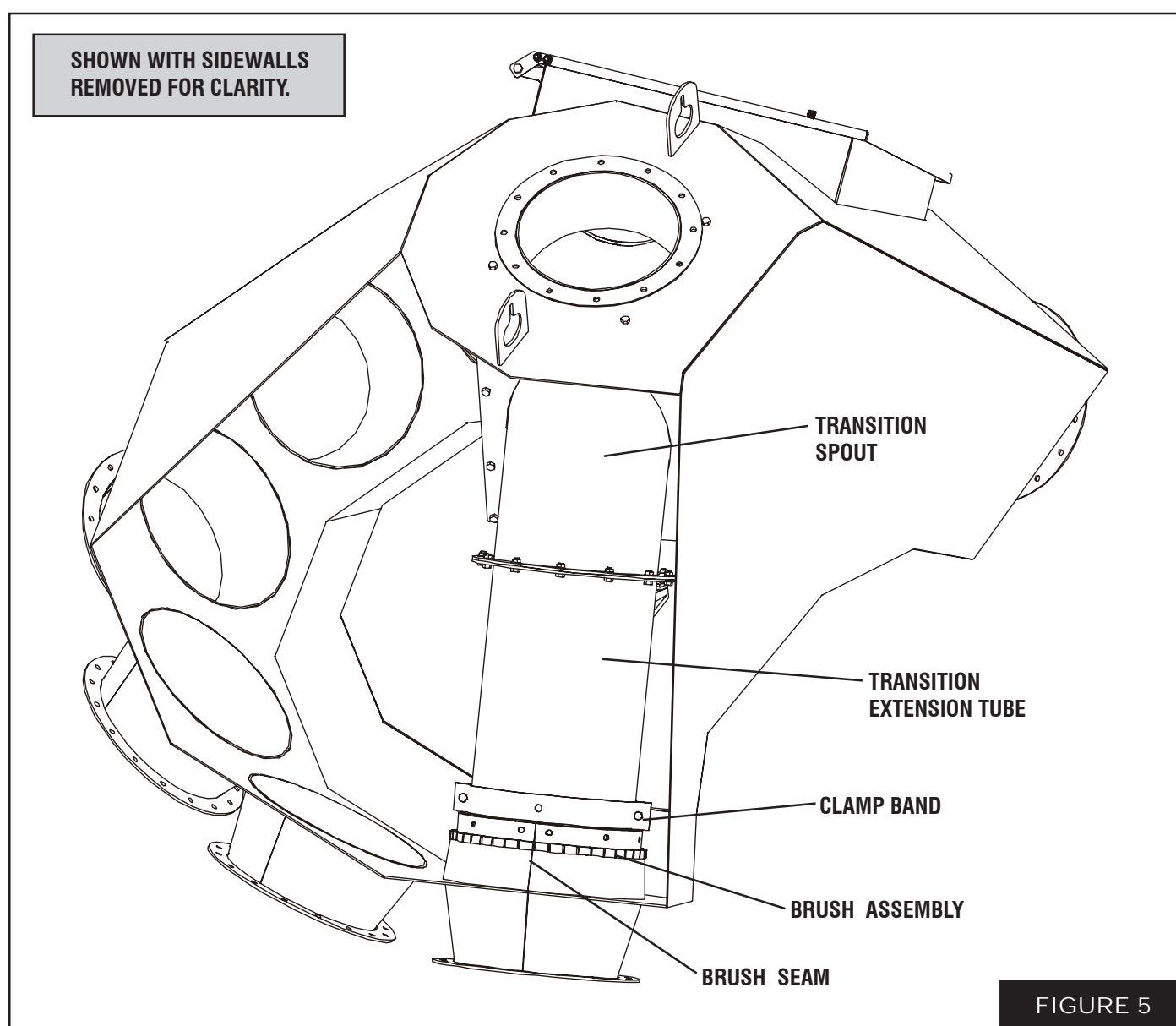
REPLACING THE BRUSH MOUNT ASSEMBLY

Position the spouting near the door. Remove the transition extension tube (See Figure 5). Loosen the clamp band and remove old brush assembly from the transition extension tube. Replace the new brush assembly onto transition extension tube and tighten in place using the clamp band. Replace the transition extension tube/brush assembly.

NOTE: Make sure the seam of the brush assembly is facing towards the top as shown in Fig 5. The brush bristles should be somewhat snug against the spout wall. Operate the spout to all outlets to insure proper alignment and clearance.

Replacement Brush Assembly Numbers:

8" - DFB0189, 10" - DFB0060, 12" - DFB0127

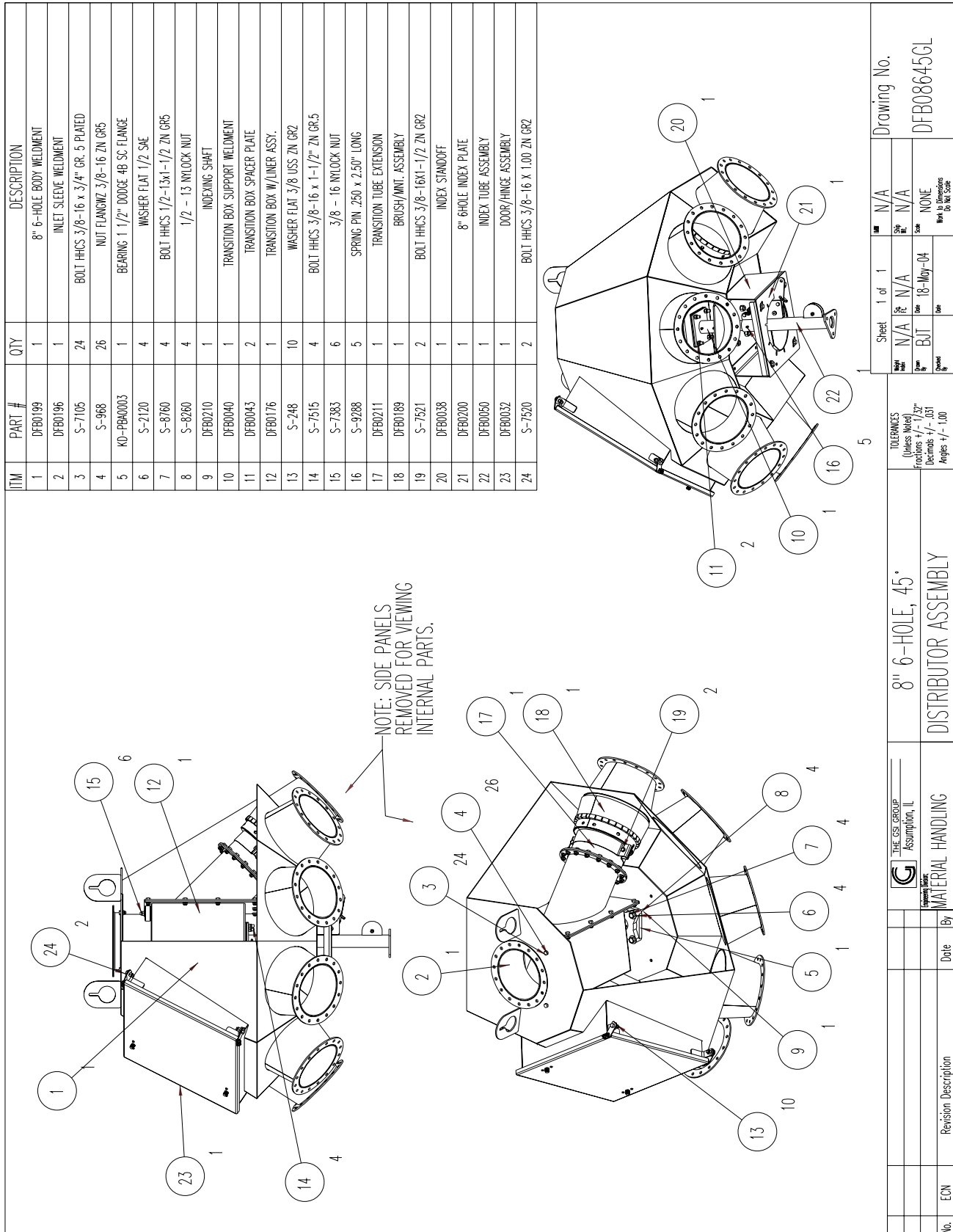


Parts List

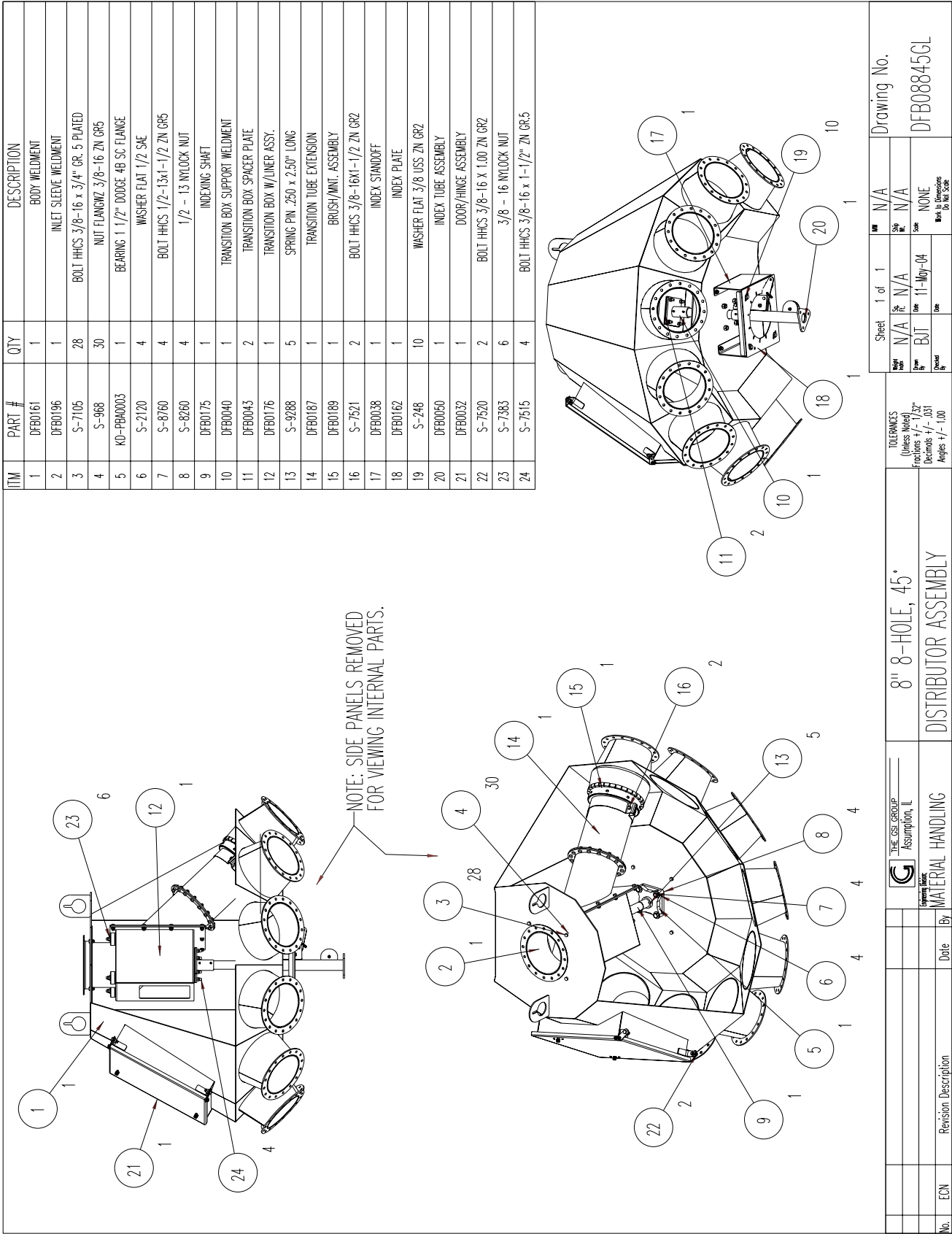
PAGE #	PART #	DESCRIPTION
12.	DFB08645GL	- 8" 6 Hole, 45° Distributor Assembly
13.	DFB08845GL	- 8" 8 Hole, 45° Distributor Assembly
14.	DFB081045GL	- 8" 10 Hole, 45° Distributor Assembly
15.	DFB10645GL	- 10" 6 Hole, 45° Distributor Assembly - Drawing A
16.	DFB10645GL	- 10" 6 Hole, 45° Distributor Assembly - Drawing B
17.	DFB10845GL	- 10" 8 Hole, 45° Distributor Assembly
18.	DFB101045GL	- 10" 10 Hole, 45° Distributor Assembly
19.	DFB12445GL	- 12" 4 Hole, 45° Distributor Assembly
20.	DFB12645GL	- 12" 6 Hole, 45° Distributor Assembly
21.	DFB12845GL	- 12" 8 Hole, 45° Distributor Assembly
22.	DFB121045GL	- 12" 10 Hole, 45° Distributor Assembly
23.	DFB14445GL	- 14" 4 Hole, 45° Distributor Assembly
24.	DFB14645GL	- 14" 6 Hole, 45° Distributor Assembly
25.	DFB14845GL	- 14" 8 Hole, 45° Distributor Assembly

DFB08645GL

8" Six Hole, 45° Distributor Assembly



DFB08845GL
8" Eight Hole, 45° Distributor Assembly



DFB081045GL

8" Ten Hole, 45° Distributor Assembly

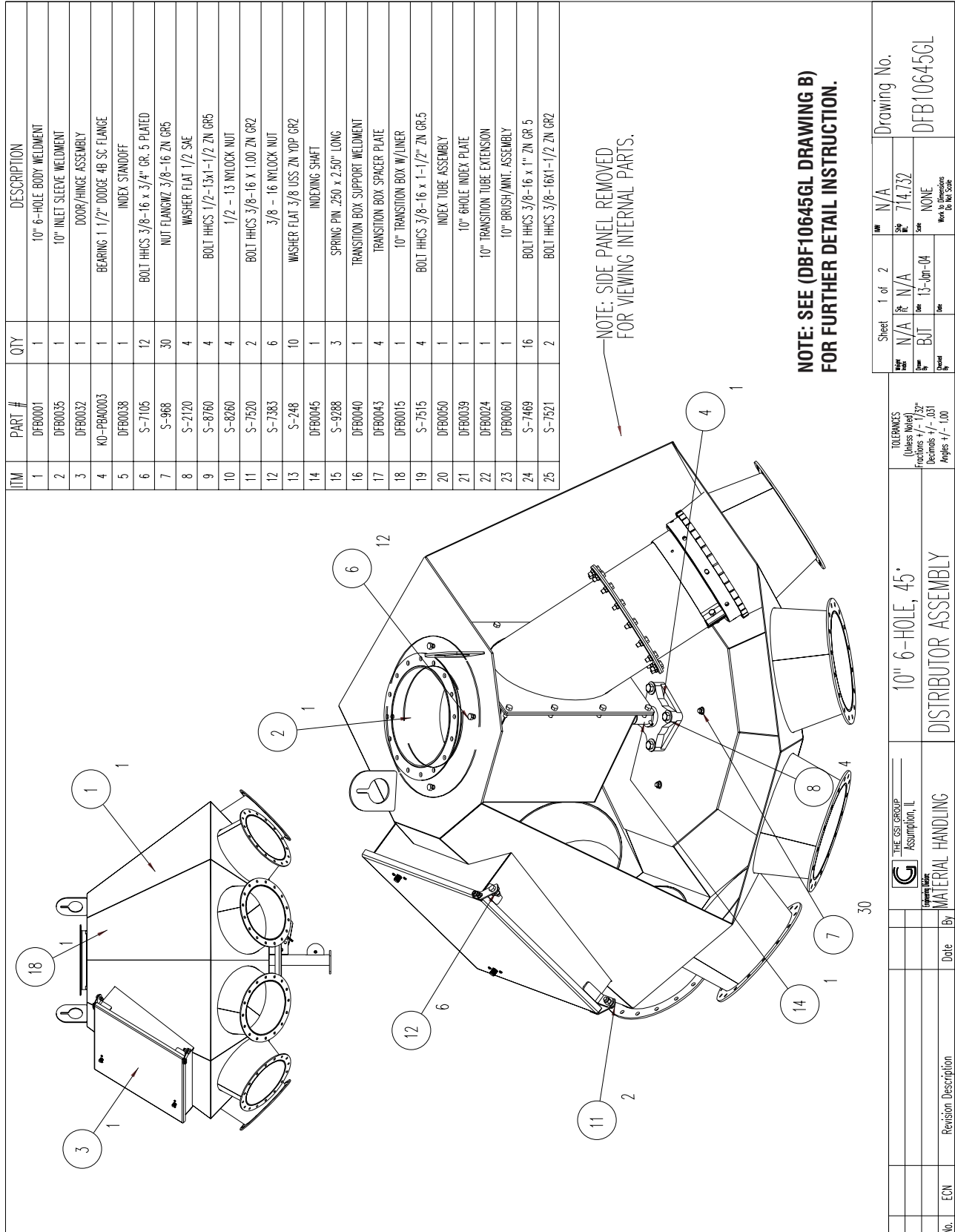
ITEM	PART #	QTY	DESCRIPTION
1	DFB0213	1	BODY WELDMENT
2	DFB0196	1	INLET SLEEVE WELDMENT
3	S-7105	28	BOLT HHCS 3/8-16 x 3/4" GR. 5 PLATED
4	S-968	26	NUT FLANGWZ 3/8-16 ZN GR5
5	KD-PBA0003	1	BEARING 1 1/2" DODGE 4B SC FLANGE
6	S-2120	4	WASHER FLAT 1/2 SAE
7	S-8760	4	BOLT HHCS 1/2-13x1-1/2 ZN GR5
8	S-8260	4	1/2 - 13 NYLOCK NUT
9	DFB0226	1	INDEXING SHAFT
10	DFB0040	1	TRANSITION BOX SUPPORT WELDMENT
11	DFB0043	2	TRANSITION BOX SPACER PLATE
12	DFB0176	1	TRANSITION BOX W/LINER ASSY.
13	S-9288	5	SPRING PIN .250 x 2.50" LONG
14	DFB0227	1	TRANSITION TUBE EXTENSION
15	DFB0189	1	BRUSH/MNT. ASSEMBLY
16	S-7521	2	BOLT HHCS 3/8-16x1-1/2 ZN GR2
17	DFB0038	1	INDEX STANDOFF
18	DFB0082	1	10" 10-HOLE INDEX PLATE
19	S-248	6	WASHER FLAT 3/8 USS ZN GR2
20	DFB0050	1	INDEX TUBE ASSEMBLY
21	DFB0032	1	DOOR/HINGE ASSEMBLY
22	S-7520	2	BOLT HHCS 3/8-16 x 1.00 ZN GR2
23	S-7383	6	3/8 - 16 NYLOCK NUT
24	S-7515	4	BOLT HHCS 3/8-16 x 1-1/2" ZN GR.5

NOTE: SIDE PANELS REMOVED FOR VIEWING INTERNAL PARTS.

TOLERANCES (Unless Noted) Fractions +/- 1/32 Decimals +/- .001 Angles +/- 1.00		Sheet 1 of 1		Drawing No. DFB081045GL	
THE GSE GROUP Assumption, IL	8" 10-HOLE, 45° DISTRIBUTOR ASSEMBLY	Rev	QTY	DATE	BY
MATERIAL HANDLING		N/A	N/A	24-May-04	NONE
ECN	Revision Description	By	Date	Back to Revision Do Not Scale	

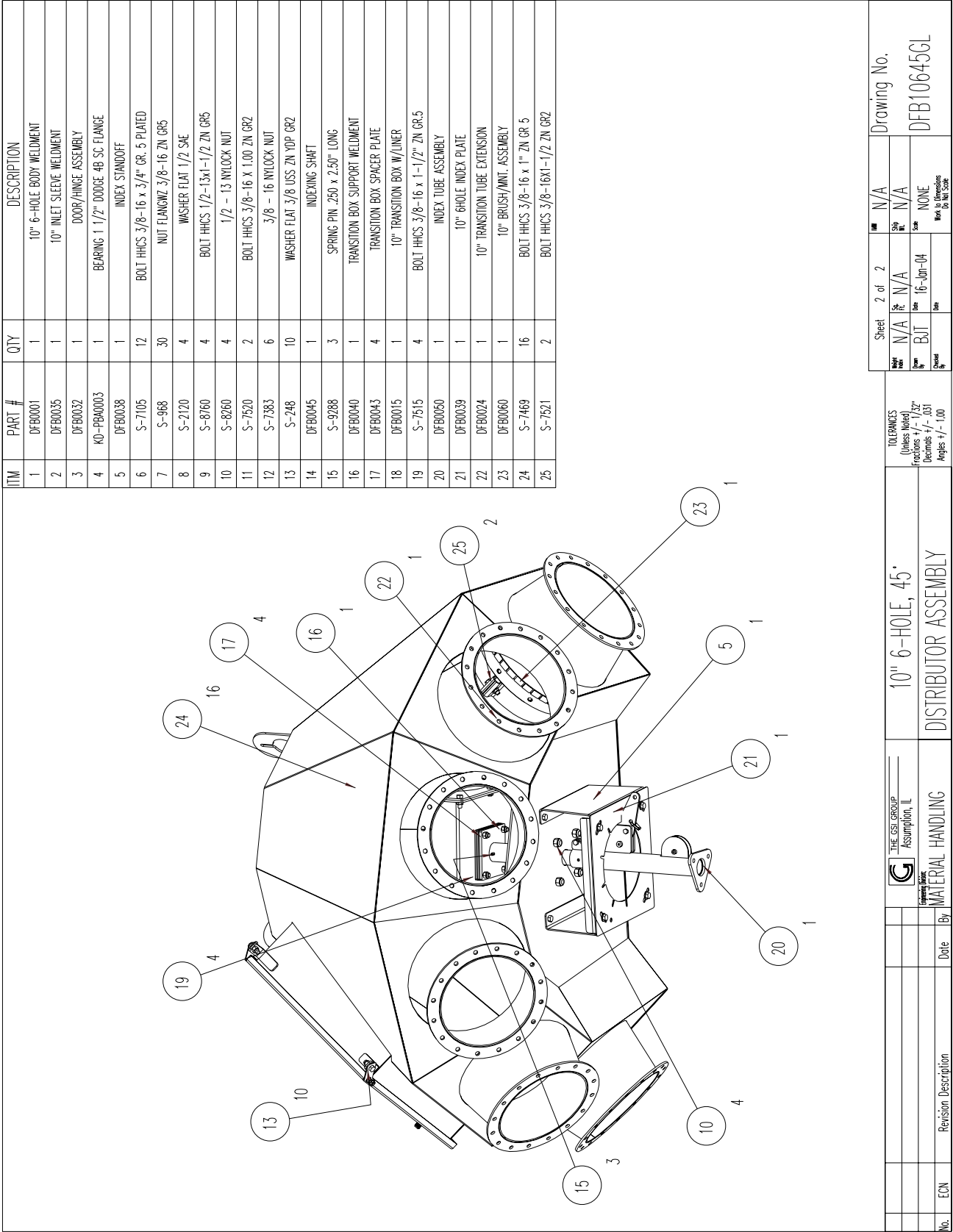
DFB10645GL

10" Six Hole, 45° Distributor Assembly - Drawing A



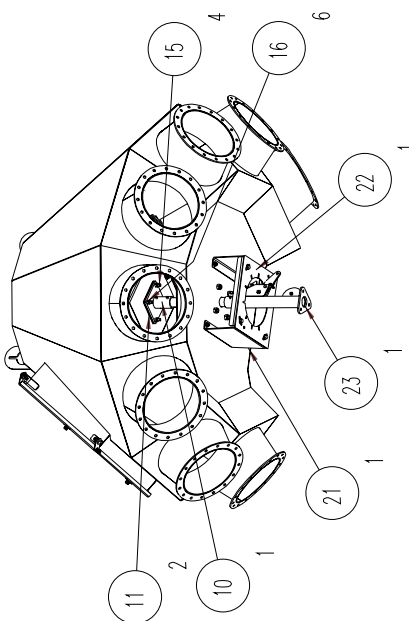
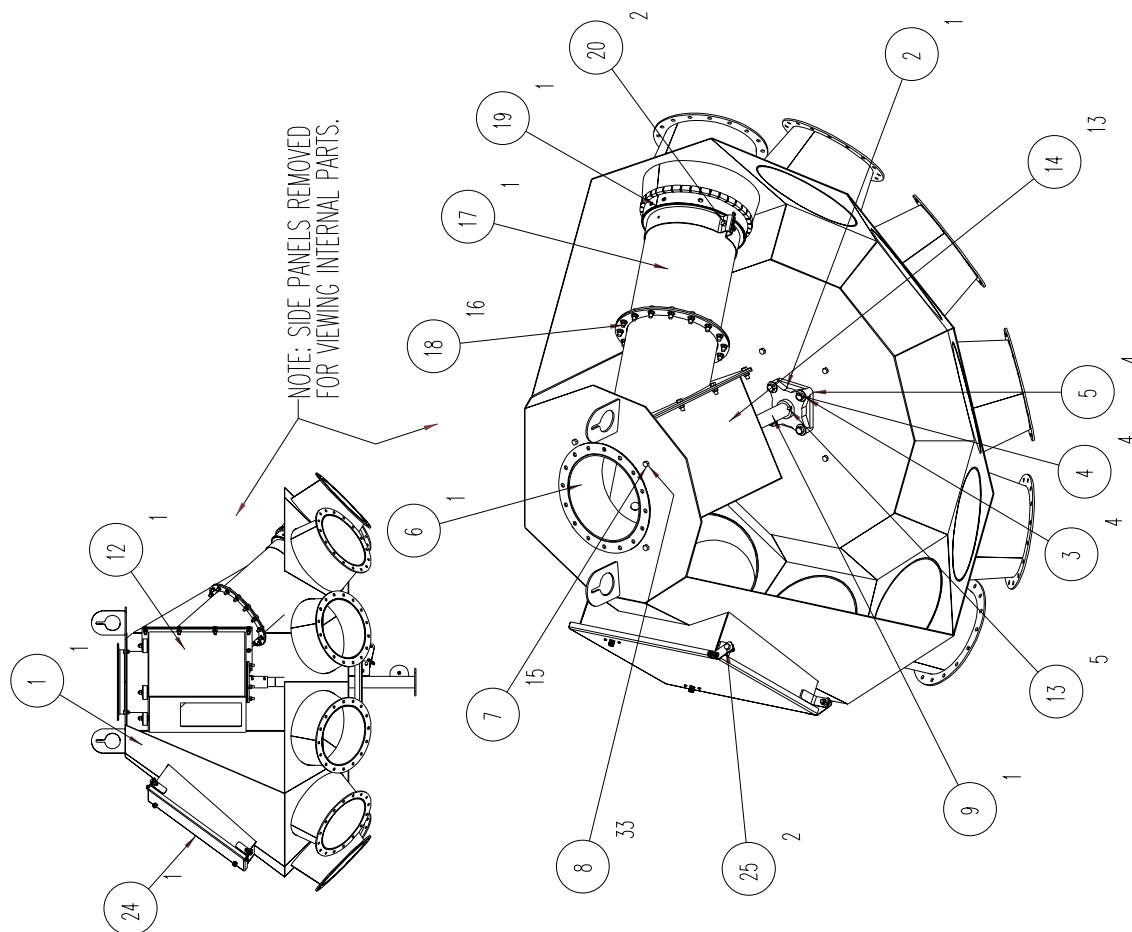
DFB10645GL

10" Six Hole, 45° Distributor Assembly - Drawing B



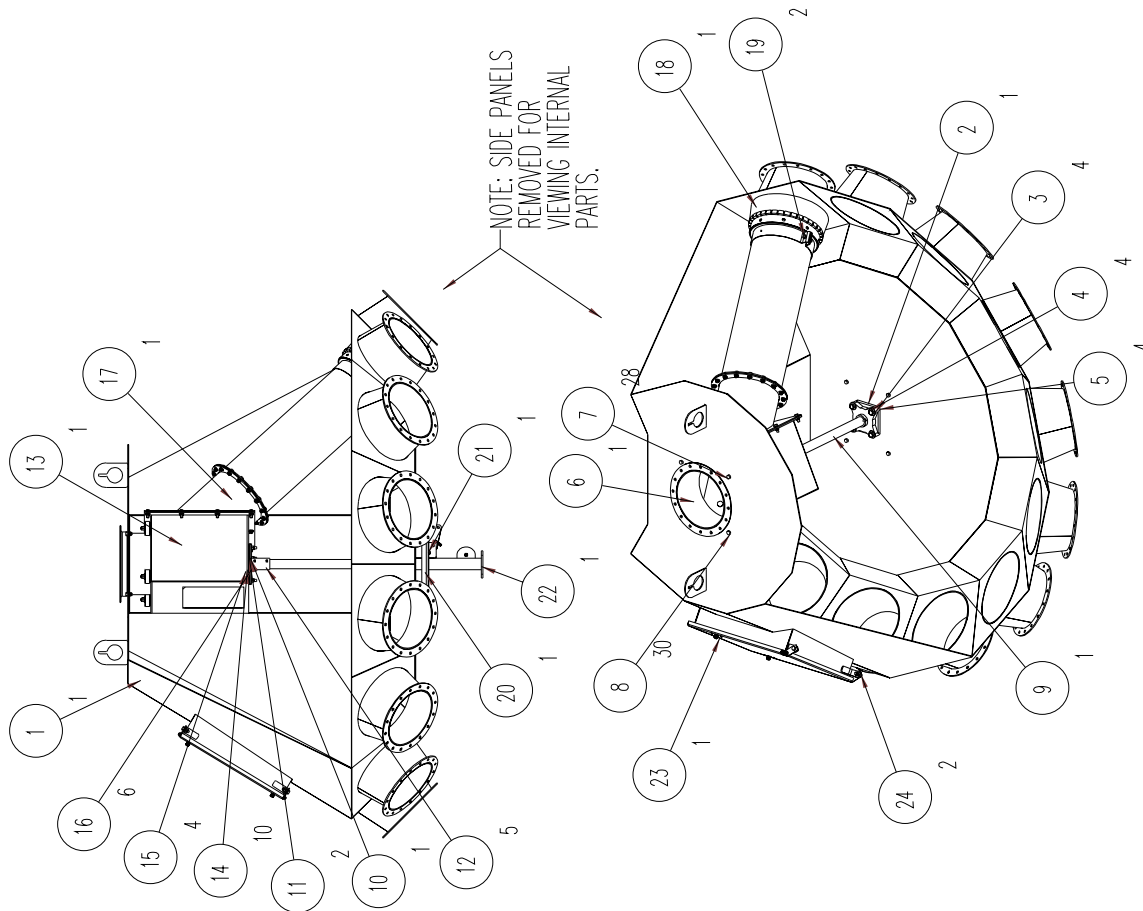
10" Eight Hole, 45° Distributor Assembly

TM	PART #	QTY	DESCRIPTION
1	DFB0063	1	BODY WELDMENT
2	KD-PBA0003	1	BEARING 1 1/2" DODGE 4B 3C FLANGE
3	S-2120	4	WASHER FLAT 1/2 SAE
4	S-8760	4	BOLT HHCS 1/2-13x1-1/2 ZN GR5
5	S-8260	4	1/2 - 13 NYLOCK NUT
6	DFB0035	1	10" INLET SLEEVE WELDMENT
7	S-7105	15	BOLT HHCS 3/8-16 x 3/4" GR. 5 PLATED
8	S-968	33	NUT FLANGW/ 3/8-16 ZN GR5
9	DFB0142	1	INDEXING SHAFT
10	DFB0040	1	TRANSITION BOX SPACER WELDMENT
11	DFB0043	2	TRANSITION BOX SPACER PLATE
12	DFB0015	1	10" TRANSITION BOX W/LINER
13	S-9288	5	SPRING PIN .250 x 2.50" LONG
14	S-248	13	WASHER FLAT 3/8 USS ZN YDP GR2
15	S-7515	4	BOLT HHCS 3/8-16 x 1-1/2" ZN GR.5
16	S-7383	6	3/8 - 16 NYLOCK NUT
17	DFB0079	1	TRANSITION TUBE EXTENSION
18	S-7469	16	BOLT HHCS 3/8-16 x 1" ZN GR 5
19	DFB0060	1	10" BRUSH/MNT. ASSEMBLY
20	S-7621	2	BOLT HHCS 3/8-16x1-1/2 ZN GR2
21	DFB0038	1	INDEX STANDOFF
22	DFB0064	1	INDEX PLATE
23	DFB0050	1	INDEX TUBE ASSEMBLY
24	DFB0032	1	DOOR/HINGE ASSEMBLY
25	S-7520	2	BOLT HHCS 3/8-16 x 1.00 ZN GR2

[illegible]

10" Ten Hole, 45° Distributor Assembly

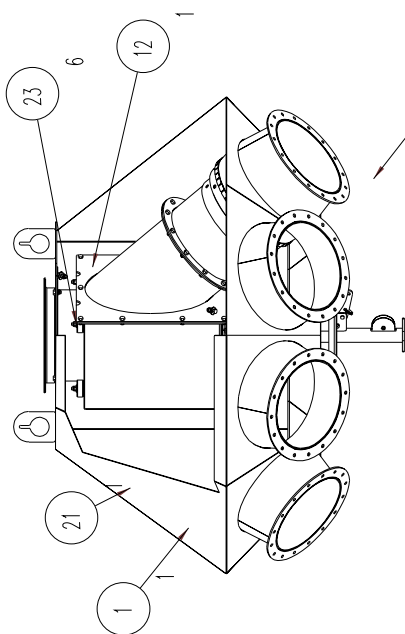
ITEM	PART #	QTY	DESCRIPTION
1	DFB0143	1	BOY WELDMENT
2	KD-PBA0003	1	BEARING 1 1/2" DODGE 4B SC FLANGE
3	S-2120	4	WASHER FLAT 1/2" SAE
4	S-8760	4	BOLT HHCS 1/2"-13x1-1/2 ZN GR5
5	S-8260	4	1/2" - 13 NYLOCK NUT
6	DFB0035	1	10" INLET SLEEVE WELDMENT
7	S-7105	28	BOLT HHCS 3/8"-16 x 3/4" GR. 5 PLATED
8	S-968	30	NUT FLANGWZ 3/8"-16 ZN GR5
9	DFB0144	1	INDEXING SHAFT
10	DFB0040	1	TRANSITION BOX SUPPORT WELDMENT
11	DFB0043	2	TRANSITION BOX SPACER PLATE
12	S-9288	5	SPRING PIN .250 x 2.50" LONG
13	DFB0015	1	10" TRANSITION BOX W/LINER
14	S-248	10	WASHER FLAT 3/8" USS ZN GR2
15	S-7515	4	BOLT HHCS 3/8"-16 x 1-1/2" ZN GR.5
16	S-7383	6	3/8" - 16 NYLOCK NUT
17	DFB0093	1	TRANSITION TUBE EXTENSION
18	DFB0060	1	10" BRUSH/ANTI. ASSEMBLY
19	S-7521	2	BOLT HHCS 3/8"-16x1-1/2 ZN GR2
20	DFB0038	1	INDEX STANDOFF
21	DFB0062	1	10" 10-HOLE INDEX PLATE
22	DFB0050	1	INDEX TUBE ASSEMBLY
23	DFB0032	1	DOOR/HINGE ASSEMBLY
24	S-7520	2	BOLT HHCS 3/8"-16 x 1.00 ZN GR2



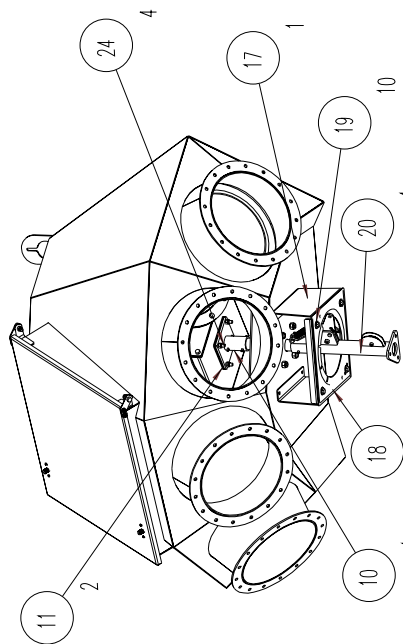
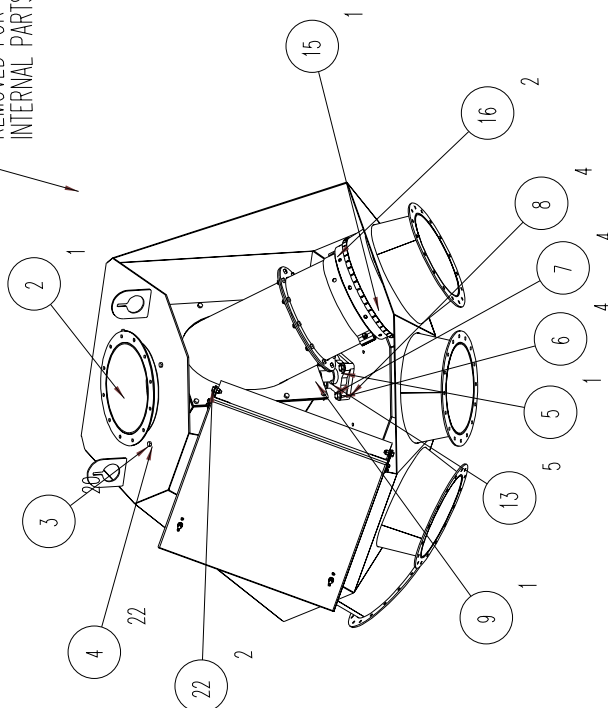
4	 THE GCS GROUP Assumption, IL		10" 10-HOLE, 45° DISTRIBUTOR ASSEMBLY		TOLERANCES (Unless Noted) Fractions ± 1/32" Decimals ± .031 Angles ± .001	Sheet 1 of 1 N/A N/A BUT 05-Mar-04 NONE Work to Dimensions Do Not Scale	Drawing No. DFB101045CL
Rev.	ECN	Revision Description	Date	By			

12" Four Hole, 45° Distributor Assembly

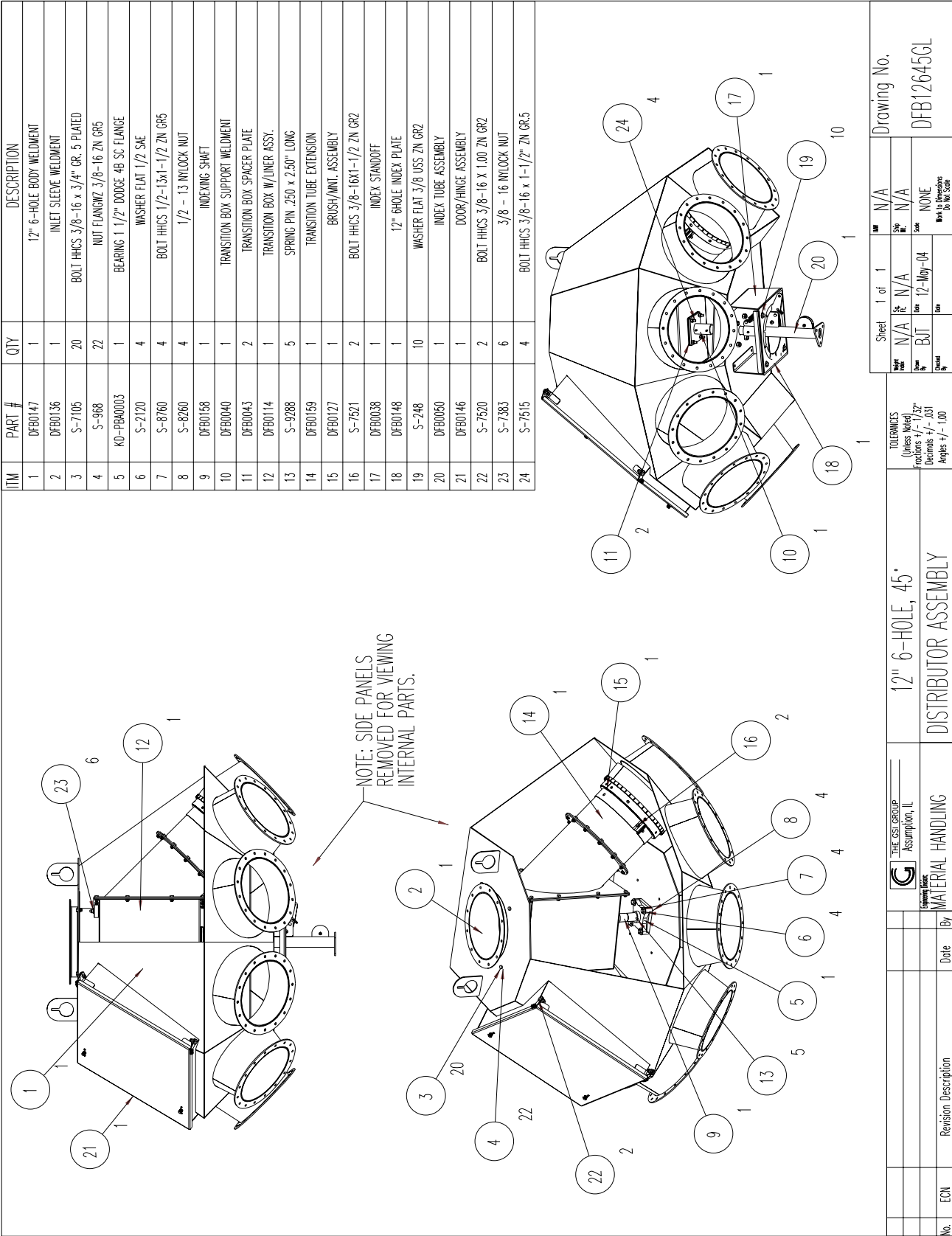
TW	PART #	QTY	DESCRIPTION
1	DFB0230	1	12" 4-HOLE BODY WELDMENT
2	DFB0136	1	INLET SLEEVE WELDMENT
3	S-7105	20	BOLT HHCS 3/8"-16 x 3/4" GR. 5 PLATED
4	S-968	22	NUT FLANGWT 3/8"-16 ZN GR5
5	KD-PB00003	1	BEARING 1 1/2" DODGE 4B SC FLANGE
6	S-2120	4	WASHER FLAT 1/2 SAE
7	S-8760	4	BOLT HHCS 1/2-13x1-1/2 ZN GR5
8	S-8260	4	1/2 - 13 NYLOCK NUT
9	DFB0158	1	INDEXING SHAFT
10	DFB0040	1	TRANSITION BOX SUPPORT WELDMENT
11	DFB0043	2	TRANSITION BOX SPACER PLATE
12	DFB0114	1	TRANSITION BOX W/LINER ASSY.
13	S-9288	5	SPRING PIN .250 x 2.50" LONG
14	DFB0159	1	TRANSITION TUBE EXTENSION
15	DFB0127	1	BRUSH/MNT. ASSEMBLY
16	S-7521	2	BOLT HHCS 3/8"-16x1-1/2 ZN GR2
17	DFB0038	1	INDEX STANDOFF
18	DFB0231	1	12" 4-HOLE INDEX PLATE
19	S-248	10	WASHER FLAT 3/8 USS ZN GR2
20	DFB0050	1	INDEX TUBE ASSEMBLY
21	DFB0146	1	DOOR/HINGE ASSEMBLY
22	S-7520	2	BOLT HHCS 3/8"-16 x 1.00 ZN GR2
23	S-7383	6	3/8 - 16 NYLOCK NUT
24	S-7515	4	BOLT HHCS 3/8"-16 x 1-1/2" ZN GR5



NOTE: SIDE PANELS
REMOVED FOR VIEWING
INTERNAL PARTS.

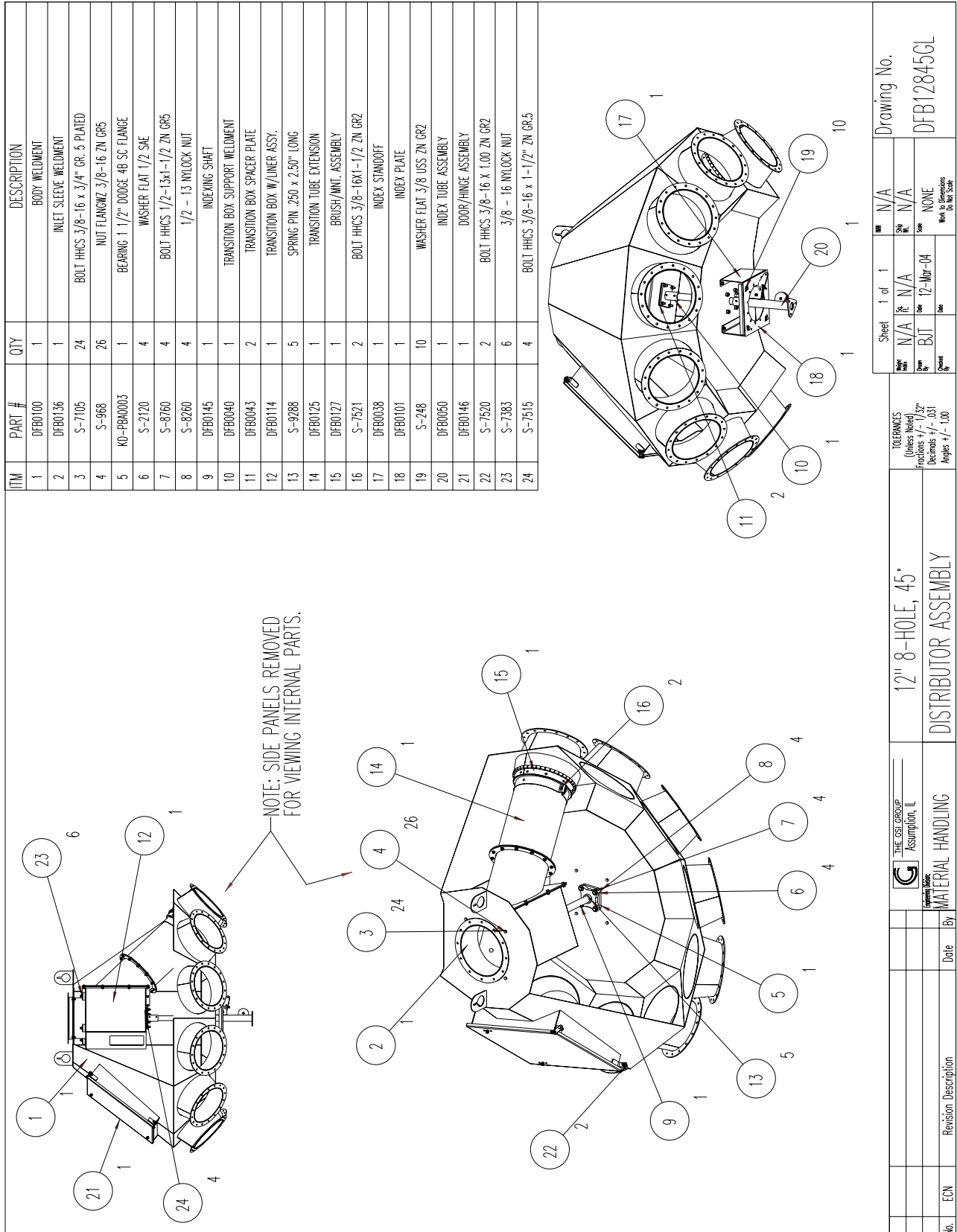
[illegible]

DFB12645GL
12" Six Hole, 45° Distributor Assembly



DFB12845GL

12" Eight Hole, 45° Distributor Assembly



DFB121045GL

12" 10 Hole, 45° Distributor Assembly

ITEM	PART #	QTY	DESCRIPTION
1	DFB0331	1	BODY WELDMENT
2	KD-PBA0003	1	BEARING 1 1/2" DODGE 4B SC FLANGE
3	S-2120	4	WASHER FLAT 1/2 SAE
4	S-8760	4	BOLT HHCS 1/2-13x1-1/2 ZN GR5
5	S-8260	4	1/2 - 13 NYLOCK NUT
6	S-7105	24	BOLT HHCS 3/8-16 x 3/4" GR. 5 PLATED
7	DFB0344	1	INDEXING SHAFT
8	DFB0040	1	TRANSITION BOX SUPPORT WELDMENT
9	DFB0043	2	TRANSITION BOX SPACER PLATE
10	S-9288	5	SPRING PIN .250 x 2.50" LONG
11	DFB0114	1	TRANSITION BOX W/LINER ASSY.
12	S-248	10	WASHER FLAT 3/8 USS ZN GR2
13	S-7515	4	BOLT HHCS 3/8-16 x 1-1/2" ZN GR.5
14	S-7383	6	3/8 - 16 NYLOCK NUT
15	DFB0038	1	INDEX STANDOFF
16	DFB0082	1	10" 10-HOLE INDEX PLATE
17	DFB0050	1	INDEX TUBE ASSEMBLY
18	S-968	26	NUT FLANGWZ 3/8-16 ZN GR5
19	DFB0136	1	INLET SLEEVE WELDMENT
20	DFB0345	1	TRANSITION TUBE EXTENSION
21	DFB0127	1	BRUSH/MNT. ASSEMBLY
22	S-7521	2	BOLT HHCS 3/8-16x1-1/2 ZN GR2
23	DFB0146	1	DOOR/HINGE ASSEMBLY
24	S-7520	2	BOLT HHCS 3/8-16 X 1.00 ZN GR2

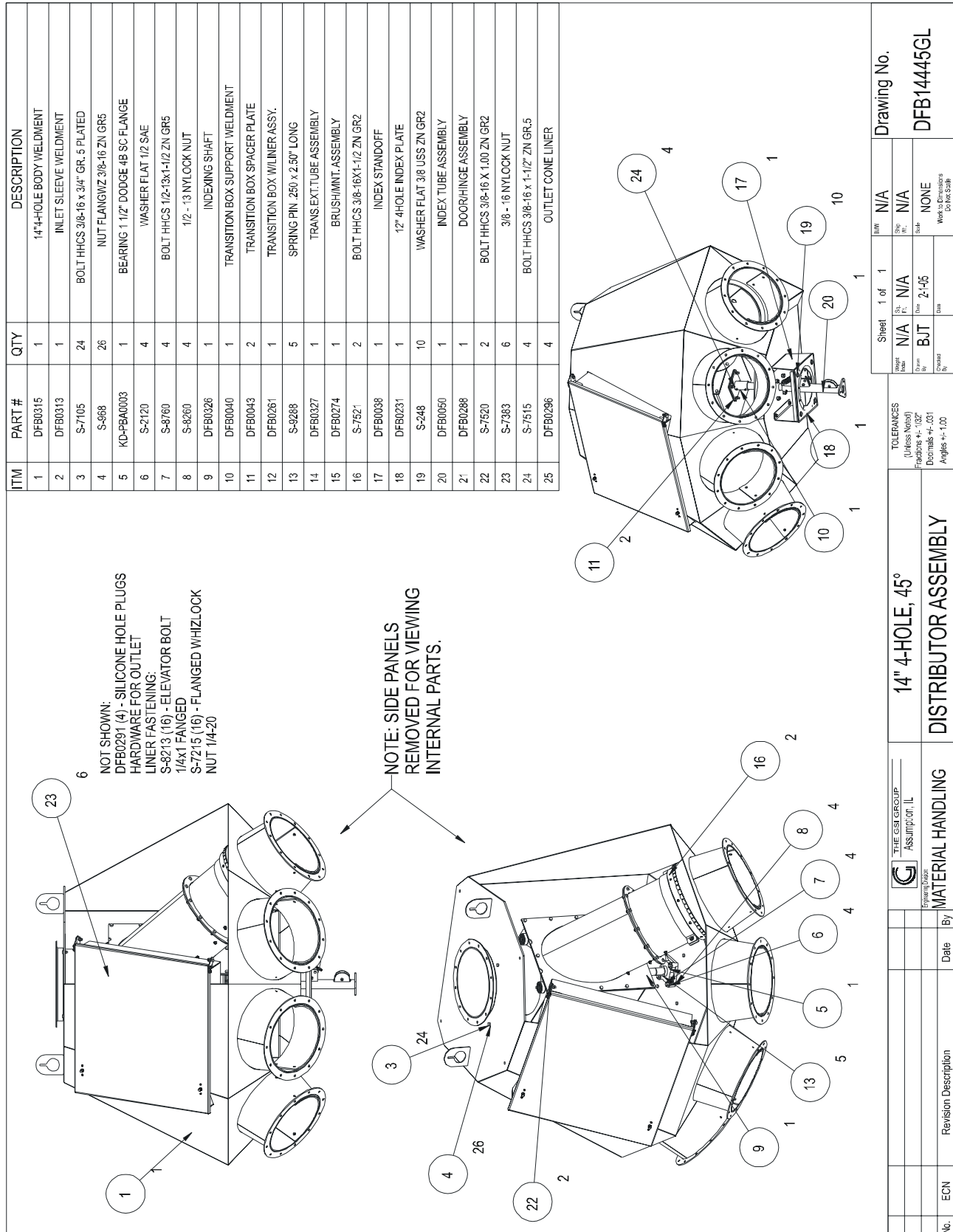
NOTE: SIDE PANELS
REMOVED FOR
VIEWING INTERNAL
PARTS.

Sheet 1 of 1		IN	N/A	Drawing No.
Right	N/A	Ship	N/A	DFB121045GL
By	BJT	Scale	NONE	
Decided	Dec	Work In Progress	Do Not Scale	

TOLERANCES (Unless Noted) Fractions +/- 1/32" Decimals +/- .031 Angles +/- 1.00		12" 10-HOLE, 45°	
THE GRI GROUP Assumption, IL Engineering Division		MATERIAL HANDLING DISTRIBUTOR ASSEMBLY	
No.	ECN	Revision Description	Date

DFB14445GL

14" 4 Hole, 45° Distributor Assembly



DFB14645GL

14" 6 Hole, 45° Distributor Assembly

ITEM	PART #	QTY	DESCRIPTION
1	DFB0298	1	14" 6-HOLE BODY WELDMENT
2	S-2071	4	BOLT HHCS 3/8-16 x 1-1/4" ZN GR5
3	KD-PBA0003	1	BEARING 1 1/2" DODGE 4B SC FLANGE
4	S-2120	4	WASHER FLAT 1/2 SAE
5	S-7811	4	BOLT HHCS 1/2-13x2 ZN
6	S-8260	4	1/2 - 13 NYLOCK NUT
7	DFB0308	1	INDEXING SHAFT
8	DFB0040	1	TRANSITION BOX SUPPORT WELDMENT
9	DFB0043	2	TRANSITION BOX SPACER PLATE
10	DFB0261	1	TRANSITION BOX W/LINER ASSY.
11	S-9288	5	SPRING PIN .250 x 2.50" LONG
12	DFB0312	1	TRANS.EXT.TUBE ASSEMBLY
13	DFB0038	1	INDEX STANDOFF
14	DFB0146	1	12" 6-HOLE INDEX PLATE
15	S-248	10	WASHER FLAT 3/8 USS ZN GR2
16	S-7105	20	BOLT HHCS 3/8-16 x 3/4" GR. 5 PLATED
17	S-968	26	NUT FLANGWZ 3/8-16 ZN GR5
18	DFB0050	1	INDEX TUBE ASSEMBLY
19	S-7515	4	BOLT HHCS 3/8-16 x 1-1/2" ZN GR.5
20	S-7383	6	3/8 - 16 NYLOCK NUT
21	DFB0274	1	BRUSH/MNT. ASSEMBLY
22	DFB0313	1	INLET SLEEVE WELDMENT
23	DFB0288	1	DOOR/HINGE ASSEMBLY
24	S-7520	2	BOLT HHCS 3/8-16 X 1.00 ZN GR2
25	S-7521	2	BOLT HHCS 3/8-16X1-1/2 ZN GR2
26	DFB0296	6	OUTLET CONE LINER

NOT SHOWN:
DFB0291 (4) - SILICONE HOLE PLUGS
HARDWARE FOR OUTLET
LINER FASTENING:
S-8213 (24) - ELEVATOR BOLT
1/4x1 FANGED
S-7215 (24) - FLANGED WHIZLOCK
NUT 1/4-20

NOTE: SIDE PANELS
REMOVED FOR VIEWING
INTERNAL PARTS.

Sheet 1 of 1		IMV	Drawing No.
Height	N/A	Ship	DFB14645GL
Weight	N/A	Inc.	
Part	N/A	Ship	
Dim	1:10	Ship	
Scale	1:10	Ship	
Notes		Ship	
Notes		Ship	

TOLERANCES (Unless Noted)		14" 6-HOLE, 45°
Fractions ±.010"		DISTRIBUTOR ASSEMBLY
Decimals ±.001		
Angles ±1.00		

THE GSI GROUP Assumption, IL		MATERIAL HANDLING	
By		By	
Date		Date	
Revision Description		Revision Description	
No.	ECN	No.	ECN

14" 8 Hole, 45° Distributor Assembly

The diagram shows an exploded view of a distributor assembly. Key components are labeled with callouts:

- Top Section:** Includes the main body weldment (1), inlet sleeve weldment (2), and transition box/wiliner assembly (3).
- Middle Section:** Shows the bearing (5), washer flat (6), bolt HHCS (7), nut flangwz (8), and door/hinge assembly (9).
- Bottom Section:** Features the index tube assembly (10), index plate (11), and outlet cone liner (12).

A note indicates: "NOTE: SIDE PANELS REMOVED FOR VIEWING INTERNAL PARTS." This refers to the side panels shown in the exploded view.

ITEM	PART #	QTY	DESCRIPTION
1	DFB0246	1	BODY WELDMENT
2	DFB0282	1	INLET SLEEVE WELDMENT
3	S-2071	4	BOLT HHCS 3/8-16 x 1-1/4" ZN GR5
4	S-988	26	NUT FLANGWZ 3/8-16 ZN GR5
5	KD-PBA0003	1	BEARING 1 1/2" DODGE 4B SO FLANGE
6	S-2120	4	WASHER FLAT 1/2 SAE
7	S-7811	4	BOLT HHCS 1/2-13x2 ZN
8	S-8260	4	1/2 - 13 NYLOCK NUT
9	DFB0287	1	INDEXING SHAFT
10	DFB0040	1	TRANSITION BOX SUPPORT WELDMENT
11	DFB0043	2	TRANSITION BOX SPACER PLATE
12	DFB0261	1	TRANSITION BOX WILINER ASSY.
13	S-9288	5	SPRING PIN .250 x 2.50" LONG
14	DFB0293	1	TRANS.EXT.TUBE ASSEMBLY
15	DFB0274	1	BRUSH/MNT. ASSEMBLY
16	S-7105	20	BOLT HHCS 3/8-16 x 3/4" GR. 5 PLATED
17	S-7521	2	BOLT HHCS 3/8-16X1-1/2 ZN GR2
18	DFB0038	1	INDEX STANDOFF
19	S-248	10	WASHER FLAT 3/8 USS ZN GR2
20	S-7515	4	BOLT HHCS 3/8-16 x 1-1/2" ZN GR.5
21	S-7383	6	3/8 - 16 NYLOCK NUT
22	DFB0101	1	INDEX PLATE
23	DFB0050	1	INDEX TUBE ASSEMBLY
24	DFB0288	1	DOOR/HINGE ASSEMBLY
25	S-7520	2	BOLT HHCS 3/8-16 X 1.00 ZN GR2
26	DFB0296	8	OUTLET CONE LINER

ECN

Revision Description

Date

By

THE GSI GROUP[®]

Assumption, IL

TOLERANCES
(Unless Noted)
FRACTIONS ±.002
DECIMALS ±.001
ANGLES ±.001

14" 8-HOLE; 45°

DISTRIBUTOR ASSEMBLY

Sheet 1 of 1

N/A

N/A

N/A

DATE

10-Aug-04

BY

JUT

CHECKED

DATE

10-Aug-04

Drawing No.

DFB14845GL

NOTES

The GSI Group, Inc. Warranty

THE GSI GROUP, INC. ("GSI") WARRANTS ALL PRODUCTS WHICH IT MANUFACTURES TO BE FREE OF DEFECTS IN MATERIAL AND WORKMANSHIP UNDER NORMAL USAGE AND CONDITIONS FOR A PERIOD OF 12 MONTHS AFTER RETAIL SALE TO THE ORIGINAL END USER. THE PURCHASER'S SOLE REMEDY AND GSI'S ONLY OBLIGATION SHALL BE TO REPAIR OR REPLACE, AT GSI'S OPTION AND EXPENSE, PRODUCTS THAT, IN GSI'S SOLE JUDGMENT, CONTAIN A MATERIAL DEFECT DUE TO MATERIALS OR WORKMANSHIP. ALL DELIVERY AND SHIPMENT CHARGES TO AND FROM GSI'S FACTORY WILL BE PURCHASER'S RESPONSIBILITY. EXPENSES INCURRED BY OR ON BEHALF OF THE PURCHASER WITHOUT PRIOR WRITTEN AUTHORIZATION FROM AN AUTHORIZED EMPLOYEE OF GSI SHALL BE THE SOLE RESPONSIBILITY OF THE PURCHASER.

EXCEPT FOR THE LIMITED WARRANTY EXPRESSED ABOVE, GSI MAKES NO FURTHER WARRANTY OF ANY KIND, EXPRESS OR IMPLIED, INCLUDING, WITHOUT LIMITATION, WARRANTIES OF MERCHANTABILITY OR FITNESS FOR A PARTICULAR PURPOSE OR USE IN CONNECTION WITH (I) PRODUCT MANUFACTURED OR SOLD BY GSI OR (ii) ANY ADVICE, INSTRUCTION, RECOMMENDATION OR SUGGESTION PROVIDED BY AN AGENT, REPRESENTATIVE OR EMPLOYEE OF GSI REGARDING OR RELATED TO THE CONFIGURATION, INSTALLATION, LAYOUT, SUITABILITY FOR A PARTICULAR PURPOSE, OR DESIGN OF SUCH PRODUCTS.

GSI SHALL NOT BE LIABLE FOR ANY DIRECT, INDIRECT, INCIDENTAL OR CONSEQUENTIAL DAMAGES, INCLUDING, WITHOUT LIMITATION, LOSS OF ANTICIPATED PROFITS OR BENEFITS. PURCHASER'S SOLE AND EXCLUSIVE REMEDY IS AS SET FORTH IN THE LIMITED WARRANTY EXPRESSED ABOVE, WHICH SHALL NOT EXCEED THE AMOUNT PAID FOR THE PRODUCT PURCHASED. THIS WARRANTY IS NOT TRANSFERABLE AND APPLIES ONLY TO THE ORIGINAL PURCHASER. GSI SHALL HAVE NO OBLIGATION OR RESPONSIBILITY FOR ANY REPRESENTATIONS OR WARRANTIES MADE BY OR ON BEHALF OF ANY DEALER, AGENT OR DISTRIBUTOR OF GSI.

GSI ASSUMES NO RESPONSIBILITY FOR CLAIMS RESULTING FROM ERECTION DEFECTS OR UNAUTHORIZED MODIFICATIONS TO PRODUCTS WHICH IT MANUFACTURED. MODIFICATIONS TO PRODUCTS NOT SPECIFICALLY DELINEATED IN THE MANUAL ACCOMPANYING THE EQUIPMENT AT INITIAL SALE WILL NULLIFY THE PRODUCT WARRANTY THAT MIGHT HAVE BEEN OTHERWISE AVAILABLE.

THE FOREGOING WARRANTY SHALL NOT EXTEND TO PRODUCTS OR PARTS WHICH HAVE BEEN DAMAGED BY NEGLIGENT USE, MISUSE, ALTERATION OR ACCIDENT. THIS WARRANTY EXTENDS SOLELY TO ONLY PRODUCTS MANUFACTURED BY GSI. THIS WARRANTY IS EXCLUSIVE AND IN LIEU OF ALL OTHER WARRANTIES EXPRESS OR IMPLIED. GSI RESERVES THE RIGHT TO MAKE DESIGN OR SPECIFICATION CHANGES AT ANY TIME.

PRIOR TO INSTALLATION, PURCHASER HAS THE RESPONSIBILITY TO COMPLY WITH ALL FEDERAL, STATE AND LOCAL CODES WHICH MAY APPLY TO THE LOCATION AND INSTALLATION OF PRODUCTS MANUFACTURED OR SOLD BY GSI.

THE GSI GROUP



1004 E. Illinois St., Box 20
Assumption, IL 62510-0020
Ph: 217-226-4421