

Farm/Commercial Distributor

Instruction Manual

PNEG-1385

Date: **12-21-20**



All information, illustrations, photos, and specifications in this manual are based on the latest information available at the time of publication. The right is reserved to make changes at any time without notice.

Contents

| | |
|--|-----------|
| Chapter 1 Introduction | 4 |
| Chapter 2 Safety | 5 |
| Cautionary Symbols Definitions | 5 |
| Safety Instructions | 6 |
| Chapter 3 Installation Notes | 8 |
| Chapter 4 Maintenance | 12 |
| Greasing the Bearing | 12 |
| Replacing the Wear Liner | 13 |
| Replacing the Brush Mount Assembly | 14 |
| Chapter 5 Parts List | 15 |
| 6" 4 Hole, 45° Distributor Assembly (DFB06445G) | 16 |
| 6" 6 Hole, 45° Distributor Assembly (DFB06645G) | 18 |
| 6" 8 Hole, 45° Distributor Assembly (DFB06845G) | 20 |
| 8" 6 Hole, 45° Distributor Assembly (DFB08645G) | 22 |
| 8" 8 Hole, 45° Distributor Assembly (DFB08845G) | 24 |
| 8" 10 Hole, 45° Distributor Assembly (DFB081045G) | 26 |
| 10" 6 Hole, 45° Distributor Assembly - Drawing A (DFB10645G) | 28 |
| 10" 6 Hole, 45° Distributor Assembly - Drawing B (DFB10645G) | 30 |
| 10" 8 Hole, 45° Distributor Assembly (DFB10845G) | 32 |
| 10" 10 Hole, 45° Distributor Assembly (DFB101045G) | 34 |
| 12" 4 Hole, 45° Distributor Assembly (DFB12445G) | 36 |
| 12" 6 Hole, 45° Distributor Assembly (DFB12645G) | 38 |
| 12" 8 Hole, 45° Distributor Assembly (DFB12845G) | 40 |
| 12" 10 Hole, 45° Distributor Assembly (DFB121045G) | 42 |
| 14" 4 Hole, 45° Distributor Assembly (DFB14445G) | 44 |
| 14" 6 Hole, 45° Distributor Assembly (DFB14645G) | 46 |
| 14" 8 Hole, 45° Distributor Assembly (DFB14845G) | 48 |
| Chapter 6 Warranty | 51 |

1. Introduction

This manual covers general information on the distributor installation. Due to the wide variety of field conditions we cannot cover every aspect of installation. We offer one method for installing equipment but, rely on the qualified contractor's experience and techniques. Some conditions and surroundings do not allow certain practices during the installation of equipment. We can not be responsible for the installation of the distributor and accessories. We encourage anyone installing, or maintaining this equipment to thoroughly read this manual before proceeding.

The company is the vendor of the distributor and certain of its optional accessories only, and does not assume responsibility for the installation. The installation recommendations contained within this manual are for consideration only.

The distributor has not been designed to support the weight of other equipment such as cleaners, valves, other distributors, spouting, etc. Separate supporting structures must be provided for any accessory equipment.

READ THIS MANUAL carefully to learn how to properly use and install equipment. Failure to do so could result in personal injury or equipment damage.

INSPECT the shipment immediately upon arrival. The customer is responsible for ensuring that all quantities are correct. The customer should report and note any damage or shortage on the bill of lading to justify their claim to the transport company.

THIS MANUAL SHOULD BE CONSIDERED a permanent part of your equipment and should be easily accessible when needed.

A **WARRANTY** is provided as part of the company's support program for customers who use and maintain their equipment as described in the manual. The warranty is explained on the warranty page located on the inside back cover of this manual.

This warranty provides you the assurance that the company will back its products when defects appear within the warranty period. In some circumstances, the company also provides field improvements, often without charge to the customer, even if the product is out of warranty. Should the equipment be abused, or modified to change its performance beyond the factory specifications, the warranty will become void and field improvements may be denied.

Cautionary Symbols Definitions

Cautionary symbols appear in this manual and on product decals. The symbols alert the user of potential safety hazards, prohibited activities and mandatory actions. To help you recognize this information, we use the symbols that are defined below.



This symbol indicates an imminently hazardous situation which, if not avoided, **will result in serious injury or death.**



This symbol indicates a potentially hazardous situation which, if not avoided, **may result in serious injury or death.**



This symbol indicates a potentially hazardous situation which, if not avoided, **may result in minor or moderate injury.**



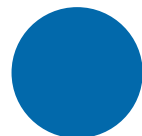
This symbol is used to address practices not related to personal injury.



This symbol indicates a general hazard.



This symbol indicates a prohibited activity.



This symbol indicates a mandatory action.

2. Safety

Safety Instructions

As owner and/or operator, it is your responsibility to know what requirements, hazards, and precautions exist, and to inform all personnel associated with the equipment or in the area. Safety precautions may be required from the personnel. Avoid any alterations to the equipment. Such alterations may produce a very dangerous situation where **SERIOUS INJURY** or **DEATH** may occur.

This equipment shall be installed in accordance with the current installation codes and applicable regulations, which should be carefully followed in all cases. Authorities having jurisdiction should be consulted before installations are made.

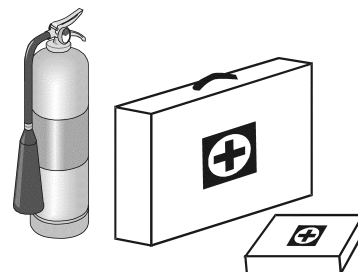
Follow Safety Instructions

- Carefully read and follow all safety messages in this manual and safety signs on your machine. Keep signs in good condition. Replace missing or damaged safety signs. Replacement safety signs are available from the manufacturer.
- Learn how to operate the machine correctly. Do not operate without instruction.
- If you do not understand any part of this manual or need assistance, contact your dealer.



Prepare for Emergencies

- Be prepared if fire starts.
- Keep a first aid kit and fire extinguisher handy.
- Keep emergency numbers for doctors, ambulance service, hospital, and fire department near your telephone.



**Keep Emergency Equipment
Quickly Accessible**

Use Personal Protective Equipment

- Use appropriate personal protective equipment:

Eye Protection



Head Protection



Hearing Protection



Foot Protection



Hand Protection



Fall Protection



Respiratory Protection



- Wear clothing appropriate to the job.
- Remove all jewelry.
- Tie long hair up and back.

3. Installation Notes

* Sloped transitions are included with the following configurations:

Distributor Offset Transitions for use with GSI Ladder Packages

| Bucket Size | Distributor Diameter | # Spouts | No Offset | 1' Offset | 2' Offset |
|-------------|----------------------|----------|-----------|-----------|-----------|
| 16" | 6 | 4 | X | | |
| | | 6 | | X | |
| | | 8 | | X | |
| | 8 | 6 | | X | |
| | | 8 | | X | |
| | | 10 | | | X |
| | 10 | 6 | | X | |
| | | 8 | | | X |
| | | 10 | | | X |
| 24" | 8 | 6 | X | | |
| | | 8 | X | | |
| | | 10 | | X | |
| | 10 | 6 | X | | |
| | | 8 | | X | |
| | | 10 | | X | |
| | 12 | 4 | X | | |
| | | 6 | X | | |
| | | 8 | | X | |
| 10 | | | | X | |
| 30" | 10 | 6 | X | | |
| | | 8 | X | | |
| | | 10 | | X | |
| | 12 | 4 | X | | |
| | | 6 | X | | |
| | | 8 | X | | |
| | 10 | | X | | |
| | 14 | 4 | X | | |
| | | 6 | X | | |
| 8 | | | X | | |
| 36" | 10 | 6 | X | | |
| | | 8 | X | | |
| | | 10 | X | | |
| | 12 | 4 | X | | |
| | | 6 | X | | |
| | | 8 | X | | |
| | 10 | X | | | |
| | 14 | 4 | X | | |
| | | 6 | X | | |
| 8 | | X | | | |
| 42" | 14 | 4 | X | | |
| | | 6 | X | | |
| | | 8 | X | | |

* The offset transition allows clearance between the bucket elevator and the distributor. The transition also keeps the distributor outlet spouting from interfering with the ladder safety cage. Transitions must be installed for proper distributor operation. (See Figure 3A and Figure 3B on Page 10.)

Transition Numbers

| Offset Transitions | 1' Offset | 2' Offset |
|-------------------------------|--------------|--------------|
| 16" and 24" (AR Construction) | GE1612OT-12 | GE1612OT-24 |
| 16" and 24" (Urethane Lined) | GE1612OT-12L | GE1612OT-24L |
| 30" and 36" (AR Construction) | GE1818OT-12 | GE1818OT-24 |
| 30" and 36" (Urethane Lined) | GE1818OT-12L | GE1818OT-24L |

NOTE: Standard offset transitions are hot-dip galvanized finish. Powder coat finish available upon request.

3. Installation Notes

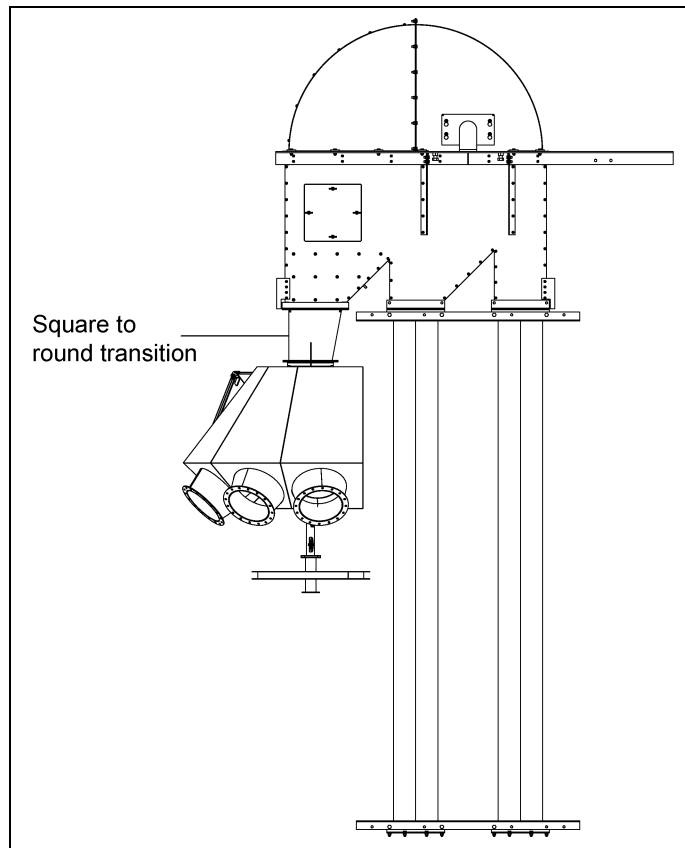


Figure 3A

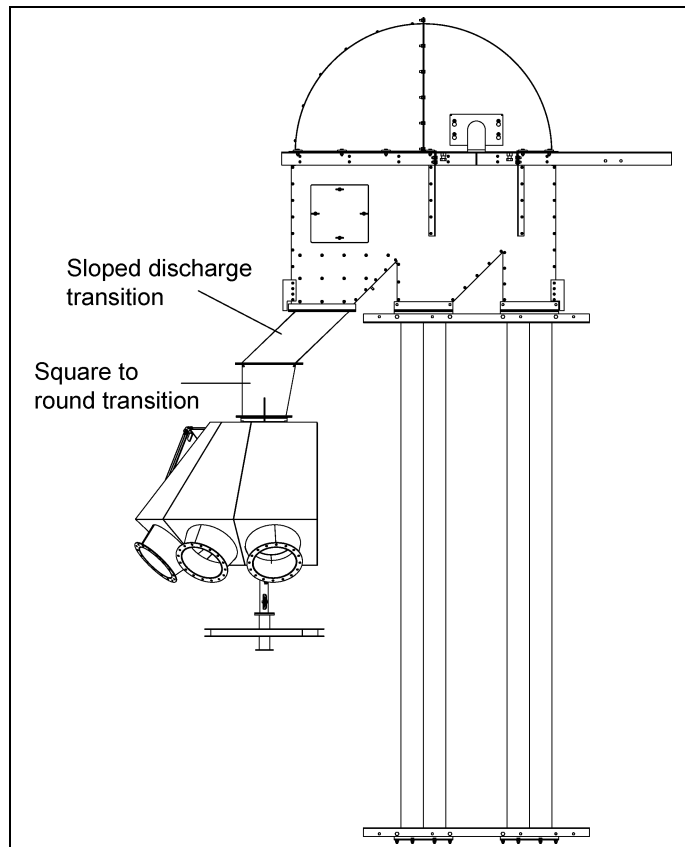


Figure 3B



If you must get inside of distributor, turn OFF and LOCK OUT all power sources. DO NOT operate the distributor while inside.



Crush hazard. Lifting lugs are to be used for placement only. DO NOT use lifting lugs for structural support. (See Figure 3C.)



DO NOT use a clamp band when attaching the down spout to the inlet flange. A bolted connection is required at this point. (See Figure 3C.)

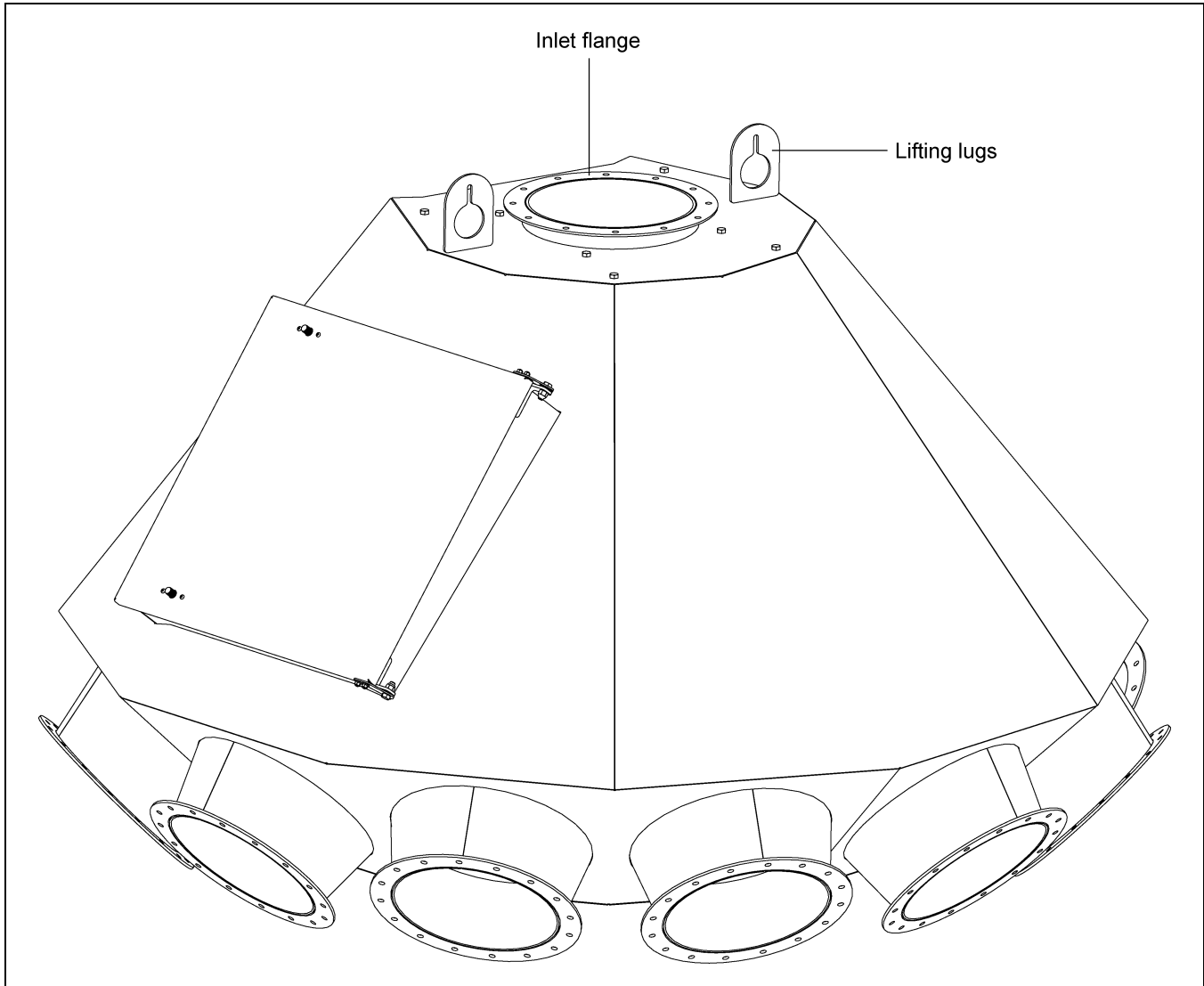


Figure 3C

Greasing the Bearing

The bearing is greased at the factory and is ready for operation. Lubricate annually using a #2 lithium based grease or equivalent. (See Figure 4A.)

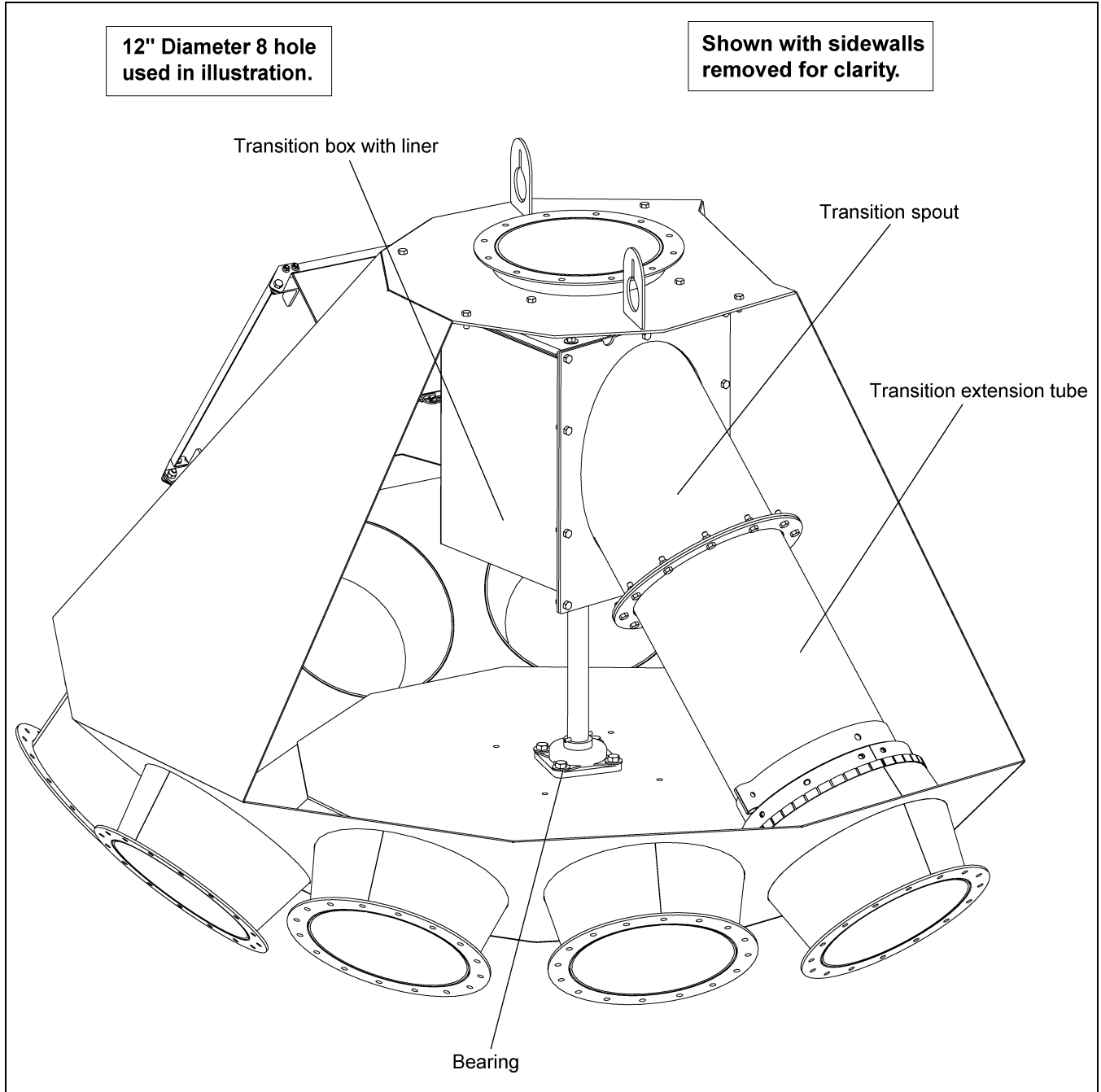


Figure 4A

Replacing the Wear Liner

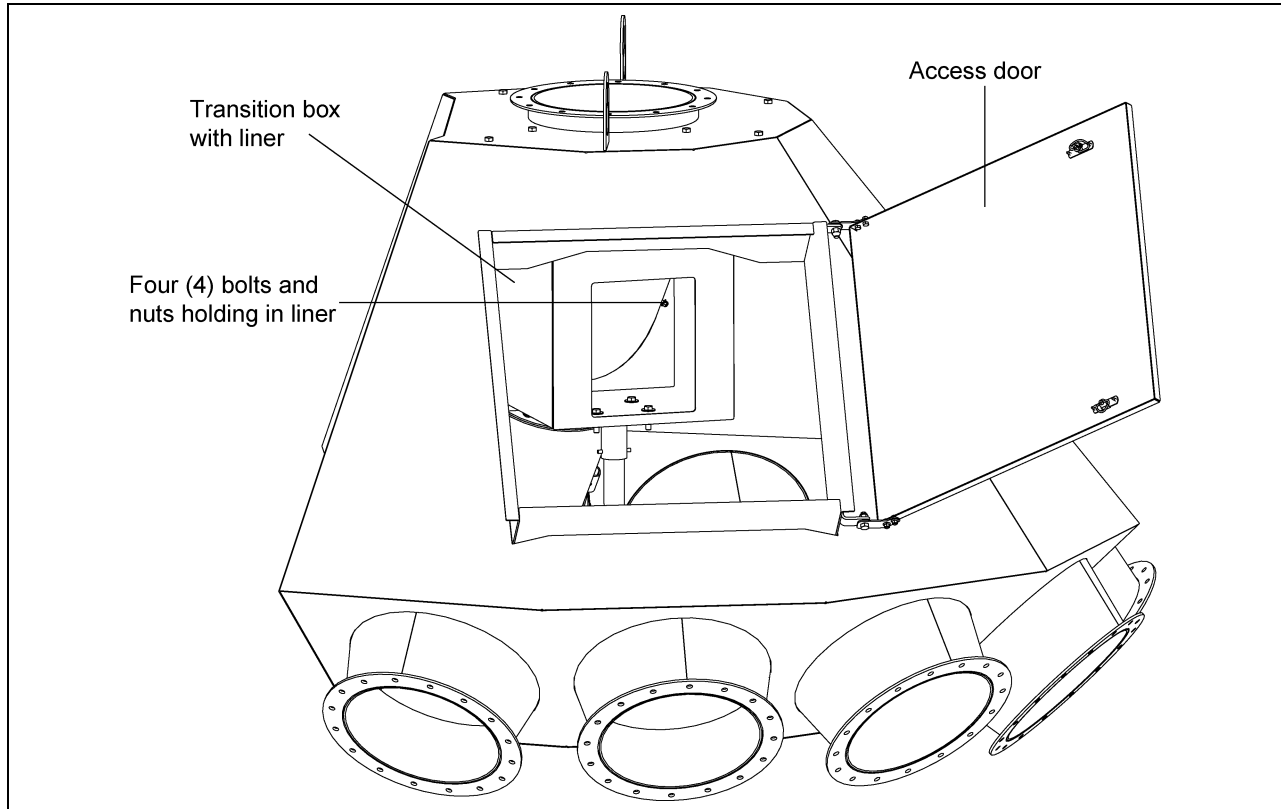


Figure 4B

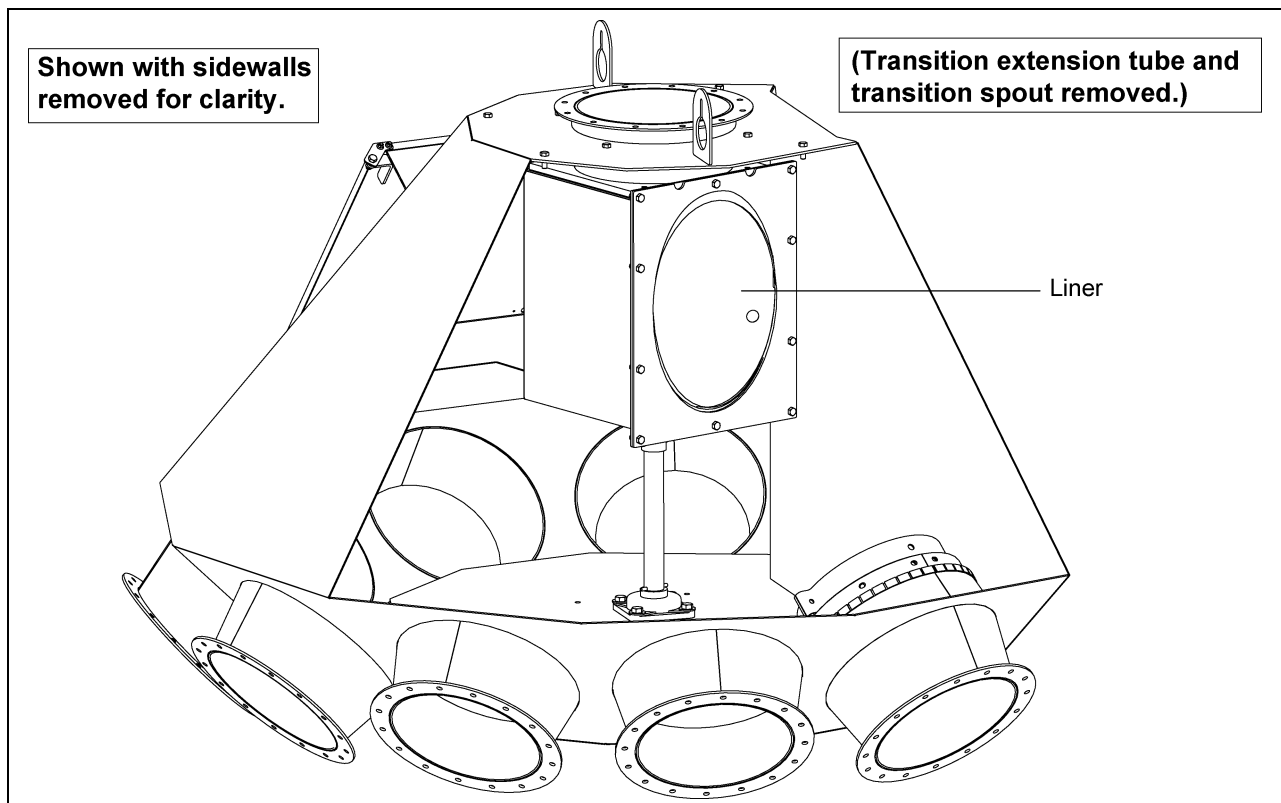


Figure 4C

4. Maintenance

Replacing the Wear Liner (Continued)

Position the spouting near the door. Remove the transition extension tube. (See Figure 4A on Page 12.) Remove the transition spout. (See Figure 4A on Page 12.) Reverse the transition box which will allow access to the hardware holding the liner in. (See Figure 4B on Page 13). Replace the old liner with the new liner. (See Figure 4C on Page 13.) Replace the transition spout and transition extension tube.

Replacement Liner Numbers

6" - DFB0368, 8" - DFB0183, 10" - DFB0051, 12" - DFB0121, 14" - DFB0268

Replacing the Brush Mount Assembly

Position the spouting near the door. Remove the transition extension tube. (See Figure 4D.) Loosen the clamp band and remove old brush assembly from the transition extension tube. Replace the new brush assembly onto transition extension tube and tighten in place using the clamp band. Replace the transition extension tube/brush assembly.

NOTE: Make sure the seam of the brush assembly is facing towards the top as shown in Figure 4D. The brush bristles should be somewhat snug against the spout wall. Operate the spout to all outlets to ensure proper alignment and clearance.

Replacement Brush Assembly Numbers

6" - DFB0374, 8" - DFB0189, 10" - DFB0060, 12" - DFB0127, 14" - DFB0274

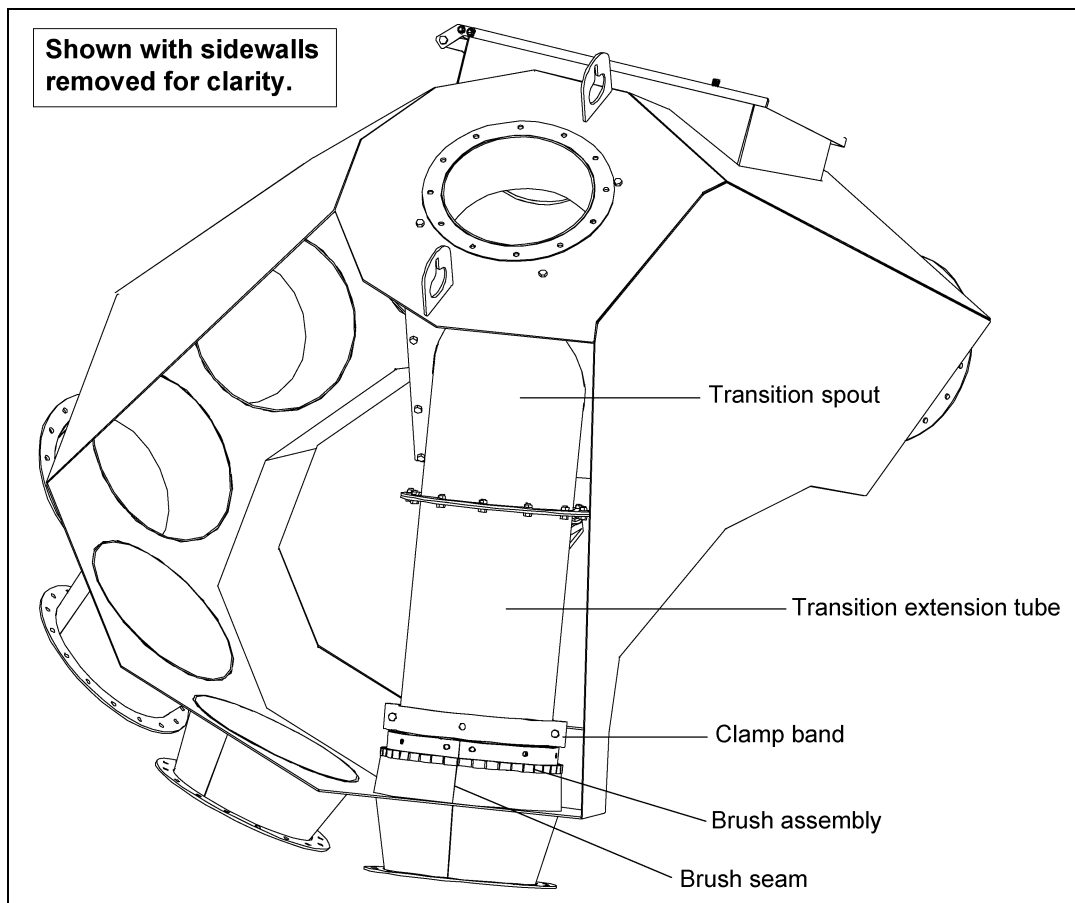
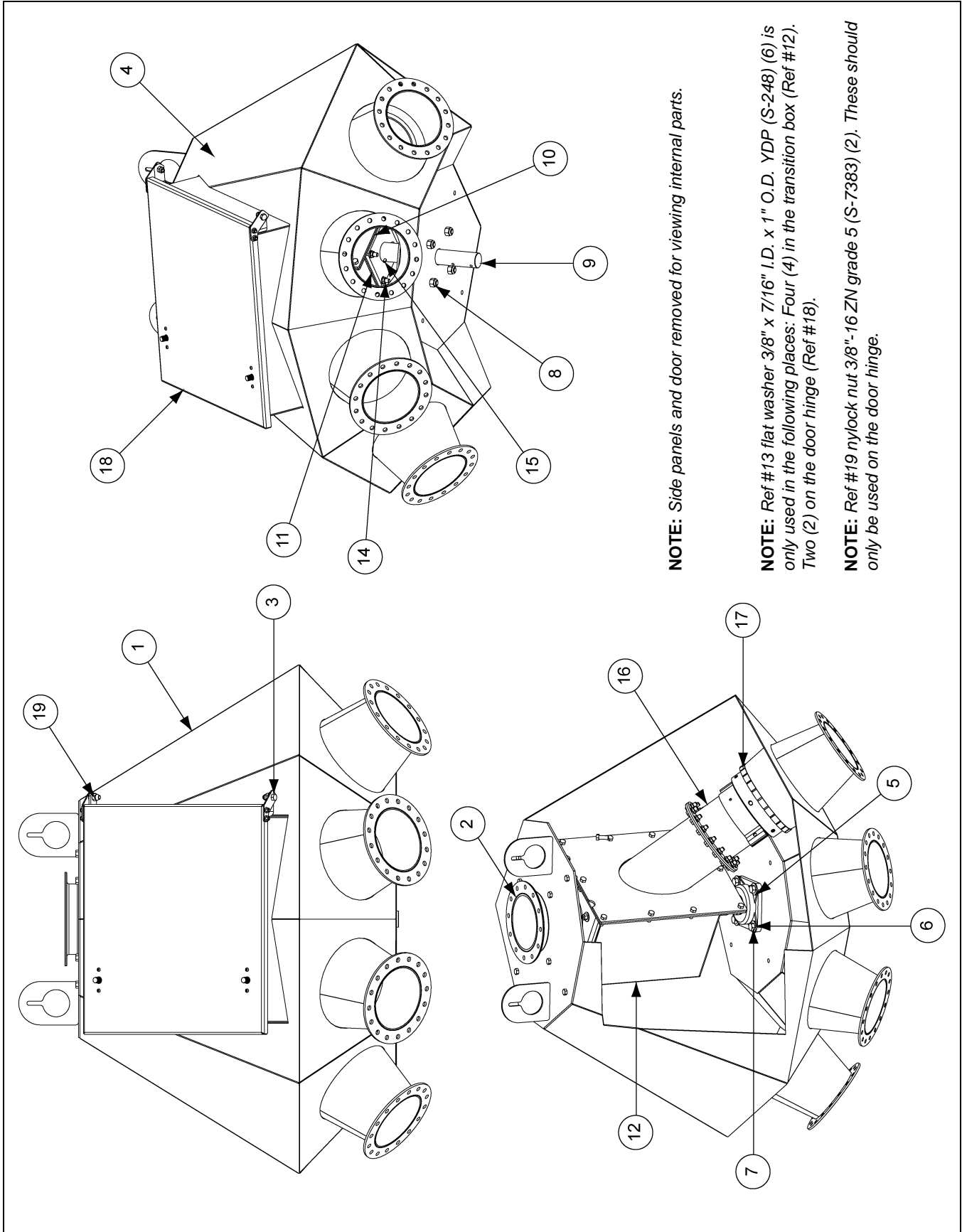


Figure 4D

1. 6" 4 Hole, 45° Distributor Assembly (DFB06445G) - [\(See Pages 16-17.\)](#)
2. 6" 6 Hole, 45° Distributor Assembly (DFB06645G) - [\(See Pages 18-19.\)](#)
3. 6" 8 Hole, 45° Distributor Assembly (DFB06845G) - [\(See Pages 20-21.\)](#)
4. 8" 6 Hole, 45° Distributor Assembly (DFB08645G) - [\(See Pages 22-23.\)](#)
5. 8" 8 Hole, 45° Distributor Assembly (DFB08845G) - [\(See Pages 24-25.\)](#)
6. 8" 10 Hole, 45° Distributor Assembly (DFB081045G) - [\(See Pages 26-27.\)](#)
7. 10" 6 Hole, 45° Distributor Assembly - Drawing A (DFB10645G) - [\(See Pages 28-29.\)](#)
8. 10" 6 Hole, 45° Distributor Assembly - Drawing B (DFB10645G) - [\(See Pages 30-31.\)](#)
9. 10" 8 Hole, 45° Distributor Assembly (DFB10845G) - [\(See Pages 32-33.\)](#)
10. 10" 10 Hole, 45° Distributor Assembly (DFB101045G) - [\(See Pages 34-35.\)](#)
11. 12" 4 Hole, 45° Distributor Assembly (DFB12445G) - [\(See Pages 36-37.\)](#)
12. 12" 6 Hole, 45° Distributor Assembly (DFB12645G) - [\(See Pages 38-39.\)](#)
13. 12" 8 Hole, 45° Distributor Assembly (DFB12845G) - [\(See Pages 40-41.\)](#)
14. 12" 10 Hole, 45° Distributor Assembly (DFB121045G) - [\(See Pages 42-43.\)](#)
15. 14" 4 Hole, 45° Distributor Assembly (DFB14445G) - [\(See Pages 44-45.\)](#)
16. 14" 6 Hole, 45° Distributor Assembly (DFB14645G) - [\(See Pages 46-47.\)](#)
17. 14" 8 Hole, 45° Distributor Assembly (DFB14845G) - [\(See Pages 48-49.\)](#)

6" 4 Hole, 45° Distributor Assembly (DFB06445G)



NOTE: Side panels and door removed for viewing internal parts.

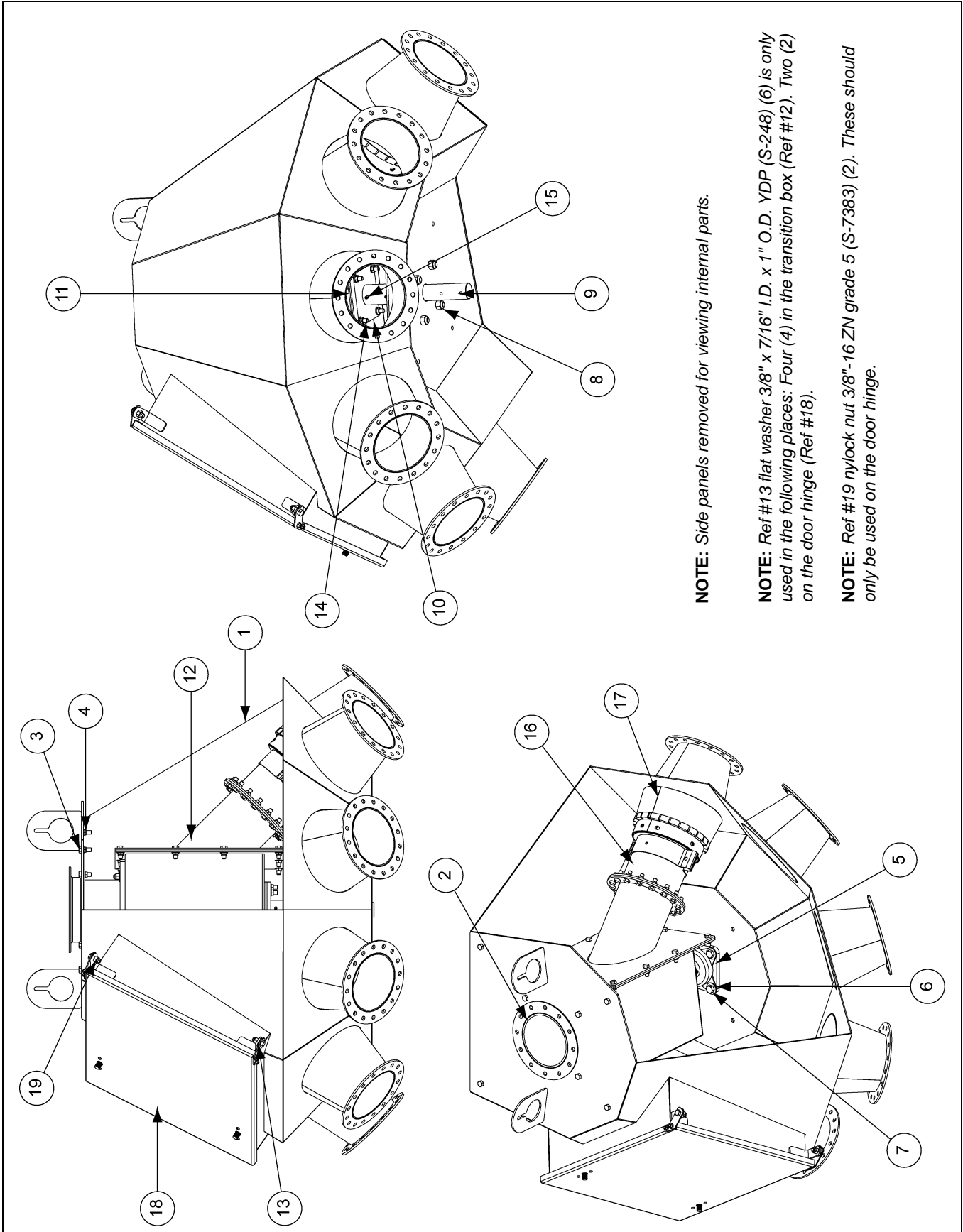
NOTE: Ref #13 flat washer 3/8" x 7/16" I.D. x 1" O.D. YDP (S-248) (6) is only used in the following places: Four (4) in the transition box (Ref #12). Two (2) on the door hinge (Ref #18).

NOTE: Ref #19 nylock nut 3/8"-16 ZN grade 5 (S-7383) (2). These should only be used on the door hinge.

6" 4 Hole, 45° Distributor Assembly (DFB06445G) Parts List

| Ref # | Part # | Description | Qty |
|-------|------------|---|-----|
| 1 | DFB0424G | 6" 4 Hole Body Weldment Distributor | 1 |
| 2 | DFB0422 | Inlet Sleeve Weldment | 1 |
| 3 | S-7469 | Bolt, HHCS 3/8"-16 x 1" ZN Grade 5 | 26 |
| 4 | S-968 | Flange Nut 3/8"-16 ZN Grade 5 Wide Flange | 28 |
| 5 | KD-PBA0003 | Bearing, 1-1/2" 4 Bolt | 1 |
| 6 | S-2120 | Flat Washer 1/2" SAE ZN | 4 |
| 7 | S-8760 | Bolt, HHCS 1/2"-13 x 1-1/2" ZN Grade 5 | 4 |
| 8 | S-8260 | Nylock Nut 1/2"-13 ZN Grade 5 | 4 |
| 9 | DFB0210 | Index Shaft | 1 |
| 10 | DFB0040 | Transition Box Support Weldment | 1 |
| 11 | DFB0043 | Plate, Transition Box Spacer | 2 |
| 12 | DFB0361 | 6" Transition Box with Liner | 1 |
| 13 | S-248 | Flat Washer 3/8" x 7/16" I.D. x 1" O.D. YDP | 6 |
| 14 | S-7515 | Bolt, HHCS 3/8"-16 x 1-1/2" Grade 5 | 4 |
| 15 | S-9288 | Spring Pin 1/4" x 2-1/2" Plain Steel Slotted Rolled | 3 |
| 16 | DFB0420 | 6" 6 Hole Transition Tube Extension Weldment | 1 |
| 17 | DFB0374 | Brush/Mount Assembly - 6" | 1 |
| 18 | DFB0032G | Door/Hinge Bracket Assembly | 1 |
| 19 | S-7383 | Nylock Nut 3/8"-16 ZN Grade 5 | 2 |

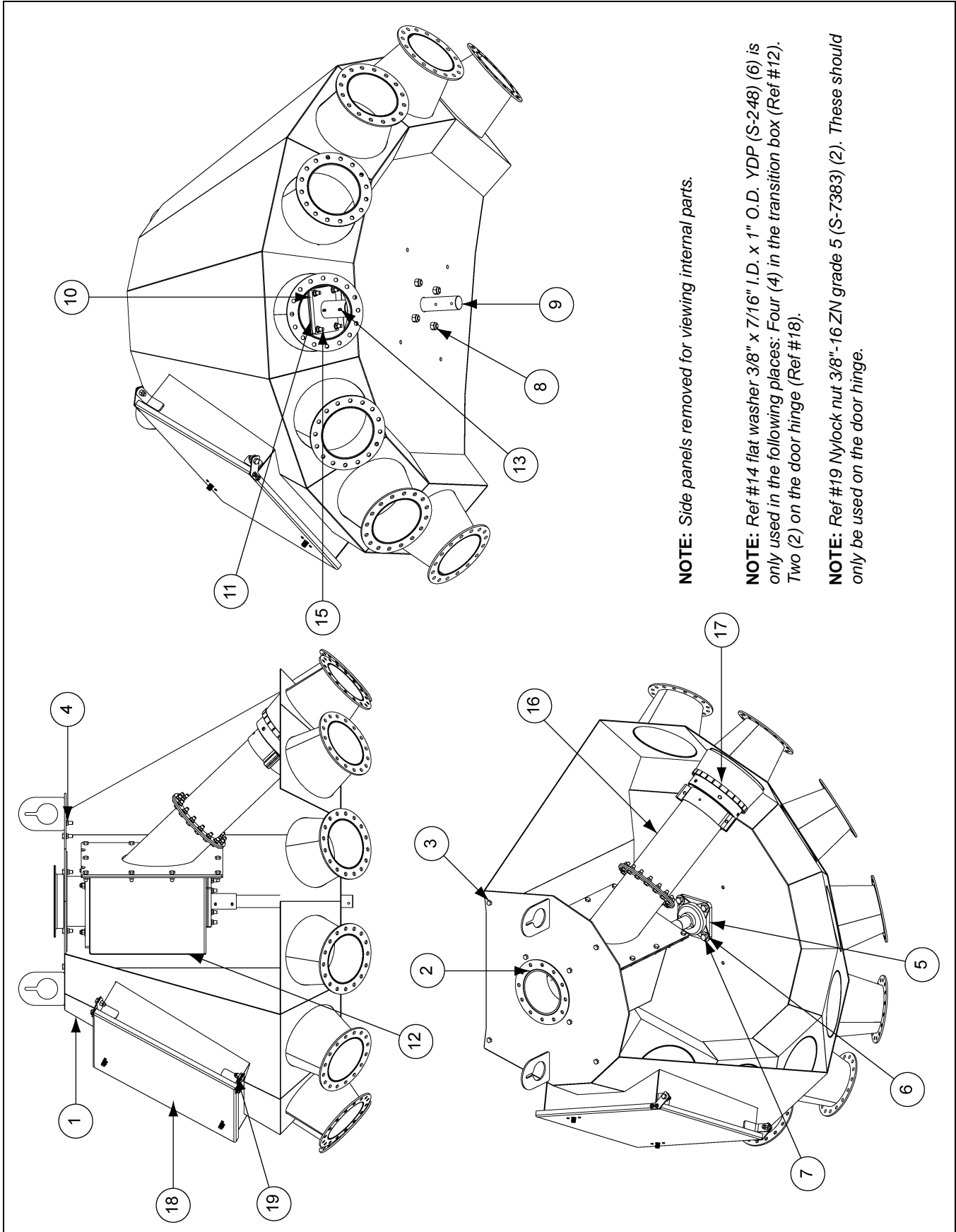
6" 6 Hole, 45° Distributor Assembly (DFB06645G)



6" 6 Hole, 45° Distributor Assembly (DFB06645G) Parts List

| Ref # | Part # | Description | Qty |
|-------|------------|---|-----|
| 1 | DFB0408G | 6" 6 Hole Body Weldment Distributor | 1 |
| 2 | DFB0422 | 6" 6 Hole Inlet Sleeve Weldment | 1 |
| 3 | S-7469 | Bolt, HHCS 3/8"-16 x 1" ZN Grade 5 | 26 |
| 4 | S-968 | Flange Nut 3/8"-16 ZN Grade 5 Wide Flange | 28 |
| 5 | KD-PBA0003 | Bearing, 1-1/2" 4 Bolt | 1 |
| 6 | S-2120 | Flat Washer 1/2" SAE ZN | 4 |
| 7 | S-8760 | Bolt, HHCS 1/2"-13 x 1-1/2" ZN Grade 5 | 4 |
| 8 | S-8260 | Nylock Nut 1/2"-13 ZN Grade 5 | 4 |
| 9 | DFB0210 | Index Shaft | 1 |
| 10 | DFB0040 | Transition Box Support Weldment | 1 |
| 11 | DFB0043 | Plate, Transition Box Spacer | 2 |
| 12 | DFB0361 | 6" Transition Box with Liner | 1 |
| 13 | S-248 | Flat Washer 3/8" x 7/16" I.D. x 1" O.D. YDP | 6 |
| 14 | S-7515 | Bolt, HHCS 3/8"-16 x 1-1/2" Grade 5 | 4 |
| 15 | S-9288 | Spring Pin 1/4" x 2-1/2" Plain Steel Slotted Rolled | 3 |
| 16 | DFB0420 | 6" 6 Hole Transition Tube Extension Weldment | 1 |
| 17 | DFB0374 | Brush/Mount Assembly - 6" | 1 |
| 18 | DFB0032G | Door/Hinge Bracket Assembly | 1 |
| 19 | S-7383 | Nylock Nut 3/8"-16 ZN Grade 5 | 2 |

6" 8 Hole, 45° Distributor Assembly (DFB06845G)



NOTE: Side panels removed for viewing internal parts.

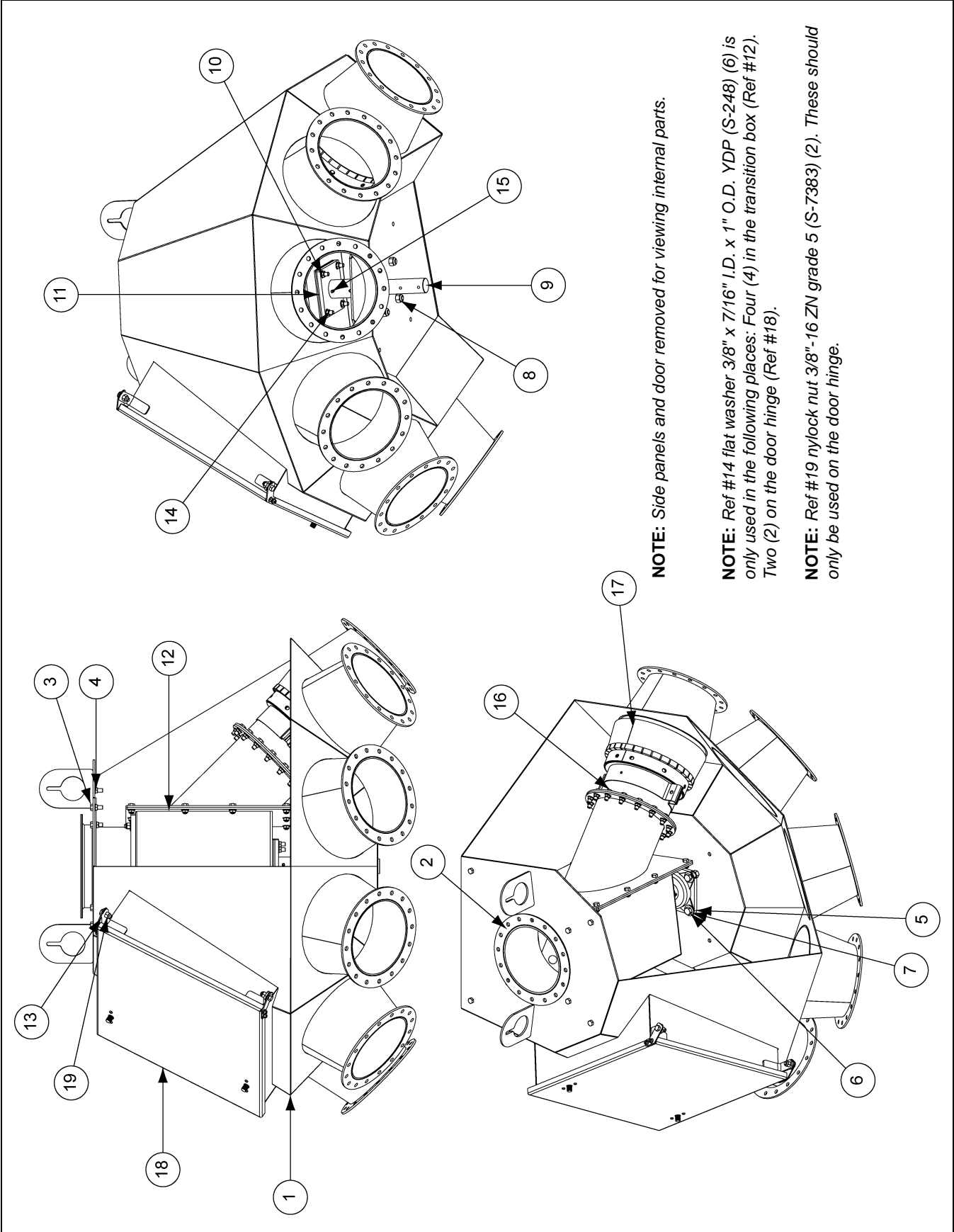
NOTE: Ref #14 flat washer 3/8" x 7/16" I.D. x 1" O.D. YDP (S-248) (6) is only used in the following places: Four (4) in the transition box (Ref #12). Two (2) on the door hinge (Ref #18).

NOTE: Ref #19 Nylock nut 3/8"-16 ZN grade 5 (S-7383) (2). These should only be used on the door hinge.

6" 8 Hole, 45° Distributor Assembly (DFB06845G) Parts List

| Ref # | Part # | Description | Qty |
|-------|------------|---|-----|
| 1 | DFB0347G | 6" 8 Hole Body Weldment Distributor | 1 |
| 2 | DFB0381 | 6" 8 Hole Inlet Sleeve Weldment | 1 |
| 3 | S-7469 | Bolt, HHCS 3/8"-16 x 1" ZN Grade 5 | 26 |
| 4 | S-968 | Flange Nut 3/8"-16 ZN Grade 5 Wide Flange | 28 |
| 5 | KD-PBA0003 | Bearing, 1-1/2" 4 Bolt | 1 |
| 6 | S-2120 | Flat Washer 1/2" SAE ZN | 4 |
| 7 | S-8760 | Bolt, HHCS 1/2"-13 x 1-1/2" ZN Grade 5 | 4 |
| 8 | S-8260 | Nylock Nut 1/2"-13 ZN Grade 5 | 4 |
| 9 | DFB0360 | Index Shaft 6" 8 Hole Distributor | 1 |
| 10 | DFB0040 | Transition Box Support Weldment | 1 |
| 11 | DFB0043 | Plate, Transition Box Spacer | 2 |
| 12 | DFB0361 | 6" Transition Box with Liner | 1 |
| 13 | S-9288 | Spring Pin 1/4" x 2-1/2" Plain Steel Slotted Rolled | 3 |
| 14 | S-248 | Flat Washer 3/8" x 7/16" I.D. x 1" O.D. YDP | 6 |
| 15 | S-7515 | Bolt, HHCS 3/8"-16 x 1-1/2" Grade 5 | 4 |
| 16 | DFB0372 | 6" 8 Hole Transition Tube Extension Weldment | 1 |
| 17 | DFB0374 | Brush/Mount Assembly - 6" | 1 |
| 18 | DFB0032G | Door/Hinge Bracket Assembly | 1 |
| 19 | S-7383 | Nylock Nut 3/8"-16 ZN Grade 5 | 2 |

8" 6 Hole, 45° Distributor Assembly (DFB08645G)



NOTE: Side panels and door removed for viewing internal parts.

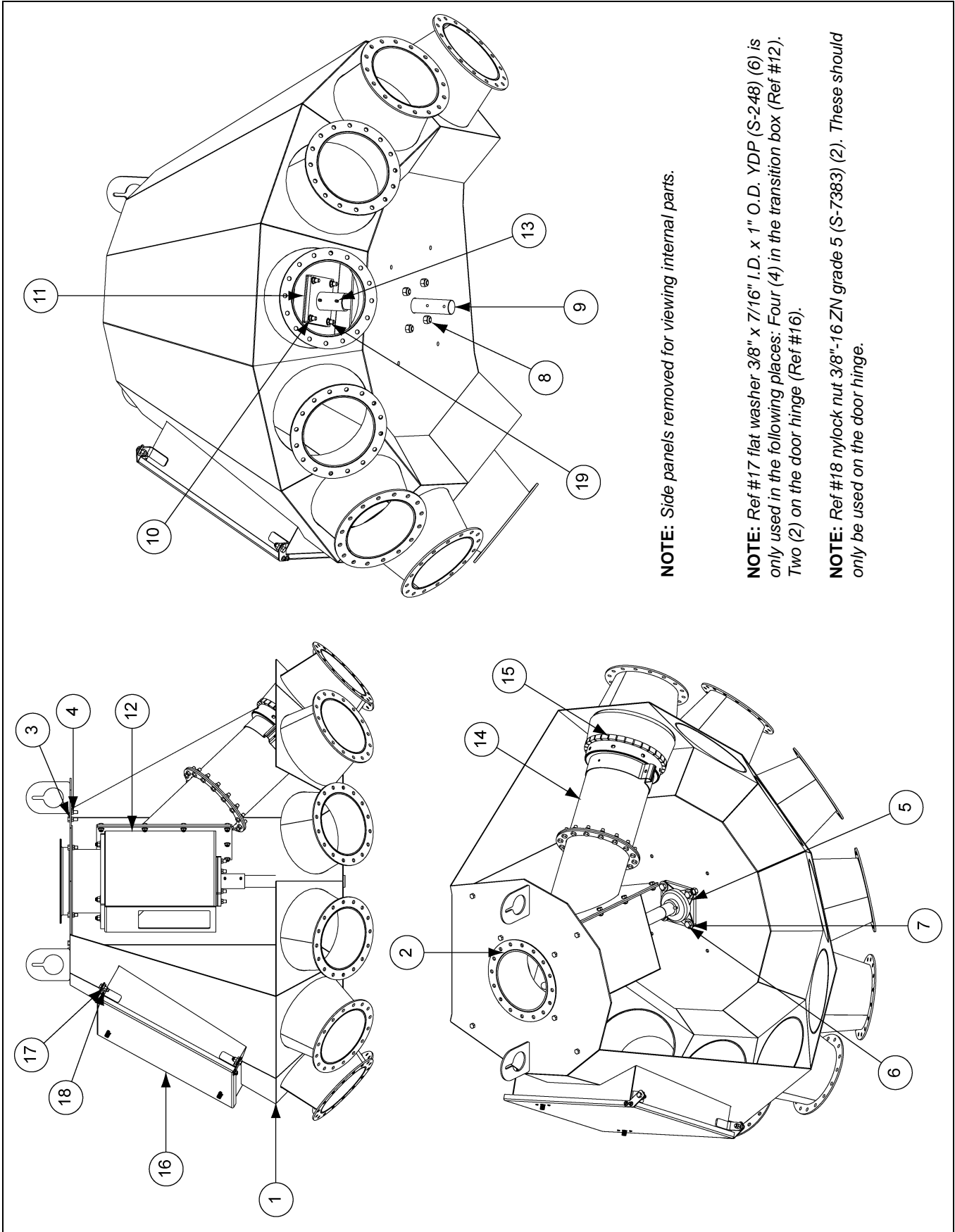
NOTE: Ref #14 flat washer 3/8" x 7/16" I.D. x 1" O.D. YDP (S-248) (6) is only used in the following places: Four (4) in the transition box (Ref #12). Two (2) on the door hinge (Ref #18).

NOTE: Ref #19 nylock nut 3/8"-16 ZN grade 5 (S-7383) (2). These should only be used on the door hinge.

8" 6 Hole, 45° Distributor Assembly (DFB08645G) Parts List

| Ref # | Part # | Description | Qty |
|-------|------------|---|-----|
| 1 | DFB0199G | 8" 6 Hole Body Weldment Distributor | 1 |
| 2 | DFB0196 | 8" Inlet Sleeve Weldment Distributor | 1 |
| 3 | S-7469 | Bolt, HHCS 3/8"-16 x 1" ZN Grade 5 | 26 |
| 4 | S-968 | Flange Nut 3/8"-16 ZN Grade 5 Wide Flange | 28 |
| 5 | KD-PBA0003 | Bearing, 1-1/2" 4 Bolt | 1 |
| 6 | S-2120 | Flat Washer 1/2" SAE ZN | 4 |
| 7 | S-8760 | Bolt, HHCS 1/2"-13 x 1-1/2" ZN Grade 5 | 4 |
| 8 | S-8260 | Nylock Nut 1/2"-13 ZN Grade 5 | 4 |
| 9 | DFB0210 | Index Shaft 8" 6 Hole Distributor | 1 |
| 10 | DFB0040 | Transition Box Support Weldment | 1 |
| 11 | DFB0043 | Plate, Transition Box Spacer | 2 |
| 12 | DFB0176 | 8" Transition Box with Liner | 1 |
| 13 | S-248 | Flat Washer 3/8" x 7/16" I.D. x 1" O.D. YDP | 6 |
| 14 | S-7515 | Bolt, HHCS 3/8"-16 x 1-1/2" Grade 5 | 4 |
| 15 | S-9288 | Spring Pin 1/4" x 2-1/2" Plain Steel Slotted Rolled | 3 |
| 16 | DFB0211 | 8" 6 Hole Transition Tube Extension Weldment | 1 |
| 17 | DFB0189 | Brush/Mount Assembly - 8" | 1 |
| 18 | DFB0032G | Door/Hinge Bracket Assembly | 1 |
| 19 | S-7383 | Nylock Nut 3/8"-16 ZN Grade 5 | 2 |

8" 8 Hole, 45° Distributor Assembly (DFB08845G)

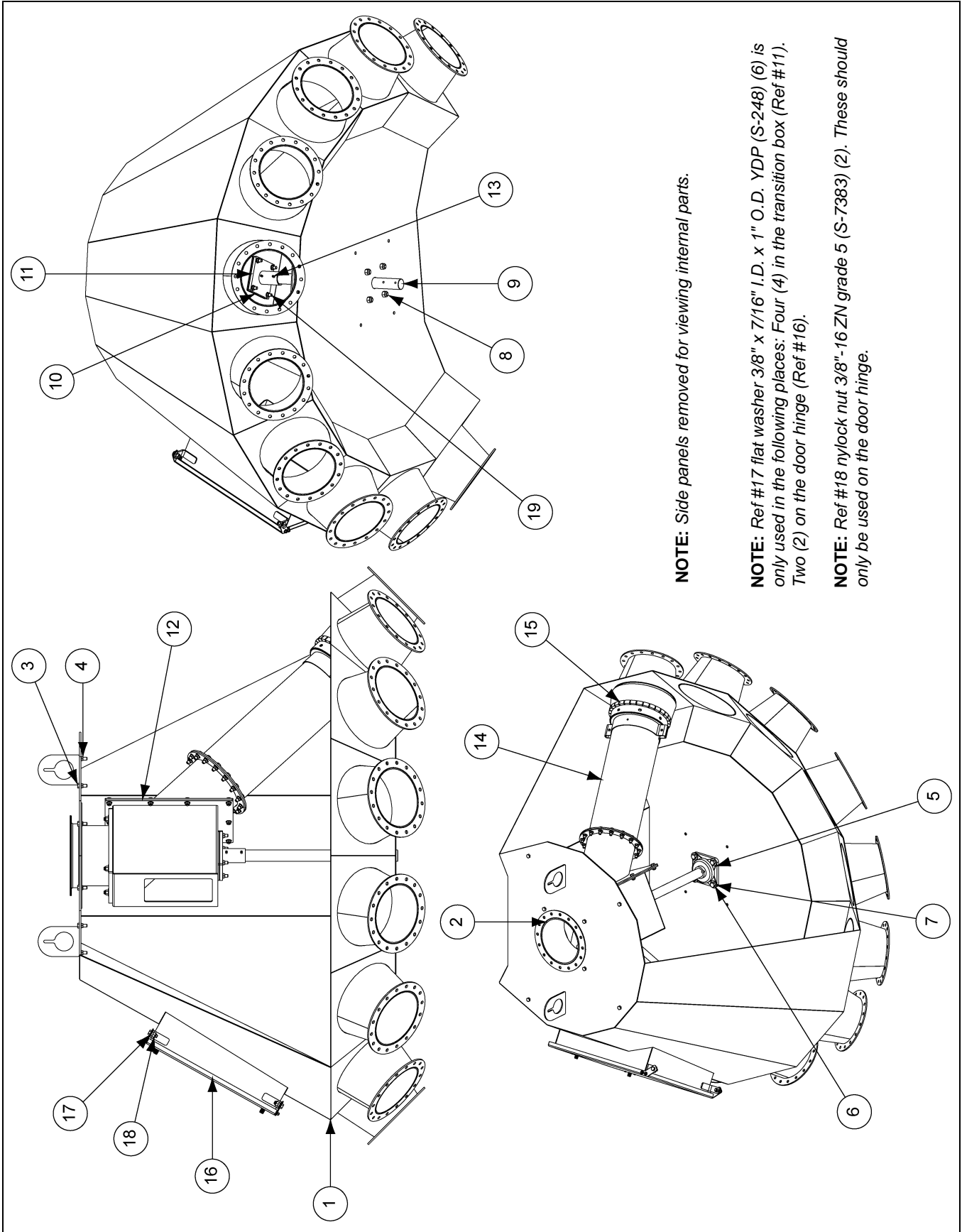


8" 8 Hole, 45° Distributor Assembly (DFB08845G) Parts List

| Ref # | Part # | Description | Qty |
|-------|------------|---|-----|
| 1 | DFB0161G | 8" 8 Hole Body Weldment Distributor | 1 |
| 2 | DFB0196 | 8" Inlet Sleeve Weldment Distributor | 1 |
| 3 | S-7469 | Bolt, HHCS 3/8"-16 x 1" ZN Grade 5 | 26 |
| 4 | S-968 | Flange Nut 3/8"-16 ZN Grade 5 Wide Flange | 28 |
| 5 | KD-PBA0003 | Bearing, 1-1/2" 4 Bolt | 1 |
| 6 | S-2120 | Flat Washer 1/2" SAE ZN | 4 |
| 7 | S-8760 | Bolt, HHCS 1/2"-13 x 1-1/2" ZN Grade 5 | 4 |
| 8 | S-8260 | Nylock Nut 1/2"-13 ZN Grade 5 | 4 |
| 9 | DFB0175 | Indexing Shaft 8" 8 Hole Distributor | 1 |
| 10 | DFB0040 | Transition Box Support Weldment | 1 |
| 11 | DFB0043 | Plate, Transition Box Spacer | 2 |
| 12 | DFB0176 | 8" Transition Box with Liner | 1 |
| 13 | S-9288 | Spring Pin 1/4" x 2-1/2" Plain Steel Slotted Rolled | 3 |
| 14 | DFB0187 | 8" 8 Hole Transition Tube Extension Weldment | 1 |
| 15 | DFB0189 | Brush/Mount Assembly - 8" | 1 |
| 16 | DFB0032G | Door/Hinge Bracket Assembly | 1 |
| 17 | S-248 | Flat Washer 3/8" x 7/16" I.D. x 1" O.D. YDP | 6 |
| 18 | S-7383 | Nylock Nut 3/8"-16 ZN Grade 5 | 2 |
| 19 | S-7515 | Bolt, HHCS 3/8"-16 x 1-1/2" Grade 5 | 4 |

5. Parts List

8" 10 Hole, 45° Distributor Assembly (DFB081045G)



NOTE: Side panels removed for viewing internal parts.

NOTE: Ref #17 flat washer 3/8" x 7/16" I.D. x 1" O.D. YDP (S-248) (6) is only used in the following places: Four (4) in the transition box (Ref #11). Two (2) on the door hinge (Ref #16).

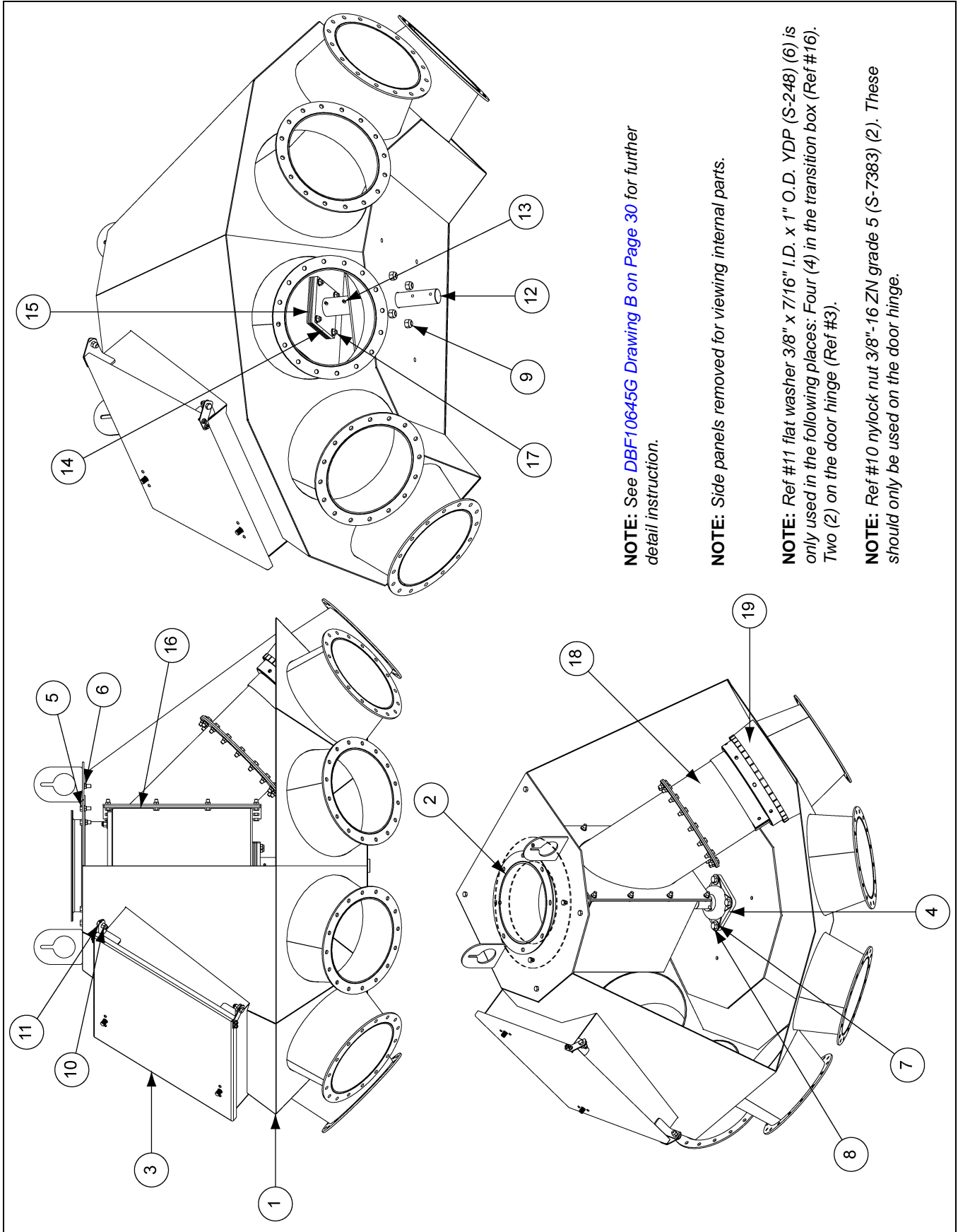
NOTE: Ref #18 nylock nut 3/8"-16 ZN grade 5 (S-7383) (2). These should only be used on the door hinge.

8" 10 Hole, 45° Distributor Assembly (DFB081045G) Parts List

| Ref # | Part # | Description | Qty |
|-------|------------|---|-----|
| 1 | DFB0213G | 8" 10 Hole Body Weldment Distributor | 1 |
| 2 | DFB0196 | 8" Inlet Sleeve Weldment Distributor | 1 |
| 3 | S-7469 | Bolt, HHCS 3/8"-16 x 1" ZN Grade 5 | 26 |
| 4 | S-968 | Flange Nut 3/8"-16 ZN Grade 5 Wide Flange | 28 |
| 5 | KD-PBA0003 | Bearing, 1-1/2" 4 Bolt | 1 |
| 6 | S-2120 | Flat Washer 1/2" SAE ZN | 4 |
| 7 | S-8760 | Bolt, HHCS 1/2"-13 x 1-1/2" ZN Grade 5 | 4 |
| 8 | S-8260 | Nylock Nut 1/2"-13 ZN Grade 5 | 4 |
| 9 | DFB0226 | Indexing Shaft 8" 10 Hole Distributor | 1 |
| 10 | DFB0040 | Transition Box Support Weldment | 1 |
| 11 | DFB0043 | Plate, Transition Box Spacer | 2 |
| 12 | DFB0176 | 8" Transition Box with Liner | 1 |
| 13 | S-9288 | Spring Pin 1/4" x 2-1/2" Plain Steel Slotted Rolled | 3 |
| 14 | DFB0227 | 8" 10 Hole Transition Tube Extension Weldment | 1 |
| 15 | DFB0189 | Brush/Mount Assembly - 8" | 1 |
| 16 | DFB0032G | Door/Hinge Bracket Assembly | 1 |
| 17 | S-248 | Flat Washer 3/8" x 7/16" I.D. x 1" O.D. YDP | 6 |
| 18 | S-7383 | Nylock Nut 3/8"-16 ZN Grade 5 | 2 |
| 19 | S-7515 | Bolt, HHCS 3/8"-16 x 1-1/2" Grade 5 | 4 |

5. Parts List

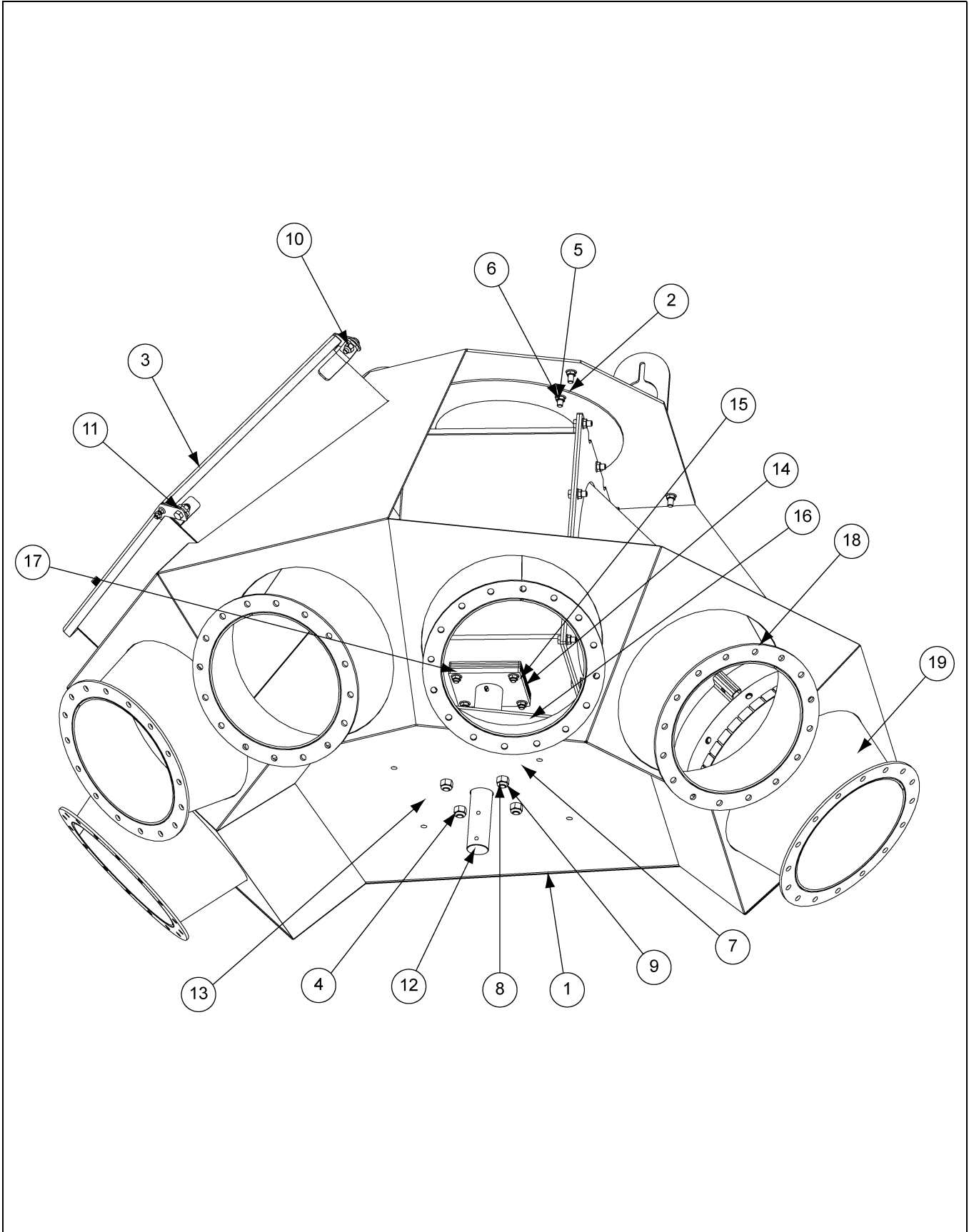
10" 6 Hole, 45° Distributor Assembly - Drawing A (DFB10645G)



10" 6 Hole, 45° Distributor Assembly - Drawing A (DFB10645G) Parts List

| Ref # | Part # | Description | Qty |
|-------|------------|---|-----|
| 1 | DFB0001G | 10" 6 Hole Body Weldment Distributor | 1 |
| 2 | DFB0035 | 10" Inlet Sleeve Weldment Distributor | 1 |
| 3 | DFB0032G | Door/Hinge Bracket Assembly | 1 |
| 4 | KD-PBA0003 | Bearing, 1-1/2" 4 Bolt | 1 |
| 5 | S-7469 | Bolt, HHCS 3/8"-16 x 1" ZN Grade 5 | 26 |
| 6 | S-968 | Flange Nut 3/8"-16 ZN Grade 5 Wide Flange | 28 |
| 7 | S-2120 | Flat Washer 1/2" SAE ZN | 4 |
| 8 | S-8760 | Bolt, HHCS 1/2"-13 x 1-1/2" ZN Grade 5 | 4 |
| 9 | S-8260 | Nylock Nut 1/2"-13 ZN Grade 5 | 4 |
| 10 | S-7383 | Nylock Nut 3/8"-16 ZN Grade 5 | 2 |
| 11 | S-248 | Flat Washer 3/8" x 7/16" I.D. x 1" O.D. YDP | 6 |
| 12 | DFB0045 | Indexing Shaft 10" 6 Hole Distributor | 1 |
| 13 | S-9288 | Spring Pin 1/4" x 2-1/2" Plain Steel Slotted Rolled | 3 |
| 14 | DFB0040 | Transition Box Support Weldment | 1 |
| 15 | DFB0043 | Plate, Transition Box Spacer | 4 |
| 16 | DFB0015 | 10" Transition Box with Liner | 1 |
| 17 | S-7515 | Bolt, HHCS 3/8"-16 x 1-1/2" Grade 5 | 4 |
| 18 | DFB0024 | 10" 6 Hole Transition Tube Extension Weldment | 1 |
| 19 | DFB0060 | Brush/Mount Assembly - 10" | 1 |

10" 6 Hole, 45° Distributor Assembly - Drawing B (DFB10645G)

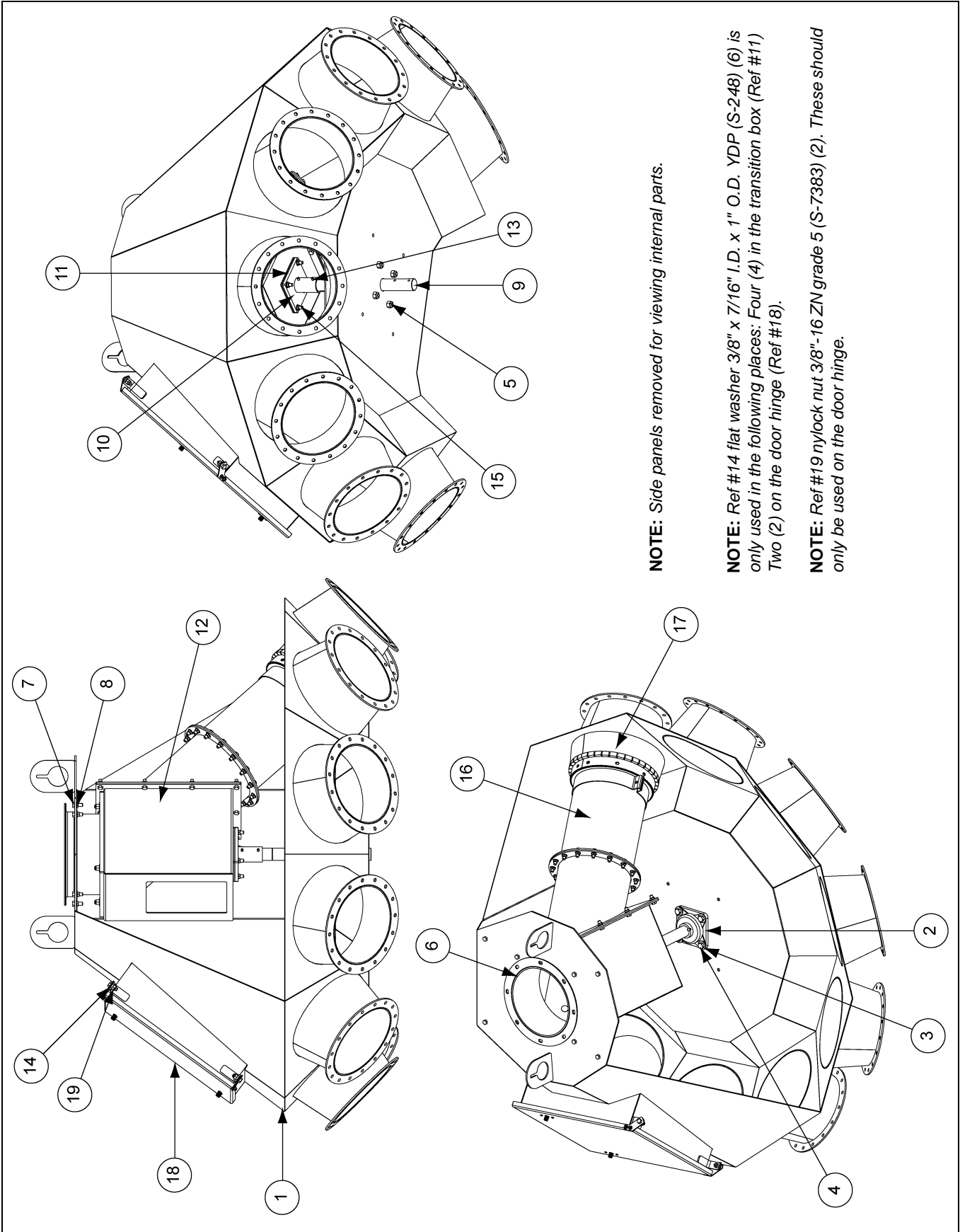


10" 6 Hole, 45° Distributor Assembly - Drawing B (DFB10645G) Parts List

| Ref # | Part # | Description | Qty |
|-------|------------|---|-----|
| 1 | DFB0001G | 10" 6 Hole Body Weldment Distributor | 1 |
| 2 | DFB0035 | 10" Inlet Sleeve Weldment Distributor | 1 |
| 3 | DFB0032G | Door/Hinge Bracket Assembly | 1 |
| 4 | KD-PBA0003 | Bearing, 1-1/2" 4 Bolt | 1 |
| 5 | S-7469 | Bolt, HHCS 3/8"-16 x 1" ZN Grade 5 | 26 |
| 6 | S-968 | Flange Nut 3/8"-16 ZN Grade 5 Wide Flange | 28 |
| 7 | S-2120 | Flat Washer 1/2" SAE ZN | 4 |
| 8 | S-8760 | Bolt, HHCS 1/2"-13 x 1-1/2" ZN Grade 5 | 4 |
| 9 | S-8260 | Nylock Nut 1/2"-13 ZN Grade 5 | 4 |
| 10 | S-7383 | Nylock Nut 3/8"-16 ZN Grade 5 | 2 |
| 11 | S-248 | Flat Washer 3/8" x 7/16" I.D. x 1" O.D. YDP | 6 |
| 12 | DFB0045 | Indexing Shaft 10" 6 Hole Distributor | 1 |
| 13 | S-9288 | Spring Pin 1/4" x 2-1/2" Plain Steel Slotted Rolled | 3 |
| 14 | DFB0040 | Transition Box Support Weldment | 1 |
| 15 | DFB0043 | Plate, Transition Box Spacer | 4 |
| 16 | DFB0015 | 10" Transition Box with Liner | 1 |
| 17 | S-7515 | Bolt, HHCS 3/8"-16 x 1-1/2" Grade 5 | 4 |
| 18 | DFB0024 | 10" 6 Hole Transition Tube Extension Weldment | 1 |
| 19 | DFB0060 | Brush/Mount Assembly - 10" | 1 |

5. Parts List

10" 8 Hole, 45° Distributor Assembly (DFB10845G)

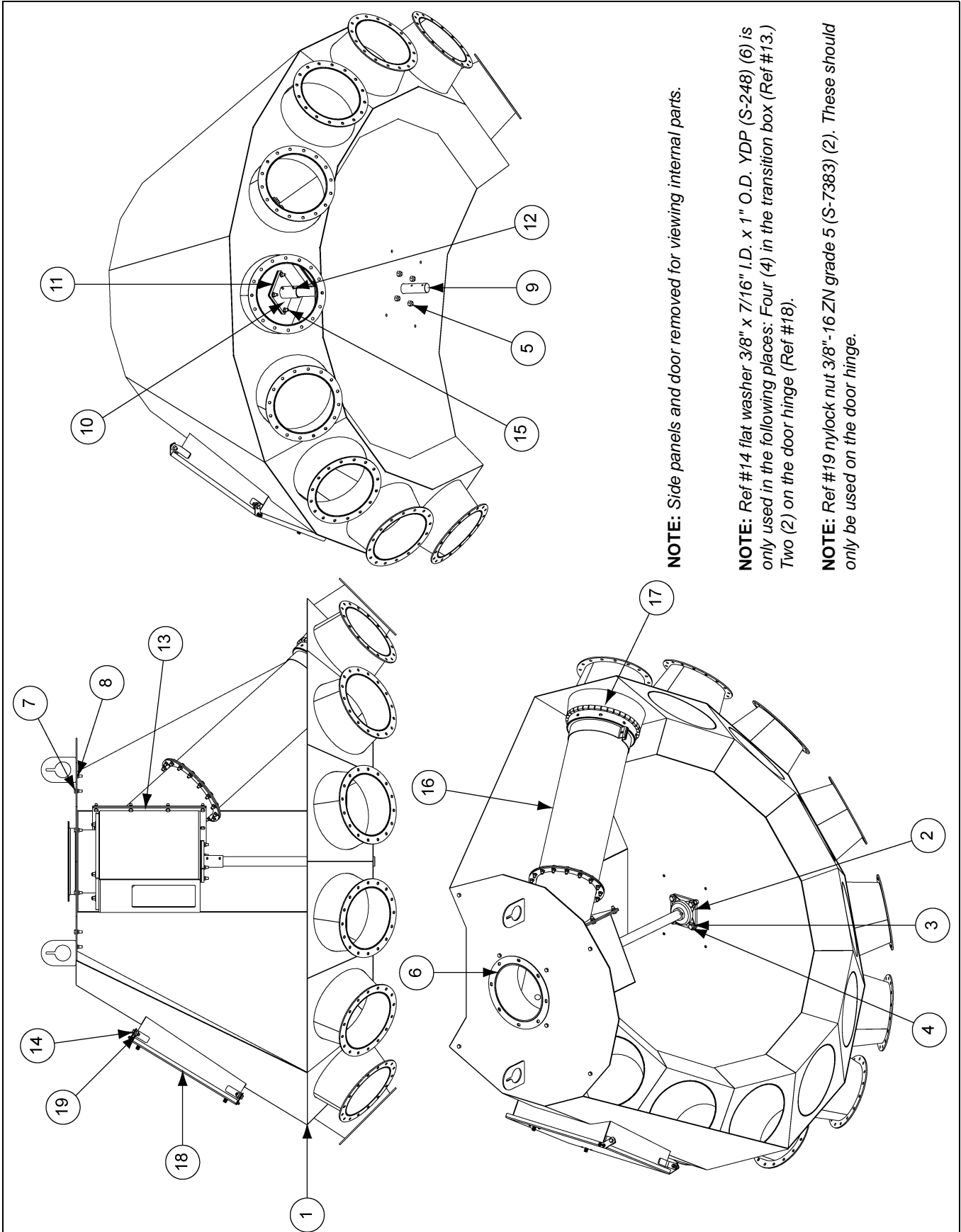


10" 8 Hole, 45° Distributor Assembly (DFB10845G) Parts List

| Ref # | Part # | Description | Qty |
|-------|------------|---|-----|
| 1 | DFB0063G | 10" 8 Hole Body Weldment Distributor | 1 |
| 2 | KD-PBA0003 | Bearing, 1-1/2" 4 Bolt | 1 |
| 3 | S-2120 | Flat Washer 1/2" SAE ZN | 4 |
| 4 | S-8760 | Bolt, HHCS 1/2"-13 x 1-1/2" ZN Grade 5 | 4 |
| 5 | S-8260 | Nylock Nut 1/2"-13 ZN Grade 5 | 4 |
| 6 | DFB0035 | 10" Inlet Sleeve Weldment Distributor | 1 |
| 7 | S-7469 | Bolt, HHCS 3/8"-16 x 1" ZN Grade 5 | 26 |
| 8 | S-968 | Flange Nut 3/8"-16 ZN Grade 5 Wide Flange | 28 |
| 9 | DFB0142 | Index Shaft 10" 8 Hole Distributor | 1 |
| 10 | DFB0040 | Transition Box Support Weldment | 1 |
| 11 | DFB0043 | Plate, Transition Box Spacer | 2 |
| 12 | DFB0015 | 10" Transition Box with Liner | 1 |
| 13 | S-9288 | Spring Pin 1/4" x 2-1/2" Plain Steel Slotted Rolled | 3 |
| 14 | S-248 | Flat Washer 3/8" x 7/16" I.D. x 1" O.D. YDP | 6 |
| 15 | S-7515 | Bolt, HHCS 3/8"-16 x 1-1/2" Grade 5 | 4 |
| 16 | DFB0079 | 10" 8 Hole Transition Tube Extension Weldment | 1 |
| 17 | DFB0060 | Brush/Mount Assembly - 10" | 1 |
| 18 | DFB0032G | Door/Hinge Bracket Assembly | 1 |
| 19 | S-7383 | Nylock Nut 3/8"-16 ZN Grade 5 | 2 |

5. Parts List

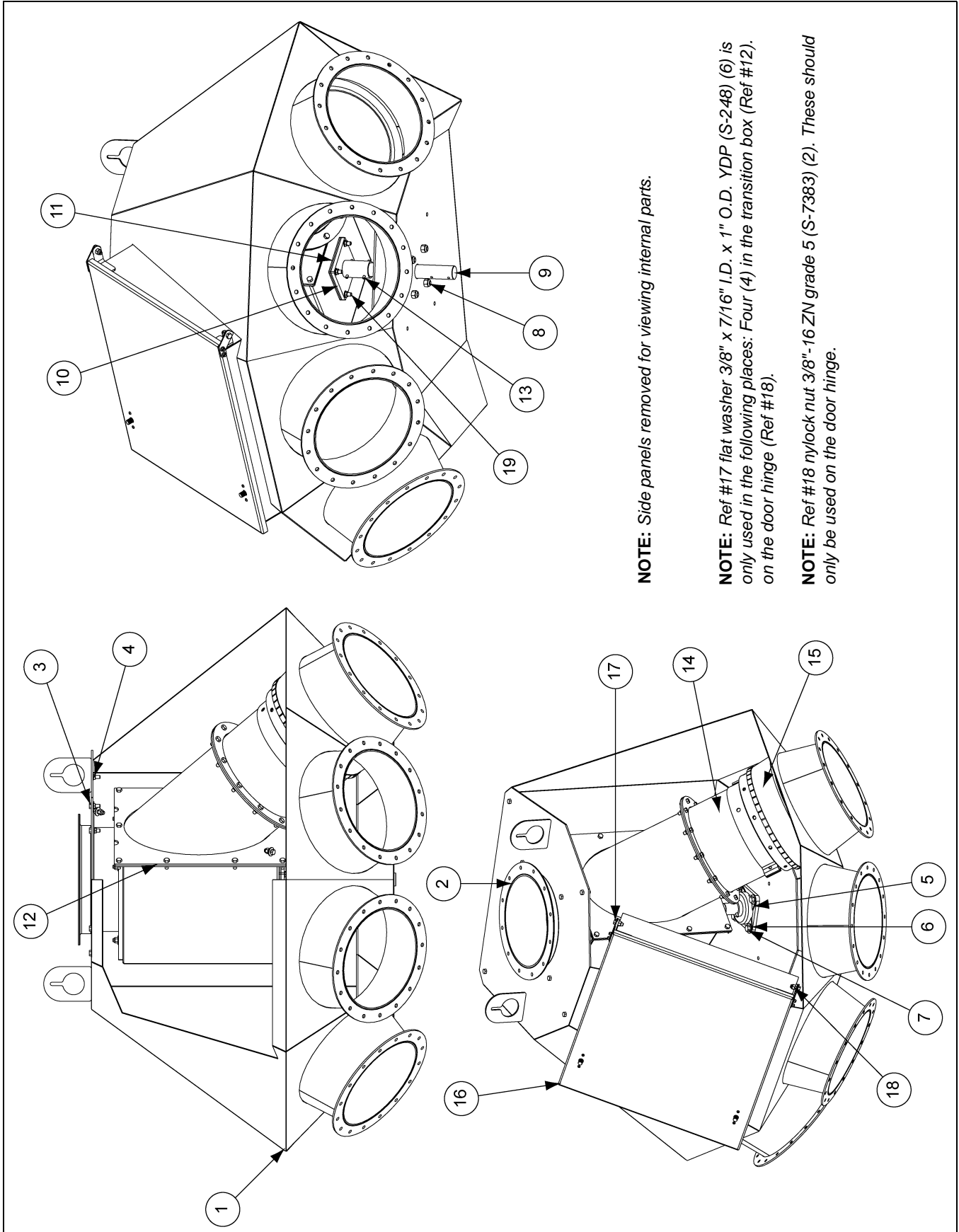
10" 10 Hole, 45° Distributor Assembly (DFB101045G)



10" 10 Hole, 45° Distributor Assembly (DFB101045G) Parts List

| Ref # | Part # | Description | Qty |
|-------|------------|---|-----|
| 1 | DFB0143G | 10" 10 Hole Body Weldment Distributor | 1 |
| 2 | KD-PBA0003 | Bearing, 1-1/2" 4 Bolt | 1 |
| 3 | S-2120 | Flat Washer 1/2" SAE ZN | 4 |
| 4 | S-8760 | Bolt, HHCS 1/2"-13 x 1-1/2" ZN Grade 5 | 4 |
| 5 | S-8260 | Nylock Nut 1/2"-13 ZN Grade 5 | 4 |
| 6 | DFB0035 | 10" Inlet Sleeve Weldment Distributor | 1 |
| 7 | S-7469 | Bolt, HHCS 3/8"-16 x 1" ZN Grade 5 | 26 |
| 8 | S-968 | Flange Nut 3/8"-16 ZN Grade 5 Wide Flange | 28 |
| 9 | DFB0144 | Index Shaft 10" 10 Hole Distributor | 1 |
| 10 | DFB0040 | Transition Box Support Weldment | 1 |
| 11 | DFB0043 | Plate, Transition Box Spacer | 2 |
| 12 | S-9288 | Spring Pin 1/4" x 2-1/2" Plain Steel Slotted Rolled | 3 |
| 13 | DFB0015 | 10" Transition Box with Liner | 1 |
| 14 | S-248 | Flat Washer 3/8" x 7/16" I.D. x 1" O.D. YDP | 6 |
| 15 | S-7515 | Bolt, HHCS 3/8"-16 x 1-1/2" Grade 5 | 4 |
| 16 | DFB0093 | 10" 10 Hole Transition Tube Extension Weldment | 1 |
| 17 | DFB0060 | Brush/Mount Assembly - 10" | 1 |
| 18 | DFB0032G | Door/Hinge Bracket Assembly | 1 |
| 19 | S-7383 | Nylock Nut 3/8"-16 ZN Grade 5 | 2 |

12" 4 Hole, 45° Distributor Assembly (DFB12445G)



NOTE: Side panels removed for viewing internal parts.

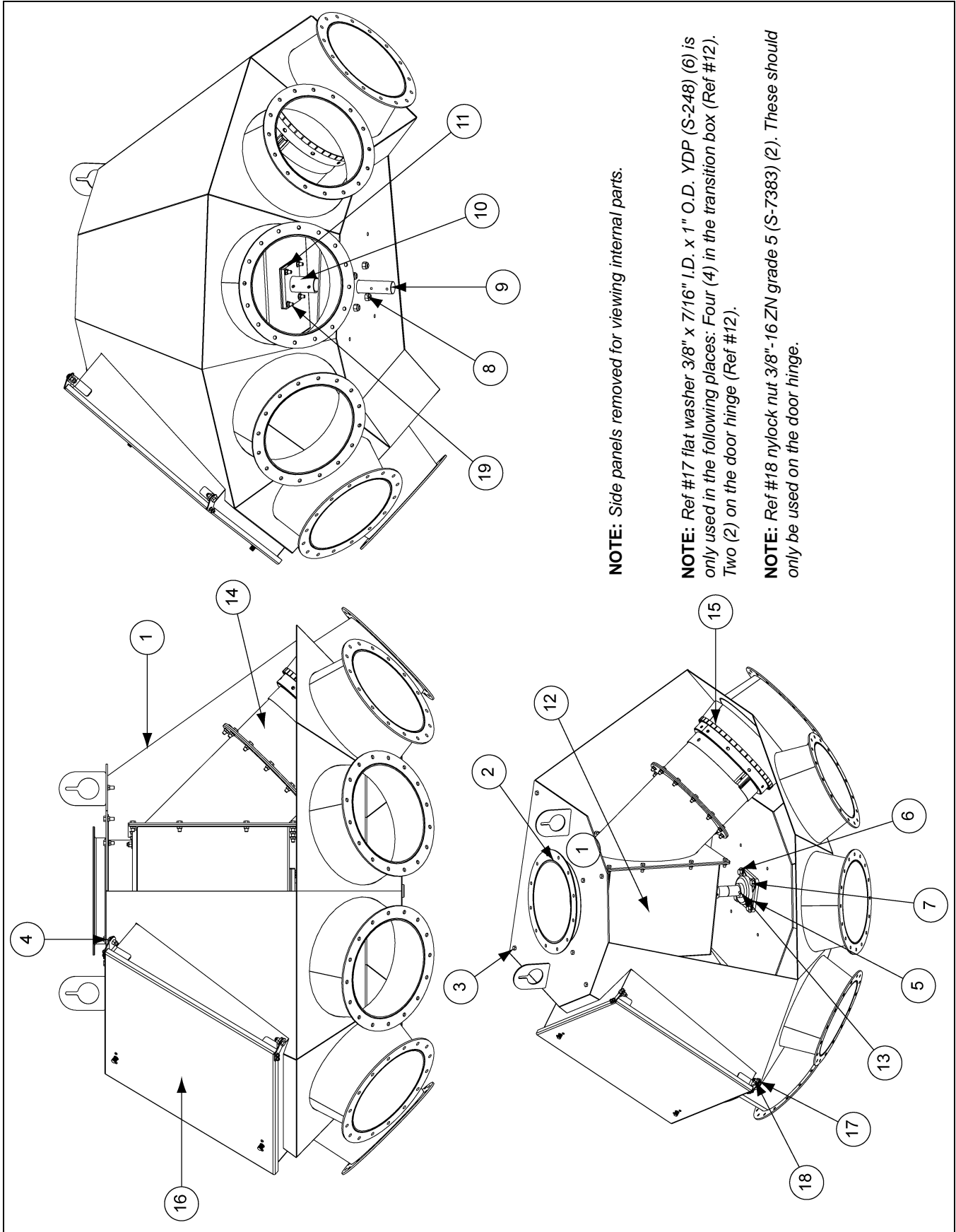
NOTE: Ref #17 flat washer 3/8" x 7/16" I.D. x 1" O.D. YDP (S-248) (6) is only used in the following places: Four (4) in the transition box (Ref #12), on the door hinge (Ref #18).

NOTE: Ref #18 nylock nut 3/8"-16 ZN grade 5 (S-7383) (2). These should only be used on the door hinge.

12" 4 Hole, 45° Distributor Assembly (DFB12445G) Parts List

| Ref # | Part # | Description | Qty |
|-------|------------|---|-----|
| 1 | DFB0230G | 12" 4 Hole Body Weldment Distributor | 1 |
| 2 | DFB0136 | 12" Inlet Sleeve Weldment Distributor | 1 |
| 3 | S-7469 | Bolt, HHCS 3/8"-16 x 1" ZN Grade 5 | 22 |
| 4 | S-968 | Flange Nut 3/8"-16 ZN Grade 5 Wide Flange | 24 |
| 5 | KD-PBA0003 | Bearing, 1-1/2" 4 Bolt | 1 |
| 6 | S-2120 | Flat Washer 1/2" SAE ZN | 4 |
| 7 | S-8760 | Bolt, HHCS 1/2"-13 x 1-1/2" ZN Grade 5 | 4 |
| 8 | S-8260 | Nylock Nut 1/2"-13 ZN Grade 5 | 4 |
| 9 | DFB0158 | Index Shaft 12" 6 Hole Distributor | 1 |
| 10 | DFB0040 | Transition Box Support Weldment | 1 |
| 11 | DFB0043 | Plate, Transition Box Spacer | 2 |
| 12 | DFB0114 | 12" Transition Box with Liner | 1 |
| 13 | S-9288 | Spring Pin 1/4" x 2-1/2" Plain Steel Slotted Rolled | 3 |
| 14 | DFB0159 | 12" 6 Hole Transition Tube Extension Weldment | 1 |
| 15 | DFB0127 | Brush/Mount Assembly - 12" | 1 |
| 16 | DFB0146G | Door/Hinge Bracket Assembly 12" | 1 |
| 17 | S-248 | Flat Washer 3/8" x 7/16" I.D. x 1" O.D. YDP | 6 |
| 18 | S-7383 | Nylock Nut 3/8"-16 ZN Grade 5 | 2 |
| 19 | S-7515 | Bolt, HHCS 3/8"-16 x 1-1/2" Grade 5 | 4 |

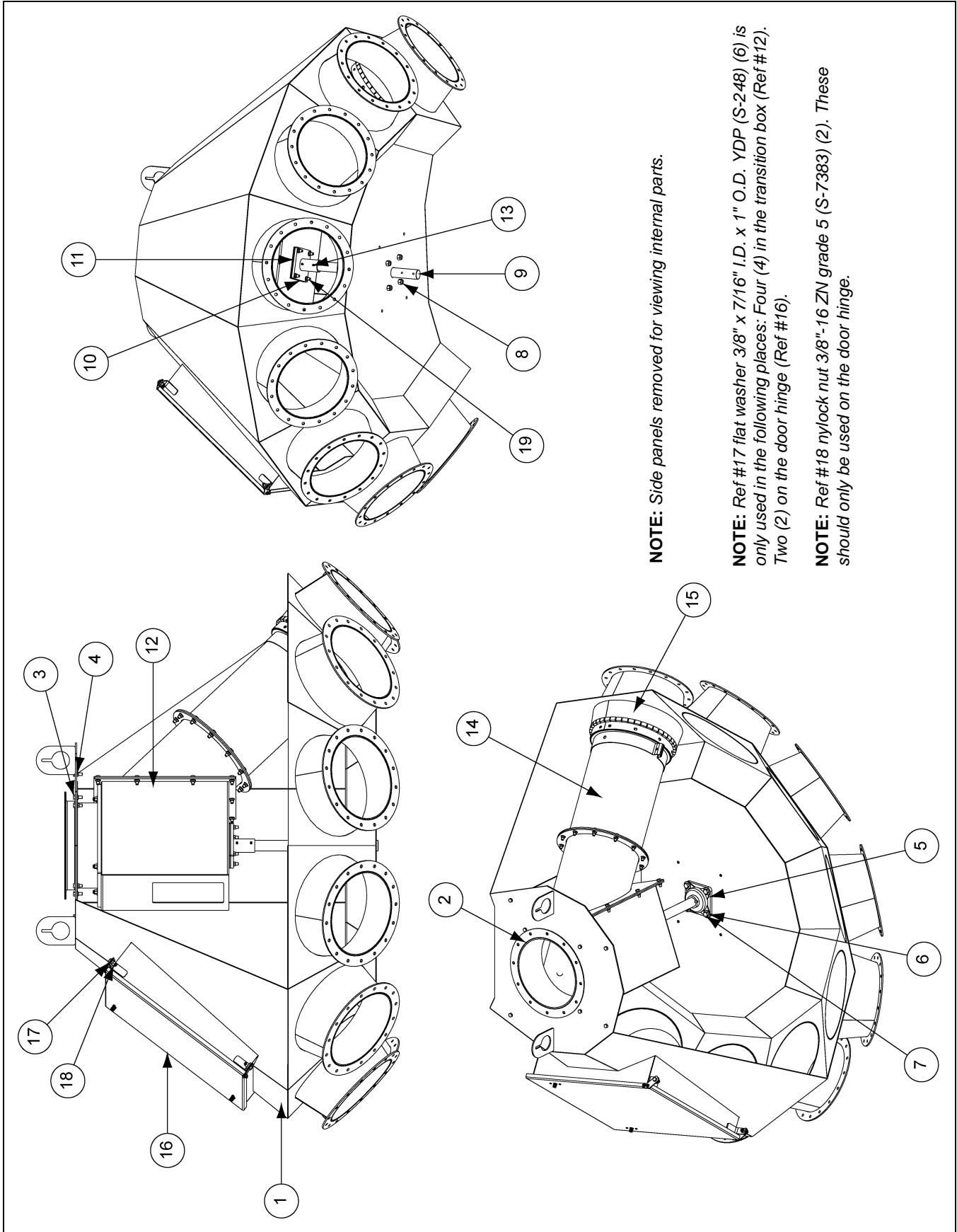
12" 6 Hole, 45° Distributor Assembly (DFB12645G)



12" 6 Hole, 45° Distributor Assembly (DFB12645G) Parts List

| Ref # | Part # | Description | Qty |
|-------|------------|---|-----|
| 1 | DFB0147G | 12" 6 Hole Body Weldment Distributor | 1 |
| 2 | DFB0136 | 12" Inlet Sleeve Weldment Distributor | 1 |
| 3 | S-7469 | Bolt, HHCS 3/8"-16 x 1" ZN Grade 5 | 22 |
| 4 | S-968 | Flange Nut 3/8"-16 ZN Grade 5 Wide Flange | 24 |
| 5 | KD-PBA0003 | Bearing, 1-1/2" 4 Bolt | 1 |
| 6 | S-2120 | Flat Washer 1/2" SAE ZN | 4 |
| 7 | S-8760 | Bolt, HHCS 1/2"-13 x 1-1/2" ZN Grade 5 | 4 |
| 8 | S-8260 | Nylock Nut 1/2"-13 ZN Grade 5 | 4 |
| 9 | DFB0158 | Index Shaft 12" 6 Hole Distributor | 1 |
| 10 | DFB0040 | Transition Box Support Weldment | 1 |
| 11 | DFB0043 | Plate, Transition Box Spacer | 2 |
| 12 | DFB0114 | 12" Transition Box with Liner | 1 |
| 13 | S-9288 | Spring Pin 1/4" x 2-1/2" Plain Steel Slotted Rolled | 3 |
| 14 | DFB0159 | 12" 6 Hole Transition Tube Extension Weldment | 1 |
| 15 | DFB0127 | Brush/Mount Assembly - 12" | 1 |
| 16 | DFB0146G | Door/Hinge Bracket Assembly 12" | 1 |
| 17 | S-248 | Flat Washer 3/8" x 7/16" I.D. x 1" O.D. YDP | 6 |
| 18 | S-7383 | Nylock Nut 3/8"-16 ZN Grade 5 | 2 |
| 19 | S-7515 | Bolt, HHCS 3/8"-16 x 1-1/2" Grade 5 | 4 |

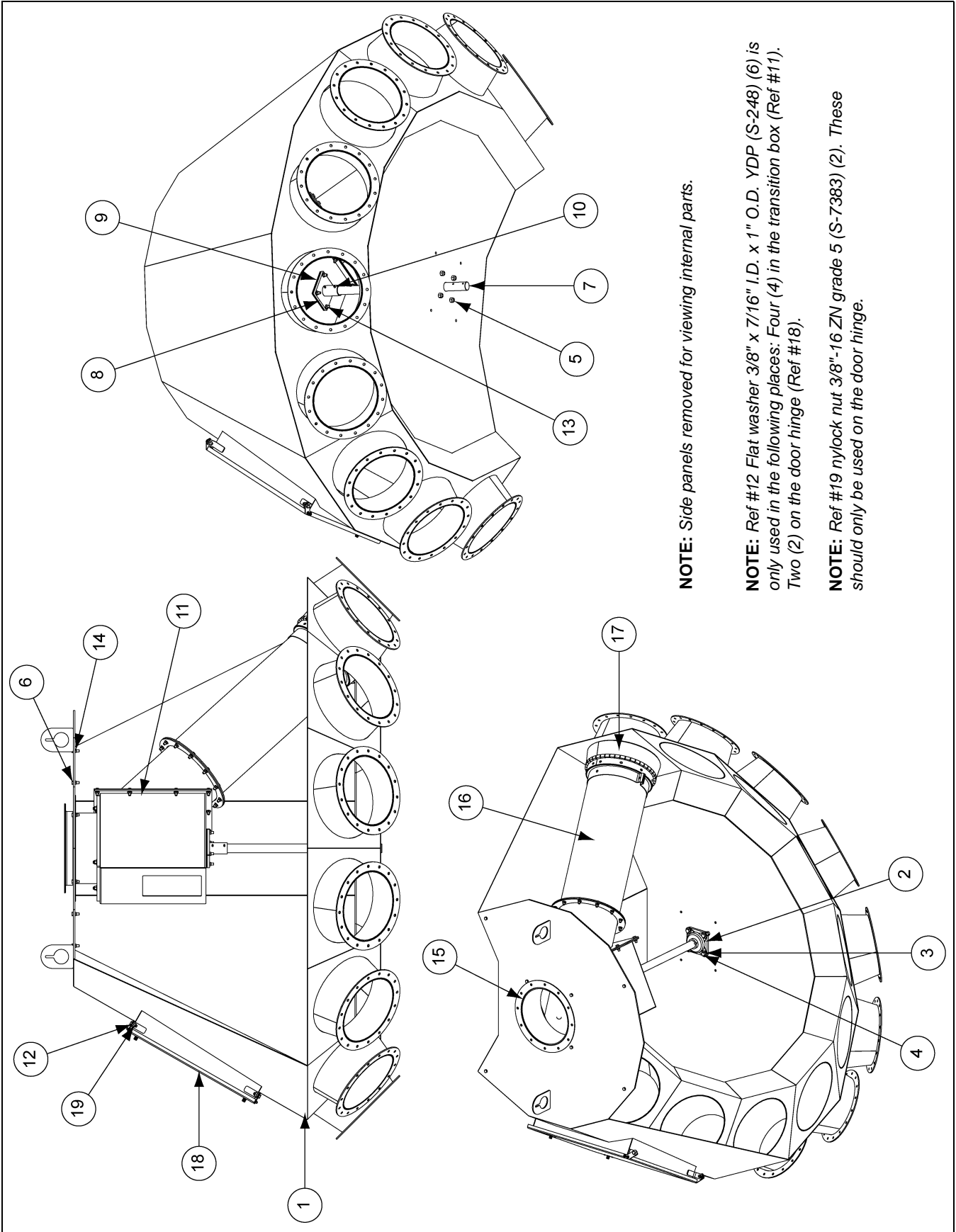
12" 8 Hole, 45° Distributor Assembly (DFB12845G)



12" 8 Hole, 45° Distributor Assembly (DFB12845G) Parts List

| Ref # | Part # | Description | Qty |
|-------|------------|---|-----|
| 1 | DFB0100G | 12" 8 Hole Body Weldment Distributor | 1 |
| 2 | DFB0136 | 12" Inlet Sleeve Weldment Distributor | 1 |
| 3 | S-7469 | Bolt, HHCS 3/8"-16 x 1" ZN Grade 5 | 22 |
| 4 | S-968 | Flange Nut 3/8"-16 ZN Grade 5 Wide Flange | 24 |
| 5 | KD-PBA0003 | Bearing, 1-1/2" 4 Bolt | 1 |
| 6 | S-2120 | Flat Washer 1/2" SAE ZN | 4 |
| 7 | S-8760 | Bolt, HHCS 1/2"-13 x 1-1/2" ZN Grade 5 | 4 |
| 8 | S-8260 | Nylock Nut 1/2"-13 ZN Grade 5 | 4 |
| 9 | DFB0145 | Index Shaft 12" 8 Hole Distributor | 1 |
| 10 | DFB0040 | Transition Box Support Weldment | 1 |
| 11 | DFB0043 | Plate, Transition Box Spacer | 2 |
| 12 | DFB0114 | 12" Transition Box with Liner | 1 |
| 13 | S-9288 | Spring Pin 1/4" x 2-1/2" Plain Steel Slotted Rolled | 3 |
| 14 | DFB0125 | 12" 8 Hole Transition Tube Extension Weldment | 1 |
| 15 | DFB0127 | Brush/Mount Assembly - 12" | 1 |
| 16 | DFB0146G | Door/Hinge Bracket Assembly 12" | 1 |
| 17 | S-248 | Flat Washer 3/8" x 7/16" I.D. x 1" O.D. YDP | 6 |
| 18 | S-7383 | Nylock Nut 3/8"-16 ZN Grade 5 | 2 |
| 19 | S-7515 | Bolt, HHCS 3/8"-16 x 1-1/2" Grade 5 | 4 |

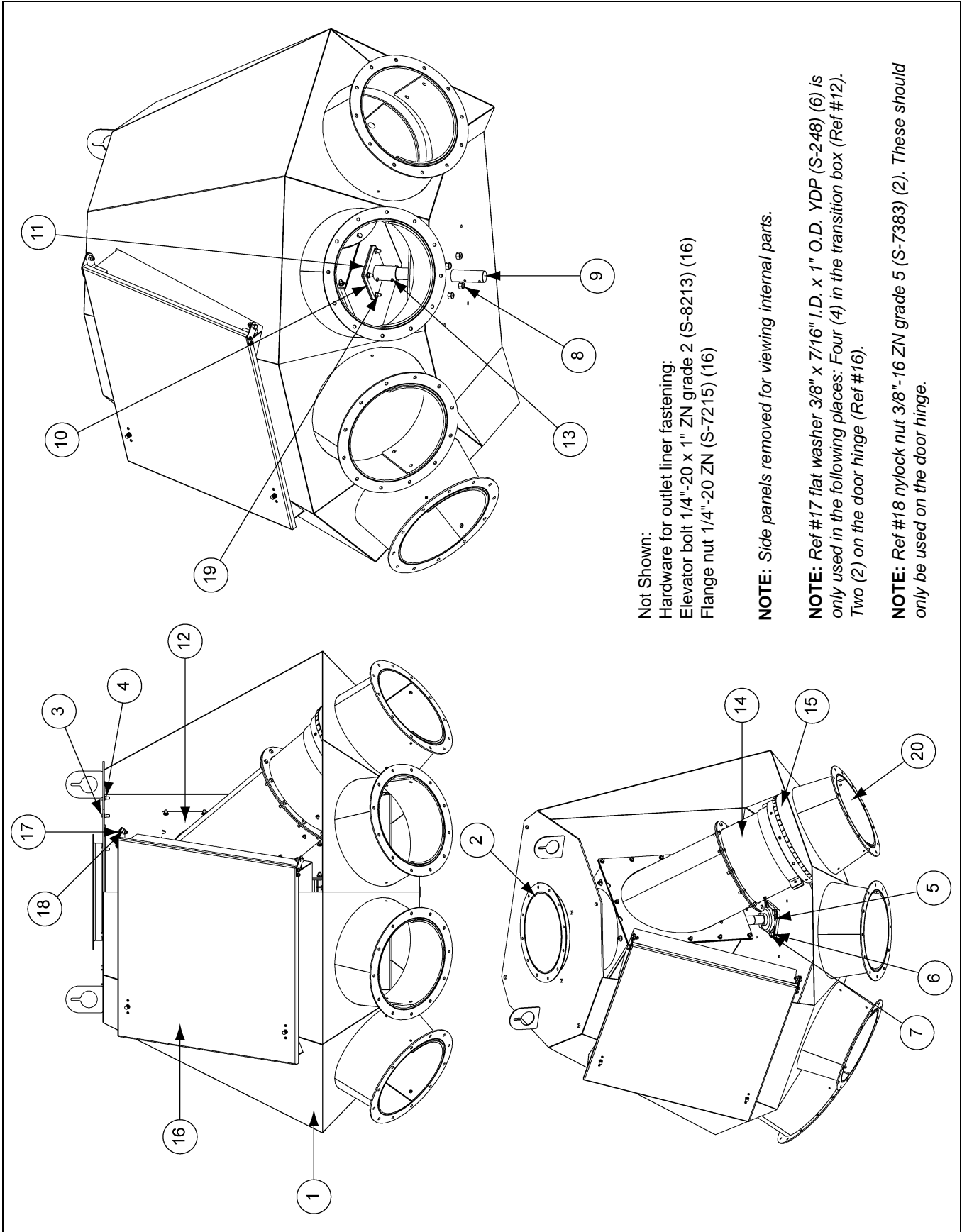
12" 10 Hole, 45° Distributor Assembly (DFB121045G)



12" 10 Hole, 45° Distributor Assembly (DFB121045G) Parts List

| Ref # | Part # | Description | Qty |
|-------|------------|---|-----|
| 1 | DFB0331G | 12" 10 Hole Body Weldment Distributor | 1 |
| 2 | KD-PBA0003 | Bearing, 1-1/2" 4 Bolt | 1 |
| 3 | S-2120 | Flat Washer 1/2" SAE ZN | 4 |
| 4 | S-8760 | Bolt, HHCS 1/2"-13 x 1-1/2" ZN Grade 5 | 4 |
| 5 | S-8260 | Nylock Nut 1/2"-13 ZN Grade 5 | 4 |
| 6 | S-7469 | Bolt, HHCS 3/8"-16 x 1" ZN Grade 5 | 22 |
| 7 | DFB0344 | Index Shaft 12" 10 Hole Distributor | 1 |
| 8 | DFB0040 | Transition Box Support Weldment | 1 |
| 9 | DFB0043 | Plate, Transition Box Spacer | 2 |
| 10 | S-9288 | Spring Pin 1/4" x 2-1/2" Plain Steel Slotted Rolled | 3 |
| 11 | DFB0114 | 12" Transition Box with Liner | 1 |
| 12 | S-248 | Flat Washer 3/8" x 7/16" I.D. x 1" O.D. YDP | 6 |
| 13 | S-7515 | Bolt, HHCS 3/8"-16 x 1-1/2" Grade 5 | 4 |
| 14 | S-968 | Flange Nut 3/8"-16 ZN Grade 5 Wide Flange | 24 |
| 15 | DFB0136 | 12" Inlet Sleeve Weldment Distributor | 1 |
| 16 | DFB0345 | 12" 10 Hole Transition Tube Extension Weldment | 1 |
| 17 | DFB0127 | Brush/Mount Assembly - 12" | 1 |
| 18 | DFB0146G | Door/Hinge Bracket Assembly 12" | 1 |
| 19 | S-7383 | Nylock Nut 3/8"-16 ZN Grade 5 | 2 |

14" 4 Hole, 45° Distributor Assembly (DFB14445G)



Not Shown:
 Hardware for outlet liner fastening:
 Elevator bolt 1/4"-20 x 1" ZN grade 2 (S-8213) (16)
 Flange nut 1/4"-20 ZN (S-7215) (16)

NOTE: Side panels removed for viewing internal parts.

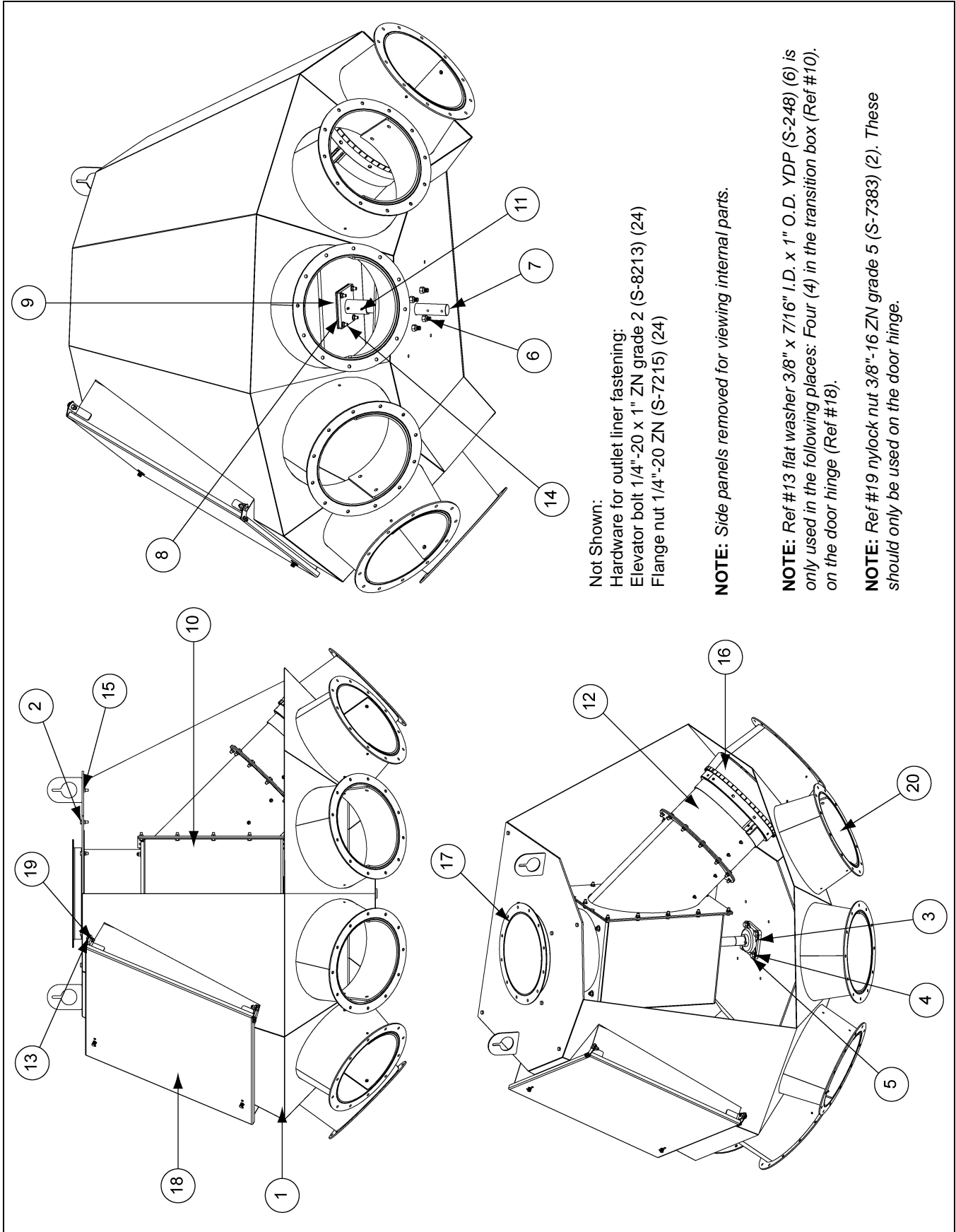
NOTE: Ref #17 flat washer 3/8" x 7/16" I.D. x 1" O.D. YDP (S-248) (6) is only used in the following places: Four (4) in the transition box (Ref #12). Two (2) on the door hinge (Ref #16).

NOTE: Ref #18 nylock nut 3/8"-16 ZN grade 5 (S-7383) (2). These should only be used on the door hinge.

14" 4 Hole, 45° Distributor Assembly (DFB14445G) Parts List

| Ref # | Part # | Description | Qty |
|-------|------------|---|-----|
| 1 | DFB0315G | 14" 4 Hole Body Weldment Distributor | 1 |
| 2 | DFB0313 | Inlet Sleeve Weldment | 1 |
| 3 | S-7469 | Bolt, HHCS 3/8"-16 x 1" ZN Grade 5 | 22 |
| 4 | S-968 | Flange Nut 3/8"-16 ZN Grade 5 Wide Flange | 24 |
| 5 | KD-PBA0003 | Bearing, 1-1/2" 4 Bolt | 1 |
| 6 | S-2120 | Flat Washer 1/2" SAE ZN | 4 |
| 7 | S-8760 | Bolt, HHCS 1/2"-13 x 1-1/2" ZN Grade 5 | 4 |
| 8 | S-8260 | Nylock Nut 1/2"-13 ZN Grade 5 | 4 |
| 9 | DFB0326 | Index Shaft 14" 4 Hole Distributor | 1 |
| 10 | DFB0040 | Transition Box Support Weldment | 1 |
| 11 | DFB0043 | Plate, Transition Box Spacer | 2 |
| 12 | DFB0261 | 14" Transition Box with Liner | 1 |
| 13 | S-9288 | Spring Pin 1/4" x 2-1/2" Plain Steel Slotted Rolled | 3 |
| 14 | DFB0327 | 14" 4 Hole Transition Extension Tube Assembly | 1 |
| 15 | DFB0274 | Brush/Mount Assembly - 14" | 1 |
| 16 | DFB0288P | Door/Hinge Bracket Assembly 14" | 1 |
| 17 | S-248 | Flat Washer 3/8" x 7/16" I.D. x 1" O.D. YDP | 6 |
| 18 | S-7383 | Nylock Nut 3/8"-16 ZN Grade 5 | 2 |
| 19 | S-7515 | Bolt, HHCS 3/8"-16 x 1-1/2" Grade 5 | 4 |
| 20 | DFB0296 | Outlet Cone Liner 14" Distributor | 4 |

14" 6 Hole, 45° Distributor Assembly (DFB14645G)



Not Shown:
 Hardware for outlet liner fastening:
 Elevator bolt 1/4"-20 x 1" ZN grade 2 (S-8213) (24)
 Flange nut 1/4"-20 ZN (S-7215) (24)

NOTE: Side panels removed for viewing internal parts.

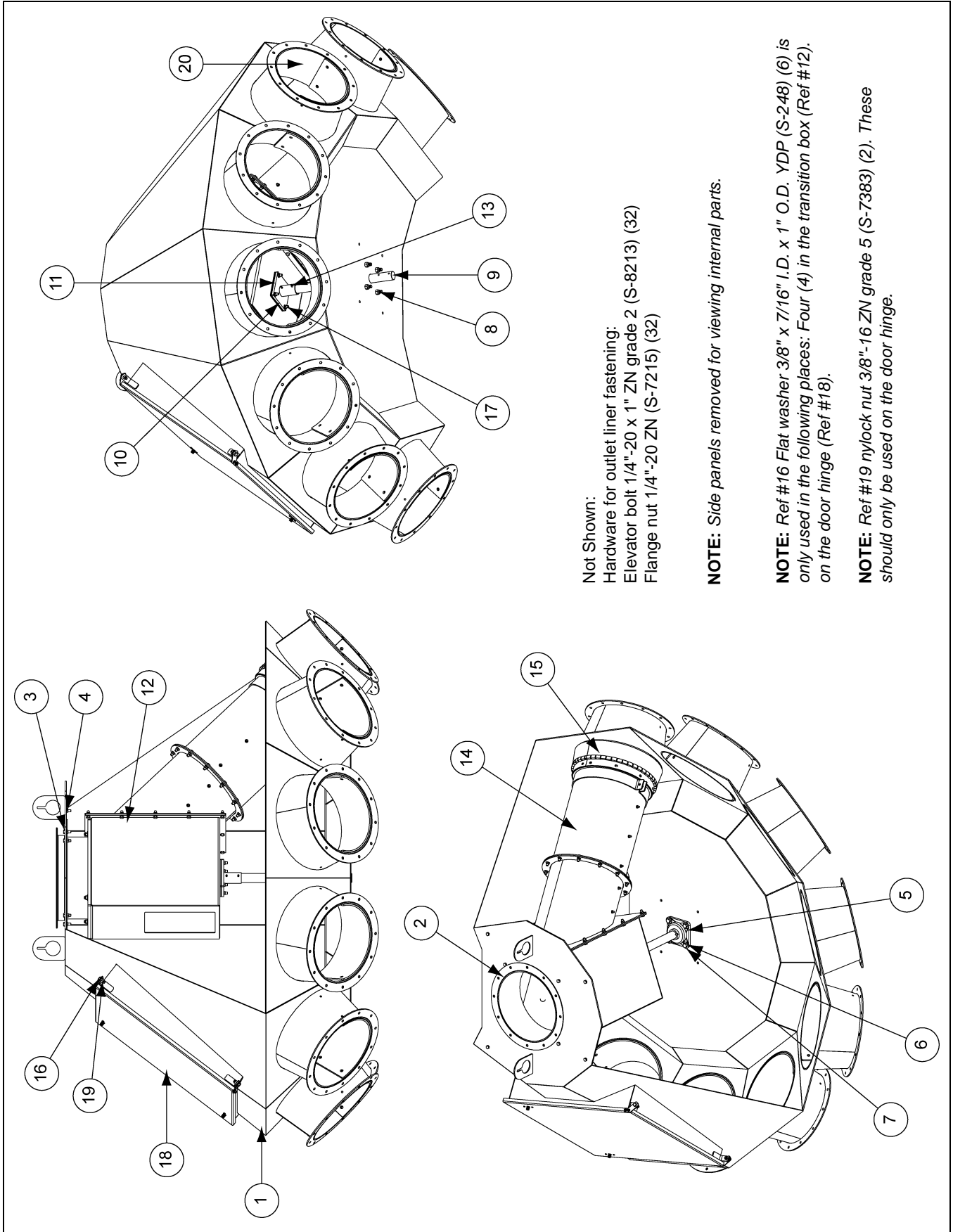
NOTE: Ref #13 flat washer 3/8" x 7/16" I.D. x 1" O.D. YDP (S-248) (6) is only used in the following places: Four (4) in the transition box (Ref #10) on the door hinge (Ref #18).

NOTE: Ref #19 nylock nut 3/8"-16 ZN grade 5 (S-7383) (2). These should only be used on the door hinge.

14" 6 Hole, 45° Distributor Assembly (DFB14645G) Parts List

| Ref # | Part # | Description | Qty |
|-------|------------|---|-----|
| 1 | DFB0298G | 14" 6 Hole Body Weldment Distributor | 1 |
| 2 | S-7469 | Bolt, HHCS 3/8"-16 x 1" ZN Grade 5 | 22 |
| 3 | KD-PBA0003 | Bearing, 1-1/2" 4 Bolt | 1 |
| 4 | S-2120 | Flat Washer 1/2" SAE ZN | 4 |
| 5 | S-7811 | Bolt, HHCS 1/2"-13 x 2" ZN Grade 5 | 4 |
| 6 | S-8260 | Nylock Nut 1/2"-13 ZN Grade 5 | 4 |
| 7 | DFB0308 | Index Shaft 14" 6 Hole Distributor | 1 |
| 8 | DFB0040 | Transition Box Support Weldment | 1 |
| 9 | DFB0043 | Plate, Transition Box Spacer | 2 |
| 10 | DFB0261 | 14" Transition Box with Liner | 1 |
| 11 | S-9288 | Spring Pin 1/4" x 2-1/2" Plain Steel Slotted Rolled | 3 |
| 12 | DFB0312 | 14" 6 Hole Transition Extension Tube Assembly | 1 |
| 13 | S-248 | Flat Washer 3/8" x 7/16" I.D. x 1" O.D. YDP | 6 |
| 14 | S-7515 | Bolt, HHCS 3/8"-16 x 1-1/2" Grade 5 | 4 |
| 15 | S-968 | Flange Nut 3/8"-16 ZN Grade 5 Wide Flange | 24 |
| 16 | DFB0274 | Brush/Mount Assembly - 14" | 1 |
| 17 | DFB0313 | 14" 6 Hole Inlet Sleeve Weldment | 1 |
| 18 | DFB0288G | Door/Hinge Bracket Assembly 14" | 1 |
| 19 | S-7383 | Nylock Nut 3/8"-16 ZN Grade 5 | 2 |
| 20 | DFB0296 | Outlet Cone Liner 14" Distributor | 6 |

14" 8 Hole, 45° Distributor Assembly (DFB14845G)



Not Shown:

Hardware for outlet liner fastening:

Elevator bolt 1/4"-20 x 1" ZN grade 2 (S-8213) (32)

Flange nut 1/4"-20 ZN (S-7215) (32)

NOTE: Side panels removed for viewing internal parts.

NOTE: Ref #16 Flat washer 3/8" x 7/16" I.D. x 1" O.D. YDP (S-248) (6) is only used in the following places: Four (4) in the transition box (Ref #12), on the door hinge (Ref #18).

NOTE: Ref #19 nylock nut 3/8"-16 ZN grade 5 (S-7383) (2). These should only be used on the door hinge.

14" 8 Hole, 45° Distributor Assembly (DFB14845G) Parts List

| Ref # | Part # | Description | Qty |
|-------|------------|---|-----|
| 1 | DFB0246G | 14" 8 Hole Body Weldment Distributor | 1 |
| 2 | DFB0282 | 14" Inlet Sleeve Weldment Distributor | 1 |
| 3 | S-7469 | Bolt, HHCS 3/8"-16 x 1" ZN Grade 5 | 22 |
| 4 | S-968 | Flange Nut 3/8"-16 ZN Grade 5 Wide Flange | 24 |
| 5 | KD-PBA0003 | Bearing, 1-1/2" 4 Bolt | 1 |
| 6 | S-2120 | Flat Washer 1/2" SAE ZN | 4 |
| 7 | S-7811 | Bolt, HHCS 1/2"-13 x 2" ZN Grade 5 | 4 |
| 8 | S-8260 | Nylock Nut 1/2"-13 ZN Grade 5 | 4 |
| 9 | DFB0287 | Index Shaft 14" 8 Hole Distributor | 1 |
| 10 | DFB0040 | Transition Box Support Weldment | 1 |
| 11 | DFB0043 | Plate, Transition Box Spacer | 2 |
| 12 | DFB0261 | 14" Transition Box with Liner | 1 |
| 13 | S-9288 | Spring Pin 1/4" x 2-1/2" Plain Steel Slotted Rolled | 3 |
| 14 | DFB0293 | 14" 8 Hole Transition Extension Tube Assembly | 1 |
| 15 | DFB0274 | Brush/Mount Assembly - 14" | 1 |
| 16 | S-248 | Flat Washer 3/8" x 7/16" I.D. x 1" O.D. YDP | 6 |
| 17 | S-7515 | Bolt, HHCS 3/8"-16 x 1-1/2" Grade 5 | 4 |
| 18 | DFB0288G | Door/Hinge Bracket Assembly 14" | 1 |
| 19 | S-7383 | Nylock Nut 3/8"-16 ZN Grade 5 | 2 |
| 20 | DFB0296 | Outlet Cone Liner 14" Distributor | 8 |

NOTES

Limited Warranty — N.A. Grain Products

The GSI Group, LLC. ("GSI") warrants products which it manufactures, to be free of defects in materials and workmanship under normal usage and conditions for a period of 12 months from the date of shipment (or, if shipped by vessel, 14 months from the date of arrival at the port of discharge). If, in GSI's sole judgment, a product is found to have a defect in materials and/or workmanship, GSI will, at its own option and expense, repair or replace the product or refund the purchase price. This Limited Warranty is subject to extension and other terms as set forth below.

Warranty Enhancements: The warranty period for the following products is enhanced as shown below and is in lieu of (and not in addition to) the above stated warranty period. (Warranty Period is from date of shipment.)

| | Product | Warranty Period |
|--------------------------|---|-----------------|
| Storage | Grain Bin Structural Design • Sidewall, roof, doors, platforms and walkarounds • Flooring (when installed using GSI specified floor support system for that floor) • Hopper tanks (BFT, GHT, NCHT, and FCHT) | 5 Years |
| Conditioning | Dryer Structural Design – (Tower, Portable and TopDry) • Includes (frame, portable dryer screens, ladders, access doors and platforms) | 5 Years |
| | All other Dryer parts including: • Electrical (controls, sensors, switches and internal wiring) | 2 Years |
| | All Non-PTO Driven Centrifugal and Axial Fans | 3 Years |
| | Bullseye Controllers | 2 Years |
| Material Handling | Bucket Elevators Structural Design | 5 Years |
| | Towers Structural Design | 5 Years |
| | Catwalks Structural Design | 5 Years |
| | Accessories (stairs, ladders and platforms) Structural Design | 5 Years |

Conditions and Limitations:

THERE ARE NO WARRANTIES THAT EXTEND BEYOND THE LIMITED WARRANTY DESCRIPTION SET FORTH HEREIN; SPECIFICALLY, GSI DISCLAIMS ANY AND ALL OTHER WARRANTIES OF ANY KIND, EXPRESS OR IMPLIED, INCLUDING, WITHOUT LIMITATION, WARRANTIES OF MERCHANTABILITY OR FITNESS FOR A PARTICULAR PURPOSE OR USE IN CONNECTION WITH: (I) ANY PRODUCT MANUFACTURED OR SOLD BY GSI, OR (II) ANY ADVICE, INSTRUCTION, RECOMMENDATION OR SUGGESTION PROVIDED BY AN AGENT, REPRESENTATIVE OR EMPLOYEE OF GSI REGARDING OR RELATED TO THE CONFIGURATION, INSTALLATION, LAYOUT, SUITABILITY FOR A PARTICULAR PURPOSE, OR DESIGN OF SUCH PRODUCTS.

The sole and exclusive remedy for any claimant is set forth in this Limited Warranty and shall not exceed the amount paid for the product purchased. This Warranty only covers the value of the warranted parts and equipment, and does not cover labor charges for removing or installing defective parts, shipping charges with respect to such parts, any applicable sales or other taxes, or any other charges or expenses not specified in this Warranty. GSI shall not be liable for any other direct, indirect, incidental or consequential damages, including, without limitation, loss of anticipated profits or benefits. Expenses incurred by or on behalf of a claimant without prior written authorization from the GSI warranty department shall not be reimbursed. This warranty is not transferable and applies only to the original end-user. GSI shall have no obligation or responsibility for any representations or warranties made by or on behalf of any dealer, agent or distributor. Prior to installation, the end-user bears all responsibility to comply with federal, state and local codes which apply to the location and installation of the products.

This Limited Warranty extends solely to products sold by GSI and does not cover any parts, components or materials used in conjunction with the product, that are not sold by GSI. GSI assumes no responsibility for claims resulting from construction defects, unauthorized modifications, corrosion or other cosmetic issues caused by storage, application or environmental conditions. Modifications to products not specifically delineated in the manual accompanying the product at initial sale will void all warranties. This Limited Warranty shall not extend to products or parts which have been damaged by negligent use, misuse, alteration, accident or which have been improperly/inadequately maintained.

Notice Procedure:

In order to make a valid warranty claim a written notice of the claim must be submitted, using the RMA form, within 60 days of discovery of a warrantable nonconformance. The RMA form is found on the OneGSI portal.

Service Parts:

GSI warrants, subject to all other conditions described in this Warranty, Service Parts which it manufactures for a period of 12 months from the date of purchase unless specified in Enhancements above.

This equipment shall be installed in accordance with the current installation codes and applicable regulations, which should be carefully followed in all cases. Authorities having jurisdiction should be consulted before installations are made.



**1004 E. Illinois St.
Assumption, IL 62510-0020
Phone: 1-217-226-4421
Fax: 1-217-226-4420
www.gsiag.com**



GSI is a worldwide brand of AGCO Corporation.