

# Distributor Cable Control

## Installation Manual

PNEG-971

Version: 2.1

Date: **12-21-20**



PNEG-971

## Equipment Information

Use of the Equipment Information page will help you identify your equipment in the case that you need call your dealer or installer. This information should be filled out and kept on record.

Model #: \_\_\_\_\_

Date Purchased: \_\_\_\_\_

Serial #: \_\_\_\_\_

Dealer name and phone #: \_\_\_\_\_

RPM: \_\_\_\_\_

\_\_\_\_\_

Head Pulley Dia.: \_\_\_\_\_

\_\_\_\_\_

Discharge Height: \_\_\_\_\_

\_\_\_\_\_

Horsepower: \_\_\_\_\_

Spout Dia.: \_\_\_\_\_

# of Spouts: \_\_\_\_\_

**All information, illustrations, photos and specifications in this manual are based on the latest information available at the time of publication. The right is reserved to make changes at any time without notice.**

---

## Contents

|   |           |
|---|-----------|
| <b>Chapter 1 Introduction .....</b>                     | <b>4</b>  |
| <b>Chapter 2 Safety .....</b>                           | <b>5</b>  |
| Safety Guidelines .....                                 | 5         |
| Cautionary Symbols Definitions .....                    | 6         |
| Safety Cautions .....                                   | 7         |
| Safety Sign-Off Sheet .....                             | 9         |
| <b>Chapter 3 Decal Locations .....</b>                  | <b>10</b> |
| <b>Chapter 4 Part Identification .....</b>              | <b>11</b> |
| <b>Chapter 5 Installation .....</b>                     | <b>12</b> |
| Installation of Cable Wheel and Coupler Connector ..... | 12        |
| Connector Pulley Assembly .....                         | 14        |
| Cable Guide Assembly .....                              | 15        |
| Upper Cable Guide Assembly .....                        | 16        |
| Control Handle Installation .....                       | 17        |
| Lower Cable Wheel Assembly .....                        | 18        |
| Cable Guides .....                                      | 19        |
| Cable Guides .....                                      | 20        |
| <b>Chapter 6 Warranty .....</b>                         | <b>21</b> |

## 1. Introduction

---

Thank you for choosing this product. It is designed to give excellent performance and service for many years.

This manual covers general information on the distributor cable control installation. Due to the wide variety of field conditions we cannot cover every aspect of installation. We offer one method for installing equipment but, rely on your qualified contractor's experience and techniques. Some conditions and surroundings do not allow certain practices during the installation of equipment. We can not be responsible for the installation of the distributor and accessories. We encourage anyone installing, or maintaining this equipment to thoroughly read this manual before proceeding.

The company is the vendor of the distributor and certain of its optional accessories only, and does not assume responsibility for the installation. The installation recommendations contained within this manual are for consideration only.

READ THIS MANUAL carefully to learn how to properly use and install this equipment. Failure to do so could result in personal injury or equipment damage.

INSPECT the shipment immediately upon arrival. The Customer is responsible for ensuring that all quantities are correct. Report any damage or shortages by recording a detailed description on the Bill of Lading to justify the Customer's claim from the Transport Firm. Our responsibility for damage to the equipment ends with acceptance by the delivering carrier. Save all paperwork and documentation furnished with any of the equipment.

THIS MANUAL SHOULD BE CONSIDERED a permanent part of your equipment and should be easily accessible when needed.

A WARRANTY is provided as part of the company's support program for customers who use and maintain their equipment as described in the manual. The warranty is explained on the warranty page located on the inside back cover of this manual.

This warranty provides you the assurance that the company will back its products where defects appear within the warranty period. In some circumstances, the company also provides field improvements, often without charge to the customer, even if the product is out of warranty. Should the equipment be abused, or modified to change its performance beyond the factory specifications, the warranty will become void and field improvements may be denied.

---

## **Safety Guidelines**

Safety guidelines are general-to-specific safety rules that must be followed at all times. This manual is written to help you understand safe operating procedures and problems that can be encountered by the operator and other personnel when using this equipment. Save these safety guidelines for future reference.

As owner or operator, you are responsible for understanding the requirements, hazards, and precautions that exist and to inform others as required. Unqualified persons must stay out of the work area at all times.

Alterations must not be made to the equipment. Alterations can produce dangerous situations resulting in **SERIOUS INJURY** or **DEATH**.

This equipment must be installed in accordance with the current installation codes and applicable regulations, which should be carefully followed in all cases. Authorities having jurisdiction must be consulted before installations are made.

When necessary, you must consider the installation location relative to electrical, fuel and water utilities.

Personnel operating or working around equipment must read this manual. This manual must be delivered with equipment to its owner. Failure to read this manual and its safety instructions is a misuse of the equipment.

**ST-0001-2**

### Cautionary Symbols Definitions

Cautionary symbols appear in this manual and on product decals. The symbols alert the user of potential safety hazards, prohibited activities and mandatory actions. To help you recognize this information, we use the symbols that are defined below.



This symbol indicates an imminently hazardous situation which, if not avoided, **will result in serious injury or death.**



This symbol indicates a potentially hazardous situation which, if not avoided, **may result in serious injury or death.**



This symbol indicates a potentially hazardous situation which, if not avoided, **may result in minor or moderate injury.**



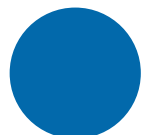
This symbol is used to address practices not related to personal injury.



This symbol indicates a general hazard.



This symbol indicates a prohibited activity.



This symbol indicates a mandatory action.

ST-0005

## Safety Cautions

### Use Personal Protective Equipment

- Use appropriate personal protective equipment:

**Eye Protection**



**Respiratory Protection**



**Foot Protection**



**Hearing Protection**



**Head Protection**



**Fall Protection**



**Hand Protection**



- Wear clothing appropriate to the job.
- Remove all jewelry.
- Tie long hair up and back.

ST-0004-1

### Follow Safety Instructions

- Carefully read all safety messages in this manual and safety signs on your machine. Keep signs in good condition. Replace missing or damaged safety signs. Be sure new equipment components and repair parts include the current safety signs. Replacement safety signs are available from the manufacturer.
- Learn how to operate the machine and how to use controls properly. Do not let anyone operate without instruction.
- If you do not understand any part of this manual or need assistance, contact your dealer.



ST-0002-1

## 2. Safety

### Maintain Equipment and Work Area

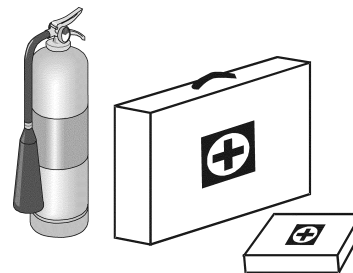
- Understand service procedures before doing work. Keep area clean and dry.
- Never service equipment while it is operating. Keep hands, feet, and clothing away from moving parts
- Keep your equipment in proper working condition. Replace worn or broken parts immediately.



ST-0003-1

### Prepare for Emergencies

- Be prepared if fire starts.
- Keep a first aid kit and fire extinguisher handy.
- Keep emergency numbers for doctors, ambulance service, hospital, and fire department near your telephone.



**Keep Emergency Equipment  
Quickly Accessible**

## Safety Sign-Off Sheet

Below is a sign-off sheet that can be used to verify that all personnel have read and understood the safety instructions. This sign-off sheet is provided for your convenience and personal record keeping.

[illegible]

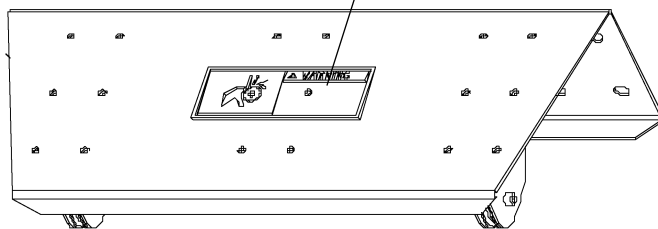
**ST-0007**

### 3. Decal Locations

Install safety decals on components as *shown below*. Always insure that safety decals are in place and in good condition. If a decal cannot be easily read for any reason or has been painted over, replace it immediately. Contact your dealer or the manufacturer to order a replacement decal free of charge.

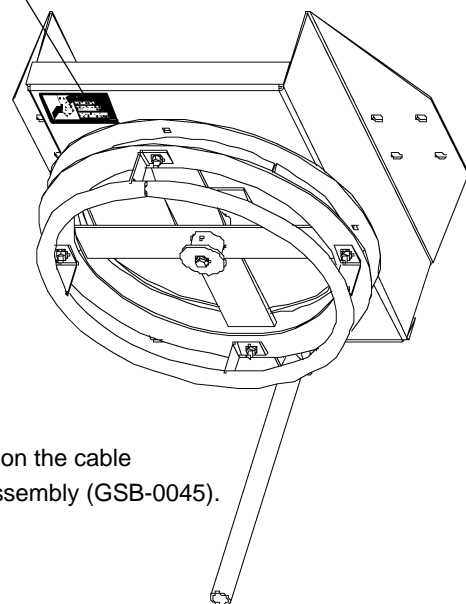


**DC-857**



**DC-857**

Located on the cable  
guide assembly (GSB-0007).



**DC-857**

Located on the cable  
wheel assembly (GSB-0045).

**NOTE:** Cable is not supplied with cable control. 3/16" Aircraft cable is recommended.

| 6", 8" and 10" Distributors (GSB-DCG) |                                      |     |
|---------------------------------------|--------------------------------------|-----|
| Part #                                | Description                          | Qty |
| GSB-0006                              | Spacer, Bottom Guide                 | 1   |
| GSB-0007                              | Cable Guide Assembly, Top            | 1   |
| GSB-0015                              | Cable Wheel Weldment, Top            | 1   |
| GSB-0049                              | Cable Wheel Assembly, Bottom         | 1   |
| GSB-0030                              | Control Handle                       | 1   |
| GSB-0031                              | Control Handle Brackets              | 2   |
| GSB-0037                              | Coupler Connector Weldment           | 1   |
| GSB-0045                              | Connector Pulley Assembly            | 1   |
| GSB-DCG-HDW                           | Hardware, Distributors Cable Control | 1   |

| 12" and 14" Distributors (GSB-DCG-1) |                                      |     |
|--------------------------------------|--------------------------------------|-----|
| Part #                               | Description                          | Qty |
| GSB-0006                             | Spacer, Bottom Guide                 | 1   |
| GSB-0007                             | Cable Guide Assembly, Top            | 1   |
| GSB-0059                             | Cable Wheel Weldment, Top            | 1   |
| GSB-0049                             | Cable Wheel Assembly, Bottom         | 1   |
| GSB-0030                             | Control Handle                       | 1   |
| GSB-0031                             | Control Handle Brackets              | 2   |
| GSB-0052                             | Coupler Connector Weldment           | 1   |
| GSB-0045                             | Connector Pulley Assembly            | 1   |
| GSB-DCG-HDW                          | Hardware, Distributors Cable Control | 1   |

| Distributor Hardware (GSB-DCG-HDW) |                                  |     |
|------------------------------------|----------------------------------|-----|
| Part #                             | Description                      | Qty |
| S-8762                             | Clamp 3/16" Cable                | 8   |
| S-1146                             | Bolt HHCS 5/16-18 x 1 ZN Grade 2 | 6   |
| S-10268                            | Flange Nut 5/16" JS500 Grade 5   | 6   |
| S-3729                             | Hex Nut 1/2"-13 ZN YDP Grade 5   | 8   |
| S-7329                             | Bolt HHCS 5/16-18 x 2 ZN Grade 2 | 1   |
| S-7382                             | Nut Nylock 5/16-18 ZN Grade 5    | 1   |
| S-8268                             | Bolt HHCS 1/2-13 x 2 ZN Grade 8  | 8   |

| 10" Bucket Elevator (GSB-10DCG) |             |     |
|---------------------------------|-------------|-----|
| Part #                          | Description | Qty |
| GSB-10174                       | Clamp Band  | 4   |

| 16"-36" Bucket Elevator (1636 DCG) |                    |     |
|------------------------------------|--------------------|-----|
| Part #                             | Description        | Qty |
| DSP16002                           | Clamp Band         | 4   |
| DSP16005                           | Clamp Rod Weldment | 2   |

## 5. Installation

### Installation of Cable Wheel and Coupler Connector

Once the distributor has been installed the installation of the cable controls can begin. The first piece to install is the cable wheel (A). This cable wheel mounts to the control pipe (B) coming from the bottom of the distributor. This cable wheel needs to be placed on the pipe far enough not to interfere with the threads on the end of the distributor control pipe. (See Figure 5A.) Once the cable wheel is in the desired location, tighten the two (2) 3/8" set screws.

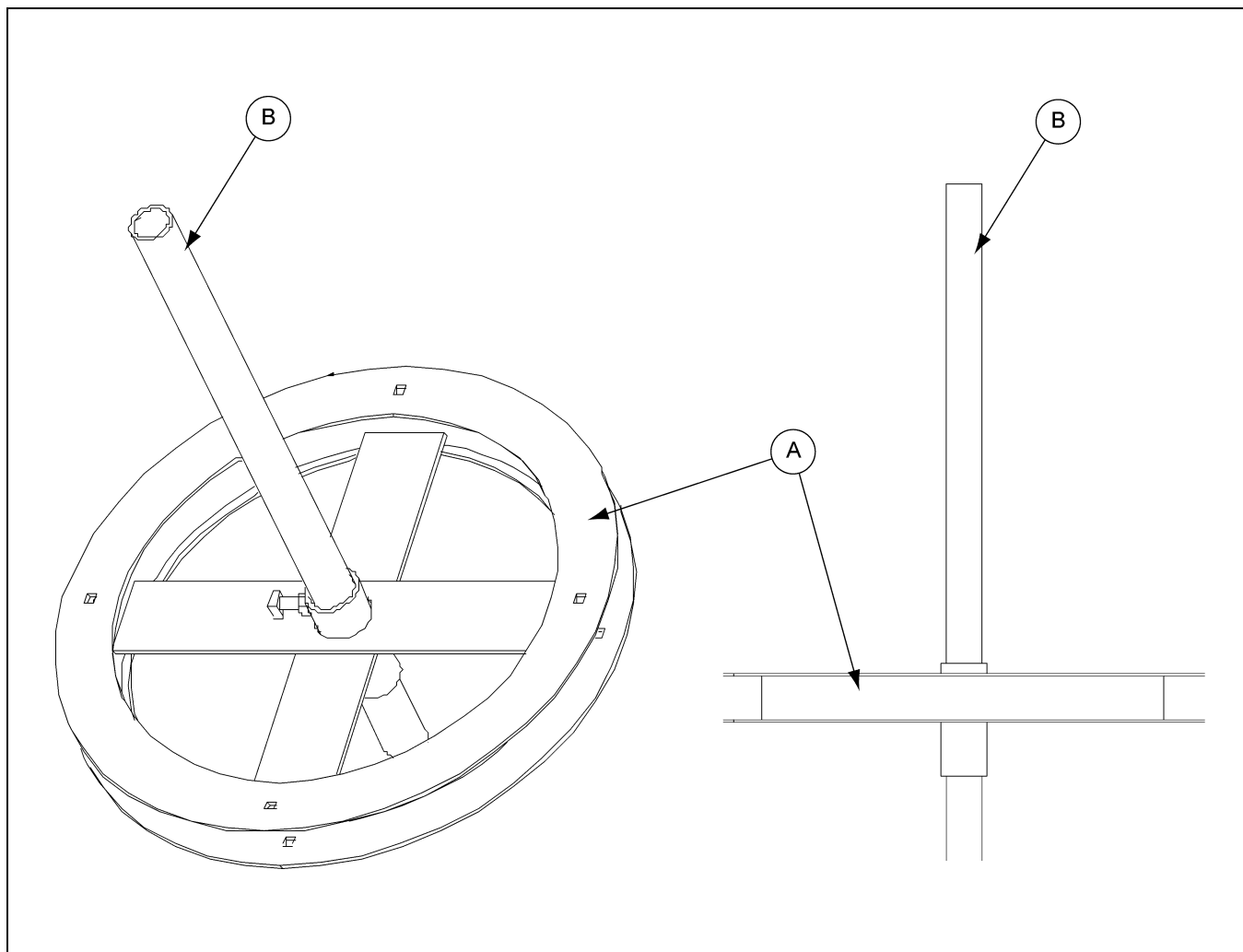
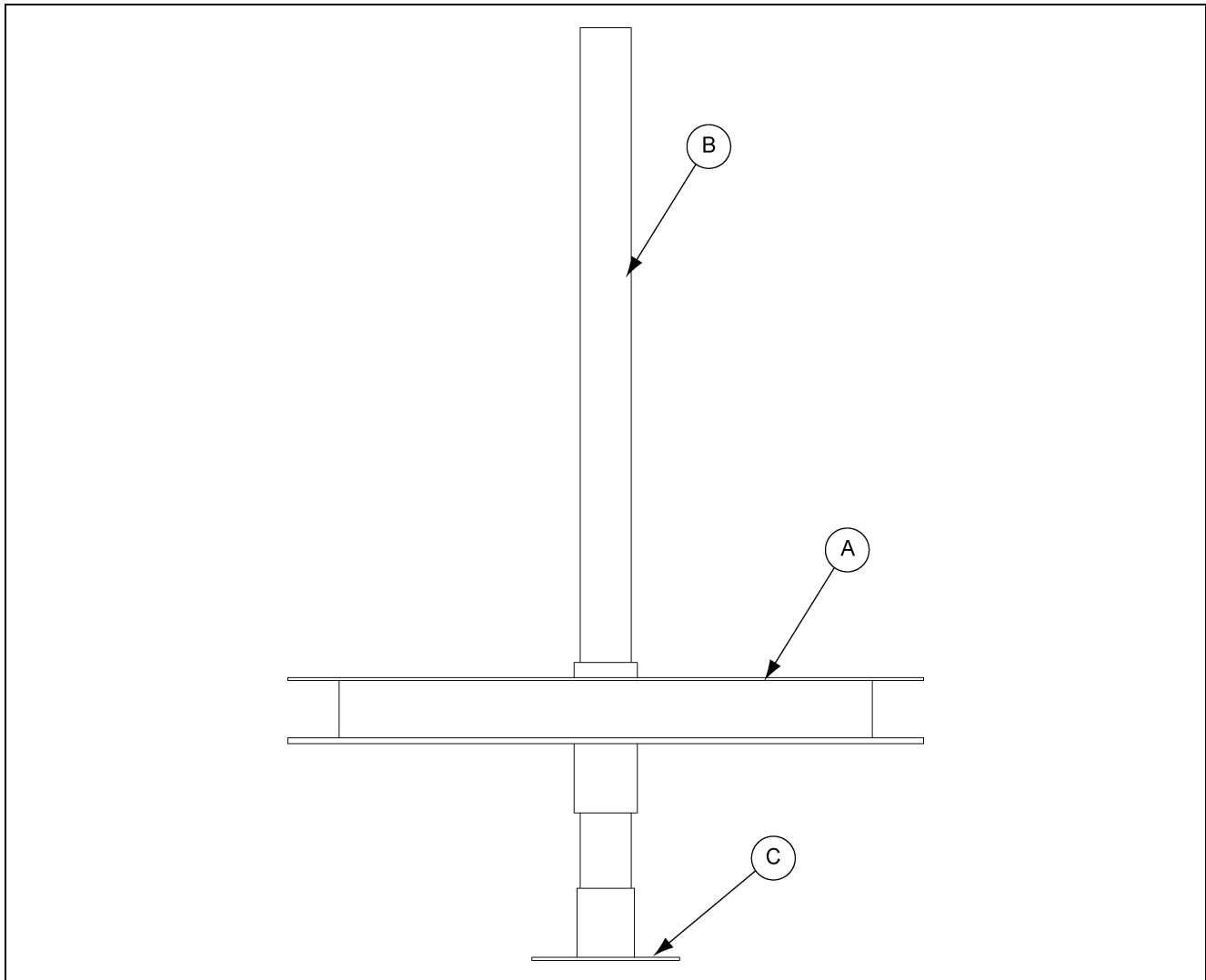


Figure 5A

| Ref # | Part #               | Description   |
|-------|----------------------|---|
| A     | GSB-0015<br>GSB-0059 | Cable Wheel<br>6", 8", and 10" Distributors<br>12" and 14" Distributors |
| B     |                      | Distributor Control Pipe  |

Once the top cable wheel (A) has been installed the next piece to assemble is the coupler connector weldment (C). This piece threads onto the threads of the distributor control pipe (B) as shown in [Figure 5B](#) below. Make sure the coupler connector weldment is secured to the distributor control pipe.

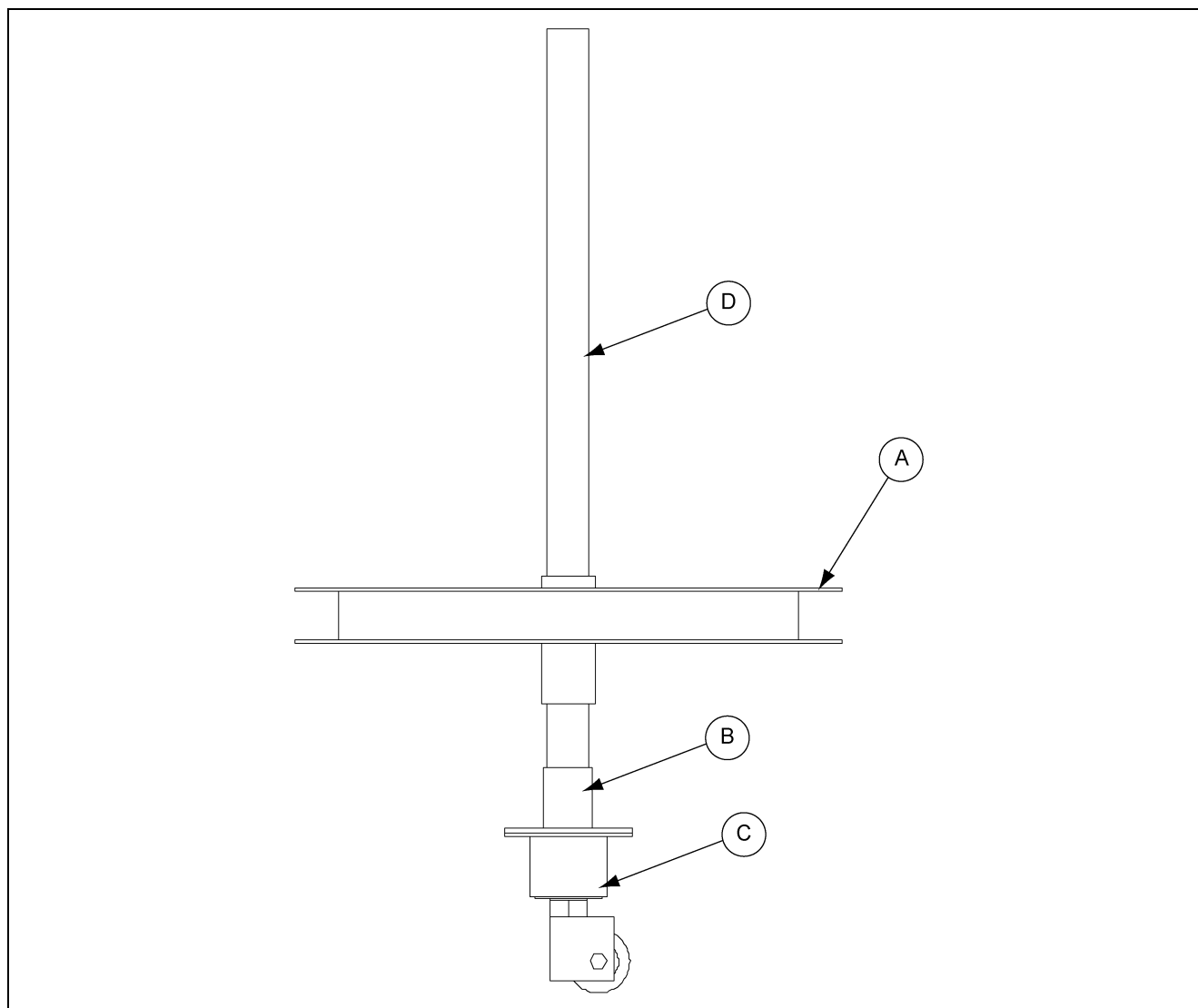


**Figure 5B**

| Ref # | Part #               | Description  |
|-------|----------------------|--|
| A     | GSB-0015<br>GSB-0059 | Top Cable Wheel Weldment<br>6", 8", and 10" Distributors<br>12" and 14" Distributors |
| B     |                      | Distributor Control Pipe   |
| C     | GSB-0037<br>GSB-0052 | Coupler Connector<br>6", 8", and 10" Distributors<br>12" and 14" Distributors        |

### Connector Pulley Assembly

The next piece to install is the connector pulley assembly (C). This piece mounts to the coupler connector weldment (B) as shown in [Figure 5C](#) below. These are fastened together using (2) 5/16" x 1" bolts and whiz nuts, supplied in the hardware package (GSB-DCG-HDW).



**Figure 5C**

| Ref # | Part #               | Description  |
|-------|----------------------|--|
| A     | GSB-0015<br>GSB-0059 | Top Cable Wheel Weldment<br>6", 8", and 10" Distributors<br>12" and 14" Distributors   |
| B     | GSB-0037<br>GSB-0052 | Coupler Connector Weldment<br>6", 8", and 10" Distributors<br>12" and 14" Distributors |
| C     | GSB-0045             | Connector Pulley Assembly  |
| D     |                      | Distributor Pipe Control   |

## Cable Guide Assembly

The next piece to install is the upper cable guide assembly (D). The cable guide assembly is installed on the trunking. The location on the trunking is determined by the height of the cable wheel (A). The cable must run in-line from the cable wheel to the sheaves in the cable guide assembly. This location is shown in [Figure 5D](#) below. For cable installation, [See Page 20](#).

**NOTE:** Cable is not supplied with cable control. The company recommends 3/16" aircraft cable.

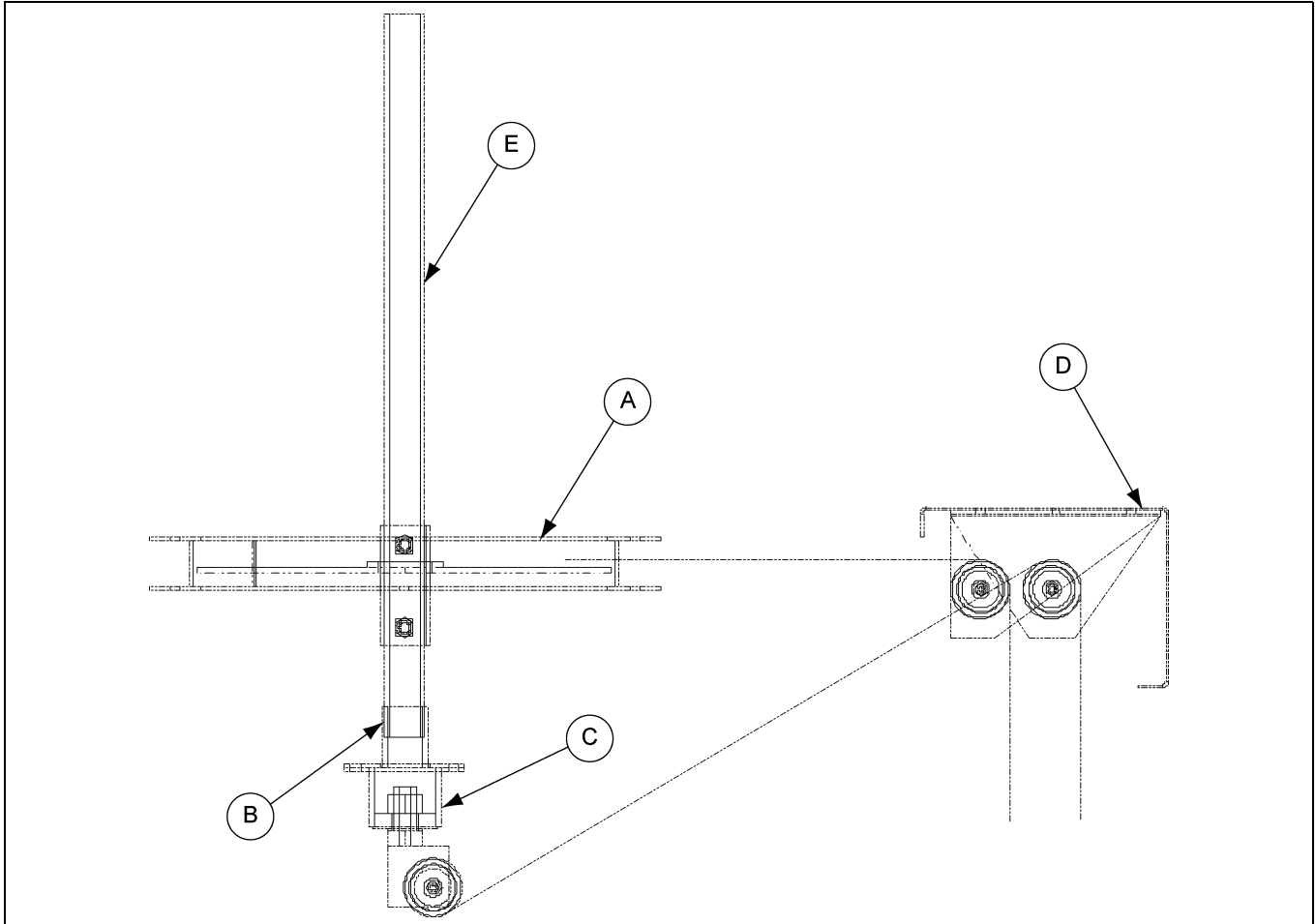


Figure 5D

| Ref # | Part #               | Description  |
|-------|----------------------|--|
| A     | GSB-0015<br>GSB-0059 | Top Cable Wheel Weldment<br>6", 8", and 10" Distributors<br>12" and 14" Distributors   |
| B     | GSB-0037<br>GSB-0052 | Coupler Connector Weldment<br>6", 8", and 10" Distributors<br>12" and 14" Distributors |
| C     | GSB-0045             | Connector Pulley Assembly  |
| D     | GSB-0007             | Upper Cable Guide Assembly   |
| E     |                      | Distributor Pipe Control   |

# Upper Cable Guide Assembly

Once the location of the upper cable guide assembly is determined it must be fastened to the trunking. The assembly of the clamp band (B) and upper cable guide assembly (A) is shown in the [Figure 5E](#) and [Figure 5F](#) below. The 1/2" x 2" bolts and nuts that fasten the clamp bands (E) to the upper cable guide assembly (D) are provide in the hardware package (GSB-DCG-HDW). These clamp bands (E) vary depending on what size leg you have. Refer to the [Table below](#) to see what clamp be used.

**NOTE:** Use caution when tightening hardware, Do not overtighten and collapse trunking.

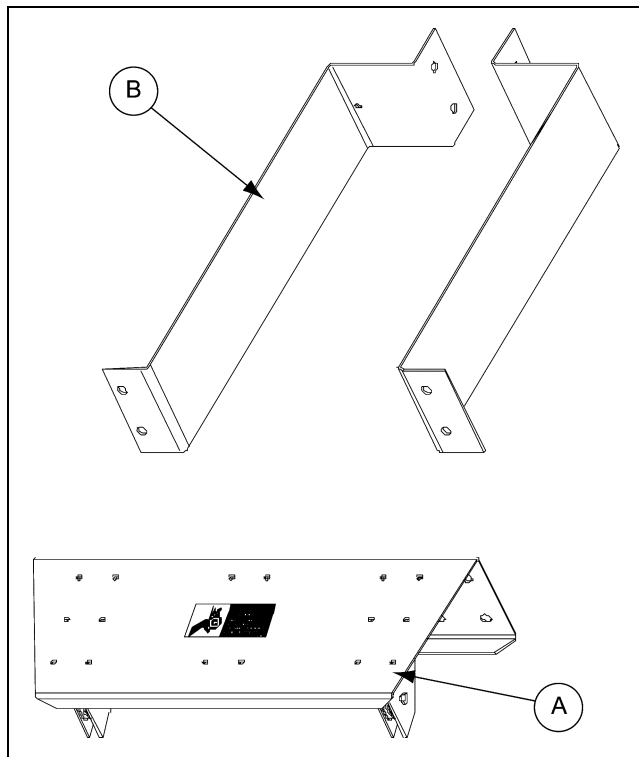


Figure 5E Trunking Removed for Clarity

| Ref # | Part #   | Description          |
|-------|----------|----------------------|
| A     | GSB-0007 | Cable Guide Assembly |
| B     | GSB10174 | 10" Clamp Band (2)   |

| Pulley Diameter | Clamp Band | Qty |
|-----------------|------------|-----|
| 10"             | GSB10174   | 2   |

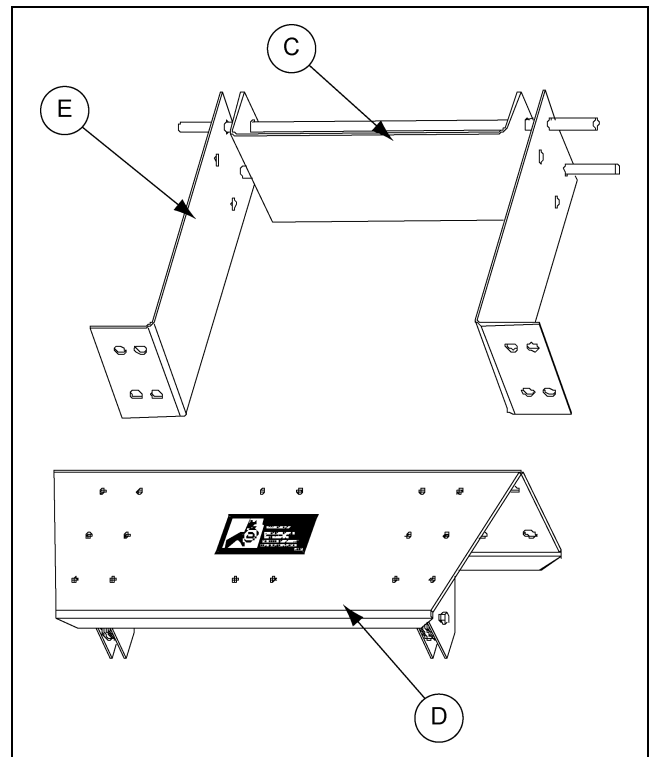


Figure 5F Trunking Removed for Clarity

| Ref # | Part #   | Description          |
|-------|----------|----------------------|
| C     | DSP16005 | Clamp Rod Weldment   |
| D     | GSB-0007 | Cable Guide Assembly |
| E     | DSP16002 | 16"-36" Clamp Band   |

| Part #   | 16", 24", 30" and 36" Pulleys | Qty |
|----------|-------------------------------|-----|
| DSP16002 | Clamp Band                    | 2   |
| DSP16005 | Clamp with Rod Weldment       | 1   |

## Control Handle Installation

Once the upper assembly has been installed, the control handle needs to be assembled to the lower cable wheel assembly. There are two (2) brackets (B) that mount to the bottom of the lower cable wheel assembly (A). These brackets are fastened with 5/16" x 1" bolts and whiz nuts. The control handle (C) is then mounted between the brackets using the second hole in the control handle and the end hole on the brackets. This is fastened using 5/16" x 2" bolt and lock nut. The hardware required is located in (GSB-DCG-HDW). This assembly is shown in [Figure 5G](#) below.

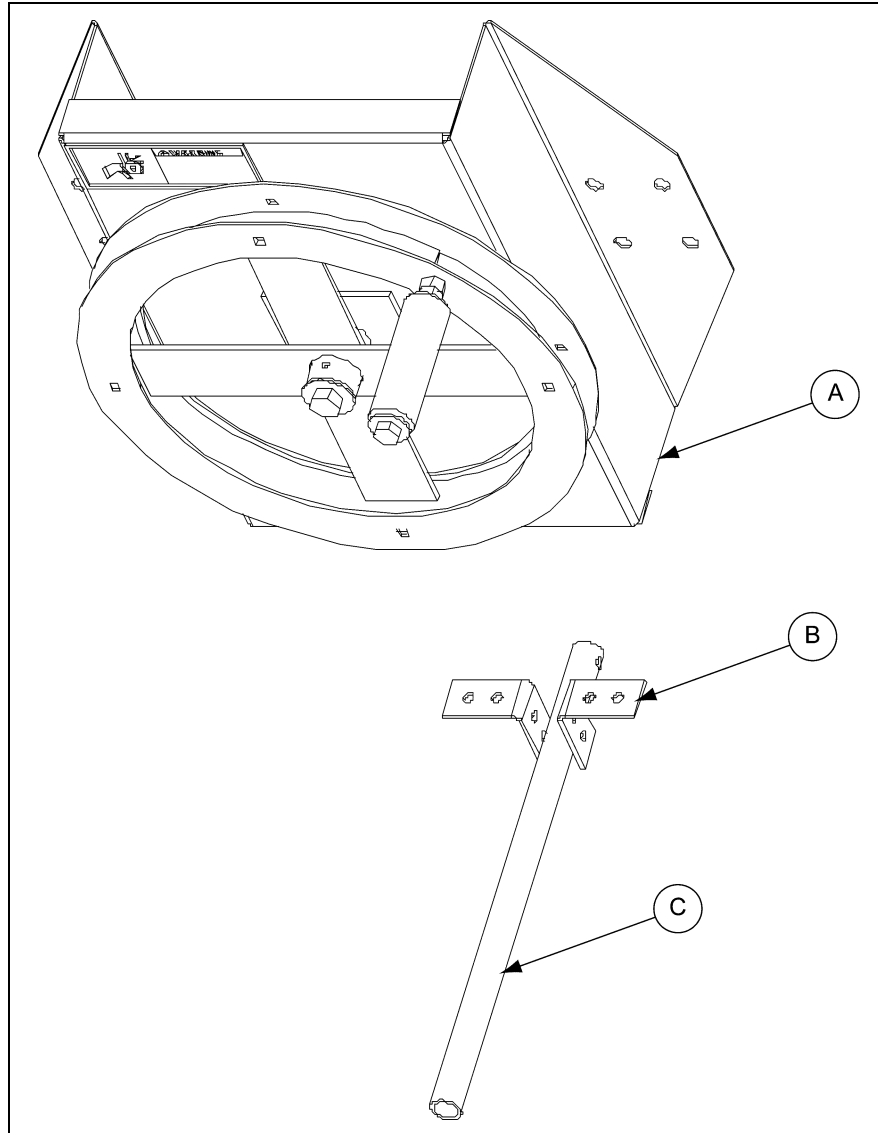


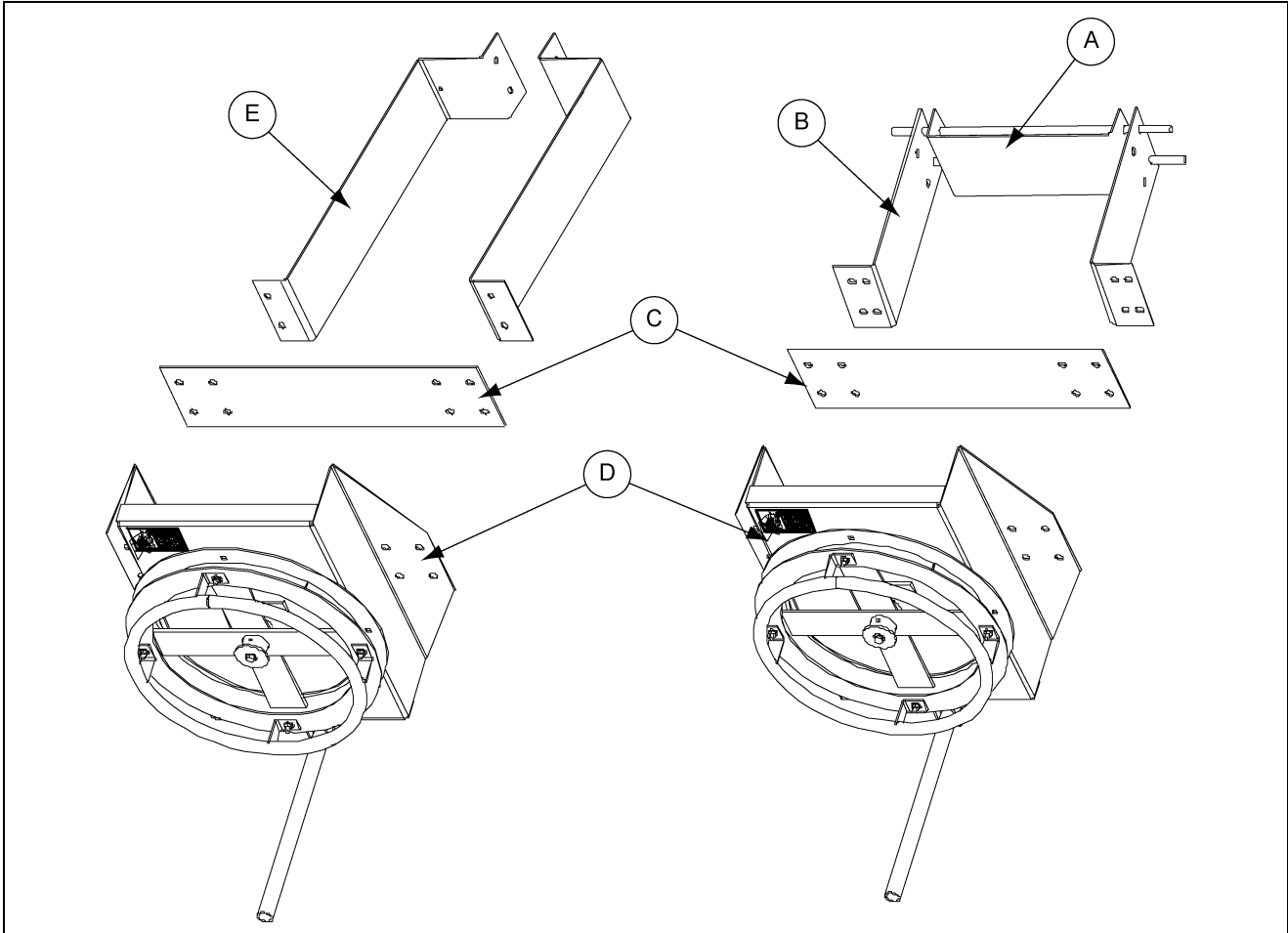
Figure 5G

| Ref # | Part #   | Description                 |
|-------|----------|-----------------------------|
| A     | GSB-0049 | Bottom Cable Wheel Assembly |
| B     | GSB-0031 | Control Handle Brackets     |
| C     | GSB-0030 | Control Handle              |

### Lower Cable Wheel Assembly

Once the control handle has been assembled the lower cable wheel can be installed. The location of the lower cable wheel assembly (D) is decided by where the operator will be positioned. Once the desired height has been determined for the lower cable wheel, it must be fastened to the trunking. The assembly of the lower cable wheel and clamp bands (B and E) are shown in [Figure 5H](#) below. The 1/2" x 2" bolts and nuts to fasten clamp bands to the lower cable wheel are provided in the hardware package (GSB-DCG-HDW). These clamp bands vary depending on what size leg you have. Refer to [tables Page 16](#) to see what clamp bands should be used.

**NOTE:** Use caution when tightening hardware, Do not overtighten and collapse trunking.



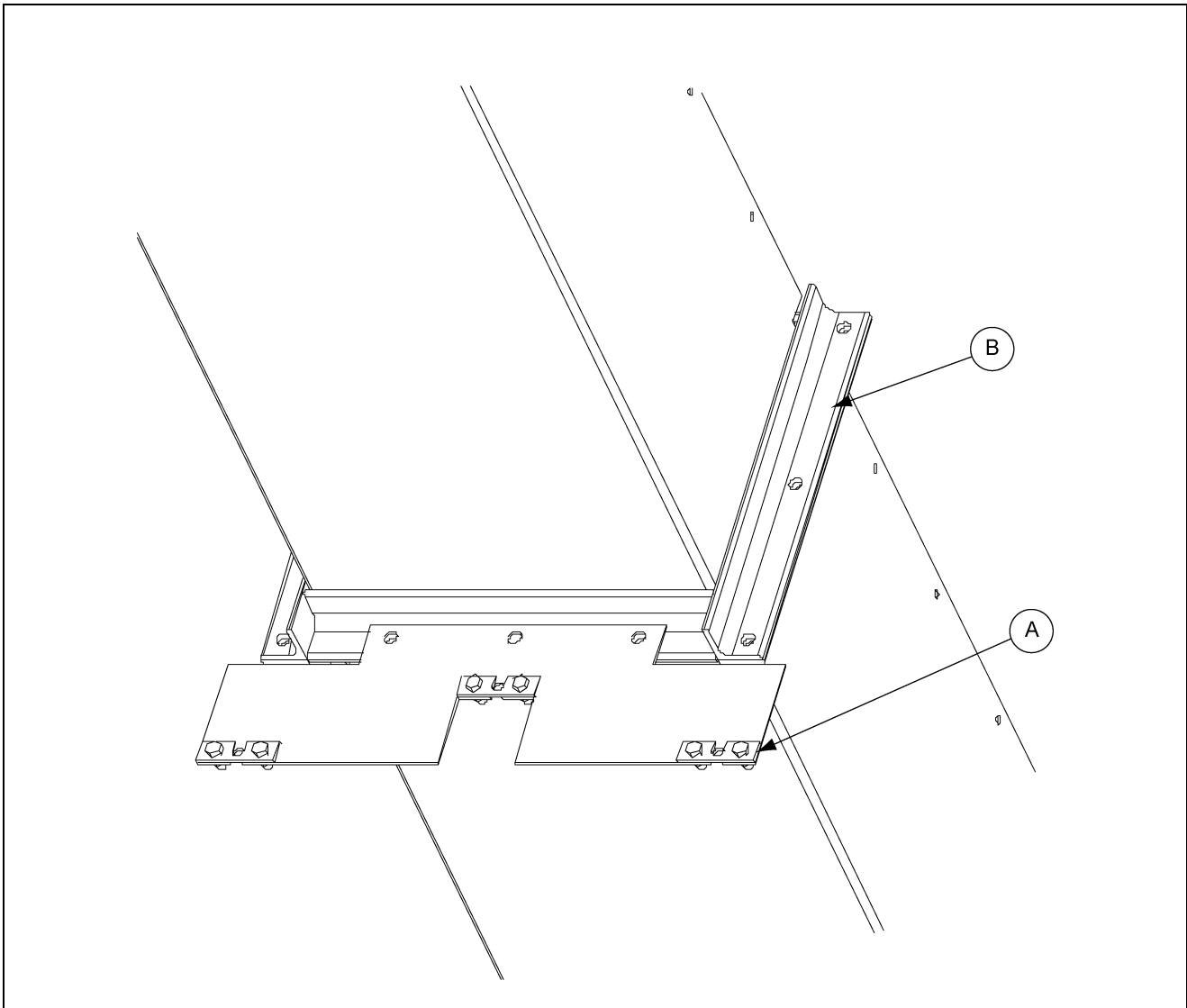
**Figure 5H** Trunking Removed for Clarity

| Ref # | Part #   | Description                 |
|-------|----------|-----------------------------|
| A     | DSP16005 | Clamp Rod Weldment          |
| B     | DSP16002 | 16"-36" Clamp Band (2)      |
| C     | GSB-0006 | Bottom Spacer Guide         |
| D     | GSB-0049 | Bottom Cable Wheel Assembly |
| E     | GSB10174 | 10" Clamp Band (2)          |

## Cable Guides

To help keep the cable in-line from the upper assembly to lower assembly intermediate cable guides need to be installed. The quantity of the intermediate cable guides is determined by the height of the leg. The company recommends that they be installed every 20'. These intermediate cable guides (A) are fastened at the trunking joints (B) using the same hardware as the joint. The assembly below shows how the intermediate cable guides are located on the trunking joints [See Figure 5I](#). For cable installation, [See Page 20](#).

**NOTE:** Cable is not supplied with cable control. The company recommends 3/16" aircraft cable.



**Figure 5I** Trunking Removed for Clarity

| Ref # | Part #   | Description    |
|-------|----------|----------------|
| A     | GSB-0022 | Cable Guides   |
| B     |          | Trunking Joint |

### Cable Guides

There is more than one way to install the cable for the cable control, we offer one method for installation. Rely on your qualified contractor's experience and techniques.

You will need two (2) pieces of cable. One piece should be long enough to reach from distributor to the lower control wheel assembly. Make sure there is enough extra to tie off both ends of cable. The other piece will have to be long enough to go from distributor to lower cable wheel assembly and back up to distributor. Make sure there is enough extra to wrap around the cable wheels approximately 7 times. The shorter piece will be used for lifting the spout inside distributor and the longer piece will be used to turn the spout.

With shorter piece of cable, take it and run through center pulley in upper cable guide assembly (See Figures 5E and 5F on Page 16.) Then run cable over to pulley (GSB-0045) on control pipe of distributor and continuing feeding cable up through control pipe in distributor. (See Figure 5D on Page 15.) Make sure cable is fed through all pulleys that are inside distributor. Attach this end to the sliding mechanism inside distributor by looping through eye in slide mechanism. Attach cable back to itself using cable clamp. Once this end is attached, run the cable down the side of the leg to the lower cable wheel assembly (See Figure 5H on Page 18.), running through cable guides when necessary. (See Figure 5I on Page 19.) Attach this end to the control handle (GSB-0030) on the lower cable wheel assembly by looping through end hole and attach cable back to itself using cable clamp. (See Figure 5H on Page 18.) The control handle will be pulled up to let spout turn inside distributor. Make sure when cable is clamped together that control handle still has enough travel upward to allow the spout to turn.

Take the longer piece of cable and mark the center. Start at the upper cable wheel on the control pipe of the distributor. (See Figure 5C on Page 14.) Start at the center of the cable and wrap it around the cable wheel a minimum of three (3) times. Take the ends of the cable and run them over to the upper cable guide assembly. (See Figure 5D on Page 15.) Feed the ends through the two (2) outside pulleys. Then run both cables down the leg to the lower cable wheel assembly (See Figure 5H on Page 18.), running through cable guides as necessary. (See Figure 5H on Page 18.) Take one end of cable and wrap around cable wheel a minimum of two (2) times. Loop through one of the square holes inside of cable wheel and attach back to itself with cable clamp. Take the other end and wrap a minimum of two (2) times. Loop end through one of the square holes inside on cable wheel, on opposite side as other cable end and attach back to itself with cable clamp.

**NOTE:** Cable is not supplied with cable control. The company recommends 3/16" aircraft cable.

## Limited Warranty — N.A. Grain Products

The GSI Group, LLC. ("GSI") warrants products which it manufactures, to be free of defects in materials and workmanship under normal usage and conditions for a period of 12 months from the date of shipment (or, if shipped by vessel, 14 months from the date of arrival at the port of discharge). If, in GSI's sole judgment, a product is found to have a defect in materials and/or workmanship, GSI will, at its own option and expense, repair or replace the product or refund the purchase price. This Limited Warranty is subject to extension and other terms as set forth below.

**Warranty Enhancements:** The warranty period for the following products is enhanced as shown below and is in lieu of (and not in addition to) the above stated warranty period. (Warranty Period is from date of shipment.)

|                   | Product  | Warranty Period |
|-------------------|--|-----------------|
| Storage           | Grain Bin Structural Design  | 5 Years         |
|                   | • Sidewall, roof, doors, platforms and walkarounds<br>• Flooring (when installed using GSI specified floor support system for that floor)<br>• Hopper tanks (BFT, GHT, NCHT, and FCHT) |                 |
| Conditioning      | Dryer Structural Design – (Tower, Portable and TopDry)<br>• Includes (frame, portable dryer screens, ladders, access doors and platforms)  | 5 Years         |
|                   | All other Dryer parts including:<br>• Electrical (controls, sensors, switches and internal wiring)   | 2 Years         |
|                   | All Non-PTO Driven Centrifugal and Axial Fans  | 3 Years         |
|                   | Bullseye Controllers   | 2 Years         |
| Material Handling | Bucket Elevators Structural Design   | 5 Years         |
|                   | Towers Structural Design   | 5 Years         |
|                   | Catwalks Structural Design   | 5 Years         |
|                   | Accessories (stairs, ladders and platforms) Structural Design  | 5 Years         |

### Conditions and Limitations:

THERE ARE NO WARRANTIES THAT EXTEND BEYOND THE LIMITED WARRANTY DESCRIPTION SET FORTH HEREIN; SPECIFICALLY, GSI DISCLAIMS ANY AND ALL OTHER WARRANTIES OF ANY KIND, EXPRESS OR IMPLIED, INCLUDING, WITHOUT LIMITATION, WARRANTIES OF MERCHANTABILITY OR FITNESS FOR A PARTICULAR PURPOSE OR USE IN CONNECTION WITH: (I) ANY PRODUCT MANUFACTURED OR SOLD BY GSI, OR (II) ANY ADVICE, INSTRUCTION, RECOMMENDATION OR SUGGESTION PROVIDED BY AN AGENT, REPRESENTATIVE OR EMPLOYEE OF GSI REGARDING OR RELATED TO THE CONFIGURATION, INSTALLATION, LAYOUT, SUITABILITY FOR A PARTICULAR PURPOSE, OR DESIGN OF SUCH PRODUCTS.

The sole and exclusive remedy for any claimant is set forth in this Limited Warranty and shall not exceed the amount paid for the product purchased. This Warranty only covers the value of the warranted parts and equipment, and does not cover labor charges for removing or installing defective parts, shipping charges with respect to such parts, any applicable sales or other taxes, or any other charges or expenses not specified in this Warranty. GSI shall not be liable for any other direct, indirect, incidental or consequential damages, including, without limitation, loss of anticipated profits or benefits. Expenses incurred by or on behalf of a claimant without prior written authorization from the GSI warranty department shall not be reimbursed. This warranty is not transferable and applies only to the original end-user. GSI shall have no obligation or responsibility for any representations or warranties made by or on behalf of any dealer, agent or distributor. Prior to installation, the end-user bears all responsibility to comply with federal, state and local codes which apply to the location and installation of the products.

This Limited Warranty extends solely to products sold by GSI and does not cover any parts, components or materials used in conjunction with the product, that are not sold by GSI. GSI assumes no responsibility for claims resulting from construction defects, unauthorized modifications, corrosion or other cosmetic issues caused by storage, application or environmental conditions. Modifications to products not specifically delineated in the manual accompanying the product at initial sale will void all warranties. This Limited Warranty shall not extend to products or parts which have been damaged by negligent use, misuse, alteration, accident or which have been improperly/inadequately maintained.

#### Notice Procedure:

In order to make a valid warranty claim a written notice of the claim must be submitted, using the RMA form, within 60 days of discovery of a warrantable nonconformance. The RMA form is found on the OneGSI portal.

#### Service Parts:

GSI warrants, subject to all other conditions described in this Warranty, Service Parts which it manufactures for a period of 12 months from the date of purchase unless specified in Enhancements above.

(Limited Warranty - N.A. Grain Products\_ revised 01 October 2020)

This equipment shall be installed in accordance with the current installation codes and applicable regulations, which should be carefully followed in all cases. Authorities having jurisdiction should be consulted before installations are made.



**1004 E. Illinois St.  
Assumption, IL 62510-0020  
Phone: 1-217-226-4421  
Fax: 1-217-226-4420  
[www.gsiag.com](http://www.gsiag.com)**



**GSI is a worldwide brand of AGCO Corporation.**