



Chain Loop Drive Box Assembly Instructions

1. Attach the reducer (1) to the motor mount frame (2) using the supplied reducer hardware.

NOTE: Use the second hole (6) from the bottom of the motor mount frame (2) to install the reducer (1).

2. Attach the belt guard bracket (3) to the motor mount frame (2) using the supplied hardware.

NOTE: Align the bottom slot in the belt guard bracket (3) to the second hole from the bottom of the motor mount frame (2) when using a TA3 or TA4 reducer (4). If you are using TA5, TA6 or TA7 reducer (5), use the first hole from the bottom.

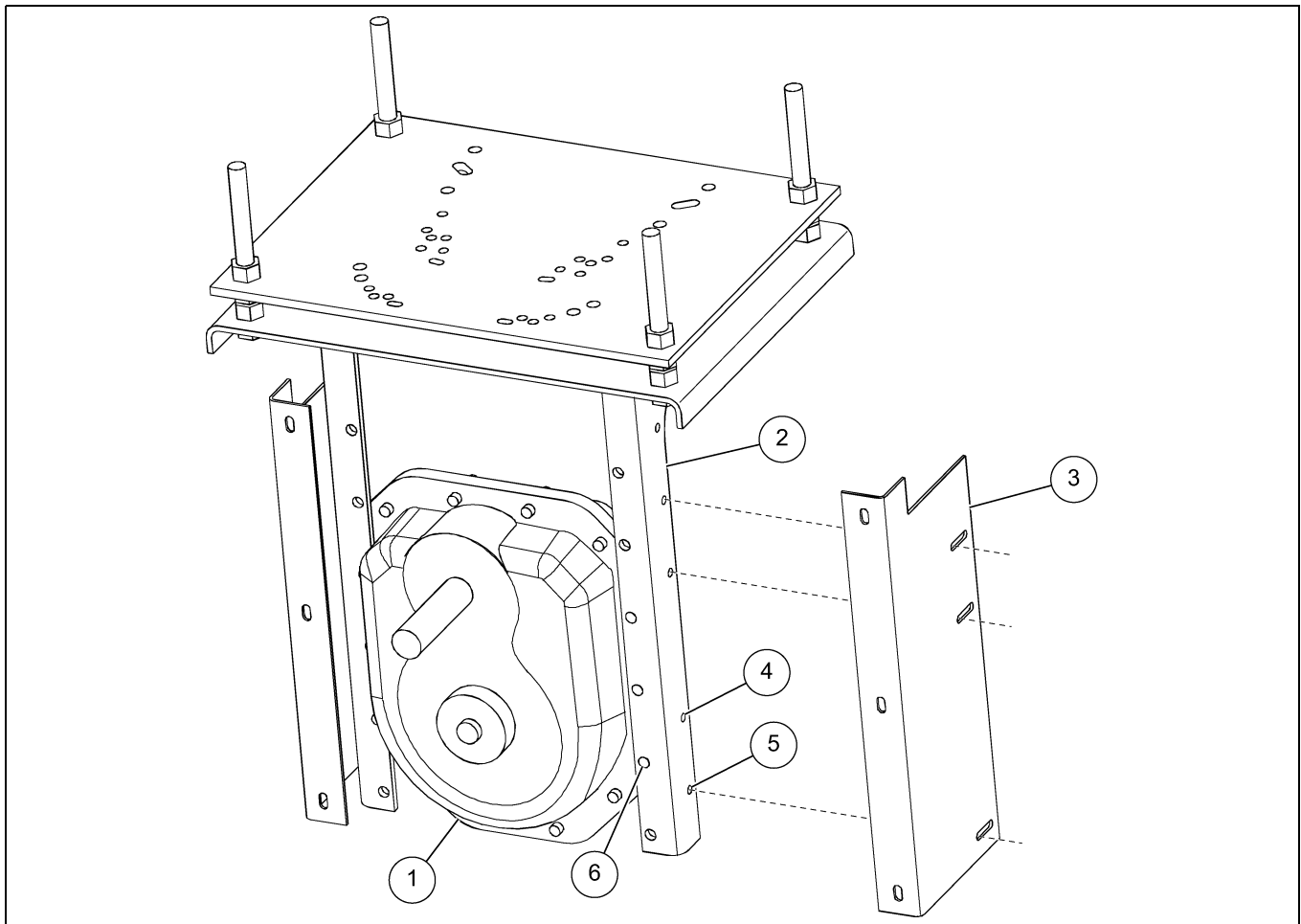


Figure 1 Chain Loop Drive Box Assembly

Ref #	Description
1	Reducer
2	Motor Mount Frame
3	Belt Guard Bracket

Ref #	Description
4	Hole #1 (TA3 and TA4)
5	Hole #2 (TA5, TA6 and TA7)
6	Second Hole for Attaching Reducer

