

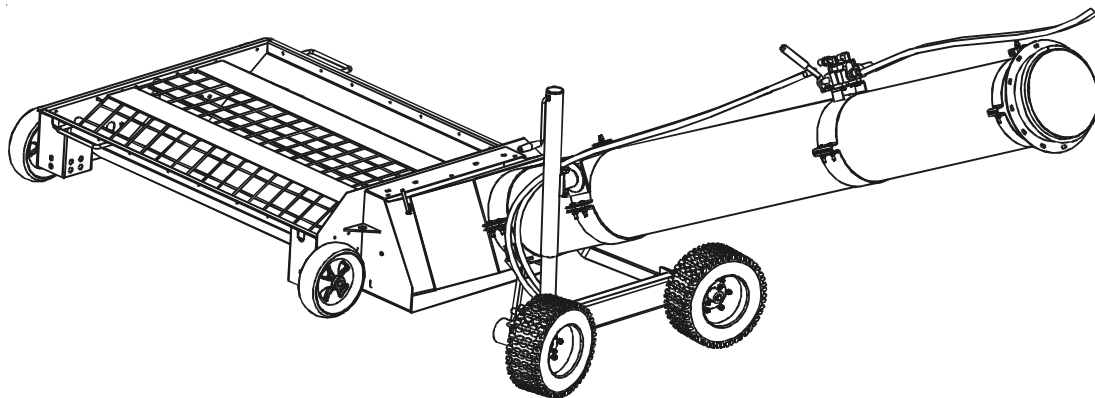
**PNEG-1334
9-26-06**

E-Z GLIDE 10" & 12" Swing Away Hydraulic Hopper Wheel Kit

**PNEG-1334
9-29-06**

E-Z GLIDE 10" & 12" Swing Away Hydraulic Hopper Wheel Kit

Assembly Manual

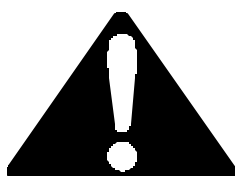


PNEG-1334

SAFETY GUIDELINES

This manual contains information that is important for you, the owner/operator, to know and understand. This information relates to protecting **personal safety** and **preventing equipment problems**. It is the responsibility of the owner/operator to inform anyone operating or working in the area of this equipment of these safety guidelines. To help you recognize this information, we use the symbols that are defined below.

Please read the manual and pay attention to these sections. Failure to read this manual and it's safety instructions is a misuse of the equipment and may lead to serious injury or death.



This is the safety alert symbol. It is used to alert you to potential personal injury hazards. Obey all safety messages that follow this symbol to avoid possible injury or death.



DANGER indicates an imminently hazardous situation which, if not avoided, will result in death or serious injury.



WARNING indicates a potentially hazardous situation which, if not avoided, could result in death or serious injury.



CAUTION indicates a potentially hazardous situation which, if not avoided, may result in minor or moderate injury.

CAUTION

CAUTION used without the safety alert symbol indicates a potentially hazardous situation which, if not avoided, may result in property damage.

NOTE

NOTE indicates information about the equipment that you should pay special attention to.

Safety

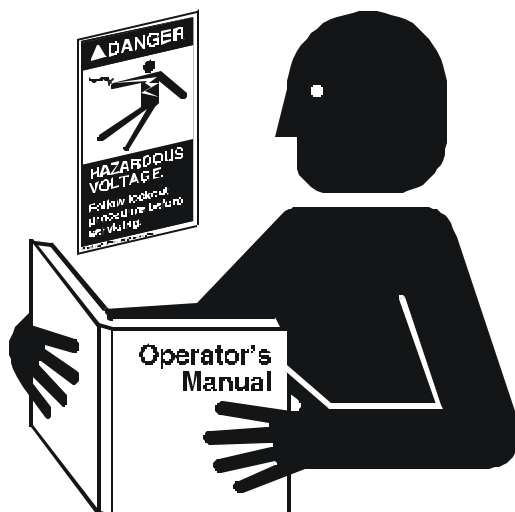
FOLLOW SAFETY INSTRUCTIONS

Carefully read all safety messages in this manual and on your machine safety signs. Keep signs in good condition. Replace missing or damaged safety signs. Be sure new equipment components and repair parts include the current safety signs. Replacement safety signs are available from the manufacturer.

Learn how to operate the machine and how to use controls properly. Do not let anyone operate without instruction.

Keep your machinery in proper working condition. Unauthorized modifications to the machine may impair the function and/or safety and affect machine life.

If you do not understand any part of this manual and need assistance, contact your dealer.



AVOID HIGH-PRESSURE FLUIDS

Escaping fluid under pressure can penetrate the skin causing serious injury.

Avoid the hazard by relieving pressure before disconnecting hydraulic or other lines. Tighten all connections before applying pressure fluids.

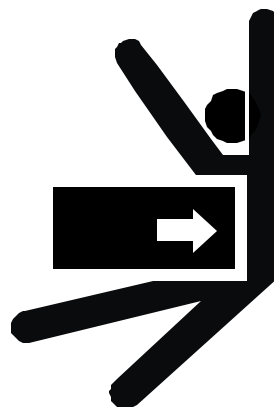
If an accident occurs, see a doctor immediately. Any fluid injected into the skin must be surgically removed within a few hours or gangrene may result.



INSTALL HYDRAULIC FLUID RESTRICTION ORIFICE

DO NOT OPERATE without Hydraulic Fluid Restriction Orifice installed.

Failure to install Orifice will make the Swing Out Hopper move very rapidly around auger and could crush you against the auger tube.

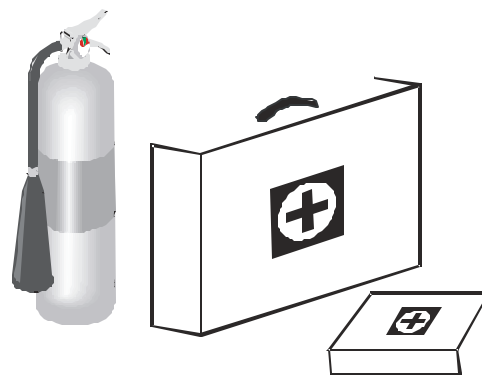


PREPARE FOR EMERGENCIES

Be prepared if fire starts.

Keep a first aid kit and fire extinguisher handy.

Keep emergency numbers for doctors, ambulance service, hospital, and fire department near your telephone.



WEAR PROTECTIVE CLOTHING

Wear close fitting clothing and safety equipment appropriate to the job.

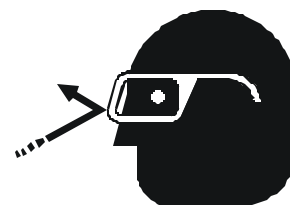
Safety glasses should be worn at all times to protect eyes from debris.

Wear gloves to protect your hands from sharp edges on plastic or steel parts.

A respirator may be needed to help prevent breathing potentially toxic fumes and dust.

Wear hard hat and steel toe boots to help protect your head and toes from falling debris.

Eye Protection



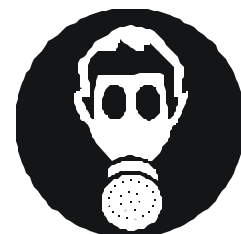
Gloves



Steel Toe Boots



Respirator



Hard Hat

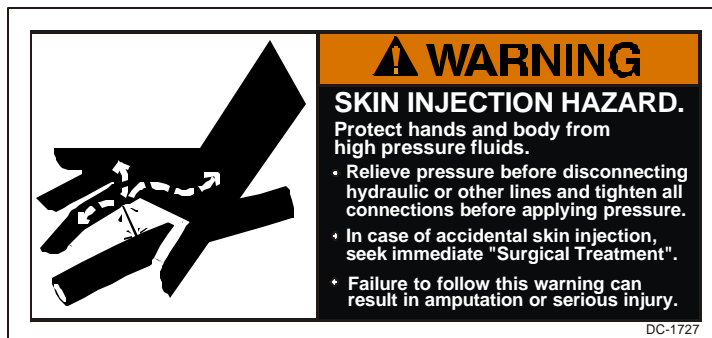


Decal Locations

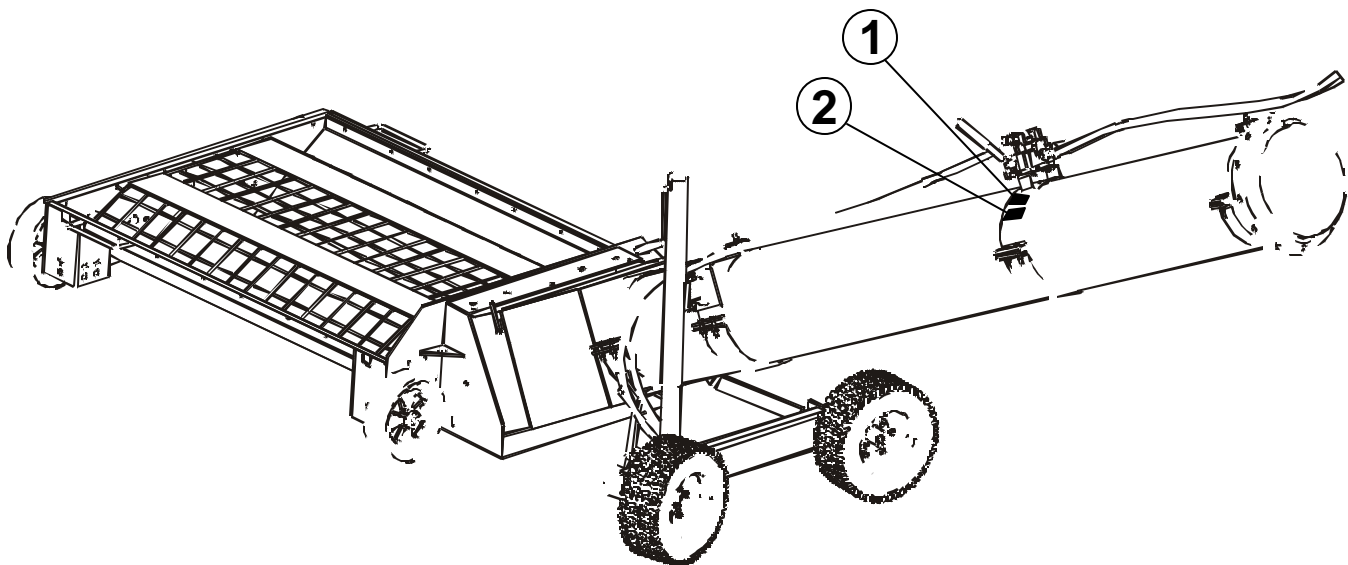
The safety decals shown below are included with the wheel kit. The decals should be located on the 4" Halfband under the Hydraulic control lever. Inspect all decals and replace any that are illegible, worn, or missing. Contact your dealer or the manufacturer to order free replacement decals.



① DC-1726 (Size: 3-3/4" x 1-3/4")



② DC-1727 (Size: 3-3/4" x 1-3/4")



Wheels to Axle

1. Assemble the Wheels to the axle.

- A. Bolt the hydraulic motor [1] to the axle [2] with (4) 3/8" x 3/4" hex bolts and lock nuts.
- B. Bolt the wheel [3] to the drive hub [4] with (4) 5/16" lock nuts.
- C. Slide the splined drive hub [4] over the hydraulic motor shaft then bolt it together with a 1/4" x 1-3/4" hex bolt.
- D. Attach the spindle [5] to the other end of the axle with (4) 3/8" x 1-1/4" hex bolts and lock nuts.
- E. Bolt the other hub [6] to the remaining wheel [3] with (4) 5/16" x 1" hex bolts and lock nuts.
- F. Slide the hub and wheel assembly onto the spindle [5] and fasten with the external snap ring [7].
- G. Attach the lower jack mount [8] to the axle [2] with (2) 3/8" x 3" hex bolts, flat washers, and lock nuts.

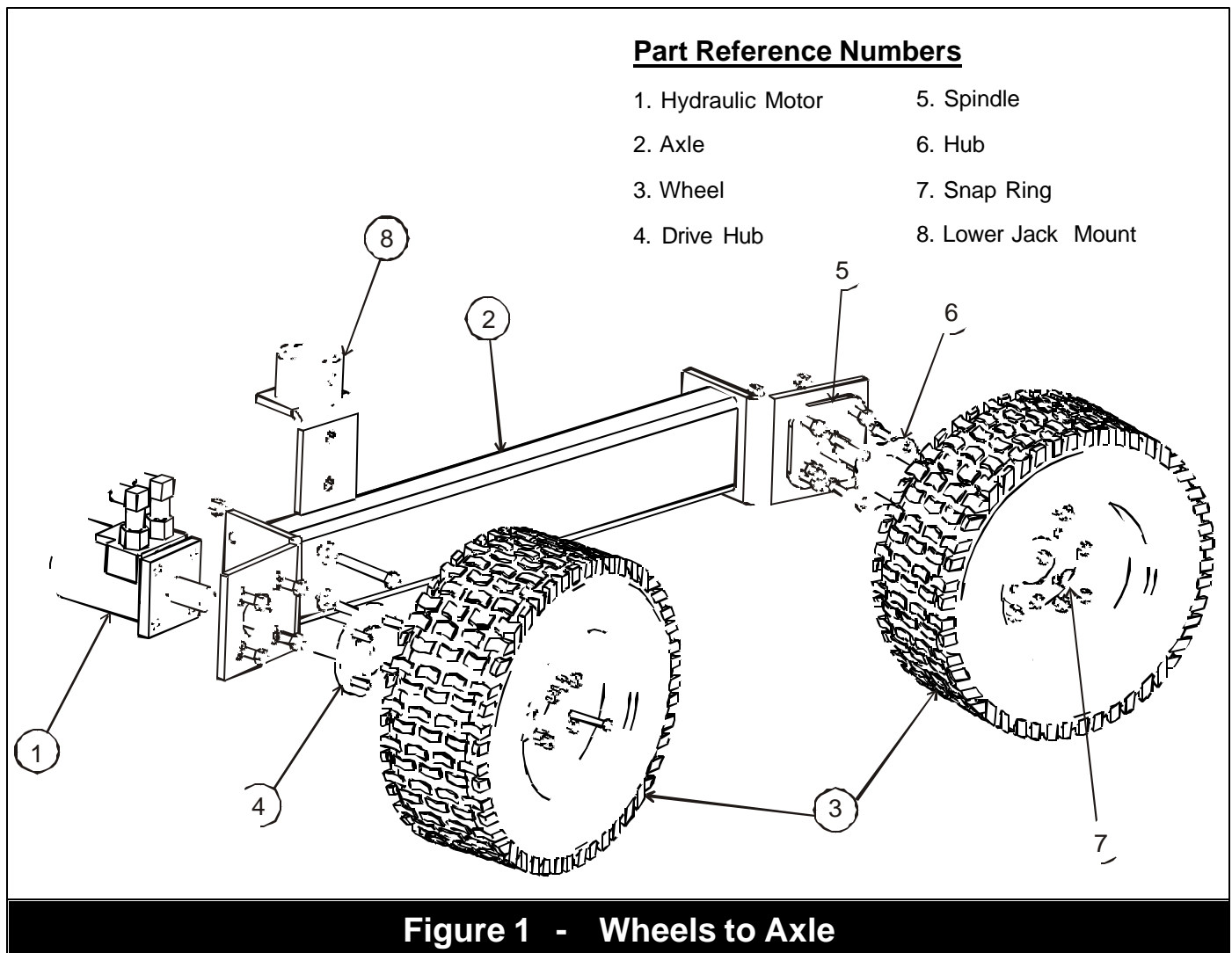


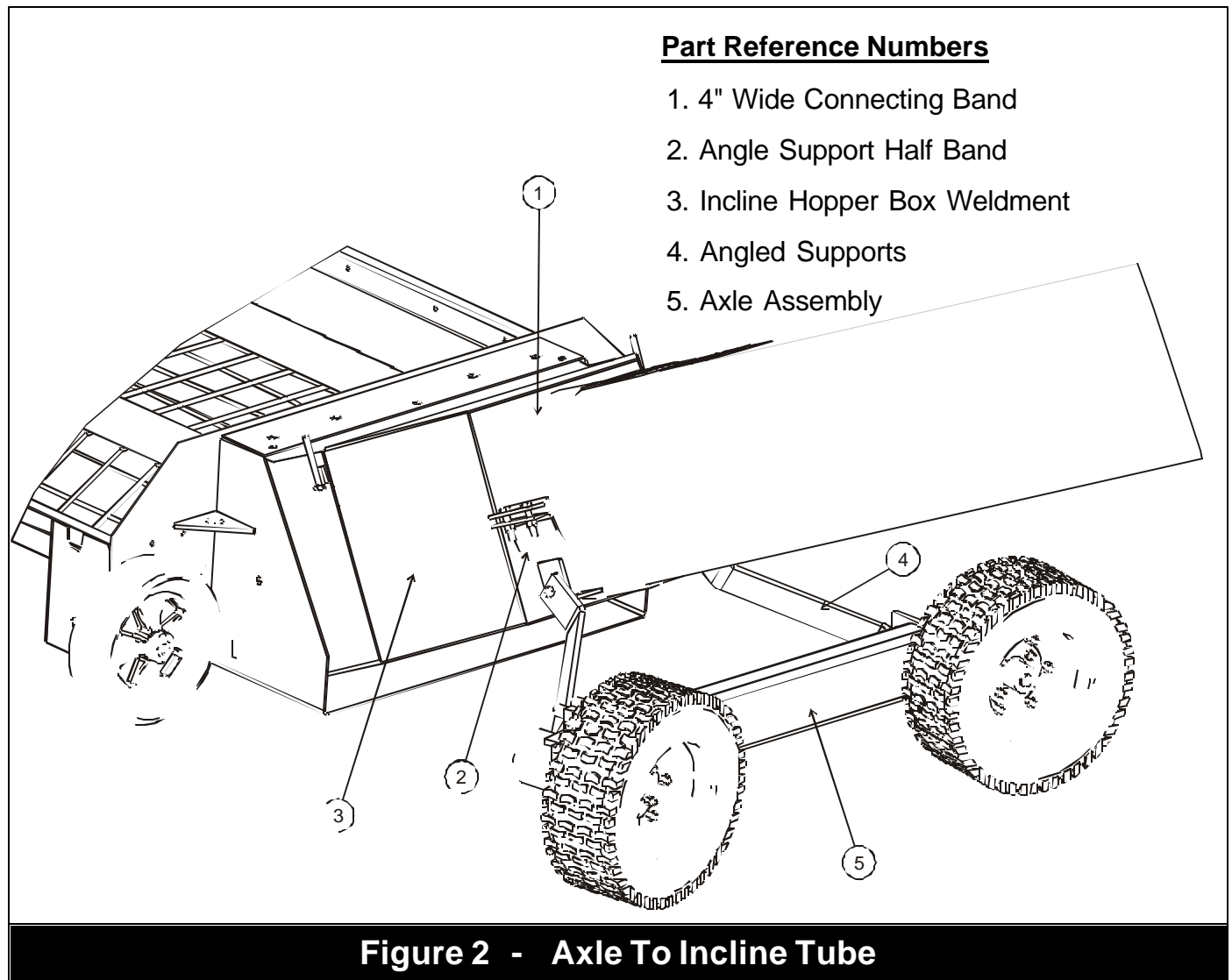
Figure 1 - Wheels to Axle

Axle To Incline Tube

2. Connect axle assembly to the incline tube.

A. Attach a 4" wide connecting band [1] to the angle support half band [2] with (4) $\frac{3}{8}$ " x $1\frac{3}{4}$ " hex bolts and lock nuts. The half bands should be touching the incline hopper box weldment. (3)

B. Bolt the angled supports [4] to the brackets on the half band and the lower holes on the axle assembly [5] with (4) $\frac{3}{8}$ " x $1\frac{1}{4}$ " hex bolts and lock nuts. These points will need to pivot.



Jack Assembly

3. Assemble the Jack.

- A. Bolt the jack to the lower jack mount [1] with a 3/8" x 3-1/2" hex bolt and lock nut.
- B. Place the jack pivot band [2] on the tube to the distance indicated.
- C. Bolt the jack to the jack pivot band [2] with a 5/8" x 3-1/2" hex bolt and lock nut.
- D. Attach the lower half band [3] with (4) 3/8" x 1-3/4" hex bolts and lock nuts.

Part Reference Numbers

- 1. Lower Jack Mount
- 2. Jack Pivot Band
- 3. Lower Half Band

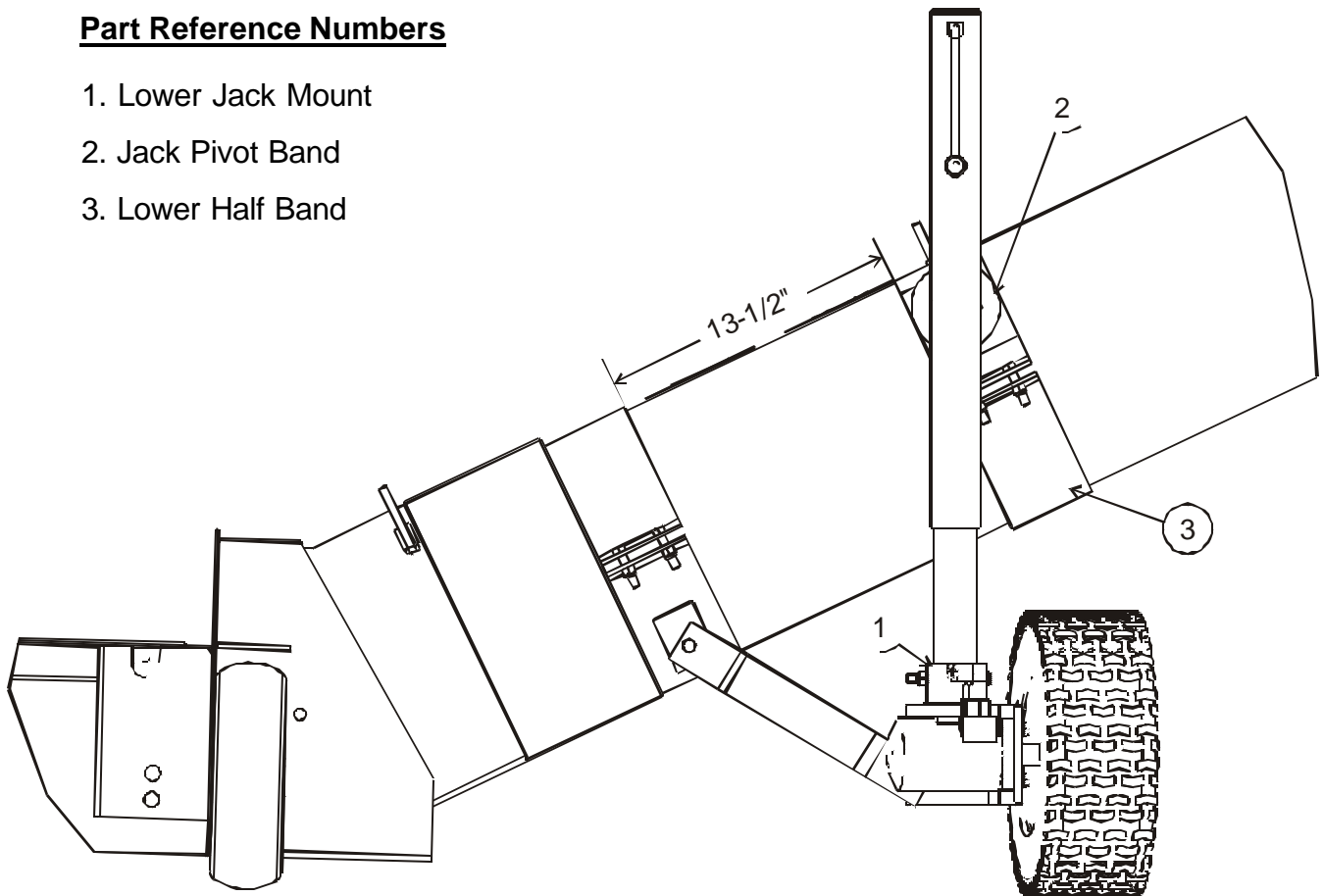


Figure 3 - Jack Assembly

Directional Valve and Hydraulic Hoses

4. Assemble directional valve and hydraulic hoses.

- A. Connect the valve mount half band [1] to the tube with a 4" wide light gage band [2] and (4) 5/16" x 2" hex bolts and lock nuts.
- B. Bolt on the hose holder half band [3] with a 2" wide half band [4] and (2) 5/16" x 2" hex bolts and lock nuts.
- C. Attach the directional valve [5] to the valve mount half band with (4) 3/8" x 3/4" hex bolts.
- D. Connect the 84" (7') hydraulic hoses [6] by attaching the 1/2" NPT end to the hydraulic motor fittings [7].
- E. Assemble (2) 1/2" NPT 90° elbows [8] to the directional valve [5].
- F. Assemble the 1/2" NPT orifice [9] to one of the 90° fittings.
- G. Connect the remaining ends of the 84" (7') hydraulic hoses [6] to the 90° fitting and orifice [9].
- H. Assemble the 3/4" to 1/2" 90° elbow [10] to the intake end of the valve.
- I. Assemble the 3/4" to 1/2" fitting [11] to the other side of the valve.
- J. Connect the 168" (14') hydraulic hose [12] to the remaining 90° elbow and fitting on the directional valve.
- K. Bolt the hoses to the jack pivot band [13] and the upper hose holder band [14] with (4) hose holder brackets and 3/8" lock nuts.

WARNING

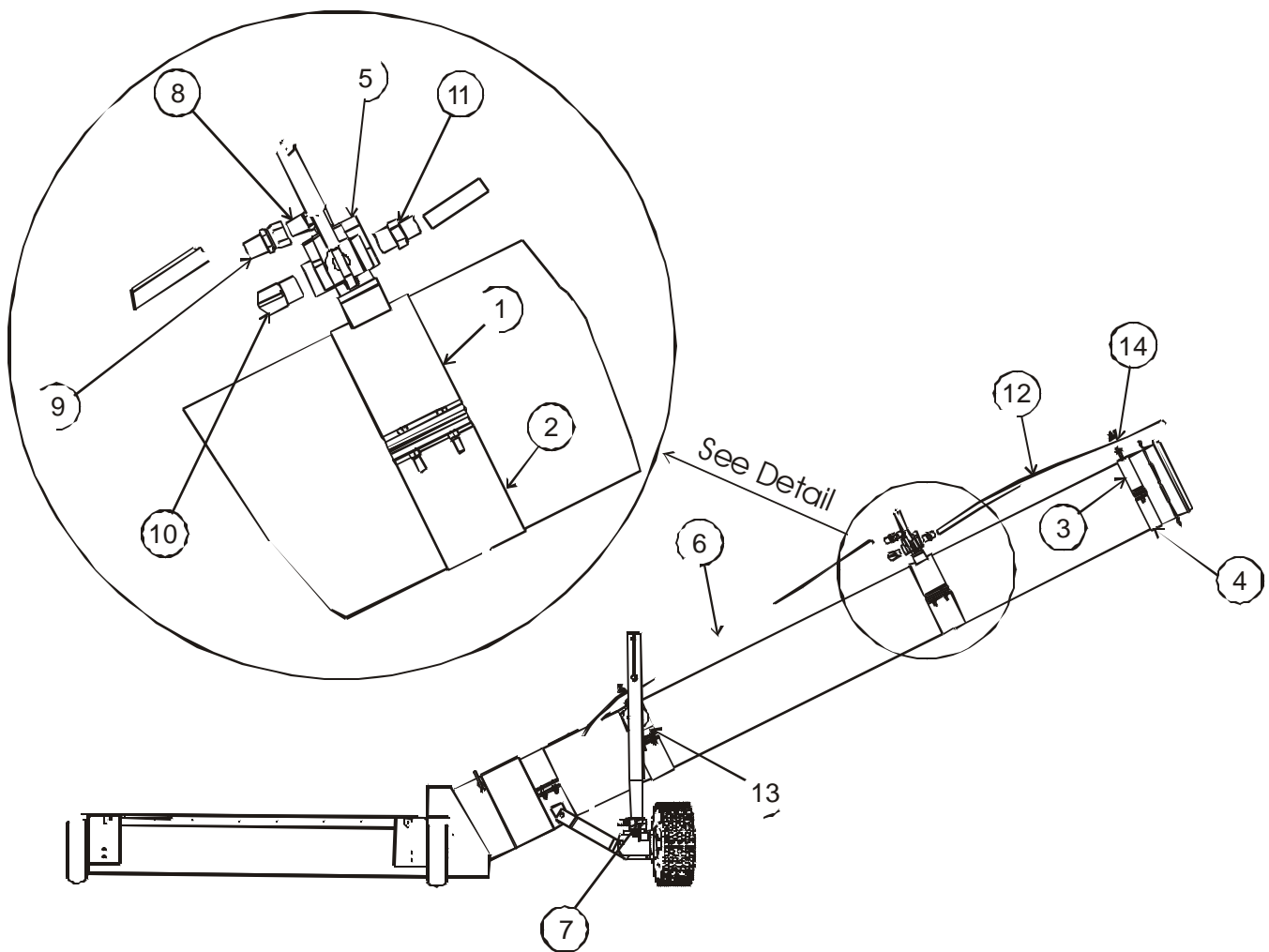
The 1/2" NPT orifice must be assembled in order to properly restrict the flow of hydraulic fluid through the motor.

CAUTION

The hopper may move quickly with some tractors. Be sure everyone is clear of the work area when using the mover.

NOTE

The directional valve is a four-way valve designed to operate a two-way hydraulic circuit from a single hydraulic source. The valve is also closed center, meaning all ports are blocked when the valve spring returns to neutral.

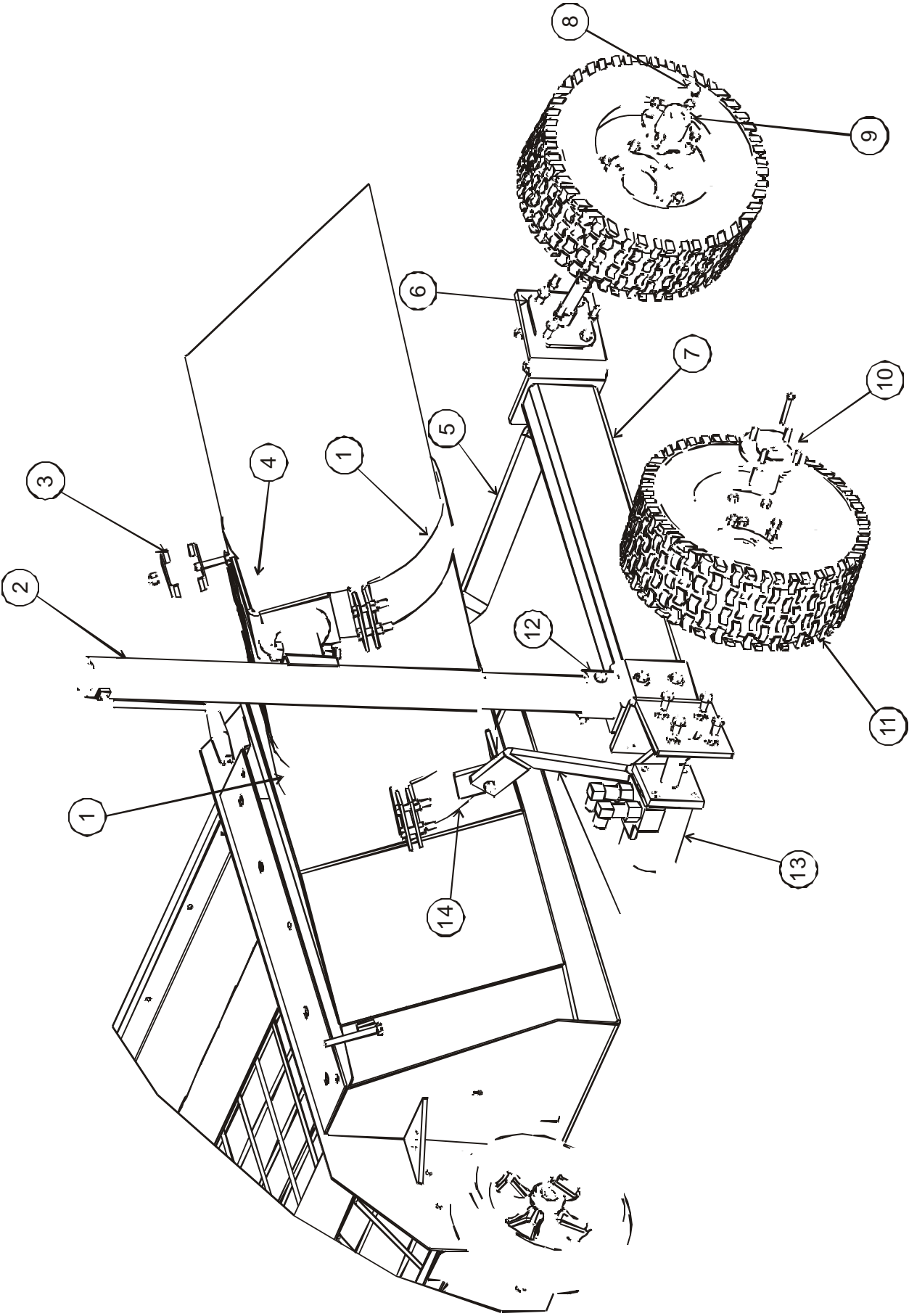


Part Reference Numbers

- | | |
|---------------------------------|----------------------------|
| 1. Value Mount Half Band | 8. 1/2" NPT 90° Elbows |
| 2. 4" Wide Light Gage Half Band | 9. 1/2" NPT Orifice |
| 3. Hose Holder Half Band | 10. 3/4" to 1/2" 90° Elbow |
| 4. 2" Wide Half Band | 11. 3/4" to 1/2" Fitting |
| 5. Directional Valve | 12. 14' Hydraulic Hose |
| 6. 7' Hydraulic Hose | 13. Jack Pivot Band |
| 7. Hydraulic Motor Fittings | 14. Hose Holder |

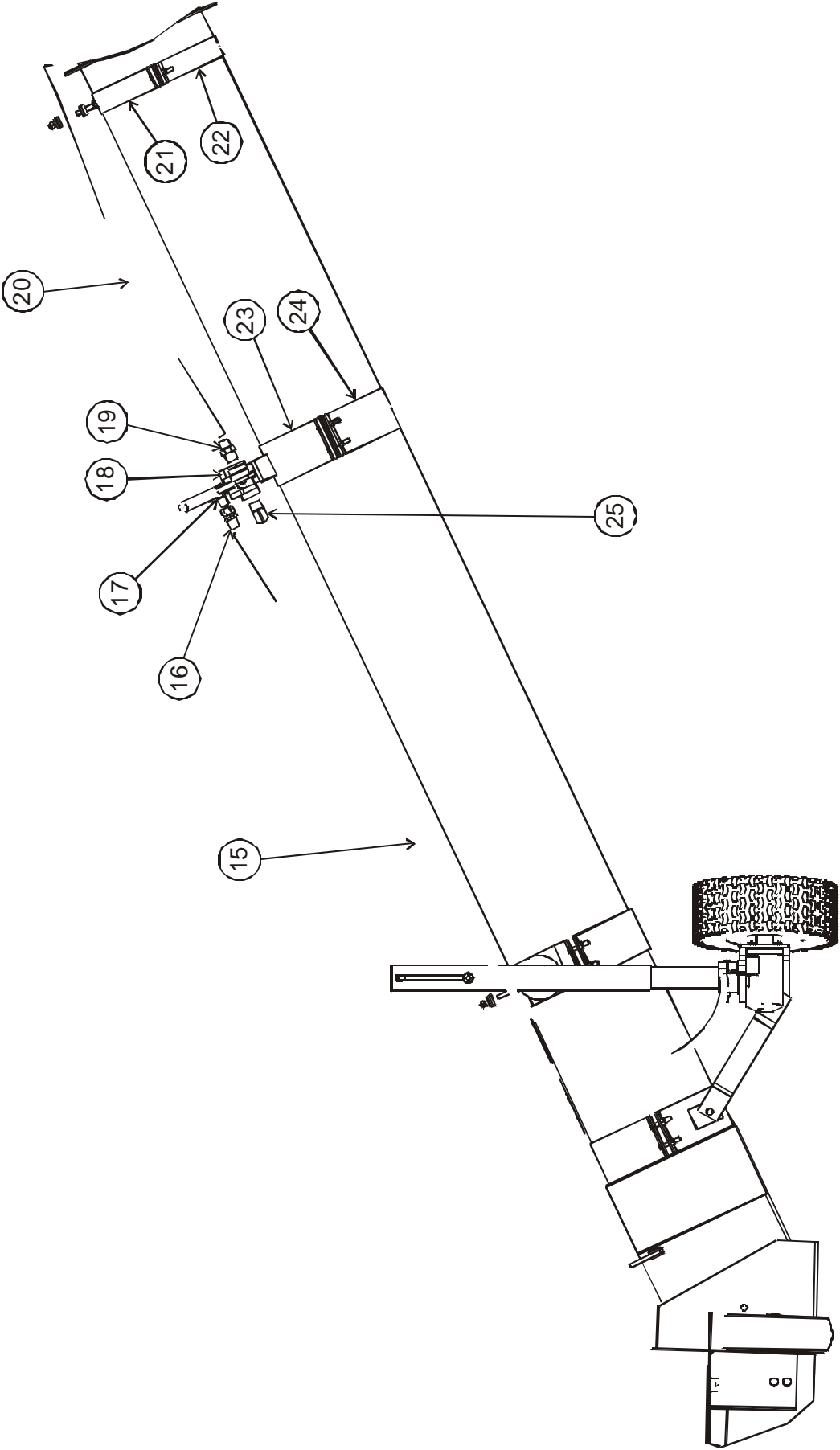
Figure 4 - Directional Valve and Hydraulic Hoses

Axle & Jack Parts



Hydraulic Wheel Kit Parts List		
Item #	Part #	Description
1	GK5117	Halfband: 10" x 4" 7Ga. Painted
	GK4599	Halfband: 12" x 4" 7Ga. Painted
2	GK6536	Motor: 15HP 460/3/60 254T
3	GK6549	Hose Holder
4	GK6639	10" Rear Halfband
	GK6540	12" Rear Halfband
5	GK6535	Angled Support
6	GK6537	Spindle
7	GK6541	Axle w/ Angle Mounts
8	GK6546	Snap Ring
9	GK6545	Hub with Bushings
10	GK6538	Drive Hub Assembly
11	GK6533	Wheel for Hydraulic Wheel Kit
12	GK6542	Lower Jack Mount
13	GK6534	Hydraulic Motor
14	GK6638	10" Front Half Band
	GK6539	12" Front Half Band
15	GK6611	Hydraulic Hose: 1/2" x 7'
16	GK6616	Orifice 1/2" to 1/2" NPT
17	GK6613	1/2" to 1/2" 90 Deg. FTG
18	GK6548	Directional Valve
19	GK6615	Hyd: 3/4" to 1/2" NPT FTG
20	GK6612	Hydraulic Hose: 1/2" x 14'
21	GK6641	10" Hose Holder Band
	GK6551	12" Hose Holder Band
22	GK1057	Halfband: 10" x 2" 12 Ga. Painted
	GK1409	Halfband: 12" x 2" 12 Ga. Painted
23	GK6640	10" Valve Halfband
	GK6550	12" Valve Halfband
24	GK5115	Halfband: 10" x 4" 12 Ga. Painted
	GK2412	Halfband: 12" x 4" 12 Ga. Painted
25	GK6614	Hyd: 3/4" to 1/2" 90 Deg. FTG

Direct Valve and Hydraulic Hose Parts



The GSI Group, Inc. Warranty

THE GSI GROUP, INC. ("GSI") WARRANTS ALL PRODUCTS WHICH IT MANUFACTURES TO BE FREE OF DEFECTS IN MATERIAL AND WORKMANSHIP UNDER NORMAL USAGE AND CONDITIONS FOR A PERIOD OF 12 MONTHS AFTER RETAIL SALE TO THE ORIGINAL END USER. THE PURCHASER'S SOLE REMEDY AND GSI'S ONLY OBLIGATION SHALL BE TO REPAIR OR REPLACE, AT GSI'S OPTION AND EXPENSE, PRODUCTS THAT, IN GSI'S SOLE JUDGMENT, CONTAIN A MATERIAL DEFECT DUE TO MATERIALS OR WORKMANSHIP. ALL DELIVERY AND SHIPMENT CHARGES TO AND FROM GSI'S FACTORY WILL BE PURCHASER'S RESPONSIBILITY. EXPENSES INCURRED BY OR ON BEHALF OF THE PURCHASER WITHOUT PRIOR WRITTEN AUTHORIZATION FROM AN AUTHORIZED EMPLOYEE OF GSI SHALL BE THE SOLE RESPONSIBILITY OF THE PURCHASER.

EXCEPT FOR THE LIMITED WARRANTY EXPRESSED ABOVE, GSI MAKES NO FURTHER WARRANTY OF ANY KIND, EXPRESS OR IMPLIED, INCLUDING, WITHOUT LIMITATION, WARRANTIES OF MERCHANTABILITY OR FITNESS FOR A PARTICULAR PURPOSE OR USE IN CONNECTION WITH (I) PRODUCT MANUFACTURED OR SOLD BY GSI OR (ii) ANY ADVICE, INSTRUCTION, RECOMMENDATION OR SUGGESTION PROVIDED BY AN AGENT, REPRESENTATIVE OR EMPLOYEE OF GSI REGARDING OR RELATED TO THE CONFIGURATION, INSTALLATION, LAYOUT, SUITABILITY FOR A PARTICULAR PURPOSE, OR DESIGN OF SUCH PRODUCTS.

GSI SHALL NOT BE LIABLE FOR ANY DIRECT, INDIRECT, INCIDENTAL OR CONSEQUENTIAL DAMAGES, INCLUDING, WITHOUT LIMITATION, LOSS OF ANTICIPATED PROFITS OR BENEFITS. PURCHASER'S SOLE AND EXCLUSIVE REMEDY IS AS SET FORTH IN THE LIMITED WARRANTY EXPRESSED ABOVE, WHICH SHALL NOT EXCEED THE AMOUNT PAID FOR THE PRODUCT PURCHASED. THIS WARRANTY IS NOT TRANSFERABLE AND APPLIES ONLY TO THE ORIGINAL PURCHASER. GSI SHALL HAVE NO OBLIGATION OR RESPONSIBILITY FOR ANY REPRESENTATIONS OR WARRANTIES MADE BY OR ON BEHALF OF ANY DEALER, AGENT OR DISTRIBUTOR OF GSI.

GSI ASSUMES NO RESPONSIBILITY FOR CLAIMS RESULTING FROM ERECTION DEFECTS OR UNAUTHORIZED MODIFICATIONS TO PRODUCTS WHICH IT MANUFACTURED. MODIFICATIONS TO PRODUCTS NOT SPECIFICALLY DELINEATED IN THE MANUAL ACCOMPANYING THE EQUIPMENT AT INITIAL SALE WILL NULLIFY THE PRODUCT WARRANTY THAT MIGHT HAVE BEEN OTHERWISE AVAILABLE.

THE FOREGOING WARRANTY SHALL NOT EXTEND TO PRODUCTS OR PARTS WHICH HAVE BEEN DAMAGED BY NEGLIGENT USE, MISUSE, ALTERATION OR ACCIDENT. THIS WARRANTY EXTENDS SOLELY TO ONLY PRODUCTS MANUFACTURED BY GSI. THIS WARRANTY IS EXCLUSIVE AND IN LIEU OF ALL OTHER WARRANTIES EXPRESS OR IMPLIED. GSI RESERVES THE RIGHT TO MAKE DESIGN OR SPECIFICATION CHANGES AT ANY TIME.

PRIOR TO INSTALLATION, PURCHASER HAS THE RESPONSIBILITY TO COMPLY WITH ALL FEDERAL, STATE AND LOCAL CODES WHICH MAY APPLY TO THE LOCATION AND INSTALLATION OF PRODUCTS MANUFACTURED OR SOLD BY GSI.

This Equipment shall be installed in accordance with the current installation codes and applicable regulations which should be carefully followed in all cases. Authorities having jurisdiction should be consulted before installation occurs.



1004 East Illinois Street
Assumption, IL 62510
217-226-4421 Phone
