

42' Diameter Bin Recessed Full Floor Instructions

Installation Manual

PNEG-2153

Version: 1.0

Date: 09-20-17



PNEG-2153

All information, illustrations, photos, and specifications in this manual are based on the latest information available at the time of publication. The right is reserved to make changes at any time without notice.

Contents

Chapter 1 Introduction	4
Guidelines for Proper Storage of Grain Bin Materials Prior to Construction	4
Chapter 2 Safety	5
Safety Guidelines	5
Cautionary Symbols Definitions	6
Safety Cautions	7
Safety Sign-Off Sheet	9
Chapter 3 Decals	10
Chapter 4 Recommended Method for Full Floor Installation	12
Fan Placement Diagram	12
Grain Systems Recommended Method for Full Floor Installation	13
Undersplice Specifications	16
Installing the Undersplice	17
Installing the Undersplice and Oversplice for Small Grain Floor Planks	18
Chapter 5 Grandstand Identification	19
20 Gauge Grandstand Identification	19
Chapter 6 Flashing Installation	20
Grain Systems Formed Flashing Installation	20
Chapter 7 Grandstand Layout at Center Well for Recirculating System	21
Chapter 8 Well Installation Cut Detail	22
Well Installation Plank Cut Detail for 42', 48' and 60' Split Floor	22
Chapter 9 42' Cut-Lok/Cor-Lok Plank Order	23
Chapter 10 Plank Lengths	24
42' 3' Split Plank Length	24
Chapter 11 42' Grandstand Layout for Recirculating System	25
42' 20 Gauge Grandstand Layout for Recirculating System Cut-Lok or 18 Gauge Cor-Lok Floors	25
Chapter 12 42' Grandstand Layouts, 33' Maximum Wall Height	26
42' Cor-Lok/Cut-Lok and 20 Gauge Grandstand Layout 2.66" Corrugated Bins 5 Rings	26
42' Cor-Lok/Cut-Lok and 20 Gauge Grandstand Layout 2.66" Corrugated Bins 6 Rings and 4.00" Corrugated Bins 4 Rings and 5 Rings	27
42' Cor-Lok/Cut-Lok and 20 Gauge Grandstand Layout 2.66" Corrugated Bins 7 Rings	28
42' Cor/Cut-Lok and 20 Gauge Grandstand Layout 2.66" Corrugated Bins 8 Rings and 4.00" Corrugated Bins 6 Rings	29
42' Cor-Lok/Cut-Lok and 20 Gauge Grandstand Layout 2.66" Corrugated Bins 9 Rings	30
42' Cor-Lok/Cut-Lok and 20 Gauge Grandstand Layout 2.66" Corrugated Bins 10 Rings and 4.00" Corrugated Bins 7 Rings	31
42' Cor-Lok/Cut-Lok and 20 Gauge Grandstand Layout 2.66" Corrugated Bins 11 Rings and 4.00" Corrugated Bins 8 Rings	32
42' Cor-Lok/Cut-Lok and 20 Gauge Grandstand Layout 2.66" Corrugated Bins 12 Rings and 4.00" Corrugated Bins 9 Rings	33
Chapter 13 20 Gauge Floor Support Requirements	34
20 Gauge Grandstand Chart - 2.66" Corrugation	34
20 Gauge Grandstand Chart - 4.00" Corrugation	35
Chapter 14 Flashing Support at Stiffeners	36
Stiffener Flashing Support Instructions for Internal Universal Stiffeners	36
Chapter 15 Air Flow Support Instructions	37
Installation of Air Flow Supports	37
Chapter 16 Warranty	43

SEE [PAGE 34](#) AND [PAGE 35](#) FOR 20 GAUGE FLOOR SUPPORT REQUIREMENTS.

1. Introduction

READ THIS MANUAL carefully to learn how to properly use and install equipment. Failure to do so could result in personal injury or equipment damage.

INSPECT the shipment immediately upon arrival. The customer is responsible for ensuring that all quantities are correct. The customer should report and note any damage or shortage on the bill of lading to justify their claim to the transport company.

THIS MANUAL SHOULD BE CONSIDERED a permanent part of your equipment and should be easily accessible when needed.

This warranty provides you the assurance that the company will back its products when defects appear within the warranty period. In some circumstances, the company also provides field improvements, often without charge to the customer, even if the product is out of warranty. Should the equipment be abused, or modified to change its performance beyond the factory specifications, the warranty will become void and field improvements may be denied.

Guidelines for Proper Storage of Grain Bin Materials Prior to Construction

Storage of the build materials prior to construction is important. Do not to allow moisture to remain between sheets or panels.

Wet storage stain (rust) will develop when closely packed bundles of galvanized material, such as sidewall and roof sheets, have moisture present. Inspect roof and sidewall bundles on arrival for any moisture. If moisture is present, it must not be allowed to remain between the sheets. Separate the sheets or panels immediately and wipe them down. Spray with a light oil or diesel fuel.

If possible, sidewall bundles, roof sheets and other closely packed galvanized materials should be stored in a dry, climate controlled building. If outdoor storage is unavoidable, the materials should be stored so that they are raised above the ground and vegetation. Any stacking and spacing materials should not be corrosive or wet. Be sure to protect materials from the weather, but permit air movement around the bundles if possible.

Storing roof bundles and sidewall sheets at a slight incline can also help minimize the presence of moisture. Storing the bundles with the center of the dome up (like an arch) is one option for minimizing moisture during storage. Sidewall bundles can also be stored on edge but must be secured so that they do not fall over and cause injury.

If “white rust” or “wet storage stain” occurs, contact the manufacturer immediately about ways to minimize the adverse effect upon the galvanized coating.

Safety Guidelines

Safety guidelines are general-to-specific safety rules that must be followed at all times. This manual is written to help you understand safe operating procedures and problems that can be encountered by the operator and other personnel when using this equipment. Save these safety guidelines for future reference.

As owner or operator, you are responsible for understanding the requirements, hazards, and precautions that exist and to inform others as required. Unqualified persons must stay out of the work area at all times.

Alterations must not be made to the equipment. Alterations can produce dangerous situations resulting in **SERIOUS INJURY** or **DEATH**.

This equipment must be installed in accordance with the current installation codes and applicable regulations, which must be carefully followed in all cases. Authorities having jurisdiction must be consulted before installations are made.

When necessary, you must consider the installation location relative to electrical, fuel and water utilities.

Personnel operating or working around equipment must read this manual. This manual must be delivered with equipment to its owner. Failure to read this manual and its safety instructions is a misuse of the equipment.

ST-0001-3

Cautionary Symbols Definitions

Cautionary symbols appear in this manual and on product decals. The symbols alert the user of potential safety hazards, prohibited activities and mandatory actions. To help you recognize this information, we use the symbols that are defined below.



This symbol indicates an imminently hazardous situation which, if not avoided, **will result in serious injury or death.**



This symbol indicates a potentially hazardous situation which, if not avoided, **can result in serious injury or death.**



This symbol indicates a potentially hazardous situation which, if not avoided, **can result in minor or moderate injury.**



This symbol is used to address practices not related to personal injury.



This symbol indicates a general hazard.



This symbol indicates a prohibited activity.



This symbol indicates a mandatory action.

ST-0005-2

Safety Cautions

Use Personal Protective Equipment

- Use appropriate personal protective equipment:

Eye Protection



Respiratory Protection



Foot Protection



Hearing Protection



Head Protection



Fall Protection



Hand Protection



- Wear clothing appropriate to the job.
- Remove all jewelry.
- Tie long hair up and back.

ST-0004-1

Follow Safety Instructions

- Carefully read all safety messages in this manual and safety signs on your machine. Keep signs in good condition. Replace missing or damaged safety signs. Be sure new equipment components and repair parts include the current safety signs. Replacement safety signs are available from the manufacturer.
- Learn how to operate the machine and how to use controls properly. Do not let anyone operate without instruction.
- If you do not understand any part of this manual or need assistance, contact your dealer.



ST-0002-1

2. Safety

Maintain Equipment and Work Area

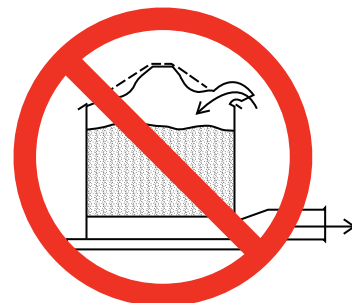
- Understand service procedures before doing work. Keep area clean and dry.
- Never service equipment while it is operating. Keep hands, feet, and clothing away from moving parts
- Keep your equipment in proper working condition. Replace worn or broken parts immediately.



ST-0003-1

Prevent Roof Damage Due to Vacuum Pressure

- Roof damage can result from excessive vacuum or internal pressure from fans or other air moving systems. The manufacturer does not warrant this type of roof damage.
- Adequate ventilation or “makeup air” devices must be provided for all powered air handling systems.
- The manufacturer does not recommend the use of downward flow systems (suction).
- Severe roof damage can result from any blockage of air passages.
- Operating fans during high humidity or cold weather conditions can cause air exhaust or intake ports to freeze.



ST-0028-2

Sharp Edge Hazard

- This product has sharp edges, which can cause serious injury.
- To avoid injury, handle sharp edges with caution and always use proper protective clothing and equipment.



ST-0036-2

Safety Sign-Off Sheet

Below is a sign-off sheet that can be used to verify that all personnel have read and understood the safety instructions. This sign-off sheet is provided for your convenience and personal record keeping.

[illegible]

ST-0007


3. Decals


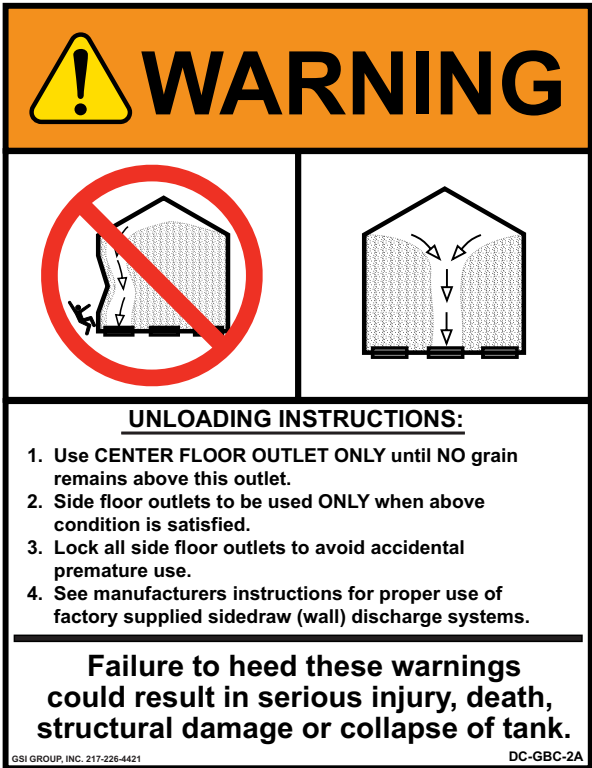
The safety decals on your equipment are safety indicators which must be carefully read and understood by all personnel involved in the installation, operation, service and maintenance of the equipment.

To replace a damaged or missing decal, contact us to receive a free replacement.

GSI Decals

1004 E. Illinois St.
Assumption, IL. 62510
Phone: 1-217-226-4421

Location	Decal #	Decals	Description
Located next to aeration system.	DC-969	<div></div>	Caution Vacuum Pressure

Location	Decal #	Decals	Description
On bin door covers	DC-GBC-1A		Danger Keep Clear of Augers
On bin door covers	DC-GBC-2A		Warning Unload Instructions

4. Recommended Method for Full Floor Installation

Fan Placement Diagram

For uniform air flow, place the fans in relation to the unloading tube as shown in [Figure 4A](#). Floor planks should be perpendicular to the unloading tube.

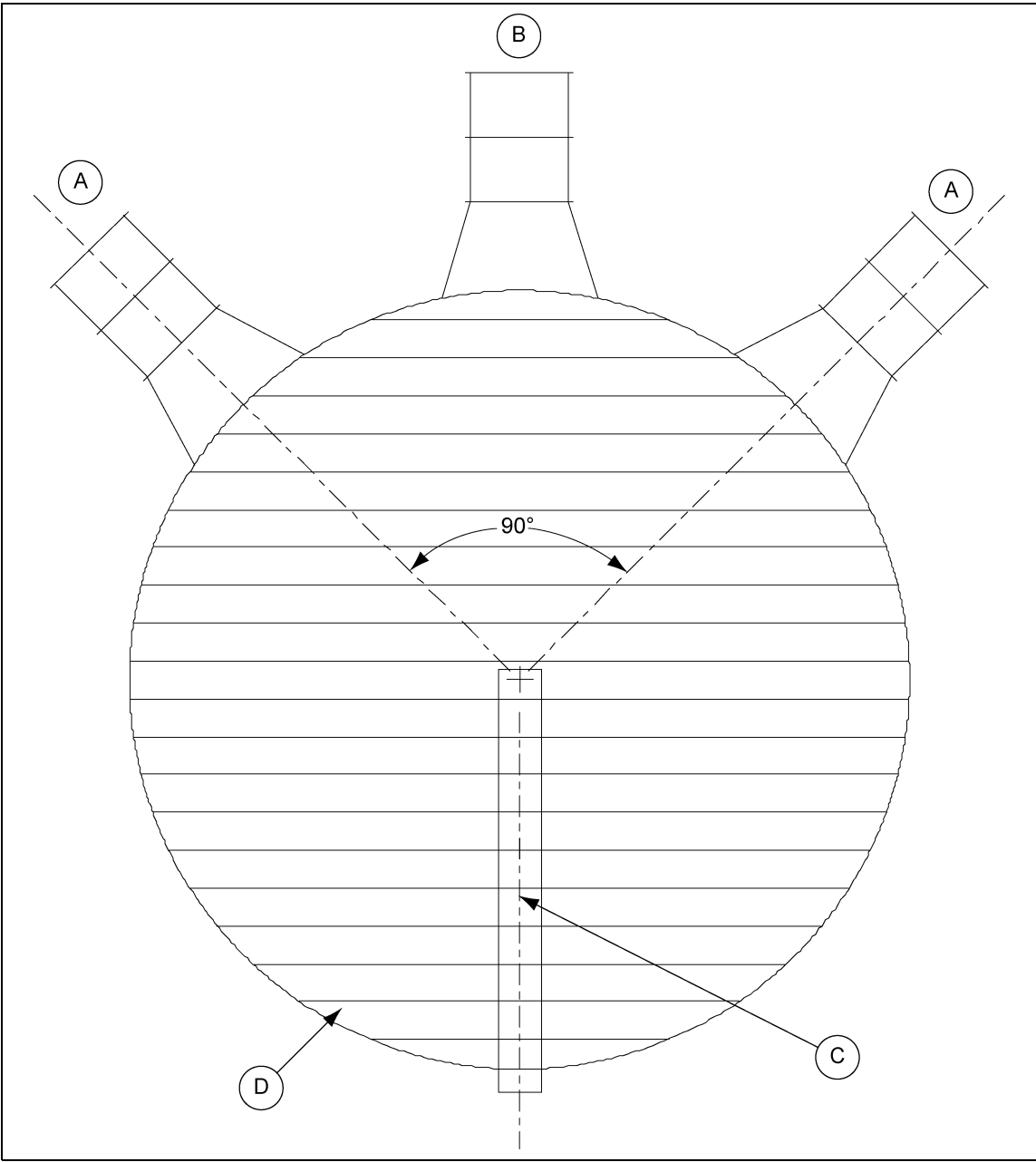


Figure 4A

Ref #	Description
A	Placement with Two (2) Fans
B	Placement with One Fan
C	Auger/Unload Equipment
D	Flooring Planks

Grain Systems Recommended Method for Full Floor Installation

Using the GSI recommended method for full floor installation should save construction time and eliminate the problem of improper installation which could invalidate your warranty. Note the following dimensions as shown in [Figure 4B](#).

- Dimension “A” is the leg-to-leg spacing along the centerline of a given plank.
- Dimension “B” is the amount of stagger between supports under adjacent planks and is half of Dimension “A”.
- Dimension “C” is the distance from the center of the unload auger to the nearest rows of supports and is half of Dimension “B”.

Dimensions “A”, “B” and “C” are shown on the appropriate grandstand layout for wall heights under 32 feet. For taller bins, grandstand quantity as well as dimensions “A” and “B” are given on [Page 34](#) and [Page 35](#) for 20 gauge.

1. Layout centerlines of tank. Make sure one centerline is in line with the direction of the flooring planks while the other centerline is perpendicular with the flooring planks. ([See Figure 4B.](#))
2. From the centerline that is perpendicular to the flooring planks, measure the distance of “C” Dimension and mark a chalk line. ([See Figure 4B.](#))
3. From the line chalked in the previous step, measure over the distance of “B” Dimension and chalk another line. Repeat this procedure across the bin until reaching the wall in both directions. When completed, there should be a set of parallel lines (perpendicular to the floor planks) with “B” Dimension distance between each line. ([See Figure 4B.](#))

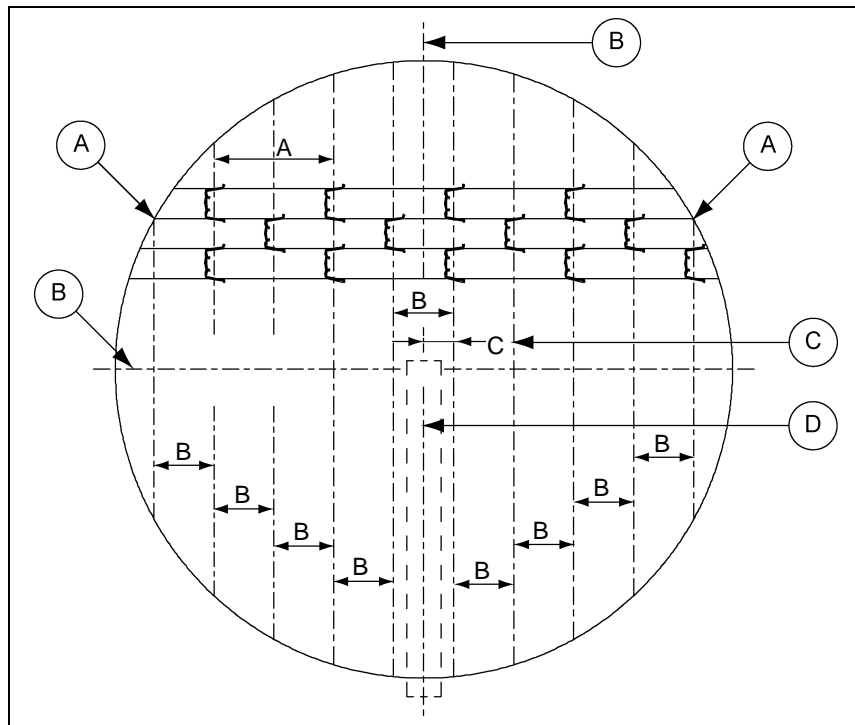


Figure 4B

Ref #	Description
A	Chalked lines referred to Step 2 .
B	Centerline
C	1/2 of “B” Dimension
D	Auger/Unload Equipment

4. Recommended Method for Full Floor Installation

IMPORTANT: First piece of flooring must start at the proper distance from centerline of bin. Refer to floor layout on [Page 23](#). First piece may need to be trimmed for length to fit at the proper location. (See [Figure 4C](#).)

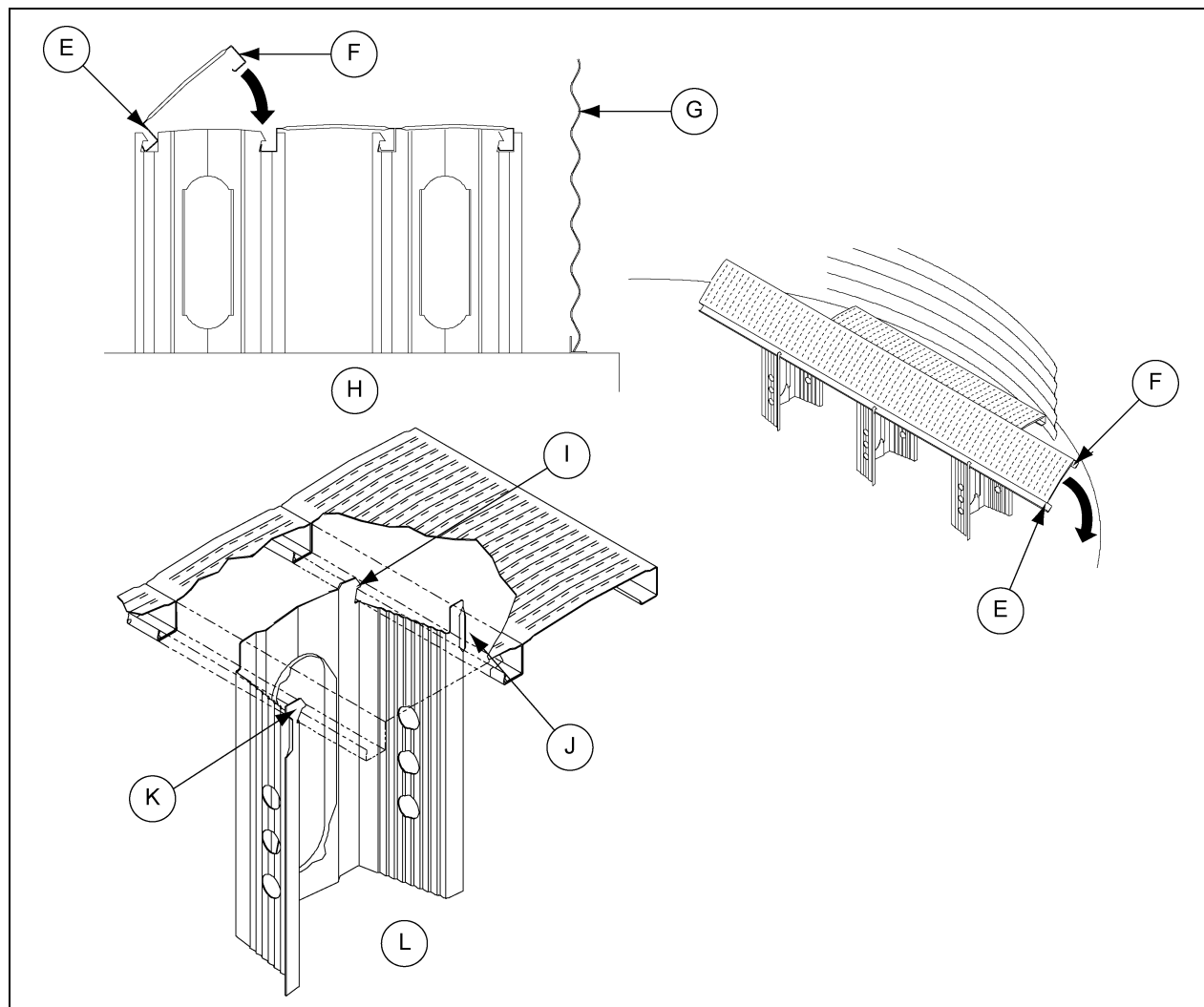


Figure 4C

Ref #	Description
E	Open Channel Edge
F	Flat Edge
G	Bin Wall
H	Correct Assembly Method

Ref #	Description
I	Inside Hook
J	Straight Tab
K	Outside Hook
L	The Grandstand

4. Install flooring starting at the bin wall on the opposite side of the unload auger. Floor planks should be placed perpendicular to the unload auger with the outside edge the correct distance from the center of the bin. (See [Figure 9A on Page 23](#).) Be sure the flat edge of the floor plank is facing the bin wall and the open channel edge (E) is facing towards the center of the bin. (See [Figure 4C](#).) Position the supports for the first/shortest floor plank according to the number of bin rings and corrugation as shown in the illustrations on [Pages 25-33](#) or stated in the charts on [Pages 34-35](#). Attach the flashing to flooring and bin wall to hold plank in place. (See [Page 20](#) for flashing installation.)

4. Recommended Method for Full Floor Installation

5. **POSITION THE NEXT ROW OF SUPPORTS ACCORDING TO THE CHALK LINES** and support layout. The straight tab should “snap” under the first (previous) floor piece. After the supports in the row are correctly positioned, install the next floor piece by hooking the open channel edge (E) under the outside hooks (K) of the floor supports. Push down sharply on the edge of the floor piece until it snaps into the previous floor piece. (See [Figure 4C on Page 14.](#)) Continue this process for the rest of the floor cutting planks for center and intermediate wells as needed. See [Figure 7A on Page 21](#) for center well support locations.

NOTE: Whenever there is more than Dimension “B” divided by three inches ($B/3$) of plank unsupported beside the bin wall, there should be a support on that plank or a support on each of the planks adjacent to it such that no more than Dimension “B” divided by three inches ($B/3$) is unsupported. For example: 2.66" bin with 8 rings has a “B” dimension of 22". Take $22"/3 = 7.33$ " (Round to 7"). Therefore, there should be no more than 7" of unsupported floor plank.

6. Some floor planks will need to be spliced together. (See [Figure 8A on Page 22](#), [Figure 9A on Page 23](#) and [Plank Length Charts on Page 24.](#)) Install plank length A first, then install the corresponding plank length B by butting plank B up against plank A. Make sure the planks are supported by a grandstand on each side of the splice. Continue until floor is complete.

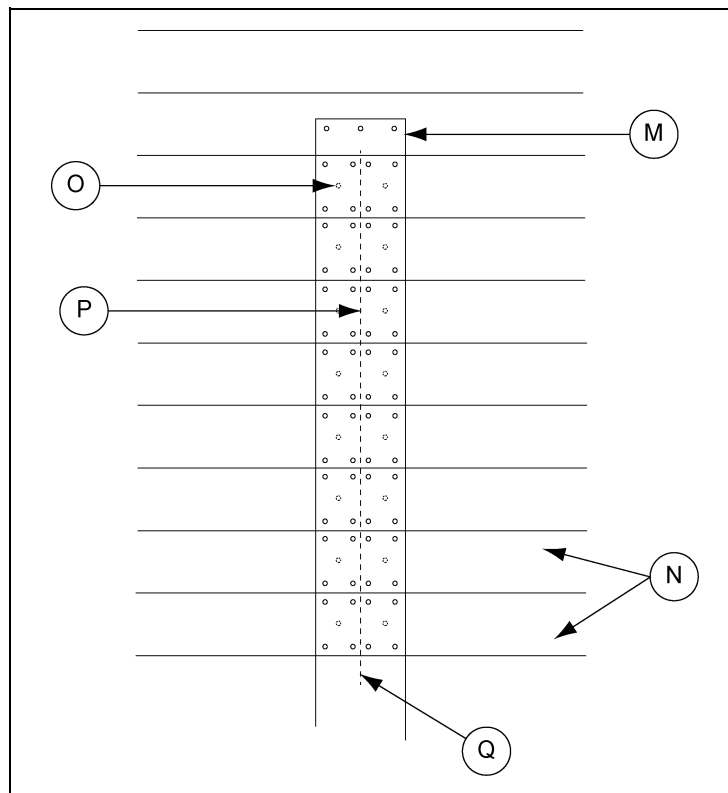


Figure 4D Oversplice Bolt Pattern for Small Grain Floors

Ref #	Description
M	Floor Oversplice Plate
N	Floor Planks
O	Self-Drilling Screw
P	Splice Seam
Q	NOTE: Dashed lines indicate items under the oversplice.

4. Recommended Method for Full Floor Installation

Undersplice Specifications

The undersplice should be installed underneath the planks at the split after both plank lengths have been butted together. Each splice has to be installed as each row of planks are installed. [Figure 4E](#) shows the layout of the undersplice plates (A) and the screw pattern used to secure them.

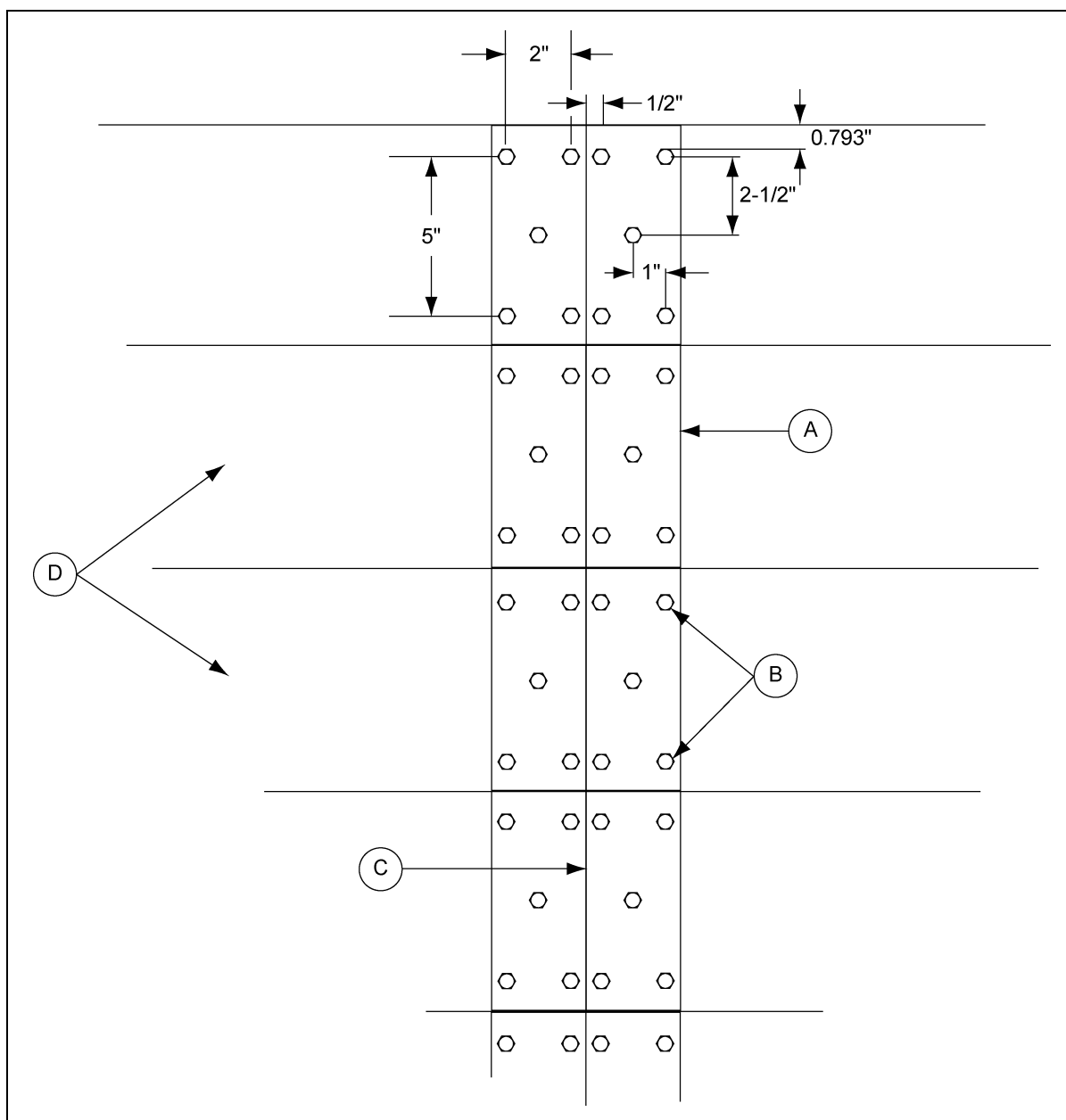


Figure 4E Specifications for installing the Undersplice to Floor Planks

Ref #	Part #	Description
A	PCL-7049	Undersplice Plate
B	S-280	Self-Tapping Screws
C		Denotes Split Plank
D		Cut-Lok/Cor-Lok Floor Planks

Installing the Undersplice

1. Place plank ends together.
2. Place the undersplice under the planks. Make sure the undersplice extends 3" across each plank. The splice should extend 3" under each plank. The splice should be screwed in place as shown in [Figure 4D on Page 15](#).
3. Repeat for all plank locations requiring a splice.

NOTE: *Small grain perforated floors include an oversplice that is installed at the same time as the undersplices.*

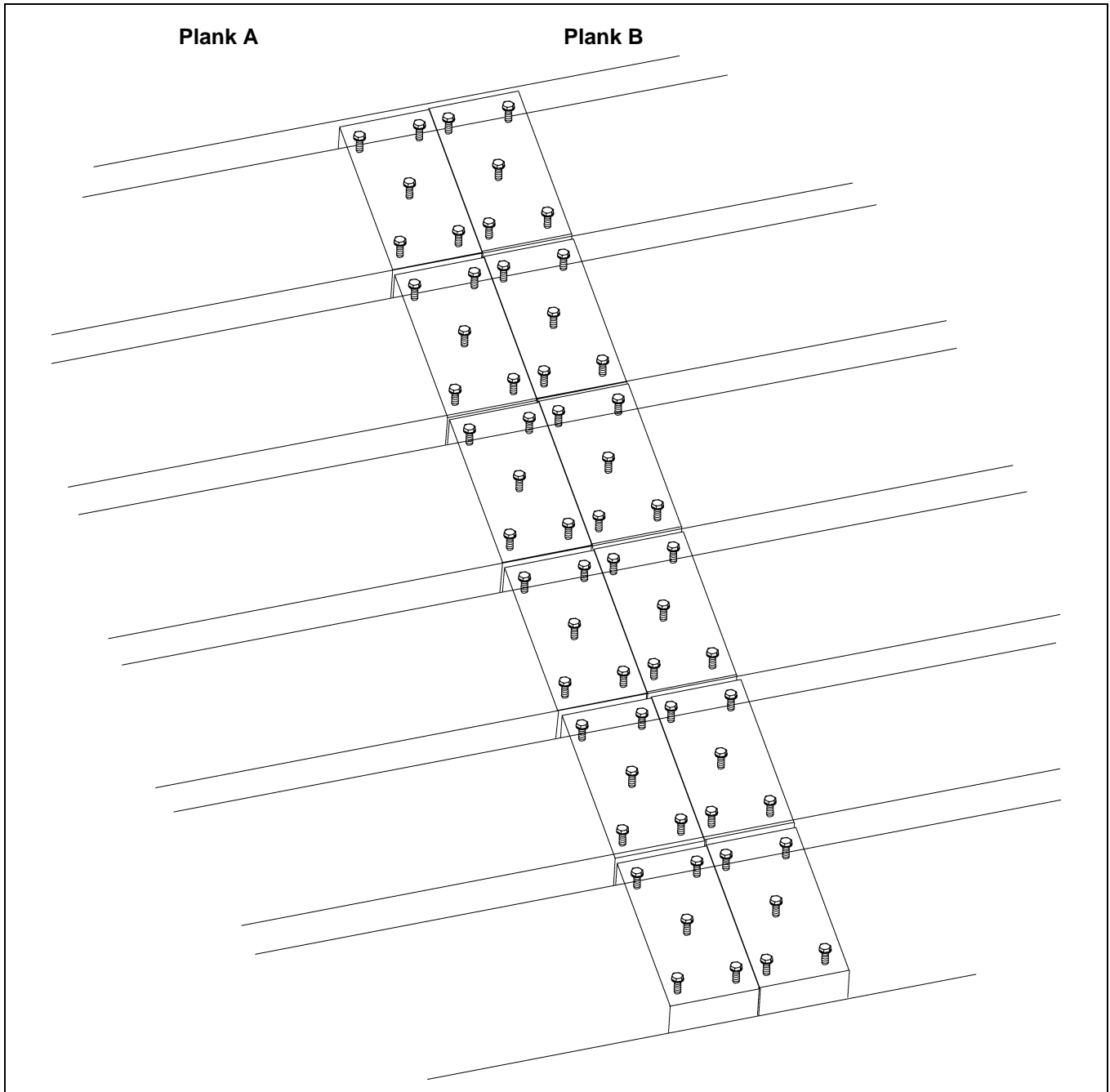


Figure 4F

4. Recommended Method for Full Floor Installation

Installing the Undersplice and Oversplice for Small Grain Floor Planks

- 1. Place plank ends together.
- 2. Place the undersplice (B) under the planks. Make sure the undersplice (B) extends 3" across each plank.
- 3. Install the undersplice (B) to the planks using two (2) self-tapping screws (C) per splice to hold it in place. (See Figure 4G.)
- 4. Place the oversplice (A) over the length of the plank splice seams.
- 5. Install the oversplice (A) to the planks and undersplices (B) using three (3) self-tapping screws (C) per each undersplice.

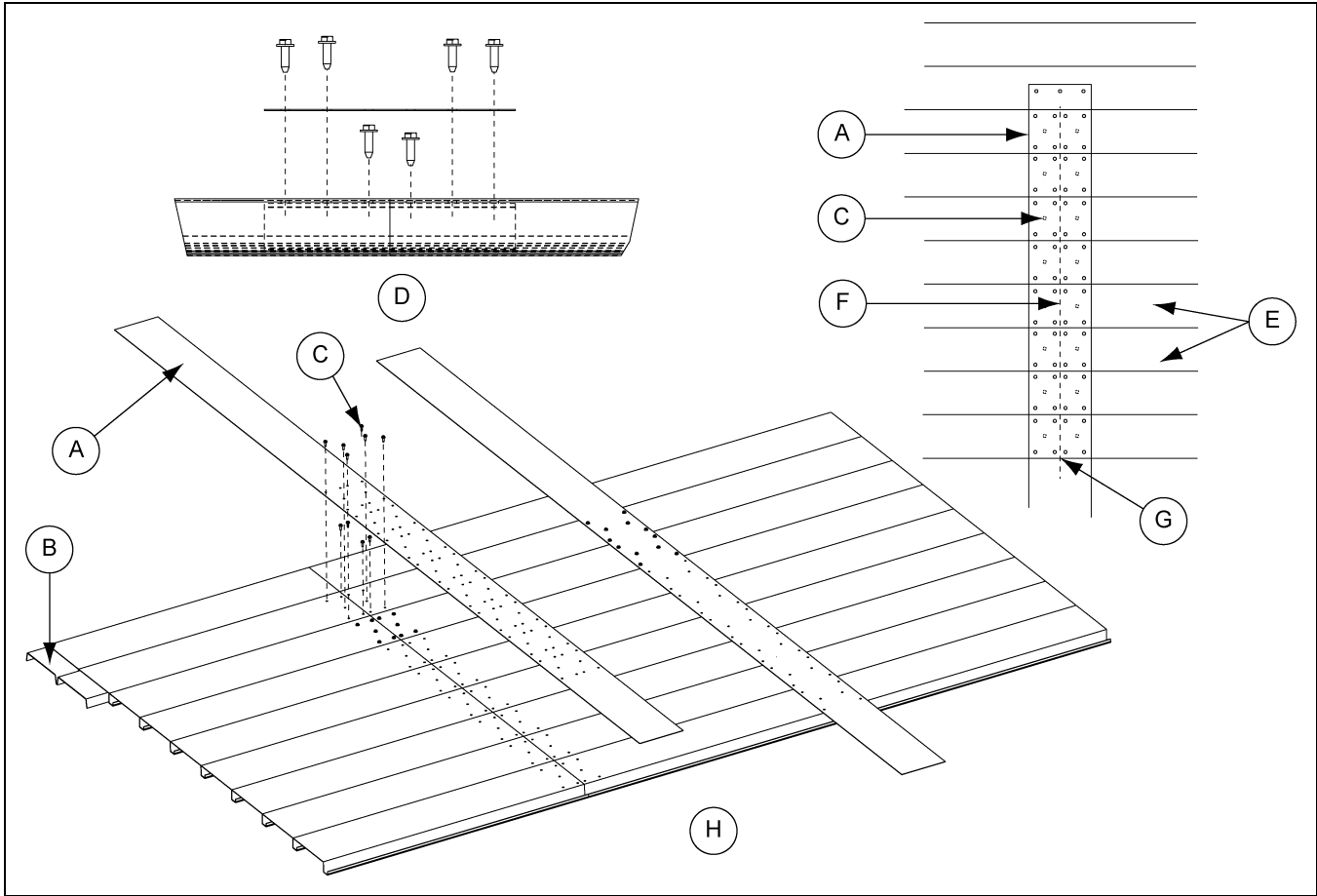


Figure 4G

Ref #	Description
A	Floor Oversplice (CLF-1763SG)
B	Undersplice (PCL-7049)
C	Self-Tapping Screw
D	Side View

Ref #	Description
E	Floor Planks
F	Splice Seam
G	NOTE: Dashed lines indicate items under the oversplice.
H	Isometric View

20 Gauge Grandstand Identification

20 Gauge	
Plenum Clearance	Grandstand Color Code
11-7/8"	Blue
14-3/8"	White
17-3/16"	Yellow

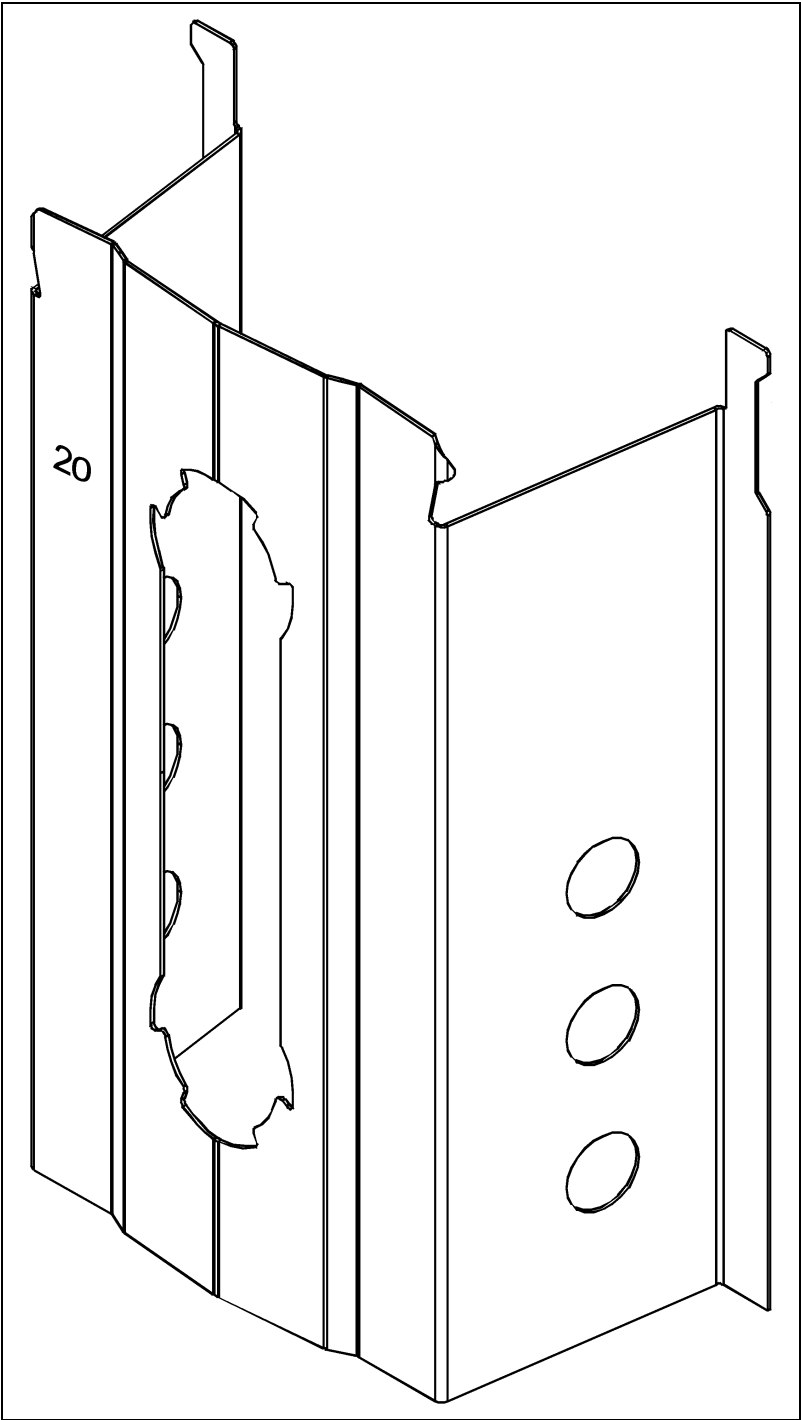


Figure 5A

6. Flashing Installation

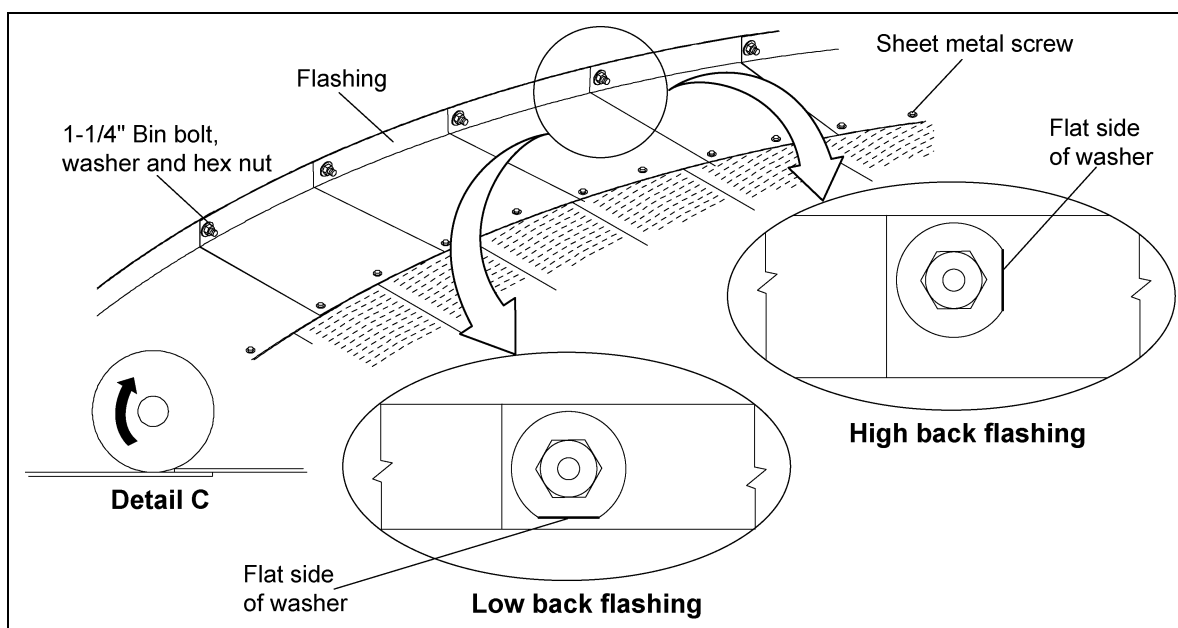


Figure 6A

Grain Systems Formed Flashing Installation

If a bin sweep auger will be used, overlap flashing (D) so that the sweep will climb up on to the next flashing (D) section when rotating (usually clockwise). *(See Figure 6A.)* This will prevent the rotating/slipping out wheel of the sweep from catching on the flashing edges. *(All GSI power sweeps and carry-in sweeps manufactured after April 2002 run clockwise.)*

After floor is in place, place 1-1/4" bolts through pre-punched holes in sidewall. Bolt heads should be on outside of bin. *(See Figure 6B)* to determine the correct sequence for placing the nuts and washers. Finger tighten the nuts until all flashing is installed, then go back and fully tighten. While holding the flashing flat and pushing in towards the bin wall, fasten the flashing (D) to the floor with two (2) sheet metal screws (E).

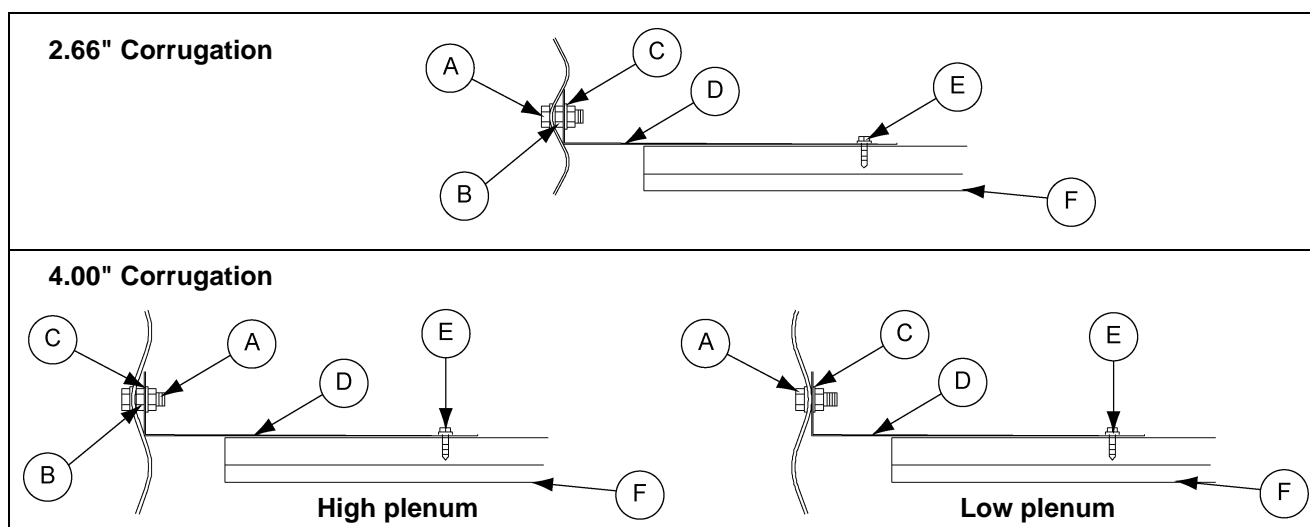


Figure 6B

Ref #	Description
A	Bin Bolt
B	Spacer Nut
C	Flat Washer

Ref #	Description
D	Flashing
E	Sheet Metal Screw
F	Flooring

7. Grandstand Layout at Center Well for Recirculating System

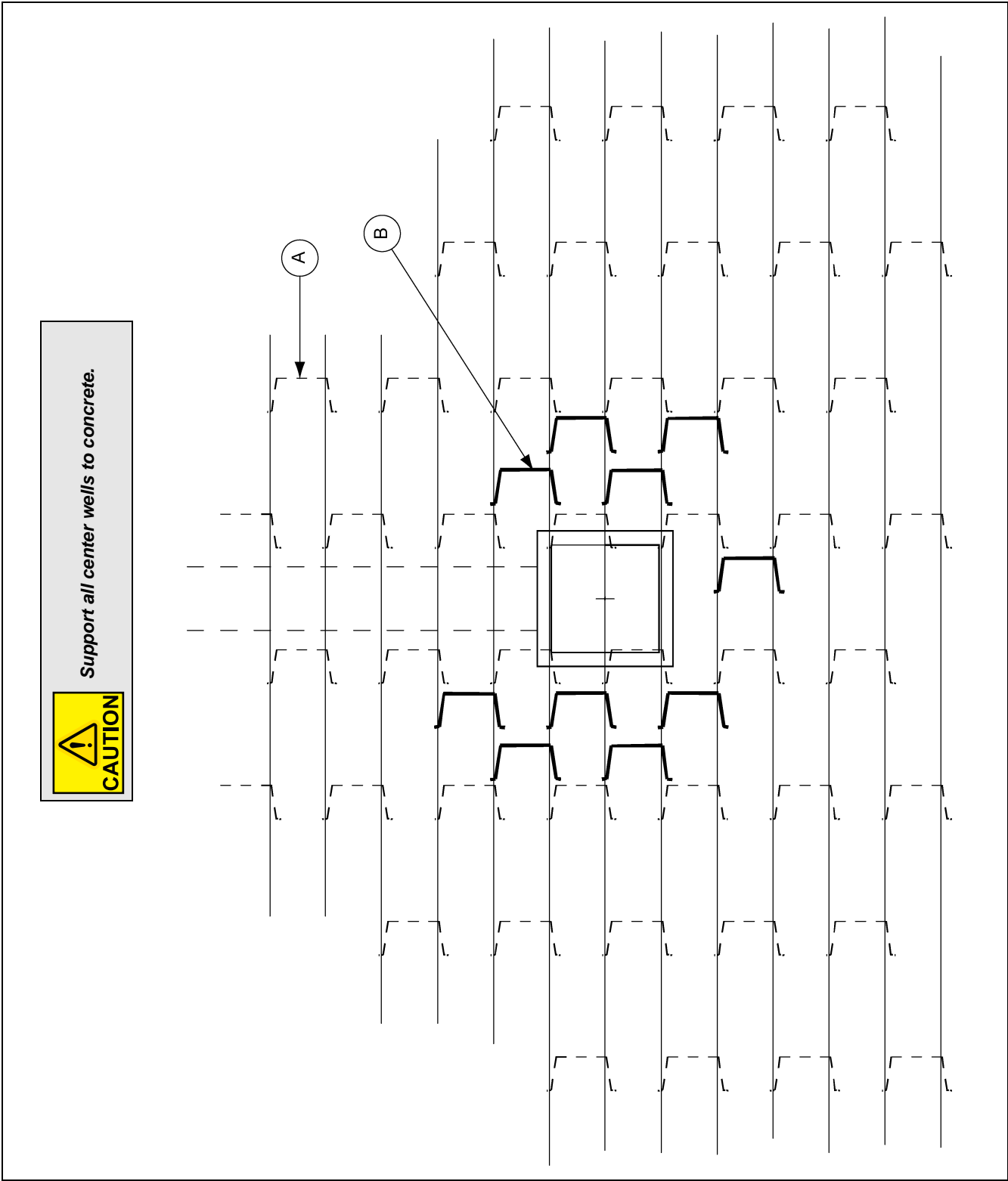


Figure 7A

Ref #	Description
A	See appropriate layout for spacing.
B	Approximate location for additional supports around center well.

Well Installation Plank Cut Detail for 42', 48' and 60' Split Floor

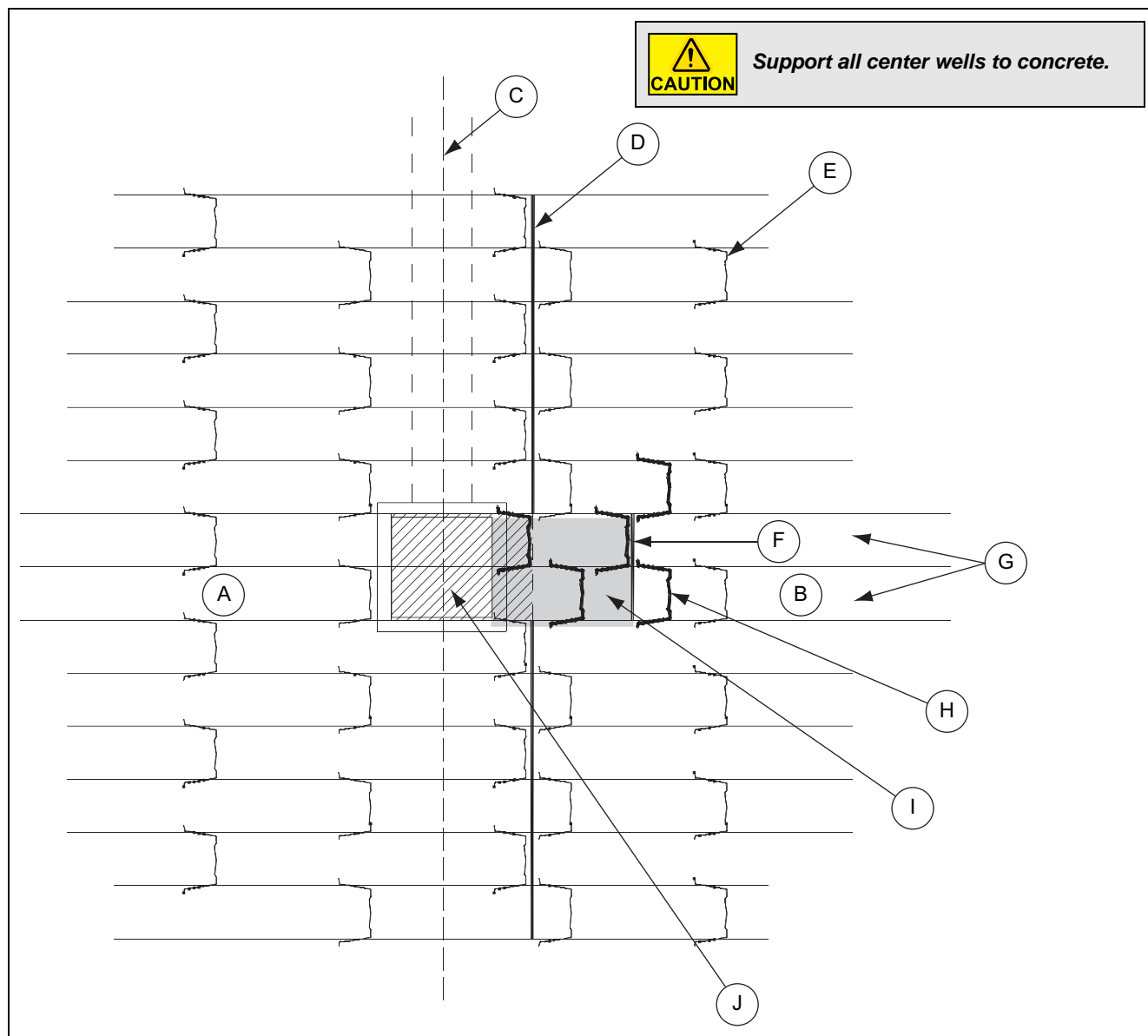


Figure 8A

Ref #	Description
A	Long Side
B	Short Side
C	Centerline of Bin
D	Standard Splice Location
E	See appropriate layout for grandstand spacing.
F	New Splice at Well Locations
G	Cut short side planks to allow fall of long pieces, cut for well installation to be installed opposite the long pieces on this side of the well as shown.
H	Additional Grandstands
I	Add entire cut pieces back in here with additional grandstands per plank as shown.
J	Cut these pieces for well installation.

42' Cut-Lok/Cor-Lok Plank Order

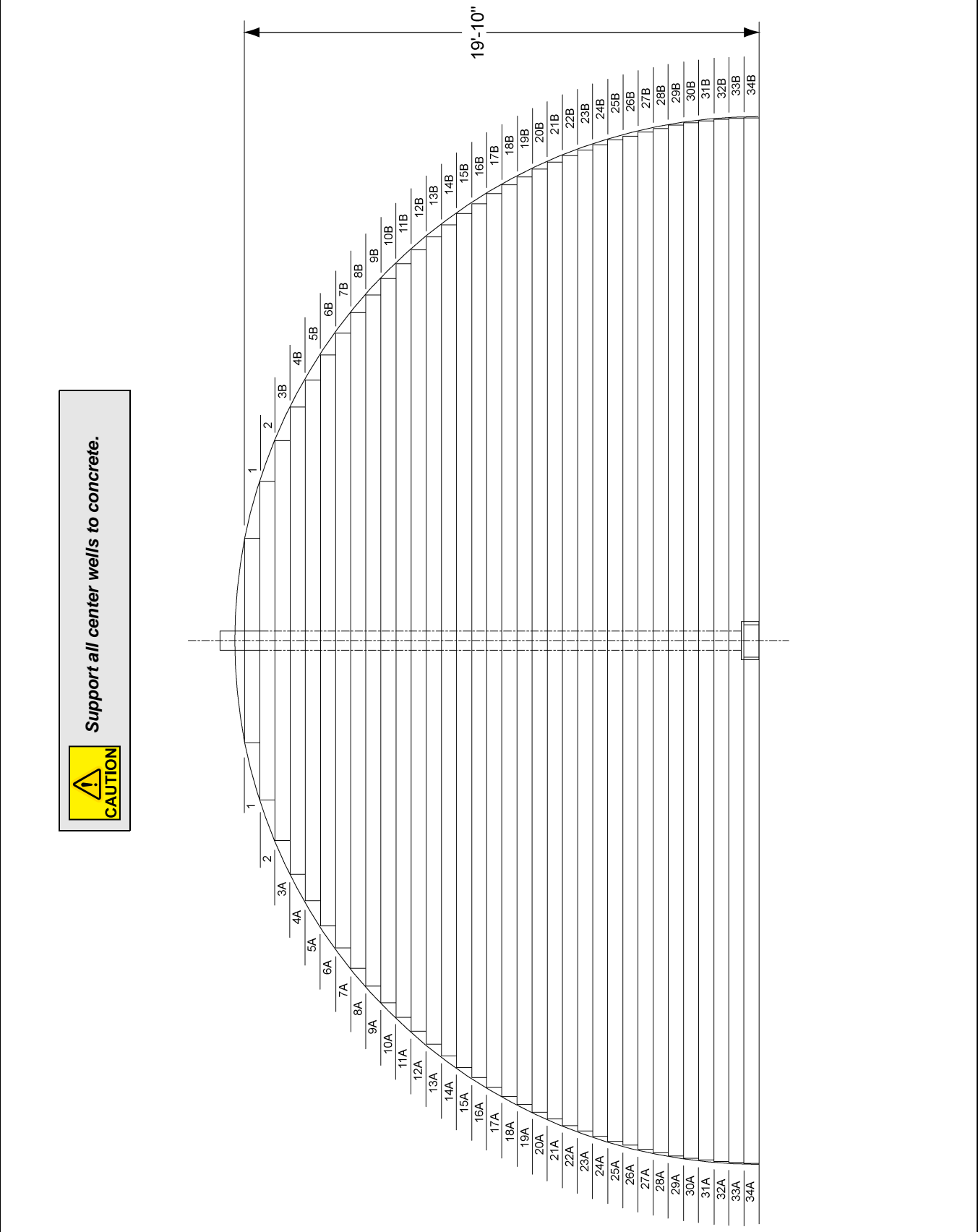


Figure 9A

10. Plank Lengths

42' 3" Split Plank Length

42' 3" Split Plank Length		
Plank #	Length (ft - in)	Length (Inches)
1	7'-10"	94"
2	12' - 3-1/2"	147-1/2"

Plank #	Length (ft - in)	Length (Inches)
3A	4' - 8-1/2"	56-1/2"
4A	12'-0"	144"
5A	7'-1/2"	84-1/2"
6A	14'-0"	168"
7A	8'-10"	106"
8A	15' - 7-1/2"	187-1/2"
9A	10'-4"	124"
10A	16' - 11-1/2"	203-1/2"
11A	11' - 6-1/2"	138-1/2"
12A	18'-1"	217"
13A	12'-7"	151"
14A	19'-1/2"	228-1/2"
15A	13' - 5-1/5"	161-1/2"
16A	19'-10"	238"
17A	14'-3"	171"
18A	20'-7"	247"
19A	14' - 10-1/2"	178-1/2"
20A	21' - 2-1/2"	254-1/2"
21A	15' - 5-1/2"	185-1/2"
22A	21' - 8-1/2"	260-1/2"
23A	15'-11"	191"
24A	22' - 1-1/2"	265-1/2"
25A	16'-4"	196"
26A	22' - 5-1/2"	269-1/2"
27A	16' - 7-1/2"	199-1/2"
28A	22'-9"	273"
29A	16' - 10-1/2"	202-1/2"
30A	23'-0"	276"
31A	17'-1/2"	204-1/2"
32A	23' - 1-1/2"	277-1/2"
33A	17'-2"	206"
34A	23'-2"	278"

Plank #	Length (ft - in)	Length (Inches)
3B	10' - 8-1/2"	128-1/2"
4B	6'-0"	72"
5B	13'-1/2"	156-1/2"
6B	8'-0"	96"
7B	14'-10"	178"
8B	9' - 7-1/2"	115-1/2"
9B	16'-4"	196"
10B	10' - 11-1/2"	131-1/2"
11B	17' - 6-1/2"	210-1/2"
12B	12'-1"	145"
13B	18'-7"	223"
14B	13'-1/2"	156-1/2"
15B	19' - 5-1/2"	233-1/2"
16B	13' - 10-1/2"	166-1/2"
17B	20'-3"	243"
18B	14'-7"	175"
19B	20' - 10-1/2"	250-1/2"
20B	15' - 2-1/2"	182-1/2"
21B	21' - 5-1/2"	257-1/2"
22B	15' - 8-1/2"	188-1/2"
23B	21'-11"	263"
24B	16' - 1-1/2"	193-1/2"
25B	22'-4"	268"
26B	16' - 5-1/2"	197-1/2"
27B	22' - 7-1/2"	271-1/2"
28B	16'-9"	201"
29B	22' - 10-1/2"	274-1/2"
30B	16' - 11-1/2"	203-1/2"
31B	23'-1/2"	276-1/2"
32B	17'-1"	205"
33B	23' - 1-1/2"	277-1/2"
34B	17'-2"	206"

42' 20 Gauge Grandstand Layout for Recirculating System Cut-Lok or 18 Gauge Cor-Lok Floors

2.66" Corrugated Bins 8 Rings Maximum and
4.00" Corrugated Bins 6 Rings Maximum

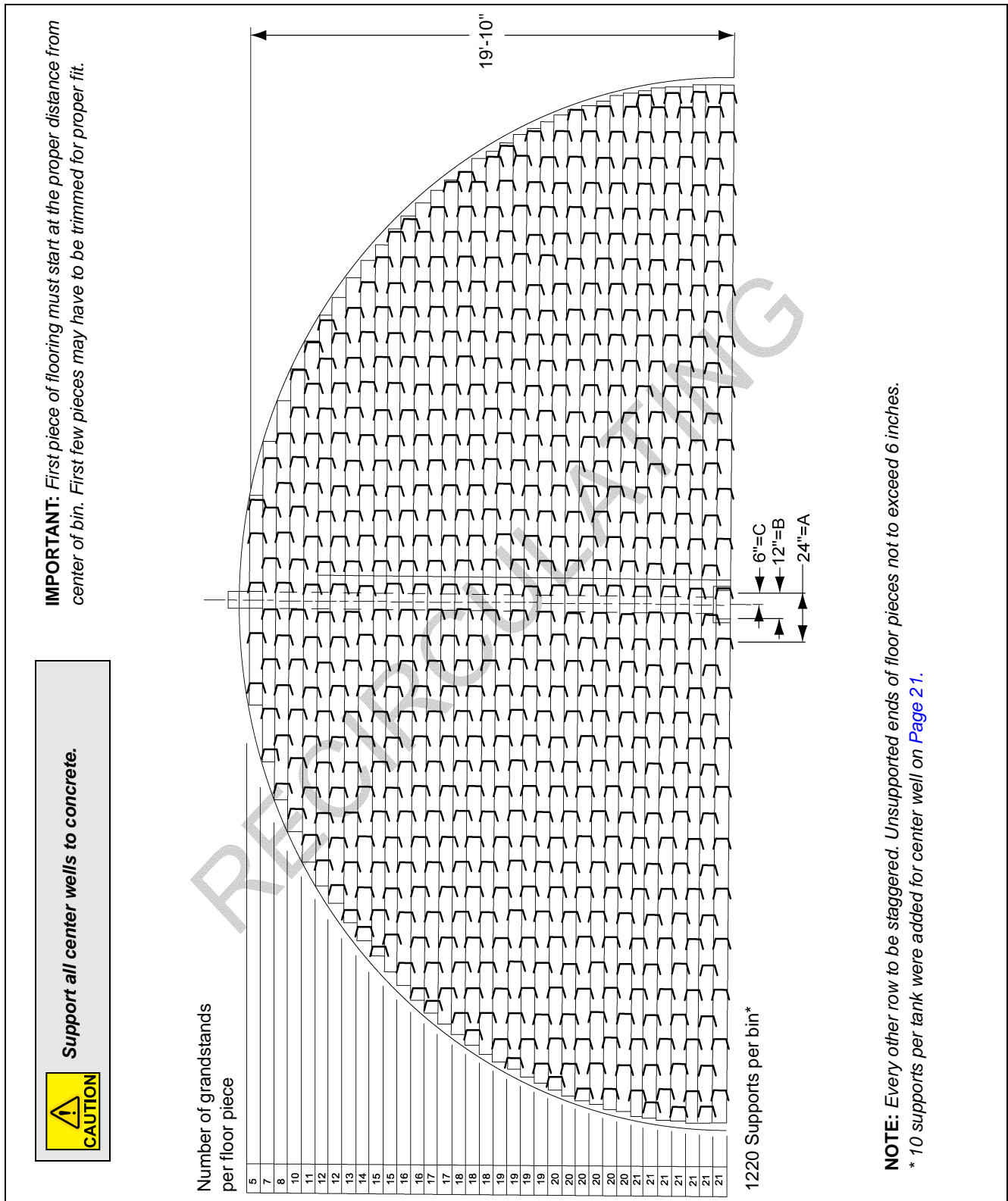


Figure 11A

PNEG-2153 42' Diameter Bin Recessed Full Floor Instructions

Figure 12A

42' Cor-Lok/Cut-Lok and 20 Gauge Grandstand Layout
2.66" Corrugated Bins 6 Rings and
4.00" Corrugated Bins 4 Rings and 5 Rings

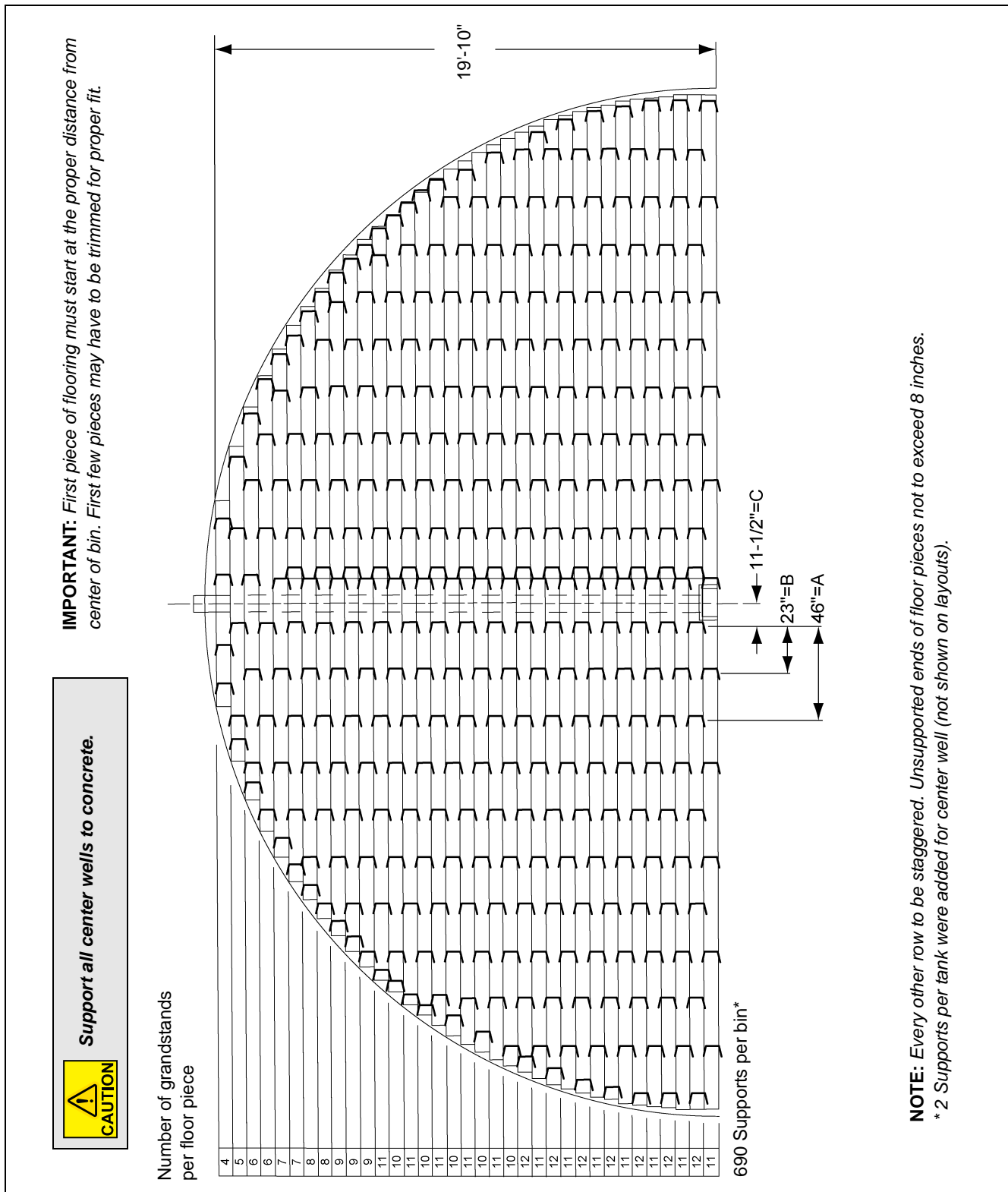


Figure 12B



42' Cor/Cut-Lok and 20 Gauge Grandstand Layout
2.66" Corrugated Bins 8 Rings and 4.00" Corrugated Bins 6 Rings

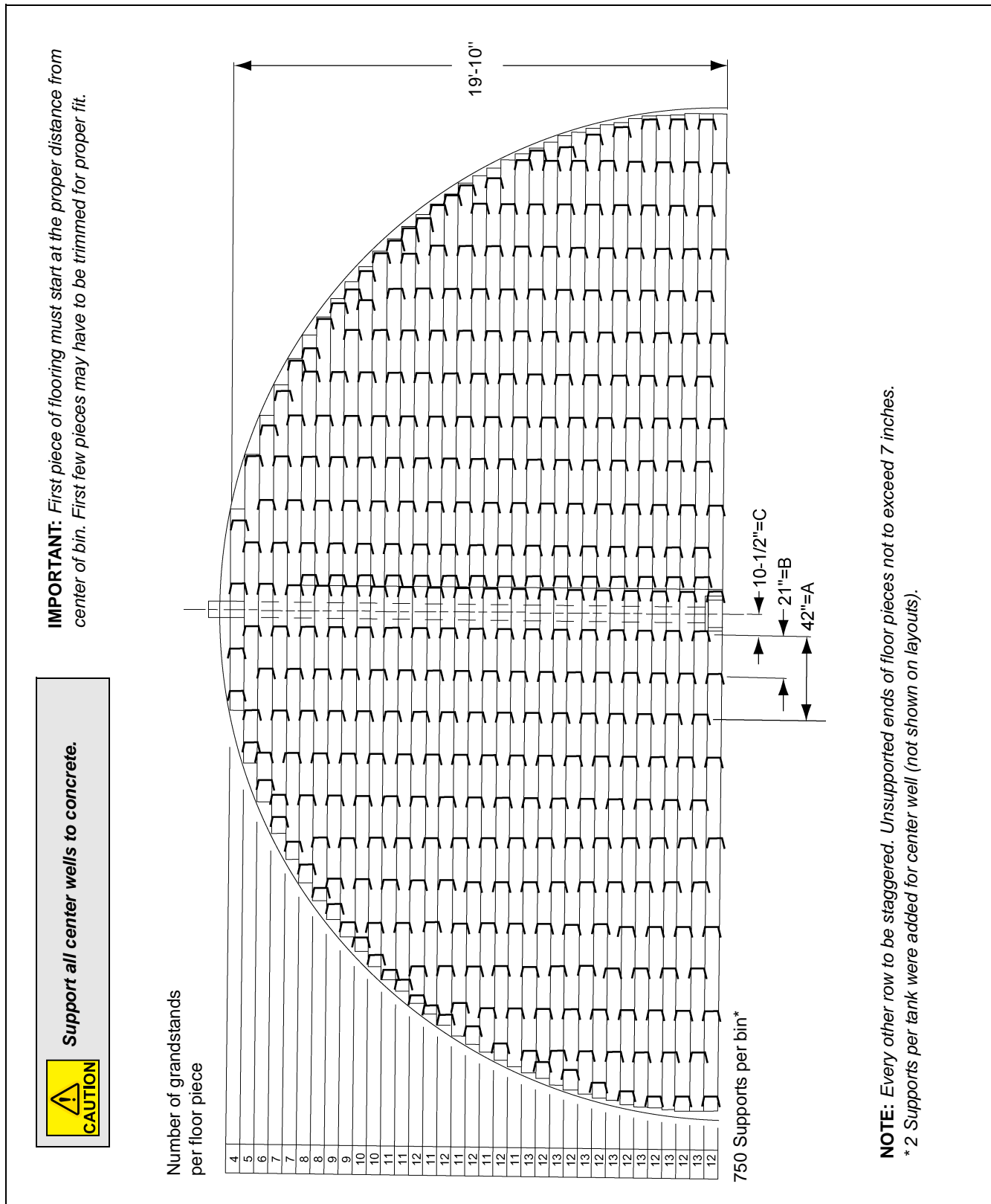


Figure 12D



42' Cor-Lok/Cut-Lok and 20 Gauge Grandstand Layout 2.66" Corrugated Bins 10 Rings and 4.00" Corrugated Bins 7 Rings

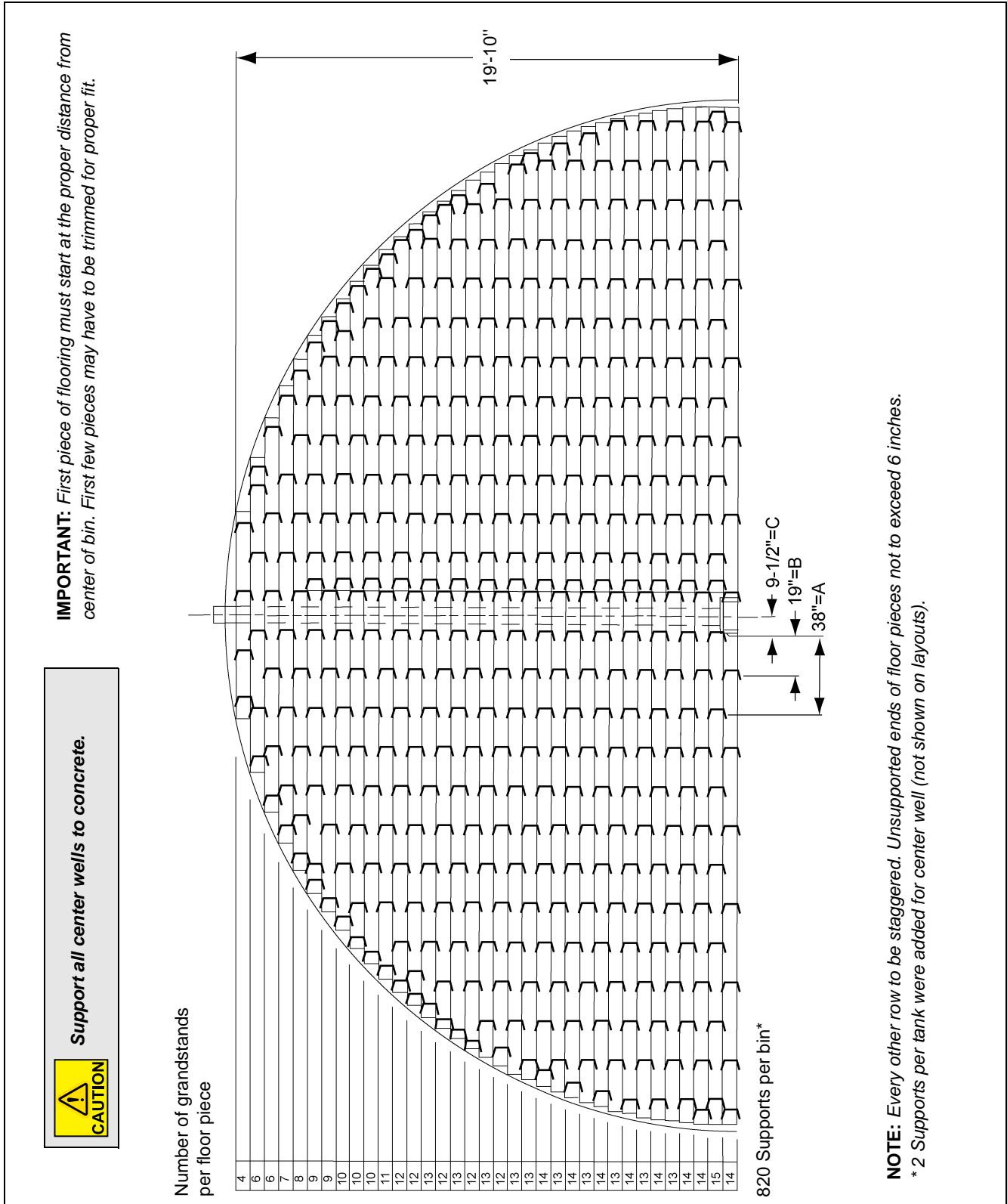


Figure 12F

PNEG-2153 42' Diameter Bin Recessed Full Floor Instructions



42' Cor-Lok/Cut-Lok and 20 Gauge Grandstand Layout 2.66" Corrugated Bins 12 Rings and 4.00" Corrugated Bins 9 Rings

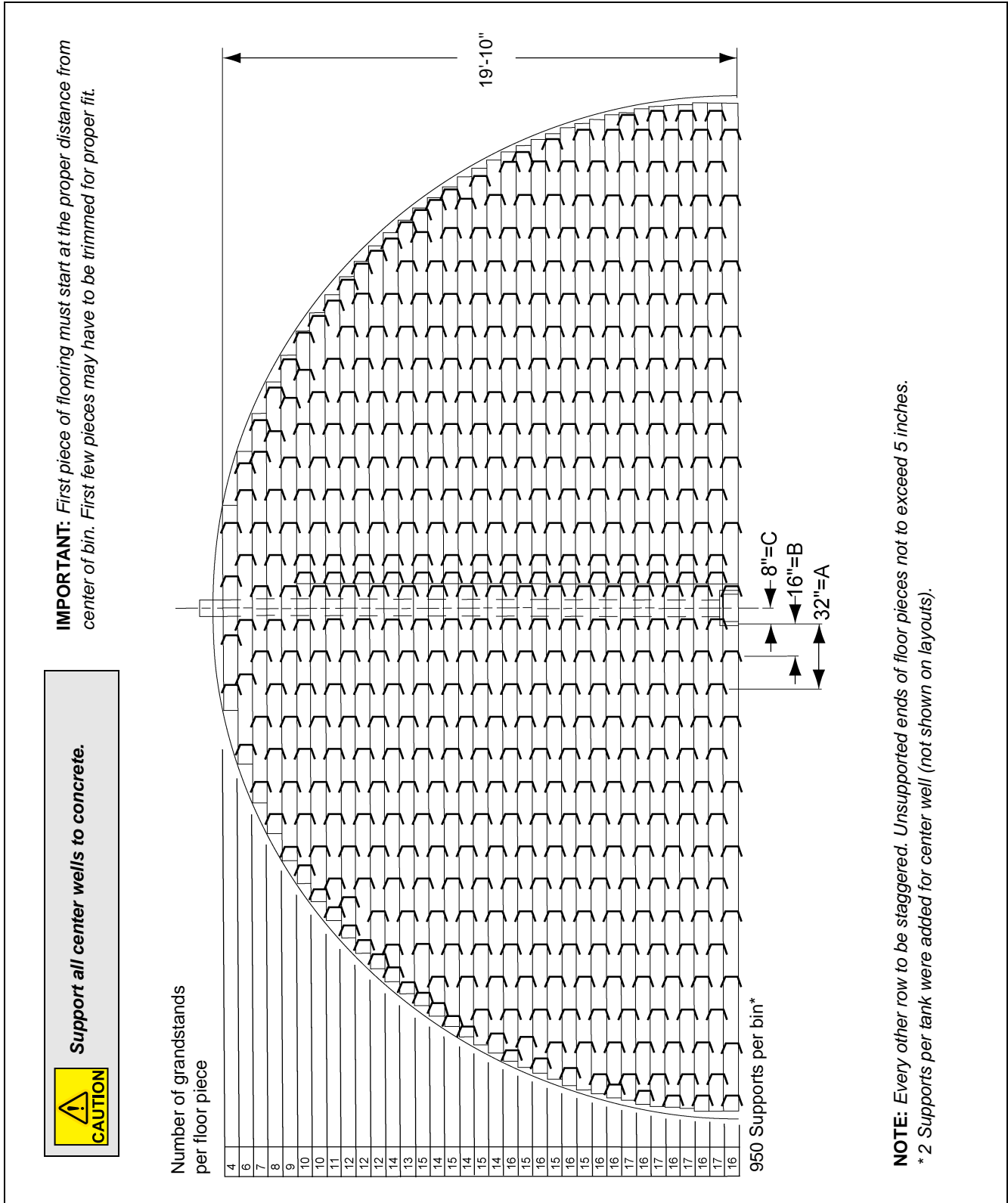


Figure 12H

13. 20 Gauge Floor Support Requirements

20 Gauge Grandstand Chart - 2.66" Corrugation

Narrow/2.66" Corrugation - 20 Gauge Grandstand Floor Support Chart

Full Floor Supports Required for Plank Type Flooring 2.66" Corrugation (* Based upon 13-1/2" or taller floor heights)																									
Dia.	12	15	18	21	24	27	30	33	36	39	42	45	48	54	60	72	75	78	90	105					
Rings	Support spacing support quantity															Floor styles list in order of increasing strength 18 Gauge Cor-Lok Cut-Lok									
3																									
57/27 62																			18 Gauge Cor-Lok or Cut-Lok if diameter and number of rings are in shaded area.						
4	54/27 62	58/29 80	54/27 120																						
5	54/27 62	58/29 80	54/27 120	52/26 160	56/28 205	54/27 249	54/27 304	50/25 390	50/25 470	50/25 576															
6	54/27 62	54/27 88	54/27 120	52/26 160	52/26 215	48/24 275	50/25 333	50/25 390	48/24 487	48/24 586	48/24 695	48/24 806	48/24 909	44/22 1196	44/22 1430										
7	54/27 62	52/26 96	48/24 138	50/25 168	48/24 225	48/24 275	48/24 347	46/23 425	44/22 523	46/23 606	44/22 735	44/22 836	44/22 933	42/21 1236	42/21 1477										
8	48/24 70	48/24 100	48/24 144	46/23 182	46/23 230	46/23 300	44/22 363	44/22 435	44/22 523	44/22 624	42/21 750	42/21 866	42/21 977	40/20 1296	40/20 1544										
9	48/24 70	48/24 100	42/21 144	42/21 190	42/21 243	44/22 303	42/21 387	40/20 465	40/20 565	42/21 656	40/20 790	40/20 906	40/20 1019	38/19 1346	36/18 1697										
10	42/21 75	42/21 110	42/21 144	42/21 190	42/21 250	40/20 309	40/20 397	40/20 479	38/19 597	38/19 716	38/19 820	36/18 986	36/18 1109	34/17 1486	34/17 1779										
11	42/21 75	42/21 110	42/21 144	42/21 190	40/20 265	40/20 319	38/19 417	36/18 525	36/18 620	36/18 746	34/17 900	34/17 1036	34/17 1163	32/16 1566	32/16 1883										
12	38/19 80	40/20 115	40/20 154	40/20 202	38/19 280	38/19 345	36/18 441	34/17 550	34/17 659	32/16 786	32/16 950	32/16 1096	32/16 1230	30/15 1660	30/15 1993	26/13 3300	26/13 3580	26/13 3870	24/12 5520	22/11 8110					
13	38/19 80	38/19 120	38/19 166	36/18 220	36/18 290	36/18 360	34/17 470	32/16 600	32/16 710	30/15 880	30/15 1010	30/15 1160	28/14 1390	28/14 1760	26/13 2300	24/12 3540	24/12 3840	24/12 4150	22/11 5960	20/10 8820					
14	34/17 90	34/17 130	34/17 180	34/17 230	34/17 300	34/17 380	32/16 500	30/15 630	30/15 750	28/14 930	28/14 1070	26/13 1310	26/13 1480	26/13 1870	24/12 2460	22/11 3820	22/11 4410	22/11 4480	20/10 6480	18/9 9680					
15	32/16 95	32/16 140	32/16 190	32/16 250	32/16 320	30/15 400	30/15 520	28/14 670	28/14 790	26/13 990	26/13 1140	24/12 1400	24/12 1590	24/12 2000	22/11 2650	22/11 3820	20/10 4500	20/10 4870	18/9 7120	18/9 9680					
16	30/15 100	30/15 150	30/15 205	30/15 260	28/14 360	28/14 450	26/13 550	26/13 670	24/12 840	24/12 1060	22/11 1220	22/11 1400	22/11 1710	20/10 2160	20/10 2880	20/10 4150	20/10 4500	18/9 5340	18/9 7120	16/8 10760					
17	28/14 106	28/14 160	28/14 215	26/13 290	26/13 380	26/13 480	26/13 590	26/13 710	24/12 900	24/12 1060	22/11 1320	22/11 1510	20/10 1860	20/10 2350	20/10 2880	18/9 4550	18/9 4950	18/9 5340	16/8 7910	16/8 10760					
18	26/13 110	26/13 170	24/12 240	24/12 310	24/12 400	24/12 510	24/12 630	22/11 760	22/11 900	22/11 1140	20/10 1320	20/10 1640	20/10 1890	18/9 2570	18/9 3170	16/8 5060	16/8 5500	16/8 5940	14/7 7910	14/7 12150					
19				24/12 180	24/12 240	22/11 340	22/11 440	22/11 550	22/11 680	22/11 820	20/10 970	20/10 1140	20/10 1430	18/9 1640	18/9 2040	16/8 3520	16/8 5060	16/8 5500	14/7 8920	14/7 12150					
20				22/11 190	22/11 260	22/11 340	22/11 440	20/10 550	20/10 740	20/10 890	20/10 1060	20/10 1240	18/9 1430	18/9 1800	16/8 2860	16/8 3520	16/8 5710	14/7 6200	14/7 8920	12/6 13990					
21						20/10 370	20/10 470	20/10 740	20/10 890	20/10 1060	20/10 1240	18/9 1570	18/9 1800	16/8 2270	16/8 2860	14/7 3970	14/7 5710	14/7 6200	12/6 10280	12/6 13990					
22						18/9 400	18/9 520	18/9 660	18/9 810	18/9 970	16/8 1160	16/8 1360	16/8 1570	16/8 2000	16/8 2270	14/7 2860	14/7 3970	12/6 6580	12/6 7140	12/6 10280					
23						18/9 400	16/8 520	16/8 660	16/8 810	16/8 970	16/8 1160	16/8 1290	16/8 1510	16/8 2000	14/7 2270	14/7 3230	12/6 3970	12/6 5800	12/6 7140						
24						16/8 450	16/8 580	16/8 730	16/8 900	16/8 1080	16/8 1290	16/8 1510	16/8 1740	14/7 2000	14/7 2560	12/6 3230	12/6 4570	12/6 6580	12/6 7140						
25						14/7 500	14/7 650	14/7 820	14/7 1010	14/7 1220	14/7 1450	14/7 1700	14/7 1960	12/6 2260	12/6 2560	12/6 3230	12/6 4570								
26								14/7 820	14/7 1010	14/7 1220	14/7 1450	14/7 1700	14/7 1960	12/6 2260	12/6 2560	12/6 3230	12/6 4570	Support spacing support quantity							
27								12/6 950	12/6 1160	12/6 1410	12/6 1670	12/6 1960	12/6 2260	12/6 2600	12/6 2950	12/6 3720	12/6 4570				Dura-lok floors and Monorail supports are required if diameter and number of rings are in bottom unshaded area.				
28								12/6 950	12/6 1160	12/6 1410	12/6 1670	12/6 1960	12/6 2260	12/6 2600	12/6 2950	12/6 3720									
29								12/6 950	12/6 1160	12/6 1410	12/6 1670	12/6 1960													

* For Aeration Systems recessed in the concrete, add one ring for proper spacing.

When using FL-3102-3 or FL-3102-6 (3", 6") Grandstands, increase the listed quantities by 33% (Standard Quantity x 1.33).

Quantities of Grandstands are minimum required for installation - Due to varying conditions and construction techniques at floor and wall penetrations, additional supports may need to be ordered.

How to read the chart: For example, a 12' diameter bin with 7 rings would have spacing of 54/27 (the top numbers). Meaning A=54" and B=27". The number of supports needed would be 62, (the bottom number).

20 Gauge Grandstand Chart - 4.00" Corrugation

Wide/4.00" Corrugation - 20 Gauge Grandstand Floor Support Chart

Full Floor Supports Required for Plank Type Flooring 4.00" Corrugation (* Based upon 13-1/2" or taller floor heights)																				
Dia.	12	15	18	21	24	27	30	33	36	39	42	45	48	54	60	72	75	78	90	105
Rings	Support spacing support quantity																			
3	54/27 62	58/29 80	54/27 120	52/26 150	56/28 202	54/27 249	50/25 333	50/25 390	50/25 470	50/25 576	46/23 695	52/26 735	48/24 869							
4	54/27 62	54/27 88	54/27 120	52/26 160	52/26 214	48/24 275	50/25 333	50/25 390	50/25 470	50/25 576	46/23 695	48/24 775	48/24 869	46/23 1156	44/22 1430					
5	54/27 62	52/26 96	48/24 138	50/25 168	48/24 224	48/24 275	48/24 347	46/23 425	44/22 523	46/23 606	46/23 695	44/22 836	44/22 933	42/21 1236	42/21 1477					
6	48/24 70	48/24 100	48/24 138	46/23 182	46/23 230	44/22 303	44/22 363	44/22 435	44/22 523	42/21 656	42/21 751	42/21 866	42/21 977	40/20 1296	38/19 1650					
7	42/21 75	42/21 110	42/21 144	42/21 190	42/21 249	42/21 309	42/21 387	40/20 480	40/20 565	40/20 686	38/19 821	38/19 946	38/19 1057	36/18 1416	34/17 1779					
8	42/21 75	42/21 110	42/21 144	42/21 190	40/20 265	40/20 319	38/19 417	36/18 525	36/18 620	36/18 746	34/17 900	34/17 1036	34/17 1163	32/16 1566	32/16 1883	28/15 3550	18 Gauge Cor-Lok or Cut-Lok if diameter and number of rings are in shaded area.			
9	38/19 80	40/20 115	38/19 166	38/19 220	38/19 277	36/18 355	34/17 471	34/17 555	32/16 695	32/16 830	32/16 951	30/15 1156	30/15 1303	30/15 1660	28/14 2160	28/15 3550				
10	36/18 90	34/17 130	34/17 180	34/17 230	34/17 300	34/17 380	32/16 500	32/16 600	30/15 750	28/14 930	30/15 1010	28/14 1230	28/14 1390	26/13 1870	24/12 2460	22/11 3820	22/11 4150	22/11 4480	20/10 6480	18/9 9680
11	32/16 95	30/15 150	32/16 190	32/16 250	32/16 320	32/16 400	30/15 520	30/15 650	28/14 790	26/13 990	26/13 1140	24/12 1400	24/12 1590	24/12 2000	22/11 2650	20/10 4150	20/10 4500	20/10 4870	18/9 7120	16/8 10760
12	28/14 100	28/14 160	28/14 210	28/14 280	28/14 360	28/14 450	28/14 550	28/14 670	26/13 840	24/12 1060	24/12 1220	22/11 1510	22/11 1710	20/10 2350	20/10 2880	18/9 4550	18/9 4950	18/9 5340	16/8 7910	16/8 10760
13	26/13 110	26/13 170	26/13 220	26/13 290	24/12 400	24/12 510	24/12 630	24/12 760	24/12 900	22/11 1140	22/11 1320	20/10 1640	20/10 1860	18/9 2570	18/9 3170	16/8 5060	16/8 5500	16/8 5940	16/8 7910	14/7 12150
14			22/11 260	22/11 340	22/11 440	22/11 550	22/11 680	22/11 820	20/10 1060	20/10 1240	20/10 1430	18/9 1800	18/9 2040	16/8 2860	16/8 3520	16/8 5060	16/8 5500	16/8 5940	14/7 8920	14/7 12150
15				20/10 370	20/10 480	20/10 600	20/10 740	20/10 890	20/10 1060	18/9 1360	18/9 1570	18/9 1800	16/8 2270	16/8 2860	16/8 3520	14/7 5710	14/7 6200	14/7 6710	14/7 8920	12/6 13990
16				18/9 400	18/9 520	18/9 660	18/9 810	18/9 970	18/9 1160	18/9 1360	18/9 1570	16/8 2000	16/8 2270	16/8 2860	14/7 3970	12/6 6580	12/6 7140	12/6 7730	12/6 10280	
17					16/8 580	16/8 730	16/8 900	16/8 1080	16/8 1290	16/8 1510	16/8 1750	16/8 2000	16/8 2270	14/7 3230	14/7 3970	12/6 6580	12/6 7140	12/6 7730		
18						16/8 580	16/8 730	16/8 900	16/8 1080	16/8 1290	16/8 1510	16/8 1750	16/8 2000	14/7 2560	14/7 3230	12/6 4570	Support spacing support quantity Dura-Lok floors and monorail supports are required if diameter and number of rings are in bottom unshaded area.			
19							14/7 820	14/7 1010	14/7 1220	14/7 1450	14/7 1700	14/7 1970	14/7 2260	14/7 2560	12/6 3720	12/6 4570				
20								12/6 950	12/6 1160	12/6 1410	12/6 1670	12/6 1960	12/6 2270	12/6 2600	12/6 2950					
21									12/6 950	12/6 1160	12/6 1410	12/6 1670	12/6 1960	12/6 2270	12/6 2600	12/6 2950				

* For Aeration Systems recessed in the concrete, add one ring for proper spacing.

When using FL-3102-3 or FL-3102-6 (3", 6") Grandstands, increase the listed quantities by 33% (Standard Quantity x 1.33).

Quantities of Grandstands are minimum required for installation - Due to varying conditions and construction techniques at floor and wall penetrations, additional supports may need to be ordered.

Floor styles in order of increasing strength are 18 gauge Cor-Lok, Cut-Lok, Dura-Lok.

How to read the chart: For example, a 12' diameter bin with 5 rings would have spacing of 54/27 (the top numbers). Meaning A=54" and B=27". The number of supports needed would be 62, (the bottom number).

14. Flashing Support at Stiffeners

Stiffener Flashing Support Instructions for Internal Universal Stiffeners

1. Install the floor and support system, cutting the floor to go around the internal stiffeners as required.
2. Break the stiffener flashing support (SS-6984) (A) into its three (3) components.
3. Lay the flashing supports (A) on top of the flooring and weld the flashing supports (A) to the stiffener as close as possible. Fasten the flashing to the wall, flashing support (A) and floor. Seal all spaces by welding or caulking.
4. Paint all welds with good quality zinc rich paint.
5. Stiffener flashing supports (SS-6984) (A) must be ordered separately from the standard floor and flashing.

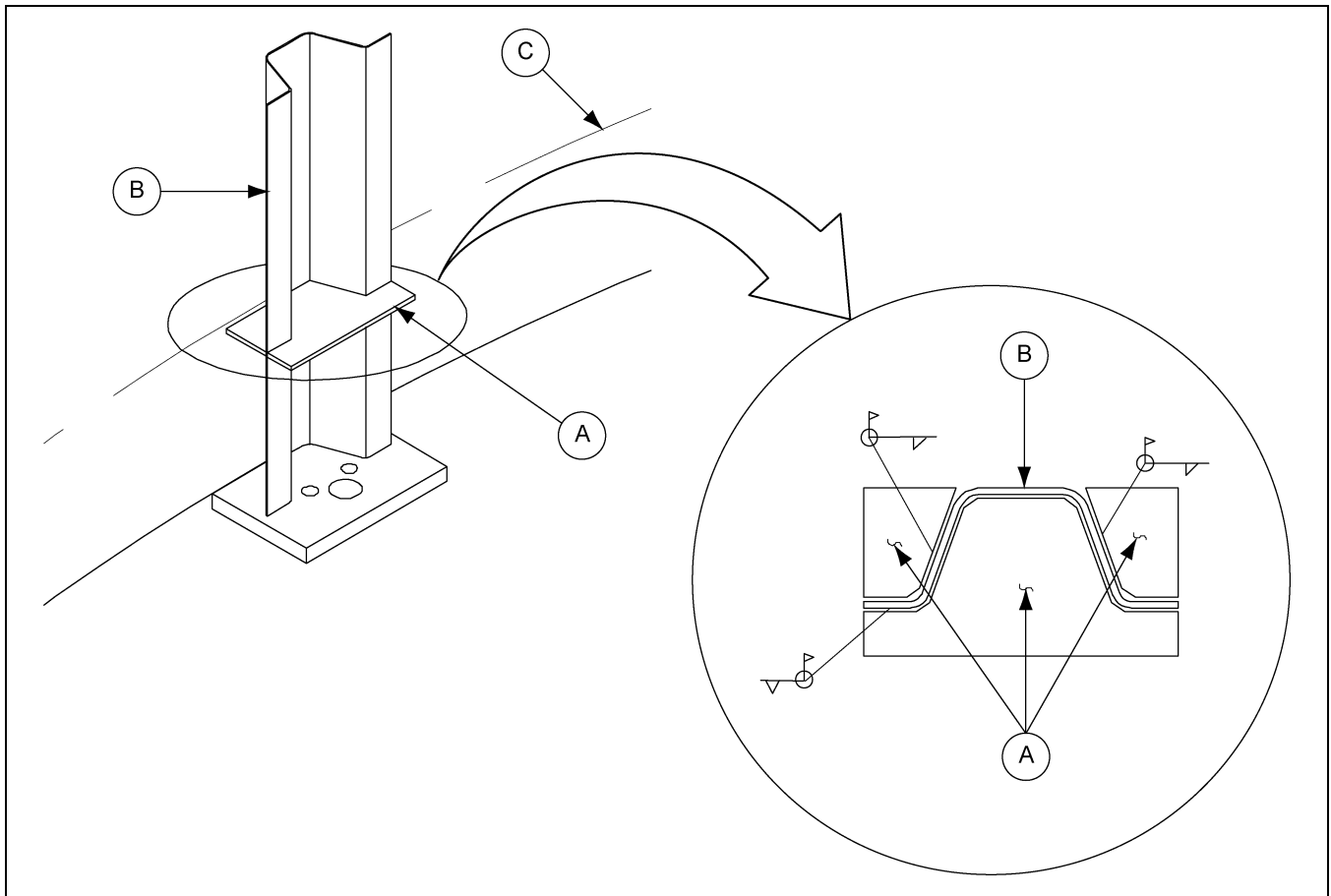


Figure 14A

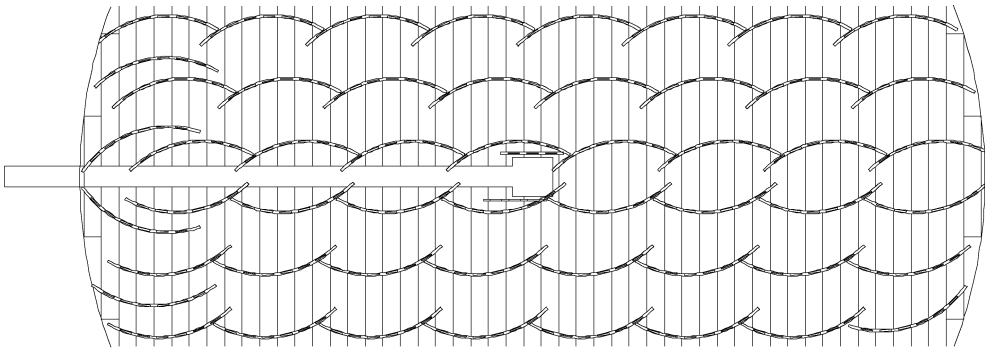
Ref #	Description
A	Stiffener Flashing Support (SS-6984)
B	Sidewall Stiffener
C	Top of Floor

Installation of Air Flow Supports

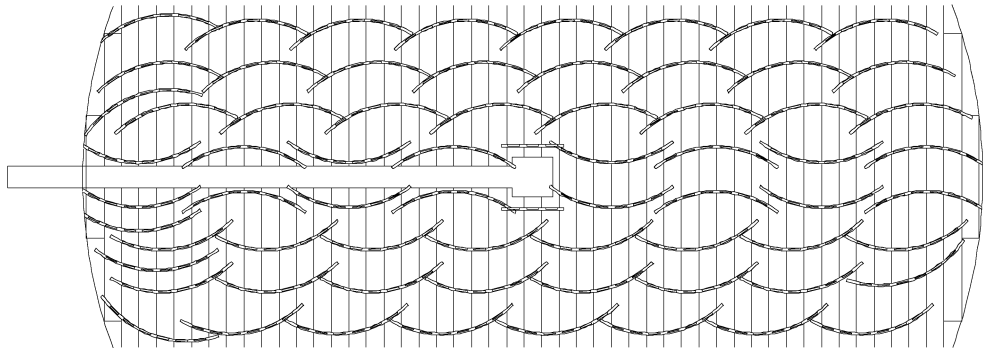
1. Determine the spacing and quantity of air flow supports required from the chart [on Page 39](#). Make sure that the correct supports have been ordered for use with the proper depth of plank (either 1-1/8" or 1-3/8" deep).
2. Mark center of bin.
3. Install discharge auger.
4. Mark spacing lines parallel to discharge auger.
5. Start on the side of the bin opposite from the discharge auger and place the first two (2) rows of supports on the spacing lines. Note that air flow supports are installed at an angle in an overlapping pattern so the ends will overlap. See floor layouts in [Figure 15B on Page 40](#).
6. Install the channel lock flooring on the first two (2) rows of supports and secure in place with bin wall flashing.
7. Finish placing supports on the spacing lines and installing floor planks.
 - a. Single supports are used next to the bin wall and at the ends of split floor planks in order to maintain the floor manufacturer's recommended minimum distance from the end of a plank to a support.
 - b. Double supports are used at the sump and along the sides of the discharge auger for spacing of 16" or less and for recirculating bin equipment.
 - c. Full supports may have to be overlapped or angled to provide support at walls and to maintain spacing and flashing requirements.

15. Air Flow Support Instructions

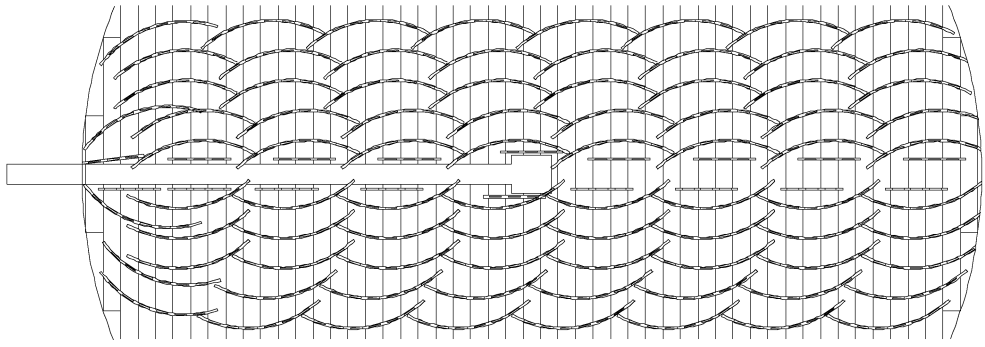
The following [Figure 15A](#) show methods of support placement to achieve the necessary spacing close to discharge augers and sumps.



24"-30" Spacing



16"-24" Spacing



Under 16" spacing

Figure 15A

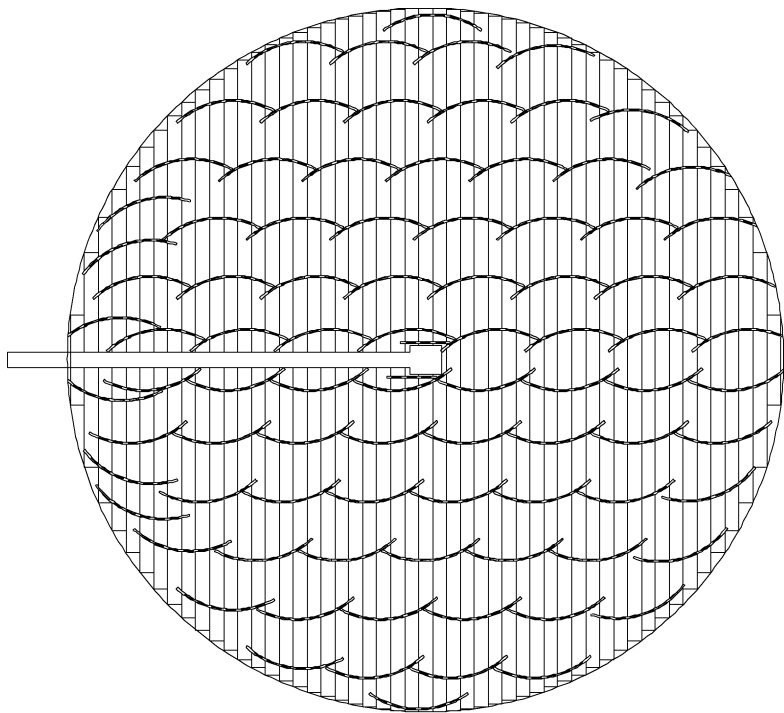
*Installation, Spacing and Quantities of Air Flow Supports Under Channel Lock Floors

Bin Diameter - Number of Supports																
Grain Depth at Bin Wall (ft.)	Spacing (in.)	18 Ft. Dia.			21 Ft. Dia.			24 Ft. Dia.			27 Ft. Dia.			30 Ft. Dia.		
		Full	Double	Single	Full	Double	Single	Full	Double	Single	Full	Double	Single	Full	Double	Single
18'	30"	34	2	8	48	2	10	60	2	12	84	2	14	88	2	14
24'	26"	36	2	8	56	2	10	74	2	12	92	2	14	104	2	14
27'	24"	44	2	8	62	2	10	76	2	12	92	2	14	112	2	14
32'	20"	54	2	10	64	2	12	84	2	14	106	2	16	130	2	18
40'	16"	58	10	14	80	12	16	104	14	18	128	16	20	160	18	22
48'	13"	72	10	16	98	12	20	126	14	22	158	16	24	190	18	28
53'	12"	76	10	18	106	12	22	140	14	24	172	16	28	210	18	30
68'	10"	86	10	22	116	12	26	156	14	28	212	16	32	250	18	36
16'	24" and 12"	68	10	8	82	12	10	104	14	12	120	16	14	140	18	14
(for Grain Flow)																

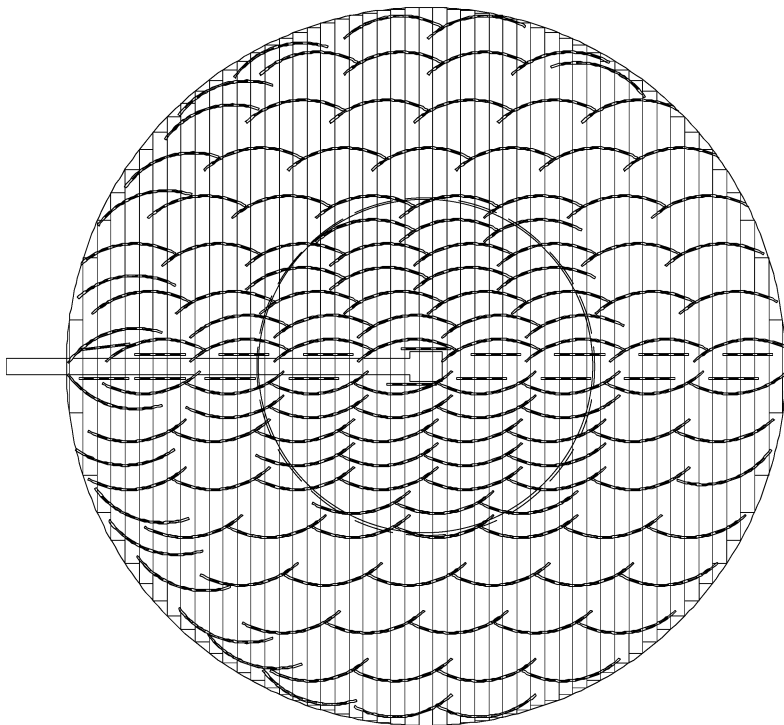
Bin Diameter - Number of Supports																
Grain Depth at Bin Wall (ft.)	Spacing (in.)	33 Ft. Dia.			36 Ft. Dia.			42 Ft. Dia.			48 Ft. Dia.			60 Ft. Dia.		
		Full	Double	Single	Full	Double	Single	Full	Double	Single	Full	Double	Single	Full	Double	Single
18'	30"	116	2	16	136	2	18	172	2	20	Use 24" Spacing			Use 24" Spacing		
24'	26"	124	2	16	144	2	18	200	2	20	Use 24" Spacing			Use 24" Spacing		
27'	24"	136	2	16	154	2	18	212	2	20	274	2	22	422	2	30
32'	20"	150	2	20	184	2	22	242	2	26	326	2	28	498	2	36
40'	16"	192	20	24	234	22	28	314	24	32	410	28	36	620	34	46
48'	13"	238	20	30	278	22	34	368	24	38	488	28	44	762	34	56
53'	12"	262	20	34	306	22	36	416	24	42	534	28	48	838	34	60
68'	10"	296	20	40	356	22	44	478	24	50	652	28	58	1024	34	72
16'	24" and 12"	168	20	16	188	20	18	264	24	20	350	28	20	N/A	N/A	N/A
(for Grain Flow)																

NOTES:

1. Use a maximum spacing of 16" for perforated corrugated flooring.
2. The number of supports listed is based on the maximum peaked capacity of each bin.
3. Use extra single supports for split floors.
4. Extra supports are required for grain recirculating equipment. Use the manufacturer's recommendation for the number and spacing of extra supports. **NOTE:** For grain flows, air flow supports are doubled in a 14' diameter in the center of the floor.
5. Contact a representative for air flow supports required for larger bins and deeper grain depths.
6. *Increase the number of supports by 5% when used with 6-3/4" wide mfs floor planks.



Example showing 30" spacing



Example showing 24" spacing with supports doubled (12" spacing) in the center for recirculating equipment.

Figure 15B

Installation, Spacing and Quantities of Air Flow Supports Under Channel Lock Floors York and Chief Bins

Bin Diameter - Number of Supports																
Grain Depth at Bin Wall (ft.)	Spacing (in.)	15' 6"			18' 7"			21' 8"			24' 9"			27' 10"		
		Full	Double	Single	Full	Double	Single	Full	Double	Single	Full	Double	Single	Full	Double	Single
18'	30"	26	2	8	36	2	8	50	2	10	64	2	12	80	2	14
24'	26"	30	2	8	42	2	8	56	2	10	74	2	12	92	2	14
27'	24"	32	2	8	44	2	8	60	2	10	78	2	12	98	2	14
32'	20"	38	2	10	52	2	10	72	2	12	92	2	14	116	2	16
40'	16"	46	10	14	64	12	14	86	14	16	114	14	18	142	16	20
48'	13"	54	10	16	78	12	16	106	14	20	136	14	22	172	16	24
53'	12"	58	10	18	84	12	18	114	14	22	148	14	24	184	16	28
68'	10"	70	10	22	98	12	22	134	14	26	174	14	28	220	16	32
16'	24" and 12"	60	10	8	72	12	8	88	14	10	106	14	12	126	16	14

(for Grain Flow)

Bin Diameter - Number of Supports																
Grain Depth at Bin Wall (ft.)	Spacing (in.)	31'			34'			37' 1"			40' 3"			43' 4"		
		Full	Double	Single	Full	Double	Single	Full	Double	Single	Full	Double	Single	Full	Double	Single
18'	30"	98	2	14	116	2	16	136	2	18	160	2	20	182	2	22
24'	26"	112	2	14	132	2	16	154	2	18	182	2	20	208	2	22
27'	24"	120	2	14	142	2	16	166	2	18	196	2	20	224	2	22
32'	20"	140	2	18	168	2	20	198	2	22	232	2	26	260	2	26
40'	16"	174	18	22	208	20	24	244	22	28	286	24	32	330	26	32
48'	13"	210	18	28	252	20	30	298	22	34	350	24	38	402	26	38
53'	12"	228	18	30	272	20	34	316	22	36	378	24	42	434	26	42
68'	10"	270	18	36	324	20	40	384	22	44	450	24	50	520	26	50
16'	24" and 12"	148	18	14	170	20	16	194	22	18	224	24	20	252	26	22

(for Grain Flow)

Bin Diameter - Number of Supports										
Grain Depth at Bin Wall (ft.)	Spacing (in.)	49' 6"			55' 8"			61' 10"		
		Full	Double	Single	Full	Double	Single	Full	Double	Single
18'	24"	288	2	28	362	2	32	444	2	36
24'	20"	346	2	28	436	2	32	536	2	36
27'	20"	346	2	28	436	2	32	536	2	36
32'	20"	346	2	28	436	2	32	536	2	36
40'	16"	428	28	36	540	32	42	664	36	46
48'	13"	524	28	44	660	32	52	812	36	56
53'	12"	566	28	48	714	32	54	878	36	60
68'	10"	676	28	58	852	32	68	1050	36	72

15. Air Flow Support Instructions

Installation, Spacing and Quantities of Air Flow Supports Under Channel Lock Floors Behlen Bins

Bin Diameter - Number of Supports													
Grain Depth at Bin Wall (ft.)	Spacing (in.)	16' 5"			19' 8"			22' 11"			26' 3"		
		Full	Double	Single	Full	Double	Single	Full	Double	Single	Full	Double	Single
18'	30"	30	2	8	42	2	10	56	2	12	70	2	14
24'	26"	32	2	8	46	2	10	64	2	12	80	2	14
27'	24"	36	2	8	50	2	10	68	2	12	86	2	14
32'	20"	42	2	10	60	2	12	80	2	14	102	2	16
40'	16"	50	10	14	72	12	16	98	14	18	124	16	20
48'	13"	60	10	16	88	12	20	118	14	22	152	16	24
53'	12"	66	10	18	94	12	22	126	14	24	164	16	28
68'	10"	78	10	22	110	12	26	150	14	28	194	16	32
16'	24" and 12"	64	10	8	78	12	10	96	14	12	114	16	14
(for Grain Flow)													

Bin Diameter - Number of Supports													
Grain Depth at Bin Wall (ft.)	Spacing (in.)	29' 6"			36' 1"			42' 8"			49' 3"		
		Full	Double	Single	Full	Double	Single	Full	Double	Single	Full	Double	Single
18'	30"	90	2	14	130	2	18	178	2	20	* 286	2	28
24'	26"	102	2	14	148	2	18	202	2	20	* 286	2	28
27'	24"	108	2	14	160	2	18	218	2	20	**344	2	28
32'	20"	128	2	18	188	2	22	260	2	26	344	2	28
40'	16"	158	18	22	232	22	28	320	24	32	426	28	36
48'	13"	192	18	28	282	22	34	390	24	38	520	28	44
53'	12"	206	18	30	306	22	36	422	24	42	562	28	48
68'	10"	246	18	36	364	22	44	504	24	50	670	28	58
16'	24" and 12"	136	18	14	188	22	18	246	24	20	N/A	N/A	N/A
(for Grain Flow)													

* Use 24" Spacing

** Use 20" Spacing

GSI Group, LLC Limited Warranty

The GSI Group, LLC ("GSI") warrants products which it manufactures to be free of defects in materials and workmanship under normal usage and conditions for a period of 12 months after sale to the original end-user or if a foreign sale, 14 months from arrival at port of discharge, whichever is earlier. The end-user's sole remedy (and GSI's only obligation) is to repair or replace, at GSI's option and expense, products that in GSI's judgment, contain a material defect in materials or workmanship. Expenses incurred by or on behalf of the end-user without prior written authorization from the GSI Warranty Group shall be the sole responsibility of the end-user.

Warranty Extensions:

The Limited Warranty period is extended for the following products:

	Product	Warranty Period	
AP Fans and Flooring	Performer Series Direct Drive Fan Motor	3 Years	* Warranty prorated from list price: 0 to 3 years - no cost to end-user 3 to 5 years - end-user pays 25% 5 to 7 years - end-user pays 50% 7 to 10 years - end-user pays 75%
	All Fiberglass Housings	Lifetime	
	All Fiberglass Propellers	Lifetime	
AP and Cumberland	Flex-Flo/Pan Feeding System Motors	2 Years	
Cumberland Feeding/Watering Systems	Feeder System Pan Assemblies	5 Years **	** Warranty prorated from list price: 0 to 3 years - no cost to end-user 3 to 5 years - end-user pays 50%
	Feed Tubes (1-3/4" and 2.00")	10 Years *	
	Centerless Augers	10 Years *	
	Watering Nipples	10 Years *	
Grain Systems	Grain Bin Structural Design	5 Years	
Grain Systems Farm Fans Zimmerman	Portable and Tower Dryers	2 Years	† Motors, burner components and moving parts not included. Portable dryer screens included. Tower dryer screens not included.
	Portable and Tower Dryer Frames and Internal Infrastructure †	5 Years	

GSI further warrants that the portable and tower dryer frame and basket, excluding all auger and auger drive components, shall be free from defects in materials for a period of time beginning on the twelfth (12th) month from the date of purchase and continuing until the sixtieth (60th) month from the date of purchase (extended warranty period). During the extended warranty period, GSI will replace the frame or basket components that prove to be defective under normal conditions of use without charge, excluding the labor, transportation, and/or shipping costs incurred in the performance of this extended warranty.

Conditions and Limitations:

THERE ARE NO WARRANTIES THAT EXTEND BEYOND THE LIMITED WARRANTY DESCRIPTION SET FORTH ABOVE. SPECIFICALLY, GSI MAKES NO FURTHER WARRANTY OF ANY KIND, EXPRESS OR IMPLIED, INCLUDING, WITHOUT LIMITATION, WARRANTIES OF MERCHANTABILITY OR FITNESS FOR A PARTICULAR PURPOSE OR USE IN CONNECTION WITH: (I) PRODUCT MANUFACTURED OR SOLD BY GSI OR (II) ANY ADVICE, INSTRUCTION, RECOMMENDATION OR SUGGESTION PROVIDED BY AN AGENT, REPRESENTATIVE OR EMPLOYEE OF GSI REGARDING OR RELATED TO THE CONFIGURATION, INSTALLATION, LAYOUT, SUITABILITY FOR A PARTICULAR PURPOSE, OR DESIGN OF SUCH PRODUCTS.

GSI shall not be liable for any direct, indirect, incidental or consequential damages, including, without limitation, loss of anticipated profits or benefits. The sole and exclusive remedy is set forth in the Limited Warranty, which shall not exceed the amount paid for the product purchased. This warranty is not transferable and applies only to the original end-user. GSI shall have no obligation or responsibility for any representations or warranties made by or on behalf of any dealer, agent or distributor.

GSI assumes no responsibility for claims resulting from construction defects or unauthorized modifications to products which it manufactured. Modifications to products not specifically delineated in the manual accompanying the equipment at initial sale will void the Limited Warranty.

This Limited Warranty shall not extend to products or parts which have been damaged by negligent use, misuse, alteration, accident or which have been improperly/inadequately maintained. This Limited Warranty extends solely to products manufactured by GSI.

Prior to installation, the end-user has the responsibility to comply with federal, state and local codes which apply to the location and installation of products manufactured or sold by GSI.

This equipment shall be installed in accordance with the current installation codes and applicable regulations, which should be carefully followed in all cases. Authorities having jurisdiction should be consulted before installations are made.



**1004 E. Illinois St.
Assumption, IL 62510-0020
Phone: 1-217-226-4421
Fax: 1-217-226-4420
www.gsiag.com**



GSI is a worldwide brand of AGCO Corporation.