



Installation of Leg to Sidewall for 15', 18' and 21' BFT

- When installing legs to sidewall, reverse normal insertion procedure on bolts. Place hex head and neoprene washer to inside of sidewall, leaving threaded portion of bolt protruding outward. This provides for a weather-tight seal at the leg attachment location.

NOTE: Insert bolts from inside to outside on all leg to tank connections.

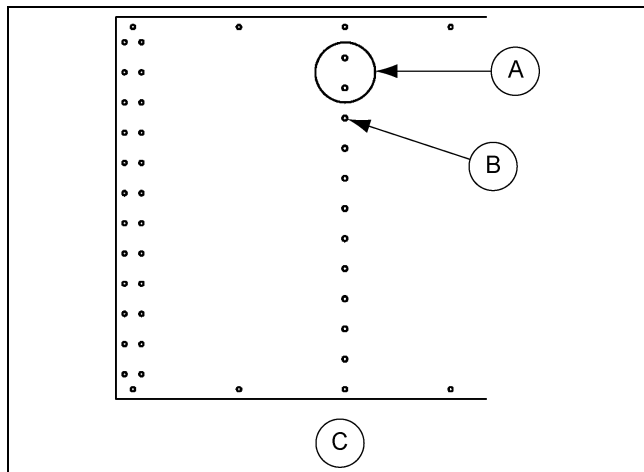


Figure 1 Plug Holes

Ref #	Description
A	Plug top two (2) holes above legs with flange bolt 3/8"-16 x 1" JS500 grade 8 or grade 8.2 with sealing washer (S-7487) and hex nut 3/8"-16 JS500 grade 5 (S-7489).
B	First Leg Attachment Hole
C	Second Ring Sidewall Sheet

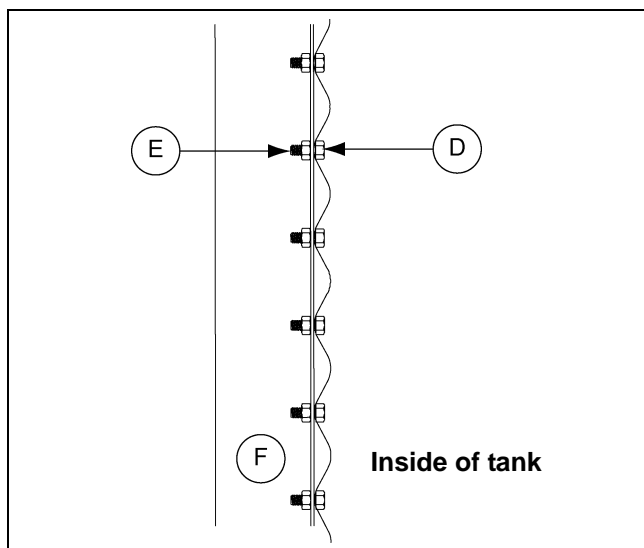


Figure 2

Ref #	Description
D	Flange Bolt 3/8"-16 x 1" JS500 Grade 8 or Grade 8.2 with Sealing Washer (S-7487)
E	Hex Nut 3/8"-16 JS500 Grade 5 (S-7489)
F	Leg



Figure 3 Installing legs to bin with bolt heads on the inside of bin and nuts on the outside.

