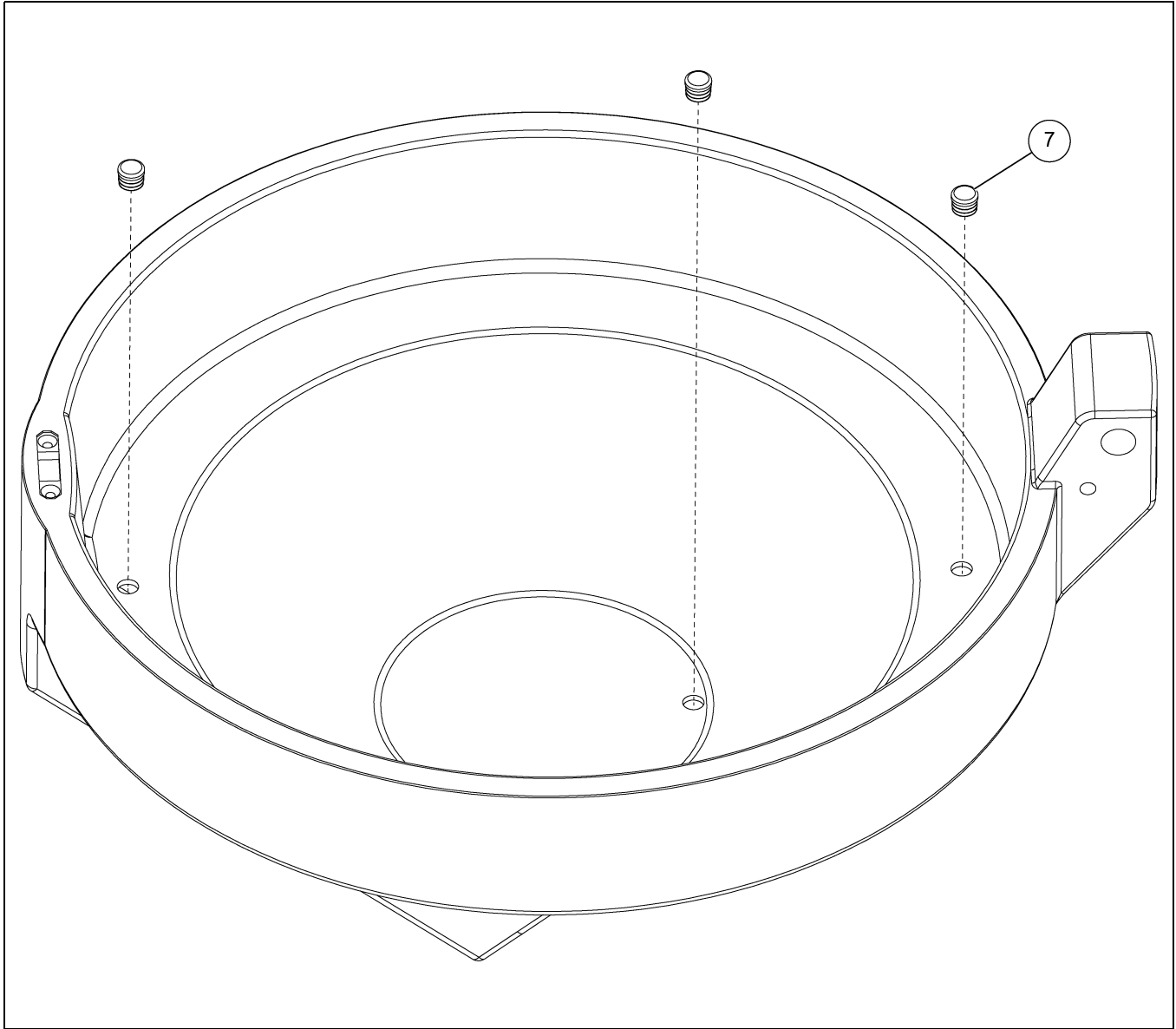




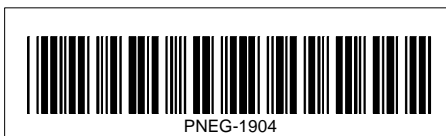
When using a pneumatic fill kit, it is necessary to install the sealing ring (5) and cap latch (10) components to the Bulk Feed Tank lid and peak collar. Use the following instructions to properly install these components.

1. Install plugs (7) as shown in *Figure 1*. Use a rubber mallet if necessary. The plugs (7) are required to keep feed from blowing into the lid cavity.



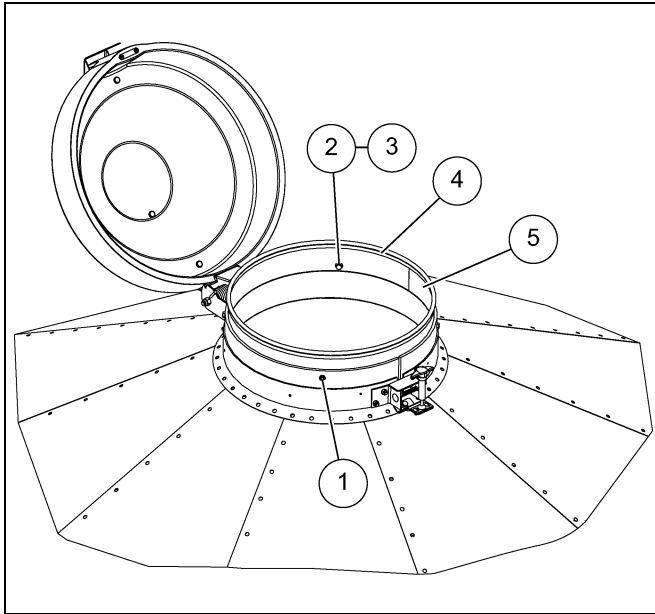
**Figure 1**

Ref #	Part #	Description
7	BLK-13319	BFT Lid Plug



## BFT Lid Cap Latch Installation

- Next, assemble the peak collar extension (5) as shown in [Figure 2](#). It is to be placed directly on top of the peak collar and then bolted to the existing rubber belting using standard bin hardware (2 and 3). It will be necessary to drill 3/8" diameter holes through the rubber belting (1).



**Figure 2**

Ref #	Part #	Description
1		Drill Ø 3/8" hole through rubber belting four (4) places.
2	S-10260	Flange Bolt 5/16"-18 x 1" JS500 Grade 8 or Grade 8.2 Full Thread with Sealing Washer
3	S-7484	Hex Nut 5/16"-18 JS500 Grade 5
4	BLK-10472	Peak Ring Seal Package
5	BLK-13316	BFT Pneumatic Fill Lid Sealing Ring

- Next, push the bulb seal strip over the hemmed edge of the peak collar extension. ([See Figure 3 and Figure 4.](#))

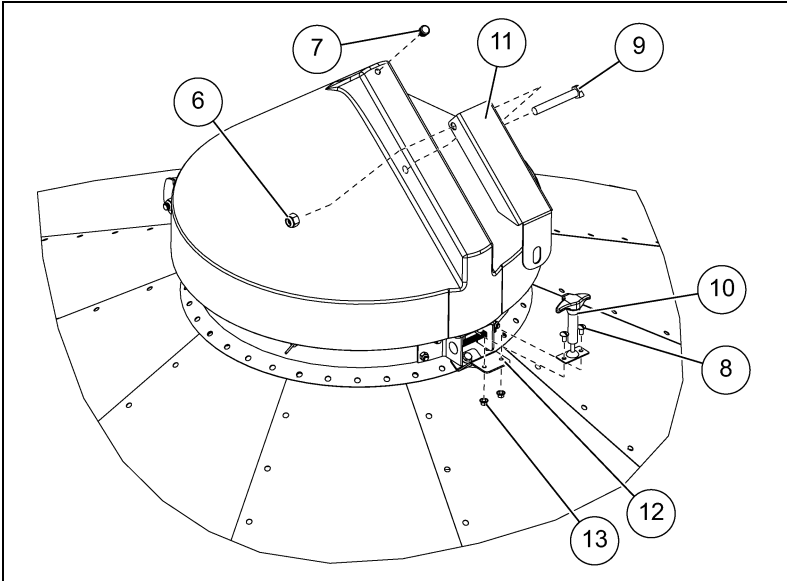


**Figure 3**



**Figure 4**

4. Install cap latch (10) components as shown in *Figure 5*. It may be necessary to remove the ground control arm (11) if lid ground control has been previously assembled on the tank.

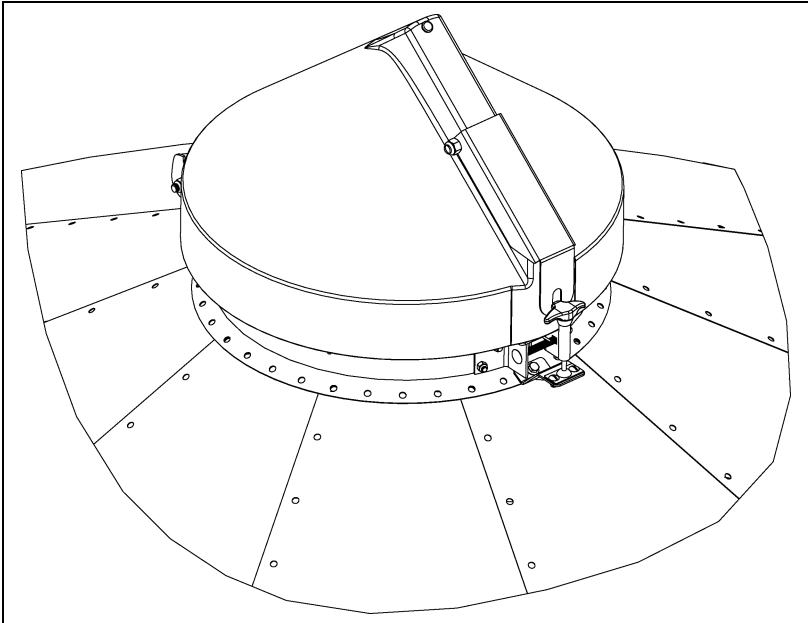


**Figure 5**

Ref #	Part #	Description
6	S-8260	Nylock Nut 1/2"-13 ZN Grade 5
7	BLK-13319	BFT Lid Plug
8	S-6674	Screw, MS 1/4"-20 x 1/2" THS ZN Grade 2
9	S-8314	Bolt, HHCS 1/2"-13 x 3-1/2" YDP Grade 8

Ref #	Part #	Description
10	CRP-4654	Hold-Down Cap
11	BLK-13318	BFT Cap Latch Arm
12	BLK-13315	BFT Rotomold Cap Latch Bracket
13	S-7215	Flange Nut 1/4"-20 ZN

5. *Figure 6* shows the finished latched cap (10).



**Figure 6 Completed Latch Cap**