



1004 East Illinois Street • Assumption, IL 62510 • 1-217-226-4421

Instructions BFT Lid Snow Guard Installation Instructions

Snow Guard Installation Instructions

1. Open bin lid to the full open position.
2. Install the Snow Guard brush (A) around the rubber belting (B) and position it down to the top of the clamp band (C).
3. Rotate the brush with the loose ends on each side of the striker plate (D). *(See Figure 1.)*

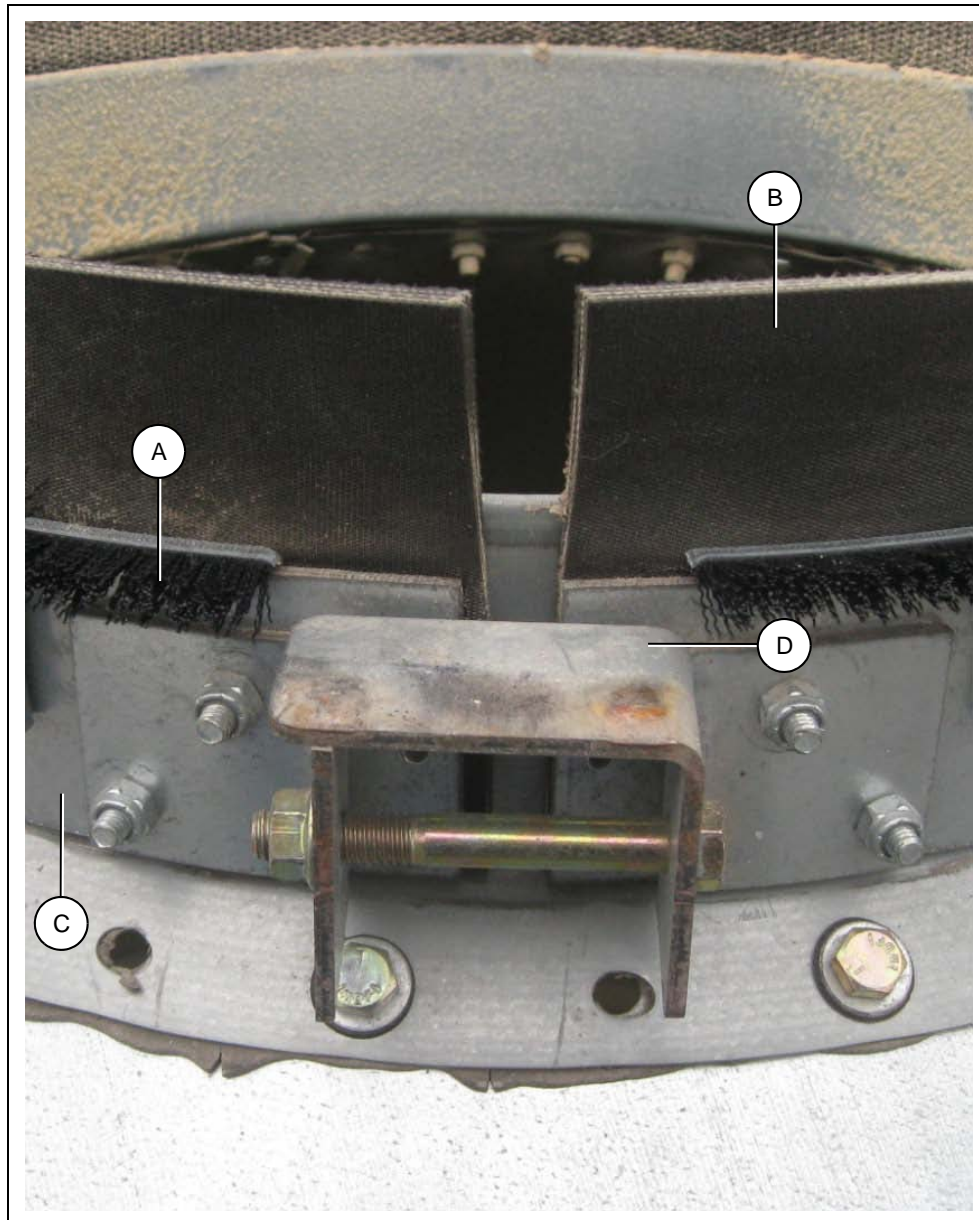


Figure 1



Snow Guard Installation Instructions (Continued)

4. Place a clamp (E) on each side of the striker plate (D) with the hook of the clamp positioned on the brush as shown in [Figure 2](#).
5. Install a self-drilling screw (F) through each clamp. ([See Figure 2.](#))

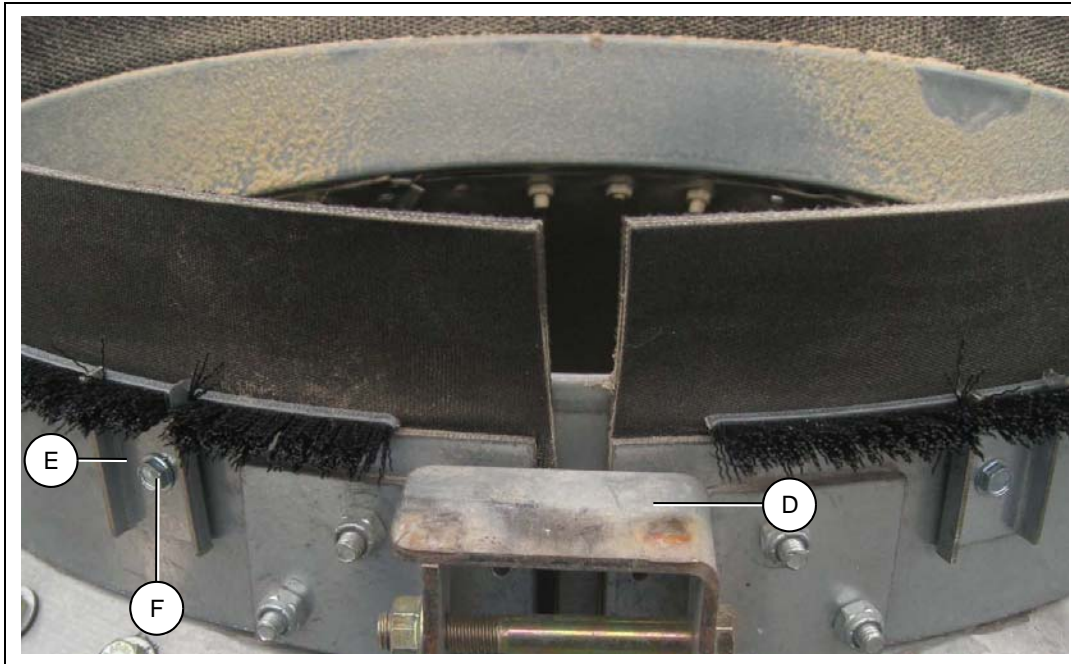


Figure 2

6. With the lid hinge (G) at the 12 o'clock position, place a clamp (E) at the 2 o'clock and 10 o'clock locations. Install a self-drilling screw (F) through each clamp. ([See Figure 3.](#))



Figure 3

Snow Guard Installation Instructions (Continued)

7. Close lid and inspect for proper fit. (*See Figure 4.*)



Figure 4

Ref #	Description
A	Snow Guard Brush
B	Rubber Belt
C	Clamp Band Bracket
D	Striker Plate
E	Clamp
F	Self-Drilling Screw
G	Lid Hinge

BFT Snow Guard Parts List

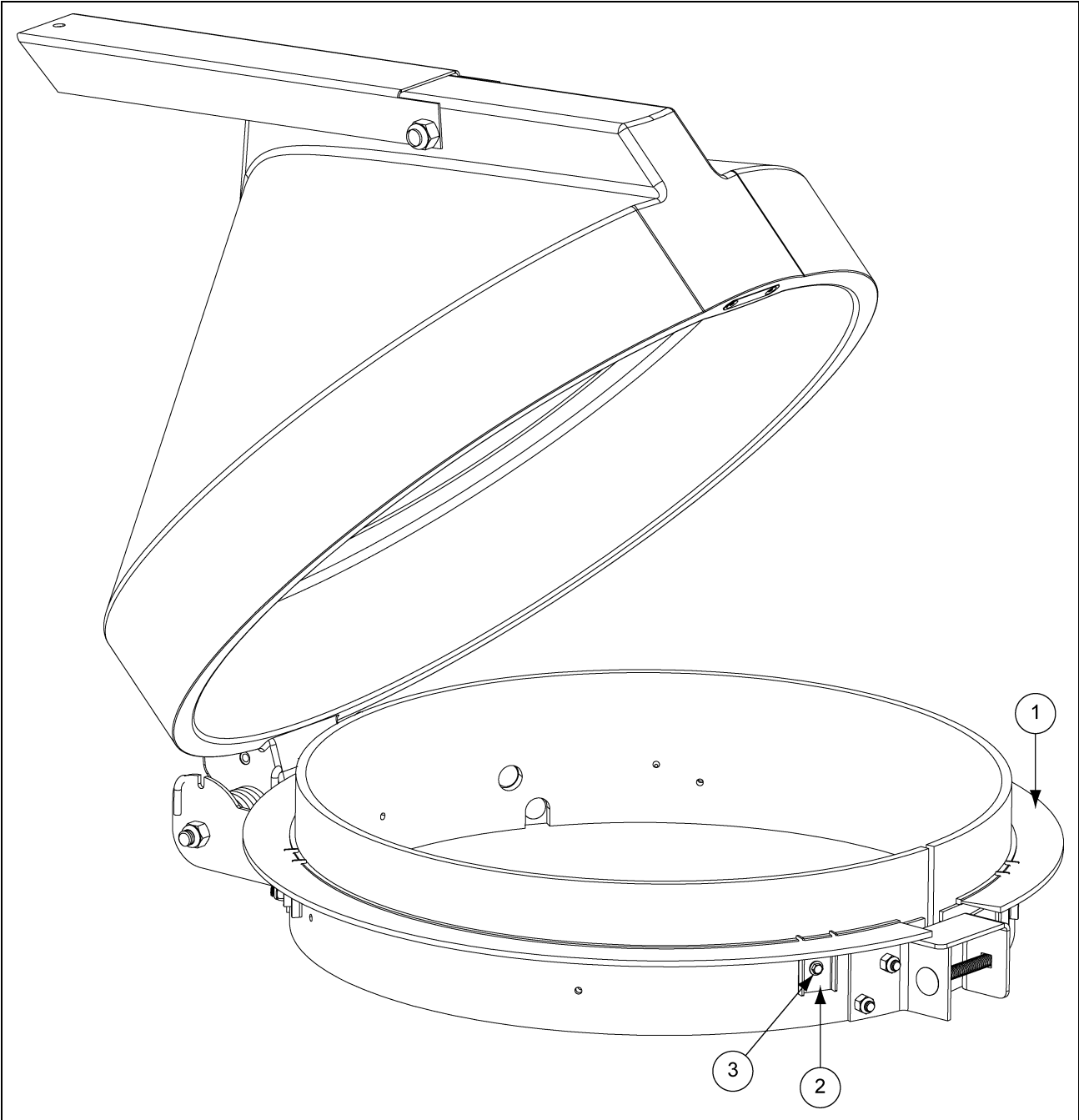


Figure 5

Ref #	Part #	Description	Qty
1	BLK-13450	BFT Lid Snow Guard Brush	1
	BLK-13584	BFT Large Lid Snow Guard Brush	1
2	BLK-13129	Clip, Hold Down, Snow Guard	4
3	S-280	Screw, SDS #10-16 x 5/8" HWH ZN	4