



Flashing Instructions

1. Leave top row of bolts out of the compression ring members when installing the hopper panels.
2. Field drill through the stiffeners and bolt through the sidewall sheet and stiffener with a 5/16" x 1-1/4" bin bolt. Install a neoprene washer on the inside of the tank and clamp it down as shown in [Figure 1 on Page 2](#).
3. Attach the flashing to the compression ring members using the bolts provided. (Do not tighten.)
4. Starting with a right hand flashing piece, bolt the sidewall sheet loosely to the flashing using 5/16" x 1-3/4" bolts with a neoprene washer on the outside only through the center two (2) holes. Working in a clockwise direction, start the nut on the pre-assembled flashing/stiffener bolt.
5. Loosely bolt the two (2) center holes on the left hand flashing piece with 5/16" x 1-3/4" bolts with a neoprene washer on the outside only. Using the same type bolt and washer, loosely bolt the left hand and right hand lap seam.
6. Continue in the same manner until the flashing is completely attached. Then tighten all the bolts securely.
7. To finish, go back and install the 1/4" self-drilling screws (S-7229). ([See Figure 2 on Page 2](#) for locations.)



Flashing Instructions (Continued)

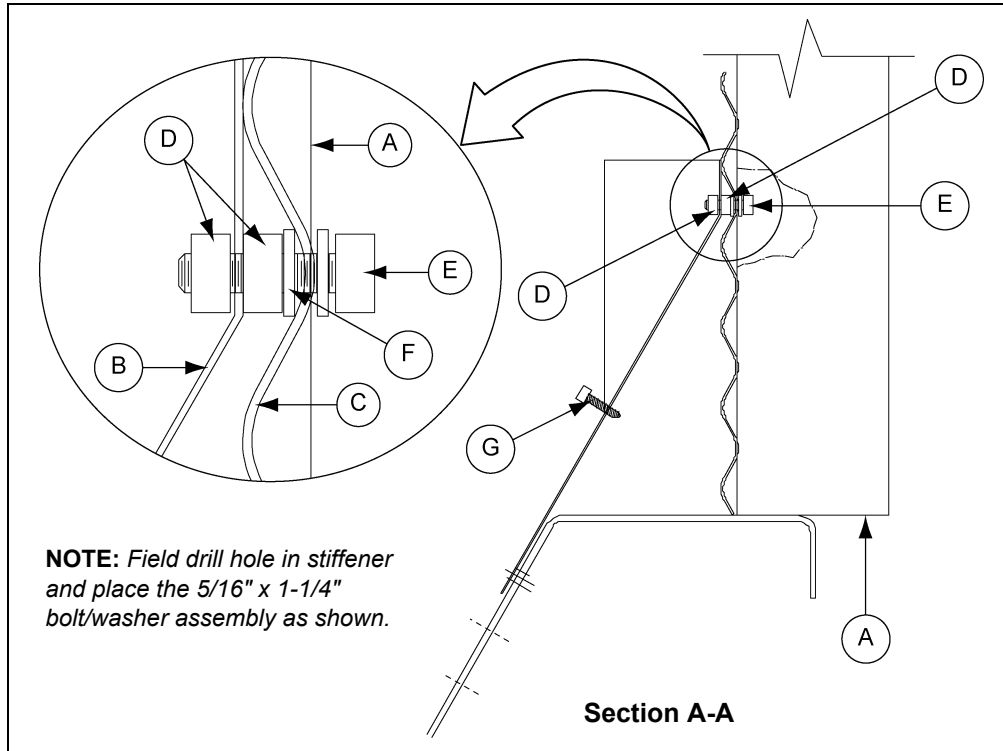


Figure 1

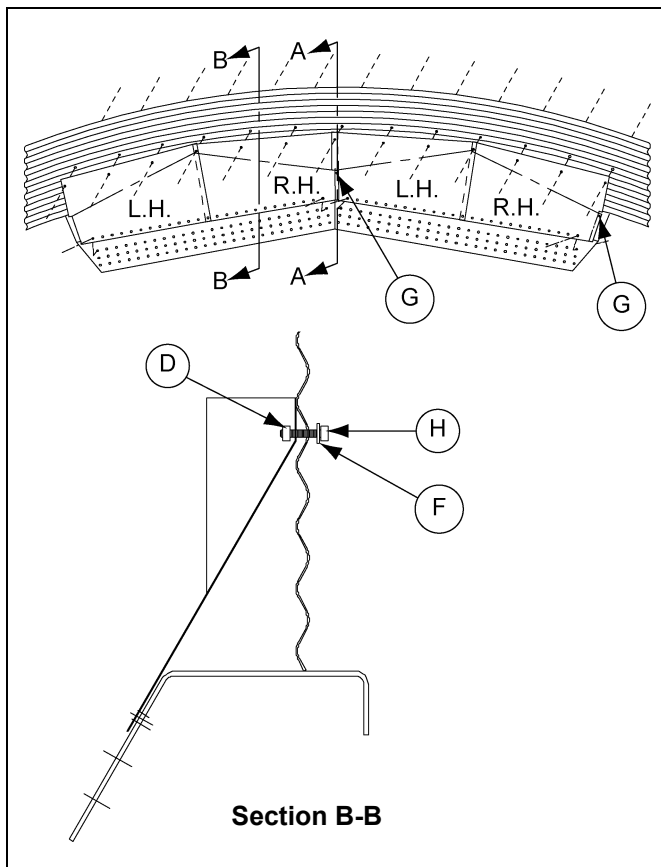


Figure 2

Ref #	Description
A	Stiffener
B	Flashing
C	Sidewall Sheet
D	5/16" Nuts
E	5/16" x 1-1/4" Bin Bolts
F	5/16" Neoprene Washer
G	1/4" Self-Drilling Screws (S-7229)
H	5/16" x 1-3/4" Bolts