

S2 Quick Start Guide Canister

Installation Manual

PNEG-1724

Version: 2.1

Date: **12-21-20**



PNEG-1724

Personnel operating or working around this equipment should read this manual. This manual must be delivered with equipment to its owner. Failure to read this manual and its safety instructions is a misuse of the equipment. Any misuse of the equipment may void the warranty.

Contents

| | |
|--|-----------|
| Chapter 1 Safety | 4 |
| Safety Guidelines | 4 |
| Cautionary Symbols Definitions | 5 |
| Safety Cautions | 6 |
| Safety Sign-Off Sheet | 9 |
| Chapter 2 General Information | 10 |
| Chapter 3 Installation | 11 |
| Chapter 4 Parts List | 15 |
| Components | 15 |
| Chapter 5 Warranty | 17 |

Safety Guidelines

Safety guidelines are general-to-specific safety rules that must be followed at all times. This manual is written to help you understand safe operating procedures and problems that can be encountered by the operator and other personnel when using this equipment. Save these safety guidelines for future reference.

As owner or operator, you are responsible for understanding the requirements, hazards, and precautions that exist and to inform others as required. Unqualified persons must stay out of the work area at all times.

Alterations must not be made to the equipment. Alterations can produce dangerous situations resulting in **SERIOUS INJURY** or **DEATH**.

This equipment must be installed in accordance with the current installation codes and applicable regulations, which must be carefully followed in all cases. Authorities having jurisdiction must be consulted before installations are made.

When necessary, you must consider the installation location relative to electrical, fuel and water utilities.

Personnel operating or working around equipment must read this manual. This manual must be delivered with equipment to its owner. Failure to read this manual and its safety instructions is a misuse of the equipment.

ST-0001-3

Cautionary Symbols Definitions

Cautionary symbols appear in this manual and on product decals. The symbols alert the user of potential safety hazards, prohibited activities and mandatory actions. To help you recognize this information, we use the symbols that are defined below.



This symbol indicates an imminently hazardous situation which, if not avoided, **will result in serious injury or death.**



This symbol indicates a potentially hazardous situation which, if not avoided, **can result in serious injury or death.**



This symbol indicates a potentially hazardous situation which, if not avoided, **can result in minor or moderate injury.**



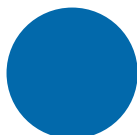
This symbol is used to address practices not related to personal injury.



This symbol indicates a general hazard.



This symbol indicates a prohibited activity.



This symbol indicates a mandatory action.

ST-0005-2

1. Safety

Safety Cautions

Use Personal Protective Equipment

- Use appropriate personal protective equipment:

Eye Protection



Respiratory Protection



Foot Protection



Hearing Protection



Head Protection



Fall Protection



Hand Protection



- Wear clothing appropriate to the job.
- Remove all jewelry.
- Tie long hair up and back.

ST-0004-1

Follow Safety Instructions

- Carefully read all safety messages in this manual and safety signs on your machine. Keep signs in good condition. Replace missing or damaged safety signs. Be sure new equipment components and repair parts include the current safety signs. Replacement safety signs are available from the manufacturer.
- Learn how to operate the machine and how to use controls properly. Do not let anyone operate without instruction.
- If you do not understand any part of this manual or need assistance, contact your dealer.



ST-0002-1

Lifting Hazard

- Single person lift can cause injury.
- Use a mechanical lifting device to lift or move the equipment during installation.



ST-0021-2

Maintain Equipment and Work Area

- Understand service procedures before doing work. Keep area clean and dry.
- Never service equipment while it is operating. Keep hands, feet, and clothing away from moving parts
- Keep your equipment in proper working condition. Replace worn or broken parts immediately.



ST-0003-1

Sharp Edge Hazard

- This product has sharp edges, which can cause serious injury.
- To avoid injury, handle sharp edges with caution and always use proper protective clothing and equipment



ST-0036-2

Rotating Auger Hazard

- Keep clear of rotating augers and moving parts.
- Do not remove or modify guards or covers.
- Lock-out power source before making adjustments, cleaning, or maintaining equipment.
- Failure to follow these precautions will result in serious injury or death.



ST-0037-1

Stay Clear of Moving Parts

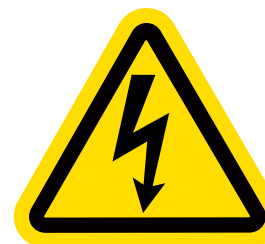
- Entanglement in rotating sprocket will cause serious injury or death.
- Keep all shields and covers in place at all times.
- Lock-out power source before making adjustments, cleaning, or maintaining equipment.



ST-0063-1

Operate Motor Properly

- All electrical connections must be made in accordance with the National Electric Code (US) or Canadian Electrical Code (CEC). Be sure equipment and bins are properly grounded.
- Lock-out power before resetting motor overloads.
- Do not repetitively stop and start the drive in order to free a plugged condition. Jogging the drive in this manner can damage the equipment and drive components.



ST-0009-2

1. Safety

Do Not Enter Bin

- Rotating flighting will kill or dismember.
- Flowing material will trap and suffocate.
- Crusted material will collapse and suffocate.
 - If you must enter the bin:
 1. Shut off and lock out all power sources.
 2. Use a safety harness and safety line.
 3. Station another person outside the bin.
 4. Avoid the center of the bin.
 5. Wear proper breathing equipment or respirator.



ST-0061-1

Use Unload Equipment Properly

- Do not operate this equipment alone. Make sure someone nearby is aware of the proper shut down sequence in the event of an emergency.
- Do not allow any person intoxicated or under the influence of drugs to operate this equipment. All operators must be adequately rested and prepared to perform all functions of operating the equipment.
- Do not start equipment until all persons are clear of the work area and safety guards are in place.
- Do not allow anyone inside a bin, truck, or wagon which is being unloaded by an auger. Flowing grain can trap and suffocate in seconds.
- Use ample overhead lighting after sunset to light the work area.
- Always use caution to not hit the auger when positioning the load.
- Do not leave equipment operating while unattended.
- Be aware of pinch points, which can trap or catch objects and cause injury.
- Be sure all equipment is locked in position before operating.
- Always lock out all power sources to the equipment when unloading is finished.



ST-0051-1

2. General Information



NEVER enter a grain bin unless ALL power driven equipment has been shut down. Disconnect and lock out power before entering the bin or servicing the equipment.



ALWAYS keep ALL guards and shields in place, until all the power is disconnected and locked out.

1. Remove all contents from the manual canister. Keep the lid off of the canister to ease installation.
2. The bin must be empty to install the canister brackets. **The safest installation environment requires that the bin be completely empty.**
3. Find a suitable position to mount the canister. GSI recommends that the canister be installed close to the Series II Sweep Operational Control Panel and the bin entry door. The height chosen should allow the canister to be easily recognized and utilized.
4. Make sure to choose a position that will not allow the canister to be hidden or blocked during normal operations. **DO NOT USE** the stiffener attachment holes to attach the canister. The stiffener attachment holes are to be utilized for load bearing transference. **Failure to follow this direction can result in damage to the bin structural integrity and create an unsafe environment around the bin site.**
5. At the peak of a rib in the sidewall sheet, drill a hole that will accept one of the 5/16"-18 x 1-1/4" bin bolts with washer.
6. Eight inches (8") vertically down from the previously drilled hole, drill two (2) holes that will accept one of the 5/16"-18 x 1-1/4" bin bolts with washer at the peak of a rib in the sidewall sheet. The holes should be spaced away from that top hole (A) one inch (1") to each side. *See Figure 3A* for visual explanation.

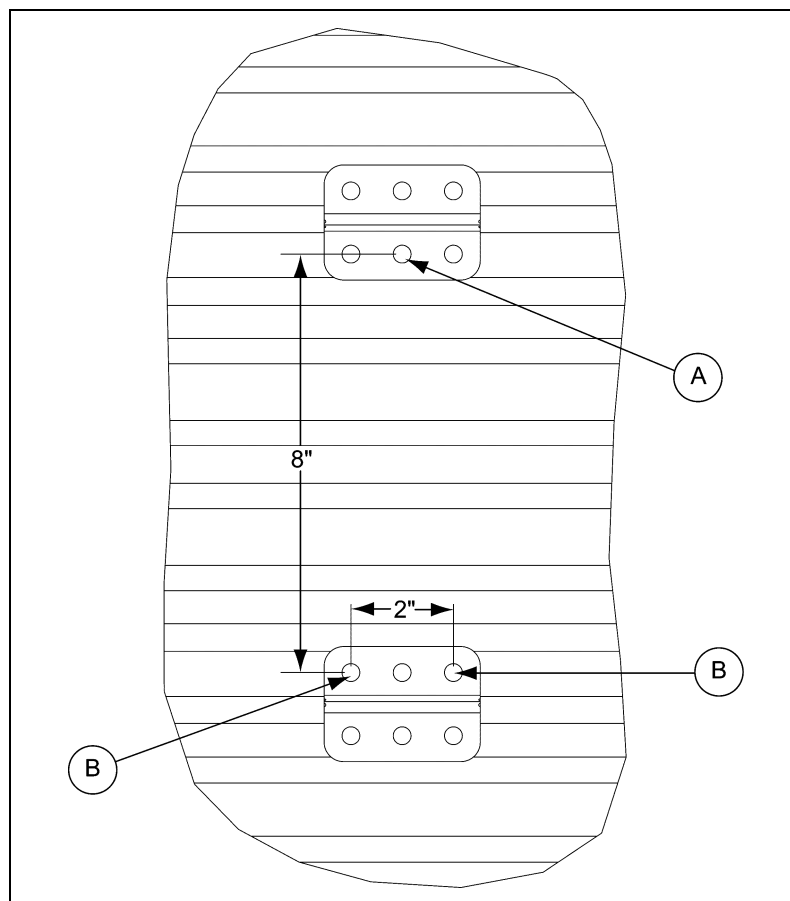


Figure 3A

| Ref # | Description |
|-------|-----------------|
| A | Top Single Hole |
| B | Bottom Hole |

3. Installation

7. Insert three (3) 5/16"-18 x 1-1/4" bolts (C) through the sidewall, washer to the inside of the sidewall sheet, through the two (2) brackets and fasten together with three (3) 5/16"-18 nylock nuts (D). (See Figure 3B.)

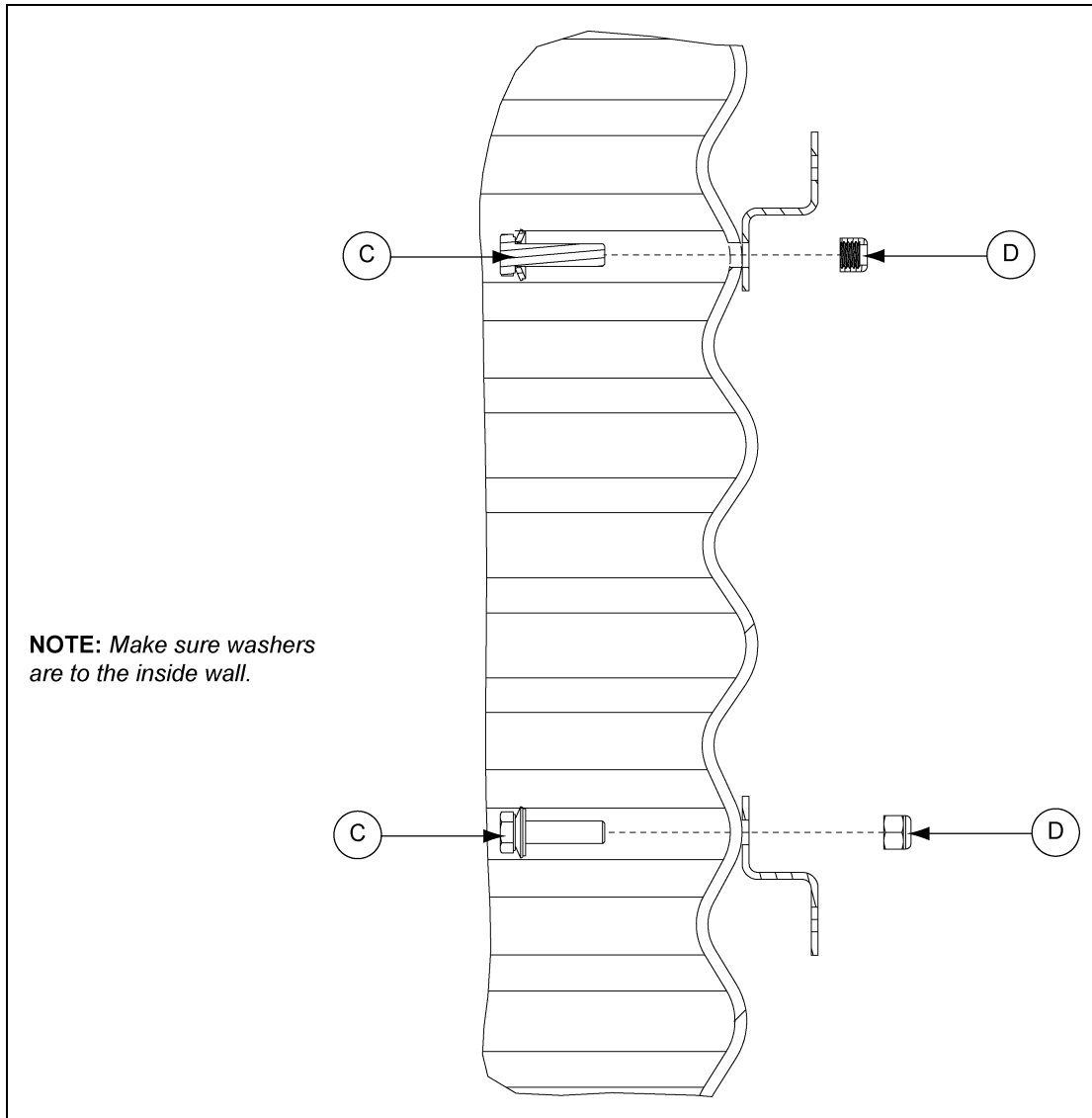


Figure 3B

| Ref # | Description |
|-------|--|
| C | 5/16"-18 x 1-1/4" Bin Bolts with Washers |
| D | 5/16"-18 Nylock Nuts |

8. Attach the canister to the canister bracket with three (3) 5/16"-18 x 1-1/4" bolts (C) and nylock nuts (D). (See Figure 3C.)

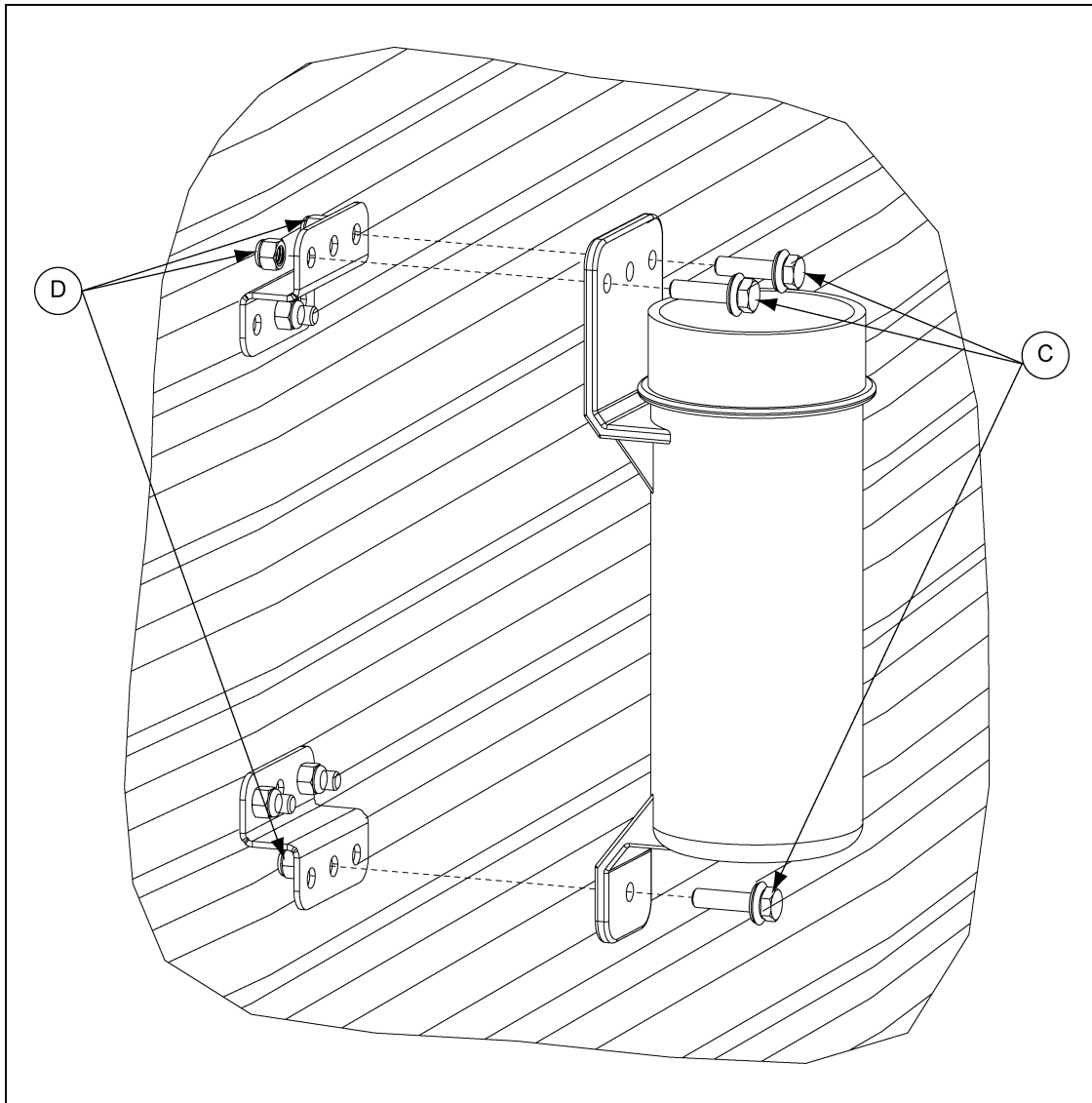


Figure 3C

| Ref # | Description |
|-------|--|
| C | 5/16"-18 x 1-1/4" Bin Bolts with Washers |
| D | 5/16"-18 Nylock Nuts |

3. Installation

9. Place one of the quick start guides (G) (PNEG-1723) in the canister and replace the cap (E). Make sure that the rubber gasket (F) is inserted between the canister body and the canister cap (E). The other guide should be placed in the work area for reference. (See Figure 3D.)

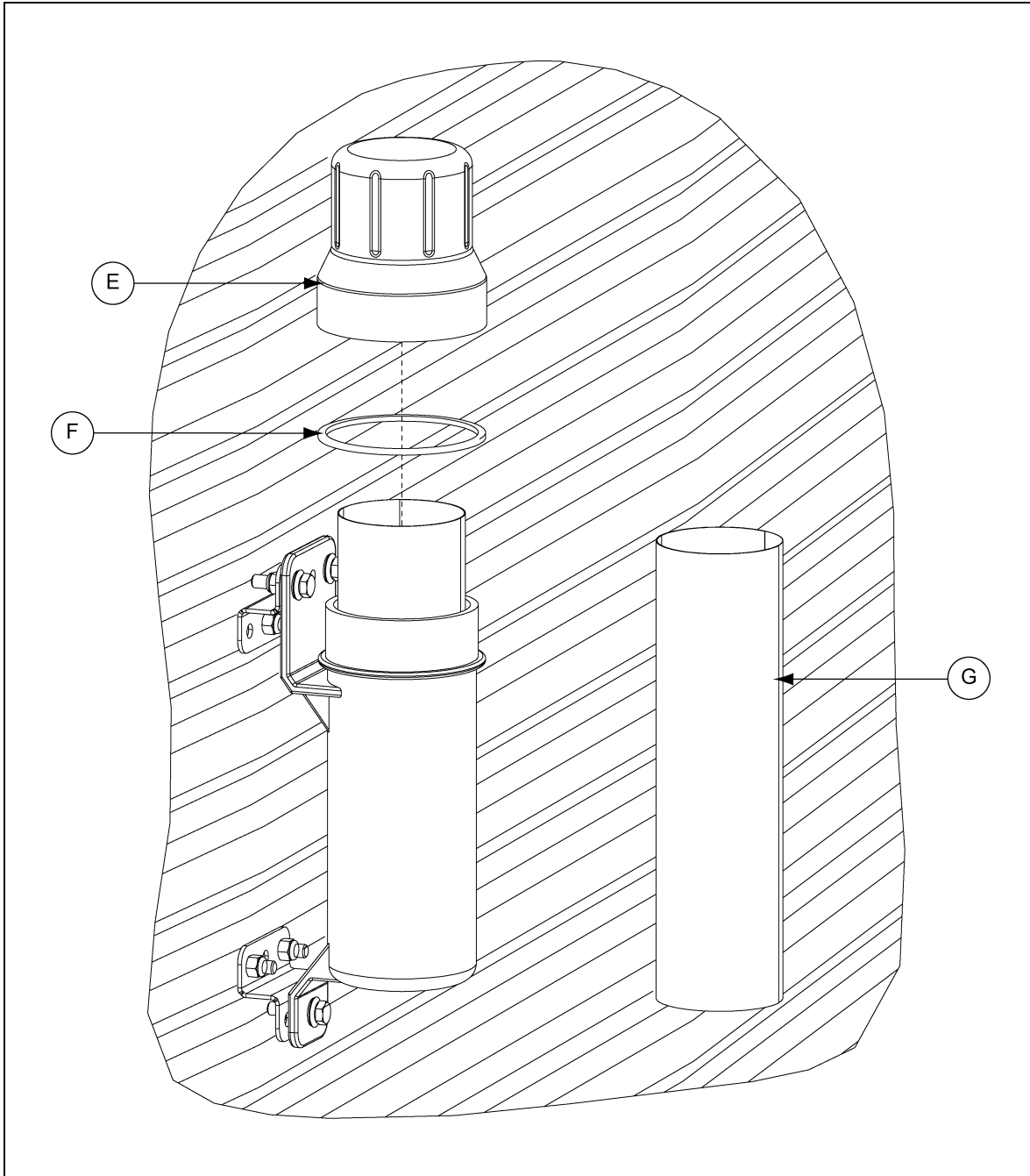
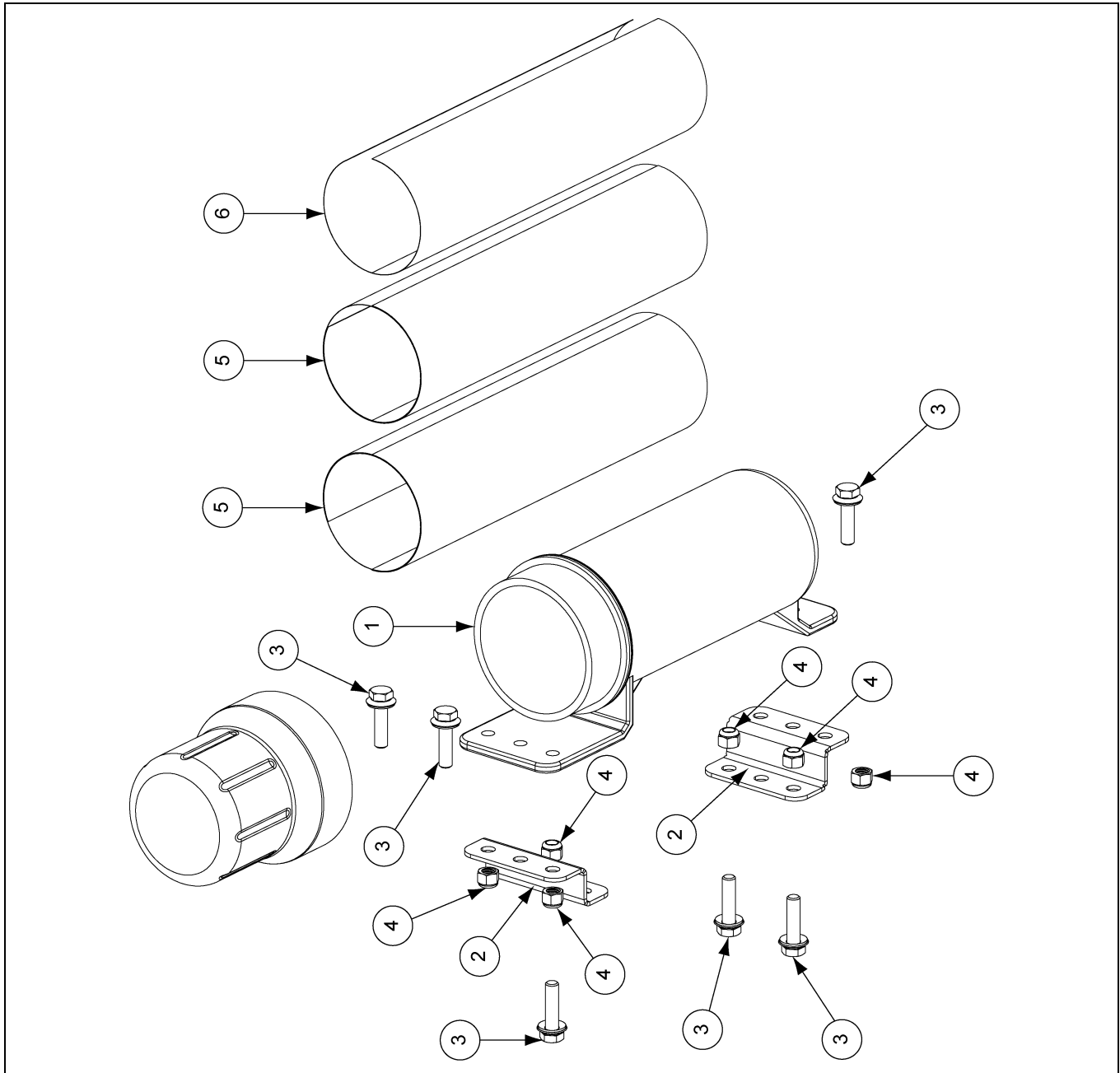


Figure 3D

| Ref # | Description |
|-------|--------------------------------|
| E | Canister Cap |
| F | Canister Gasket |
| G | Quick Start Guide for the Shop |

Components



Components Parts List

| Ref # | Part # | Description | Qty |
|-------|------------|---|-----|
| 1 | GK80046 | Manual Canister Assembly | 1 |
| 2 | GK80045-BS | Canister Bracket - Bin Silver | 1 |
| 3 | S-277 | 5/16"-18 x 1-1/4" HH Bin Bolt w/ Washer YDP Grade 5 | 6 |
| 4 | S-7382 | 5/16"-18 Nylock Nut Zinc Grade 5 | 6 |
| 5 | PNEG-1723 | Series II Sweep Quick Start Guide Pre-June 2010 | 0 |
| 5 | PNEG-1759 | Series II Sweep Quick Start Guide Post-May 2010 | 2 |
| 6 | PNEG-1724 | Quick Start Guide Installation Manual | 1 |

NOTES

Limited Warranty — N.A. Grain Products

The GSI Group, LLC. ("GSI") warrants products which it manufactures, to be free of defects in materials and workmanship under normal usage and conditions for a period of 12 months from the date of shipment (or, if shipped by vessel, 14 months from the date of arrival at the port of discharge). If, in GSI's sole judgment, a product is found to have a defect in materials and/or workmanship, GSI will, at its own option and expense, repair or replace the product or refund the purchase price. This Limited Warranty is subject to extension and other terms as set forth below.

Warranty Enhancements: The warranty period for the following products is enhanced as shown below and is in lieu of (and not in addition to) the above stated warranty period. (Warranty Period is from date of shipment.)

| | Product | Warranty Period |
|--------------------------|---|-----------------|
| Storage | Grain Bin Structural Design • Sidewall, roof, doors, platforms and walkarounds • Flooring (when installed using GSI specified floor support system for that floor) • Hopper tanks (BFT, GHT, NCHT, and FCHT) | 5 Years |
| Conditioning | Dryer Structural Design – (Tower, Portable and TopDry) • Includes (frame, portable dryer screens, ladders, access doors and platforms) | 5 Years |
| | All other Dryer parts including: • Electrical (controls, sensors, switches and internal wiring) | 2 Years |
| | All Non-PTO Driven Centrifugal and Axial Fans | 3 Years |
| | Bullseye Controllers | 2 Years |
| Material Handling | Bucket Elevators Structural Design | 5 Years |
| | Towers Structural Design | 5 Years |
| | Catwalks Structural Design | 5 Years |
| | Accessories (stairs, ladders and platforms) Structural Design | 5 Years |

Conditions and Limitations:

THERE ARE NO WARRANTIES THAT EXTEND BEYOND THE LIMITED WARRANTY DESCRIPTION SET FORTH HEREIN; SPECIFICALLY, GSI DISCLAIMS ANY AND ALL OTHER WARRANTIES OF ANY KIND, EXPRESS OR IMPLIED, INCLUDING, WITHOUT LIMITATION, WARRANTIES OF MERCHANTABILITY OR FITNESS FOR A PARTICULAR PURPOSE OR USE IN CONNECTION WITH: (I) ANY PRODUCT MANUFACTURED OR SOLD BY GSI, OR (II) ANY ADVICE, INSTRUCTION, RECOMMENDATION OR SUGGESTION PROVIDED BY AN AGENT, REPRESENTATIVE OR EMPLOYEE OF GSI REGARDING OR RELATED TO THE CONFIGURATION, INSTALLATION, LAYOUT, SUITABILITY FOR A PARTICULAR PURPOSE, OR DESIGN OF SUCH PRODUCTS.

The sole and exclusive remedy for any claimant is set forth in this Limited Warranty and shall not exceed the amount paid for the product purchased. This Warranty only covers the value of the warranted parts and equipment, and does not cover labor charges for removing or installing defective parts, shipping charges with respect to such parts, any applicable sales or other taxes, or any other charges or expenses not specified in this Warranty. GSI shall not be liable for any other direct, indirect, incidental or consequential damages, including, without limitation, loss of anticipated profits or benefits. Expenses incurred by or on behalf of a claimant without prior written authorization from the GSI warranty department shall not be reimbursed. This warranty is not transferable and applies only to the original end-user. GSI shall have no obligation or responsibility for any representations or warranties made by or on behalf of any dealer, agent or distributor. Prior to installation, the end-user bears all responsibility to comply with federal, state and local codes which apply to the location and installation of the products.

This Limited Warranty extends solely to products sold by GSI and does not cover any parts, components or materials used in conjunction with the product, that are not sold by GSI. GSI assumes no responsibility for claims resulting from construction defects, unauthorized modifications, corrosion or other cosmetic issues caused by storage, application or environmental conditions. Modifications to products not specifically delineated in the manual accompanying the product at initial sale will void all warranties. This Limited Warranty shall not extend to products or parts which have been damaged by negligent use, misuse, alteration, accident or which have been improperly/inadequately maintained.

Notice Procedure:

In order to make a valid warranty claim a written notice of the claim must be submitted, using the RMA form, within 60 days of discovery of a warrantable nonconformance. The RMA form is found on the OneGSI portal.

Service Parts:

GSI warrants, subject to all other conditions described in this Warranty, Service Parts which it manufactures for a period of 12 months from the date of purchase unless specified in Enhancements above.

This equipment shall be installed in accordance with the current installation codes and applicable regulations, which should be carefully followed in all cases. Authorities having jurisdiction should be consulted before installations are made.



**1004 E. Illinois St.
Assumption, IL 62510-0020
Phone: 1-217-226-4421
Fax: 1-217-226-4420
www.gsiag.com**



GSI is a worldwide brand of AGCO Corporation.