



Adjusting the Center Pivot Bracket Bolt

Backshield counterweight kit assembly is applicable for 21' and larger sweeps.

1. Locate the center pivot bracket assembly (17) at the center well. Loosen the 3/4" pivot bolt (18) and nut (20) until only one thread is showing on bolt after the nut.

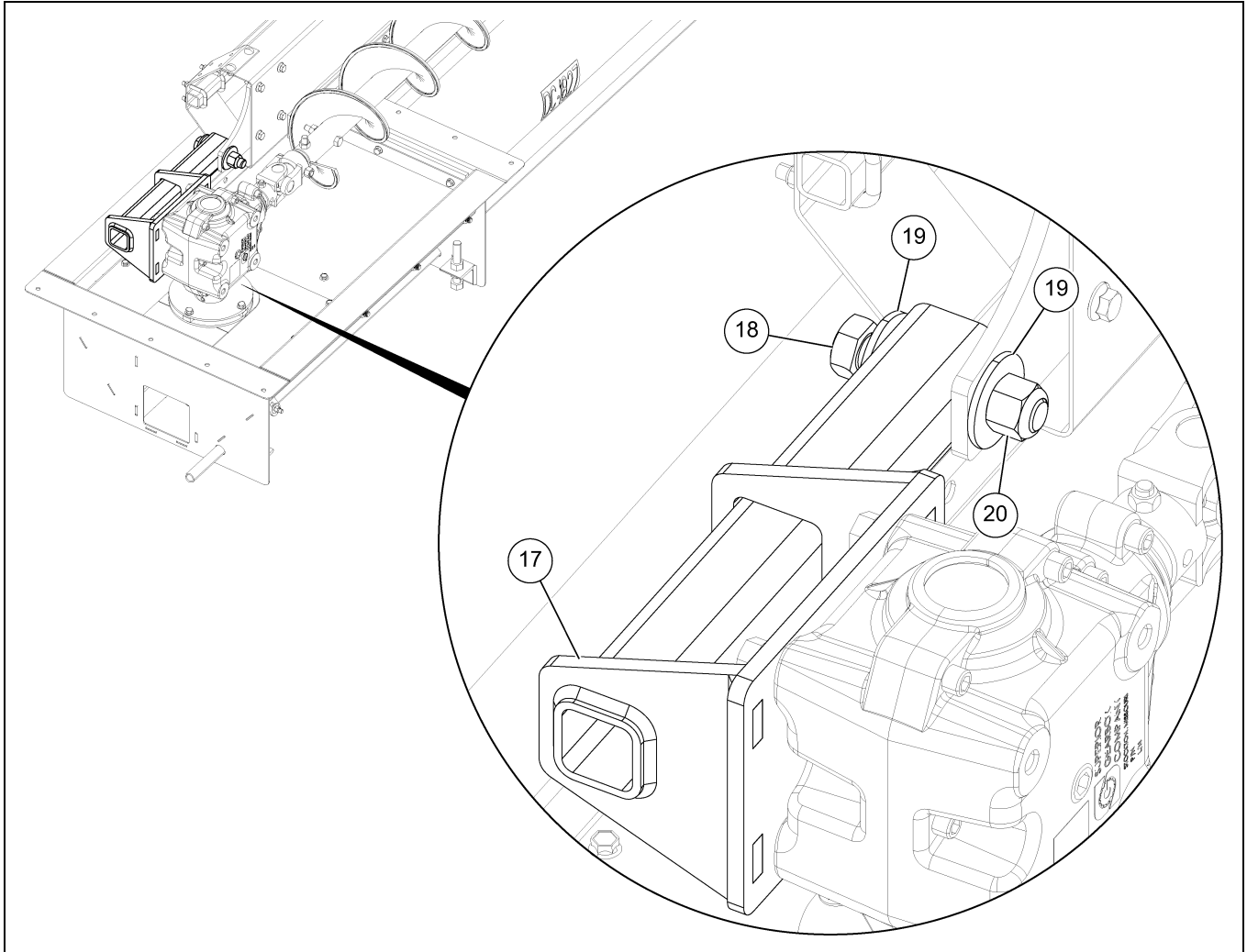


Figure 1 *Adjusting the Center Pivot Bracket Bolt*

Ref #	Description
17	Center Pivot Bracket Assembly
18	3/4" x 4" HHCS Bolt
19	3/4" Flat Washer
20	3/4" Nylock Nut



Installing the Backshield Counterweight Retrofit Only

1. Position the hole on the torque tube bracket (5) at 16" from the end of the backshield (14) and mark four holes (15) on the backshield (14) using the holes of the torque tube bracket (5) as a template. Field drill four 3/8" holes (15) at the marked locations.

NOTE: The torque tube bracket (5) hole closest to the backshield (14) end should be used for measuring.

2. Install the torque tube bracket (5) to the backshield (14) using 3/8" x 3/4" carriage bolts (11) and 3/8" flange nuts (7).
3. Also, secure the torque tube bracket (5) to the torque tube (16) using two 5/16" x 1-1/4" U-bolts (9) and 5/16" nylock nuts (10).

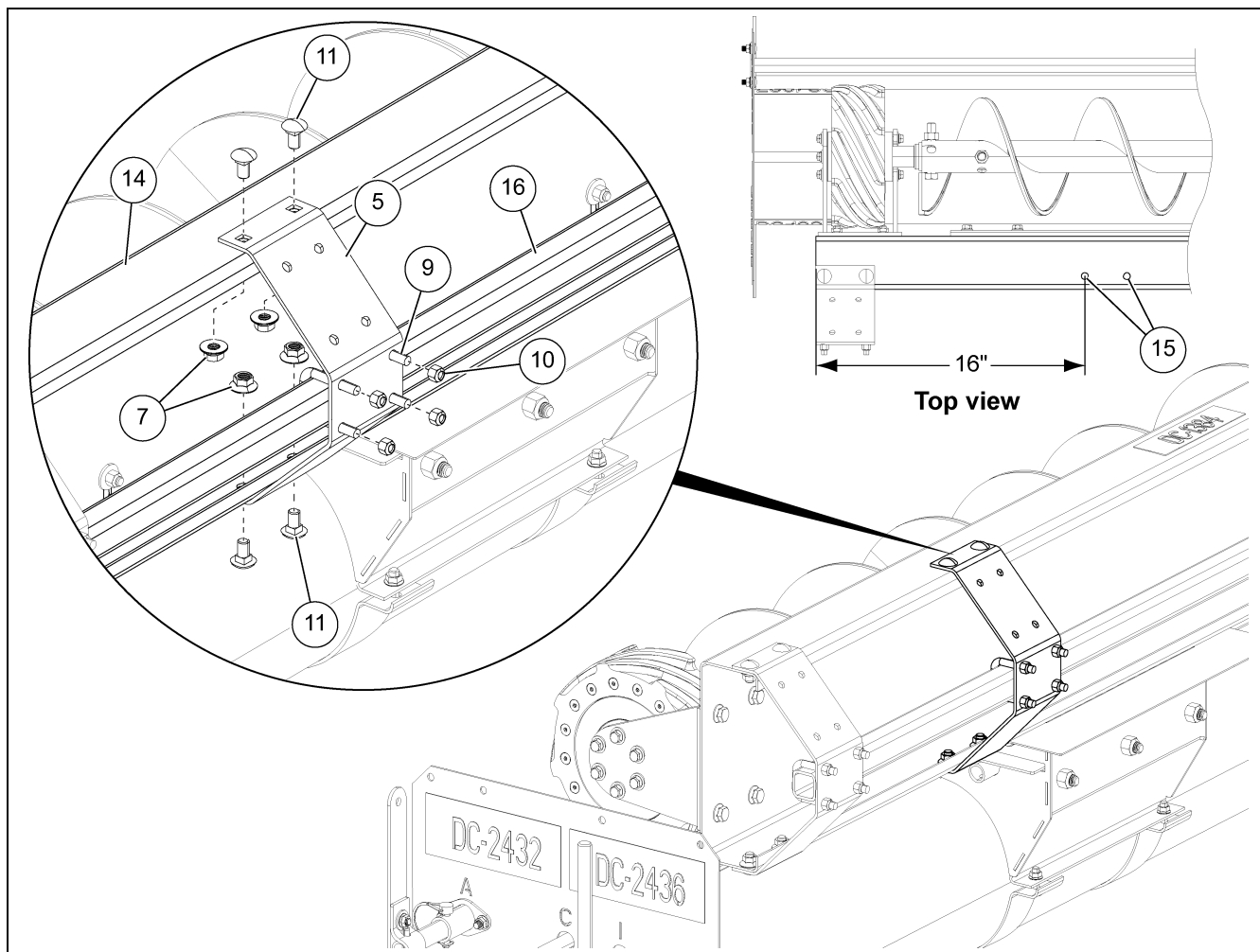


Figure 2 Installing the Torque Tube Bracket to the Backshield for Retrofit

Ref #	Part #	Description
5	GK80377	Torque Tube Bracket
7	S-968	3/8"-16 Flange Nut
9	S-10521	5/16"-18 x 1-1/4" U-Bolt
10	S-7382	5/16"-18 Nylock Nut

Ref #	Description
11	3/8"-16 x 3/4" Carriage Bolt (S-7391)
14	Backshield
15	3/8" Field Drilled Holes
16	Torque Tube

Installing the Backshield Counterweight Retrofit Only (Continued)

4. Measure 2-1/4" from the end of the torque tube bracket (5) and mark the location. Align the end of the counterweight support weldment (2) with the mark and field drill two holes on the backshield (14) using the holes in the counterweight support weldment (2) as a template.
5. Install the counterweight support weldment (2) to the field drilled holes in the the backshield (14) using 3/8" x 1" HHCS bolts (6) and 3/8" flange nuts (7).
6. Install the counterweight tube weldment (1) to the torque tube bracket (5) using mounting plate (3), 5/16" x 2" HHCS bolts (12) and 5/16" flange nuts (13).
7. Slide the counterweights (4) over the counterweight tube weldment (1) and secure the weights from slipping by adding lock pins (8) on both sides.

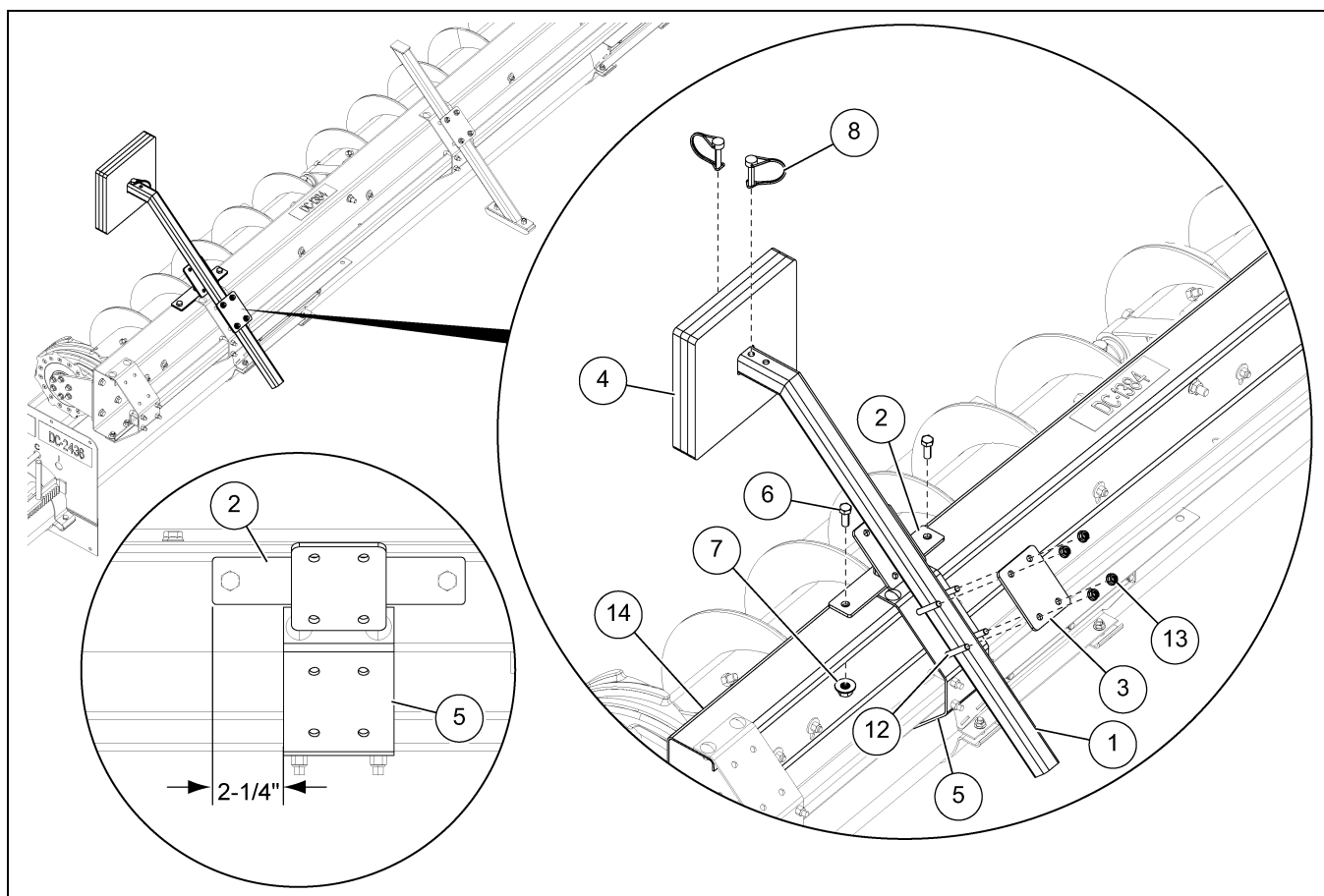


Figure 3 *Installing the Backshield Counterweight Retrofit*

Ref #	Part #	Description
1	GC21098-Y	Backshield Counterweight Tube Weldment
2	GC21091-Y	Backshield Counterweight Support Weldment
3	GC21093-Y	Mounting Plate
4	GC21090-Y	Counterweight
5	GK80377	Torque Tube Bracket
6	S-7469	3/8"-16 x 1" HHCS Bolt

Ref #	Part #	Description
7	S-968	3/8"-16 Flange Nut
8	S-10547	5/16" x 3/8" Safety Snap Pin
12	S-7877	5/16"-18 x 2" HHCS Bolt
13	S-3611	5/16"-18 Flange Nut
14		Backshield

Installing the Backshield Counterweight Kit Assembly

Backshield counterweight kit assembly is applicable for 21' and larger sweeps.

1. Identify the correct torque tube bracket (5) to install the counterweight support weldment (2).
2. Align the counterweight support weldment (2) at the torque tube bracket (5) location and install it to the backshield (14) using 3/8" x 1" HHCS bolts (6) and 3/8" flange nuts (7).
3. Install the counterweight tube weldment (1) to the torque tube bracket (5) using mounting plate (3), 5/16" x 2" HHCS bolts (12) and 5/16" flange nuts (13).
4. Slide the counterweights (4) over the counterweight tube weldment (1) and secure the weights from slipping by adding lock pins (8) on both sides.

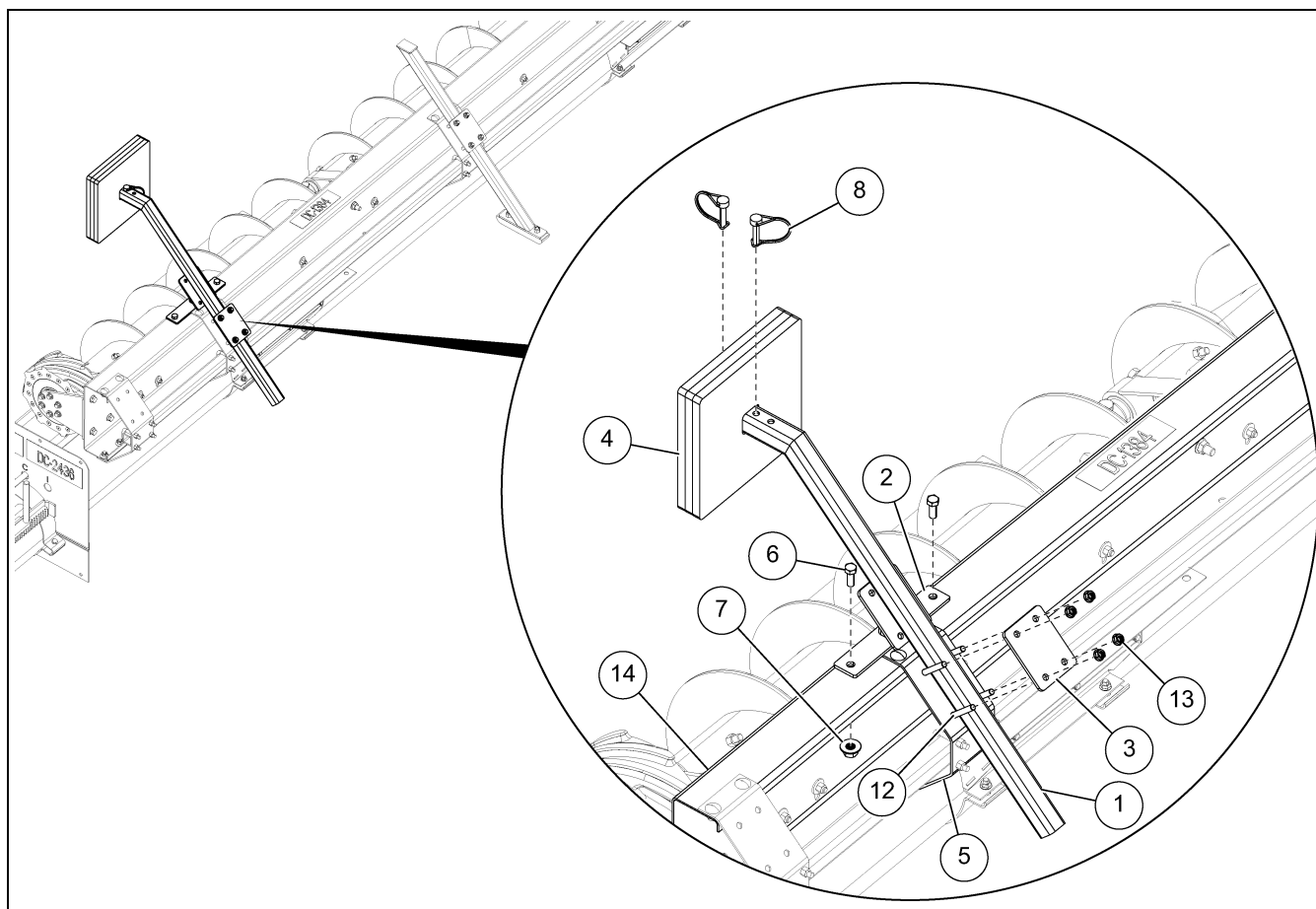


Figure 4 *Installing the Backshield Counterweight Kit Assembly*

Ref #	Part #	Description
1	GC21098-Y	Backshield Counterweight Tube Weldment
2	GC21091-Y	Backshield Counterweight Support Weldment
3	GC21093-Y	Mounting Plate
4	GC21090-Y	Counterweight
5	GK80377	Torque Tube Bracket
6	S-7469	3/8"-16 x 1" HHCS Bolt

Ref #	Part #	Description
7	S-968	3/8"-16 Flange Nut
8	S-10547	5/16" x 3/8" Safety Snap Pin
12	S-7877	5/16"-18 x 2" HHCS Bolt
13	S-3611	5/16"-18 Flange Nut
14		Backshield

Installing the Backshield Counterweight Kit Assembly (Continued)

5. The backshield counterweight assembly (21) can be adjusted in the direction (as shown) for proper sweep clearance.

NOTE: When sliding the support down closer to the floor, it will raise the sweep off the floor and put down pressure onto the reduction wheel.

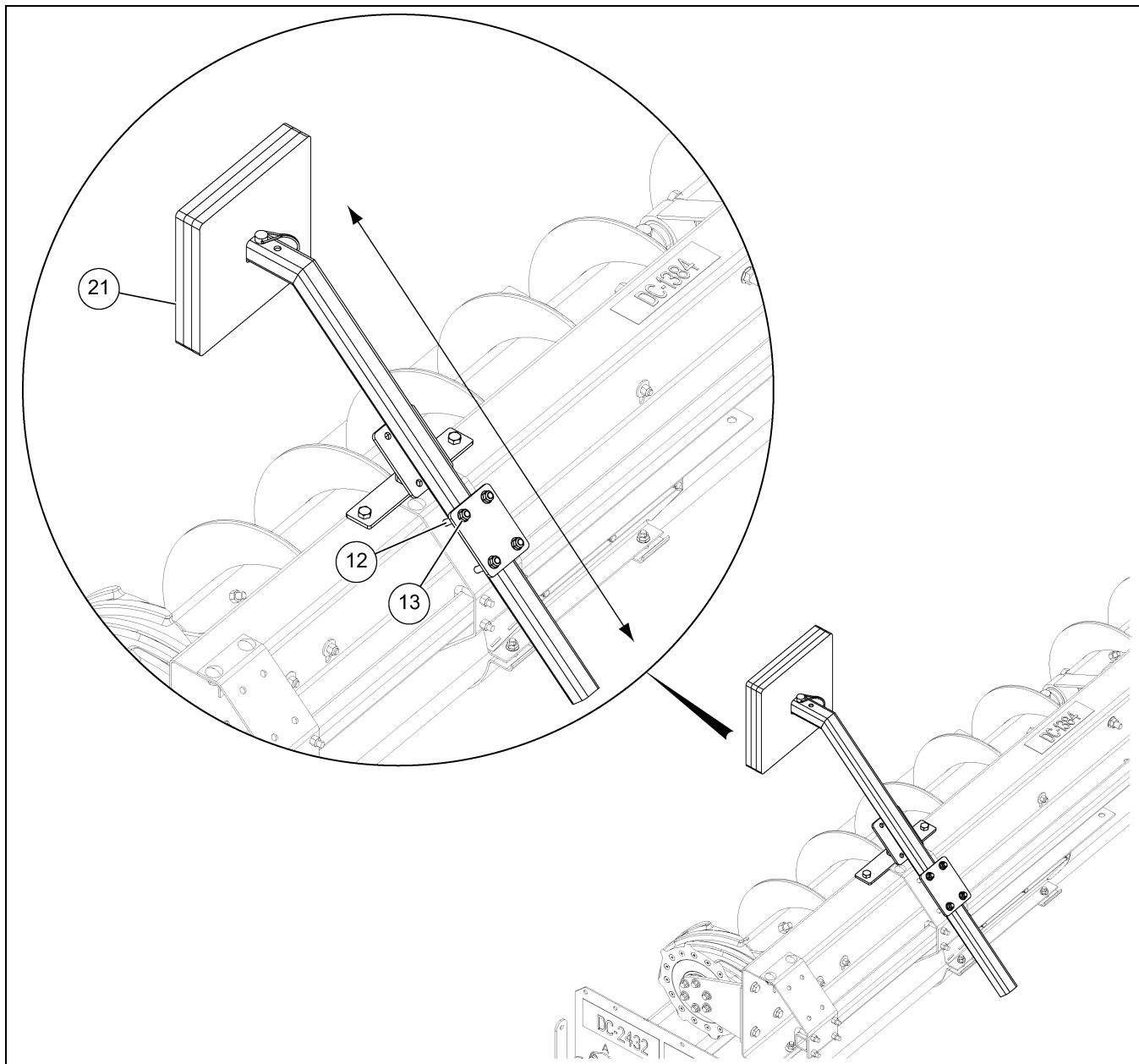


Figure 5 Adjusting the Backshield Counterweight Kit Assembly

Ref #	Part #	Description
12	S-7877	5/16"-18 x 2" HHCS Bolt
13	S-3611	5/16"-18 Flange Nut
21		Backshield Counterweight Assembly

Backshield Counterweight Kit Parts (GK81281)

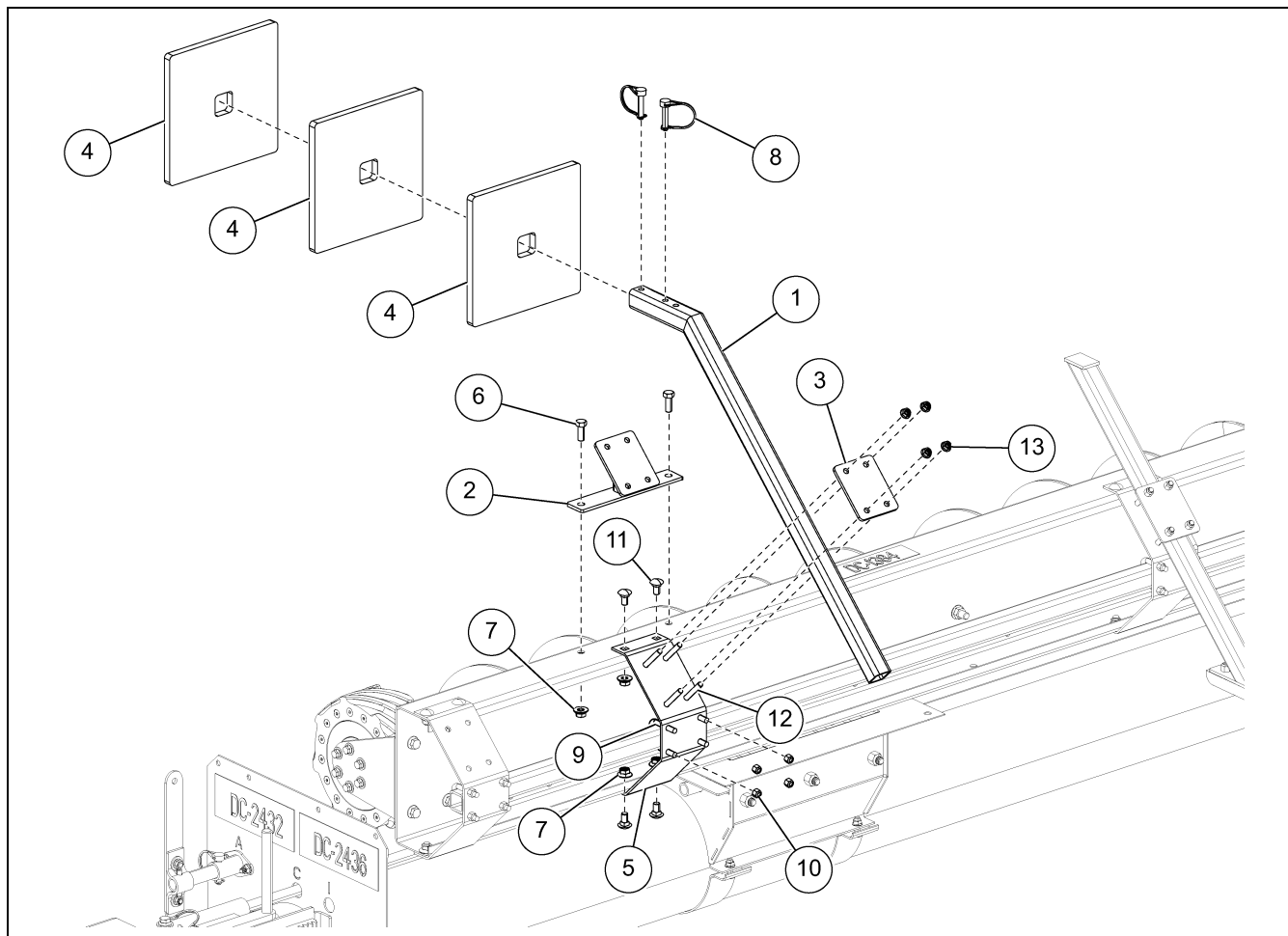


Figure 6 Backshield Counterweight Kit Parts

Backshield Counterweight Kit Parts List (GK81281)

Ref #	Part #	Description	Qty
1	GC21098-Y	DGD Sweep Backshield Counterweight Tube Weldment	1
2	GC21091-Y	DGD Sweep Backshield Counterweight Support Weldment	1
3	GC21093-Y	DGD Sweep Backshield Counterweight Support - Lower Plate	1
4	GC21090-Y	DGD Sweep Backshield Counterweight	3
5	GK80377	DGD Sweep Torque Tube Bracket	1
6	S-7469	Bolt, HHCS 3/8"-16 x 1" ZN Grade 5	2
7	S-968	Nut, Flange 3/8"-16 ZN Grade 5 Wide Flange	6
8	S-10547	Pin, Safety Snap 5/16" x 1-3/8" ZN	2
9	S-10521	Bolt, U-Bolt 5/16"-18 x 1-1/4" IW x 2" IL x 3/4" TL ZN	2
10	S-7382	Nut, Nylock 5/16"-18 ZN Grade 5	4
11	S-7391	Bolt, Carriage 3/8"-16 x 3/4" ZN Grade 5	4
12	S-7877	Bolt, HHCS 5/16"-18 x 2" ZN Grade 5	4
13	S-3611	Nut, Flange 5/16"-18 YDP Grade 2	4