

BIN UNLOADING

SWEEPS AND UNLOADS



GENTLE AND EFFICIENT

**DIRECT GEAR DRIVE / CHAIN LOOP POWER SWEEP
CARRY-IN / U-TROUGH / LEAVE-IN / X-SERIES
PADDLE SWEEP / UNDER-BIN CHAIN CONVEYOR**



Take control.

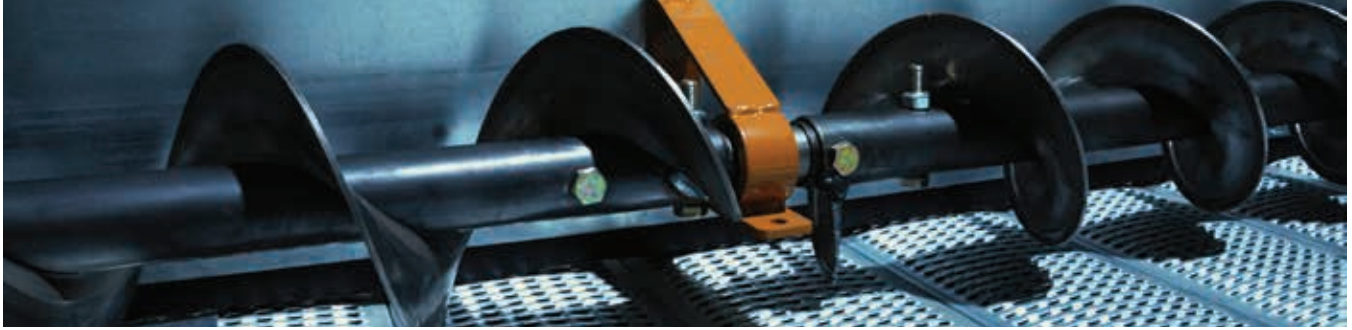


BIN UNLOADING OVERVIEW

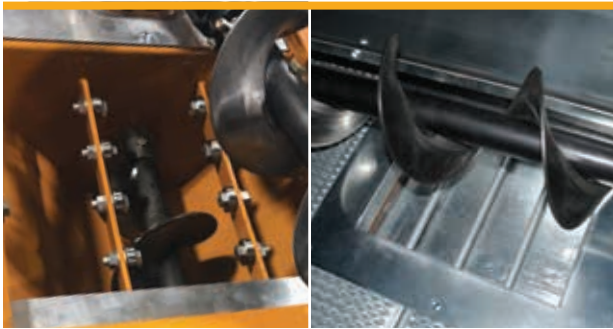
Whether you are emptying a single bin or on the fifth turn of that bin this year, you need to move your grain gently and efficiently. GSI's unloads are hard at work on farms, grain elevators, and processing plants across the world.

	MODEL / AUGER SIZE	APPROXIMATE CAPACITY	BIN DIAMETER
DIRECT GEAR DRIVE SWEEP	8"	1,500 - 2,500 BPH	15' - 48'
	10"	2,000 - 5,000 BPH	24' - 72'
CHAIN LOOP POWERSWEEP	8"	up to 4,500 BPH	24' - 72'
	10"	up to 4,500 BPH	24' - 72'
	12"	up to 4,500 BPH	24' - 72'
STANDARD CARRY-IN SWEEP	6"-8"	up to 2,250 BPH	15' - 42'
	10"	2,250 BPH	24' - 48'
COMMERCIAL CARRY-IN SWEEP	6"-8"	800 - 1,050 BPH	24' - 48'
	8"-10"	1,500 - 2,050 BPH	24' - 48'
	10"-12"	3,200 - 3,700 BPH	24' - 72'
U-TROUGH	7.25"	5,000 - 7,500 BPH	15' - 78'
	8.25"	5,000 - 7,500 BPH	30' - 78'
LEAVE-IN	10"	1,500 - 3,000 BPH	30' - 105'
	12"	4,000 - 6,500 BPH	30' - 105'
X-SERIES SWEEP	12"	3,000 - 7,000 BPH	30' - 156'
	16"	8,000 - 10,000 BPH	30' - 156'
PADDLE SWEEPS	Direct Gear Drive	up to 5,000 BPH	15' - 66'
	Farm Duty Interceptor	1,000 - 5,500 BPH	15' - 60'
	Commercial Duty DPS G2	1,000 - 6,000 BPH	15' - 105'
	High-Capacity DPS 12K	7,500 - 12,000 BPH	48' - 139'
UNDER-BIN CHAIN CONVEYOR	12" x 12" Conveyor	up to 10,000 BPH	24'-90'
	16" x 12" Conveyor	up to 10,000 BPH	24'-90'
	21" x 12" Conveyor	up to 10,000 BPH	24'-90'

DIRECT GEAR DRIVE SWEEPS



Direct Gear Drive power sweeps feature new center and intermediate well designs, heavy-duty gearboxes, single piece backshield assembly and redesigned end-wheel. With fewer moving parts, GSI Direct Gear Drive power sweeps are now more durable, reliable and easier to maintain than ever. Direct gear drive power sweeps are available in 8" (up to 48' dia. bins) and 10" (24' to 72') models, and are permanently installed and ready to start up with the flip of a switch.



CENTER AND INTERMEDIATE WELLS

Unload tube bolts directly onto the center well for easy install. Intermediate wells use rods instead of wire mesh for better flow. Auxiliary well control rod is standard. Steel roller bearings allow smooth gate operation.



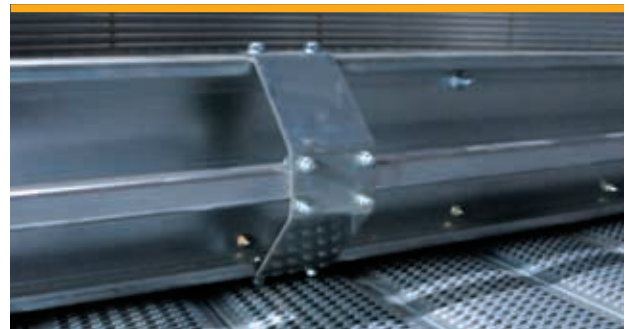
RACK-AND-PINION CONTROLS

Simplified sweep engagement with a band on control handle, with pin for locking position. Separate control pipes for center and intermediate wells and crank handle make opening and closing gates easy.



HEAVY-DUTY COMMERCIAL GRADE GEARBOX

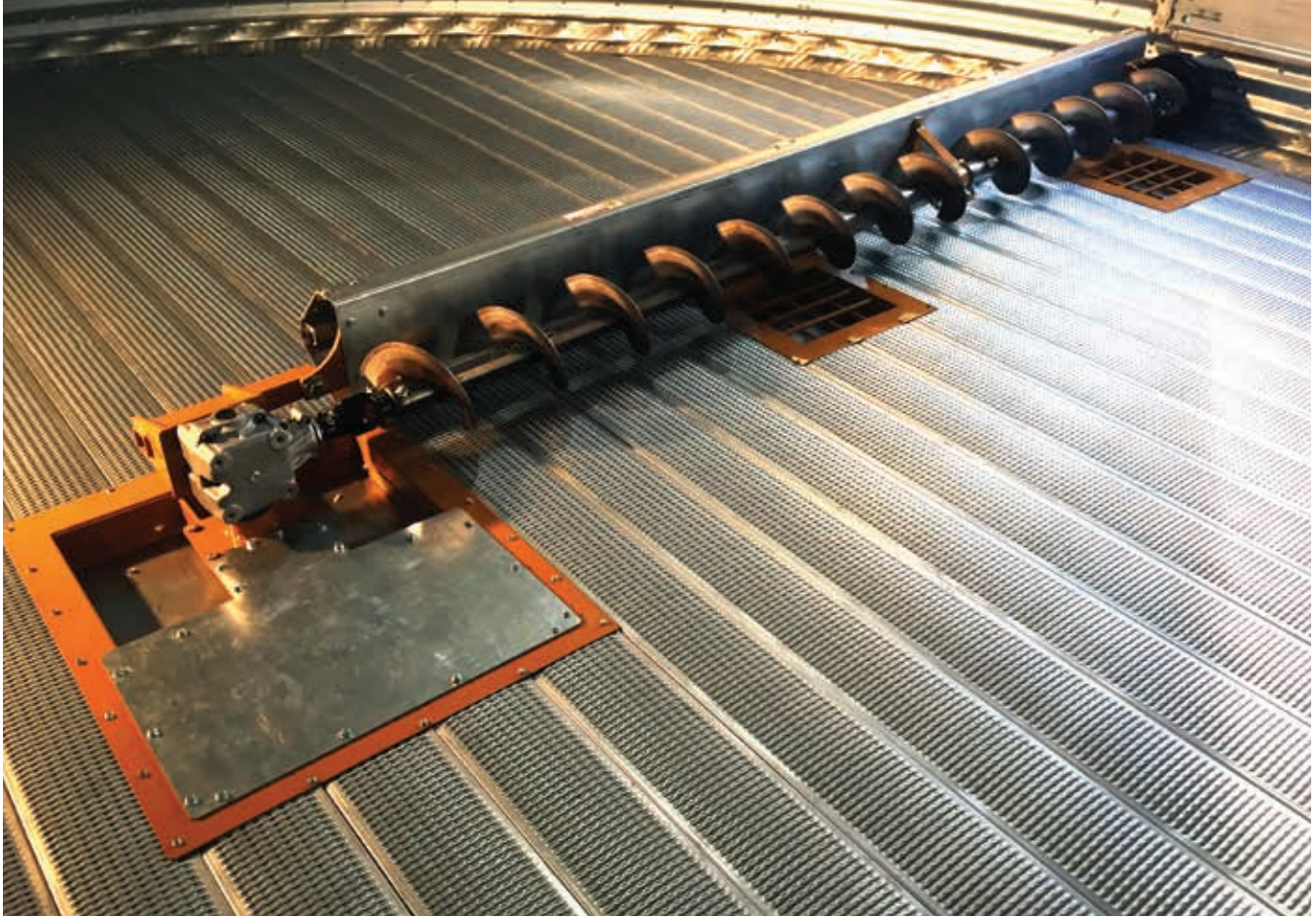
Proven internal clutch mechanism and aluminum housing ensures reliability and durability. Separate upper and lower gearboxes are joined with a coupler for easy maintenance and service.



BACKSHIELD

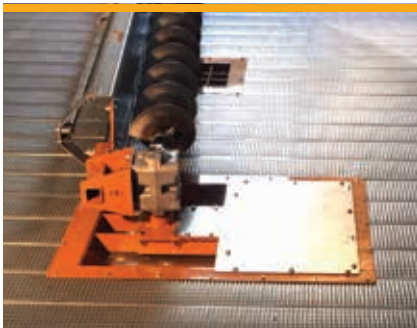
A telescoping backshield eliminates the need for shorter sweeps. Torque tube runs the entire length for superior rigidity. The rubber wiper can be adjusted closer to the floor for improved cleanout.

CHAIN LOOP POWER SWEEP



A Direct Gear Drive Sweep for use with chain loop systems. This sweep utilizes many of the same great features and components of GSI's Direct Gear Drive Power Sweep.

This sweep is available with a 9" sweep auger and 8", 10" and 12" unloads. Sized for 24'-72' diameter bins, with capacities up to approximately 4,500 BPH.



GEAR DRIVE

The Chain Loop Power Sweep is powered independently of the chain loop system via a 90 degree chain driven gear drive.



WHEEL

Proven drive wheel design provides aggressive sweep action, advancing the sweep into the grain in even the most challenging conditions.



DURA-EDGE® FLIGHTING

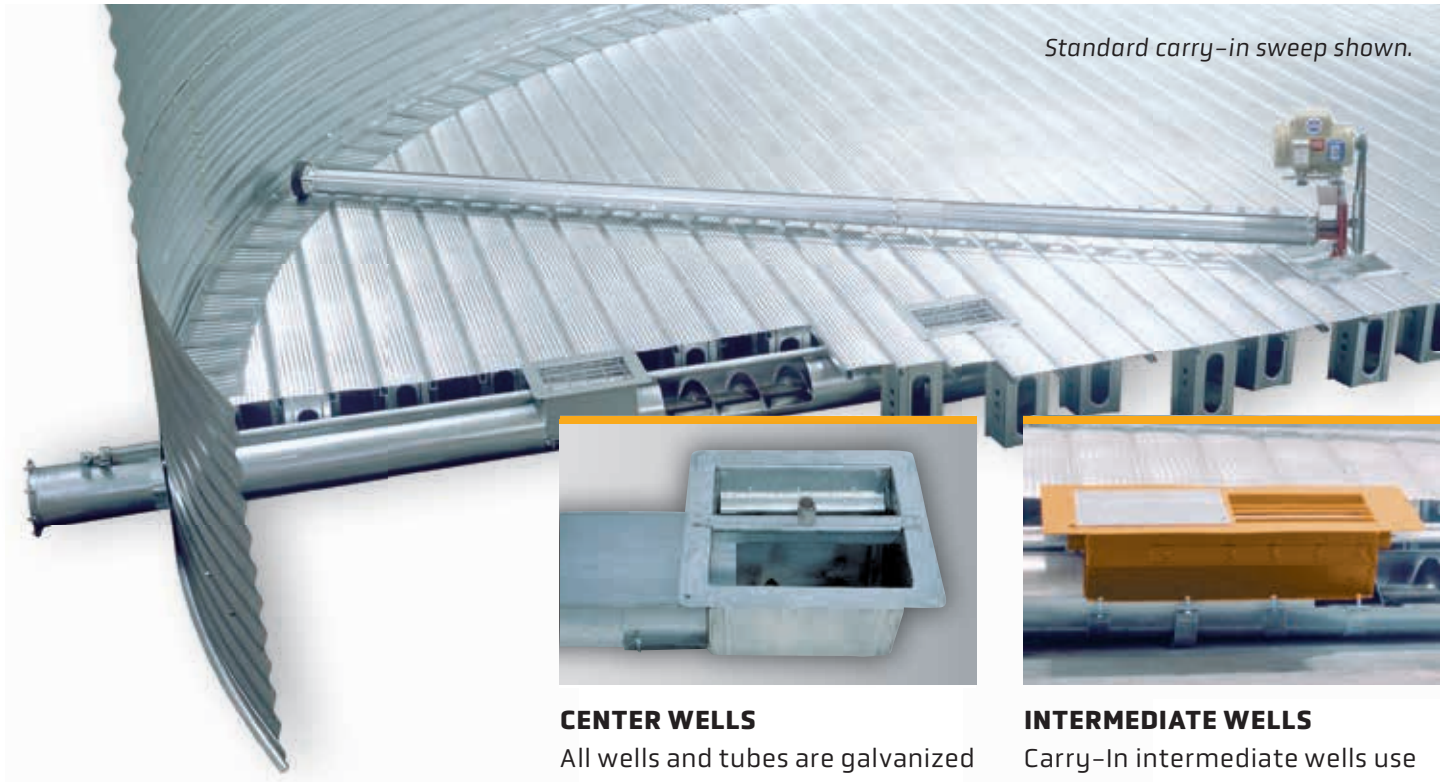
All Direct Gear Drive Sweeps are equipped with heavy-duty 7-gauge Dura-Edge® Flighting which lasts 30% longer than regular flighting. An improved wear option is also available.

CARRY-IN SWEEPS

THE POWER OF **VERSATILITY**

Our removable bin sweep gives you the versatility to easily move the entire unit from one bin to another. Standard carry-in bin sweeps are available in 6", 8" and 10" sizes, and can be used in bins ranging in diameter from 15' to 48'. Torque tube and back shield adjust for close-floor clearance for maximum clean-out. Bins 30' or larger include an intermediate bearing to help stabilize the sweep flight.

Commercial unloads are available in 8", 10" and 12" sizes for bins ranging from 24' to 72' diameter. This heavy-duty equipment is recommended in smaller bins with high use applications.



Standard carry-in sweep shown.



CENTER WELLS

All wells and tubes are galvanized or powder coat finished for extended life. *[Standard center well shown]*



INTERMEDIATE WELLS

Carry-In intermediate wells use nylon rollers. Options include a band-on well and shallow wells for use on 12" floors. *[Commercial style shown]*



RACK-AND-PINION CONTROLS

Rack-and-pinion controls are standard on 10" and larger sweeps, and optional for 8".



TRACTOR DRIVE

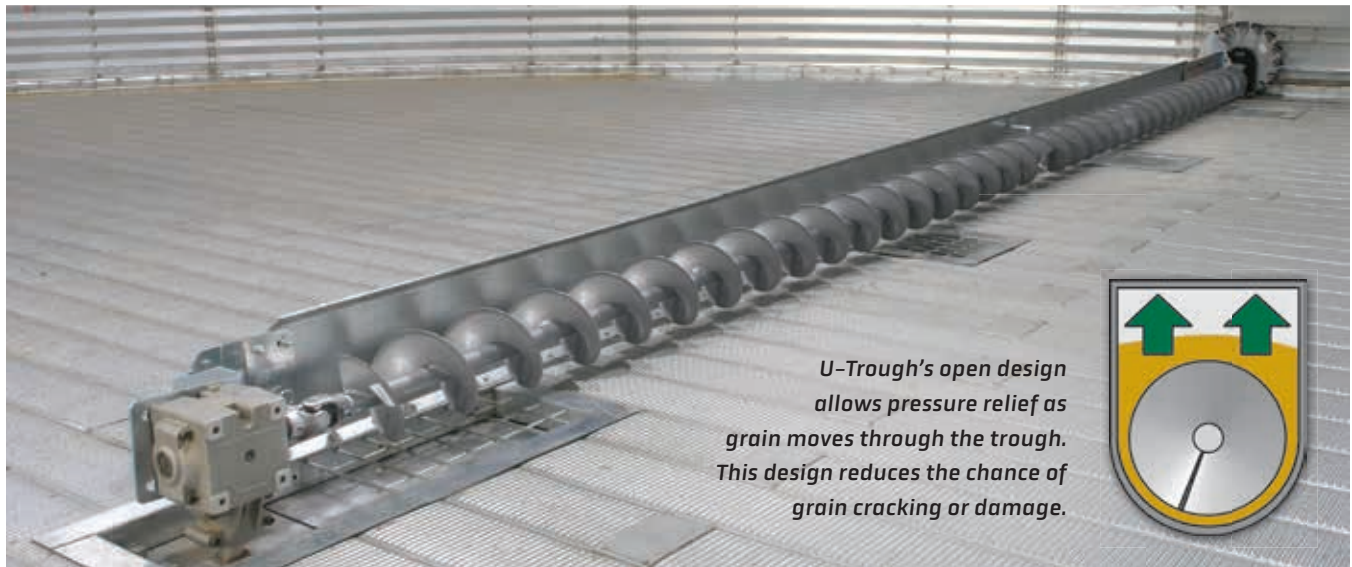
Standard on 12" commercial sweeps (optional on 10"). Retrofit to existing sweeps with minimal fabrication.



DURA-EDGE® FLIGHTING

Standard on Carry-In sweeps 8" and up. Heavy-duty 7-gauge Dura-Edge® flighting lasts 30% longer than regular flighting.

U-TROUGH

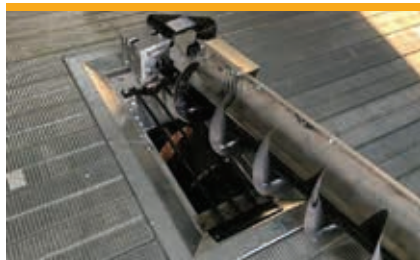


Available for bins up to 78' dia., the U-Trough fits under standard 12" floors, as well as most other aeration floors. It features an adjustable flight for expansion to the outer wall, dual-action sweep wheels move the unloader through grain while sweeping outer sidewall grain, and is designed to help sustain grain quality.



RACK-AND-PINION CONTROLS

Rack-and-pinion gate controls are standard on U-Trough unloads. Optional air or electric gate openers available. Gearbox shifter engages the sweep from outside the bin.



SWEEP DRIVE OPTIONS

Gearbox sweep drive features an enclosed shifting mechanism with no chains in the gearbox. One motor drives the unload and sweep from outside the bin.

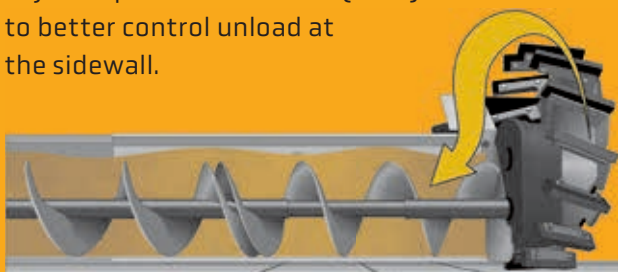


ELECTRIC POWER HEADS

Feature a quick detach motor mount and over-center belt tensioner. Rubber gasket on the belt guard maintains tube pressure for positive airflow seal. Incline elbows are available.

POWER AND PERFORMANCE

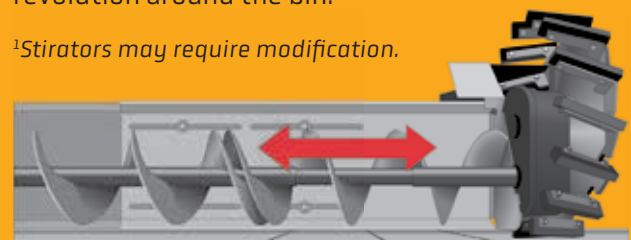
Drive wheel (patent pending) sweeps grain from the bin wall as it propels the unloader. The sweep wheel utilizes a speed reduction gear which adjusts speed of the wheel (40-1) to better control unload at the sidewall.



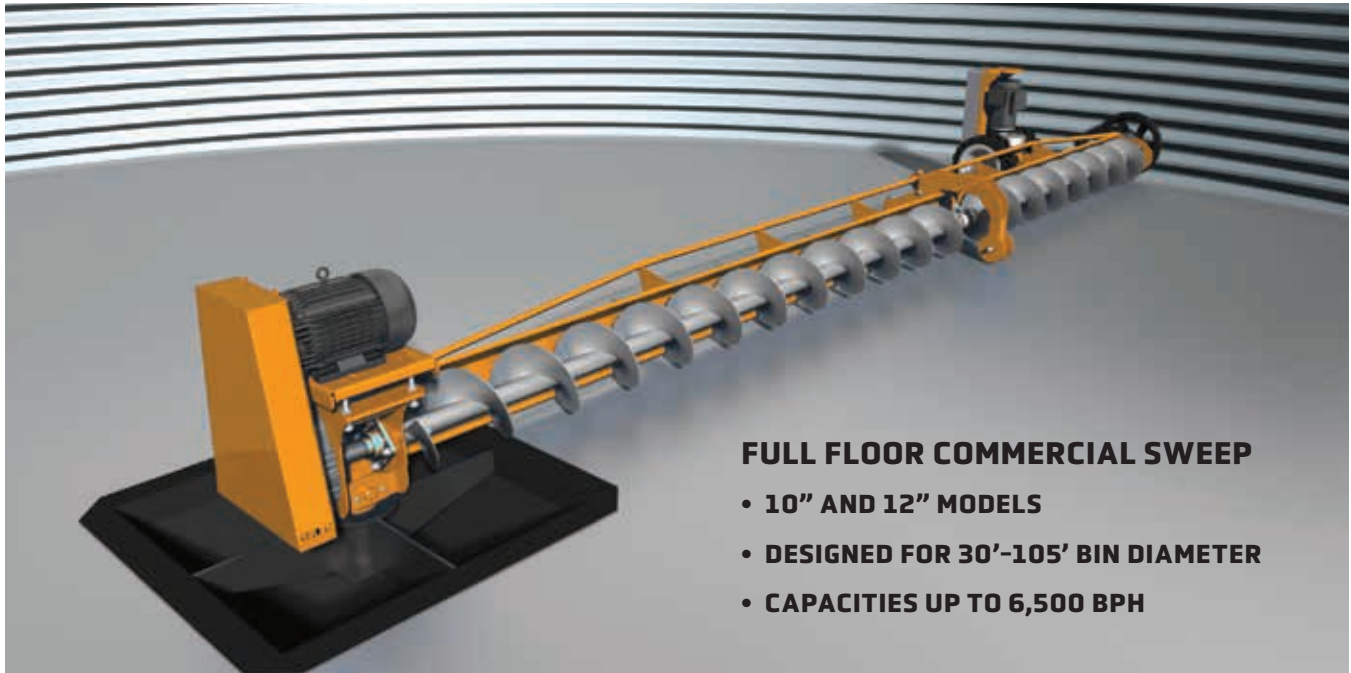
FLEXIBILITY AND CONVENIENCE

The sweep length is adjustable to accommodate various bin sizes. Standard size U-Trough sweep is 7.25". A sweep stop¹ can be controlled from outside the bin to limit the sweep to one revolution around the bin.

¹Stirators may require modification.



LEAVE-IN SWEEPS



FULL FLOOR COMMERCIAL SWEEP

- 10" AND 12" MODELS
- DESIGNED FOR 30'-105' BIN DIAMETER
- CAPACITIES UP TO 6,500 BPH

FEATURES

- Premium Thick-Edge Flighting
- Motorized Tractor Drive and SureGrip™ Wheel Ensure Reliable Power and Traction
- Skeletonized Frame
- Single-adjustment Carrier Wheels
- Retrofit Compatible
- Premium Powder-coat Finish

STANDARD CONTROL PANEL

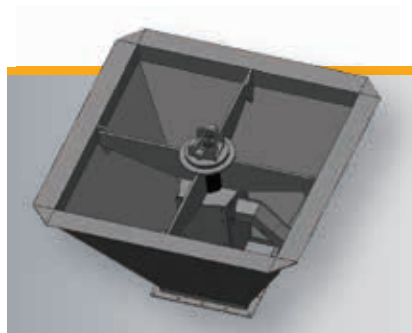
- Main Disconnect
- Auger ON/OFF Switch
- Drive FWD/OFF/REV Switch
- Emergency Stop
- Overloads for All Motors
- Can Operate Two Drives [72' and longer requires two drives]

AUTO-DRIVE CONTROL PANEL

- All Standard Panel Features
- Digital Ammeter [Auger Motor]
- Auto-Drive Forward Based on Auger Motor Amps
- Auto-Reverse

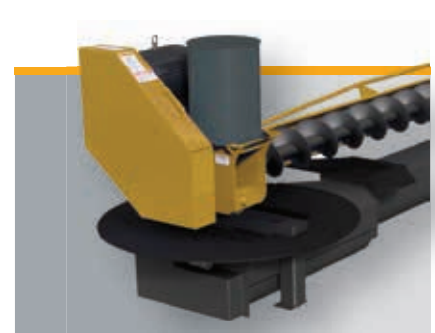
OPTIONS

- Exclusive UL Listed Collector Ring Sump
- Above Floor UL Collector Ring for Zero-Entry Sweep Operation
- Corded Sump
- Receiver/Pivot Options
- Park Plates/Track Strips



EXCLUSIVE UL LISTED COLLECTOR RING

Effectively allows power through to the sweep motor and prevents the cables from twisting as the sweep rotates.



ABOVE-FLOOR UL LISTED COLLECTOR RING

Mounted above the bin floor enabling true zero-entry sweep operation. All cables are run under the bin floor.

X-SERIES SWEEP



A TRUE ZERO-ENTRY SWEEP

No in-bin preparation is required prior to starting the X-Series Sweep, a true zero-entry sweep. Simply start and monitor operation from the externally-mounted control panel and watch your system work for you. X-Series Sweeps are available in a 12" model (3,000–7,000 BPH) and a 16" model (8,000–10,000 BPH).



POSITIVE DRIVE

Motor/gearbox combination drives a sprocket which engages track anchored to the concrete floor, eliminating slippage of the drive tractor. Gearbox is factory filled with food-grade lubricant.



DIRECT DRIVE DESIGN

Heavy-duty leave-in-place motor covers eliminate the need to uncover or prep motors prior to sweep start-up, making the X-Series a true zero-entry sweep at all stages of operation.



BOTTOM SHIELD BRUSH

Brush stays engaged with bin floor to help sweep the grain away for maximum clean out.



INTEGRATED PLOW

X-Series Sweep's integrated plow provides a cleaner sweep near the bin wall with an adjustable design to accommodate door frames. A shear bolt design prevents major damage to sweep or obstacles in event of contact.



X-SERIES CONTROL PANEL

Monitors and displays key information, allowing for manual or automatic operation. To promote safety, the panel allows for the easy integration of safety switches such as light curtains, and interlocks for downstream equipment monitoring. In the event of an avalanche the X-Series senses an amperage spike and immediately reverses the sweep while keeping the flight engaged for seamless operation with no entry. The control panel is mounted directly on the bin. The sweep can be monitored from a control room through remote access.

PADDLE SWEEPS

DIRECT GEAR DRIVE

Designed for 15'-66' dia. bins. Capacities up to 5,000 BPH.

- Sweep powered from bin unload or external motor in some cases.
- Heavy-duty paddle chain and explosion proof motor.
- Rubber drag helps clean the floor for minimal sweeping.
- Designed to be fully submersed in grain and can unbury itself from an avalanche.
- Does not plug or stall when overrunning the sweep.



FARM DUTY INTERCEPTOR

For 15'-60' dia. bins with no existing power or screw conveyor unload. Gently and evenly unloads up to 5,500 BPH.

- Drive is paddle chain driven with no added power source needed.
- Heavy-duty paddle chain and explosion proof motor.
- Rubber drag helps clean the floor for minimal sweeping.
- Designed to be fully submersed in grain and can unbury itself from an avalanche.

COMMERCIAL DUTY DPS G2

Designed for high capacity systems. Flexible rubber paddles to gently unload up to 5,500 BPH in 15'-105' dia. bins.

- Support stands allow for minimal entry once the sweep has started.
- One 3-phase explosion-proof motor operates sweep.
- Simplified drive tractors push sweep around the bin.
- Available with either a pivot pin or collector ring with a start/stop control panel.



HIGH-CAPACITY DPS 12K

For larger capacity grain systems. Flexible rubber paddles gently unload up to 12,000 BPH in 48'-139' dia. bins.

- Support stands allow for minimal entry once the sweep has started.
- One 3-phase explosion-proof motor operates sweep.
- Simplified drive tractors push sweep around the bin.
- Collector ring provides constant power to the sweep motor without having to move electrical cords with a start/stop control.

UNDER-BIN CHAIN CONVEYOR



The GSI Under-Bin Chain Conveyor is a gentler, more durable solution for unloading. Designed to be fully integrated into bins from 24' to 90' diameter with full-floor aeration.

Compatible with Most GSI Sweeps

Conveyor Size Options:
12"x12" (up to 72' bins) , 16"x12" , 21"x12"

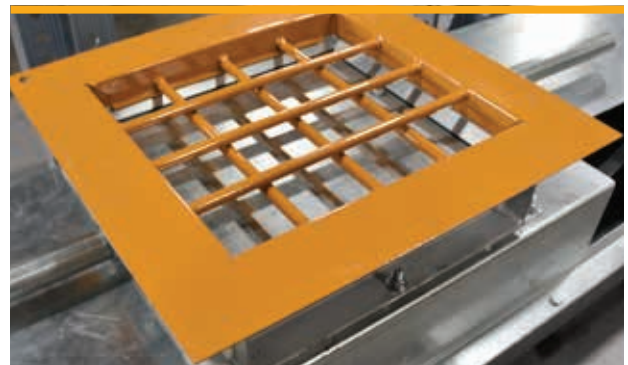
Capacities from 3,000 to 10,000 BPH

Enclosed Shaft and Bearings for Safe Operation
Fits under Aeration Floor



HEAD AND TAIL SECTIONS

Head and tail sections can be extended to fit your application. The Under-Bin Chain Conveyor can also be configured to "daisy chain" between two bins. Bend sections available from 15 to 60 degrees.



CENTER AND INTERMEDIATE WELLS

Center and intermediate wells are pre-plumbed at the factory for quicker and accurate installation.

UNLOAD OPTIONS

POWER HEADS

Choose a vertical, horizontal, or 25 degree discharge to make it easier to discharge directly into a truck, trailer or other equipment with a power head discharge at the angle that is right for your operation.

Features

- Remove flighting without removing the power head for easy maintenance
- Single-threaded adjustment rod to easily tighten belts
- Removable hinged motor plate
- Removable bearing plate
- Steel belt guard with vertical removal
- Standard unload and direct gear drive sweeps utilize the same drive
- 12" commercial horizontal without reducer



Easily remove flighting without removing the power head for hassle free maintenance.



HORIZONTAL

- Available in 6", 8", 10" and 12"
- Standard units are offered in 1, 2 or 3 belt drives
- Commercial units are offered in 2, 3 or 4 belt drives
- Improved wear option (AR flighting) available



VERTICAL

- On bins 48' dia. and smaller, our 16'6" standard vertical makes it easier to discharge directly into a truck, trailer or mill
- Double flighting on the intake auger
- 16'6" tall commercial double drive vertical can be used on 24'-120' dia. bins



25 DEGREE INCLINE

- Available in 6" (horiz.) to 8" (incline), 8" to 10", or 10" to 12"
- Inclines have a 2, 3 or 4 belt drive and include an adjustable support stand
- Optional wheel kit can be attached to make unit portable
- Improved wear option (AR flighting) available



COMMERCIAL SWEEP TRACTOR

Optional on 10" and 12" heavy-duty models, sweep tractor is a knockdown design to fit in a 18" square door. Tractor improves performance and safety, and retrofits to existing sweep with minimal fabrication. Idler wheel required in place of end wheel drive. Kits include .5 hp, 3-phase, explosion-proof motor.

Commercial Sweep Control Panel

- Automatic or manual control. Advance is controlled by auger motor amperage.
- Portable design for easy movement between same size sweeps.
- 3-phase, 230 or 460 volts. Multiple models cover auger horsepower range of 3-10 (230V) and 3-20 (460V).



DIRECT GEAR DRIVE SWEEP SPECIFICATIONS

UNLOAD AUGER DIA.	BIN DIA.	SWEEP FLIGHT DIAMETER	SWEEP FLIGHT SPEED	UNLOAD CAPACITY
8"	15'	5" or 7"	260 RPM	1,500 – 2,500 BPH ¹
	18'			
	21'			
	24'			
	27'			
	30'			
	33'			
	36'			
	42'			
	48'			
10"	24'	7" or 9"	285/230 RPM ²	2,000 – 5,000 BPH ¹
	27'			
	30'			
	33'			
	36'			
	42'			
	48'			
	54'			
	60'			
	72'			

1 – Capacities are approximate and may vary depending on unload powerhead. All capacities are based on dry free flowing grain.

2 – Dependent on sweep flight diameter.

CHAIN LOOP POWER SWEEP SPECIFICATIONS

UNLOAD AUGER DIA.	BIN DIA.	SWEEP FLIGHT DIAMETER	SWEEP FLIGHT SPEED	UNLOAD CAPACITY
8"	24'	9"	260 RPM	up to 4,500 BPH ¹
	27'			
	30'			
	33'			
	36'			
	42'			
	48'			
	54'			
	60'			
	72'			
10"	24'	9"	285 RPM	up to 4,500 BPH ¹
	27'			
	30'			
	33'			
	36'			
	42'			
	48'			
	54'			
	60'			
	72'			
12"	24'	9"	285 RPM	up to 4,500 BPH ¹
	27'			
	30'			
	33'			
	36'			
	42'			
	48'			
	54'			
	60'			
	72'			

1 – Capacities are approximate and may vary depending on unload powerhead. All capacities are based on dry free flowing grain.

2 – Dependent on sweep flight diameter.

CARRY-IN SWEEP SPECIFICATIONS

STANDARD CARRY-IN SWEEP

UNLOAD AUGER DIA.	BIN DIA.	SWEEP FLIGHT DIAMETER	SWEEP FLIGHT SPEED	UNLOAD CAPACITY
6" - 8"	15'	5"	369, 438, 525 RPM ²	up to 2,250 BPH ¹
	18'			
	21'			
	24'			
	27'			
	30'			
	33'			
	36'			
	42'			
10"	24'	7"	438 RPM ²	2,250 BPH ¹
	27'			
	30'			
	33'			
	36'			
	42'			
	48'			

COMMERCIAL CARRY-IN SWEEP

UNLOAD AUGER DIA.	BIN DIA.	SWEEP FLIGHT DIAMETER	SWEEP FLIGHT SPEED	UNLOAD CAPACITY
6" - 8"	24'	5"	328/438 RPM ²	800-1,050 BPH ¹
	27'			
	30'			
	33'			
	36'			
	42'			
	48'			
8" - 10"	24'	7"	306/394 RPM ²	1,500 - 2,050 BPH ¹
	27'			
	30'			
	33'			
	36'			
	42'			
10" - 12"	48'	9"	250/290 RPM ²	3,200 - 3,700 BPH ¹
	54'			
	60'			
	66'			
	72'			

POWER HEADS - UNLOAD CAPACITIES (BPH)

	6"	8"	10"	12"
Vertical	1250	2500	3750	5000
Horizontal	1500	2500	4000	6000
	6"-8"	8"-10"	10"-12"	NA
25° Incline	1500	2000	4000	NA

¹ - Capacities are approximate and are dependent upon the motor sheave selection. All capacities are based on dry free flowing grain.

² - Flight Speed dependent upon motor sheave selection.

U-TROUGH SPECIFICATIONS

		HP FOR DRIVE UNIT STYLE	
SWEEP FLIGHT DIA.	BIN DIA.	HORIZONTAL	INCLINE
7.25"	15'	5	7.5
	18'	5	7.5
	21'	5	7.5
	24'	7.5	7.5
	27'	7.5	10
	30'	7.5	10
	33'	7.5	10
	36'	10	10
	42'	10	10
	48'	15	15
	54'	15	20
	60'	20	20
	78'	25	25
8.25"	30'	7.5	10
	33'	7.5	10
	36'	10	10
	42'	10	10
	48'	15	15
	54'	15	20
	60'	20	20
	78'	25	25

All U-Trough unload systems 9" unload flight in a 11" trough. Capacities may vary depending on grain type and condition.

LEAVE-IN SWEEP SPECIFICATIONS

10" AUGER

BIN DIA.	TRACTOR HP	CAPACITY	AUGER DRIVE HP
30'	1	1500-2000	3
		3000-3500	5
33'	1	1500-2000	3
		3000-3500	5
36'	1	1500-2000	3
		3000-3500	5
42'	1	1500	3
		2000-3500	5
48'	1	1500	3
		2000	5
		3000-3500	7.5
54'	1	1500-2000	5
		3500	7.5
60'	1	1500-2000	5
		3000-3500	7.5
66'	1	1500	5
		2000	7.5
		3000-3500	10
72'	1	1500	5
		2000	7.5
		3000-3500	10
75'	1	1500	5
		2000	7.5
		3000-3500	10
78'	1	1500	5
		2000	7.5
		3000-3500	10
90'	1	1500	7.5
		2000	10
		3000-3500	15
105'	1	1500	7.5
		2000	10
		3000-3500	15

12" AUGER

BIN DIA.	TRACTOR HP	CAPACITY	AUGER DRIVE HP
30'	1	4000	5
		5000-6500	7.5
33'	1	4000	5
		5000-6500	7.5
36'	1	4000	5
		5000	7.5
		6000-6500	10
42'	1	4000-5500	7.5
		6000-6500	10
48'	1	4000	7.5
		5000	10
		6000-6500	15
54'	1	4000	7.5
		5000	10
		6000-6500	15
60'	1	4000	10
		5000-6500	15
66'	1	4000	10
		5000	15
		6000-6500	20
72'	1	4000	10
		5000	15
		6000-6500	20
75'	1	4000-5500	15
		6000-6500	20
78'	1	4000-5500	15
		6000-6500	20
90'	1	4000	15
		5000	20
		6000-6500	25
105'	1	4000-5500	20
		6000-6500	25

X-SERIES SWEEP SPECIFICATIONS

AUGER SIZE	BIN DIA.	TRACK DRIVE HORSEPOWER	AUGER DRIVE HP 3,000 - 10,000 BPH
12"	27'	1/2	15
	30'	1/2	15
	33'	1/2	15
	36'	1/2	15
	42'	1/2	15
	48'	1/2	15
	54'	1/2	15
	60'	1/2	15
	72'	1/2	15
	75'	1/2	15
	78	1/2	15
	90'	1/2	20
	105'	1/2	25
	135'	1/2	25
16"	27'	1/2	15
	30'	1/2	15
	33'	1/2	15
	36'	1/2	15
	42'	1/2	15
	48'	1/2	15
	54'	1/2	15
	60'	1/2	20
	72'	1/2	20
	75'	1/2	20
	78	1/2	20
	90'	1/2	25
	105'	1/2	30
	135'	1/2	30

Capacities and stated motor horsepowers based on dry, free-flowing grain. X-Series Sweep is not intended for tanks with full floors.

PADDLE SWEEP SPECIFICATIONS

DIRECT GEAR DRIVE

BIN DIA.	BPH					
15'-66'	1,000 BPH	1,500 BPH	2,000 BPH	2,750 BPH	4,000 BPH	5,000 BPH

FARM DUTY INTERCEPTOR

BIN DIA.	BPH					
15'-60'	1,000 BPH	1,500 BPH	2,000 BPH	2,750 BPH	4,000 BPH	5,500 BPH

COMMERCIAL DUTY DPS G2

BIN DIA.	BPH					
15'-60'	1,000 BPH	1,500 BPH	2,000 BPH	2,750 BPH	4,000 BPH	5,500 BPH
66'-105'	X	X	X	2,750 BPH	4,000 BPH	5,500 BPH

HIGH-CAPACITY DPS 12K

BIN DIA.	BPH				
48'-139'	7,500 BPH	8,500 BPH	10,000 BPH	12,000 BPH	

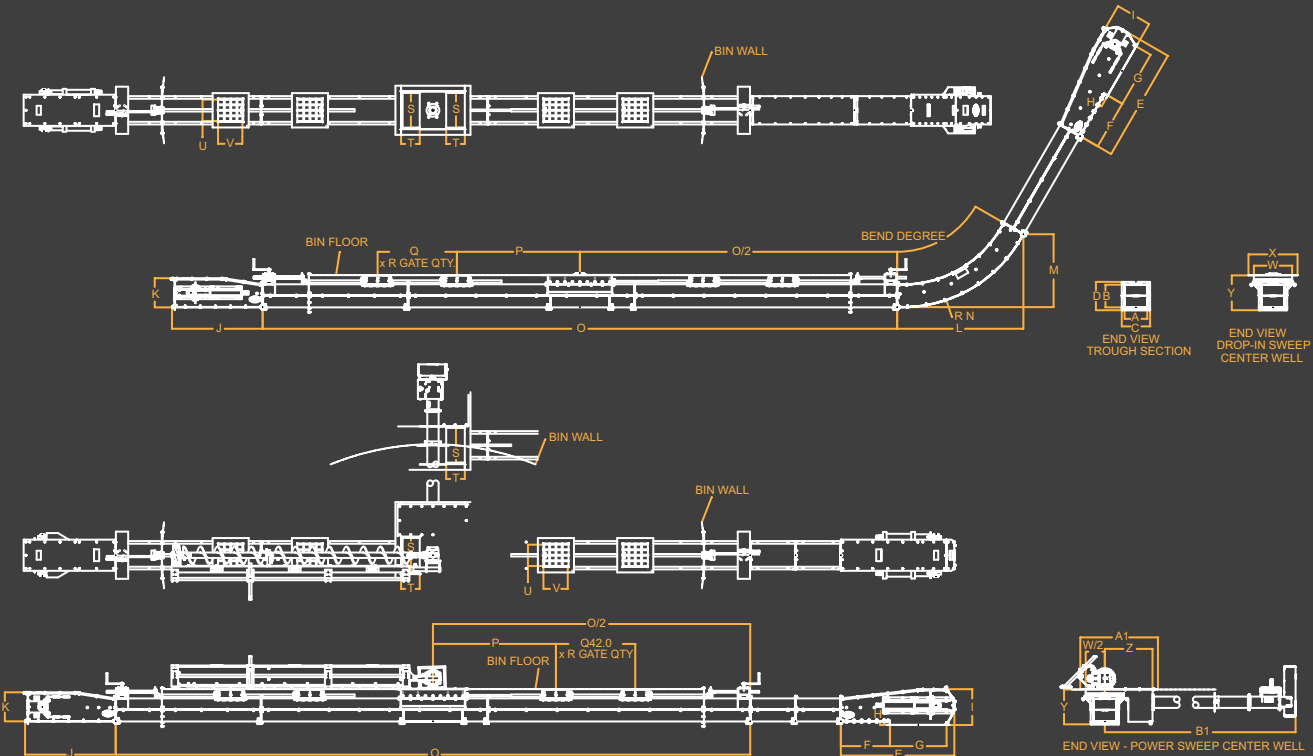
Capacities based on dry, free flowing, grain.

UNDER-BIN CHAIN CONVEYOR SPECIFICATIONS

DIMENSIONS	TROUGH				HEAD					TAIL	
SIZE (WxH)	A	B	C	D	E	F	G	H	I	J	K
12" x 12"	12	12	15	15	60	26	30	2	19	48	15.5
16" x 12"	16	12	19	15	60	26	30	2	19	48	15.5
21" x 12"	21	12	24	15	60	26	30	2	19	48	15.5

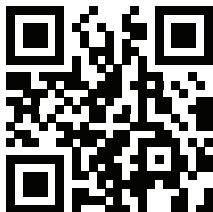
BEND DEGREE	L	M	N
15°	24.5	3.2	72.0
22.5°	33.3	6.6	72.0
30°	41.6	11.1	72.0
37.5°	49.2	16.7	72.0
45°	56.0	23.2	72.0
60°	66.9	38.6	72.0

	DIMENSIONS INSIDE BIN								SWEEP COMMON			POWER SWEEP ONLY		
BIN DIA.	O	P	Q	R	S	T	U	V	W	X	Y	Z	A1	B1
24'	336	65.1	42	4	18.4	9.9	11.3	11.4	20.3	26	18.4	25.3	41.1	185.8
27'	372	65.1	60	4	18.4	9.9	11.3	11.4	20.3	26	18.4	25.3	41.1	203.8
30'	408	65.1	60	4	18.4	9.9	11.3	11.4	20.3	26	18.4	25.3	41.1	221.8
33'	444	65.1	42	6	18.4	9.9	11.3	11.4	20.3	26	18.4	25.3	41.1	239.8
36'	480	65.1	60	6	18.4	9.9	11.3	11.4	20.3	26	18.4	25.3	41.1	257.8
42'	552	65.1	54	8	18.4	9.9	11.3	11.4	20.3	26	18.4	25.3	41.1	293.8
48'	624	65.1	62	8	18.4	9.9	11.3	11.4	20.3	26	18.4	25.3	41.1	329.8
54'	696	65.1	66	8	18.4	9.9	11.3	11.4	20.3	26	18.4	25.3	41.1	365.8
60'	768	65.1	66	10	18.4	9.9	11.3	11.4	20.3	26	18.4	25.3	41.1	401.8
66'	840	65.1	60	12	18.4	9.9	11.3	11.4	20.3	26	18.4	25.3	41.1	437.8
72'	912	65.1	60	12	18.4	9.9	11.3	11.4	20.3	26	18.4	25.3	41.1	474.3
75'	948	65.1	Varies	12	18.4	9.9	11.3	11.4	20.3	26	18.4	NA	NA	NA
78'	984	65.1	Varies	12	18.4	9.9	11.3	11.4	20.3	26	18.4	NA	NA	NA
90'	1128	65.1	Varies	12	18.4	9.9	11.3	11.4	20.3	26	18.4	NA	NA	NA





Visit grainsystems.com
for product specs and info



Contact your GSI Dealer for more information.

© 2025 Grain and Protein Technologies. All rights reserved. GSI reserves the right to
change designs and specifications without notice.

GS-018 / FEBRUARY 2025

