

QUICKBOLT™ TOWERS & CATWALKS



PROVEN & DEPENDABLE™

WWW.GRAINSYSTEMS.COM

QUICKBOLT™ TOWERS

PRODUCT OVERVIEW



FROM NEED-IT-YESTERDAY TO CUSTOM-FIT, GSI HAS THE RIGHT QUICKBOLT TOWER AND ACCESSORIES FOR YOUR PROJECT.

READY-TO-ORDER TOWERS

GSI's quickest QuickBolt is engineered with the same high-quality as all GSI Quickbolt towers and are designed to support the most common bucket elevator configurations.

- Pre-welded base plates – no field welding required
- One service platform can be placed in 20' intervals from the bottom or at the top
- Bucket elevators can be placed inside or outside of the tower footprint

FOOTPRINT	8'	10'	12'
Min. Height	45'	45'	45'
Max. Height	100'	140'	160'
Single Elevator Pulley Size	16"-48"	16"-48"	16"-48"
Twin Elevator Pulley Size	16"-30"	16"-42"	16"-48"

CONFIGURE-TO-ORDER TOWERS

Need additional customization? Combine sections and platforms in 1' increments to easily fit within a standard footprint.

- Support an elevator, catwalk or stairs with a combination of angle and tube bracing
- Platforms can be placed at any column splice or in 1' increments

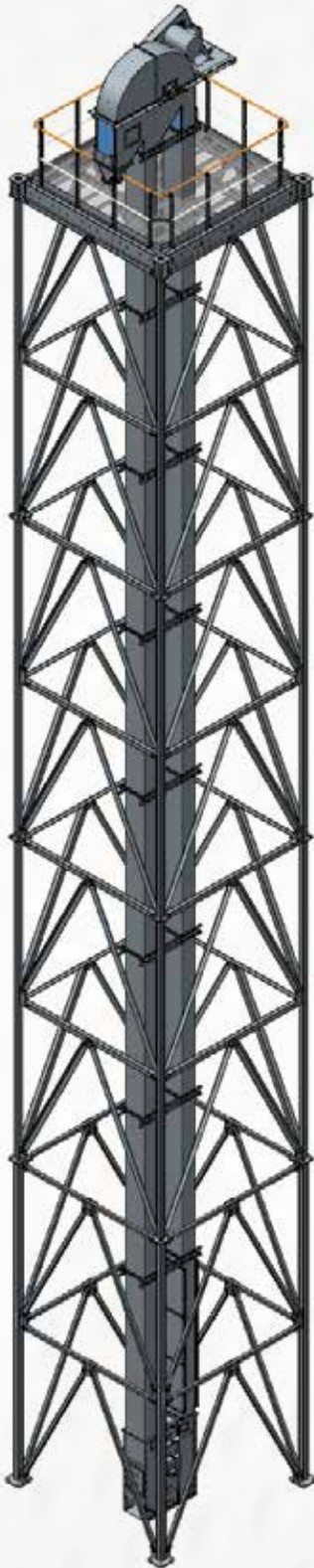
ENGINEER-TO-ORDER TOWERS

GSI's most customized tower is engineered to meet your exact specification.

- Elevations can be modified to fit any requirement
- Platforms can be placed at any elevation
- Personalize your tower with a full line of accessories and custom bracing for improved access

QUICKBOLT™ TOWERS

FEATURES



READY-TO-ORDER TOWER

QuickBolt™ Towers feature less bolts, fewer pieces and a time saving platform design for more efficient on-site assembly.

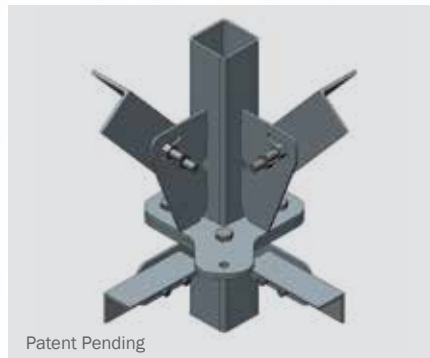
Bucket Elevator Support Tower

Footprints: 8'-24' x 8'-24' in 2' increments

Catwalk Support Tower

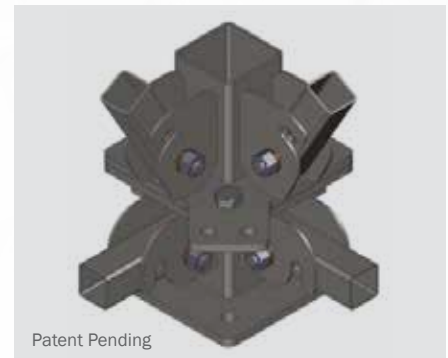
4-legged Tower Footprints: 4'-6' x 6'-14' and 8'-24' x 8'-24' in 2' increments

2-legged Tower Footprints: 6'-14' in 2' increments



ANGLE TOWER BRACING

Angle-braced columns allow more efficient tower design.



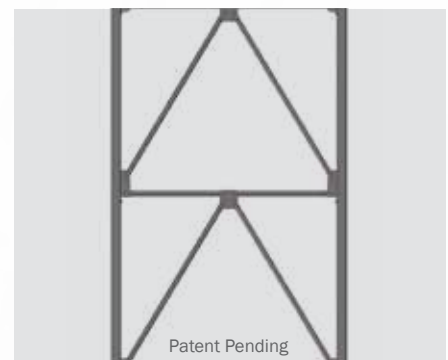
COLUMN TO STRUT AND DIAGONAL CONNECTION

New design requires fewer bolts, resulting in less time spent assembling, while still leading the industry in strength-to-weight ratios.



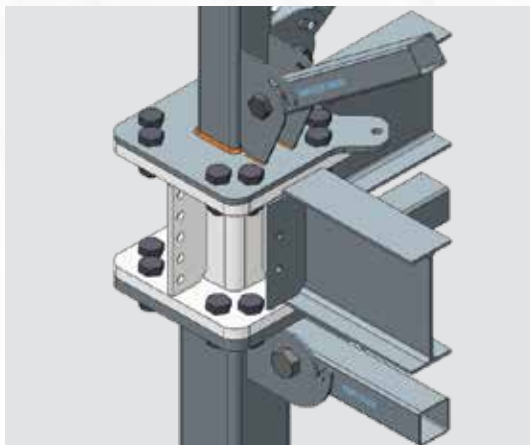
TOWER STRUT TO DIAGONAL CONNECTION

Simple connections and alignment guides aid in the ease of field assembly.



TUBE CONSTRUCTION

When combined with the Chevron-Bracing design, tube construction provides industry leading strength-to-weight ratios and allows utilization of single bolt connections. Significantly reducing the number of bolts required.



PLATFORMS

Standard Duty Platforms - Used for personnel loading only in configure-to-order applications on towers with a 14' or smaller footprint. Feature roll-formed channel frame, Grip Strut® grating, bolt-up handrail system and clamp-on knee bracing. Configurable platform frame to provide flexibility in the field.

Equipment Platforms - Used in engineered-to-order applications, for equipment and/or catwalk loading. Feature beam frame and various options for grating and handrails. Designed to fit your specific situation with no field work required. Available for all tower sizes.



STAIRS

Standard Duty Stairs - Available in wrap around or switch back options or a combination of the two. Feature clamp-on support arms (permanent field attachment required), roll-formed channel frame, non-slip treads, Grip Strut® platform grating, and a bolt-up handrail system. Available for 8' and 12' towers.

Welded Stairs - Feature bolt-on support arms, with no field welding required. Available for all tower footprints larger than 8'.



CATWALK SUPPORT

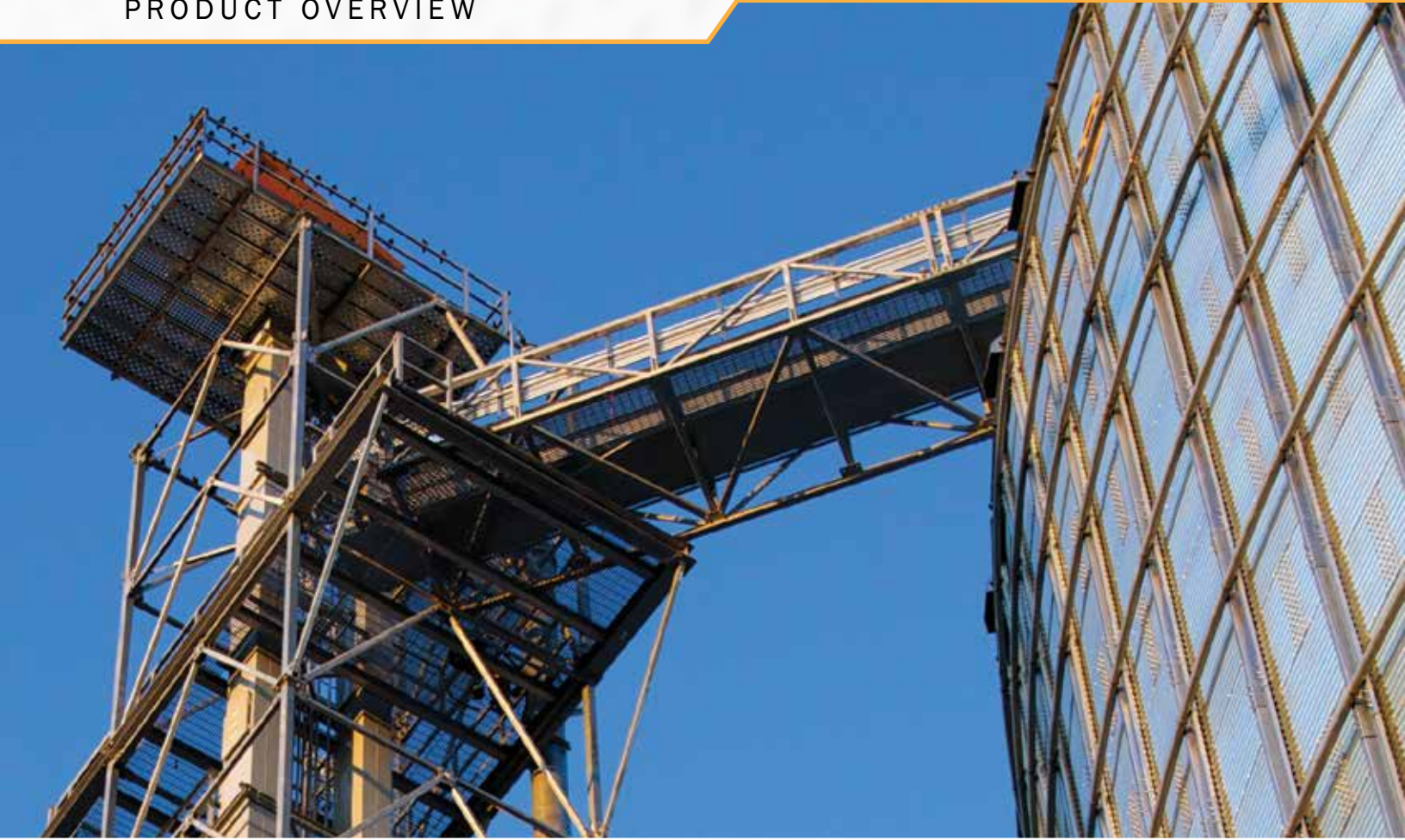
Cantilever support beams limit interference between the catwalk and tower bracing. This reduces the complexity of connecting the bridge to the tower and eliminates the need for custom bracing.

LADDERS

Features include rest platforms, roll-formed frame, Grip Strut® grating, bolt-up handrails. Options include welded or roll-formed ladder sections. Safety options include a fall protection system and/or safety cage.

GUY KITS

Guy kits for bucket elevator and two leg towers clamp to tower columns and feature slip tubes and turnbuckles for adjustability.

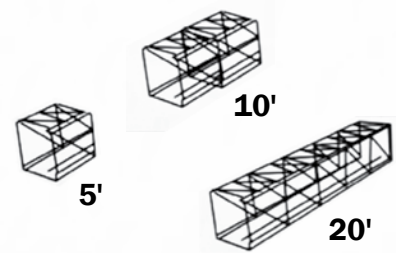


WITH GREATER SPAN-TO-WEIGHT RATIOS, INNOVATIVE DESIGN AND MULTIPLE SPAN OPTIONS, GSI QUICKBOLT CATWALKS ARE IDEALLY SUITED FOR YOUR OPERATION.

CONFIGURE-TO-ORDER CATWALKS

Combine sections in 5' increments in any order to easily meet the requirements of sites with a standard footprint.

- Open top catwalks provide a range of support options for material handling and personnel access
- Standard widths of 4' to 9' are available, with maximum spans up to 125'
- Optional service walk-arounds provide additional clearances for easy access to maintenance items



ENGINEER-TO-ORDER CATWALKS

Engineer-to-order catwalk lengths can be modified to meet exact specifications to fit any requirement.

- Standard 2' walkway and customizable walk-arounds provide a range of options for material handling and personnel access
- Custom widths are available upon request, with maximum unsupported spans up to 190'
- Conveyor support systems can be designed to provide landing spots for your specific material handling equipment

QUICKBOLT™ CATWALKS

FEATURES

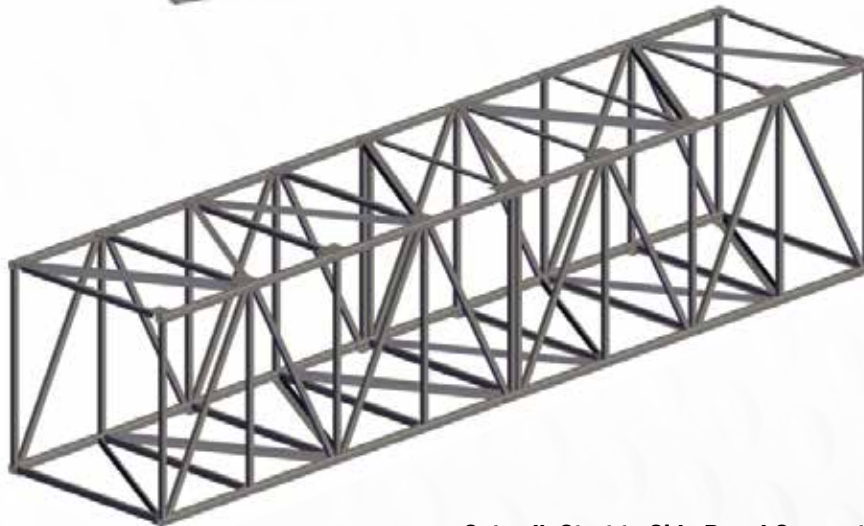
QuickBolt™ Catwalks lead the industry with an innovative design, simplifying field assembly. Handrail or Walk-Thru trusses are available, and custom designed catwalks can be built with spans well over 190' – no matter what fits your operation, QuickBolt Catwalks will save you time in the field.

PER 20' SECTION	PIECES	BOLTS
20' Handrail Truss	18	56/58
20' Walk-Thru Truss	26	56

- Reduction of loose pieces
- Deflection limiting connections
- Simplified connection design
- Simple span trusses
- Greater span-to-weight ratios

HANDRAIL TRUSS

- Ideal for spans up to 125 feet.
- Open top for easier conveyor placement in the field.

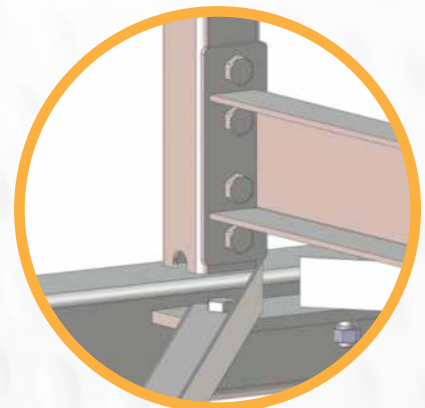


WALK-THROUGH TRUSS

- Ideal for longer spans up to 190 feet.
- Meets maximum loading requirements.

Catwalk Strut to Side Panel Connection

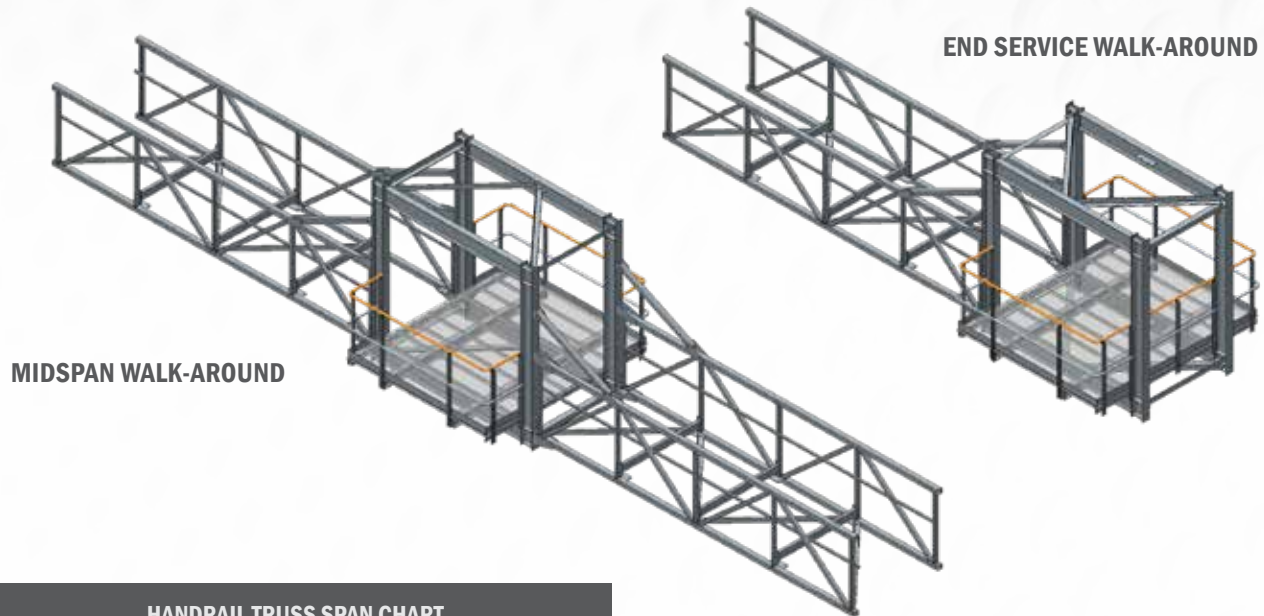
Fewer pieces allow crews to assemble catwalks faster and minimize the complexity of sorting and keeping track of pieces at the job site.



ACCESSORIES

WALK-AROUND OPTIONS

- Get the space you need for motors, drives, transitions and trippers.
- Easier access for routine maintenance.



HANDRAIL TRUSS SPAN CHART (CONVEYOR LOADING, LB/FT)				
SPAN (FT.)	HT60	HT80	HT120	HT170
35	425			
40	355			
45	270			
50	220			
55	180	425		
60	115	365		
65		268		
70		247		
75		185		
80		131	460	
85			369	
90			294	
95			211	
100			160	
105			96	349
110				282
115				210
120				162
125				105

WALK-THRU SPAN CHART (CONVEYOR LOADING, LB/FT)			
SPAN (FT.)	WT180	WT200	WT250
100	465		
105	435		
110	410		
115	385		
120	370	480	
125	340	450	
130	315	430	
140	260	365	
150	150	280	510
160		100	450
170			380
180			260
190			210

COMPLETE YOUR GSI SYSTEM

WWW.GRAINSYSTEMS.COM



40-SERIES™ GRAIN BIN

When determining the best system for your operation, we know that what's protected inside the bin is what counts the most. Each bin is efficiently designed to handle maximum loads for unmatched strength and all GSI bins are constructed using the highest Strength steel available.



DRYING AND CONDITIONING

Today's farm and commercial operations have greatly varied needs for their drying solutions. Size, type and investment all play a part in the decision for which to use. GSI provides systems of every size and type to help with those needs. Options include TopDry, Portable, Modular, T-Series and Zimmerman Tower Dryers.



MATERIAL HANDLING

With lines of GSI and InterSystems Material Handling, we offer the broadest product portfolio of proven and dependable equipment in the industry. We design and manufacture products that withstand the conditions of any commercial grain facility, while handling the grain with care and efficiency.



GLOBAL SOLUTIONS. LOCAL SUPPORT.

GSI and GSI Dealers alike share the same passion and commitment to our customers. GSI Dealers and contractors understand down time is not an option, construction schedules must be met. From site planning to installation and service, GSI Dealers and contractors are the proven partners for your operation. When you buy GSI, you get the quality product of a worldwide leader and the dependable service of your local Dealership.

**TO FIND YOUR LOCAL GSI DEALER,
VISIT THE GSI DEALER LOCATOR
AT WWW.GRAINSYSTEMS.COM**



 **AGCO**
Your Agriculture Company

Copyright ©2020 All rights reserved.
GSI reserves the right to change
designs and specifications without notice.

GS-201 JANUARY 2020