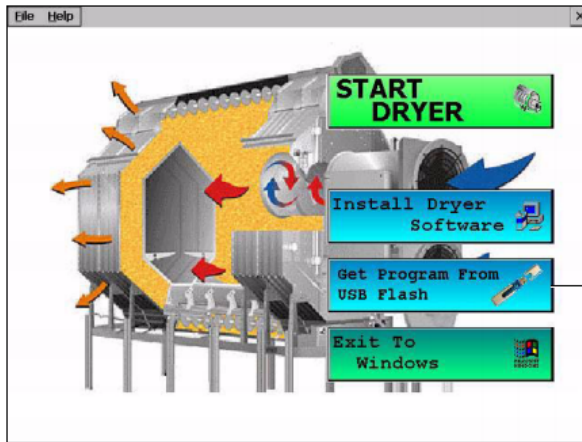


Installation Instructions – Vision V2.00

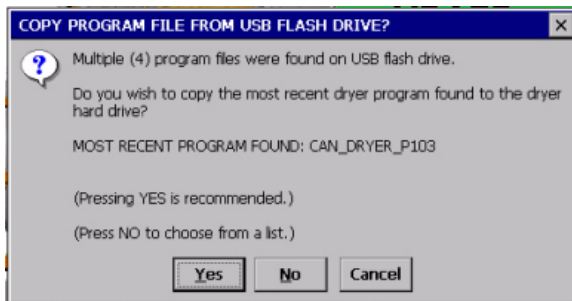
1. Power on dryer – wait for first dryer screen to load



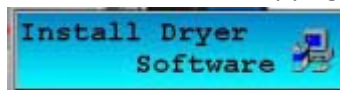
2. Insert flash drive, with CAN_DRYER_P200 located in root directory, into dryer's USB port and



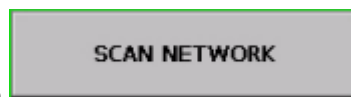
3. Search for flash drive and wait until it is found.
4. Press YES on the following screen. (Should show CAN_DRYER_P200 as most recent program.)



5. A window should appear (as normal) showing the copying progress of Version 2.00 to the dryer's hard drive. Wait until it completes. **NOTE: Do NOT remove the USB flash stick as instructed by this screen! It is not necessary.** If you remove the flash drive at this step, you will be prompted to reinsert it later. Press OK once file copying is done.

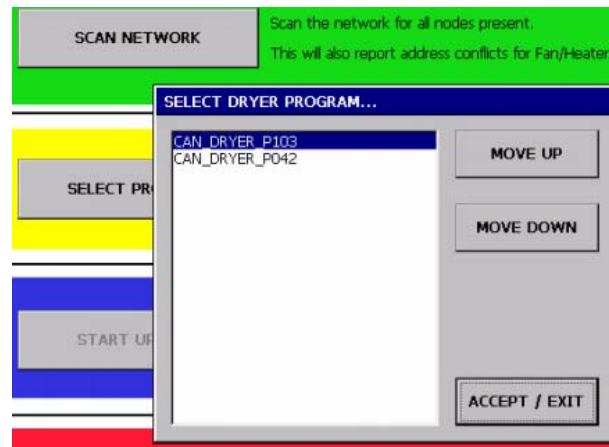


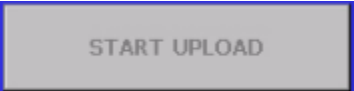
6. Press the normal install button (CAN_DRYER_P200).

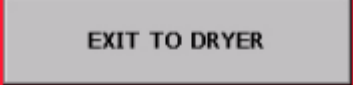


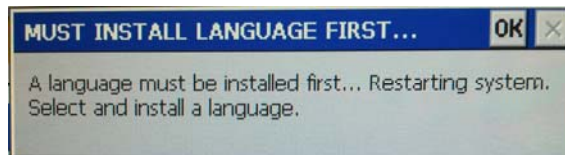
7. Press SCAN NETWORK button and make sure all boards show up.

8. Press SELECT PROGRAM button, and then select CAN_DRYER_P200 to install. See following figure.



9. Press the START UPLOAD button  and wait until all the boards are updated. *In the future you do not have to press START UPLOAD on the upload status screen anymore. That redundant button has now been removed.*

10. Now press . A small dialog (pop-up) should appear, which indicates that a language has not been installed, and the system will be restarted.



11. Press OK.

12. The first dryer screen should now appear once again (AGCO / GSI screen). Press the language




13. A pop-up will appear telling you to insert flash drive with V2.00 on it, even if the drive is already inserted into the dryer. Press YES.
14. The following screen will once again appear. The "MOST RECENT PROGRAM FOUND" should once again be CAN_DRYER_P200. Press YES. (A pop-up may ask to delete old programs... simply press NO). *Note: This is a formality of the first language install. We will not be reinstalling the software.*



15. Wait until the CAN_DRYER_P200 files are once again copied. **NOTE: DO NOT REMOVE FLASH DRIVE EVEN THOUGH IT SAYS TO DO SO!!!** Leave flash drive inserted and press OK.



16. Now press the language button  once again, and a “Select Language” screen will appear. The English button will be selected by default. Press OK.
17. Another window will now appear that is labeled “Installing Selected Language...”. Press the “Install Language” button and wait until the installation completes (progress will be shown). Press OK after files are done copying and the initial (AGCO / GSI) screen will appear once again.
18. Language installation is complete. Press “Start Dryer”. The dryer user interface should now display text in the English language.

If having a secondary language is desired, then repeat steps 12 through 17 using the secondary language. If you desire to have a default language other than English for the default language then be certain to select this language as your first language.